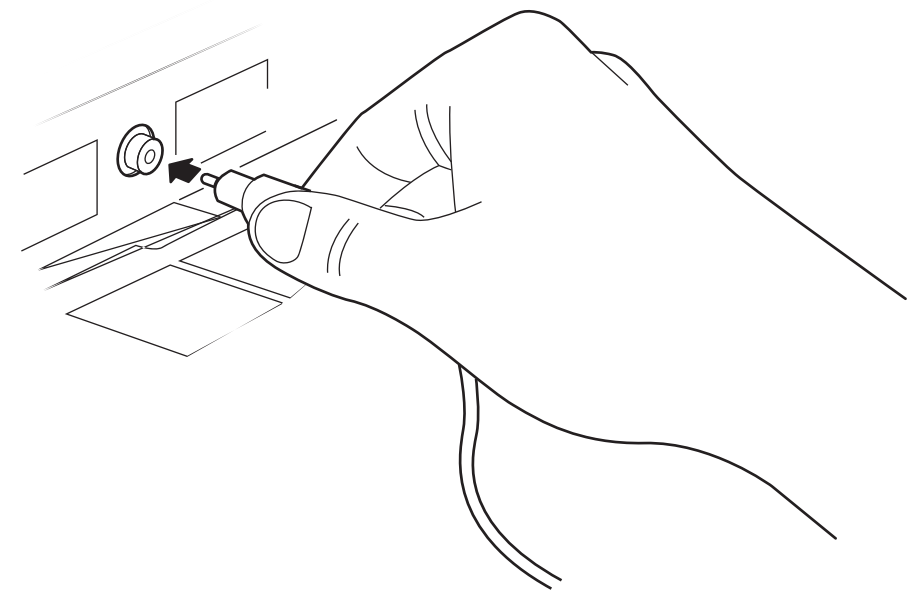


Connect



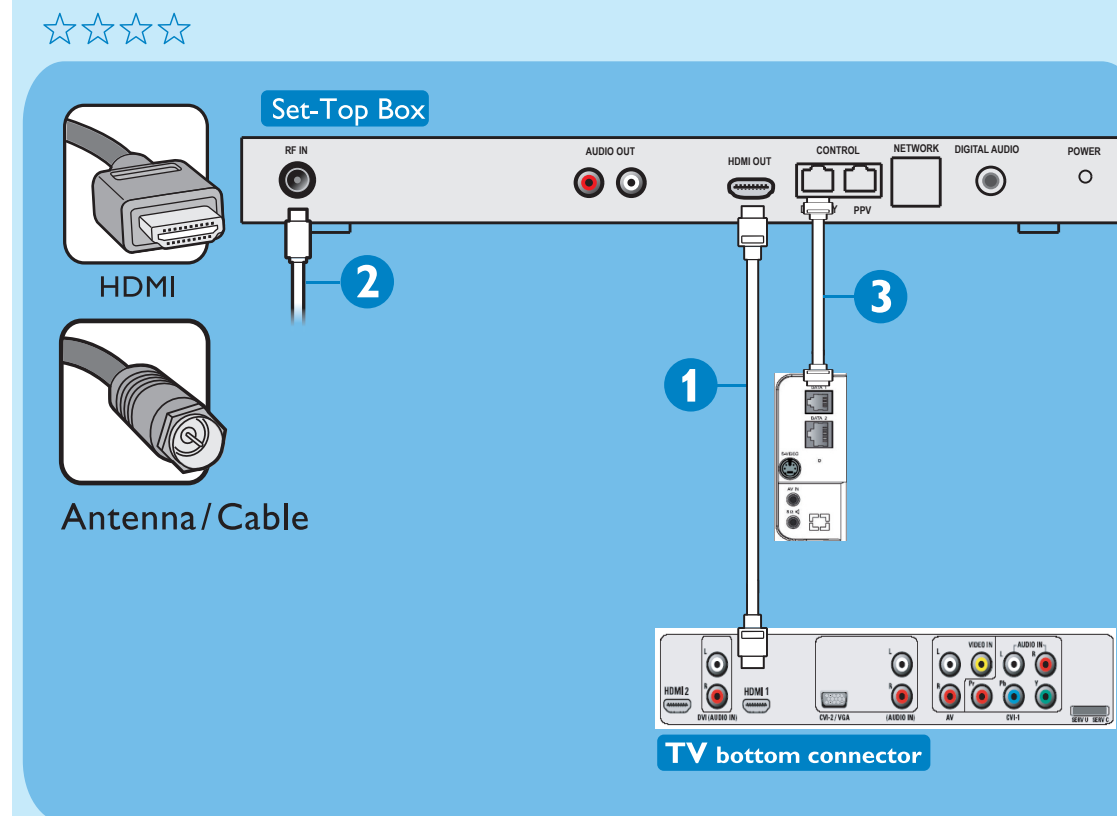
PHILIPS

English

1. Connect Antenna and Display Cables

Note: Some TV sets may already have the cables connected.

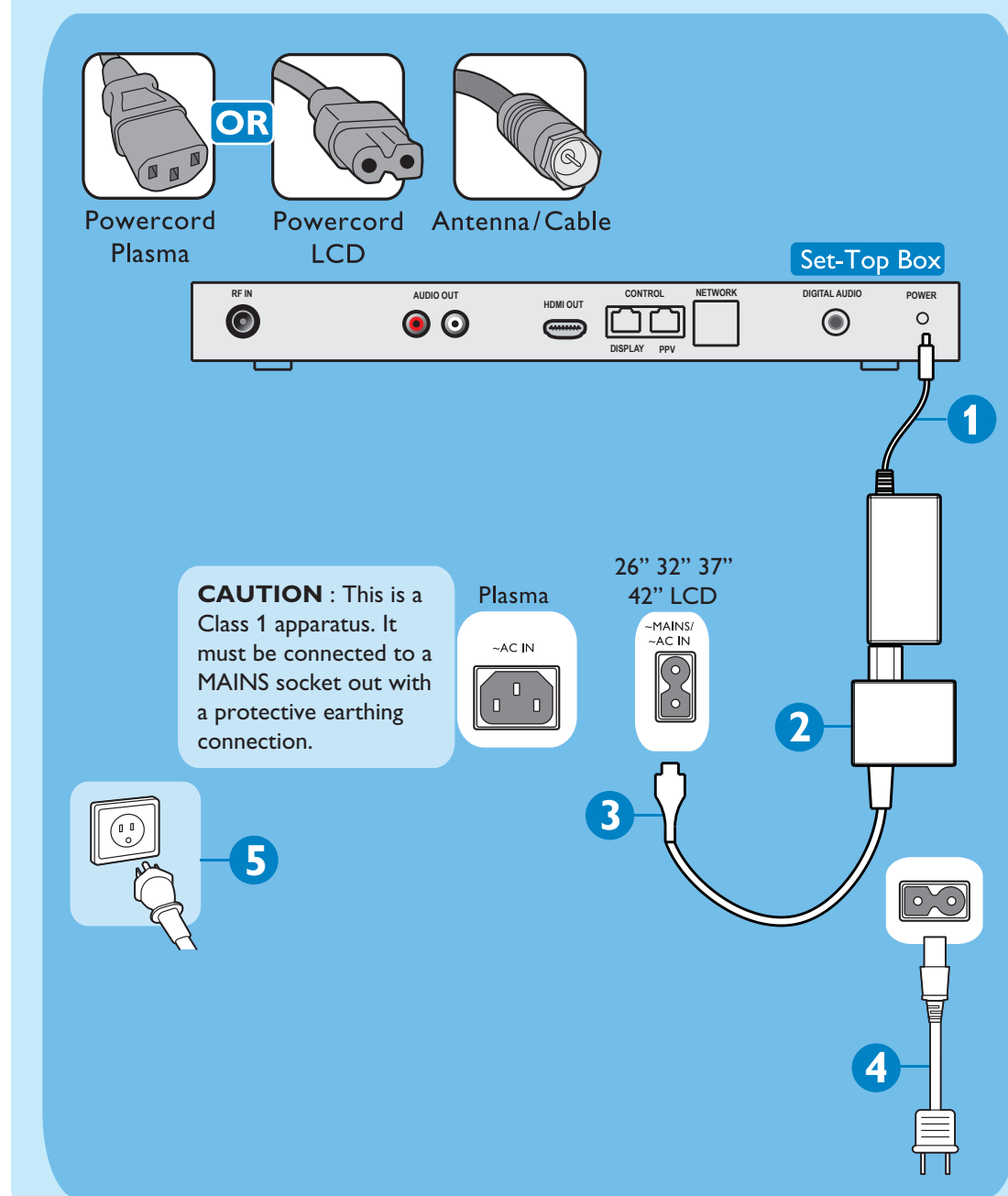
- 1 Use a HDMI connector cable to connect the Set-Top Box to the TV. Attach one end of the HDMI cable to the jack labeled **HDMI Out** on the Set-Top Box and the other end to the HDMI jack on the TV. If the TV has 2 HDMI jacks, ensure that the cable is connected to the jack labeled **HDMI 1** on the TV.
- 2 Connect the antenna cable to the antenna input of the Set-Top Box.
- 3 Use a RJ12 Data cable to connect the Set-Top box to the TV. Attach one end of the RJ12 Data cable to the jack labeled **DISPLAY** on the Set-Top box and the other end to the jack labeled **DATA1** on the TV.
- 4 After connecting all the cables, proceed to the next section and connect the Power cables.



2. Connect Power Cables

Note: Some TV sets may already have the cables connected.

- 1 Connect the power cable from the External Power Adaptor to the jack labeled **Power** on the Set-Top Box.
- 2 Attach the Mains Power Splitter to the External Power Adaptor.
- 3 Connect the power cable from the Mains Power Splitter to the AC-Inlet on the TV.
- 4 Connect the main power cord (packed with your TV) into the opening on the Mains Power Splitter.
- 5 After connecting all cables and devices, plug in the main power cord to the wall outlet and switch on the TV.



3. How to make the best connection

Use this guide to achieve the optimal connection for each of your components/devices. These cables are not provided with the set!

Best
★★★★



HDMI

HDMI provides an uncompressed, all-digital audio and video connection.

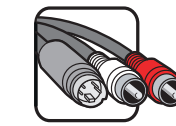
Better
★★★★



Component Video Input

Superior picture quality by separating the green, blue and red luminance signals. You can use the analogue left (white) and right (red) audio cables.

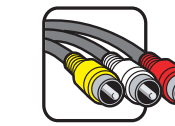
Good
★★★★



S-Video

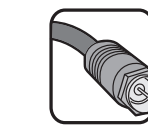
Supplies a better picture than RF and Composite connections. Used with left (white) and right (red) audio cables.

Basic
★★★★



Composite Audio/Video

Separate video (yellow) and left (white) and right (red) audio cables that provide basic connection from the cable box and other devices.



Antenna/Cable

★★★★

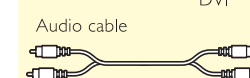
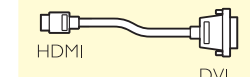
Provides a basic connection for normal antenna or cable. Contains both video & audio.

★★★★

Provides best quality for HDTV broadcast with antenna or cable connection.

HDMI to DVI-I

Converter cable



Devices with only a DVI connection can be connected with a DVI to HDMI converter cable. You must connect the Right (Red) and Left (White) audio connectors of AVI of the TV to the audio output connectors of the device. Go to menu => Setup => Source => Analog Audio In => and select HDMI.



Be responsible
Respect copyrights

Specifications are subject to change without notice.
Trademarks are the property of Koninklijke Philips Electronics N.V. or their respective owners.
© 2005 Koninklijke Philips Electronics N.V. All rights reserved.

www.philips.com



Free Manuals Download Website

<http://myh66.com>

<http://usermanuals.us>

<http://www.somanuals.com>

<http://www.4manuals.cc>

<http://www.manual-lib.com>

<http://www.404manual.com>

<http://www.luxmanual.com>

<http://aubethermostatmanual.com>

Golf course search by state

<http://golfingnear.com>

Email search by domain

<http://emailbydomain.com>

Auto manuals search

<http://auto.somanuals.com>

TV manuals search

<http://tv.somanuals.com>