

Philips Halogen Side Prong and Cool Beam PAR38 Flood Lamps

Featuring Halogen Technology



Photography by Padgett & Co.—Dennis Harris

Ideal for displays of perishable goods and where greater environmental comfort is desired

▶ Halogen Technology

Provides crisp, white light with excellent color rendering

Cool Beam

▶ Designed to Transmit Normal Radiated Lamp Heat Backwards, While Maintaining Beam Lumens

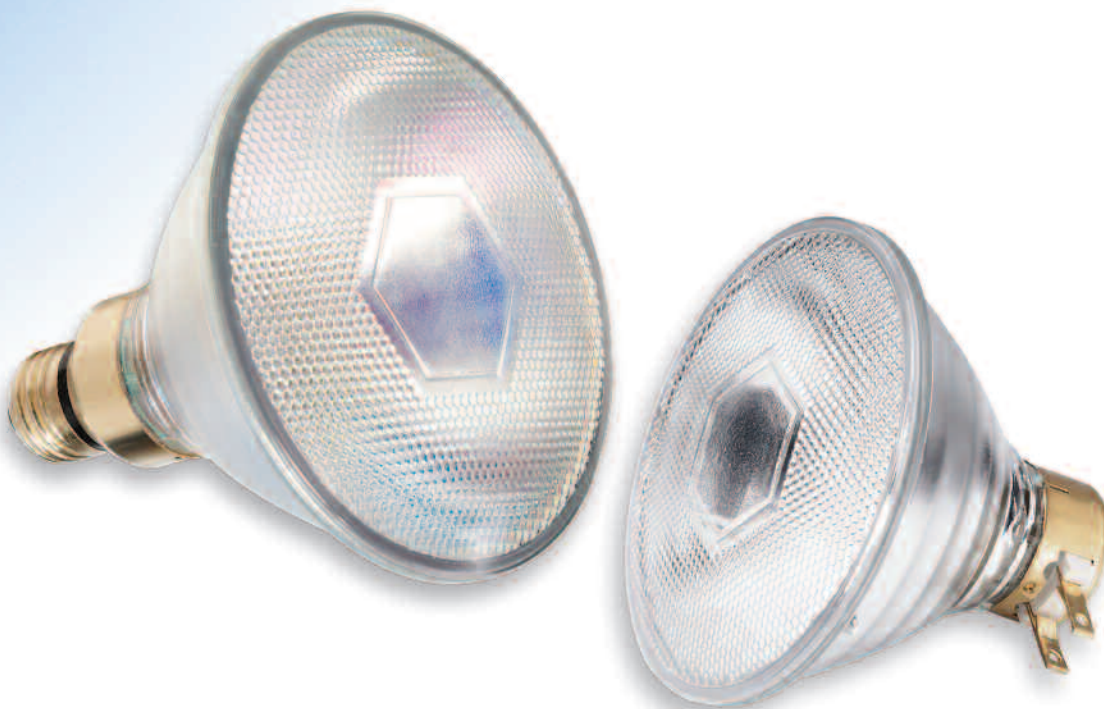
Dichroic coating transmits approximately 75% of the heat out of the back of the lamp

▶ Reduction of Heat Radiation

Advantages include minimum discoloration and drying out of displayed articles and greater environmental comfort

▶ Cool Flood

High lumen output and smooth round beam



PHILIPS

Philips Cool Beam and Side Prong PAR38 Lamps

Electrical, Technical and Ordering Data (Subject to change without notice)

Product Number	Ordering Code	Watts	Volts	Pkg Qty.	Description	Bulb Type	Base	Rated Avg. Life, Hours ¹	Approx. MBCP ²	Lumens	Class Filament	MOL (In.)
Cool Beam												
38884-3	60PAR38/HAL/2FL	60	130	12	Flood 25° Ratings @ 120V = 53W	PAR-38 Standard Reflector	Medium	3000 6000	2500	770 700	C, CC-8	5/16
38886-8	90PAR38/HAL/2FL	90	130	12	Flood 25° Ratings @ 120V = 79W	PAR-38 Standard Reflector	Medium	2500 5000	4500	1350 1000	C, CC-8	5/16
Side Prong												
38887-6	60PAR38/HAL/3FL	60	120	12	Flood 25°	PAR-38 Standard Reflector	Medium Side Prong	3000	3000	770	C, CC-8	4/16
38890-0	90PAR38/HAL/3FL	90	130	12	Flood 25° Ratings @ 120V = 79W	PAR-38 Standard Reflector	Medium Side Prong	2500 5000	4500	1350 1000	C, CC-8	4/16

Ordering and Shipping Data

Product Number	SKU UPC (0 46677-)	Outer Bar Code (5 0046677-)	Case Qty.	Case Weight (lbs.)	Case Cube (cu. ft.)	Pallet Qty.	SKUs Per Layer	Layers High	SKU Dimensions (W x D x H) (In.)	Case Dimensions (W x D x H) (In.)	Pallet Dimensions (W x D x H) (In.)
Cool Beam											
38884-3	38884 3	38884 8	12	10	0.95	720	180	4	4.63 x 4.63 x 5.69	9.44 x 14.31 x 12.13	42.93 x 47.20 x 48.52
38886-8	38886 7	38886 2	12	10	0.95	720	180	4	4.63 x 4.63 x 5.69	9.44 x 14.31 x 12.13	42.93 x 47.20 x 48.52
Side Prong											
38887-6	38887 4	38887 9	12	10	0.95	720	180	4	4.63 x 4.63 x 5.69	9.44 x 14.31 x 12.13	42.93 x 47.20 x 48.52
38890-0	38890 4	38890 9	12	10	0.95	720	180	4	4.63 x 4.63 x 5.69	9.44 x 14.31 x 12.13	42.93 x 47.20 x 48.52

1) Rated average life is the length of operation (in hours) at which point an average of 50% of the lamps will still be operational and 50% will not.

2) Maximum Beam Candlepower

NOTICE: To avoid deterioration of lampholder by heat, use only heat resistant lampholders of fixtures listed by a nationally recognized electrical testing organization for use with reflector or PAR lamps.

PAR HALOGEN CAUTION NOTICE: Before using bulb, see operating instructions on inside flap. Adherence to the operating instructions will reduce the risk of personal injury or fire. The filament capsule contained inside this glass bulb is pressurized, operates at high temperature and could unexpectedly shatter. Should the outer bulb break, particles of extremely hot glass could be discharged into the fixture and/or the surrounding environments, thereby creating a risk of personal injury or fire.

OPERATING INSTRUCTIONS: Before replacing, turn off power and let lamp cool to avoid electrical shock or burn.

- For indoor or outdoor use. A weather-protected fixture is recommended for wet locations.
- Suitable for use in open fixtures.
- Do not exceed the maximum wattage rating of the fixture.
- Do not use if outer glass is scratched or broken since it may break during operation or removal.
- If outer glass breaks the lamp may continue to light, however, immediately discontinue use.
- Due to heat that radiates from the bulb, do not use in close proximity to combustible materials or objects susceptible to drying or fading.
- Manage in accord with disposal laws.



Free Manuals Download Website

<http://myh66.com>

<http://usermanuals.us>

<http://www.somanuals.com>

<http://www.4manuals.cc>

<http://www.manual-lib.com>

<http://www.404manual.com>

<http://www.luxmanual.com>

<http://aubethermostatmanual.com>

Golf course search by state

<http://golfingnear.com>

Email search by domain

<http://emailbydomain.com>

Auto manuals search

<http://auto.somanuals.com>

TV manuals search

<http://tv.somanuals.com>