

Pioneer

PROFESSIONAL DJ MIXER

DJM-2000/2000nexus

Firmware Update Manual

Contents

DJM-2000/2000nexus Update Manual for Windows® 7	- 3 -
DJM-2000/2000nexus Update Manual for Windows Vista®	- 9 -
DJM-2000/2000nexus Update Manual for Windows® XP	- 15 -
DJM-2000/2000nexus Update Manual for Mac OS®	- 19 -
Check the current version of DJM-2000/2000nexus	- 22 -
Error Message and Details (for Windows)	- 23 -
Error Message and Details (for Mac OS)	- 23 -

DJM-2000/2000nexus Update Manual for Windows® 7

A . Check the unzipped file:

1. Unzip the downloaded file

Right click on downloaded file and unzip it by "Extract All" on menu.

2. Check the unzipped file

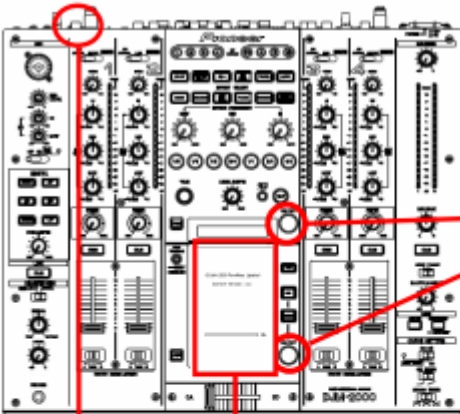
Unzipping the ZIP file generates "DJM-2000_v xxx "_ folder.

Confirm the following files are contained in the folder.

1. DJM2000_v xxx .exe
2. DJM2000_v xxx .upd

- ✓ xxx is version of new firmware.
- ✓ Extension (.exe or .upd) might not show on by the setting of the computer.

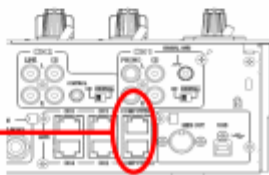
B . Setup DJ Mixer to update:



< **STEP1** > Press [ON/ OFF (BEAT EFFECT)] and [ON/ OFF (TOUCH PANEL EFFECT)] with power button. Move to update mode.

< **STEP2** > Check the current version of your firmware by "Current version" on touch panel. (No need to update it if current version shows as " $x.xx$ ". It is the latest firmware.)

< **STEP3** > Connect your computer with DJ Mixer by LAN cable.

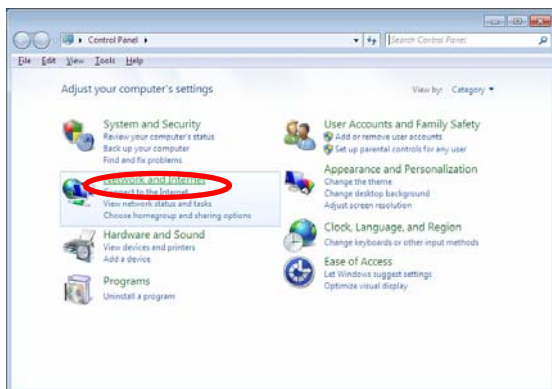


Connect LAN cable to the port of [COMPUTER 1 or 2] on rear on the DJ Mixer.

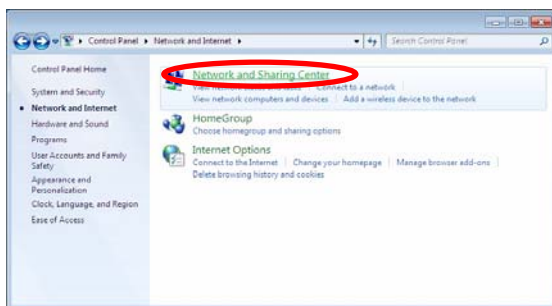
C . Update the firmware by computer operation:

1. Adjust network setting

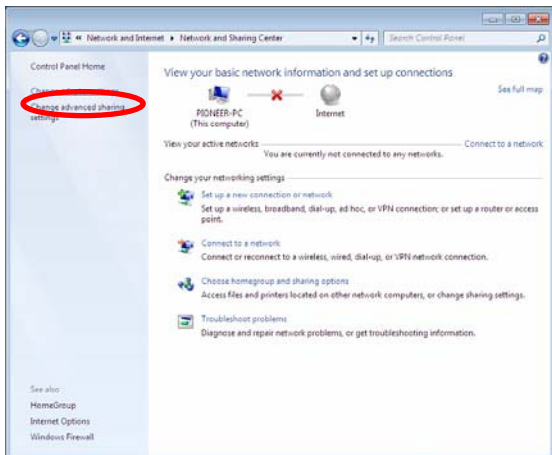
< **STEP1** > Open "Control Panel" -> "Network and Internet" -> "Network Connections".



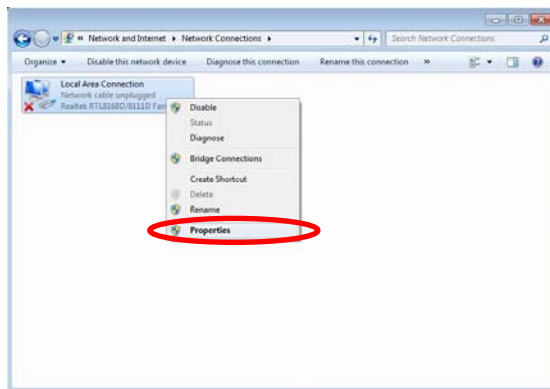
< **STEP2** > Open "Network and Sharing Center".



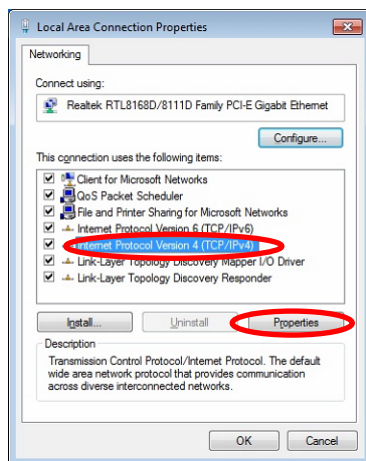
< **STEP3** > Open "Change adapter setting".



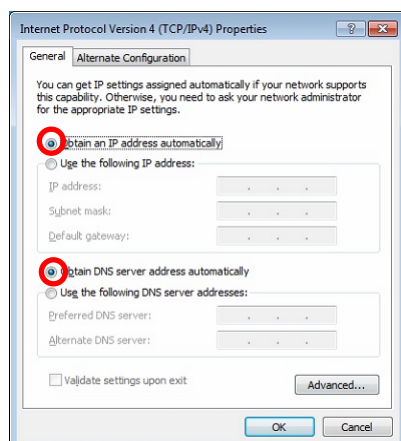
< **STEP4** > Open "Properties" of network device DJ Mixer connected.
(Right click on icon -> "Properties")



< **STEP5** > Select "Internet Protocol (TCP/IP) and click "Properties".

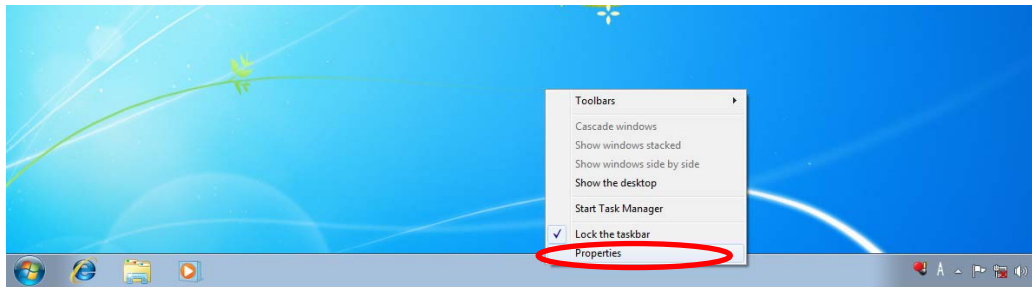


< **STEP6** > Select "Obtain an IP address automatically",
"Obtain DNS server address automatically".

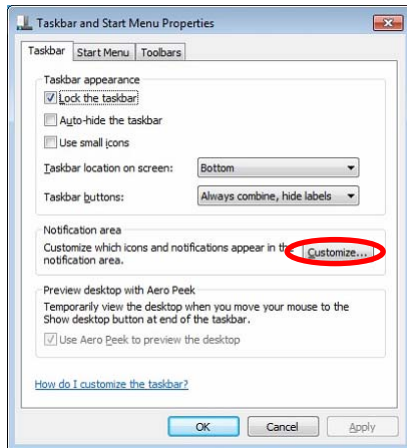


< **STEP7** > Close network Connections by "OK".

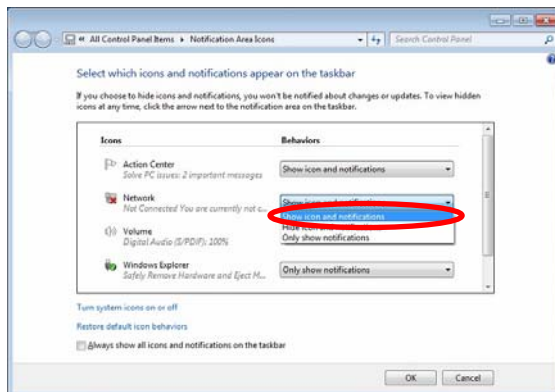
< **STEP8** > Right click on task bar -> Select "Properties".



< **STEP9** > Select "Notification area" -> "Customize".






< **STEP10** > Select "Show icon and notifications" on network.



< **STEP11** > Close "Properties" by "OK".

2. Confirm DJ Mixer and the computer are connected

You might check the status of connection by the icon on task bar (right bottom of picture).

Icon	Status of connection
	LAN cable is unconnected. Check the cable is connected.
	Checking the status of connection. Wait a minute.
	DJ Mixer is connected. Start update tool.

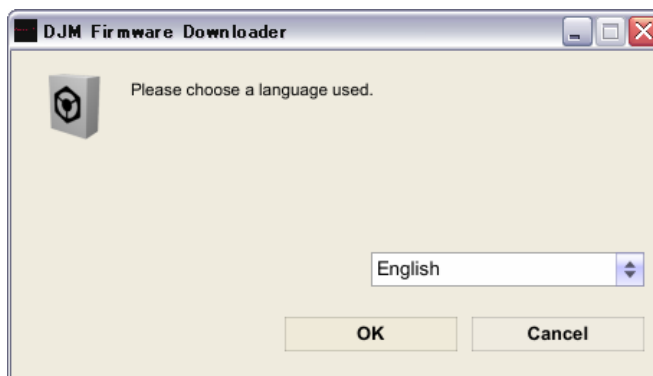
3. Start updating

- ✓ Close all of applications before updating.
- ✓ If you were setting firewall by security software, it would not be able to transfer the data to mixer.

Please read the operation manual of the security software or cancel the firewall.

< **STEP1** > Double click "DJM2000_vxxx.exe".
Start update tool.

< **STEP2** > Select language.



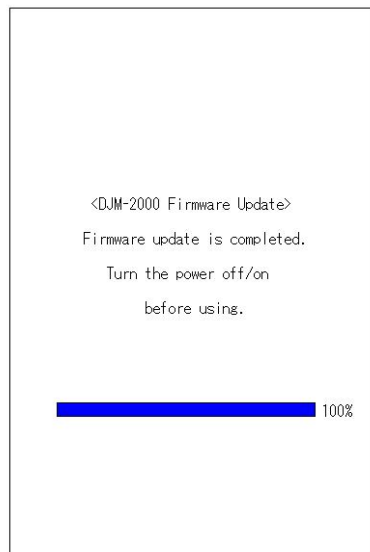
< **STEP3** > Start updating by pressing "Start".

- ✓ NEVER remove power/LAN cable on updating.
- ✓ If the waiting picture remains more than 30seconds, the network connection might not work. Press Cannel button and update again after connecting it.



< **STEP4** > Confirm the updating completed.

Updating completed when "update completed" message shows after meter touch panel reached 100%.



< **STEP5** > Restart DJ Mixer.

- ✓ Please adjust network setting as original if you adjusted it.

DJM-2000/2000nexus Update Manual for Windows Vista®

A . Check the unzipped file:

1. Unzip the downloaded file

Right click on downloaded file and unzip it by "Extract All" on menu.

2. Check the unzipped file

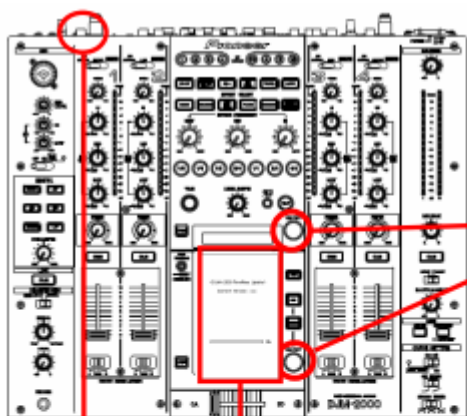
Unzipping the ZIP file generates "DJM-2000_vxxx" folder.

Confirm the following files are contained in the folder.

1. DJM2000_vxxx.exe
2. DJM2000_vxxx.upd

- ✓ xxx is version of new firmware.
- ✓ Extension (.exe or .upd) might not show on by the setting of the computer.

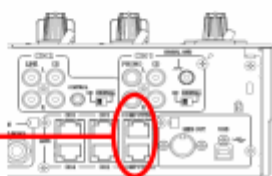
B . Setup DJ Mixer to update:



< **STEP1** > Press [ON/ OFF (BEAT EFFECT)] and [ON/ OFF (TOUCH PANEL EFFECT)] with power button. Move to update mode.

< **STEP2** > Check the current version of your firmware by "Current version" on touch panel. (No need to update it if current version shows as "x.xx". It is the latest firmware.)

< **STEP3** > Connect your computer with DJ Mixer by LAN cable.

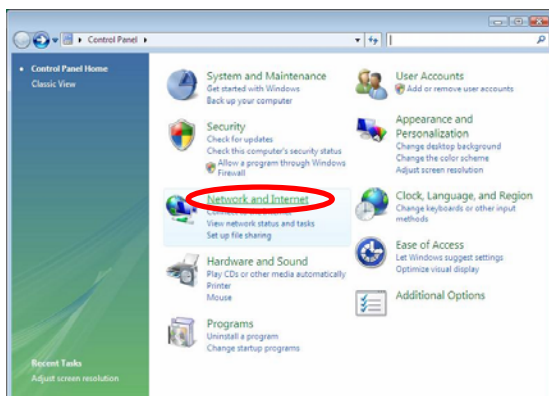


Connect LAN cable to the port of [COMPUTER 1 or 2] on rear on the DJ Mixer.

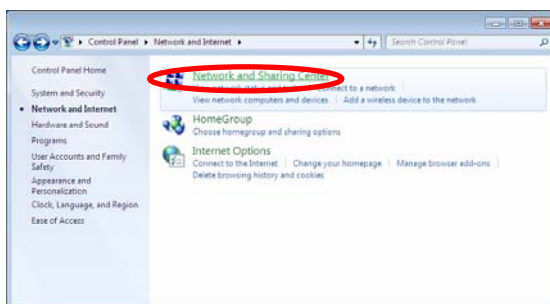
C . Update the firmware by computer operation:

1. Adjust network setting

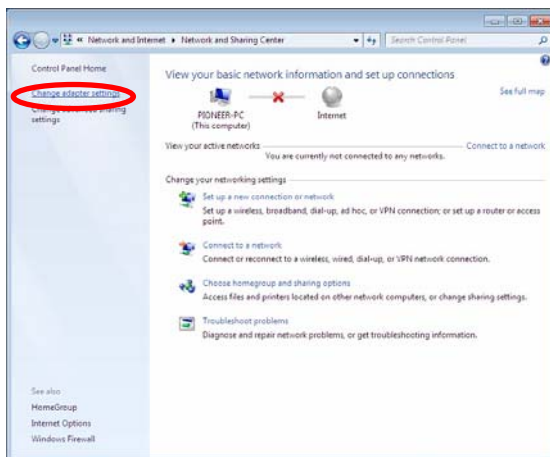
< **STEP1** > Open "Control Panel" -> "Network and Internet" -> "Network Connections".



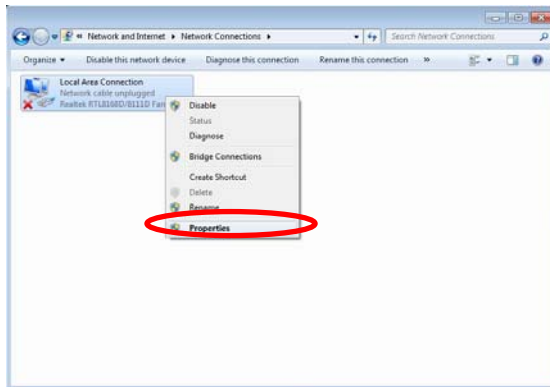
< **STEP2** > Open "Network and Sharing Center".



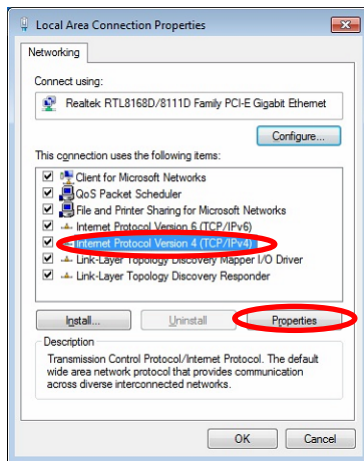
< **STEP3** > Open "Change adapter settings".



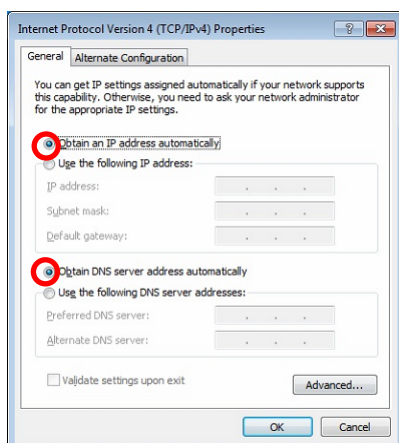
< **STEP4** > Open "Properties" of network device DJ Mixer connected.
(Right click on icon -> "Properties")



< **STEP5** > Select "Internet Protocol (TCP/IP) and click "Properties".

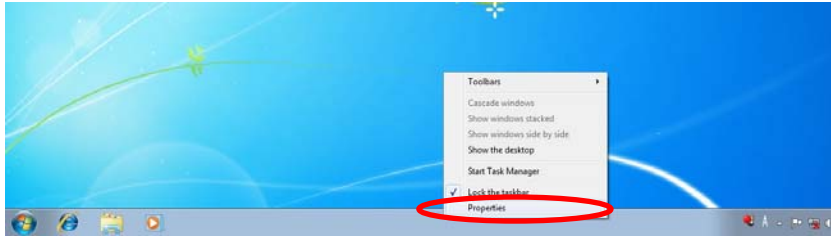


< **STEP6** > Select "Obtain an IP address automatically",
"Obtain DNS server address automatically".

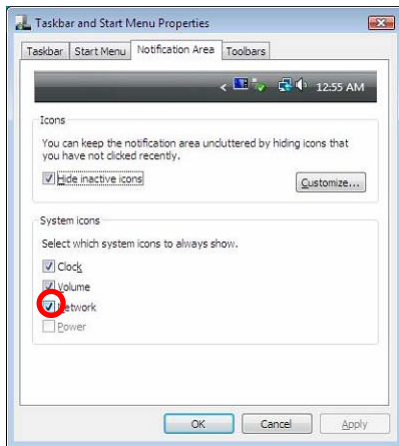


< **STEP7** > Close network Connections by "OK".

< **STEP8** > Right click on task bar -> Select "Properties".






< **STEP9** > Select "Notification area" and check "Network".



< **STEP10** > Close "Properties" by "OK".

2. Confirm DJ Mixer and the computer are connected

You might check the status of connection by the icon on task bar (right bottom of picture).

Message & Icon	<p>Not Connected</p> <p>You are currently not connected to any networks.</p> 	<p>Currently connected to:</p> <p>Identifying...</p> <p>Access: Limited Connectivity</p> 	<p>Currently connected to:</p> <p>Unidentified network</p> <p>Access: Limited Connectivity</p> 
Status of Connection	LAN cable is unconnected. Check the cable is connected.	Checking the status of connection. Wait a minute.	DJ Mixer is connected. Start update tool.

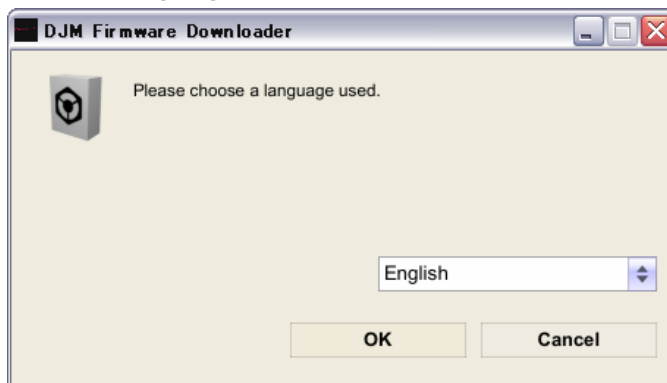
3. Start updating

- ✓ Close all of applications before updating.
- ✓ If you were setting firewall by security software, it would not be able to transfer the data to mixer.

Please read the operation manual of the security software or cancel the firewall.

< **STEP1** > Double click "DJM2000_vxxx.exe".
Start update tool.

< **STEP2** > Select language.



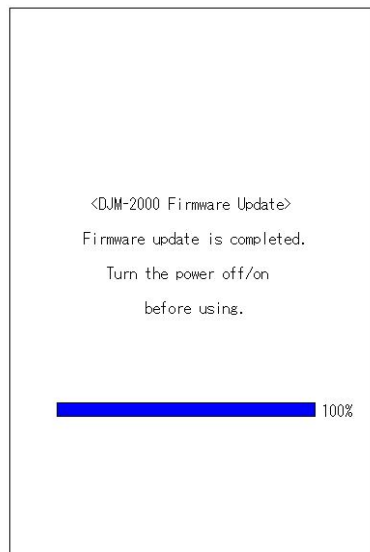
< **STEP3** > Start updating by pressing "Start".

- ✓ NEVER remove power/LAN cable on updating.
- ✓ If the waiting picture remains more than 30seconds, the network connection might not work. Press Cannel button and update again after connecting it.



< **STEP4** > Confirm the updating completed.

Updating completed when "update completed "message shows after meter touch panel reached 100%.



< **STEP5** > Restart DJ Mixer.

- ✓ Please adjust network setting as original if you adjusted it.

DJM-2000/2000nexus Update Manual for Windows® XP

A . Check the unzipped file:

1. Unzip the downloaded file

Right click on downloaded file and unzip it by "Extract All" on menu.

2. Check the unzipped file

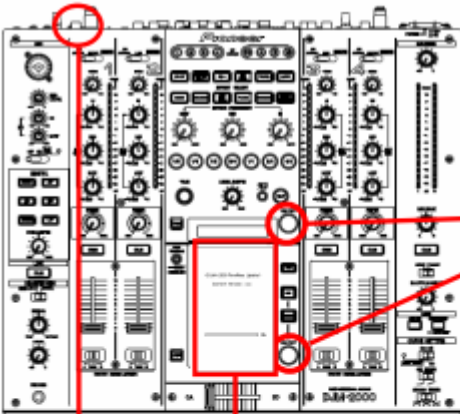
Unzipping the ZIP file generates "DJM-2000_v xxx "_ folder.

Confirm the following files are contained in the folder.

1. DJM2000_v xxx .exe
2. DJM2000_v xxx .upd

- ✓ xxx is version of new firmware.
- ✓ Extension (.exe or .upd) might not show on by the setting of the computer.

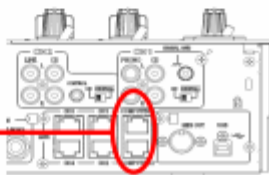
B . Setup DJ Mixer to update:



< **STEP1** > Press [ON/ OFF (BEAT EFFECT)] and [ON/ OFF (TOUCH PANEL EFFECT)] with power button. Move to update mode.

< **STEP2** > Check the current version of your firmware by "Current version" on touch panel. (No need to update it if current version shows as " $x.xx$ ". It is the latest firmware.)

< **STEP3** > Connect your computer with DJ Mixer by LAN cable.

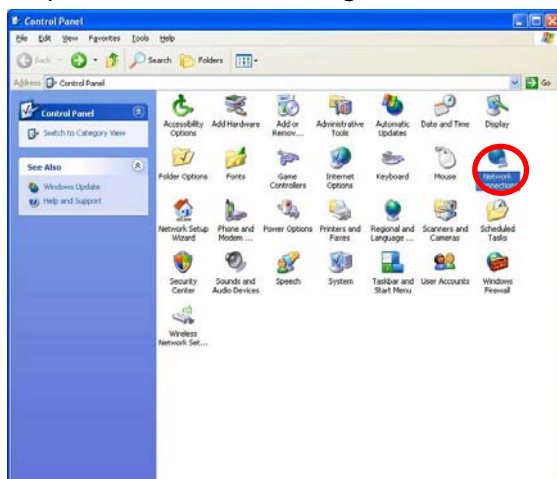


Connect LAN cable to the port of [COMPUTER 1 or 2] on rear on the DJ Mixer.

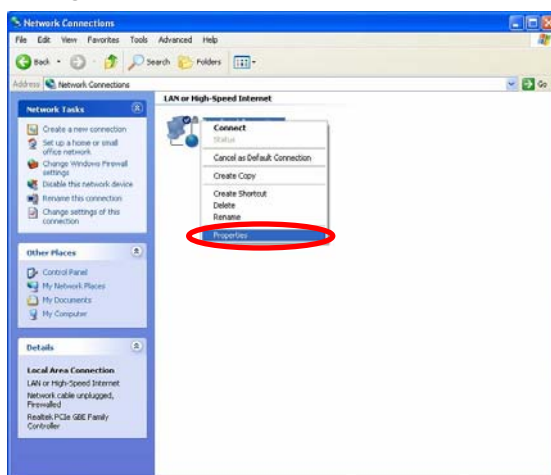
C . Update the firmware by computer operation:

1. Adjust network setting

< **STEP1** > Open "Start" -> "Setting" -> "Control Panel" -> "Network Connections".

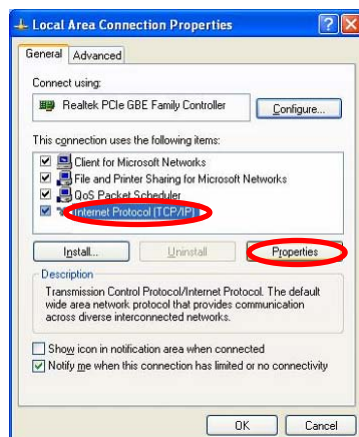


< **STEP2** > Open "Properties" of network device DJ Mixer connected.
(Right click on icon -> "Properties")

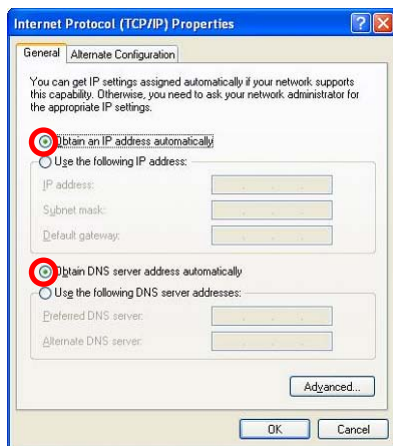


< **STEP3** > Check the box of "Notify me when this connection has limited or no connectivity".

< **STEP4** > Select "Internet Protocol (TCP/IP)" and click "Properties".






< **STEP5** > Select "Obtain an IP address automatically",
"Obtain DNS server address automatically".



< **STEP6** > Close network Connections by "OK".

2. Confirm DJ Mixer and the computer are connected

You might check the status of connection by the icon on task bar (right bottom of picture).

Icon	Status of connection
	LAN cable is unconnected. Check the cable is connected.
	Checking the status of connection. Wait a minute.
	DJ Mixer is connected. Start update tool.

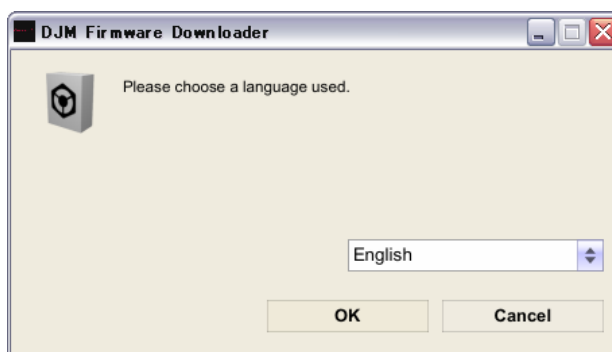
3. Start updating

- ✓ Close all of applications before updating.
- ✓ If you were setting firewall by security software, it would not be able to transfer the data to mixer.

Please read the operation manual of the security software or cancel the firewall.

< **STEP1** > Double click "DJM2000_vxxx.exe".
Start update tool.

< **STEP2** > Select language.



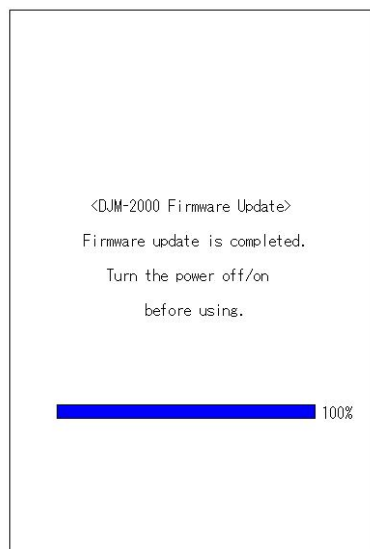
< **STEP3** > Start updating by pressing "Start".

- ✓ NEVER remove power/LAN cable on updating.
- ✓ If the waiting picture remains more than 30seconds, the network connection might not work. Press Cannel button and update again after connecting it.



< **STEP4** > Confirm the updating completed.

Updating completed when "update completed" message shows after meter touch panel reached 100%.



< **STEP5** > Restart DJ Mixer.

- ✓ Please adjust network setting as original if you adjusted it.

DJM-2000/2000nexus Update Manual for Mac OS®

A . Check the unzipped file:

1. Unzip the downloaded file

Right click on downloaded file and unzip it by "Extract All" on menu.

2. Check the unzipped file

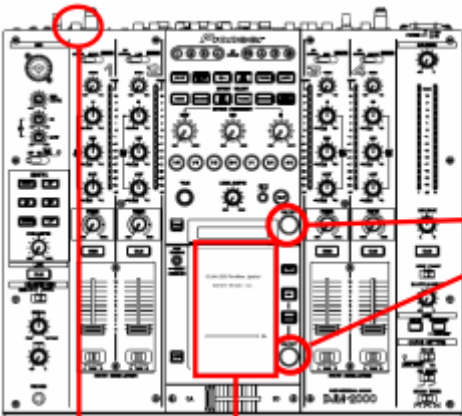
Unzipping the ZIP file generates "DJM-2000_vxxx" folder.

Confirm the following files are contained in the folder.

1. DJM2000_vxxx

✓ xxx is version of new firmware.

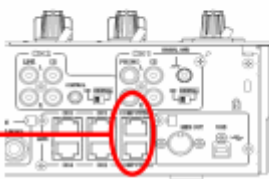
B . Setup DJ Mixer to update:



< **STEP1** > Press [ON/ OFF (BEAT EFFECT)] and [ON/ OFF (TOUCH PANEL EFFECT)] with power button. Move to update mode.

< **STEP2** > Check the current version of your firmware by "Current version" on touch panel. (No need to update it if current version shows as "x.xx". It is the latest firmware.)

< **STEP3** > Connect your computer with DJ Mixer by LAN cable.



Connect LAN cable to the port of [COMPUTER 1 or 2] on rear on the DJ Mixer.

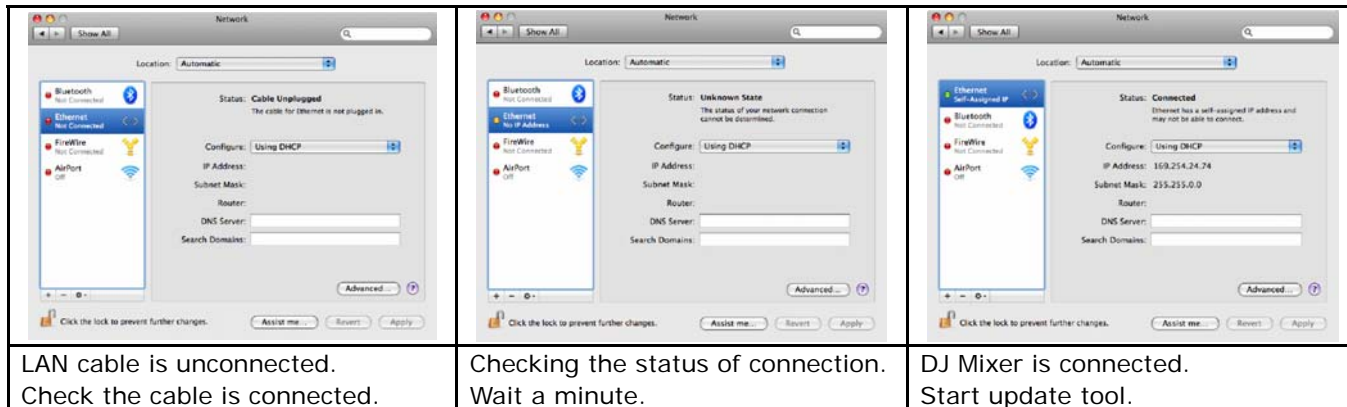
C . Update the firmware by computer operation:

1. Adjust network setting

Open "System Performance" -> "Network" -> "Ethernet" -> "Using DHCP".

3. 2. Confirm DJ Mixer and the computer are connected

You can check the status of connection on "System Performance" -> "Network" -> "Ethernet".



3. Start updating

- ✓ Close all of applications before updating.
- ✓ If you were setting firewall by security software, it would not be able to transfer the data to mixer.

Please read the operation manual of the security software or cancel the firewall.

< **STEP1** > Double click "DJM2000_vxxx.exe".
Start update tool.

< **STEP2** > Select language.



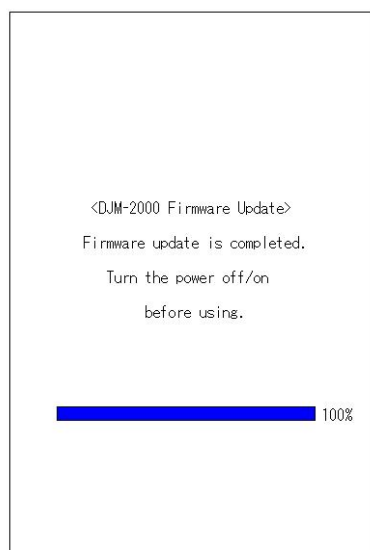
< **STEP3** > Start updating by pressing "Start".

- ✓ NEVER remove power/LAN cable on updating.
- ✓ If the waiting picture remains more than 30seconds, the network connection might not work. Press Cannel button and update again after connecting it.



< **STEP4** > Confirm the updating completed.

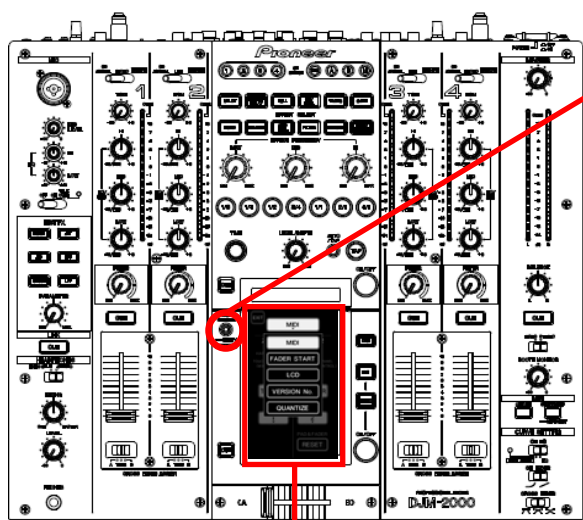
Updating completed when "update completed" message shows after meter touch panel reached 100%.



< **STEP5** > Restart DJ Mixer.

- ✓ Please adjust network setting as original if you adjusted it.

Check the current version of DJM-2000/2000nexus



< **STEP1** > Enter to "USER SET UP" mode.
Press [LIVE SAMPLER(UTILITY, WAKE UP)]
one more second.

< **STEP2** > Select "VERSION No."
Check it is the latest version.
Update was completed if it shows "x.xx".



< **STEP3** > Close "USER SET UP" mode.
Press [EXIT] on top of left.

Error Message and Details (for Windows)

Title	Message	Detail
Formatting Error	Cannot find the EXE file_I1	Cannot find the EXE file. Restart the application.
	Cannot find the UpdateFile_I4	Cannot find the update file or update file is not correct. Download the file and update again.
	Cannot connect to the MIXER_I5	Failed connection with mixer. Check the status of network and restart the application.
	Cannot find the Network Interface_I6	Cannot find the network setting to connect with mixer. Check the status of network and restart the application.
	Cannot find the Network Interface_I9	Cannot find network interface to connect with mixer. Check the status of network and restart the application.
Connection Error	Cannot connect the MIXER_C1	Could not connect with mixer. Check the status of network and restart the application.
	Cannot connect the MIXER_C2	Could not connect with mixer. Check the status of network and restart the application.
	Cannot send the update data_C4	Failed data transfer to mixer. Stand up mixer again by update mode and restart the application.
Data Transfer Error	Cannot find the UpdateFile_S1	Cannot find the update file. Download the file and update again.
	Cannot find the UpdateFile_S2	Failed data transfer to mixer. The file might have a problem. Stand up mixer again by update mode and restart the application.
	Cannot find the UpdateFile_S3	Failed data transfer to mixer. Stand up mixer again by update mode and restart the application.

Error Message and Details (for Mac OS)

Title	Message	Detail
Formatting Error	Cannot find the EXE file_I2	Cannot find the EXE file. Restart the application.
	Cannot find the EXE file_I3	Cannot find the EXE file. Restart the application.
	Cannot find the UpdateFile_I4	Cannot find the update file or update file is not correct. Download the file and update again.
	Cannot get the Host name_I7	Cannot get the host name. Check the status of network and restart the application.
	Cannot get the IP Address_I8	Cannot get IP address. Check the status of network and restart application.
	Cannot find the Network Interface_I9	Cannot find network I/F to connect with mixer. Check the status of network and restart the application.
Connection Error	Cannot connect the MIXER_C1	Could not connect with mixer. Check the status of network and restart the application.
	Cannot connect the MIXER_C2	Could not connect with mixer. Check the status of network and restart the application.
	Cannot connect the MIXER_C3	Could not connect with mixer. Check the status of network and restart the application.
	Cannot send the update data_C4	Failed data transfer to mixer. Stand up mixer again by update mode and restart the application.
Data Transfer Error	Cannot find the UpdateFile_S1	Cannot find the update file. Download the file and update again.
	Cannot find the UpdateFile_S2	Failed data transfer to mixer. The file might have a problem. Stand up mixer again by update mode and restart the application.
	Cannot find the UpdateFile_S3	Failed data transfer to mixer. Stand up mixer again by update mode and restart the application.

About trademarks and registered trademarks

- Microsoft and Windows are either registered trademarks or trademarks of Microsoft Corporation in the United States and/ or other countries.
- Mac and Mac OS are trademarks of Apple Inc., registered in the U.S. and other countries.
- Pioneer is a registered trademark of PIONEER CORPORATION.

© 2012 PIONEER CORPORATION. All rights reserved.

PIONEER CORPORATION

1-1, Shin-ogura, Saiwai-ku, Kawasaki-shi, Kanagawa 212-0031, Japan

Free Manuals Download Website

<http://myh66.com>

<http://usermanuals.us>

<http://www.somanuals.com>

<http://www.4manuals.cc>

<http://www.manual-lib.com>

<http://www.404manual.com>

<http://www.luxmanual.com>

<http://aubethermostatmanual.com>

Golf course search by state

<http://golfingnear.com>

Email search by domain

<http://emailbydomain.com>

Auto manuals search

<http://auto.somanuals.com>

TV manuals search

<http://tv.somanuals.com>