



**PA1575R All-in-One  
Touchscreen Computer**

**USER'S GUIDE**


[www.planartouch.com](http://www.planartouch.com)

The information contained in this document is subject to change without notice.

This document contains proprietary information that is protected by copyright. All rights are reserved. No part of this document may be reproduced, translated to another language or stored in a retrieval system, or transmitted by any means, electronic, mechanical, photocopying, recording, or otherwise, without prior written permission. Windows is a registered trademark of Microsoft, Inc. Other brand or product names are trademarks of their respective holders.

The test results show that this device meets the FCC rules. Those limits are set to protect residential areas from the devices with harmful emission. This device will produce, use and radiate radio frequency energy. In addition, failure to follow the user's manual to install or use this device might produce harmful interference with radio communication. Notwithstanding the foregoing, it does not guarantee that this type of harmful interference does not occur in some special installations. The interference caused by this device to the reception of radio or television signals may be verified by turning it on and off. Any changes or modifications to this TFT LCD would void the user's authority to operate this device.

## **Important Recycle Instructions:**

 Lamp(s) inside this product contains mercury. This product may contain other electronic waste that can be hazardous if not disposed of properly. Recycle or dispose in accordance with local, state, or federal Laws. For more information, contact the Electronic Industries Alliance at [WWW.EIAE.ORG](http://WWW.EIAE.ORG). For lamp specific disposal information check [WWW.LAMPRECYCLE.ORG](http://WWW.LAMPRECYCLE.ORG).

For more information on how to recycle your product, please visit [WWW.PLANARSYSTEMS.COM/GREEN](http://WWW.PLANARSYSTEMS.COM/GREEN).

# Table of Contents

## Usage Notice

Precautions .....	1
-------------------	---

## Introduction

About PA1575R .....	2
Package Overview .....	3

## Installation

Product Overview .....	4
Start Your Installation .....	5
Kensington Security Slot .....	6
VESA Mount For Your Computer .....	7
Remove the Deskstand .....	8

## User Controls

Side Panel Controls .....	9
Initial Turn-On .....	10
XP PRO Initial On Steps .....	10
Test Devices .....	17
Testing the Touchscreen .....	17
Recovering the Operating System .....	18
1.Using the Recovery CD .....	18
2.PA1575R Touchscreen Driver Install Instructions .....	26
Environmental Specifications .....	27
Touch Computer Specifications .....	28
Display Specifications .....	29
Power Supply Specifications .....	29

## Appendix

Troubleshooting .....	33
Product Dimensions .....	34
Compatibility Modes .....	35
Product Registration and Technical Support .....	36

# Usage Notice



**Warning** - To prevent the risk of fire or shock hazards, do not expose this product to rain or moisture.



**Warning** - Please do not open or disassemble the product as this may cause electric shock.

## Precautions

Follow all warnings, precautions and maintenance as recommended in this user's manual to maximize the life of your unit.

### **Do:**

- Turn off the product before cleaning.
- Touch screen surface may be cleaned using a soft clean cloth moistened with mild window glass commercial cleaners or 50/50 mixture of water and isopropyl alcohol.
- Use a soft cloth moistened with mild detergent to clean the display housing.
- Use only high quality and safety approved AC/DC adapter.
- Disconnect the power plug from AC outlet if the product is not going to be used for an extended period of time.

### **Don't:**

- Do not touch the LCD display screen surface with sharp or hard objects.
- Do not use abrasive cleaners, waxes or solvents for your cleaning.
- Do not operate the product under the following conditions:
  - Extremely hot, cold or humid environment.
  - Areas susceptible to excessive dust and dirt.
  - Near any appliance generating a strong magnetic field.
  - In direct sunlight.

# Introduction

## About PA1575R

The PA1575R Series is All-in-One Touch computer model, it has a 15" flat panel screen with an active matrix, thin-film transistor (TFT) liquid crystal display (LCD). The TPC-152x incorporates the Mobile Intel® Atom processor N270 at 1.6GHz, FSB533 and the Mobile Intel 945GSE Express Chipset with the ICH7M.

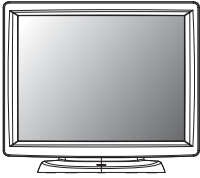
### Features include:

- Intel Atom processor N270, 1.6GHz, FSB 533MHz
- Onboard 10/100 BaseT and Gigabit LAN
- 7 ports, USB 2.0(Ext x 3, Int x 4)
- 2 x DB9 for COM1/COM2
- 1 x Digital displays(DVI-D)
- 1 x Line out
- 1 x 12V power jack
- 1024x768 XGA resolution
- 15" viewable display area
- Kensington security slot
- 75 mm VESA mount
- Touch function with USB interface
- Built-in speakers-1W x 2

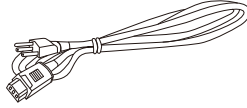
## Touch Screen for PA1575RXP

- Analog 5-wire resistive touch screen for finger and stylus input
- Surface: Anti-glare treatment
- Interface: USB controller
- Durability: 35 million touches at a single point
- Hardness of surface: 3H Typical
- Operating force: 40g~200g when using a silicon rubber tipped pen with a 1mm diameter minimum and a hardness of 60 degree.
- Transmittance: 82%±5%

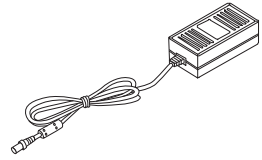
# Package Overview



LCD Touch Computer



Power Cord



DC Power Supply



Recovery CD



Touch Screen Driver  
Installation CD-ROM



Landing Strip

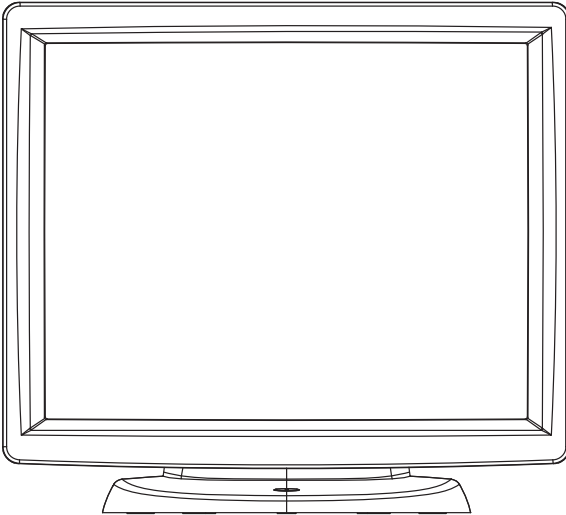


User's Guide

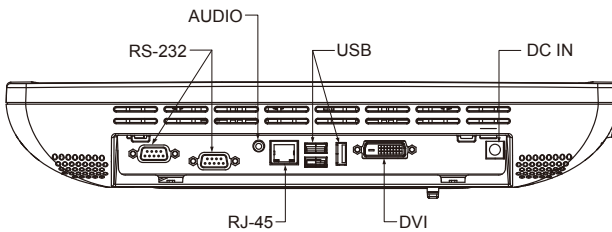
# Installation

## Product Overview

### • Front View



### • Button View (Without Stand)



## Start Your Installation

### Remove the Back Cover

Please follow these instructions to remove the cover on the back panel of the LCD so that you can hookup the cables to associated connector.

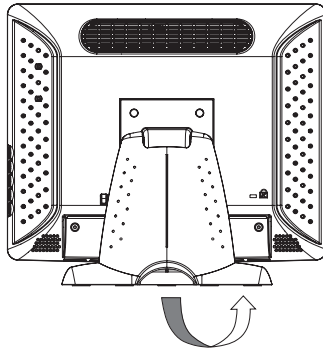
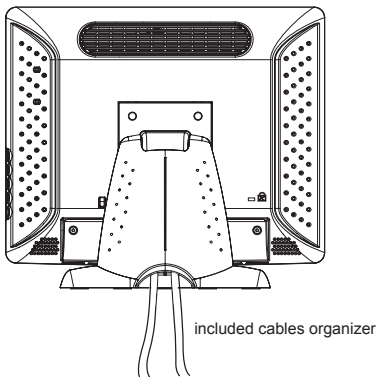


Figure A

1. Remove the stand back cover by pulling in the direction of the arrow.
2. Connect applicable cables to the appropriate connectors.
3. Re-attach the stand back cover by pressing firmly until the tabs snap into place. You may also keep the cables in order by using the cable organizer.



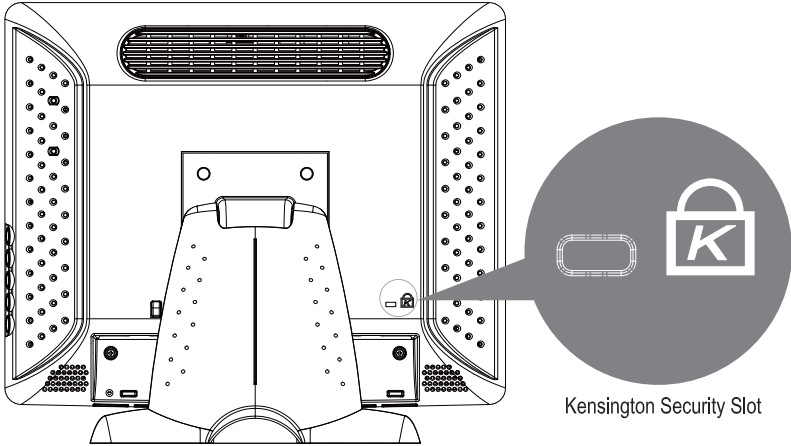
#### **Note!**

*You can place the LCD flat horizontally to make it easier to connect the cables. Please make sure that you place it on an even surface lest the LCD should be damaged by scratches or collision.*



## Kensington Security Slot

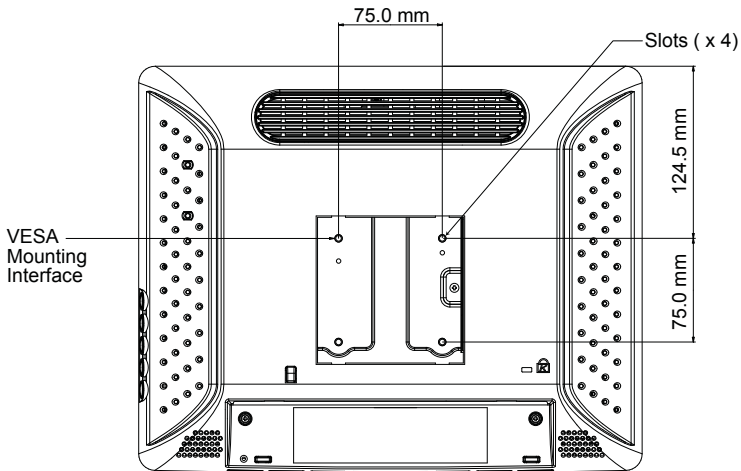
The computer can be secured to your desk or any other fixed object with Kensington lock security products. The Kensington lock is not included.



## VESA Mount For Your Computer

This computer conforms to the VESA Flat Panel Mounting Physical Mounting Interface Standard which defines a physical mounting interface for flat panel computers, and corresponding with the standard mounting devices of flat panel computer, such as wall and table arms. The VESA mounting interface is located on the back of touch computer.

To mount the computer on a swing arm or other mounting fixture, follow the instructions included with the mounting fixture to be used, please note to mount touch computer to the devices (either mounting fixture or swing arm) what conforms to the UL listed.



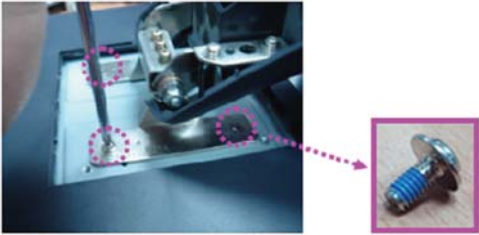
### **Warning!**

***Please select the proper screws!***

***The distance between the back cover surface and the bottom of the screw hole is 8 mm. Please use four M4 screws diameter with proper length to mount your monitor.***

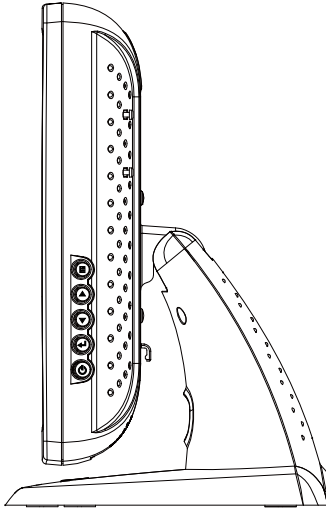
***Please note: the mounting stand must be able to support at least 11 lbs ( 5Kg).***






## Remove the Deskstand






	<p>1. Remove stand back cover.</p>
	<p>2. Remove hinge cover.</p>
	<p>3. Remove 4 screws and then remove hinge.</p>

# User Controls

## Side Panel Controls



Icon	Key Name
	Menu
	Up
	Down
	Enter
	Power

OSD Key	Menu off status	Menu on status
	Menu appear	Menu disappear / return to main item
	Brightness	Main item select up / Adjust up
	Mute	Main item select down / Adjust down
	Enter/Select sub-item function	
	Power On/Off	

## Initial Turn-On

The initial setup of the operating system takes approximately 5-10 minutes. Additional time may be needed depending on touch computer hardware configuration and connected devices. To setup the Windows OS for the touch computer, turn on the touch computer and follow the instructions on the screen.

## XP PRO Initial On Steps

### Step 1. Boot Computer

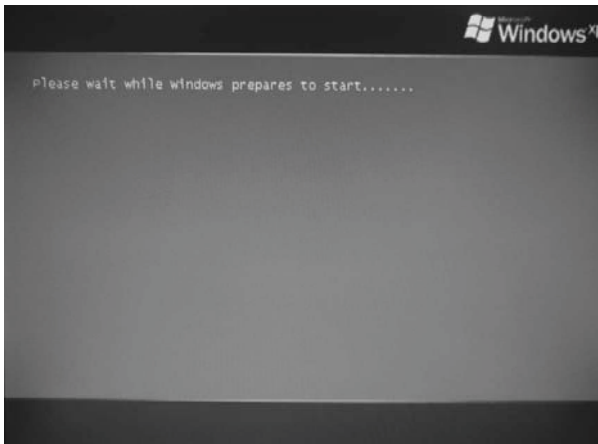
```
PCI device listing ...
Bus No. Device No. Func No. Vendor/Device Class Device Class IRQ
-----
0 2 0 8086 2592 0300 Display Cntrlr 7
0 27 0 8086 2668 0403 Multimedia Device 7
0 29 0 8086 2658 0C03 USB 1.0/1.1 UHCI Cntrlr 9
0 29 1 8086 2659 0C03 USB 1.0/1.1 UHCI Cntrlr 5
0 29 2 8086 265A 0C03 USB 1.0/1.1 UHCI Cntrlr 5
0 29 3 8086 265B 0C03 USB 1.0/1.1 UHCI Cntrlr 7
0 29 7 8086 265C 0C03 USB 2.0 EHCI Cntrlr 9
0 31 2 8086 2653 0101 IDE Cntrlr 14
0 31 3 8086 266A 0C05 SMBus Cntrlr 5
1 0 0 10EC 8168 0200 Network Cntrlr ACPI Controller 7
          9

Verifying DMI Pool Data .....

Intel UNDI, PXE-2.1 (build 082)
Copyright (C) 1997-2000 Intel Corporation

For Realtek RTL8111B/8111C Gigabit Ethernet Controller v2.13 (071227)
PXE-E61: Media test failure, check cable
PXE-NBF: Exiting PXE ROM.
Boot from CD :

Press any key to boot from CD...
```

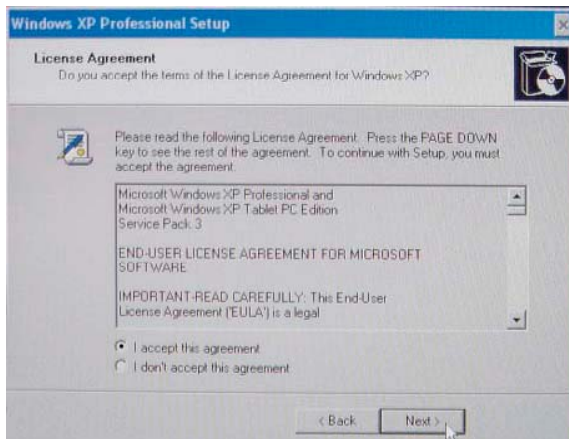




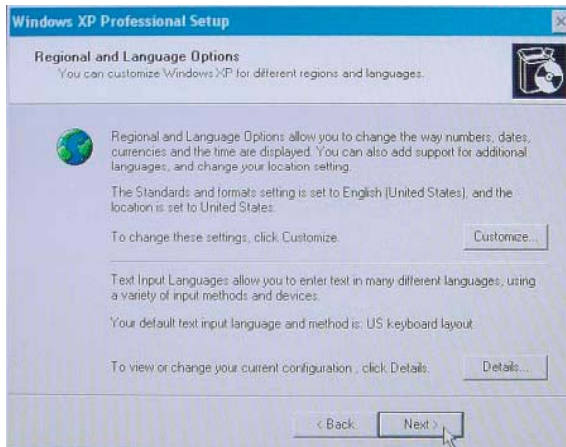
## Step 2. Press "Next"



## Step 3. Read agreement and press " I accept this agreement" and "Next".

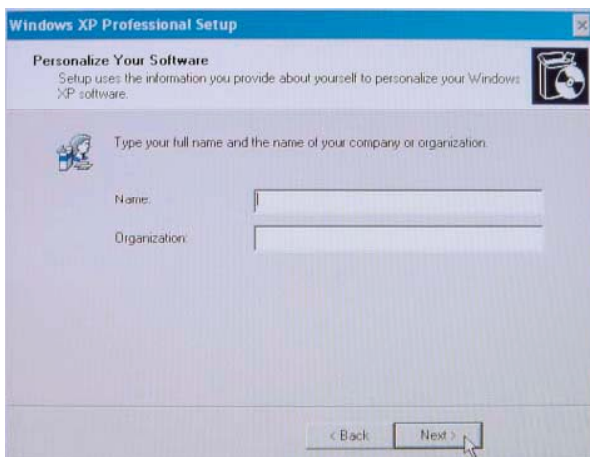


## Step 4. Language Selection, Press "Next"

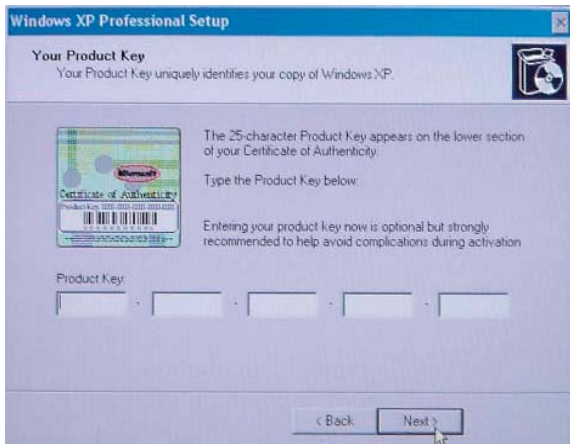


Click Customize. The Regional and Language window shown below will appear.

## Step 5. Type your full name, organization and press "Next"



## Step 6. Type product key and press "Next"



Please find the "Certificate of Authenticity" license label on the back-cover.

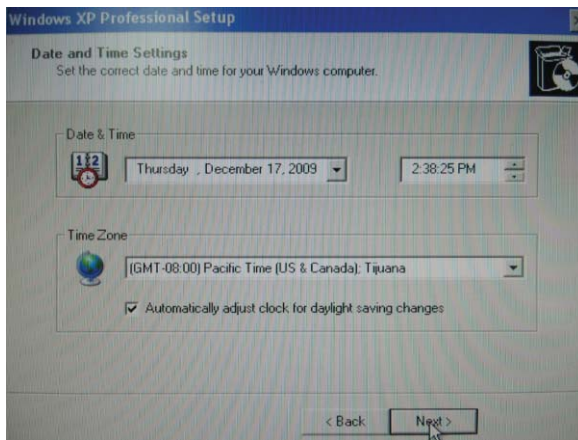




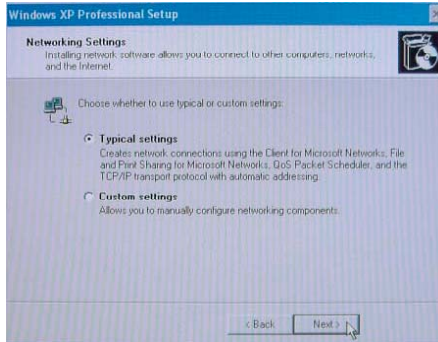
## Step 7. Setup your computer name, administrator password and press "Next"



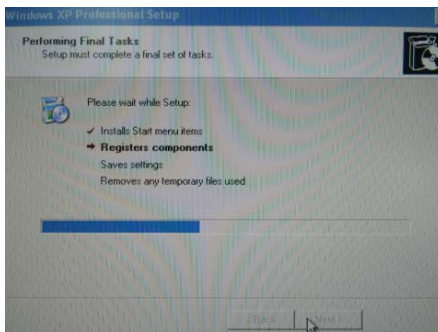
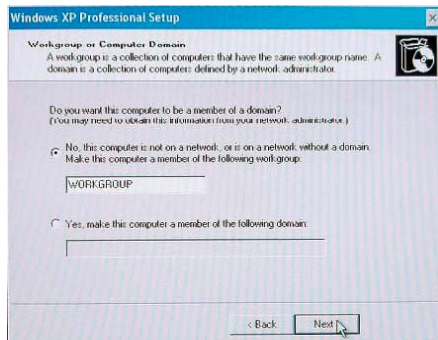
## Step 8. Date and Time Settings, Setup your computer date and time and press "Next"



## Step 9. Choose typical or custom setting and press "Next"



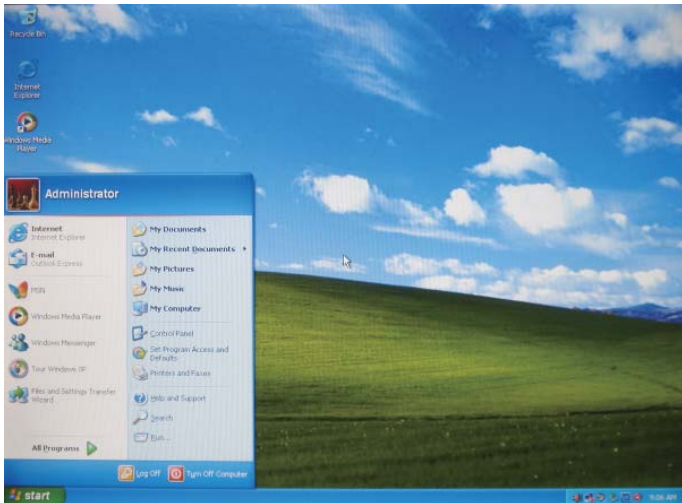
## Step 10. Choose applicable option



## Step 11. Press "Finish"



## Step 12. Finish and launch windows system



# Test Devices

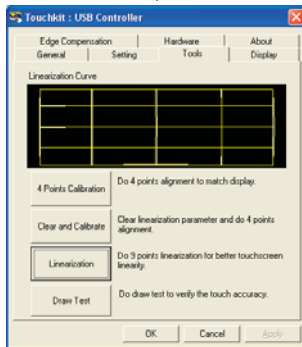
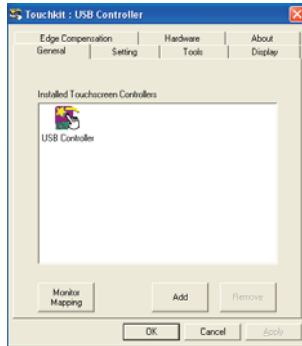
The touch computer can be pre-installed with several different hardware options. To test an optional device that is installed on the touch computer, follow the instructions below.

**NOTE:** Testing icons are located on the desktop. Testing of a particular device can only be done after the device is properly installed.

## Testing the Touchscreen

The touchscreen is pre-calibrated for accurate touch response.

**Calibration\*** If for any reason the touchscreen needs to be re-calibrated, double-click the Touchscreen-test icon. The window shown below will open.



# Recovering the Operating System

If the touch computer's operating system and software needs to be recovered, insert the included recovery disk into an external DVD-ROM (sold separately) and reboot the touch computer. Follow the on-screen instructions to complete recovery.

**NOTE:** All data will be deleted during the recovery process. User must back up files prior to recovering the operating system.

## 1. Using the Recovery CD For XP Pro

To recover your pre-installed software using the recovery CD, do as follows:

- Step 1.** From the Start menu, restart your computer.
- Step 2.** Insert "Recovery CD" in CD-ROM to begin sequence.
- Step 3.** Press any key to boot from CD

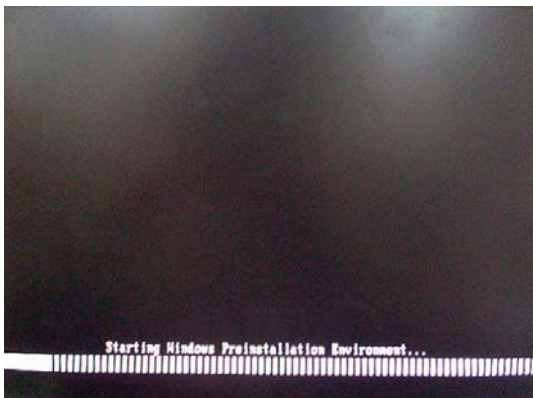
```
PCI device listing ...
Bus No. Device No. Func No. Vendor/Device Class Device Class IRQ
0 2 0 8086 2592 0300 Display Contrl 7
0 27 0 8086 2668 0403 Multimedia Device 7
0 29 0 8086 2658 0C03 USB 1.0/1.1 UHCI Contrl 9
0 29 1 8086 2659 0C03 USB 1.0/1.1 UHCI Contrl 5
0 29 2 8086 265A 0C03 USB 1.0/1.1 UHCI Contrl 5
0 29 3 8086 265B 0C03 USB 1.0/1.1 UHCI Contrl 7
0 29 7 8086 265C 0C03 USB 2.0 EHCI Contrl 9
0 31 2 8086 2653 0101 IDE Contrl 14
0 31 3 8086 266A 0C05 SMBus Contrl 5
1 0 0 18EC 8168 0200 Network Contrl 7
ACPI Controller 9

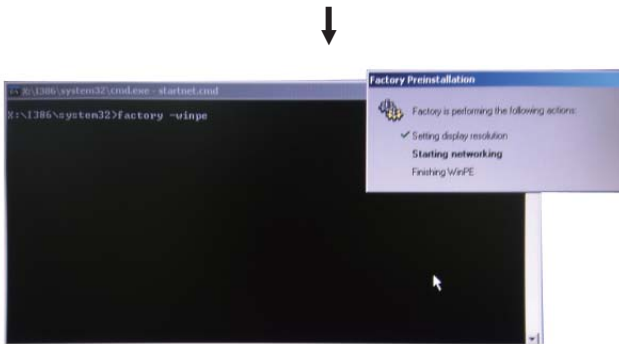
Verifying DMI Pool Data .....

Intel UNDI, PXE-2.1 (build 082)
Copyright (C) 1997-2000 Intel Corporation

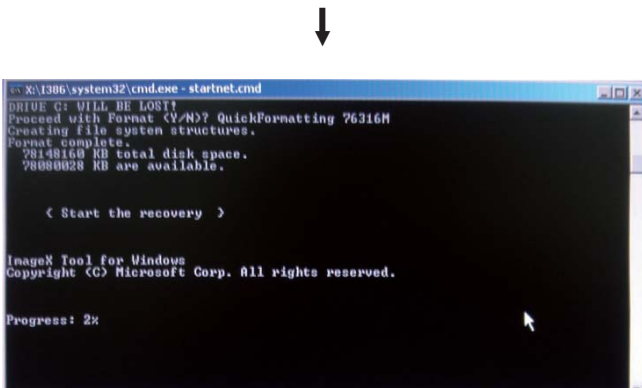
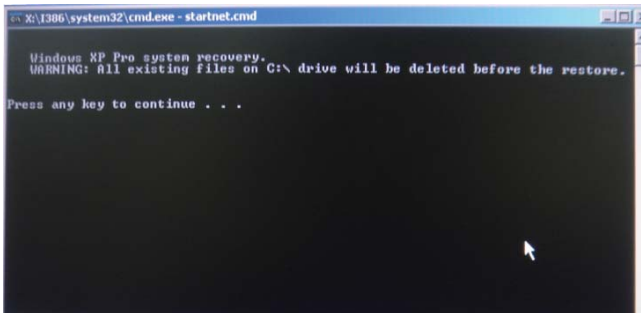
For Realtek RTL8111B/8111C Gigabit Ethernet Controller v2.13 (071227)
PXE-E01: Media test failure, check cable
PXE-M0F: Exiting PXE ROM.
Boot from CD :

Press any key to boot from CD...
```

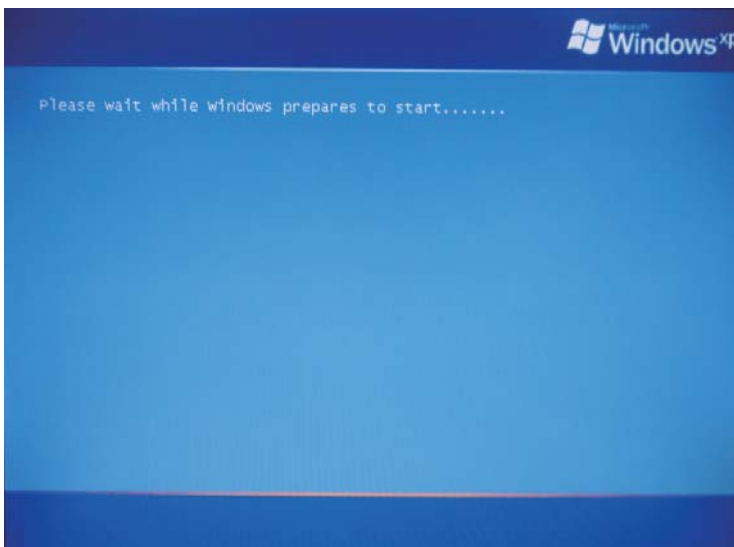
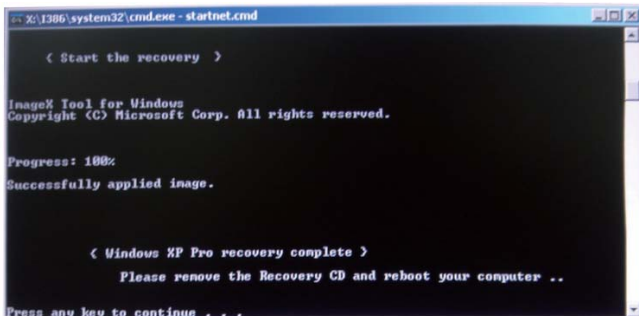




**Step 4.** Press any key to continue



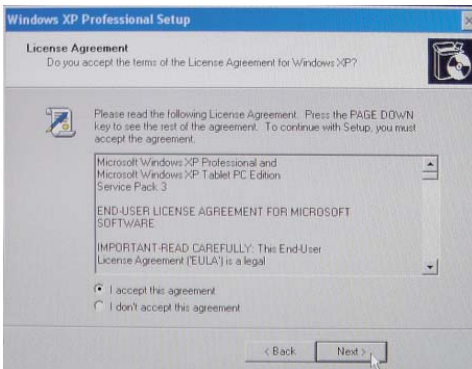
**Step 5.** Press any key to continue



## Step 6. Press "Next"

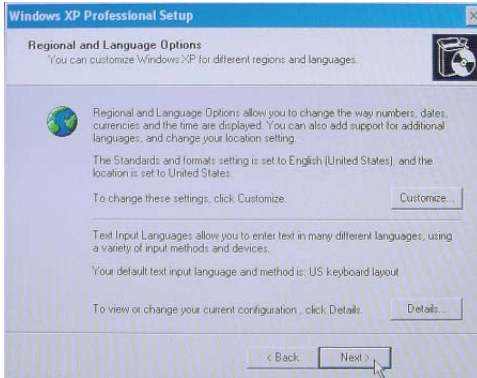


## Step 7. Read agreement and press "I accept this agreement" and "Next".

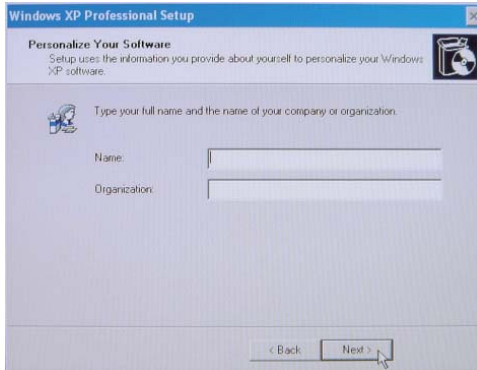




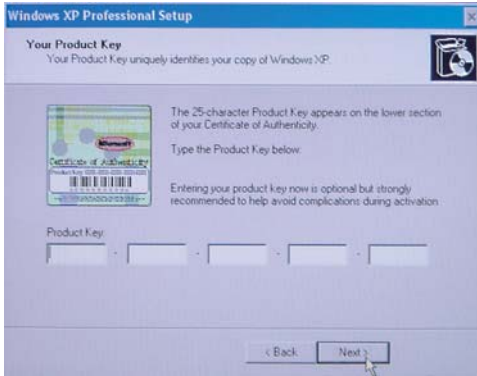
## Step 8. Press "Next"



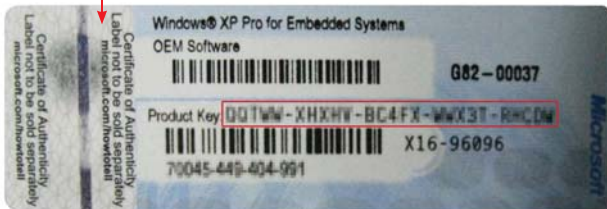
## Step 9. Type your full name, organization and press "Next"



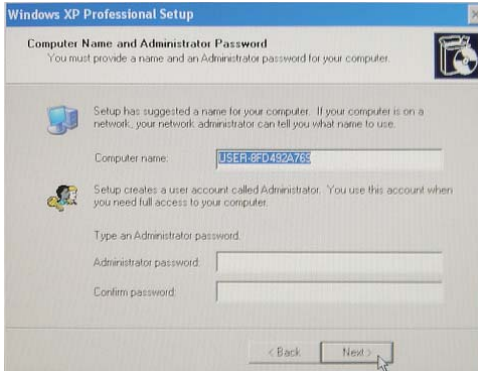
**Step 10.** Type product key and press "Next"



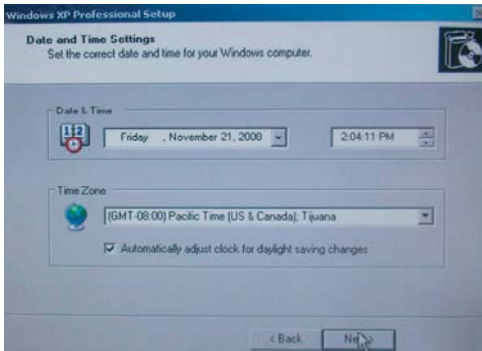
Please find the "Certificate of Authenticity" license label on the back-cover.



**Step 11.** Setup your computer name, administrator password and press "Next"



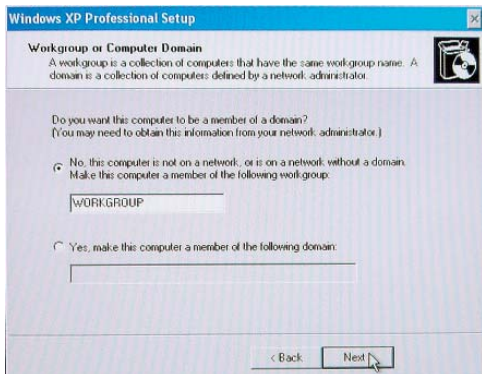
**Step 12.** Setup your computer date and time and press "Next"



**Step 13.** Choose typical or custom setting and press "Next"



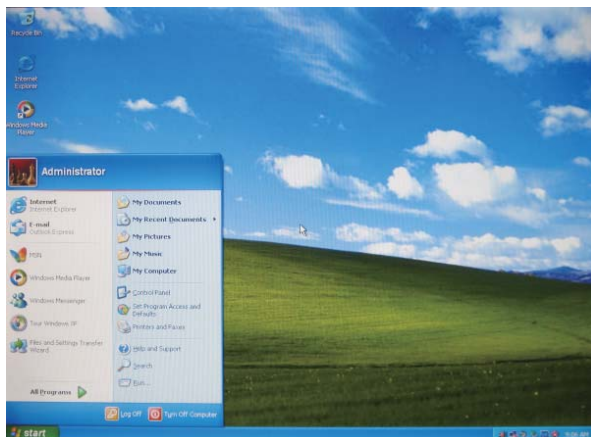
## Step 14. Choose applicable option



## Step 15. Press "Finish"



## Step 16. Finish and launch windows system



## 2. PA1575R Touchscreen Driver Install Instructions:

The touch driver is located on the enclosed CD-ROM for these operating systems:  
Windows® XP

**Step 1.** Insert the included Touchscreen disk into an external DVD-ROM (sold separately)

**Step 2.** Select the monitor size 15" and then model name PA1575R.

**Step 3.** Click on the "Load Driver" button that appears to the right of the model name.

**Step 4.** Follow the step-by-step instructions as shown on the pop-up windows.

# Environmental Specifications

## Temperature Ranges

<b>Operating Temperature (Independent of altitude)</b>	0°C to 35°C
<b>Non-Operating Temperature (Independent of altitude)</b>	-20°C to 60°C

## Humidity

<b>Operating (non-condensing)</b>	20% to 80%
<b>Non-Operating (38.7°C maximum wet bulb temperature)</b>	10% to 90%

## Altitude Ranges

<b>Operating</b>	0 to + 12,000 feet [3,658m]. Equivalent to 14.7 to 10.1 psia.
<b>Non-Operating</b>	0 to + 40,000 feet [12,192m]. Equivalent to 14.7 to 4.4 psia.

# Touch Computer Specifications

<b>Processor</b>	Intel ATOM processor N270 w/533MHz FSB
<b>RAM</b>	2GB DDR2 RAM
<b>Northbridge</b>	Intel 945GSE
<b>Southbridge</b>	Intel ICH7-M
<b>Video</b>	Intel GMA 950
<b>Operating systems</b>	Microsoft Windows XP Professional Embedded
<b>Ports</b>	7 x USB 2.0 ports (Ext. x 3, Int x 4) 1 x 10/100 BaseT and Gigabit LAN 2 x Serial ports (DB9) COM1, COM2 1 x line-out 3.5mm 1 x DVI-D 12V Power Jack
<b>BIOS</b>	Intel BIOS Support ACPI SMBIOS
<b>Real Time clock</b>	Replaceable lithium-ion battery for clock <b>Caution:</b> Risk of Explosion if Battery is replaced by an Incorrect Type. Dispose of Used Batteries According to the Instructions.
<b>Storage</b>	<b>XP:</b> SATA 2.5" HDD 160GB (or above)
<b>Power supply</b>	<b>Type:</b> External brick Input (line) voltage: 100-240 VAC, 50-60 Hz Output voltage/current: 12 V at 4.16 amps
<b>Temperature</b>	<b>Operating:</b> 0°C to 35°C <b>Storage:</b> -20°C to 60°C
<b>Humidity Operating:</b>	<b>Operating:</b> 20%-80% <b>Storage:</b> 10%-90% noncondensing
<b>Weight</b>	Actual: 17.2 lb (6.0 kg) Shipping: 22.5 lb (8.93 kg) Shipping box dimensions 465 x 375x 288
<b>Backlight lamp life</b>	Min 40,000 hours to half brightness
<b>Agency approvals</b>	UL/cUL, FCC, CE, TUV, EN60950
<b>Speakers (internal)</b>	1W speakers
<b>Mounting options</b>	75 mm VESA mount

## Display Specifications

<b>Model</b>	<b>PA1575RXP</b>
<b>LCD Display</b>	15" TFT Active Matrix Panel
<b>Display Size</b>	304.1(H) x 228.1(V) mm
<b>Pixel Pitch</b>	0.297(H) x 0.297(V) mm
<b>Native</b>	XGA 1024 x 768
<b>Display Color</b>	16.2 million color
<b>Plug &amp; Play</b>	DDC 2B

## Power Supply Specifications

The touch computer shall be powered by 12VDC from a universal type power supply brick with the following characteristics:

<b>Input voltage</b>	100 to 240 V~
<b>Input frequency</b>	50/60 Hz
<b>Output voltage</b>	12 V
<b>Output line and load regulation</b>	+/- 5%
<b>Output current</b>	4.1 Amps Rated



<b>Other features</b>	Removable base
	Fanless
	Touchscreen sealed to bezel and LCD
	Security lock receptacle

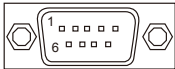
**Peripheral Options and Upgrades**    May vary

**Battery Notice Caution:**

**Risk of explosion if battery is replaced by an incorrect type.**

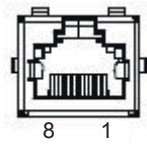
**Dispose of used batteries according to the instructions.**

**COM1, COM2, Connector(RS232 Mode)**



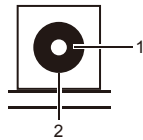
Pin #	Signal Name
shell	Ground
1	DCD
2	RXD
3	TXD
4	DTR
5	signal ground
6	DSR
7	RTS
8	CTS
9	RI

## RJ45 LAN connector Pin Definition



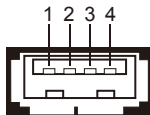
Pin #	Signal Name
1	TD+
2	TD-
3	RD+
6	RD-

## Power Input Pin Definition



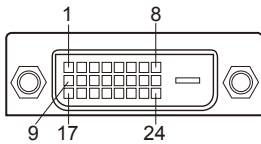
Pin #	Signal Name
1	+12V
2	Ground

## USB Pin Definition



Pin #	Signal Name
1	+5V
2	USB D-
3	USB D+
4	GND

## DVI-D Pin Definition



Pin #	Signal Name
1	DATA 2-
2	DATA 2+
3	Shield 2/4
4	DATA 4-
5	DATA 4+
6	DDC CLOCK
7	DDC DATA
8	VSYNC
9	DATA 1-
10	DATA 1+
11	SHIELD 1/3
12	DATA 3-
13	DATA 3+
14	DDC POWER
15	A GROUND 1
16	HOT POWER
17	DATA 0-
18	DATA 0+
19	SHIELD 0/5
20	DATA 5-
21	DATA 5+
22	SHIELD CLK
23	CLOCK -
24	CLOCK +

# Appendix

## Troubleshooting

If you are experiencing trouble with the LCD display, refer to the following. If the problem persists, please contact your local dealer or our service center.

***Problem: No image appears on screen.***

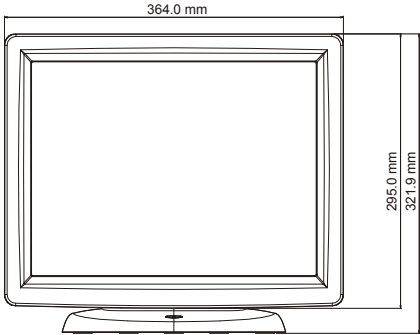
- ▶ Check that all the I/O and power connectors are correctly and well connected described in the "Installation" section.
- ▶ Make sure the pins of the connectors are not crooked or broken.

***Problem: Partial Image or incorrectly displayed image.***

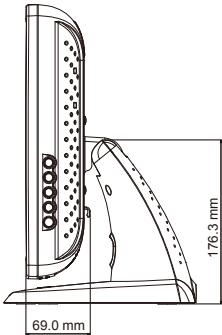
- ▶ Check to see if the resolution of your computer is higher than that of the LCD display.
- ▶ Reconfigure the resolution of your computer to make it less than or equal to 1024 x 768.

# Product Dimensions

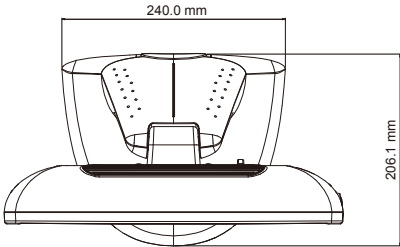
▶ Front View



▶ Side View



▶ Top View



## Compatibility Modes

Mode	Resolution	H-Frequency (KHz)	V-Frequency (Hz)
VGA	720 x 400	31.47	70
VGA	640 x 480	31.47	60
VESA	800 x 600	37.88	60
VESA	1024 x 768	48.36	60

# Product Registration and Technical Support

## Register Your Planar Products Today

Thank you for choosing Planar. To assure you receive all the benefits of your Planar product and services, register your Planar product today. Visit our website to register your product at [http://www.planar.com/support/product\\_registration.html](http://www.planar.com/support/product_registration.html).

## Cables, Replacement Lamps, Accessories

To find cables, replacement lamps and accessories for your Planar projector, LCD monitor, touch screen or other Planar products visit our online store at [www.PlanarOnline.com](http://www.PlanarOnline.com) or find other stores who carry Planar products at <http://www.planar.com/howtobuy>.

## Technical Support

Visit Planar at <http://www.planar.com/support> for product registration, operations manuals, touch screen drivers, warranty information and access to Planar's Technical Library for online troubleshooting.

To speak with Planar Customer Support please have you model and serial number available and dial:

### Planar Support

Tel: 1-866-PLANAR1 (866-752-6271) or +1 503-748-5799 outside the US.

Hours: 24 hours a day, 7 days a week.

**Toll or long distance charges may apply.**

**Planar Systems, Inc.**

Customer Service

24x7 Online Technical Support: <http://www.planar.com/support>

1195 NW Compton Drive

Beaverton, OR 97006-1992

**Tel:** 1-866-PLANAR1 (866-752-6271) or +1 503-748-5799 outside the United States.

**Hours:** 24 hours a day, 7 days a week

© 2011 **Planar Systems, Inc. 5/11** Planar is a registered trademark of Planar Systems, Inc.

Other brands and names are the property of their respective owners.

Technical information in this document is subject to change without notice.

020-1025-00D  
820450085101



## Free Manuals Download Website

<http://myh66.com>

<http://usermanuals.us>

<http://www.somanuals.com>

<http://www.4manuals.cc>

<http://www.manual-lib.com>

<http://www.404manual.com>

<http://www.luxmanual.com>

<http://aubethermostatmanual.com>

Golf course search by state

<http://golfingnear.com>

Email search by domain

<http://emailbydomain.com>

Auto manuals search

<http://auto.somanuals.com>

TV manuals search

<http://tv.somanuals.com>