



2-Bay SATA NAS RAID Server

NAS-7200

User's Manual

Version: 1.00

Date: July. 2008

Copyright

Copyright © 2008 by PLANET Technology Corp. All rights reserved. No part of this publication may be reproduced, transmitted, transcribed, stored in a retrieval system, or translated into any language or computer language, in any form or by any means, electronic, mechanical, magnetic, optical, chemical, manual or otherwise, without the prior written permission of PLANET.

PLANET makes no representations or warranties, either expressed or implied, with respect to the contents hereof and specifically disclaims any warranties, merchantability or fitness for any particular purpose. Any software described in this manual is sold or licensed "as is". Should the programs prove defective following their purchase, the buyer (and not PLANET, its distributor, or its dealer) assumes the entire cost of all necessary servicing, repair, and any incidental or consequential damages resulting from any defect in the software. Further, PLANET reserves the right to revise this publication and to make changes from time to time in the contents hereof without obligation to notify any person of such revision or changes.

All brand and product names mentioned in this manual are trademarks and/or registered trademarks of their respective holders.

Federal Communication Commission Interference Statement

This equipment has been tested and found to comply with the limits for a Class B digital device, pursuant to Part 15 of FCC Rules. These limits are designed to provide reasonable protection against harmful interference in a residential installation. This equipment generates, uses, and can radiate radio frequency energy and, if not installed and used in accordance with the instructions, may cause harmful interference to radio communications. However, there is no guarantee that interference will not occur in a particular installation. If this equipment does cause harmful interference to radio or television reception, which can be determined by turning the equipment off and on, the user is encouraged to try to correct the interference by one or more of the following measures:

1. Reorient or relocate the receiving antenna.
2. Increase the separation between the equipment and receiver.
3. Connect the equipment into an outlet on a circuit different from that to which the receiver is connected.
4. Consult the dealer or an experienced radio technician for help.

FCC Caution

To assure continued compliance. (example-use only shielded interface cables when connecting to computer or peripheral devices). Any changes or modifications not expressly approved by the party responsible for compliance could void the user's authority to operate the equipment.

This device complies with Part 15 of the FCC Rules. Operation is subject to the Following two conditions: (1) This device may not cause harmful interference, and (2) this Device must accept any interference received, including interference that may cause undesired operation.

Federal Communication Commission (FCC) Radiation Exposure Statement

This equipment complies with FCC radiation exposure set forth for an uncontrolled environment. In order to avoid the possibility of exceeding the FCC radio frequency exposure limits, human proximity to the antenna shall not be less than 20 cm (8 inches) during normal operation.

Safety

This equipment is designed with the utmost care for the safety of those who install and

use it. However, special attention must be paid to the dangers of electric shock and static electricity when working with electrical equipment. All guidelines of this and of the computer manufacture must therefore be allowed at all times to ensure the safe use of the equipment.

CE Mark Warning

This is a Class B product. In a domestic environment, this product may cause radio interference, in which case the user may be required to take adequate measures.

WEEE Regulation



To avoid the potential effects on the environment and human health as a result of the presence of hazardous substances in electrical and electronic equipment, end users of electrical and electronic equipment should understand the meaning of the crossed-out wheeled bin symbol. Do not dispose of WEEE as unsorted municipal waste and have to collect such WEEE separately.

Revision

User's Manual for PLANET 2-Bay SATA NAS RAID Server
Model: NAS-7200
Rev: 2.0 (July. 2008)
Part No. EM-NAS7200

Table of Content

1.	Introduction.....	4
1.1	Overview	4
1.2	Features	4
1.3	Package Contents	5
2.	Basic Installation & Setup	6
2.1	Front Panel	6
2.2	Rear Panel.....	8
2.3	HDD Install.....	9
2.4	HDD Remote	10
2.5	Hardware Installation	11
2.6	USB Devices	11
2.7	Configuration NAS.....	13
3.	Basic Installation & Setup	16
3.1	Network Logon (Windows 95/98/ME only)	16
3.2	Using the NAS Server's Storage	17
3.3	Using the NAS Server's Printer	20
3.4	Using the Web File Sharing	21
3.5	Changing Your Password	22
4.	Web-based Management.....	23
4.1	Introduction	23
4.2	The Web-based Administrator Interface	23
4.3	Setup Menu - User Screen.....	24
4.4	Setup Menu - Status Screen.....	28
4.5	Setup Menu - Network Screen	31
4.6	Setup Menu - System Screen.....	34
4.7	Setup Menu - Media Screen	41
4.8	Advanced Menu – Groups Screen	43
4.9	Advanced Menu – Shares Screen	46
4.10	Advanced Menu – Backup Screen	50
4.11	Advanced Menu – Disk Screen	54
4.12	Advanced Menu – Upgrade Screen	59
5.	Download Manager.....	60
5.1	The Web-base Download Management Interface.....	60
5.2	Download Management Screen.....	61
5.3	Add New Task Screen.....	63
6.	Download Manager.....	65
6.1	Making the NAS available via the Internet.....	65
6.2	Using Web Browser from the Internet.....	66
6.3	Printing via IPP (Internet Printing Protocol).....	67
6.4	Remote Management	70
	Appendix A: Licenses	71

1. Introduction

Thank you for purchasing PLANET SATA NAS Server, NAS-7200. In this installation guide, it illustrates the simply installation for user to install a HDD and install NAS-7200 to Windows system.

1.1 Overview

This user's manual explains how to operate the NAS-7200 from a computer. Basically, the user's manual is written to be read on the computer display. However, users might consider printing it out to access easily and read it before you operate the NAS-7200. This manual shows how to set up the NAS-7200.

1.2 Features

- The administrator can limit the amount of available disk space available to individual users
- Supports RAID O/1 and JBOD
- Supports 10/100/1000Base-TX, Auto-MDI / MDIX network interface
- With a high-performance internal cooling fan for continuous operation
- 2 Standard USB 2.0 port for external USB HDD and print server sharing
- Supports Windows utility and web base manage internet
- Supports UPnP-AV, sharing music, pictures, movies and data over network (DLNA1.5)
- DHCP Server/Client, FTP server
- UPnP recover
- PHP Support for web station
- Supports NTFS (Read only) and FAT file format for USB HDD
- Download function (BT, FTP and HTTP)
- Powerful backup function from / to another server
- Windows Vista LLTD, PnP-X
- Media Server function - iTunes, MP3 broadcast
- High performance file system automatically maintains itself to provide integrity
- Supports most popular OS including Windows Vista/XP/2000/2003, Mac OS 10.2.1 or above, Linux
- User friendly mapping utility helps user to share folder as a network device

1.3 Package Contents

User can find the following items in the package:

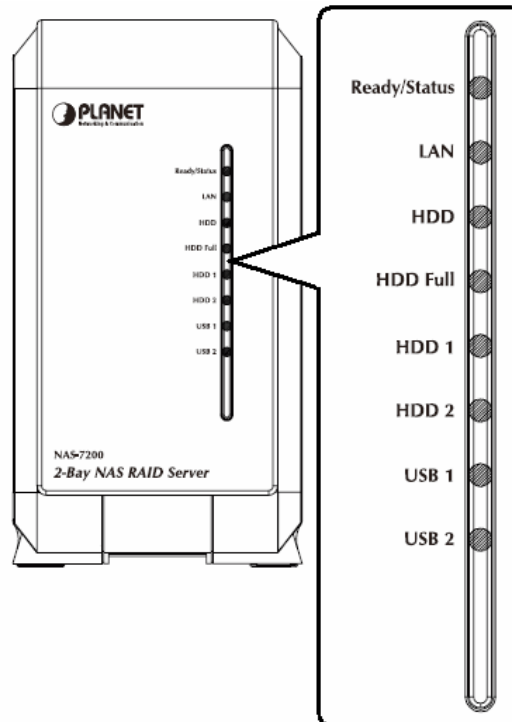
- NAS-7200
- Quick Installation Guide
- Setup CD
- Ethernet Cable
- Power Adapter with Power Core
- EMI core

- NOTE:**
1. If any of the above items are missing, please contact your dealer immediately.
 2. Using the power supply that is not the one included in NAS packet will cause damage and void the warranty for this product.

2. Basic Installation & Setup

This chapter provides details of installing and configuring the NAS.

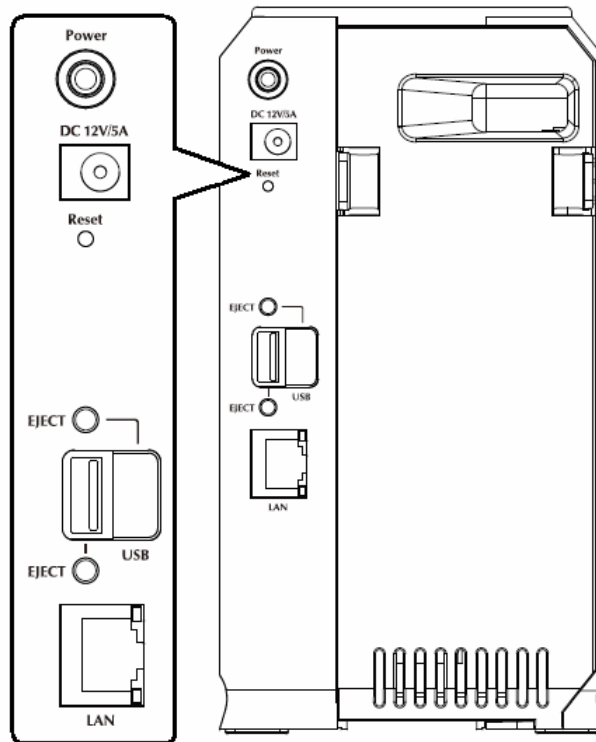
2.1 Front Panel



Ready/Status	<p>Ready (Green)</p> <p>ON – Normal operation.</p> <p>OFF – No power.</p> <p>Blinking – This LED blinking during startup and shutdown.</p> <p>Status (Amber)</p> <p>ON – This LED will be On during the Startup self-test; it will turn Off once the self-test is completed. If it stays ON, there is a hardware error.</p> <p>OFF – Normal operation.</p> <p>Blinking – During a software upgrade, both the Status and Ready LEDs will blink.</p>
LAN	<p>ON – Link established.</p> <p>OFF – No LAN connection.</p> <p>Blinking – Data is transmitted or received via the LAN.</p>
HDD	<p>OFF – Idle.</p> <p>Blinking – Hard disk is being accessed.</p>

HDD Full	<p>ON - Disk is completely full. No more data can be stored on this disk</p> <p>OFF -Normal operation, disk is not full.</p> <p>Blinking - Disk is 98% full (The Buzzer will also beep 3 times.)</p>
HDD 1	<p>ON – Disk 1 installed</p> <p>OFF – Disk 1 not installed</p> <p>Blinking – HDD 1 is accessing.</p> <p>Blinking – Raid 1 Rebuilding (HDD2 LED will also blinking)</p>
HDD 2	<p>ON – Disk 2 installed</p> <p>OFF – Disk 2 not installed</p> <p>Blinking – HDD 2 is accessing.</p> <p>Blinking – Raid 1 Rebuilding (HDD1 LED will also blinking)</p>
USB 1	<p>ON - USB device connected to the USB port</p> <p>OFF - No USB device installed</p> <p>Fast Blinking - Data being transferred to or from the USB device</p>
USB 2	<p>ON - USB device connected to the USB port</p> <p>OFF - No USB device installed</p> <p>Fast Blinking - Data being transferred to or from the USB device</p>

2.2 Rear Panel



Power Switch	This is a spring-loaded "Soft Switch". If power is Off, press once to turn On. If power is On, press once to start the Shutdown sequence. During Shutdown, the Ready LED will blink. When Shutdown is completed, all LEDs will turn off.
Power Input	Connect the supplied power adapter here.
Reset Button	Press and hold this button for 10 seconds. The IP Address, user name and password will be set to the default and it will beep once to indicate the reset has occurred
USB Eject Button 1/2	For USB port 1/2 device eject. Press and release to prepare the USB device for removal. When the USB LED turns off, it is safe to remove the USB device.
USB Port 1 & 2 (Up/Down)	Connect your USB Hard Disk Drive or USB Flash Drive here. The USB HDD support FAT and NTFS (Read only) file format Connect USB printer
LAN	Use this to connect the NAS to your 10/100/1000BaseT hub.

2.3 HDD Install

The NAS-7200 supports two 3.5-inch Serial-ATA (SATA) hard drives. NAS-7200 does not support low profile or half high hard drive.

1. Make sure the NAS-7200 is powered off
2. Open rear cover of NAS-7200



3. Make sure your hard drive is SATA interface and make sure you back up all pre-existing data before use it on NAS-7200
4. To install Disk 1 that located on left side (rear view), make sure HDD top face to left and connector side in front then slide the HDD into slot



5. To install Disk 2 that located on right side (rear view), make sure HDD top face to right and connector side in front then slide the HDD into slot



6. Put the rear cover of NAS-7200 back to finish HDD install



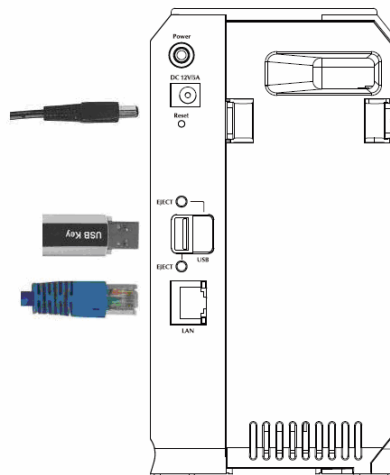
7. Secure the 2 HDDs by mounting 4 screws as figure below.



2.4 HDD Remove

1. Make sure the NAS-7200 is powered off with DC-plug removed
2. Remove the screws that fix the HDD you want to remove
3. Open the rear cover of NAS-7200
4. Pull out the HDD till HDD connector release then the HDD can slide out of slot.

2.5 Hardware Installation



1. Connect the network cable to the NAS.
2. Connect the network cable to the LAN port on the rear of the NAS. Connect the other end to your hub or switch.
3. Connect the USB device to USB port
4. Connect the supplied power adapter to a power outlet and plug the power cord into the NAS's Power input on the rear panel.
5. Power on.
6. Locate the NAS's power switch on the NAS's rear panel. Press it once to power on the NAS.
7. The NAS's self-test.
8. The NAS will run a brief self-test (2 or 3 seconds). During the self-test, all of the NAS's LEDs will be illuminated or flashing.
9. Booting up.
10. When the self-test is complete, boot up will start. The Ready LED will blink continuously, and the LAN LED will blink occasionally. Boot up should take approximately 1-3 minutes.
11. Boot up completed.
12. When the Ready LED stops blinking, and remains on, boot up is complete. If the Status (Orange) LED stays on, or if the NAS repeatedly beeps, there is a hardware problem. Consult the Troubleshooting section of this User Guide for possible solutions

Shutdown

To shutdown the NAS, press the power switch to start the shutdown procedure. Wait for all LEDs turn off.

2.6 USB Devices

You can insert either USB HDD or USB Memory Disk (Flash Memory Disk) to USB port at any time. Once the "USB 1" or "USB 2" LED on the front panel comes on and stays on, the USB device is available for use.

For USB HDD, the NAS can recognize FAT and NTFS (Read only) file format.

Removing a USB device - Method A

1. Press the USB Eject button on the rear panel (Eject 1 for USB 1, Eject 2 for USB 2). The NAS will beep.
2. Wait for the "USB" LED turn off.

3. Remove the USB device.

Removing a USB device - Method B

1. Run the Windows utility
2. Select "Safely Remove Drive"
3. Select the desired NAS
4. Click the "Eject" button.
5. Wait for the "USB" LED turn off. (The Windows program will also display a message when it is safe to physically detach the USB device.)
6. Remove the USB device.

Note: If the USB device is not removed, it will not be re-connected. You must remove and re-insert the USB device to have it re-connected.

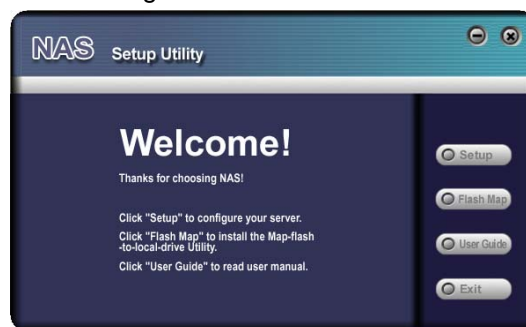
To share a printer, connect USB printer to this USB port.

2.7 Configuration NAS

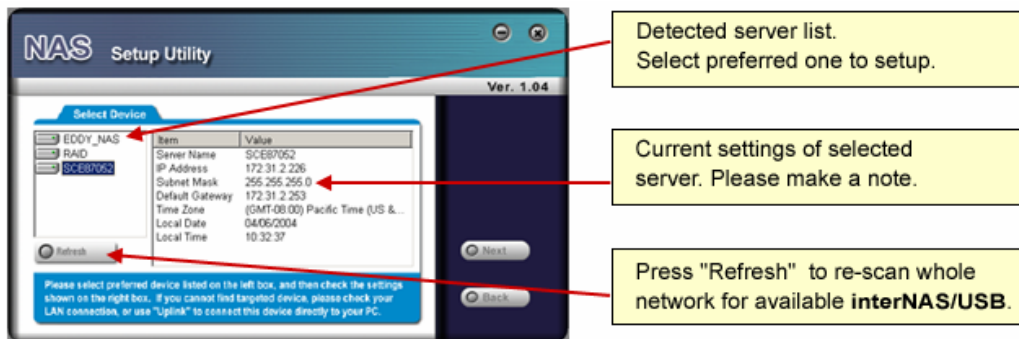
- This procedure only needs to be done ONCE, by the NAS's Administrator.
- Other LAN users should follow the advice given in ***using your NAS described*** in the following section.

Quick Setup with the NAS Wizard

1. Please insert User's Manual and Utility CD into the CD-ROM drive to initiate the autorun program. Once completed a menu screen will appear.
2. Click on "Initial Utility" hyper link to initiate the installation. If the autorun program is not process in your PC, you can click the "Start" button and choose "Run". (Suppose "E" is your CD-ROM drive). When the dialog box appears, enter "E:\Utility\Setup.exe" and press enter key. You will see the dialog box as below. Please click the "Setup" button.



3. After click, you will see the screen as below. The utility will auto search your network and find out your NAS.



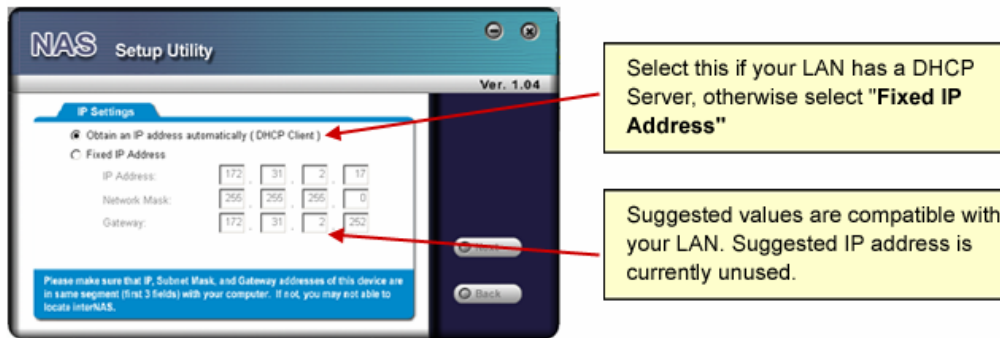
A list of all the NAS's on your network will show on the left side. The right side displays details of the currently selected NAS.

If the desired NAS is not listed, check the following:

- The NAS has finished the start up and boot process.
- Your PC and the NAS are on the same IP segment.
- Click "Refresh" button to search again.

Otherwise, select the desired NAS, and click the "Next" button.

4. The following screen will then be displayed. You can set the IP settings in this screen. Please click "Next" after the configured.



Obtain an IP address automatically (DHCP Client)

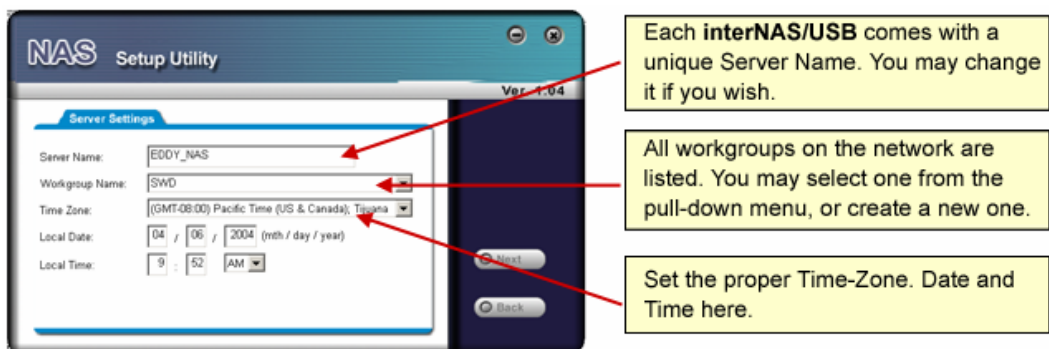
Select this only if your LAN has a DHCP Server.

Fixed IP Address

This option is recommended. You need to enter the following data.

- **IP address** - The utility will suggest a unused IP address within the address range used on your LAN. If you wish, you can change this, but you must ensure the address is unused.
- **Network Mask** - This must match the value used by PCs on your LAN.
- **Gateway** - This must match the value used by PCs on your LAN.

5. You can configure the time settings in this screen. Please click "Next" after the configured.



Server Name

The *Default Name* is shown. You may change this if you wish.

Workgroup Name

Normally, this name should match the *Workgroup* name used by PCs on your LAN.

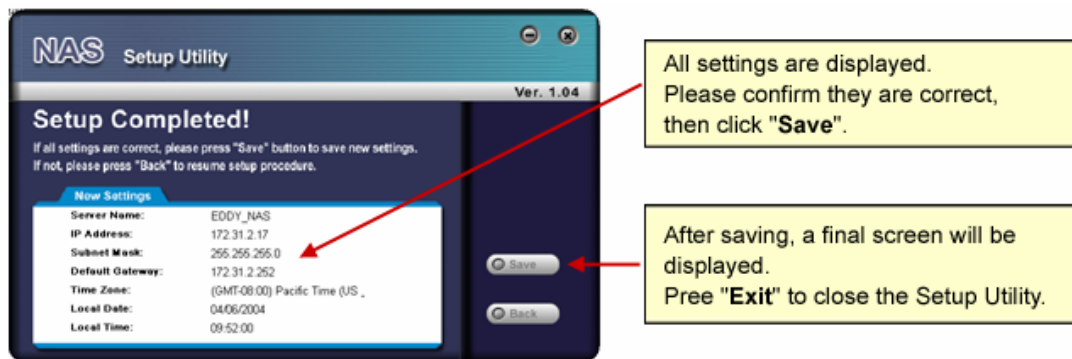
Time Zone

Select your time zone from the list.

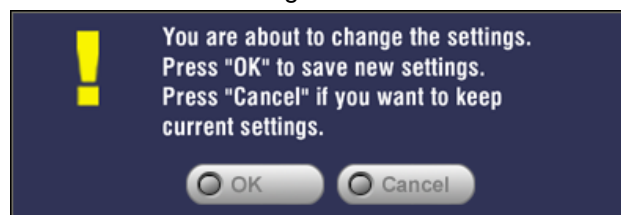
Local Date/Time

Enter the local date (mm/dd/yyyy format) and time.

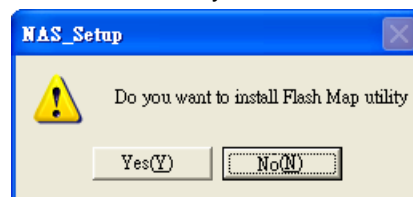
6. Please check the configured settings of this screen, if all the configure are correct. Please click "Save" button.



7. After click "Save", you will see the dialog box to prompt you again. Please click "OK" to save or click "Cancel" to check the settings.



8. If you would like to install "Flash-Map" to helps you to mapping NAS now, please click "Yes" and refer to the manual in our bundled CD disk, otherwise, please click "No" to finish the configuration, then close the initial utility.



3. Basic Installation & Setup

Supported versions of Windows are:

- Windows 95/98/ME or later
- Windows NT 4.0, Windows 2000, Windows 2003, Windows XP and Windows Vista

The following items need to be checked or configured:

- Network Logon (Windows 95/98/ME only)
- Locating the NAS on your LAN.
- Mapping to the NAS Server's storage.

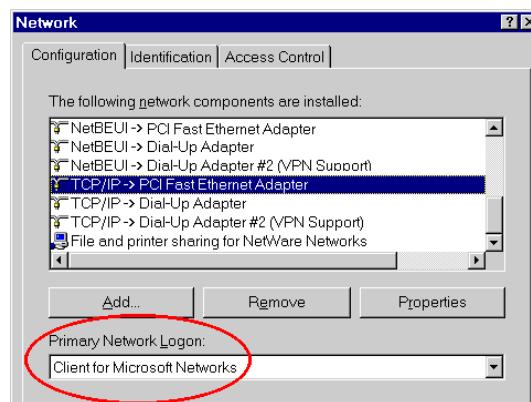
3.1 Network Logon (Windows 95/98/ME only)

If using Windows 95, Windows 98, or Windows ME, you must Logon to the Network correctly in order to use the NAS.

To check your Network Logon, following this procedure:

Check your Window logon using Start - Settings - Control Panel - Network.

Ensure the Primary Network Logon is set to "Client for Microsoft Networks", as shown below.



Windows will prompt you to Logon to the Network when it starts (boots).

You must logon!

If you press ESC, or click Cancel, no network resources will be available.

When you logon, you need to use a valid User Name and Password. If the NAS Administrator has defined users on the NAS, use the User Name and password they supply.

3.2 Using the NAS Server's Storage

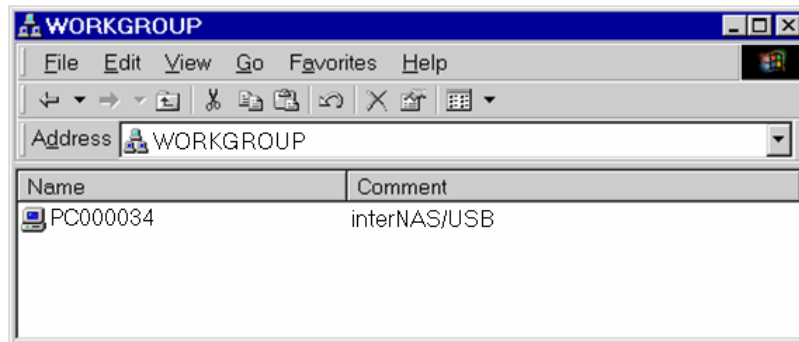
To use the NAS Server's storage, you should "Map" a drive letter to each folder on the NAS folder, which you wish to access. The "Network Drive" will then be available to all Windows programs. The procedure is as follows:

1. Open Network Neighborhood (or My Network Places).

On the "View" menu, select Details. The Comment column will now be visible.

2. Locate the NAS, as shown below.

If it is not listed, double-click Entire Network. Then double-click the Workgroup that the NAS is in. (By default, the NAS is in Workgroup.)

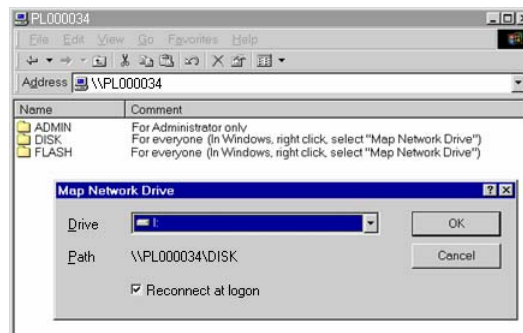


3. Double click on the NAS icon. You will then see a list of shares (shared folders). You can read and write files to these shares, unless the NAS administrator has blocked access.
4. To create a shortcut to an NAS folder, drag its icon to the desktop, and accept Windows offer to create a shortcut.

Mapping a Network Drive

You can give a share (shared folder) on the NAS a drive letter on your PC; such as "F:". This is called "mapping" the drive letter. To do this, follow this procedure:

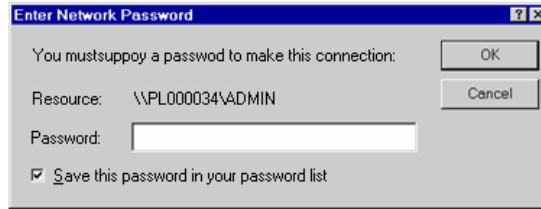
1. Right-click on the desired share on the NAS.
2. On the pop-up menu, select "Map Network Drive..."



3. Select a drive letter for this folder, check the Reconnect at Logon checkbox, then click "OK".

- This drive will now be available in Windows Explorer, and from the File- Open or File-Save As dialog in all Windows applications.

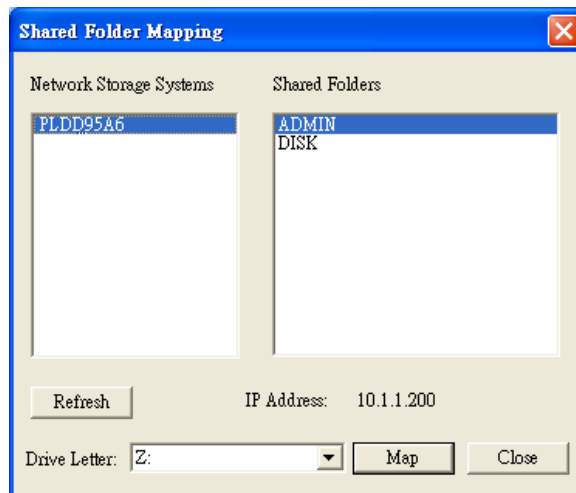
Note: If the USB device is not removed, it will not be re-connected. You must remove and re-insert the USB device to have it re-connected.
When you try to access a folder, you may be prompted for a password, as shown below:



- If your Windows logon name is the same as your user name on the NAS, but the passwords are different, you can enter your NAS password here.
- But if your Windows logon name does not exist on the NAS, you will have only guest access rights, and there is no password that you can enter in this dialog. You must ask the NAS administrator to create a username and password for you on the NAS.
- Even if your username and password are correct, you can't gain access if the NAS administrator has not allowed access.

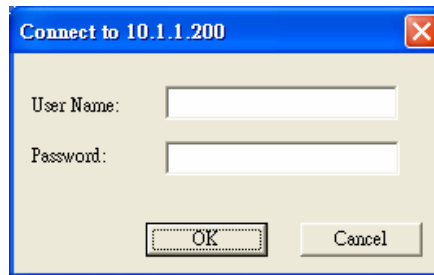
You can also use the Windows utility "Flash Map" installed from the bundle CD-ROM disk:


- Suppose the CD-ROM drive is disk "E" in your PC. You can find the Flash Map in "E:\utility\Flash Map". Please double click the "Setup.exe" and then follow the steps to install. After installed, the utility will autorun and search your NAS on the network.
- Select "Share Folder Mapping", and a screen like the following will be displayed.



- A list of all the NAS's on your network will show on the left side. The right side displays share folders of the currently selected NAS

4. Select which share folder you want to map and select a drive letter for this share folder then click "Map" button.



5. This drive will now be available in Windows Explorer, and from the File- Open or File-Save As dialog in all Windows applications.
6. If you would like to map to NAS-7100 again when you have finish some configuration. You can right click the Flash Map icon  on the system tray. Then select "Shared Folder Mapping" then follow the steps above to mapping the network disk.

Tips for Storing Data on the NAS

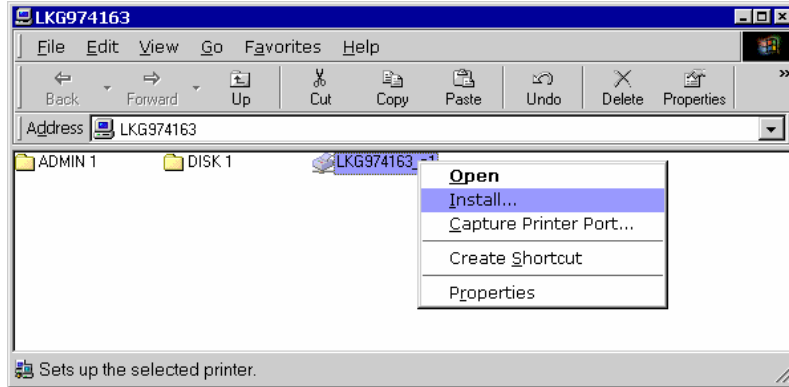
- Change your Windows logon so it matches the user name & password assigned to you on the NAS. This will allow you to login only once.
- You can "map" multiple folders to drive letters on your PC, as described above.
- You can backup your data to the NAS by copying files from your PC to the NAS.
- If you have Windows ME, 2000, XP or Vista, there is a backup program supplied with Windows. You can use this backup program to automate the process of backing up your data to the NAS. Please read the instructions and help file supplied with this program for details of correct usage.

3.3 Using the NAS Server's Printer

1. Find out what printer is connected to the printer port on the NAS.

Use Network Neighborhood (or My Network Places) to locate the NAS, as shown in Network Browse earlier.

2. Double-click the NAS icon. A printer icon should be shown.



3. Right-click the printer icon, and select Install, as shown above. The Add Printer wizard will start.
4. Select the Manufacturer and Printer matching the printer connected to the NAS.
5. Follow the prompts to complete the installation.
If prompted about sharing this printer, do NOT enable sharing.
6. The new printer will then appear in your Printer list, and can be used from any Windows application.
 - Use Start - Settings - Printers to list all your printers.
 - Double-click the printer to view or delete the documents in the print queue.
 - Use File - Set as Default to make the selected printer the default printer.
 - Use File - Properties to view or modify the properties of the selected printer.

Note	Please make sure the printer is not a GDI interface printer before you connect to NAS-7200. The print server function is support PCL interface printer only. You may confirm the interface to your printer provider for the detail information.
-------------	---

3.4 Using the Web File Sharing

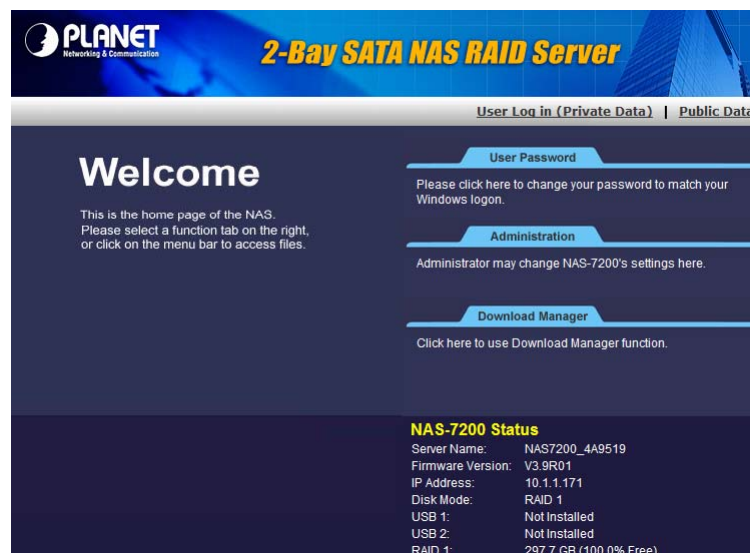
You can access and download files on the NAS using your Web Browser, even from non-Windows platforms.

To access data stored on the NAS using your Web Browser:

1. Start your WEB browser.
2. In the Address box, enter "HTTP://" and the NAS Server's IP Address.

Note: If the port number used by the NAS has been changed (on the System screen) from the default (80), you must specify the correct port number when you connect.
For example, if the current port is 8080:
HTTP://192.168.0.100:8080

3. The following screen will be displayed.



4. To browse the files and folders on the NAS, click Public Data on the home screen above.
 - Shares (Folders) to which everyone has access are listed. You can access these folders, and files by clicking on the folder name or filename.
 - If your Browser displays the file when you prefer it to be downloaded, right-click on the file and choose "Save Target as..."
5. To access data which is password-protected; click the User Login (Private Data) link.
 - You will then be prompted for your user name and password.
 - Enter the user name and password assigned to you by the Administrator of the NAS.
 - The screen will then update, and list all Shares (folders) to which you have access.
 - You can now navigate through these folders by clicking on the folder name, and download any file by right clicking in and choosing "Save Target as ...".

3.5 Changing Your Password

Although the Administrator of the NAS must create your User Name and initial password, you can then change your own password whenever you wish, as follows:

To change your password, click on the "Change Password" link on home page. The following screen will be displayed.



The screenshot shows a web interface for a Planet Network NAS server. At the top, there is a blue banner with the Planet logo and the text "2-Bay SATA NAS RAID Server". Below the banner, there are two links: "Home" and "User Password". The main content area contains a paragraph of text explaining the purpose of the page: "This page allows user to change her/his password to match Windows Logon password. If your NAS-7200 has same User Name and Password as Windows, then you may access the NAS-7200 through Network Neighborhood directly." Below this text are four input fields labeled "User Name:", "Existing Password:", "New Password:", and "Confirm New Password:". At the bottom of the page, there is a dark blue bar with three buttons: "Save", "Cancel", and "Help".

Enter the required data:

- **User name** - your login name on the NAS, created by the NAS Server's administrator.
- **Existing password** - your current password
- **New password** - the password you now wish to use.
- **Confirm new password** - reenter the new value to ensure it is correct.

Click "Save" to save your changes.

Click "Home" to return to the main screen

4. Web-based Management

This chapter provides setup details of the NAS's Web-based Interface.

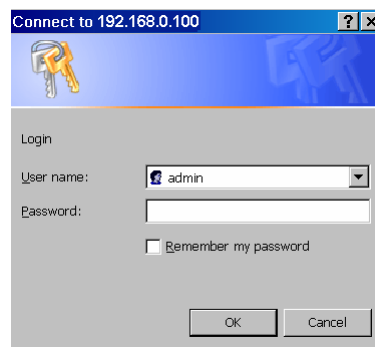
4.1 Introduction

This Chapter describes using the Web-based Administration interface.

For details on using the Windows utility, see the Basic Installation & Setup Chapter.

4.2 The Web-based Administrator Interface

To access the Administration interface, click the "Administration" link on the home page. You will then be prompted for a password, as shown below.



Enter "admin" for the name, and leave the password blank.

- To gain access, you must enter the User Name and Password of a user in the "Administrators" User Group.
- By default, the only user in the "Administrators" User Group is "admin". (You can add other users as you wish.)
- The default password for the "admin" user is blank (no password). This should be changed. Click the User Password link on the Home Page to change the password.

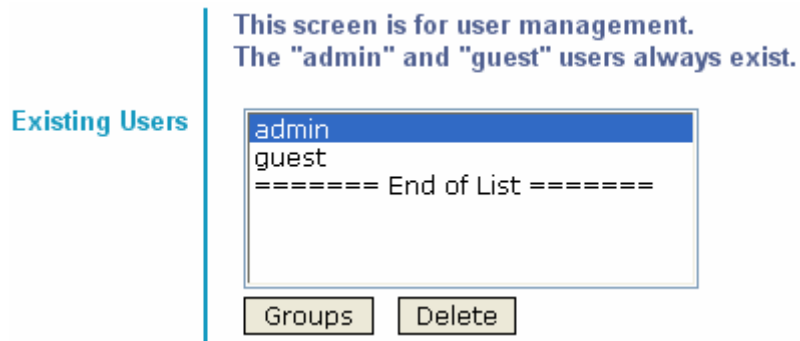
The "Users" screen will be displayed, as described in the following section. Use the menu tabs to select the other screens as desired.

4.3 Setup Menu - User Screen

Start-up screen will be as follow no matter an ordinary users or an administrator.

This is the first screen that appears after selecting "Administration". This screen allows you to manage the Users, which exist on the NAS Server.

- The "guest," and "admin" users are pre-defined, and cannot be deleted.
- Users can be members of many user Groups.



User List	This list shows all existing users. As you scroll through the list of users, details of the selected user are displayed in the "Properties" area.
Groups Button	Click this to view and/or modify the Groups which the selected user is in.
Delete Button	Use this to delete the selected user. When deleting a user, you have the option of deleting the Group and Share with the same name as the user (if they exist).

Properties

Name:

Comment:

Password:

Verify Password:

Create Private Folder (Share)

Share Location:

Enable Disk Quota of MB

Name	User Name. Note that punctuation and other special characters (e.g. * / \) cannot be used in the name.
Comment (Optional)	Enter a comment if you wish.
Password Verify password	<p>Enter the user's password in these fields. These fields are also used to change an existing user's password, as follows:</p> <ol style="list-style-type: none"> 1. Select the desired user 2. Clear the existing values in the password fields. 3. Enter the desired password in both the "Password" and "Verify Password" fields. If no password is required, leave both fields blank. 4. Click the "Update" button. <p>When creating a new user, enter the desired password in both of these fields.</p>
Create Private Folder (Share)	<p>If creating a new user:</p> <ul style="list-style-type: none"> ● Checking this option will create a Group and a Private Folder (Share) with the same name as the user. ● Read/Write access will be granted to the Share. <p>If changing an existing user:</p> <ul style="list-style-type: none"> ● The checkbox has no effect - it will neither create nor delete. This option is only available when creating a new user.
Enable Disk Quota	<p>Enable the checkbox if you want to set the disk usage for the user, and then enter the maximum amount of disk space this user is allowed to use. Note! Unless the checkbox is checked, the Disk Quota field has no effect.</p>

Buttons

Groups	Clicking this button will display the Groups of which the selected user is a member. You can then add this user to other Groups, or remove existing membership.
Delete	Click this button to delete the selected user.
Clear	Use this button to clear the form, preparing the form for the entry of a new user.
Save as New User	Use this Button to create a new user, after entering their data in the "User Properties" fields.
Save	Use this Button to save any changes you have made to the "User Properties" for an existing user.

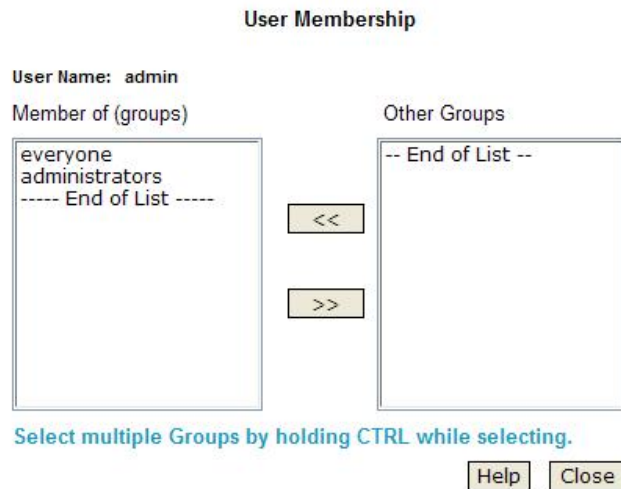
Modifying an existing user

To modify the properties for an existing User.

- Select the desired user from the list. Their details will be displayed in the "User Properties" fields.
- Edit the "User Properties" fields as required. Note that you cannot change the "Create Private Folder (Share)" option when modifying a user.
- Click the "Save" button to save your changes.

Group button

To click Group button, it will pop up following screen:



This screen allows you to check which Groups this user is a member of, and to add or revoke membership.

User Name	The name of the User being modified is shown at the top of the screen.
Member of	The "Member of:" column on the left shows the Groups that this user is in.
Other Groups	The "Other Groups" column on the right shows all other Groups. The current User is not a member of these Groups.

Operation

To Add Membership of a Group	Select the Group or Groups in the right-hand column, then click the "<<" Button. Multiple Groups can be selected by holding down the CTRL Key while selecting.
To Revoke Membership of a Group	Select the Group or Groups in the left-hand column, then click the ">>" Button. Multiple Groups can be selected by holding down the CTRL Key while selecting.
When finished, click the "Close" Button.	

4.4 Setup Menu - Status Screen

This screen used to check the details and status of NAS

System

Check the details and status of your NAS-7200.

Server Name: NAS7200_4A9519
(Default: NAS7200_4A9519)

Firmware Version: V3.9R01

Hardware Address: 00:C0:02:4A:95:19

IP Address: 10.1.1.171

Date: 1999/12/02

Time: 04:55 am

Current Status: Ready

Shutdown:

Restart:

System	<ul style="list-style-type: none"> ● Server Name - Current name of the NAS. This name will be shown in "Network Neighborhood" or "My Network Places". The NAS has one default server name. Server Name is restored to default one after configuration restore. ● Firmware Version - Current version of the firmware in the NAS. ● Hardware Address - Hardware Address of the NAS. ● IP Address - IP Address currently used by the NAS. ● Date - Current date of the NAS. ● Time - Current time of the NAS. ● Current Status - Indicates the current status of the NAS. This will usually state "Ready". If the NAS is not ready, the message will say why the NAS is not ready.
--------	--

Printer

Current Status: Out of Paper or No Printer

No. of Print Jobs: 0

[Delete Current Job](#)[Delete All Jobs](#)

Printer	<p>The NAS supports USB printer, and it can share the printer after you connect one printer into one USB port.</p> <ul style="list-style-type: none"> • Current Status - Possible states are On Line, Off Line, and <i>Out of Paper or No Printer.</i> • No. of Print Jobs - The total number of print jobs in the Print Queue, waiting to be printed.
---------	---

Internal Disks

Disk Mode: Mirroring (RAID 1)
 Disk Status: Rebuilding from Disk 1 to Disk 2: 28% Completed
 RAID 1 - Ready

RAID 1:
 Free Space: 297.66 GB Total Space: 297.66 GB

Information

Disk	Model	Capacity	Status
Disk 1	Hitachi HDT725032VLA360	305,242 MB	Used by RAID 1 [Source]
Disk 2	Hitachi HDT725032VLA360	305,242 MB	Used by RAID 1 [Target]

USB Disks

USB 1
 Model: No Disk

Partition	File System	Share	Total Size	Free Size

USB 2
 Model: No Disk

Partition	File System	Shared Folder	Total Size	Free Size

Disk	<p>Display the status of Internal and USB Disks.</p> <ul style="list-style-type: none"> • Model - Model name of the disk, it's provided by the manufacturer. • Total Space - Total amount of the disk space. • Free Space - Amount of the disk space still available to users. • Partition - Partition number of USB disk. • File System – File system used in the partition. • Share - Corresponding share of the partition. • Total Size - Total size of the partition. • Free Size - Free size of the partition.
------	---

Buttons

Shutdown Now	Shutdown the Server immediately. This will break all existing connections, including this one. Clicking this button does NOT save any data you have entered.
Restart Now	Restart (reboot) the Server. This will break all existing connections, including this one. The NAS Server will immediately restart, but could take a few minutes before it is available again. Clicking this button does NOT save any data you have entered.
Delete Current Job	Clicking this button will delete the Print Job currently being printed. Use this if the document is not printing correctly.
Delete All Jobs	Clicking this button will delete all Print Jobs in the Print Queue. Use this to clear the Print Queue.
View Log	Click this button to view the log file in separate window. The log file is a record of activity on the NAS Server, which can help in management and troubleshooting.
Refresh	Click this to update the data shown on screen.

4.5 Setup Menu - Network Screen

This screen allows you to set the IP Address and related information required for TCP/IP networks.

IP Address

These settings must match other devices and PCs on your LAN. Using the DHCP server function is recommended.

Obtain IP Address automatically (DHCP Client)
 Fixed IP Address

IP Address: . . .
 Network Mask: . . .
 Gateway: . . .

Obtain IP Address automatically (DHCP Client)	Do NOT select this unless you have a DHCP Server on your LAN. A DHCP Server can provide an IP Address to PCs and other devices when they boot.
Fixed IP Address	Select this if your LAN does not have a DHCP Server, and enter the following data.
IP Address	The IP Address must be unused, and compatible with the PCs on your LAN.
Network Mask	Enter the same Network Mask (Subnet Mask) used by PCs on your LAN.
Gateway	If your LAN has a Router or Gateway, enter its IP Address here. Otherwise, leave this blank.

DHCP Server

Enable DHCP Server

Start Address: . . .

Finish Address: . . .

The Network Attached Storage can act as a DHCP (Dynamic Host Configuration Protocol) Server, providing IP Addresses and related data to PCs and other devices.

Enable	Use this to Enable/Disable the DHCP Server. If you already have a DHCP Server, do not enable this feature.
Start Address	Enter the beginning of the range of IP Addresses to be allocated by the DHCP Server.
Finish Address	Enter the last address of range of IP Addresses to be allocated by the DHCP Server.

DNS Server

Obtain DNS Server Addresses from DHCP Server

Use Fixed DNS Server Addresses

Primary: . . .

Backup 1: . . . (Optional)

Backup 2: . . . (Optional)

DNS is required for E-Mail Alert, and desirable if using DHCP Server

A DNS (Domain Name Server) translates Internet addresses (e.g. microsoft.com) to IP Addresses. Use the same values as on your PC, or recommended by your ISP (Internet Service Provider).

At least one (1) DNS entry is required if using either the "E-Mail Alert" feature. Otherwise, the DNS entries may be left blank.

Obtain DNS Server Addresses from DHCP Server	Select this if you want to obtain DNS Server Addresses from DHCP server when DHCP Client is enabled.
Use Fixed DNS Server Addresses	Select this if you want to specify some DNS Server Addresses.
Primary	IP Address of the first DNS Server.
Backup 1	IP Address of the DNS Server to be tried if the first server is busy.

Backup 2	IP Address of the DNS Server to be tried if the second server is busy.
----------	--

WINS Server

Enable WINS

WINS Server:

. . .

Enable WINS	Enable this if your LAN has a WINS Server. If enabled, this device will register with the WINS Server. This will allow users on the LAN to locate this device through a Router. (Without WINS, "Network Neighborhood" or "My Network Places" only scans the local LAN segment.)
WINS Server	If WINS is enabled, enter the IP Address of your WINS Server. Normally, this will be a Windows NT/2000/XP Server.

Jumbo Frame

Frame Size:

1500 Bytes

Frame Size	The NAS support large frame, you select different frame size for your need.
------------	---

4.6 Setup Menu - System Screen

This screen contains some basic information about your NAS. After initial configuration, no changes should be required.

Identification	This screen contains some basic information about your NAS-7200. After initial configuration, no changes should be required.	
	Server Name:	<input type="text" value="NAS7200_4A9519"/>
	Comment:	<input type="text"/>
	Workgroup:	<input type="text" value="workgroup"/>
	Printer Name:	<input type="text" value="NAS7200_4A9519"/>

Name	If you wish, you can change the name of the NAS Server. Note that punctuation and other special characters (e.g. *"/\[]:; =,+?<>'`()# \$ %) cannot be used in the name.
Comment	Enter a comment if you wish (e.g. the location of the NAS Server). Note that special characters (e.g. \ , ' : ") cannot be used in it.
Workgroup Name	This should match the "Workgroup Name" on your PCs. If the Workgroup name does not match, access to the NAS Server is still possible, but the NAS Server will not appear when you click the "Browse Network" button (for example, when adding a Network Printer). Note that punctuation and other special characters (e.g. /] \ [: ; = , + * ? " > < ' `) cannot be used in the name.
Printer Name	Specify one name for the Printer Server. After you plug one printer into one USB port, the Printer Name will occur in Network Neighborhood and you can click it to install the Printer Server.

Date & Time

Time Zone: (GMT-08:00) Pacific Time(US, Canada); Tijuana

Change System Date and Time as Following

Date: Dec 02, 1999 (Month, Day, Year)

Time: 04 : 57 am

Time Zone	Select the correct time zone for your location.
Change System Date and Time as Following	Check this box for data and time update. The date and time setting is not sent to the server without check this box.
Local Date	Enter the local date. The NAS Server will set it own calendar according to the date you provide.
Local Time	Enter the local time at your location. The NAS Server will set its own clock according to the time you provide. Remember that this is not sent to the Server until you click "OK".

NTP

Synchronize with Time Server (NTP)


NTP Server:

Status:

Synchronize with NTP server every 24 Hours from 12 : 00 am

Enable NTP	If enabled, the NAS Server will synchronize its clock with a NTP (Network Time Protocol) Server.
NTP Server	Enter the domain name or IP address of the NTP server you wish to use. The NTP server can be a public server (on the Internet) or a local server (on your own network). Note that special characters (e.g. " / \ [] : ; = , + * ? < > ' `) cannot be used in it.
NTP Status	This shows the status of the NTP update procedure.
Synchronize ...	Select how often you want the NAS Server to synchronize its clock with the specified NTP server. You can also specify the time of the next synchronization. This allows you to specify that the synchronization should


	be performed (for example) at 11.00 pm each day.
Sync Now	Use this button to synchronize with the NTP server immediately.


Language | Language Environment: Chinese - Traditional 

Language Environment	Specify the language environment for FTP clients and Download Manager.
----------------------	--


Download Manager

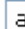

Enable Download Manager

Max Running BT Tasks: 5 

Max Running HTTP/FTP Tasks: 5 

Enable Schedule

Day: Every Day 

Time: From 12 00 am  to 12 00 am 

Enable Download Manager	If enabled, you can use Download Manager function on homepage to download files with FTP and HTTP URLs. If a special language exists in the URLs, you must make sure the Language Environment above is correct, or they possibly fail to be downloaded.
Maximum Running BT Tasks	Specify maximum number of BT tasks that can run at same time. It's up to 5 tasks.
Maximum Running HTTP/FTP Tasks	Specify maximum number of HTTP/FTP tasks that can run at same time. It's up to 10 tasks.
Enable Schedule	If enabled, Download Manager only runs on the specified time period. If disabled, Download Manager always runs. The option only takes effect when Download Manager is enabled.
Day	Day of the schedule. If you want Download Manager to run in specified period every day, you need select "Every Day", or you can select others to limit Download Manager to run on one specified day.
Time	Time of the schedule. If selection of Day is not "Every Day", the End Time cannot be after Start Time.

E-Mail Alert Send E-Mail Alerts when Problems are Detected

E-Mail Address (1):

E-Mail Address (2):

E-Mail Address (3):

From Address:

Subject :

Use Specified SMTP Mail Server

SMTP Mail Server: (Outgoing Mail Server)

SMTP Port Number: (25, 1024-65535)

Mail Server requires Authentication

Account Name:

Password:

Result of Test Mail:

Send E-Mail...	Check this to enable the sending of e-mail alerts by the NAS. Alerts will be sent when there is some problem requiring the Administrator's attention.
E-Mail Address	Enter from 1 to 3 E-Mail Addresses. The messages generated by the NAS will be sent to these destinations. Note that special characters (e.g. " / \ [] : ; = , + * ? < > ' `') cannot be used in them.
From Address (Optional)	Specify one E-Mail Address that appear in the "From" field of e-mail alert generated by the NAS. Usually it's helpful for e-mail alerts to avoid being filtered as junk mails.
Subject (Optional)	Enter the text you wish to appear in the "Subject" field of e-mail alert generated by the NAS. Note that special characters (e.g. " / \ [] : ; = . , + * ? < > ' `') cannot be used in it.
Send Test Mail	Send test mail to specified e-mail address to verify whether the e-mail address can be reached.
Use Specified SMTP Mail Server	You can specify one SMTP (Simple Mail Transport Protocol) server to be used to send E-Mail. It's optional.
SMTP Mail Server	Specify the address of the SMTP Mail Server.
SMTP Port Number	Specify the port number used by SMTP server. It's 25 by default.
Mail Server requires	If the SMTP Server requires a "login" in order to send mail, check it and

Authentication	enter your login name and password for the SMTP server. This is usually the same as the POP3 server used to receive e-mail. Meanwhile, you need specify the "From Address" as the E-Mail Address that is correlative with the Account Name.
Account Name	Specify the login name that is used to login the SMTP server.
Password	Specify the password that is used to login the SMTP server.

Options

Enable 'guest' account

- Allow anonymous Login for Windows Networking
- Allow anonymous access to "Public Data"

 Enable NFS Server

 Enable FTP Server

- Allow anonymous FTP login ("guest" rights)
- Support SSL

 Bandwidth Limit: KB/s

 Enable UPnP Support

 Enable HTTPS

 Enable Recycle Bin

 Clear Recycle Bin Termly:

 Port Number for HTTP (Web Browser) connections to this server :

Enable 'guest' account	<p>If enabled, then user can use "guest" as user ID to login to the NAS. If disabled, then "guest" will not be accepted as a login. If enabled, you can configure following options:</p> <ul style="list-style-type: none"> ● Allow anonymous Login for Windows Networking If enabled, then all Windows users will be able to access the NAS via Network Neighborhood/My Network Places, with "guest" access rights. By default, the "guest" user has Read/Write permission for all USB disks. ● Allow anonymous access to "Public Data" If enabled, then user can access files on Public Data on homepage anonymously.
Enable NFS Server	If enabled, then it will be possible for users to access files using a NFS (Network File System) client.
Enable FTP Server	If enabled, then it will be possible for users to upload and download files using a FTP client program on their PC. The FTP server supports UTF-8. If the FTP clients don't support UTF-8, please specify right Language

	Environment above.
Allow anonymous FTP login	The FTP server will prompt for a Username and Password when clients attempt to connect. If this option is Enabled, users will be able to enter "anonymous" as the Username, and any string as the Password. If this option is Disabled, users must provide their correct Name and Password.
Enable SSL	Enable SSL encryption support for the FTP server. To use this function, you must use FTP clients with SSL supported also.
Bandwidth Limit	Limit the maximum speed of data transfer for every FTP client. Value must be equal to or larger than 0. 0 means no limit.
Enable UPnP Support	If enabled, the NAS will broadcast it's availability. For LAN users with systems which support UPnP (e.g. Windows ME, Windows XP), an icon for the NAS will be automatically generated.
Enable HTTPS	If enabled, you can access the NAS's web pages with HTTPS (HTTP over SSL). This function can make sure all connections are encrypted and secure.
Enable Recycle Bin	If enabled, deleted files are removed to folders 'Recycle Bin' in every share. If you want to delete the files permanently, you need delete them from folders 'Recycle Bin' again.
Clear Recycle Bin Trimly	Set up a schedule to clear files that exist in the Recycle Bin trimly.
Port Number	<p>This port number is used for HTTP (Web Browser) connections to this Server. The default is 80, as used by Web Servers. If this is changed, you should use a number greater than 1024 (8080 is often used). Also, if the port is not 80, you must specify the port in your Web browser, in order to connect. To do this, add a ":" and the port number after the address: e.g.</p> <p style="text-align: center;">HTTP://192.168.0.100:8080</p> <p>This example assumes the NAS's IP Address is 192.168.0.100, and the port number is 8080.</p>

Buttons

Save	Click this button to save the settings on the page.
Cancel	Click this button to cancel the modifications on the page.
Restore to Default	Click this button to restore all system and network settings to default.
Clear Now	Click this button to delete all files that exist in the Recycle Bin immediately.

4.7 Setup Menu - Media Screen

This screen allows you to configure the settings for media functions.

iTunes Server

You can specify the settings of media function in this screen.

Enable iTunes Server

Server Name:

Content Directory:

Enable iTunes Server	If enabled, then the user can listen music that stored in the NAS via iTunes client. This iTunes Server supports files with extensions .mp3, .m4a, and .m4p. And the iTunes Server uses port number 3689.
Server Name	Specify the name of the iTunes Server.
Content Directory	Specify the location in which music need be served iTunes Server.

MP3 Broadcast

Enable MP3 Broadcast

Server Name:

Port Number:

Play by: Order Shuffle

Content Directory:

Enable MP3 Broadcast	If enabled, then the NAS will broadcast MP3 in specified folder, and user can listen to them by music players such as WinAMP etc. This MP3 Broadcast supports files with extension .mp3.
Server Name	Specify the name of the MP3 Broadcast.
Port	<p>This port number is used for HTTP connections to MP3 Broadcast.. The default is 1234.. If this is changed, you should use a number greater than 1024. In order to connect to the music broadcast via WinAMP etc, need add a ":" and the port number after the address, e.g.:</p> <p style="text-align: center;">HTTP://192.168.0.100:1234</p> <p>This example assumes the NAS's IP Address is 192.168.0.100, and the port number is 1234.</p>

Play by	Specify the order that MP3 should be broadcasted. <ul style="list-style-type: none"> ● Order - Play by order. ● Shuffle - Play by shuffle.
Content Directory	Specify the location in which MP3 need be broadcasted.

Media Server

Enable Media Server

Server Name:

Content Directory:

	Directory	Meida Type	
<input type="checkbox"/>	<input type="text"/>	All <input type="button" value="v"/>	<input type="button" value="Browse"/>
<input type="checkbox"/>	<input type="text"/>	All <input type="button" value="v"/>	<input type="button" value="Browse"/>
<input type="checkbox"/>	<input type="text"/>	All <input type="button" value="v"/>	<input type="button" value="Browse"/>
<input type="checkbox"/>	<input type="text"/>	All <input type="button" value="v"/>	<input type="button" value="Browse"/>

Enable Media Server	If enabled, the NAS can be located by compatible Media Adapters, using the UPnP AV standard developed by Intel and its partners. Media content on the NAS (in the Content Directories specified below) can then be accessed and played by the Media Adapters.
Server Name	Name of the Media Server that is displayed on client devices.
Content Directory	Directories where the Media Server shall scan for media content. You can specify four Content Directories at most. You should click the "Browse" button to select the desired folder. Each directory can be limited to a certain media type. The default setting will scan for all content types.

Buttons

Browse	Click this button to select Content Directory.
Save	Click this button to save the settings on the page.
Cancel	Click this button to cancel the modifications on the page.

4.8 Advanced Menu – Groups Screen

This screen allows you to manage the User Groups that exist on the NAS Server.

Use this screen to create and organize the User Groups. Access permissions to Shares are granted to User Groups, not individual users.

New Group Name:

Existing Groups

```
administrators
everyone
===== End of List =====
```

New Group	Use this area to create a new group.
Existing Groups	This shows the list of all Groups. Two groups - "everyone" and "administrators" - always exist. These groups cannot be deleted.

Buttons

Create	Use this Button to create a new Group. Enter the desired name for the new Group in the "Name" field, then click this button.
Access Rights	Clicking this will display the shares which members of the current Group are able to access. You can then assign, remove or modify access rights for this Group. Note: The "administrators" Group ALWAYS has Read/Write access to ALL Shares.
Members	Clicking this will display the users who are members of the selected Group. You can then add or delete members. Note: The "everyone" Group ALWAYS contains all users. You cannot add or remove members.
Delete	Click this Button to Delete the selected Group. Note: The "administrators" and "everyone" Groups can not be deleted.

Access Rights Screen

This screen allows you to view and modify the Groups which can access this Share.

Note: The administrators group ALWAYS has Read/Write (R/W) access to ALL shares.

Group Access Rights

Group Name: administrators

Accessible Shares		Other Shares
ADMIN (RW) DISK (RW) -- End of List --	<input type="button" value=" << Read Access"/> <input type="button" value=" << R/W Access"/> <input type="button" value=" No Access >>"/>	-- End of List --

Select multiple Shares by holding CTRL while selecting.

Group Name	The name of the Group being modified is shown above the 2 lists of shares.
Accessible Shares	The "Accessible Shares" column on the left shows which Shares this Group can currently access. The type of access is shown in brackets. (R = Read Only, R/W = Read-Write). Note: The "administrators" Group has R/W access to ALL shares.
Other Shares	The "Other Shares" column on the right shows all other Shares. The current Group has no access to these Shares.

Operation

To Add Access Rights:	Select the Share or Share in the right-hand column, then click the "<< Read Access" to provide Read-Only access, or the "<< R/W Access" Button to provide Read-Write access. Multiple Shares can be selected by holding down the CTRL Key while selecting.
To Remove Access Rights:	Select the Share or Shares in the left-hand column, then click the "No Access >>" Button. Multiple Shares can be selected by holding down the CTRL Key while selecting.
When finished, click the "Close" Button.	

Group Members

This screen allows you to check which users are members of the group, and to add or revoke membership of this group.

Note: The "everyone" Group ALWAYS contains all users. You cannot add or remove members.

Group Members

Group Name: administrators

Members (users)		Other Users
admin -- End of List --	<input type="button" value=" <<"/> <input type="button" value=" >>"/>	guest -- End of List --

Select multiple Users by holding CTRL while selecting.

Group Name	The name of the Group being modified is shown at the top of the screen.
Members (users)	The "Members" column on the left shows the users who are currently members of this Group.
Other Users	The "Other Users" column on the right shows users who are not currently members of this Group.

Operation

To Add a Member:	Select the User or Users in the right-hand column, then click the "<<" Button. Multiple Users can be selected by holding down the CTRL Key while selecting.
To Delete a Member:	Select the User or Users in the left-hand column, then click the ">>" Button. Multiple Users can be selected by holding down the CTRL Key while selecting.
When finished, click the "Close" Button.	

4.9 Advanced Menu – Shares Screen

This screen allows you to manage the Shares that exist on the NAS Server. A "Share" is a folder (directory) on the NAS Server that a User Group can access.

- Only the NAS Server Administrators can create Shares. However, within a Share, users who have access to that Share can create other folders (directories) as well as files.
- A Share can be accessed by many User Groups, and a User Group can access many Shares.
- If a folder within a Share is also a Share, then all users with access to the outer share will ALWAYS have the same access to the inner share.

Existing Shares

Shares are folders which are available to network users. Use this screen to create and manage shares.

```
ADMIN
DISK
===== End of List =====
```

Deleting a Share does NOT delete the folder or files.

Share List	All existing shares are listed. When an existing Share is selected in the list of Shares, its details are displayed in the "Share Properties" area.
Access Button	Click this Button to view the Groups that have access to the selected Share, and change these access rights as required.
Delete Button	Click this Button to Delete the selected Share. Deleting a Share does NOT delete its folder or any data. The folder and its data is still accessible by the "administrators" group.

Properties

Name:

Comment:

Location: Default Folder
 Specified

Location can NOT be changed once share is created.

Name	The current name will be displayed. The Share Name can be changed if you wish. This does not change the name of the folder (directory) associated with the Share. Note that punctuation and other special characters (e.g. " \ [] : ; = , + * ? < > ' ` \$ % @ #) cannot be used in the name.
Comment (Optional)	Change or enter a comment if you wish. Note that special characters (e.g. " \ : , ') cannot be used in it.
Location	The Location associated with the Share. Note that once a Share is created, its location can not be changed. Option regarding location: <ul style="list-style-type: none"> ● Folder - If "Default Folder" is selected, the share is created in the root folder (directory). If "Specify" is selected, you can specify the folder (directory) where you want the share. If the folder does not exist, it will be created. Note that special characters (e.g. " : ; = , + * ? < > ' `) cannot be used in it.

Operations

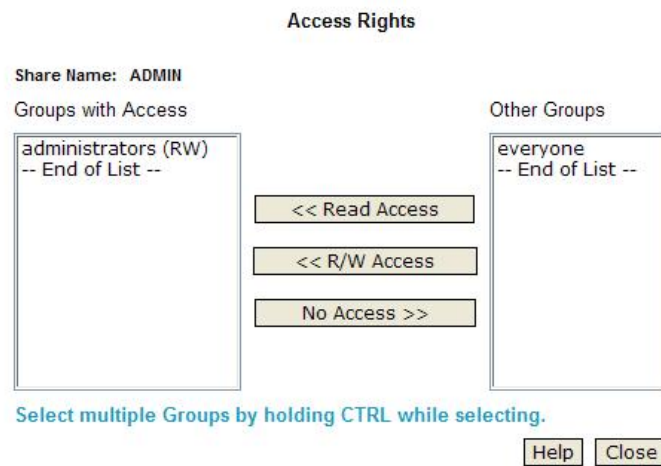
Access	Click this Button to view the Groups, which have access to the selected Share, and change these access rights as required.
Delete	Click this Button to Delete the selected Share.
Save as New Share	After entering the required data in the "Share Properties" area, use this Button to create a new Share.
Clear Form	Clear the form, preparing it for the creation of a new Share.
Save	Use this Button change the properties of a Share, as follows: <ol style="list-style-type: none"> 1. Select the desired Share in the Share list. Its details will be displayed in the "Share Properties" area.

	<ol style="list-style-type: none"> 2. Change the Share properties as required. Note that you can NOT change the location. 3. Click the "Save" button to save your changes.
--	--

Share Access

This screen allows you to view and modify the Groups, which can access this share.

Note: The administrators group ALWAYS has R/W access to ALL shares



Share Name	The name of the Share being modified is shown above the 2 lists of Groups.
Groups with Access	<p>The "Groups with Access" column on the left shows, which group, can currently access this Share. The type of access is shown in brackets. (R = Read Only, R/W = Read-Write).</p> <p>Note: The "administrators" Group has R/W access to ALL shares.</p>
Other Groups	The "Other Groups" column on the right shows all other Groups on the current Disk Drive. The current Share cannot be accessed by these Groups.

Operation

To Add Access Rights	Select the Group or Groups in the right-hand column, then click the "<< Read Access" to provide Read-Only access, or the "<< R/W Access" Button to provide Read-Write access. Multiple Groups can be selected by holding down the CTRL Key while selecting.
To Remove Access Rights	Select the Group or Groups in the left-hand column, then click the "No Access >>" Button. Multiple Groups can be selected by holding down the CTRL Key while selecting.
When finished, click the "Close" Button.	

4.10 Advanced Menu – Backup Screen

There are 2 types of backup:

- Configuration Backup - This facility allows you to Backup (Download) and Restore (Upload) the NAS's configuration file. The configuration file contains all network information, as well as the User, Group, and Share information. It does NOT include any information about the files stored on the NAS
NOTE: Using this feature will overwrite (destroy) any existing configuration information.
- Data Backup - Data files can be backed up from the NAS to another network device, or from another network device to the NAS

Configuration Backup

You can Backup (Download) the configuration file to your PC, or Restore (Upload) a previously-saved configuration file.

Back Up

Restore

Download Button	Click this to download the configuration file and save it on your PC.
Upload Button	Use this to restore a previously-saved configuration file from your PC to the NAS

Data Backup

You can backup data **to** or **from** your NAS-7200.

Backup Jobs

Back Up Now

Stop

Status

Add New Job

Modify

Delete

Backup Jobs	<p>This lists any Backup jobs you have defined. If you have not defined any jobs, the list will be empty. For each job which has been defined, the following data is shown:</p> <ul style="list-style-type: none"> ● Name - the name you assigned to this backup job. ● Source & Destination - The name of the source and destination devices are shown in the form Source => Destination.
-------------	---

	<ul style="list-style-type: none"> ● Date/Time - The date and time of the last backup are shown.
Backup Now	Run the selected backup job immediately.
Status	This button will open a sub-window that shows the status of all Backup jobs.
Modify	This button will open a sub-window where you can change the settings of the selected backup job.
Delete	Delete the selected backup job.
Add New Job	This button will open a sub-window where you can define a new backup job.
View Log	View the log of completed backup jobs in a sub-window.

Add Backup Job

From this screen, you can add new backup jobs, which be displayed on the Backup screen.

Backup Job

Name:

Backup Type:

Direction: From this NAS-7200 to another device
 From another device to this NAS-7200

Local Location: Folder:

Remote Location: Server Name:
 Shared Folder: (e.g.: /share)
 The Server Requires Authentication
 User Name:
 Password:

Schedule: :

Name	Enter a suitable name for this job.
Backup Type	Select the desired backup type. <ul style="list-style-type: none"> ● Full - all files will be backed up. ● Incremental - only changed files will be backed up. ● Synchronize - all files are backed up, then any files on the destination which do not exist on the source are deleted.
Direction	Select the desired option: <ul style="list-style-type: none"> ● From this NAS to another device. ● From another device to this NAS
Local Location	Select the desired folder in this NAS.. <ul style="list-style-type: none"> ● If backing up from this NAS, select the folder you wish to backup. ● If backing up from another device to this NAS, select the folder where you want the backed-up data to be stored.

Remote Location	<p>Enter the details of the remote device.</p> <ul style="list-style-type: none"> ● Name - enter the name of the other device, as seen on the network. ● Shared Folder - Enter the name of the shared folder. Depending on the direction of the backup, this is either the share to be backed up, or the destination for the backed-up data. ● The Server Requires Authentication - If the share is password-protected, enable this checkbox and enter the User Name and Password required to gain access to the share.
Schedule	<p>Select the desired option from the list:</p> <ul style="list-style-type: none"> ● Never - This will disable this backup job. ● Every Day - Select this to have the backup job performed each day, at the specified time. ● Every Monday, Every Tuesday, ... Select this to have the backup performed once per week, on the specified day. <p>Use the time fields (hour, minute, am/pm) to specify when the backup job should be performed.</p>

Buttons

Browse	Click it to select one folder in this NAS.
Save	Click it to apply modifications in this window.
Close	Close the window.

4.11 Advanced Menu – Disk Screen

This screen allows you to maintain the disks in this NAS

Disk Mode - Disk mode select: Separate Disk, JBOD/LVM, Raid 0 and Raid 1. Any data on the disk will be lost if change disk mode!

Disk Mode | Use this screen to perform any disk maintenance required.

Current Mode: RAID 1

Disk Mode	<p>This indicates the current working mode of Internal Disks. It can be one following modes:</p> <ul style="list-style-type: none">● Separate Disks Disk 1 and Disk 2 work separately (Recommended) .● JBOD/LVM Disk 1 and Disk 2 are bound into one logical volume. Total capacity is equal to the capacity of the existing drive(s). To work in this configuration, at least one drive must exist. If this configuration is selected with only one drive installed, the second drive will be configured to extend the capacity of the logical volume when it is installed.● Mirroring (Raid 1) Disk 1 is mirrored into Disk 2. Total capacity is equal to the capacity of smaller drive. To select this mode, both drives must exist.● Striping (Raid 0) Disk 1 and Disk 2 are striped into one logical volume. Total capacity is equal to two times the smaller capacity of the two drives. To select this mode, both drives must exist.
-----------	--

Format Disk - use this after installing a new disk. The disk will be partitioned and quick-formatted. Any data on the disk will be lost!

Format

RAID 1:	Formatted	Format
USB 1:	Not Installed	Format
USB 2:	Not Installed	Format

The format operation will destroy any data on the disk !

Format	<p>This includes status of Internal Disk and USB Disks.</p> <p>Internal Disk:</p> <ul style="list-style-type: none"> ● No Installed - No disk is inserted, or connection or disk has failed. ● Not Formatted - Disk has been detected, but it is not ready for use. Use the "Format" button to prepare the disk for use. ● Formatting - This message will only be displayed after you have clicked the "Format" button. (See below for details of this button.) ● Formatted - Disk is ready for use. <p>USB Disks:</p> <ul style="list-style-type: none"> ● No Installed - No disk is inserted into this USB port. ● Not Formatted - This USB disk hasn't been formatted into FAT or NTFS file system. You can click "Format" button to format it. ● Formatted - Disk is ready for use.
--------	--

Scandisk - running the Scandisk (Disk Check) program will check the file system, and correct any errors found. This program should be run regularly. The Scandisk program will also run automatically if an error condition is detected, such as an abnormal shutdown due to loss of power.

Scandisk

RAID 1:

Schedule:

During a Scandisk, the disk cannot be accessed.

Scandisk	<p>This can have any of the following values:</p> <ul style="list-style-type: none"> ● N/A - No disk is available. ● No Scanned - No Scandisk has been performed recently on this drive. ● Scanning - Scandisk operation is in progress. The disk cannot be used while a Scandisk is in progress. If required, use the "Stop" button to terminate the Scandisk operation and gain access to data on the disk. (To see the results of the Scandisk operation, use the "View Disk Log" button.) ● Completed - The last Scandisk operation has been completed. You can use the "View Disk Log" button to view the results. ● Terminated - The last Scandisk operation was cancelled by the Administrator before it was completed. <p>Schedule</p> <p>Use these fields to set up a schedule to run Scandisk regularly, if desired. The available options are:</p> <ul style="list-style-type: none"> ● Never - Scandisk will not be scheduled to run. ● Every Day - select this to have scandisk run each day, at the specified time. ● Every Monday, Every Tuesday, ... - Select this to have the scandisk run once per week, on the specified day. <p>Use the time fields (hour, minute, am/pm) to specify when the scandisk operation should be performed.</p>
----------	---

S.M.A.R.T. - S.M.A.R.T. (Self-Monitoring, Analysis, and Reporting Technology) can warn of impending problems with the Hard Disk, before it actually fails. This test should be performed regularly.

S.M.A.R.T.

Disk 1:

Disk 2:

Schedule:

S.M.A.R.T.	<p>This can have any of the following values:</p> <ul style="list-style-type: none"> ● Not Installed - No disk is available. ● Not Checked - No S.M.A.R.T. check has been performed on this drive since system boots up. ● OK - No errors were found in the last test. ● Going to fail - The S.M.A.R.T. check found errors on the drive and the disk is going to fail. <p>Schedule</p> <p>Use these fields to set up a schedule to run S.M.A.R.T. check regularly, if desired. The available options are:</p> <ul style="list-style-type: none"> ● Never - S.M.A.R.T. check will not be scheduled to run. ● Every Day - Select this to have S.M.A.R.T. check to run each day, at the specified time. ● Every Monday, Every Tuesday, ... - Select this to have the scandisk run once per week, on the specified day. <p>Use the time fields (hour, minute, am/pm) to specify when the S.M.A.R.T. check should be performed.</p>
------------	---

Standby

Set Hard Disk to Standby Mode after .

Power off the fan after Internal Disk is in Standby Mode.

Standby	<p>Use the "Set Hard Disk to standby mode..." setting to determine if and when the hard disk drives should be switched to "Standby" mode.</p> <p>Use the "Turn off the fan..." setting to determine if and when the fan should be turned off.</p>
---------	---

Buttons

Change	Click this button to enter the screen of changing Disk Mode.
Format	Use this button to format the disk. This will partition and quick-format the new disk. WARNING! This will destroy any data on the disk. Once started, this process can NOT be halted or reversed.
S.M.A.R.T.	<ul style="list-style-type: none">● Check - Click this button to run the S.M.A.R.T. check immediately.
Scandisk	<ul style="list-style-type: none">● Start - Click the button to start the Scandisk. The Scandisk could take long time, and the disk is unavailable to users while the Scandisk is in progress.● Stop - If a Scandisk is in progress, click this button to terminate the Scandisk immediately.
Save	Click it to save the modifications in this window.
Cancel	Restore the settings on the screen to their values after the last "Save" operation. Clicking "Cancel" has NO EFFECT on any operations in progress.
View Log	View the log messages of disk maintenance.

4.12 Advanced Menu – Upgrade Screen

The Upgrade facility allows you to upgrade the NAS Server's software. You need to obtain the upgrade file from your dealer or supplier.

Note that the NAS Server is unavailable during the upgrade process, and all connections will be lost, including this one.

The NAS Server will reboot once the upgrade installation is completed. The procedure may take from 5 to 10 minutes.

Current Firmware	<p>Use this screen to upgrade the firmware in your NAS-7200.</p> <p>Current Firmware Version: V3.9R01</p>
Upgrade	<p>Firmware File: <input type="text"/> <input type="button" value="Browse..."/></p> <p>Warning: Do not power-off the NAS-7200 while it is being upgraded.</p>

Current Firmware Version	This displays the version number of the NAS Server's current firmware.
Firmware File	<p>Click the "Browse" button to browse the folders on your PC and select the Firmware file.</p> <p>Note: Implementation of this feature is Browser-dependent.</p>

Buttons

Start Upgrade Button	Click this button to start upgrading the firmware.
----------------------	--

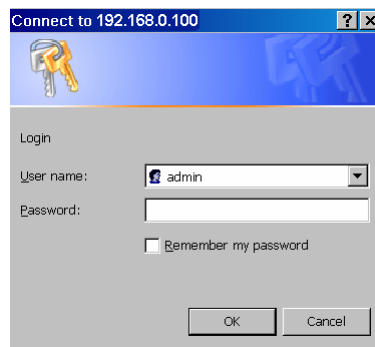
5. Download Manager

Download manager allow you to download file via FTP, HTTP or BT without PC. Just set on NAS and will base on your setting to download file automatically.

5.1 The Web-base Download Management Interface

To access the Download Manager interface, click the "Download Manager" link on the home page.

You will then be prompted for a password, as shown below.



Enter "admin" for the name, and leave the password blank or user ID and password who registered on this NAS

5.2 Download Management Screen

This screen allows you manage your download tasks.



Manager Status	Status of the Download Manager, it can be 'Enabled' or 'Disabled'.
Owner	Name of the user that logins the Download Manager.
File Name	Name of the saved file in the NAS for the task.
File Size	Total size of the downloaded file for the task.
Speed	Download speed of the task.
Percent	Completed percentage of the downloaded file from the URL.
Status	Download status of the URL, it can be "Waiting", "Connecting", "Failed", "Stopped", "Transferring" or "Done".
Admin	Select the operation on the task.

Action


Task Details	View the detailed information of the task.
Run Task	Start to run the selected task.
Stop Task	Stop the selected task.
Delete Task	Delete selected tasks.
Move Up	Increase the priority of the task.
Move Down	Decrease the priority of the task.
Logout	Leave the screen of Download Manager.
Add New Task	Open the window to add new task.
Refresh	Refresh the status of tasks.
Help	Click it to view on-line help.

5.3 Add New Task Screen

This screen allows you define download task of Download Manager.

Source
 Type: 
 URL:

Or


Source
 Type: 
 Torrent File:
 From URL
 From Local PC

Type	Specify type of the file to be downloaded. It can be HTTP/FTP or BT (Bit Torrent).
URL (HTTP/FTP)	Specify the URL if type is HTTP/FTP.
Torrent File	Specify the torrent file with which you need download files. You can upload it from local pc or provide one HTTP/FTP URL for it.

Authentication Required (Optional)

Account:
 Password:

Authentication Required (Optional)	If authentication is needed to access the URL, need enable it and input the account and password.
Account	Account name that is used to access the URL if necessary.
Password	Password that is used to access the URL if necessary.

DestinationShare Folder: ADMIN 1 Subdirectory: (e.g.: /movie)

Share Folder	Select name of the share where downloaded file will be saved.
Subdirectory	Select the subdirectory under the selected share where downloaded file will be saved.

Action

Save	Save the new task.
Cancel	Cancel the modifications on the web page.
Close	Close the window.

6. Download Manager

If your LAN is connected to the Internet, typically by a Broadband Gateway/Router and Broadband modem, you can make the NAS available via the Internet. Features available to Internet users include:

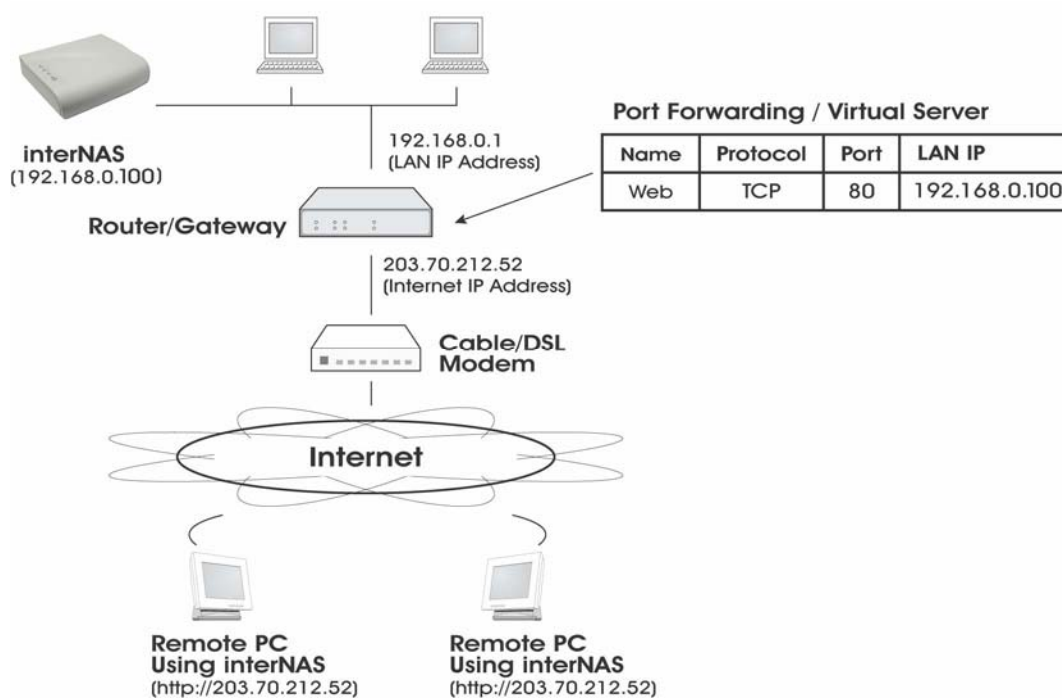
- Using a Web browser to view and download files.
- Remote management

6.1 Making the NAS available via the Internet

If your LAN is connected to the Internet via a Router or Gateway, you can make the NAS available from the Internet.

No changes to the NAS configuration are required, unless you wish to use a port number other than the default value of 80 for Web connections.

Your Router or Gateway must be configured to pass incoming HTTP connections (and optionally, IPP connections) to the NAS. This feature is normally called Port Forwarding or Virtual Servers, and is illustrated below.



Connecting via the Internet

- The default port number for Web browser connections is 80. If you prefer to use a different port number, you can specify the port number on the NAS System screen. The

"Web" entry for /Port Forwarding / Virtual Server must then use the port number specified on the NAS System screen.

- To connect to the NAS, Internet users need to know and use the Internet IP address of your Router/Gateway. (If the port number is not 80, they also need to know the port number.)
- If you have a domain name, users can connect using the domain name instead of the IP address.
If your Router/Gateway supports Dynamic DNS, you can use a domain name even if you get a different IP address every time you connect to your ISP. Check the documentation of your Router/Gateway for further information.

6.2 Using Web Browser from the Internet

This is identical to using your Web browser from the LAN. See "Using the Web File Sharing" for details.

But remember:

- You must use the Internet IP address to connect to the NAS, NOT the LAN IP address.
- If the port number used by the NAS has been changed from the default (80), you must specify the correct port number when you connect.

For example, if the port is 8080, and the Internet IP address is 203.70.212.52, enter the following as your browser's Address or Location: `HTTP://203.70.212.52:8080`

6.3 Printing via IPP (Internet Printing Protocol)

To print to the NAS via the Internet, the port used for IPP (TCP port 631) must be associated with the NAS.

The NAS is an IPP Server. To use IPP, your PC must be an IPP client. Windows 2000 and XP have built-in support for IPP, so there is no need to use the provided IPP client program.

IPP Setup - Windows 2000/XP

1. Start the Add Printer wizard.
2. Select Network Printer, and click "Next" to see the Locate your Printer screen, as shown below.



3. Select Connect to a printer on the Internet or on your Intranet, and enter the URL of the NAS as follows.

`http://ip_address:631/printers/printer_name`

Where:

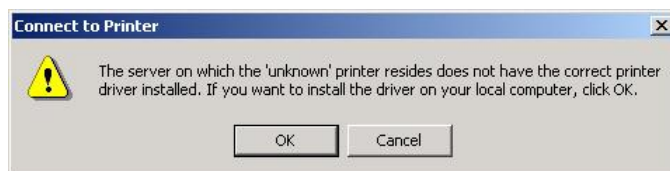
- IP_address represents the IP Address used to access the NAS. (As explained earlier, this may be the Internet address of a Gateway, rather than the NAS itself.)
- Printer_name is the name of the printer, as set on the NAS System screen.
- The other text is fixed, and can NOT be changed. It must be entered exactly as shown, including the same case. (The path is case sensitive.)

Example:

http://203.70.212.52:631/printers/LKLG974163_p1

4. Click "Next"

If the connection can be established, and the printer on that port is on-line, the following dialog will be displayed.



5. Click "OK", and then select the printer manufacturer and model to match the printer connected to the port on the IPP Server.
6. Click "Next", and complete the Wizard.

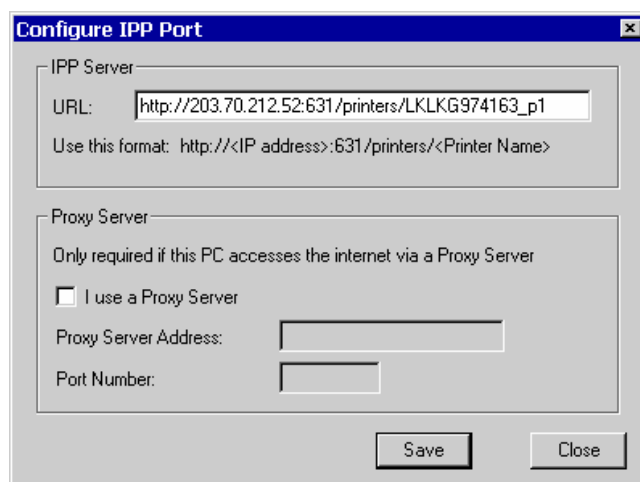
IPP Client Setup (Windows 9x, ME)

You need to install the supplied IPP client program, as follows:

1. Insert the NAS CD-ROM in your drive. If the program does not start automatically, run the NAS_Setup.exe program in the top-level folder.
2. On the first screen, click the icon for IPP Client.
3. Follow the prompts to complete the installation.

IPP Client Configuration

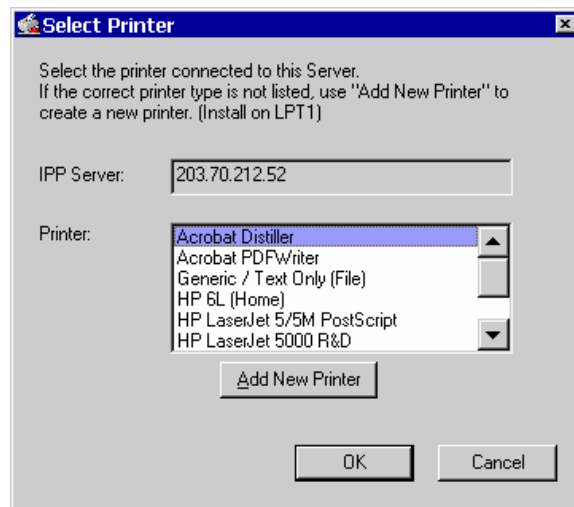
1. Click the "Add IPP Port" icon. (In future, you can use the program entry created in the Start Menu)
2. A screen like the following will be displayed.



3. Configure this screen as follows:

<p>IPP Server</p>	<p>Enter the Internet IP address used to connect to the NAS, as follows.</p> <p><code>http://ip_address:631/printers/printer_name</code></p> <p>Where:</p> <p>IP_address represents the IP Address used to access the NAS. (As explained earlier, this may be the Internet address of a Gateway, rather than the NAS itself.)</p> <p>Printer_name is the name of the printer, as set on the NAS System screen.</p> <p>The other text is fixed, and can NOT be changed. It must be entered exactly as shown.</p> <p>Example: <code>http://203.70.212.52:631/printers/LKLKG974163_p1</code></p>
<p>Proxy Server</p>	<p>If Internet access from your PC is via a Proxy Server, check Access IPP Server via Proxy Server, and enter details of your Proxy Server. (These will be the same as your Browser configuration, so check your Browser settings.)</p>

4. Click Save to create the IPP port on your system. You will see the following dialog:



5. Either selects an existing printer to use the new port, and click OK.
- OR
- Click the "Add New Printer" button to start the Add Printer wizard.
 - Complete the Wizard, installing the desired printer as a local printer on your PC.
 - When returned to this screen, select the new printer and click OK.
6. The selected printer is now associated with the remote NAS, and installation is complete.

Changing the IPP Port Settings

After the IPP port is created, you can reach the IPP Port screen via the Windows Port Settings button:

1. Open the Printers folder (Start - Settings - Printers)
2. Right-click the IPP Printer, and select Properties.
3. Locate and click the Port Settings button (on the Details or Port tab, depending on your version of Windows).

Using the IPP Printer

The IPP Printer can be selected and used like any other Windows printer, but your Internet connection needs to be active.

An NAS may be unavailable for IPP printing for any of the following reasons:

- It is powered off.
- The IP Address of the Router/Gateway for the remote LAN has changed.
- The Internet connection used by the IPP Server is down.
- Network congestion causes the connection attempt to time out.

6.4 Remote Management

Connection via your Web browser from the Internet is the same as connecting via the LAN.

But remember:

- You must use the Internet IP address to connect to the NAS, NOT the LAN IP address.
- If the port number used by the NAS has been changed from the default (80), you must specify the correct port number when you connect.

For example, if the port is 8080, and the Internet IP address is 203.70.212.52, enter the following as your browser's Address or Location: `HTTP://203.70.212.52:8080`

Once connected to the NAS via the Internet, all the Web-based management features are available.

However, the "Browse" button on the Shares screen only allows Web-based file browsing. (If using Internet Explorer on Windows, LAN users can browse shares using Windows Explorer.)

Appendix A: Licenses

Overview

Many software components are covered by the GNU GPL (General Public License). Some are covered by the BSD License.

- The following table provides details of the various components.
- The text of both Licenses is below.

Package Name	License
bash	GPL
bftpd	GPL
BusyBox	GPL
CUPS	GPL
e2fsprogs	GPL
gawk	GPL
gdbm	GPL
glibc	LGPL
hdparm	BSD
Kernel	GPL
libtermcap	LGPL
Lilo	BSD
LPRng	GPL
mod-utils	GPL
net-tools	GPL
openssl	BSD

pam	BSD or GPL
quota	BSD
Samba server	GPL
sh-util	GPL
smtpclient	GPL
sysVinit	GPL
telnet-server	BSD
textutils	GPL
thttpd	BSD
Tinylogin	GPL
Ucsc-smartsuite	GPL
udhcp	GPL
upnpsdk	BSD
util-linux	GPL
vixie-cron	Distributable
XFS patch	GPL
xfsdump	GPL
xfsplogs	GPL
xinetd	Distributable

BSD License

BSD License Information

Copyright (c) 2002. All rights reserved.

Redistribution and use in source and binary forms, with or without modification, are permitted provided that the following conditions are met:

- Redistributions of source code must retain the above copyright notice, this list of conditions and the following disclaimer.
- Redistributions in binary form must reproduce the above copyright notice, this list of conditions and the following disclaimer in the documentation and/or other materials provided with the distribution.
- Neither the name of the BSD organization nor the names of its contributors may be used to endorse or promote products derived from this software without specific prior written permission.

THIS SOFTWARE IS PROVIDED BY THE COPYRIGHT HOLDERS AND CONTRIBUTORS "AS IS" AND ANY EXPRESS OR IMPLIED WARRANTIES, INCLUDING, BUT NOT LIMITED TO, THE IMPLIED WARRANTIES OF MERCHANTABILITY AND FITNESS FOR A PARTICULAR PURPOSE ARE DISCLAIMED. IN NO EVENT SHALL THE COPYRIGHT OWNER OR CONTRIBUTORS BE LIABLE FOR ANY DIRECT, INDIRECT, INCIDENTAL, SPECIAL, EXEMPLARY, OR CONSEQUENTIAL DAMAGES (INCLUDING, BUT NOT LIMITED TO, PROCUREMENT OF SUBSTITUTE GOODS OR SERVICES; LOSS OF USE, DATA, OR PROFITS; OR BUSINESS INTERRUPTION) HOWEVER CAUSED AND ON ANY THEORY OF LIABILITY, WHETHER IN CONTRACT, STRICT LIABILITY, OR TORT (INCLUDING NEGLIGENCE OR OTHERWISE) ARISING IN ANY WAY OUT OF THE USE OF THIS SOFTWARE, EVEN IF ADVISED OF THE POSSIBILITY OF SUCH DAMAGE.

GNU General Public License

GNU GENERAL PUBLIC LICENSE

Version 2, June 1991

Copyright (C) 1989, 1991 Free Software Foundation, Inc.

59 Temple Place, Suite 330, Boston, MA 02111-1307 USA

Everyone is permitted to copy and distribute verbatim copies of this license document, but changing it is not allowed.

Preamble

The licenses for most software are designed to take away your freedom to share and change it. By contrast, the GNU General Public License is intended to guarantee your freedom to share and change free software--to make sure the software is free for all its users. This General Public License applies to most of the Free Software Foundation's software and to any other program whose authors commit to using it. (Some other Free Software Foundation software is covered by the GNU Library General Public License instead.) You can apply it to your programs, too.

When we speak of free software, we are referring to freedom, not price. Our General Public Licenses are designed to make sure that you have the freedom to distribute copies of free software (and charge for this service if you wish), that you receive source code or can get it if you want it, that you can change the software or use pieces of it in new free programs; and that you know you can do these things.

To protect your rights, we need to make restrictions that forbid anyone to deny you these rights or to ask you to surrender the rights. These restrictions translate to certain responsibilities for you if you distribute copies of the software, or if you modify it.

For example, if you distribute copies of such a program, whether gratis or for a fee, you must give the recipients all the rights that you have. You must make sure that they, too, receive or can get the source code. And you must show them these terms so they know their rights.

We protect your rights with two steps: (1) copyright the software, and (2) offer you this license which gives you legal permission to copy, distribute and/or modify the software.

Also, for each author's protection and ours, we want to make certain that everyone understands that there is no warranty for this free software. If the software is modified by someone else and passed on, we want its recipients to know that what they have is not the original, so that any problems introduced by others will not reflect on the original authors' reputations.

Finally, any free program is threatened constantly by software patents. We wish to avoid the danger that redistributors of a free program will individually obtain patent licenses, in effect making the program proprietary. To prevent this, we have made it clear that any patent must be licensed for everyone's free use or not licensed at all. The precise terms and conditions for copying, distribution and modification follow.

GNU GENERAL PUBLIC LICENSE

Terms And Conditions For Copying, Distribution And Modification

0. This License applies to any program or other work which contains a notice placed by the copyright holder saying it may be distributed under the terms of this General Public License. The "Program", below, refers to any such program or work, and a "work based on the Program" means either the Program or any derivative work under copyright law: that is to say, a work containing the Program or a portion of it, either verbatim or with modifications and/or translated into another language. (Hereinafter, translation is included without limitation in the term "modification".) Each licensee is addressed as "you".

Activities other than copying, distribution and modification are not covered by this License; they are outside its scope. The act of running the Program is not restricted, and the output from the Program is covered only if its contents constitute a work based on the Program (independent of having been made by running the Program). Whether that is true depends on what the Program does.

1. You may copy and distribute verbatim copies of the Program's source code as you receive it, in any medium, provided that you conspicuously and appropriately publish on each copy an appropriate copyright notice and disclaimer of warranty; keep intact all the notices that refer to this License and to the absence of any warranty; and give any other recipients of the Program a copy of this License along with the Program.

You may charge a fee for the physical act of transferring a copy, and you may at your option offer warranty protection in exchange for a fee.

2. You may modify your copy or copies of the Program or any portion of it, thus forming a work based on the Program, and copy and distribute such modifications or work under the terms of Section 1 above, provided that you also meet all of these conditions:

a) You must cause the modified files to carry prominent notices stating that you changed the files and the date of any change.

b) You must cause any work that you distribute or publish, that in whole or in part contains or is derived from the Program or any part thereof, to be licensed as a whole at no charge to all third parties under the terms of this License.

c) If the modified program normally reads commands interactively when run, you must cause it, when started running for such interactive use in the most ordinary way, to print or display an announcement including an appropriate copyright notice and a notice that there is no warranty (or else, saying that you provide a warranty) and that users may redistribute the program under these conditions, and telling the user how to view a copy of this License. (Exception: if the Program itself is interactive but does not normally print such an announcement, your work based on the Program is not required to print an announcement.)

These requirements apply to the modified work as a whole. If identifiable sections of that work are not derived from the Program, and can be reasonably considered independent and separate works in themselves, then this License, and its terms, do not apply to those sections when you distribute them as separate works. But when you distribute the same sections as part of a whole which is a work based on the Program, the distribution of the whole must be on the terms of this License, whose permissions for other licensees extend to the entire whole, and thus to each and every part regardless of who wrote it. Thus, it is not the intent of this section to claim rights or contest your rights to work written entirely by you; rather, the intent is to exercise the right to control the distribution of derivative or collective works based on the Program.

In addition, mere aggregation of another work not based on the Program with the Program (or with a work based on the Program) on a volume of a storage or distribution medium does not bring the other work under the scope of this License.

3. You may copy and distribute the Program (or a work based on it, under Section 2) in object code or executable form under the terms of Sections 1 and 2 above provided that you also do one of the following:

a) Accompany it with the complete corresponding machine-readable source code, which must be distributed under the terms of Sections 1 and 2 above on a medium customarily used for software interchange; or,

b) Accompany it with a written offer, valid for at least three years, to give any third party, for a charge no more than your cost of physically performing source distribution, a complete machine-readable copy of the corresponding source code, to be distributed under the terms of Sections 1 and 2 above on a medium customarily used for software interchange; or,

c) Accompany it with the information you received as to the offer to distribute corresponding source code. (This alternative is allowed only for noncommercial distribution and only if you received the program in object code or executable form with such an offer, in accord with Subsection b above.)

The source code for a work means the preferred form of the work for making modifications to it. For an executable work, complete source code means all the source code for all modules it contains, plus any associated interface definition files, plus the scripts used to control compilation and installation of the executable. However, as a special exception, the source code distributed need not include anything that is normally distributed (in either source or binary form) with the major components (compiler, kernel, and so on) of the operating system on which the executable runs, unless that component itself accompanies the executable.

If distribution of executable or object code is made by offering access to copy from a designated place, then offering equivalent access to copy the source code from the same place counts as distribution of the source code, even though third parties are not compelled to copy the source along with the object code.

4. You may not copy, modify, sublicense, or distribute the Program except as expressly provided under this License. Any attempt otherwise to copy, modify, sublicense or distribute the Program is void, and will automatically terminate your rights under this License. However, parties who have received copies, or rights, from you under this License will not have their licenses terminated so long as such parties remain in full compliance.

5. You are not required to accept this License, since you have not signed it. However, nothing else grants you permission to modify or distribute the Program or its derivative works. These actions are prohibited by law if you do not accept this License. Therefore, by modifying or distributing the Program (or any work based on the Program), you indicate your acceptance of this License to do so, and all its terms and conditions for copying, distributing or modifying the Program or works based on it.

6. Each time you redistribute the Program (or any work based on the Program), the recipient automatically receives a license from the original licensor to copy, distribute or modify the Program subject to these terms and conditions. You may not impose any further restrictions on the recipients' exercise of the rights granted herein. You are not responsible for enforcing compliance by third parties to this License.

7. If, as a consequence of a court judgment or allegation of patent infringement or for any other reason (not limited to patent issues), conditions are imposed on you (whether by court order, agreement or otherwise) that contradict the conditions of this License, they do not excuse you from the conditions of this License. If you cannot distribute so as to satisfy simultaneously your obligations under this License and any other pertinent obligations, then as a consequence you may not distribute the Program at all. For example, if a patent license would not permit royalty-free redistribution of the Program by all those who receive copies directly or indirectly through you, then the only way you could satisfy both it and this License would be to refrain entirely from distribution of the Program.

If any portion of this section is held invalid or unenforceable under any particular circumstance, the balance of the section is intended to apply and the section as a whole is intended to apply in other circumstances.

It is not the purpose of this section to induce you to infringe any patents or other property right claims or to contest validity of any such claims; this section has the sole purpose of protecting the integrity of the free software distribution system, which is implemented by public license practices. Many people have made generous contributions to the wide range of software distributed through that system in reliance on consistent application of that system; it is up to the author/donor to decide if he or she is willing to distribute software through any other system and a licensee cannot impose that choice.

This section is intended to make thoroughly clear what is believed to be a consequence of the rest of this License.

8. If the distribution and/or use of the Program is restricted in certain countries either by patents or by copyrighted interfaces, the original copyright holder who places the Program under this License may add an explicit geographical distribution limitation excluding those

countries, so that distribution is permitted only in or among countries not thus excluded. In such case, this License incorporates the limitation as if written in the body of this License.

9. The Free Software Foundation may publish revised and/or new versions of the General Public License from time to time. Such new versions will be similar in spirit to the present version, but may differ in detail to address new problems or concerns.

Each version is given a distinguishing version number. If the Program specifies a version number of this License which applies to it and "any later version", you have the option of following the terms and conditions either of that version or of any later version published by the Free Software Foundation. If the Program does not specify a version number of this License, you may choose any version ever published by the Free Software Foundation.

10. If you wish to incorporate parts of the Program into other free programs whose distribution conditions are different, write to the author to ask for permission. For software which is copyrighted by the Free Software Foundation, write to the Free Software Foundation; we sometimes make exceptions for this. Our decision will be guided by the two goals of preserving the free status of all derivatives of our free software and of promoting the sharing and reuse of software generally.

NO WARRANTY

11. BECAUSE THE PROGRAM IS LICENSED FREE OF CHARGE, THERE IS NO WARRANTY FOR THE PROGRAM, TO THE EXTENT PERMITTED BY APPLICABLE LAW. EXCEPT WHEN OTHERWISE STATED IN WRITING THE COPYRIGHT HOLDERS AND/OR OTHER PARTIES PROVIDE THE PROGRAM "AS IS" WITHOUT WARRANTY OF ANY KIND, EITHER EXPRESSED OR IMPLIED, INCLUDING, BUT NOT LIMITED TO, THE IMPLIED WARRANTIES OF MERCHANTABILITY AND FITNESS FOR A PARTICULAR PURPOSE. THE ENTIRE RISK AS TO THE QUALITY AND PERFORMANCE OF THE PROGRAM IS WITH YOU. SHOULD THE PROGRAM PROVE DEFECTIVE, YOU ASSUME THE COST OF ALL NECESSARY SERVICING,

REPAIR OR CORRECTION.

12. IN NO EVENT UNLESS REQUIRED BY APPLICABLE LAW OR AGREED TO IN WRITING WILL ANY COPYRIGHT HOLDER, OR ANY OTHER PARTY WHO MAY MODIFY AND/OR REDISTRIBUTE THE PROGRAM AS PERMITTED ABOVE, BE LIABLE TO YOU FOR DAMAGES, INCLUDING ANY GENERAL, SPECIAL, INCIDENTAL OR CONSEQUENTIAL DAMAGES ARISING OUT OF THE USE OR INABILITY TO USE THE PROGRAM (INCLUDING BUT NOT LIMITED TO LOSS OF DATA OR DATA BEING RENDERED INACCURATE OR LOSSES SUSTAINED BY YOU OR THIRD PARTIES OR A FAILURE OF THE PROGRAM TO OPERATE WITH ANY OTHER PROGRAMS), EVEN IF SUCH HOLDER OR OTHER PARTY HAS BEEN ADVISED OF THE POSSIBILITY OF SUCH DAMAGES.

END OF TERMS AND CONDITIONS

EC Declaration of Conformity

For the following equipment:

*Type of Product : 2-Bay SATA NAS RAID Server
*Model Number : NAS-7200

* Produced by:

Manufacturer's Name : **Planet Technology Corp.**
Manufacturer's Address : 11F, No. 96, Min Chuan Road, Hsin Tien,
Taipei, Taiwan, R.O.C.

is herewith confirmed to comply with the requirements set out in the Council Directive on the Approximation of the Laws of the Member States relating to Electromagnetic Compatibility (89/336/EEC, 92/31/EEC, 93/68/EEC).

For the evaluation regarding the Electromagnetic Compatibility, the following standards were applied:

EN 55022	(2006, Class B)
CISPR 22	(2005, Class B)
EN 61000-3-2	(2000 + A2: 2005)
EN 61000-3-3	(1995+A1: 2001 + A2: 2005)
EN 55024	(1998+A1: 2001+A2: 2003)
IEC 61000-4-2	(1995 + A1: 1998 + A2: 2000)
IEC 61000-4-3	(2002+A1: 2002)
IEC 61000-4-4	(2004)
IEC 61000-4-5	(1995 + A1: 2000)
IEC 61000-4-6	(2003+A1: 2004)
IEC 61000-4-8	(1993 + A1: 2000)
IEC 61000-4-11	(2004)

Responsible for marking this declaration if the:

Manufacturer **Authorized representative established within the EU**

Authorized representative established within the EU (if applicable):

Company Name: **Planet Technology Corp.**

Company Address: **11F, No.96, Min Chuan Road, Hsin Tien, Taipei, Taiwan, R.O.C**

Person responsible for making this declaration

Name, Surname **John Sung**

Position / Title : **Product Manager**

Taiwan
Place

30 July, 2008
Date


Legal Signature

PLANET TECHNOLOGY CORPORATION

e-mail: sales@planet.com.tw http://www.planet.com.tw

11F, No. 96, Min Chuan Road, Hsin Tien, Taipei, Taiwan, R.O.C. Tel:886-2-2219-9518 Fax:886-2-2219-9528

Downloaded from www.SoftManuals.com. All Manuals Search And Download.

Free Manuals Download Website

<http://myh66.com>

<http://usermanuals.us>

<http://www.somanuals.com>

<http://www.4manuals.cc>

<http://www.manual-lib.com>

<http://www.404manual.com>

<http://www.luxmanual.com>

<http://aubethermostatmanual.com>

Golf course search by state

<http://golfingnear.com>

Email search by domain

<http://emailbydomain.com>

Auto manuals search

<http://auto.somanuals.com>

TV manuals search

<http://tv.somanuals.com>