

8-Port 10/100Mbps + 1-Port Gigabit TP/SFP Combo Managed Switch



Cost-effective Desktop Size / Fiber Capability / Group Managed Switch

The PLANET WGSD-910 is a Desktop size L2 Managed Fast Ethernet Switch. It provides 8 10/100Mbps Fast Ethernet ports and 1 Gigabit TP/SFP interface. The Compact-size design not only makes the Desktop Switch fit into space-limited environment but also is mountable in a 19-inch rack with attached rack-mounting kits. The equipped Gigabit SFP slot makes it with capability of fiber link for distance extending and can handle extremely large amounts of data in a secured topology which is linked to a backbone or high capacity servers.

The various support of QoS mode and VLAN features make the WGSD-910 meet the needs of effective data traffic control for SOHOs, SMBs and Enterprises, such as VoIP, video streaming and multicast applications. The key features are shown as below:

- IP Stacking up to 8 units
- Rapid Spanning Tree
- IGMP Snooping
- 802.1Q VLAN
- SNMP / SNMP Trap
- SFP slots, Fiber link capability

Enhanced Layer 2 Features

The WGSD-910 can be programmed for basic switch management functions, such as per port speed configuration, Port Trunking, VLAN, Rapid Spanning Tree, QoS, bandwidth control and IGMP Snooping. The WGSD-910 provides Port-based VLAN, 802.1Q Tagged VLAN. And the VLAN groups allowed on the WGSD-910 will be maximally up to 255. Via supporting port trunking, the WGSD-910 offers the operation of a high-speed trunk combining multiple ports. It also provides four groups of up to 8 ports for trunking and supports fail-over as well.

Efficient Management – Stacking Management

For efficient management, the WGSD-910 is equipped with console interface, Web interface and SNMP agent. With its built-in Web-based management, the PLANET WGSD-910 offers an easy-to-use, platform-independent management and configuration facility. It supports standard Simple Network Management Protocol (SNMP) and can be managed via any standard-based management software. For text-based management, the WGSD-910 can also be accessed via Telnet and the console port.

One of the management features of WGSD-910 is the IP Stacking function support. It helps network managers to easily configure up to 8 switches in the same series via one single IP address instead of connecting and setting each unit one by one.

KEY FEATURES

PHYSICAL PORT

- 8-Port 10/100Base-TX RJ-45

1-PORT GIGABIT TP/SFP COMBO INTERFACE LAYER 2 FEATURES

- Complies with the IEEE 802.3, IEEE 802.3u, IEEE 802.3ab, IEEE 802.3z Gigabit Ethernet standard
- Auto-negotiation and half duplex/full duplex modes for all 10Base-T/100Base-TX and 1000Base-T ports.
- High performance of Store-and-Forward architecture, broadcast storm control and runt/CRC filtering eliminate erroneous packets to optimize the network bandwidth
- IEEE 802.1Q Tagged based VLAN and Port-based VLAN
- Up to 4 Trunk groups, each trunk can be up to maximum 8 port with 1.6Gbps bandwidth(Duplex Mode)
- IEEE 802.1d, IEEE 802.1w, classic Spanning Tree Algorithm or Rapid Spanning Tree support

QUALITY OF SERVICE

- 4 priority queues on all switch ports.
- Strict priority and Weighted Round Robin (WRR) CoS policies
- QoS and bandwidth control on each port

MULTICAST

- IGMP Snooping v1 and v2
- IGMP Port and Group policy

SECURITY

- IEEE 802.1x Port-Based Authentication, RADIUS server authentication or Local account authentication
- MAC address Filtering and MAC address Binding
- Port Mirroring to monitor the incoming or outgoing traffic on a particular port

MANAGEMENT

- WEB-based, Telnet, Console Command Line management
- Access through SNMP v1 and v2c set and get requests.
- Four groups (history, statistics, alarms, and events) of embedded remote monitoring (RMON) agents for network monitoring and traffic analysis
- EMI standards comply with FCC, CE class

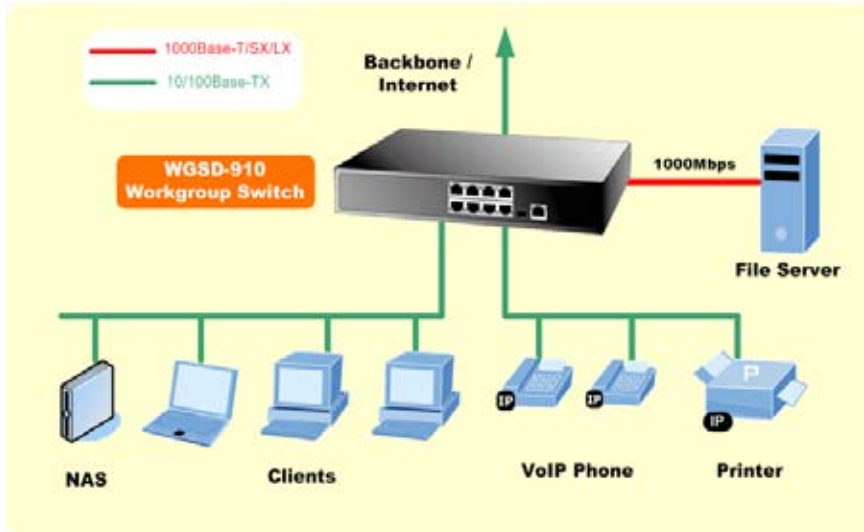
SPECIFICATION

Product	8-Port 10/100Mbps + 1-Port Gigabit TP/SFP Managed Ethernet Switch
Model	WGSD-910
Hardware Specification	
Copper Ports	8 10/ 100Base-TX RJ-45 Auto-MDI/MDI-X ports 1 10/100/1000Base-T RJ-45 port
SFP/mini-GBIC Slots	1 SFP interface, shared with Port-9
Switch Architecture	Store-and-Forward
Switch Fabric	3.6Gbps / non-blocking
Switch Throughput	2.67Mpps
Address Table	8K entries
Share Data Buffer	1Mbit
Maximum Frame Size	1522 Bytes packet
Flow Control	Back pressure for half duplex, IEEE 802.3x Pause Frame for full duplex
LED	Power, Link/Act and speed per port
Console Interface	One RS-232 DB-9 male connector for switch management
Dimensions	280 x 173 x 44mm (W x D x H), 1U height
Weight	1.24 kg
Layer 2 function	
Management Interface	Console, Telnet, Web Browser, SNMP v1 and v2c Port disable/enable.
Port Configuration	Auto-negotiation 10/100Mbps full and half duplex mode selection. Flow Control disable / enable. Bandwidth control on each port.
Port Status	Display each port speed duplex mode, link status, Flow control status. Auto-negotiation status
VLAN	Port-based VLAN, up to 9 VLAN groups IEEE 802.1Q Tagged Based VLAN , 4K VLAN ID, up to 255 VLAN groups
Spanning Tree	IEEE 802.1d, IEEE 802.1w
Link Aggregation	Supports 4 groups of 8-Port trunk 4 priority queues.
QoS	Traffic classification based on Port Number, 802.1p priority, DS/TOS field in IP Packet v1 and v2
IGMP Snooping	IGMP Port/Group Policy and Static Routing Port setting
Bandwidth Control	Per port bandwidth control Ingress: 500Kb~80Mbps Egress: 64Kb~80Mbps
Port Mirror	Both
Security	MAC filtering and Binding, up to 400 rules RFC-1213 MIB-II RFC-2863 Interface MIB
SNMP MIBs	RFC-1493 Bridge MIB RFC-2674 Extended Bridge MIB (Q-Bridge) RFC-2819 RMON MIB (Group 1, 2, 3 and 9)
Standards Conformance	
Regulation Compliance	FCC Part 15 Class A, CE
Standards Compliance	IEEE 802.3 10Base-T IEEE 802.3u 100Base-TX/100Base-FX IEEE 802.3z Gigabit SX/LX IEEE 802.3ab Gigabit 1000Base-T IEEE 802.3x Flow Control and Back pressure IEEE 802.1d Spanning tree protocol IEEE 802.1w Rapid spanning tree protocol IEEE 802.1p Class of service IEEE 802.1Q VLAN Tagging IEEE 802.1x Port Authentication Network Control
Network Media	10Base-T – UTP/STP category 3, 4 or 5 cable 100Base-TX – UTP/STP category 5 cable 1000Base-T – UTP/STP category 5e/6 cable 1000Base-SX – • 62.5/125µm multi-mode fiber optic cable, up to 220m • 50/125µm multi-mode fiber optic cable, up to 550m 1000Base-LX – 9/125µm single-mode fiber optic cable, up to 120km (Vary on SFP Module)
Environment Specifications	
Operating	Temperature: 0°C ~ 50 degree C Relative Humidity: 20% ~90% (non-condensing)
Storage	Temperature: -40°C ~ 70 degree C Relative Humidity: 20% ~ 90% (non-condensing)

APPLICATIONS

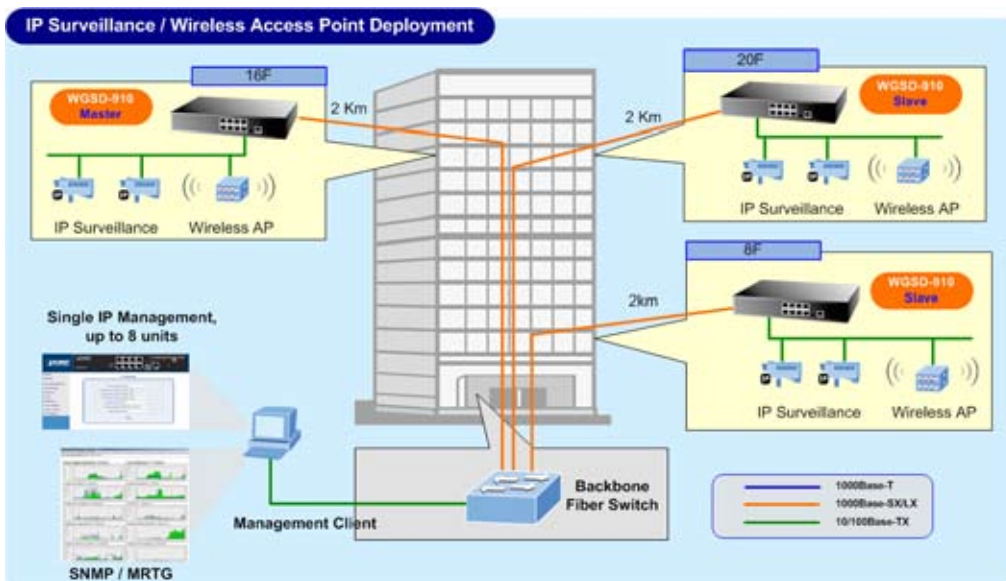
Workgroup Switch

With 8 10/100Mbps copper ports and 1 Gigabit-Ethernet fiber port, the WGSD-910 provides a cost-effective and high-performance solution for power users.



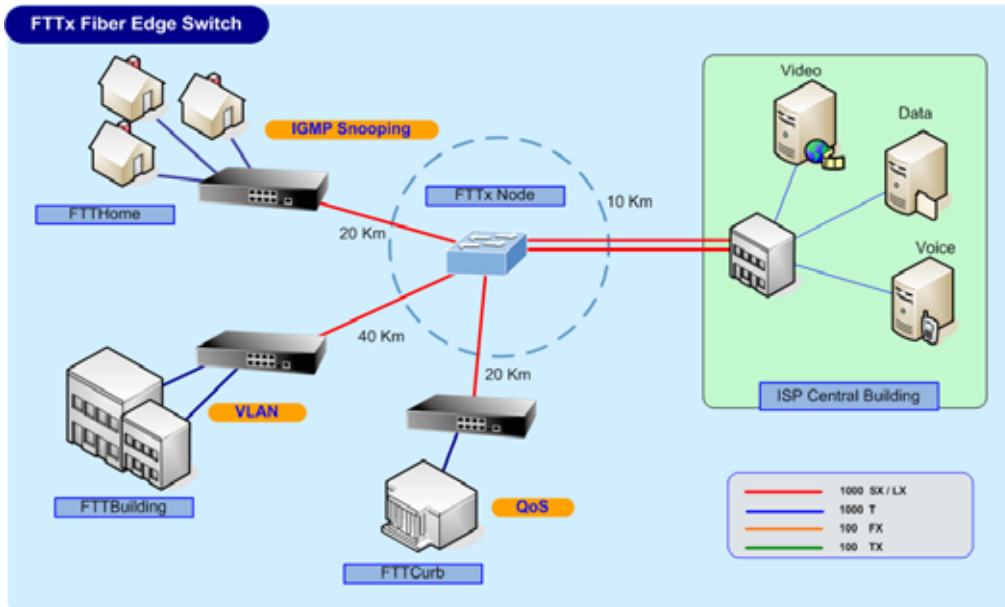
Department Switch

With non-blocking switch fabric 3.6 Gigabits per second, the WGSD-910 can easily provide a local and high bandwidth and Fast Ethernet network for backbone of departments. With the SFP port, the WGSD-910 provides the uplink to the backbone network through Gigabit Ethernet LX/SX SFP mini-GBIC modules. The high backplane simplifies the tasks of upgrading the LAN for catering the increasing bandwidth demands.



FTTx Edge Switch

With the mini-GBIC 1000Base-SX/LX SFP (Small-Form Factor Pluggable) interface, the deploy distance of WGSD-910, a high-performance edge device for FTTx solutions, can be extended from 550 meters (Multi-mode fiber) up to above 10/50/70/120 kilometers (Single-mode fiber). To build a network solution of FTTH (Fiber to the Home) or FTTC (Fiber to the Curb) for ISPs and FTTB (Fiber to the Building) for enterprises, the various distances of SFP (Small-Form Factor Pluggable) and Bidi (WDM) transceivers are optional for customers. For security and applications, the 8 copper ports can be configured with VLAN settings and connect to different units, offices, houses and departments.



ORDERING INFORMATION

WGSD-910	8-Port 10/100Mbps + 1 Gigabit TP/SFP Combo Managed Switch
----------	---

AVAILABLE MODULES FOR WGSD-910

MGB-GT	SFP-Port 1000Base-T Module
MGB-SX	SFP-Port 1000Base-SX mini-GBIC module
MGB-LX	SFP-Port 1000Base-LX mini-GBIC module
MGB-L30	SFP-Port 1000Base-LX mini-GBIC module-30km
MGB-L50	SFP-Port 1000Base-LX mini-GBIC module-50km
MGB-L70	SFP-Port 1000Base-LX mini-GBIC module-70km
MGB-L120	SFP-Port 1000Base-LX mini-GBIC module-120km
MGB-LA10	SFP-Port 1000Base-LX (WDM, TX:1310nm) mini-GBIC module-10km
MGB-LB10	SFP-Port 1000Base-LX (WDM, TX:1550nm) mini-GBIC module-10km
MGB-LA20	SFP-Port 1000Base-LX (WDM, TX:1310nm) mini-GBIC module-20km
MGB-LB20	SFP-Port 1000Base-LX (WDM, TX:1550nm) mini-GBIC module-20km
MGB-LA40	SFP-Port 1000Base-LX (WDM, TX:1310nm) mini-GBIC module-40km
MGB-LB40	SFP-Port 1000Base-LX (WDM, TX:1550nm) mini-GBIC module-40km

RELATIVE PRODUCTS (IP STACKING SERIES)

WSD-800	8-Port 10/100Mbps Managed Switch
WSW-2401A	24-Port 10/100Mbps + 1 Open Slot Managed Switch
WGSW-2840	24-Port 10/100Mbps + 4-Port Gigabit TP/SFP Combo Managed Switch
WGSW-5240	48-Port 10/100Mbps + 4-Port Gigabit TP/SFP Combo Managed Switch

Free Manuals Download Website

<http://myh66.com>

<http://usermanuals.us>

<http://www.somanuals.com>

<http://www.4manuals.cc>

<http://www.manual-lib.com>

<http://www.404manual.com>

<http://www.luxmanual.com>

<http://aubethermostatmanual.com>

Golf course search by state

<http://golfingnear.com>

Email search by domain

<http://emailbydomain.com>

Auto manuals search

<http://auto.somanuals.com>

TV manuals search

<http://tv.somanuals.com>