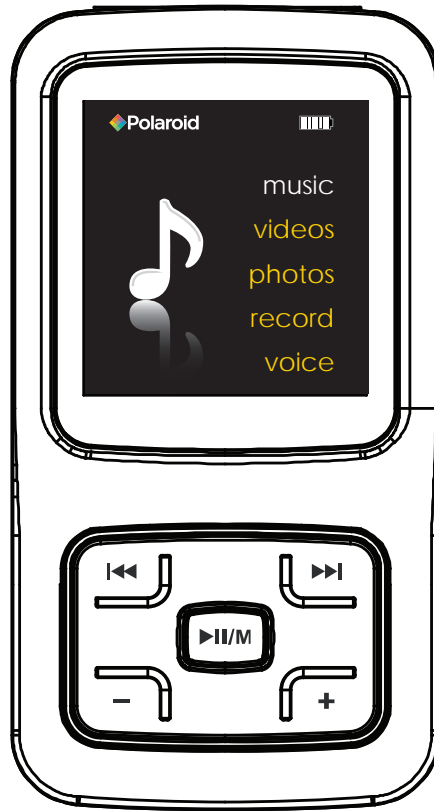


2GB

Music & Video Player with 1.5" LCD Display

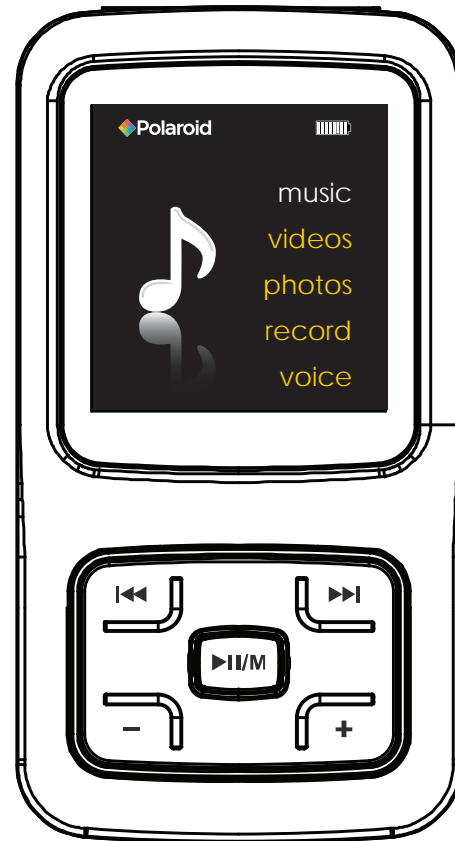
PMP150/151



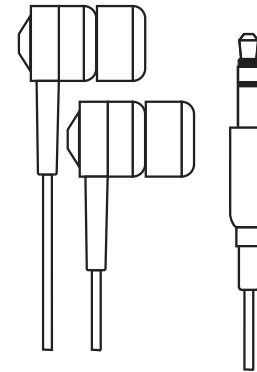
User Guide

In the box

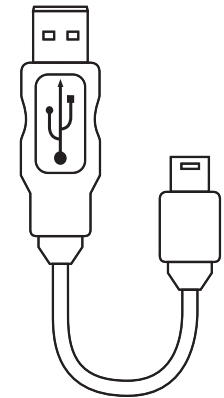
- MP3 Player
- Headphones
- USB 2.0 Cable
- Quick Start Guide
- Applications CD



MP3 Player



Headphones



USB Cable



Quick Start Guide

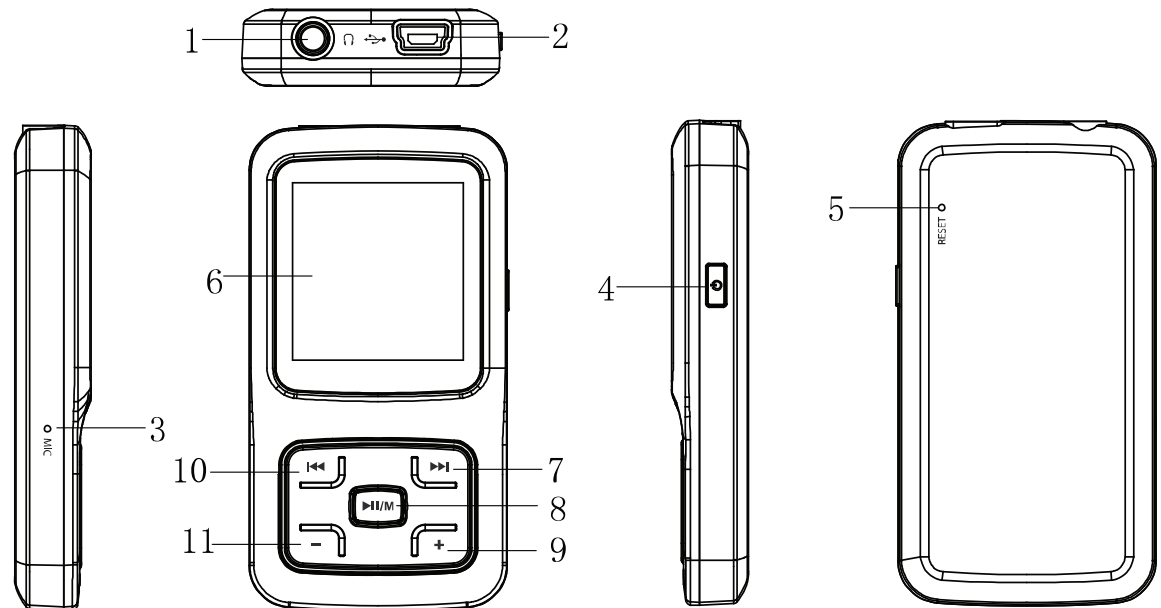


Applications CD

Features & Location of controls

- 2 GB internal memory
- High resolution 1.5" LCD display
- Stores & plays music, video, and pictures
- Digital voice recording
- Stores & plays music, video, and pictures
- Rechargeable Li-ion battery

1. Headphone jack
2. USB cable connection port
3. Microphone
4. [⏻] - Power on/off
5. Reset hole
6. Screen display
7. [▶▶] - Next; Fast Forward
8. [⏮/M] - Enter main menu/Select/Return to previous menu/Open sub-menu; Play/Pause/Stop/Confirm; Unlock buttons
9. [+] - Volume up
10. [◀◀] - Previous; Fast Rewind
11. [-] - Volume down



Basic Operation

Turning on/off:

Make sure your MP3 player is fully charged before turning it on.

- To turn the player on, press and hold the [⏻] button until the display turns on.
- To turn the player off, press and hold the [⏻] button until the display turns off.

Selecting main menu or mode:

The MP3 player has different modes.

- Press and hold the [▶||/M] button for approximately 1 second to open the main menu.
- Use the [◀◀] or [▶▶] button to select an item and press the [▶||/M] button to confirm your selection.

Play/Pause:

The [▶||/M] button plays/pauses the music/video/slideshow.

Adjusting the volume:

- To increase the volume, press the [+] key.
- To decrease the volume, press the [-] key.

Lock/unlock function:

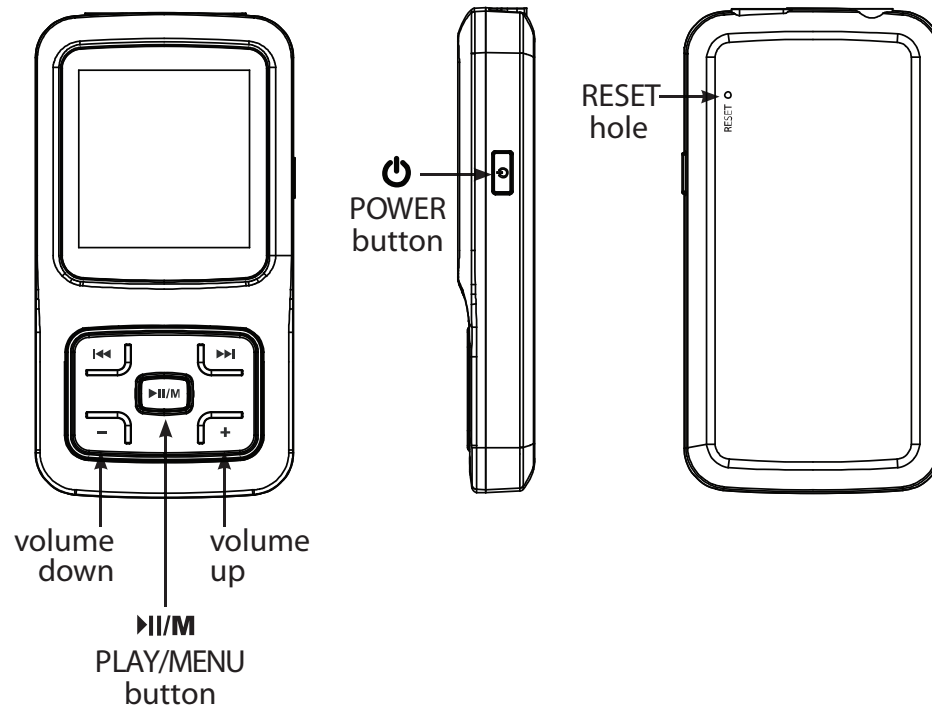
All buttons of the player will be locked after certain amount of inactivity (you can set the time in setup menu). This prevents you from accidentally pressing the buttons while using the MP3 player on the move.

- Press and hold the [▶||/M] button to unlock all buttons.

Resetting the Player:

If the MP3 Player malfunctions, you can use the Reset function to restart it.

- To reset the Player, take a metal pin (such as the end of a paperclip), and push it into the RESET hole to restart the Player.



Connecting to a computer

- System requirements:
- Pentium 200 MHz or above
- Microsoft Windows 2000/ME/XP/Vista
- USB port

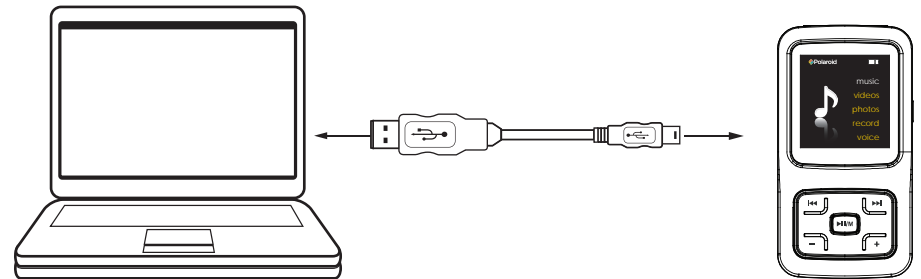
PC connection:

In order to enjoy the multimedia capabilities of your MP3 Player, you have to first copy files from your PC to its internal memory. Connect your MP3 Player to the computer using the included USB 2.0 cable. The device will be detected automatically without installing any driver. Once detected, you can read/write to the device's memory just as if you were using a regular disk drive.

Make sure your computer is powered on, and follow the steps below to connect the player to your computer.

1. Plug the larger USB connector of the USB cable into the USB port on the computer.
2. Plug the other end (small) of the USB cable to the player.
3. The computer system detects "New hardware" and starts to install the driver automatically. Wait for the system to finish the installation.

When it has finished, "MP3" will be created in "My Computer."



Disconnecting the USB cable:


1. Open the "Safe Device Removal" icon in the task bar, on the lower right corner of the screen.
2. Select "USB Device" and click "Stop."
3. When the notification that "It is now safe to disconnect your device," disconnect the USB cable from your computer.

Important: to avoid any data loss, always perform a safe USB device extraction before disconnecting the USB cable.

Charging the battery

Your MP3 Player has an integrated rechargeable Li-ion battery. It is recommended to fully charge the player before using it for the first time. Recharge the battery by connecting the player to a computer using the included USB 2.0 cable. Charging time is between 3-5 hours, depending if the player is powered off or working. To keep the battery in good condition, we recommend not charging it for more than 8 hours.

Battery level indication:

 - indicates that the battery is full

 - indicates low battery, and the player should be recharged as soon as possible

Important:

- Fully charge the player before using it for the first time
- Charge the player immediately when the "Low Battery" message is displayed
- Do not overcharge or completely drain the battery. Overcharging or completely draining the battery will shorten battery life
- The battery can be drained if the player is not used for a long time. To avoid draining the battery, fully charge the player every three months, and always keep the battery charge above 50%.

Transferring media to the player

Your MP3 Player is capable of storing and playing your favorite music, photos and video.

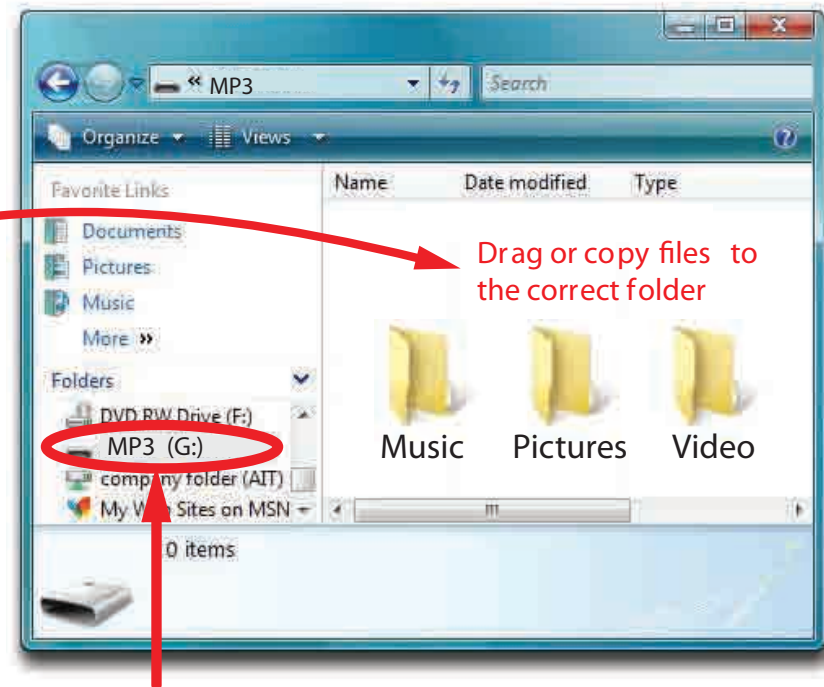
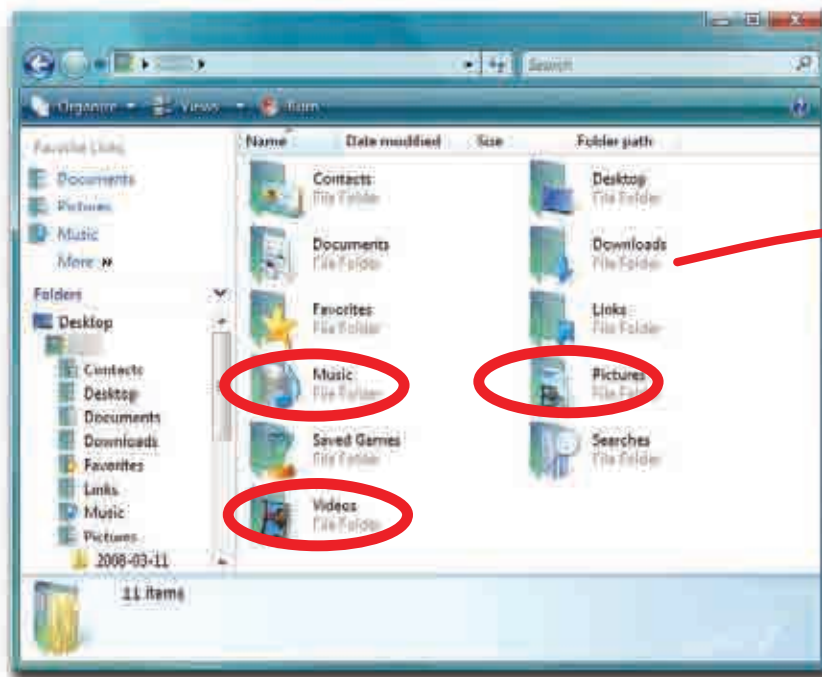
To transfer media from your computer:

1. Connect your MP3 Player to your computer using the included USB cable.
2. Open "Windows Explorer" or "My Computer," and locate "MP3."
3. Drag and drop, or copy and paste your media files into "MP3."

When you are done, disconnect your MP3 Player from the computer using the "Safe Device Removal" utility in the taskbar.

Important:

do not disconnect the USB cable when transferring *files*, as doing so may damage your MP3 Player and your *files*.



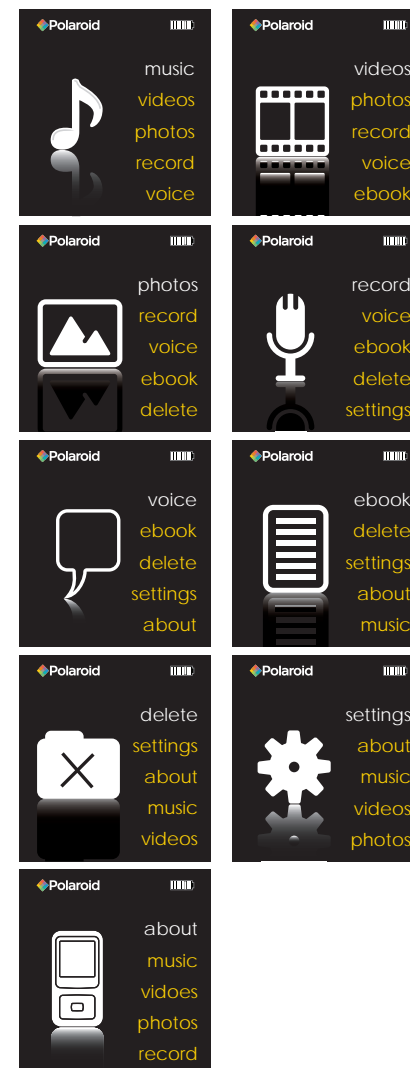
Drag or copy files to the correct folder

Locate "MP3"

Main Menu

To access the main menu, press and hold the [M/II] button. Use the [◀] or [▶] button to select an item and press the [M/II] button to confirm selections. All available options are listed in the main menu table below.

Music	Music playback		
Video	Video playback		
Photos	Photo playback		
Record	Voice recording		
Voice	Voice playback		
E-BOOK	Text view		
Delete	Delete files and folders		
Settings	Language	English German Italian Spanish French Dutch Portuguese	
	Play Mode	Normal Repeat One Repeat All Random & Repeat	
	Record Settings	8000Hz 11025Hz 16000Hz 22050Hz 32000Hz 44100Hz	
	Contrast		
	Timer Off	Stop off:	15s 30s 1m 2m 5m 10m 30m Disable
		Sleep Off:	10m 15m 30m 60m 90m 2h 3h Disable
Backlight Off:		1m 5m 10m 30m 60m Always on	
Reset	Yes No		
About	Software version, total and free memory of the player		



Music

- Press and hold the [POWER] button to turn on the player. The MP3 Player enters the main menu with Music option selected by default.
- Press the [PLAY/PAUSE] button to enter the Music mode.
- Press the [PLAY/PAUSE] button to start playing the music.

Display

- | | |
|--------------------------------------|-------------------------------------|
| 1. Remaining battery power indicator | 8. Audio frequency |
| 2. Music indicator | 9. Current track/Total track number |
| 3. Repeat mode indicator | 10. EQ mode indicator |
| 4. Key locked indicator | 11. Sample rate |
| 5. Volume indicator | 12. Elapsed time of current track |
| 6. Music format | 13. Total time of current track |
| 7. Play/Pause/Stop/Fast forward | 14. Music name/ID3 tag/Lyrics |

Pausing playback

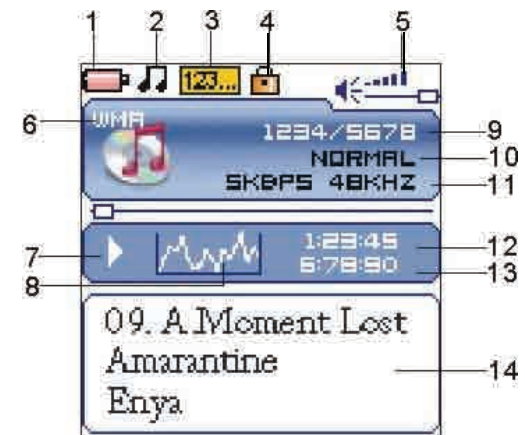
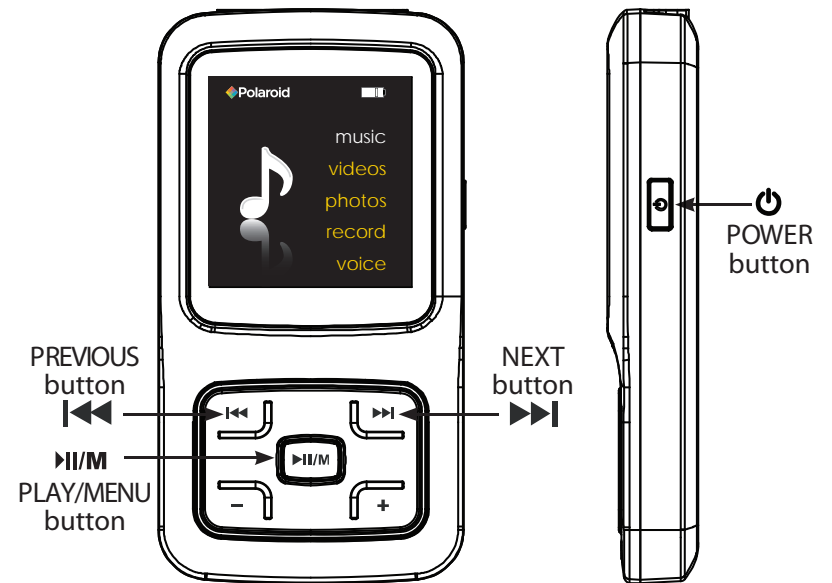
- While a song is playing, press the [PLAY/PAUSE] button to pause the playback.
- To resume the playback, press the [PLAY/PAUSE] button once again.

Skipping tracks

- Press the [PREVIOUS] button to go back to the previous track.
- Press the [NEXT] button to skip to the next track.

Searching backward or forward within a track

- Press and hold the [PREVIOUS] button to search backward within a track.
- Press and hold the [NEXT] button to search forward within a track.
- Once you release the pressed button, the file will be played back from the searched point.

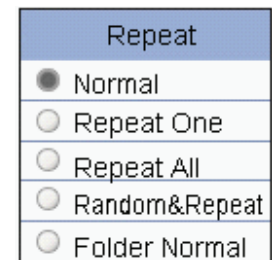
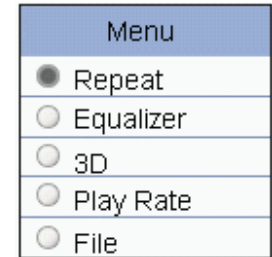


Display

To set play mode

The play mode setting enables you to select a play mode to enjoy the music in a desired order.

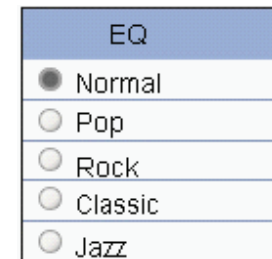
1. Press the **[⏻]** button while listening to music. The music menu appears on the screen.
2. Press the **[⏮]** or **[⏭]** button to select Repeat, and press the **[▶/⏸/⏹]** button. The play mode menu appears on the screen.
3. Use the **[⏮]** or **[⏭]** button to select the desired mode as below and press the **[▶/⏸/⏹]** button to confirm and exit.
 - Normal: Play all saved music files in order once.
 - Repeat One: Play the current or selected file repeatedly.
 - Repeat All: Play all the music files in order repeatedly.
 - Random & Repeat All: Play all the files in random repeatedly.
 - Folder Normal: Play all the files in the current folder in order once.
 - Folder Repeat: Play all the files in the current folder repeatedly.
 - Folder Random: Play all the files in the current folder in random.



To set the equalizer

The equalizer setting enables you to select an equalizer from the six preset equalizer settings to suit the type of audio output, or customize your personal equalizer effect.

1. Press the **[⏻]** button while listening to music. The music menu appears on the screen.
2. Use the **[⏮]** or **[⏭]** button to select Equalizer, and press the **[▶/⏸/⏹]** button. The equalizer menu appears on the screen.
3. Use the **[⏮]** or **[⏭]** button to select the desired equalizer from Normal, Pop, Rock, Classic, Jazz and Ultra Bass. Press the **[▶/⏸/⏹]** button to confirm and exit.



To customize the EQ, select Custom, and press the **[▶/⏸/⏹]** button. The Custom EQ menu appears on the screen.

1. Press the **[⏮]** or **[⏭]** button to navigate between value bars.
2. Use the **[+]** or **[-]** button to adjust the value and press the **[▶/⏸/⏹]** button to confirm.
3. After completing the setting, press the button **[⏻]** to exit.



Using Windows Media Player

Windows Media Player allows you to organize your media collection, as well as create digital music files from your CDs. If Windows Media Player is not installed on your computer, you can get the latest version by going to

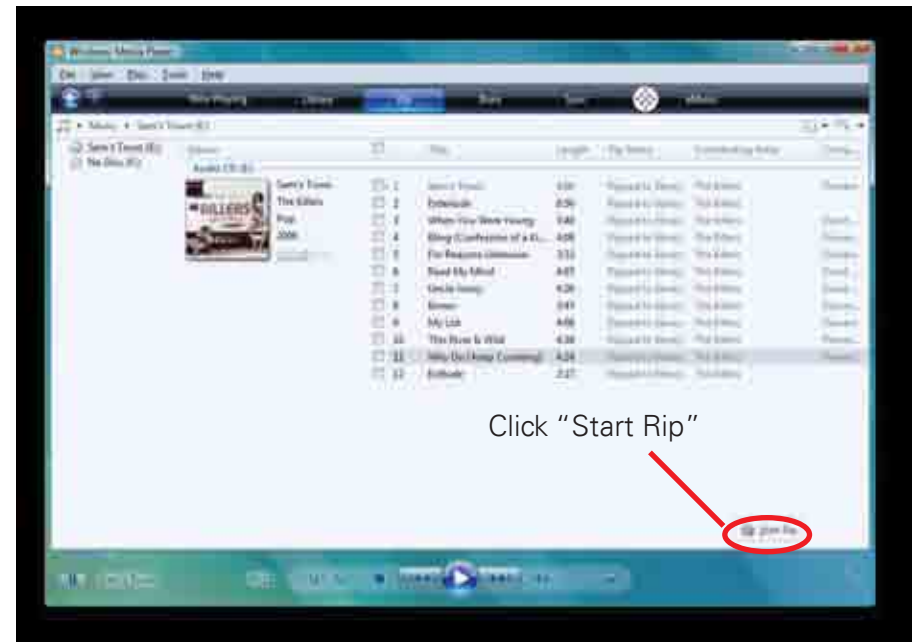
www.microsoft.com/windows/windowsmedia/player/download/

Getting music from your CDs onto your computer:

You can use Windows Media Player to copy, or "Rip", music from your audio CDs.

1. Open Windows Media Player.
2. Click on the "Rip" tab.
3. Insert a music CD into your computer's CD drive.
4. Click the checkboxes to select which tracks to Rip.
5. Click "Start Rip."

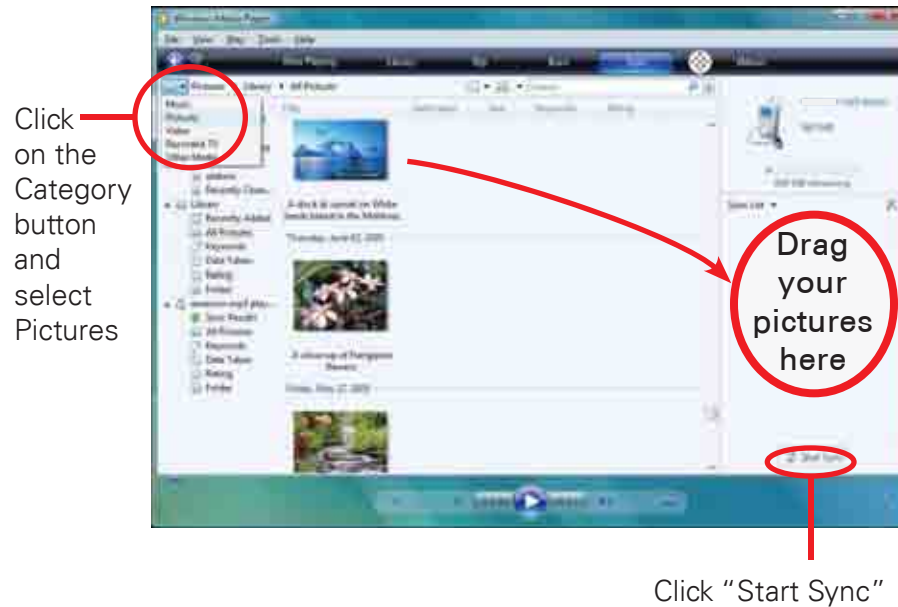
Click the "Rip" tab.



Windows Media Player gives you an easy way to add, or “Sync,” music to your MP3 Player.

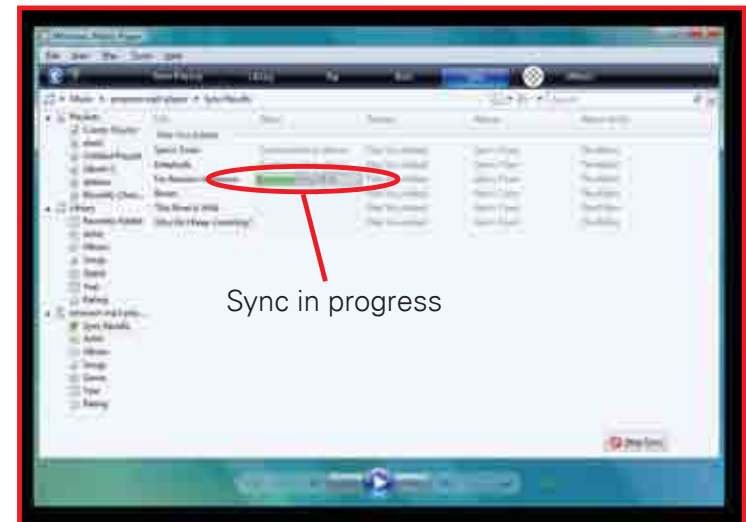
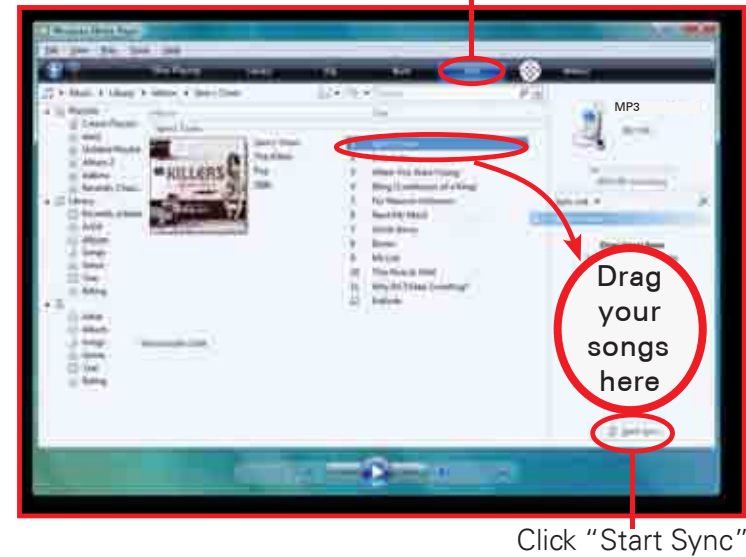
1. Open Windows Media Player.
2. Connect your MP3 Player to the computer using the USB cable.
3. Click on the “Sync” tab in Windows Media Player.
4. Drag media files to your MP3 Player within Windows Media Player.
5. Click the “Start Sync” button.

Sync pictures to your MP3 Player:



You may also transfer music or other media files by dragging/copying them directly into your player.

Click the “Sync” tab.



Video

- To watch video, select "Video" from the Main Menu, using the [◀◀] or [▶▶] button, and press [▶||/M] button.
- Use the [◀◀] or [▶▶] to select a video, and press [▶||/M] button to start playing the selected video.

Pausing playback

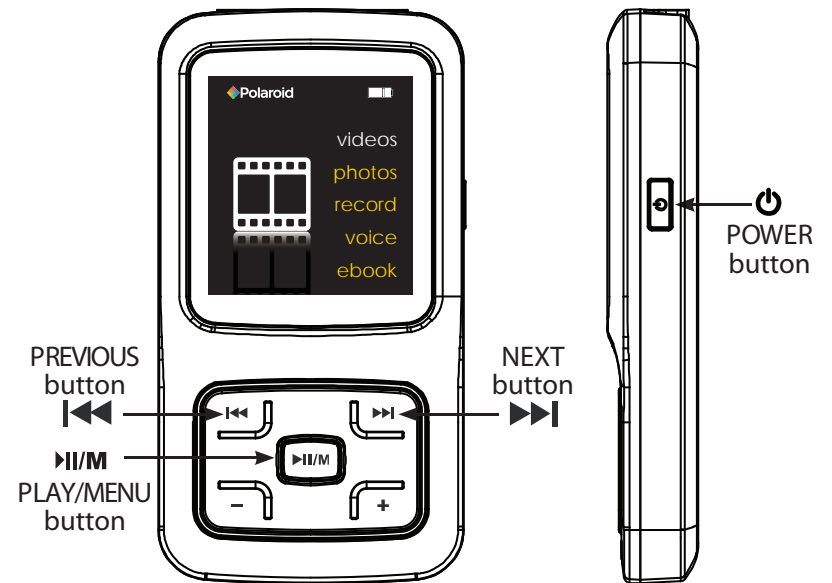
- While a video is playing, press the [▶||/M] button to pause the playback.
- To resume the playback, press the [▶||/M] button once again.
- Press the [⏻] button to stop playback.

Skipping video files

- Press the [◀◀] button to go back to the previous video file.
- Press the [▶▶] button to skip to the next video file.

Searching backward or forward within a video file

- Press and hold the [◀◀] button to search backward within a video file.
- Press and hold the [▶▶] button to search forward within a video file.



Stop mode




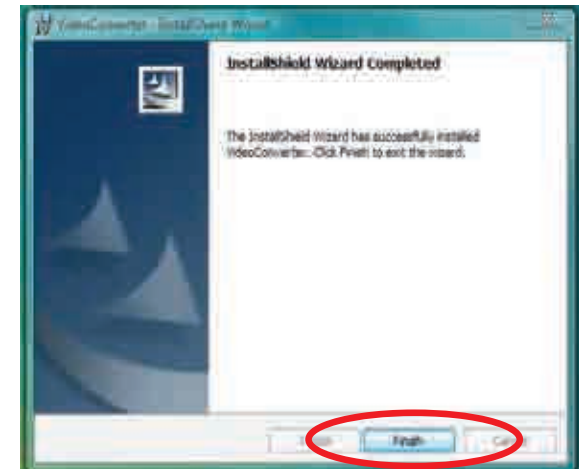
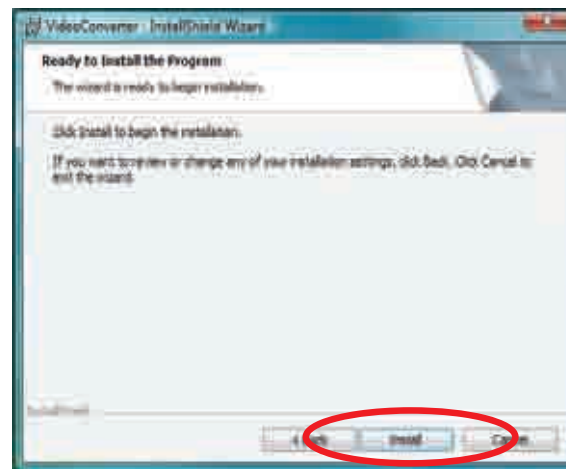
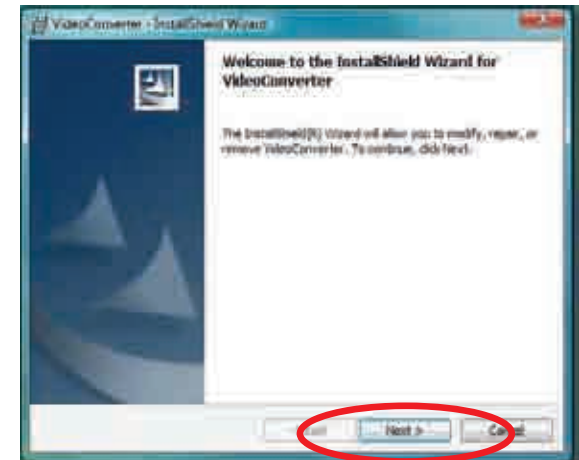
Play mode

Using the Video Converter


Before transferring video files to the MP3 Player, you must convert them to the correct format. Use the Video Converter provided on the included CD to convert most video files to the correct format suitable for the Player.

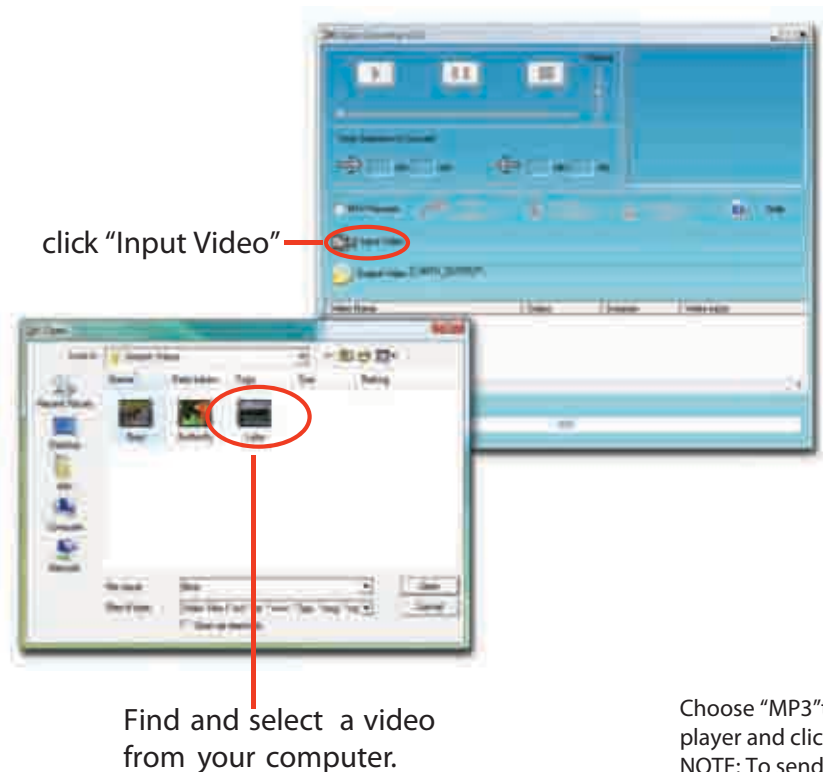
To install the Video Converter:

1. Insert the CD into the CD drive of your computer.
2. Click on "Video Converter" on the screen that opens.
3. Click "Install" and then "Next."
4. Follow the installation instructions.
5. Click "Finish" when the installation is complete.
6. Click the  icon on your "Desktop" to open the Video Converter.

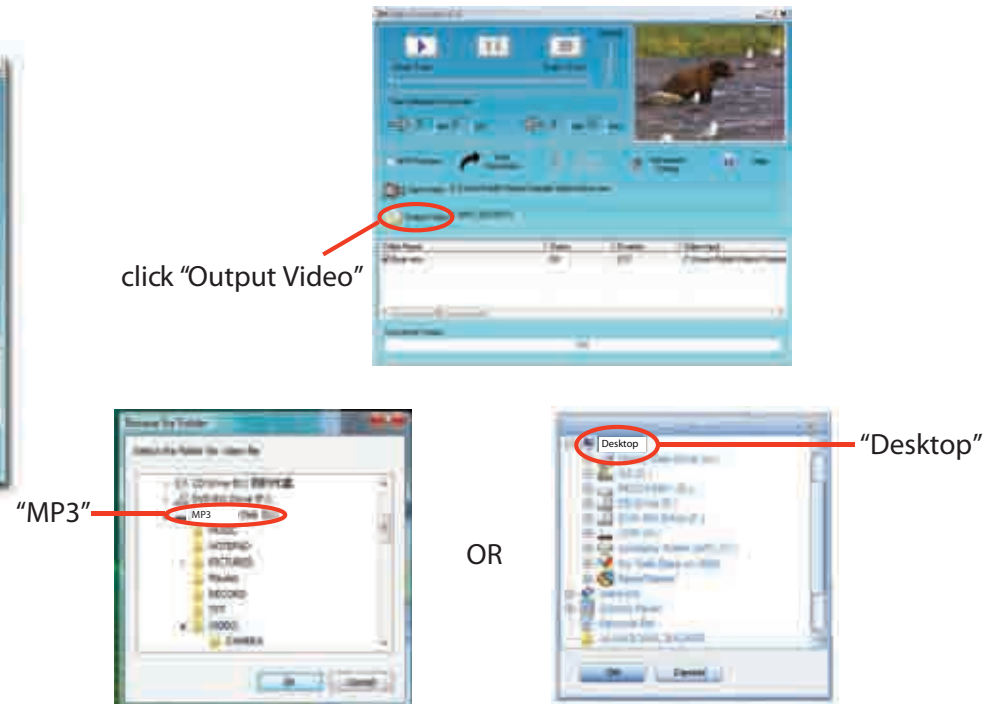


Converting videos:

1. Connect the MP3 Player to the USB port of your computer (optional).
2. Click on the  icon on your Desktop.
3. Click on "Input Video" and select a video to convert.



4. Click on "Output Video" to select the destination for the converted video. You can send it directly to your player by selecting "MP3", and clicking "OK", or if you would like to save the converted video to your computer, we recommend sending it to your "Desktop" where you can easily find the video and transfer it to the player.
NOTE: To send a converted video directly to your player, it must be connected to the computer's USB port at time of conversion.

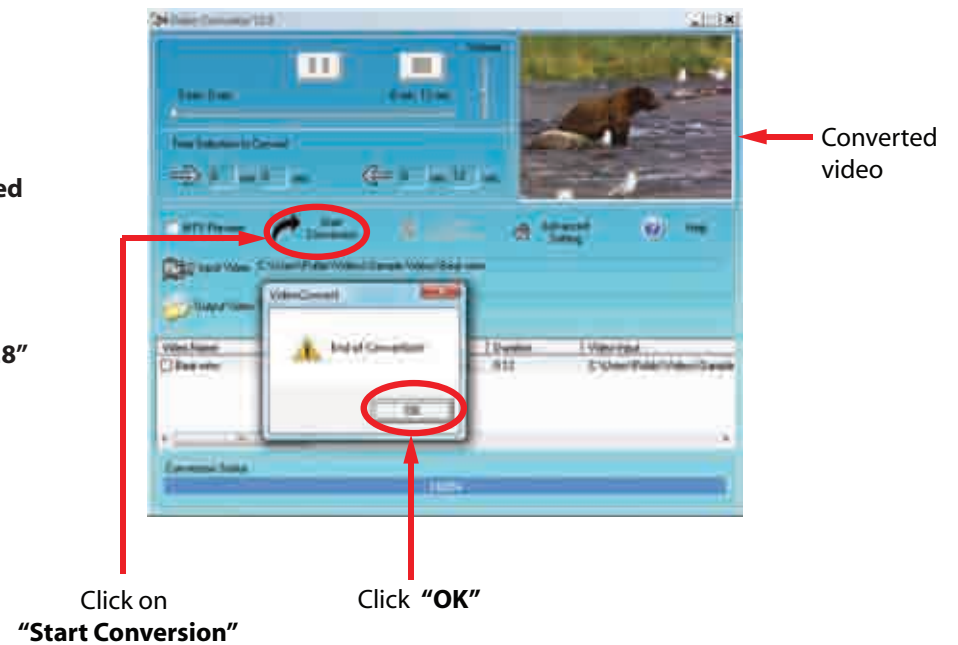
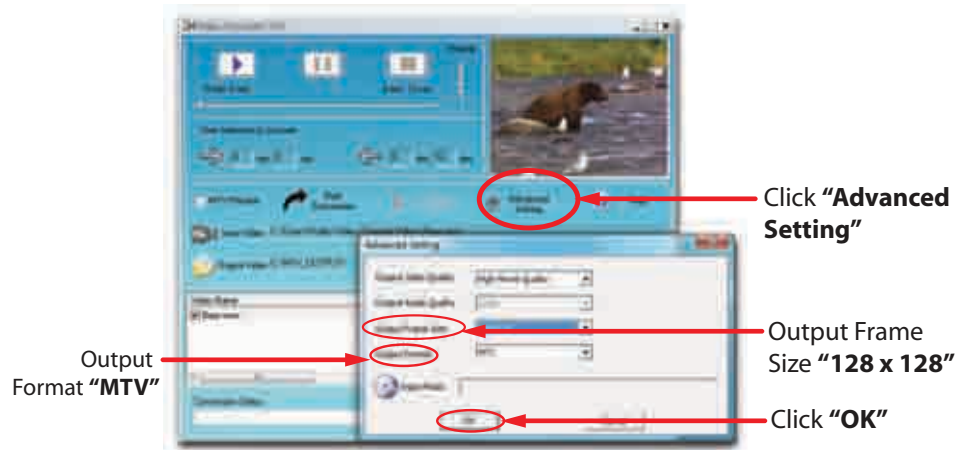


Choose "MP3" to send the converted video directly to your player and click "OK".
NOTE: To send a converted video directly to your player, it must be connected to the computer's USB port at time of conversion.

Choose "Desktop" and save the converted video to the Desktop of your computer. After saving the converted video to your desktop, you can transfer it directly to your Player.

5. Click on "Advanced Setting", and select "128 x 128" as the "Output Frame Size", and select "MTV" as the "Output Format" and then click "OK".

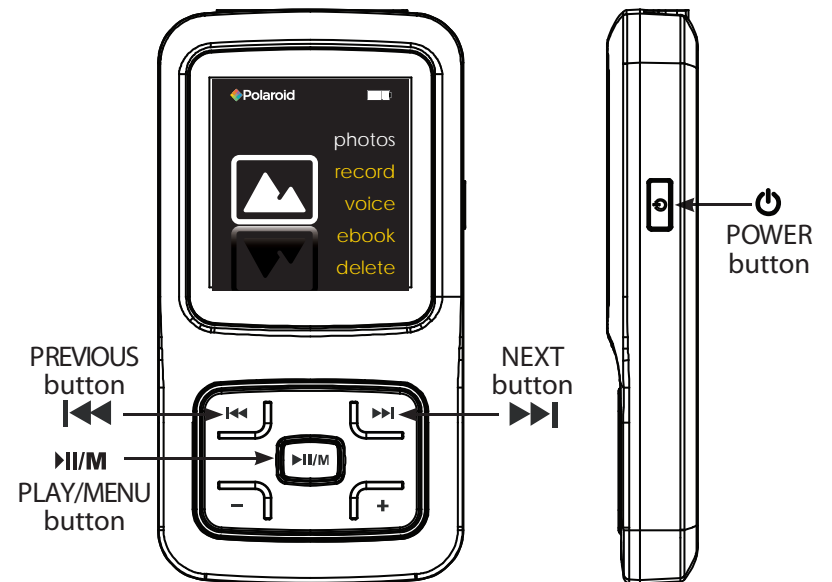
6. Click on "Start Conversion".
7. When the conversion is complete, click "OK".
8. Copy the new MTV file to your player.



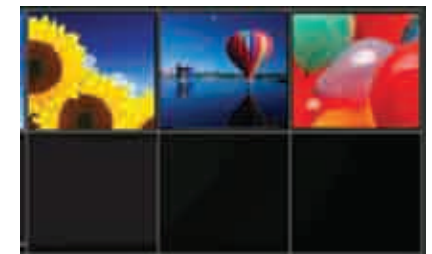
Photos

This player supports the playback of pictures in formats of JPEG and BMP.

1. Press and hold the [▶||/M] button to enter the main menu.
2. Use the [◀◀] or [▶▶] button to select Photos and press the [▶||/M] button.
3. Use the [◀◀] or [▶▶] button to select mode from Manual, Slide Show, Thumbnail, and press the [▶||/M] button to view your pictures.
 - Manual: To view pictures manually. Use the [◀◀] or [▶▶] button to display the previous or next picture.
 - Slide Show: To play a slide show. Once you select it, all pictures on your player starts slide show.
 - Thumbnail: To view pictures in thumbnails. Use the [◀◀] or [▶▶] button to navigate between pictures and press the [▶||/M] button to view the selected picture in full screen.
4. Press the [⏻] button to exit the picture view mode return to the previous menu.



Manual mode

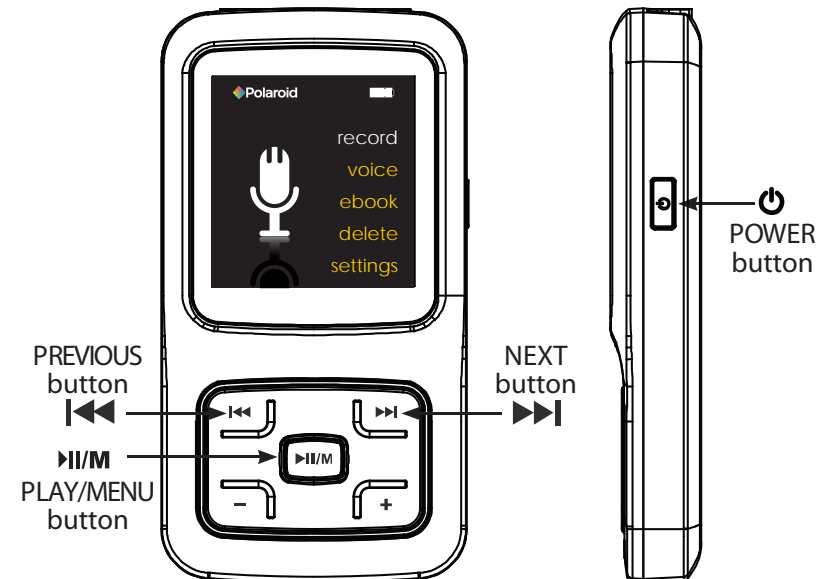


Thumbnail mode

Voice recorder

To record voice memos, select "Record" from the main menu.

1. Press and hold the [▶||/M] button to enter the main menu.
2. Use the [◀◀] or [▶▶] button to select Record and press [▶||/M] the button. The recording menu appears and the player start recording.
3. To pause the recording, press the [▶||/M] button. To resume the recording, press the [▶||/M] button again.
4. To save recording and return to main menu, press the [⏻] button. The player will go to the Voice playback interface. The recorded files are saved in the MICIN.DIR folder of the MP3 player as WAV files (format: MIC0000X.WAV) and can be listened to in the Voice mode.
5. Press the [▶||/M] button to start playing the recorded files or press and hold the [▶||/M] button to exit the voice mode.



To listen to your recorded voice memos select "Voice" from the main menu.

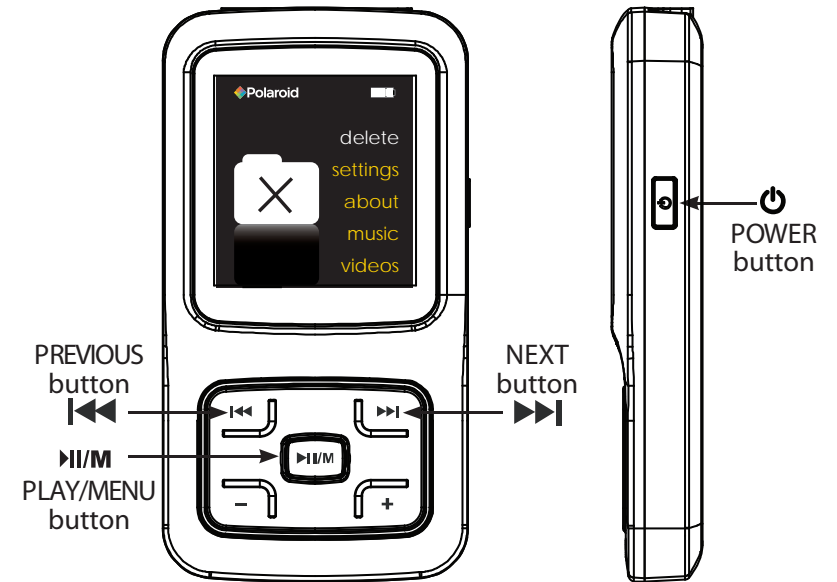
1. Press and hold the [▶||/M] button to enter the main menu.
2. Use the [◀◀] or [▶▶] button to select the Voice and press the [▶||/M] button.
3. Press the [▶||/M] button to play the recorded files.
4. To exit the Voice mode, press and hold the [▶||/M] button to return the main menu.



Deleting files

In the delete mode, you can delete the files and folders stored on your player without a computer.

1. Press and hold the [▶||/M] button to enter the main menu.
2. Use the [◀◀] or [▶▶] button to select Delete and press the [▶||/M] button.
3. Press the [◀◀] or [▶▶] button to navigate between files or folder.
4. To delete a file, select the file and press the [▶||/M] button or the [⏻] button. To delete a folder, select the folder and press the [⏻] button. The Delete menu appears on the screen.
5. Use the [◀◀] or [▶▶] button to select Yes (continue delete) or No (cancel delete), and press the [▶||/M] button to start deleting the files or exit without deleting.



System settings

To adjust the settings of the MP3 player, select "Settings" from the main menu.

System Settings options:

Language

- To select a desired menu language.

Play mode

- To select the repeat mode for the music, voice and movie playback.
 - Normal: Play all saved files in order once
 - Repeat One: Play the current or selected file repeatedly.
 - Repeat All: Play all the files in order repeatedly.
 - Random & Repeat: Play all the files in random repeatedly.

Record settings

- To set the microphone recording quality.

Contrast

- To adjust the contrast of screen display.

Timer off

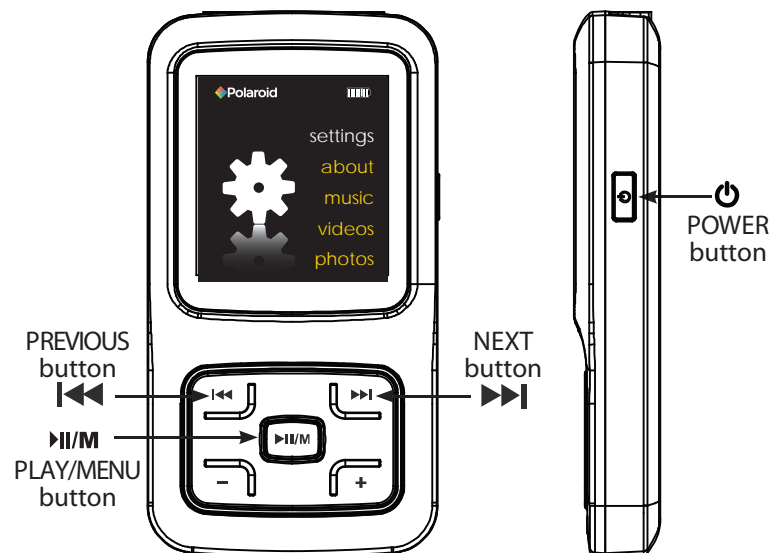
- Stop Off: To set the shutdown time. The player will turn off automatically if the player is not used for the set time.
- Sleep Off: To set the sleep time. The player will turn off automatically after the set time.
- Backlight Off: To set the LCD off time. The backlight will turn off automatically if no button is pressed for the set time.

Reset

- To restore all settings of the player to factory default settings.

Key lock

- To set the activation time of the key lock feature.



Troubleshooting

If you have problems while operating your player, please check the points below before sending it to the service center

Can not power on

- The battery may be exhausted, please recharge the battery

Files can not be transferred to the player

- Check if the driver is installed correctly in the computer by disconnecting and then reconnecting the player to the computer
- Check the connection between the player and PC, and confirm the USB cable is properly connected

No sound from the headphones

- Please ensure the volume is turned up, and the headphones are properly connected
- Check if the format of music file is supported by the player

Can not record

- Check if there is enough memory and battery capacity

Display is in the wrong language

- Please ensure you selected the correct language from the "Settings" menu

The buttons do not work

- The player may be locked. Unlock it by pressing and holding the [▶/M] button.
- Press the reset hole with a metal pin to re-initialize the system of the player

My computer is not detecting the MP3 Player with Windows Vista

- There is a USB mass storage devices recognition issue with Windows Vista acknowledged by Microsoft. A solution is available in the Service Pack 1 which may be downloaded from Microsoft's website

I cannot display my .jpg files

- Many digital cameras and image editing softwares add hidden data to the .jpg files. This data can prevent your MP3 from loading the images. Try to eliminate them by saving the file with another name.

The player freezes or not functioning properly

- If the MP3 Player malfunctions, you can use the Reset function to restart it. To reset the Player, take a metal pin (such as the end of a paperclip), and push it into the RESET hole to restart the Player.

Online support



www.southerntelecom.com/polaroid

Customer Support:

☎ 1-877-768-8483 (Toll Free)

✉ cs@southerntelecom.com

Important safety precautions

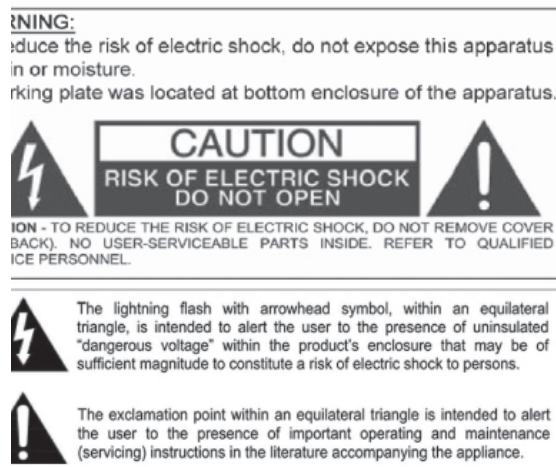
Always follow these basic safety precautions when using your player. This will reduce the risk of product damage and personal injury.

- Do not disassemble, repair or modify the player by yourself. Refer servicing to qualified personnel.
- This device contains a built-in battery, do not dispose of in fire.
- In the event that the battery is leaking, do not handle the device with your bare hands.
- Contact the service center for help since the liquid may remain in the player. If your body or clothes had contact with the battery liquid, wash it off thoroughly with water and consult a doctor.
- Keep the player away from direct sunlight and any direct heat source.
- Do not expose the unit to rain or moisture.
- Do not use the player in dry environments to avoid static.

- Never apply heavy impact on the player, or place it on a magnet.
- Route the USB cable so that people and pets are not likely to trip over it.
- Disconnect the USB cable from the computer when you do not use the player for a long time.
- Clean only with a dry cloth. Make sure the player is turned off before cleaning. Do not use a liquid cleanser.
- Be sure to back up your files to avoid data loss.

Precautions in using the headphones

- Do not use the headphones while driving an automobile or riding a bicycle it is dangerous and against the law. To avoid an accident, do not turn up the volume of the headphones too high while walking.
- It is not recommended that you use the headphones at a high volume for an extended time, as this may cause hearing damage.



Legal information

FCC Part 15:

This equipment has been tested and found to comply with the requirements for a Class B digital device under Part 15 of the Federal Communications Commission (FCC) rules. These requirements are intended to provide reasonable protection against harmful interference in a residential installation.

This equipment generates, uses and can radiate radio frequency energy and, if not installed and used in accordance with the instructions, may cause harmful interference to radio communications. However, there is no guarantee that interference will not occur in a particular installation. If this equipment does cause harmful interference to radio or television reception, which can be determined by turning the equipment off and on, the user is encouraged to try to correct the interference by one or more of the following measures:

- Re-orient or relocate the receiving antenna.
- Increase the separation between the equipment and receiver.
- Connect the equipment into an outlet on a circuit different from that to which the receiver is connected.
- Consult the dealer or an experienced radio/TV technician for help.

Changes or modifications to this equipment not expressly approved by the party responsible for compliance could void the user's authority to operate the equipment.

Copyright Information:

Trademarks and trade names used in this instruction manual are owned by their respective companies or organizations.

Unauthorized duplication of any recordings whether downloaded from the Internet or made from audio CDs is a violation of copyright laws and international treaties.

The making of unauthorized copies of copy-protected material, may be an infringement of copyrights and constitute a criminal offense. This equipment should not be used for such purposes.

Limited warranty

In the unlikely event that this product is defective, or does not perform properly, you may within ninety (90) days from your original date of purchase return it to the authorized service center for repair or exchange.

TO OBTAIN WARRANTY SERVICE:

- Provide proof of the date of purchase within the package (Dated bill of sale)
- Prepay all shipping costs to the authorized service center, and remember to insure your return.
- Include a return shipping address (no P.O. Boxes), a telephone contact number, and the defective unit within the package.
- Describe the defect or reason you are returning the product. Your product will be repaired or replaced, at our option, for the same or similar model of equal value if examination by the service center determines this product is defective. Products received damaged as a result of shipping, will require you to file a claim with the carrier.

The shipping address of the authorized service center is:

SouthernTelecom Inc.
ATTN: Returns Department
14-C 53rd Street Brooklyn, NY 11232

Should you have any questions or problems concerning this product, please contact our customer service department at:

Customer Support: ☎ 1-877-768-8483(Toll Free)
✉ cs@southerntelecom.com

Monday -Thursday: 9AM - 5PM (EST)
Friday: 9AM - 3PM (EST)

To obtain service after the warranty period, please e-mail cs@southerntelecom.com with product information, date of purchase and nature of the problem. Customer service will reply to the e-mail with service instructions.

Warranty service not provided:

This warranty does not cover damage resulting from accident, misuse, abuse, improper installation or operation, lack of reasonable care, and unauthorized modification. This warranty is voided in the event any unauthorized person opens, alters or repairs this product. All products being returned to the authorized service center for repair must be suitably packaged.

Limitation of Warranty:

- THE WARRANTY STATED ABOVE IS THE ONLY WARRANTY APPLICABLE TO THIS PRODUCT. ALL OTHER WARRANTIES, EXPRESS OR IMPLIED (INCLUDING ALL IMPLIED WARRANTIES OF MERCHANTABILITY OR FITNESS FOR A PARTICULAR PURPOSE) ARE HEREBY DISCLAIMED. NO VERBAL OR WRITTEN INFORMATION GIVEN BY SOUTHERN TELECOM INC. IT'S AGENTS, OR EMPLOYEES SHALL CREATE A GUARANTY OR IN ANY WAY INCREASE THE SCOPE OF THIS WARRANTY.
- REPAIR OR REPLACEMENT AS PROVIDED UNDER THIS WARRANTY IS THE EXCLUSIVE REMEDY OF THE CONSUMER, SOUTHERN TELECOM INC. SHALL NOT BE LIABLE FOR INCIDENTAL OR CONSEQUENTIAL DAMAGES RESULTING FROM THE USE OF THIS PRODUCT OR ARISING OUT OF ANY BREACH OF ANY EXPRESS OR IMPLIED WARRANTY ON THIS PRODUCT. THIS DISCLAIMER OF WARRANTIES AND LIMITED WARRANTY ARE GOVERNED BY THE LAWS OF THE STATE OF NEW YORK. EXCEPT TO THE EXTENT PROHIBITED BY APPLICABLE LAW, ANY IMPLIED WARRANTY OF MERCHANTABILITY OR FITNESS FOR A PARTICULAR PURPOSE ON THIS PRODUCT IS LIMITED TO THE APPLICABLE WARRANTY PERIOD SET FORTH ABOVE.

How state law relates to this warranty:

- Some states do not allow the exclusion nor limitation of incidental, consequential damages, or limitations on how long an implied warranty lasts so the above limitations or exclusion may not apply to you..
- This warranty gives you specific legal rights, and you also may have other rights that vary from state to state.



"Polaroid" and "Polaroid and Pixel" are registered trademarks of Polaroid Corporation, used under license.

Microsoft, the Windows logo, and Windows Media are either registered trademarks of Microsoft Corporation in the United States and / or other countries.

Free Manuals Download Website

<http://myh66.com>

<http://usermanuals.us>

<http://www.somanuals.com>

<http://www.4manuals.cc>

<http://www.manual-lib.com>

<http://www.404manual.com>

<http://www.luxmanual.com>

<http://aubethermostatmanual.com>

Golf course search by state

<http://golfingnear.com>

Email search by domain

<http://emailbydomain.com>

Auto manuals search

<http://auto.somanuals.com>

TV manuals search

<http://tv.somanuals.com>