

4GB

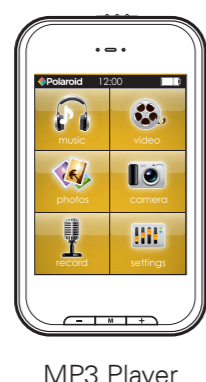
Music & Video Player  
with 2.8" Touch Display  
PMP280C-4

Polaroid



### User Guide

### In the box



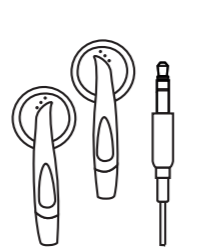
MP3 Player



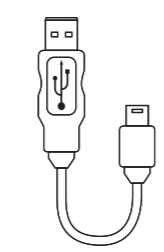
CD  
(Video Converter)



User Guide

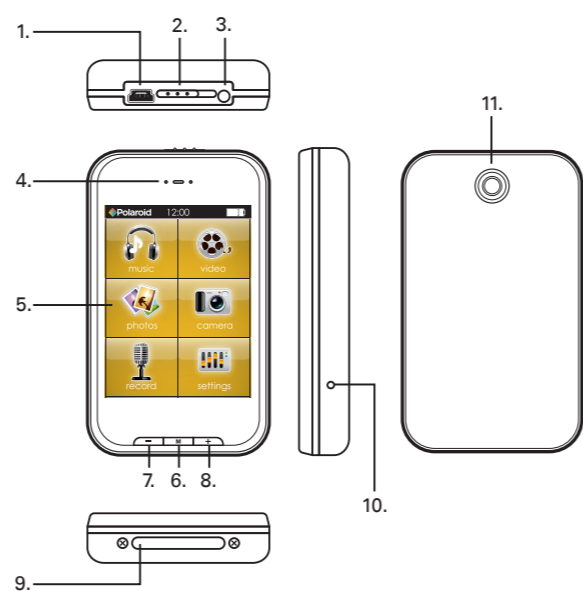


Headphones



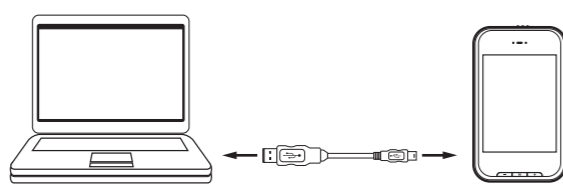
USB Cable

### Location of controls



1. Mini-USB port
2. [POWER] ... on/off switch lock
3. Headphone jack
4. Speaker
5. Touch Screen display
6. [M] Select/return to main menu
7. [-] ... Volume down/Previous track
8. [+] ... Volume up/Next track
9. Mini SD card slot
10. Reset
11. Camera

### Charging



1. Connect the player to your computer using the included USB cable.
2. Charge the battery between 3-5 hours. Do not charge for more than 8 hours.



### Mini SD card

The player supports Mini SD cards (not included), which allow you to add up to 8GB additional memory to the MP3 Player.

1. To insert the Mini SD card:
  1. Insert the Mini SD card into the card slot with the metal contacts facing down towards the back of the player and gently push it in until it clicks. Do not apply excessive force, as this may damage the player and Mini SD card.
2. To remove the Mini SD card, gently push it in until it pops out.



Mini SD card  
(Insert contacts facing down)

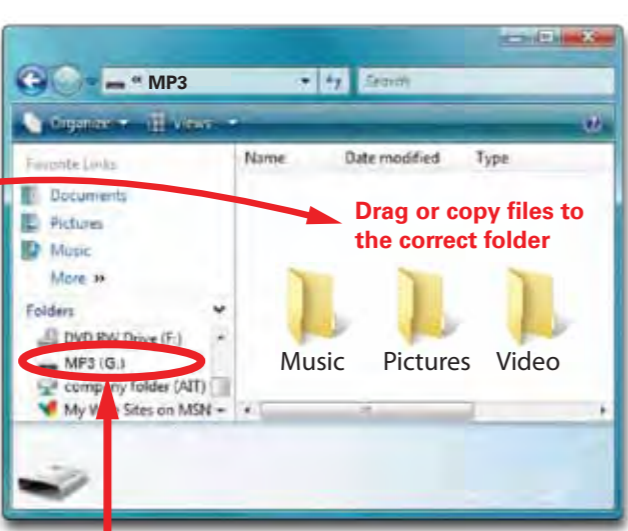
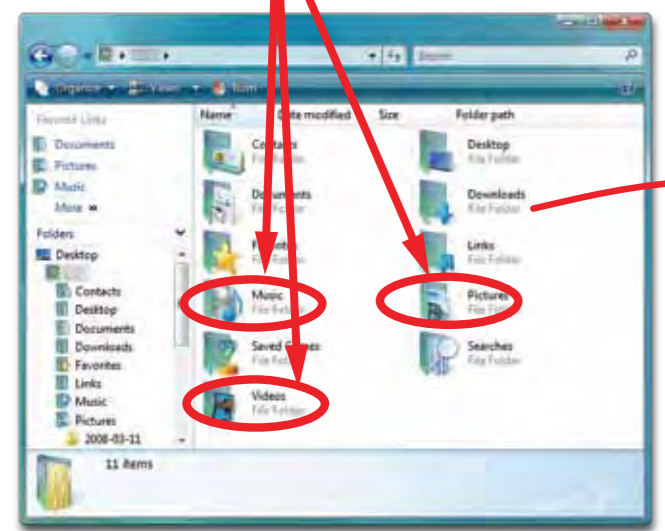
You may access the files on the card from the browser in the music screen.

### Limited Warranty

This Product is supplied and distributed by AIT Inc. ("AIT") to the original consumer purchaser and is warranted by AIT against defects in materials and workmanship for a period of one year from your date of purchase ("Warranty").

### Transferring media files to the player

1. Find music, picture, or video files on your computer.
2. Connect the MP3 Player to your computer, and locate "MP3".
3. Drag the files into the Music, Pictures or Video folder.



Locate "MP3"

It is also possible to delete files on the player while connected to the computer. Select the file and press the delete key of the computer's keyboard.

### Converting videos

Before transferring video files to the player, you must convert them to the correct format. Use the Video Converter provided on the included CD to convert most video files to the correct format suitable for the player.

1. Insert the CD into your computer's CD drive.
2. The CD should open automatically. On the installer screen that appears, select "Video Converter".

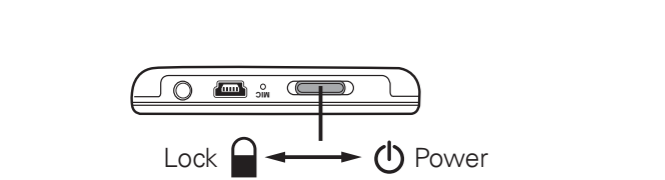


Installer screen

If the CD does not open automatically, go to "My Computer" to manually launch the installer screen.

### Using the player

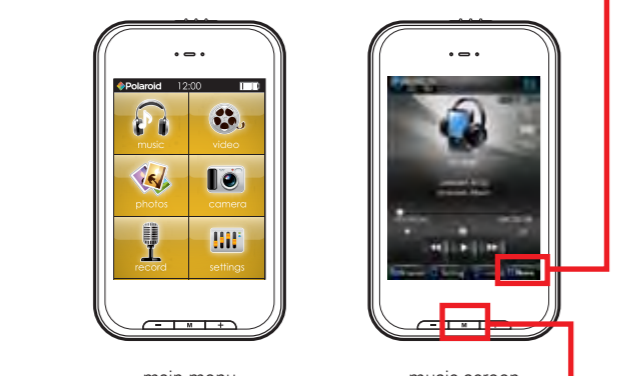
**Turning on/off:**  
Make sure the player is fully charged before turning it on.  
• To turn the player on/off, slide and hold the [POWER] switch to the right until the display turns on or off.



**Lock/unlock function:**  
The Lock function prevents you from accidentally pressing the buttons while using the player.  
• To lock the player, slide the [POWER] switch to the left. To unlock, slide the [POWER] switch to the right.

**Resetting the player:**  
If the player malfunctions or freezes, you can use the reset function to restart it.  
• To reset the player, take a metal pin (such as the end of a paperclip), and gently push it into the RESET hole to restart the player.

After turning on the player, the main menu appears.  
• Touch an icon on the main menu to select it.  
• To return to the main menu, press the [M] button or press and hold the [M] button.



- Main Menu Options:**
- music: play songs
  - video: play movies
  - photos: view pictures
  - record: record voice memos
  - browser: view or delete files on the player
  - settings: change system settings

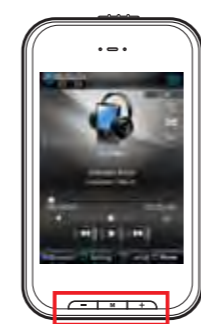
**Listening to music**  
Select "music" from the main menu and the music screen appears. Music playback can be controlled from the touch display or the [+/-] [M] buttons of the player.



To search for music files on the player select "Browser" and "Main Directory" or "Card Dir" (if a Mini SD card is inserted in the player).

Depending on what you're doing on the MP3 Player, the different buttons perform different functions.

### In Music Modes



You can also touch an item to select it.

	During Play Mode	During Standby Mode
[+]	Volume Up	Next Song
[-]	Volume Down	Previous Song
[M] ...	<ul style="list-style-type: none"> <li>• Play/pause music</li> <li>• Makes a selection</li> <li>• Press &amp; hold to return to the main menu</li> </ul>	

### Video control



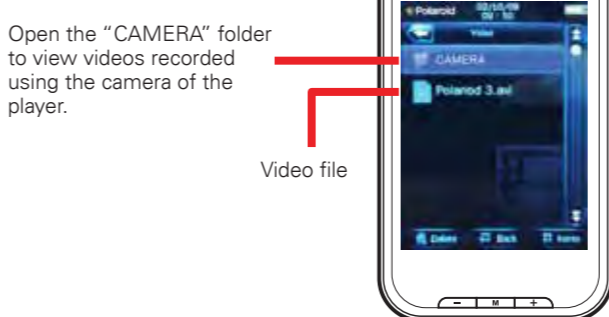
You can also touch an item to select it.

	During Play Mode	During Standby Mode
[+]	Volume Up	Next Video
[-]	Volume Down	Previous Video
[M] ...	<ul style="list-style-type: none"> <li>• Play/pause video</li> <li>• Makes a selection</li> <li>• Press &amp; hold to return to the main menu</li> </ul>	

### Videos

Select "videos" from the main menu, and the video browser screen appears.

Use the [+]/[-] button to select a video file, and press the [M] button to start playing the selected video.



Before transferring video files to the player, you must convert them to the correct format. Use the Video Converter provided on the included CD to convert most video files. Refer to "Converting videos".

### Camera

To take pictures, select "camera" from the main menu.

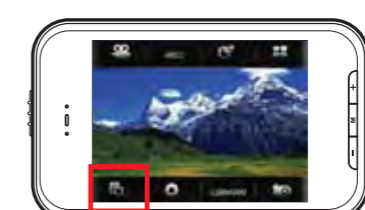
Press the [M] button to enter "Take pictures".  
Press [ ] or the [M] button to take a picture.

- [+] Moves the selection down
- [-] Moves the selection up
- [M] ...
  - Makes a selection
  - Press & hold to return to the main menu

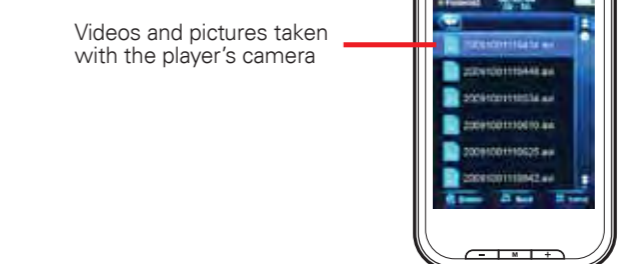
To record videos, select "Record videos".

Press [ ] or the [M] button to record a video.  
Press [ ] or the [M] button to save a video.

To view videos or pictures taken with the player's camera, touch [ ].



Touch to view pictures or videos



Videos and pictures taken with the player's camera in the "video" or "photos" mode.

### Menus or File Browsing

- [+] Moves the selection down
- [-] Moves the selection up
- [M] ...
  - Makes a selection
  - Press & hold to return to the main menu

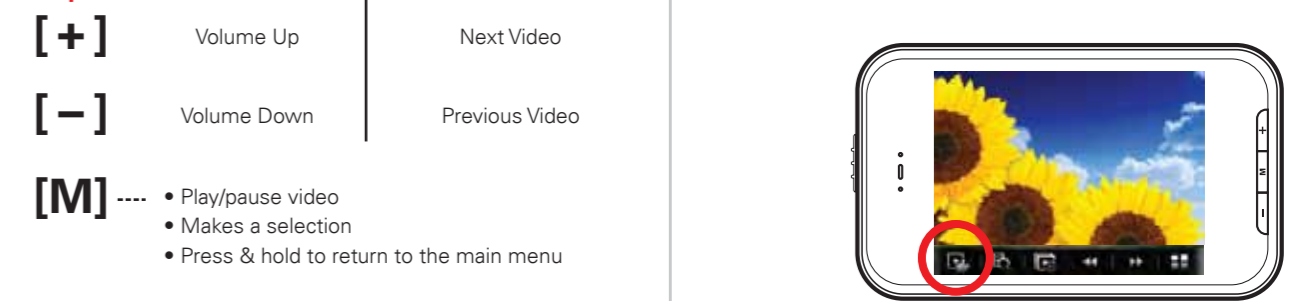
Touch "Delete" to delete files from the player or SD card.

### Photos

Select "photos" from the main menu, and the photo browser screen appears.

Use the [+]/[-] button to scroll through the "IMAGE" folder and select a photo you would like to view, and press the [M] button.

To view all pictures in slideshow mode, press [ ] to switch between automatic / manual slideshow.

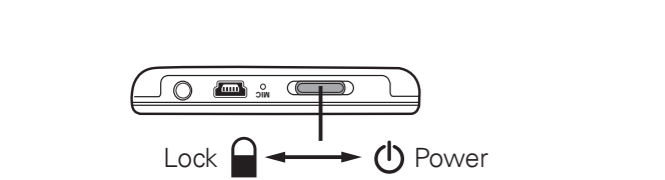


### Basic operation

### Legal information

### Troubleshooting

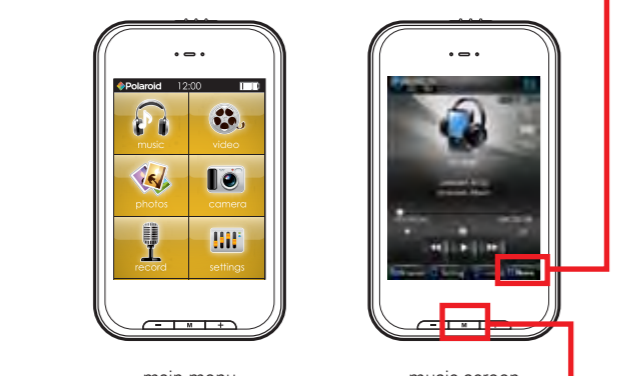
**Turning on/off:**  
Make sure the player is fully charged before turning it on.  
• To turn the player on/off, slide and hold the [POWER] switch to the right until the display turns on or off.



**Lock/unlock function:**  
The Lock function prevents you from accidentally pressing the buttons while using the player.  
• To lock the player, slide the [POWER] switch to the left. To unlock, slide the [POWER] switch to the right.

**Resetting the player:**  
If the player malfunctions or freezes, you can use the reset function to restart it.  
• To reset the player, take a metal pin (such as the end of a paperclip), and gently push it into the RESET hole to restart the player.

After turning on the player, the main menu appears.  
• Touch an icon on the main menu to select it.  
• To return to the main menu, press the [M] button or press and hold the [M] button.



- Main Menu Options:**
- music: play songs
  - video: play movies
  - photos: view pictures
  - record: record voice memos
  - browser: view or delete files on the player
  - settings: change system settings

**Listening to music**  
Select "music" from the main menu and the music screen appears. Music playback can be controlled from the touch display or the [+/-] [M] buttons of the player.



To search for music files on the player select "Browser" and "Main Directory" or "Card Dir" (if a Mini SD card is inserted in the player).

**Settings**  
In the settings menu you can customize various player settings such as power usage, language, display settings and more.



Adjust the "Backlight Time" and "Power off" options to extend and optimize battery performance.

**FCC Part 15:**  
This equipment has been tested and found to comply with the requirements for a Class B digital device under Part 15 of the Federal Communications Commission (FCC) rules. These requirements are intended to provide reasonable protection against harmful interference in a residential installation. This equipment generates, uses and can radiate radio frequency energy and, if not installed and used in accordance with the instructions, may cause harmful interference to radio communications. However, there is no guarantee that interference will not occur in a particular installation. If this equipment does cause harmful interference to radio or television reception, which can be determined by turning the equipment off and on, the user is encouraged to try to correct the interference by one or more of the following measures:

- Re-orient or relocate the receiving antenna.
- Increase the separation between the equipment and receiver.
- Connect the equipment into an outlet on a circuit different from that to which the receiver is connected.
- Consult the dealer or an experienced radio/TV technician for help.

Do not attempt to repair or modify this equipment.  
Warning: Changes or modifications to this equipment not expressly approved by the party responsible for compliance could void the user's authority to operate the equipment.  
\*This device complies with Part 15 of the FCC Rules. Operation is subject to the following two conditions:  
(1) this device may not cause harmful interference, and  
(2) this device must accept any interference received, including interference that may cause undesired operation.

Shielded USB cables must be used with this unit to ensure compliance with the Class B FCC limits.

PLR IP Holdings, LLC, its licensees and affiliates, fully supports all electronic waste initiatives. As responsible stewards of the environment, and to avoid violating established laws, you should properly dispose of this product in compliance with all applicable regulations, directives or other governmental orders in the area where you reside. Please check with local authorities or the retailer where you purchased this product to determine a location where you can appropriately dispose of the product.

You may also go to: HYPERLINK "http://www.polaroid.com" www.polaroid.com and reference About / Electronic Recycling to learn more about the specific laws in your area and to locate a collection facility near your home.  
If your electronic device has internal memory on which personal or other confidential data may be stored, you may want to perform a data sanitization process before you dispose of your device to assure another party cannot access your personal data. Data sanitization varies by the type of product and its software, and you may want to research the best sanitization process for your device before disposal. You may also check with your local recycling facility to determine their data sanitization procedures during the recycling process.

**Can not power on**  
• The battery may be exhausted, please recharge the battery.

**Files can not be transferred to the player**  
• Check if the driver is installed correctly in the computer by disconnecting and then reconnecting the player to the computer  
• Check the connection between the player and PC, and confirm the USB cable is properly connected.

**No sound from the headphones**  
• Please ensure the volume is turned up, and the headphones are properly connected.  
• Check if the format of music file is supported by the player.

**Can not record**  
• Check if there is enough memory and battery capacity.

**Display is in the wrong language**  
• Please ensure you selected the correct language from the "Settings" menu.

**The buttons do not work**  
• Slide the [POWER] switch to the right to unlock the player.

**I cannot display my .jpg files**  
• Many digital cameras and image editing softwares add hidden data to the .jpg files. This data can prevent the player from loading the images. Try to eliminate them by saving the file with another name.

**Resetting the player**  
If the player malfunctions, you can use the reset function to restart it.  
• To reset the player, take a metal pin (such as the end of a paperclip), and push it into the RESET hole to restart the player.

## Free Manuals Download Website

<http://myh66.com>

<http://usermanuals.us>

<http://www.somanuals.com>

<http://www.4manuals.cc>

<http://www.manual-lib.com>

<http://www.404manual.com>

<http://www.luxmanual.com>

<http://aubethermostatmanual.com>

Golf course search by state

<http://golfingnear.com>

Email search by domain

<http://emailbydomain.com>

Auto manuals search

<http://auto.somanuals.com>

TV manuals search

<http://tv.somanuals.com>