

MP3 Music Player
with Built-in Speaker
PMP90TM



User Manual

www.polaroid.com

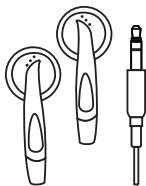
Polaroid and *Polaroid & Pixel* are trademarks of PLR IP Holdings, LLC, used under license. PLR IP Holdings, LLC does not manufacture this product or provide any Manufacturer's Warranty or support.

© 2011 All Rights Reserved

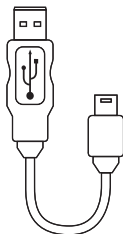
In the box



MP3 Player



Headphones

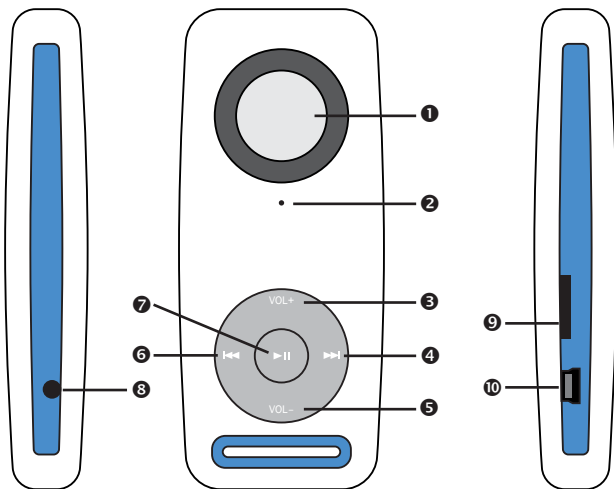


USB Cable



User Manual

Location of controls



- 1 Speaker
- 2 LED light
- 3 Volume up
- 4 Next / Fast forward (HOLD) button
- 5 Volume down
- 6 Previous / Rewind (HOLD) button
- 7 Play / Pause / Power (HOLD) button
- 8 Headphone jack
- 9 Micro SD card slot
- 10 Mini USB port

Charging the battery

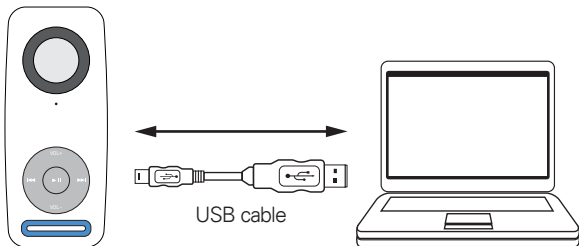
System requirements

Your computer system must meet the following specifications:

- Windows 2000, SE, ME, XP, Vista, 7, Mac OS X
- Pentium Class or faster Processor
- 64MB RAM
- 30MB of free hard disk space
- USB Port

Supported file formats: MP3, WMA

1. Connect the player to your computer using the included USB cable.



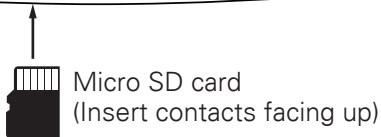
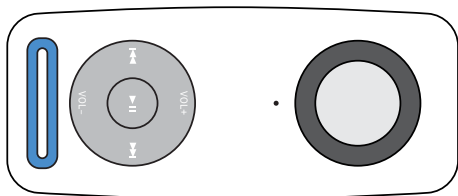
2. Charge the battery between 3-5 hours. Do not charge for more than 8 hours.

Micro SD card

The player supports Micro SD cards (not included), which allow you to add up to 16GB additional memory to the MP3 Player.

To insert the Micro SD card:

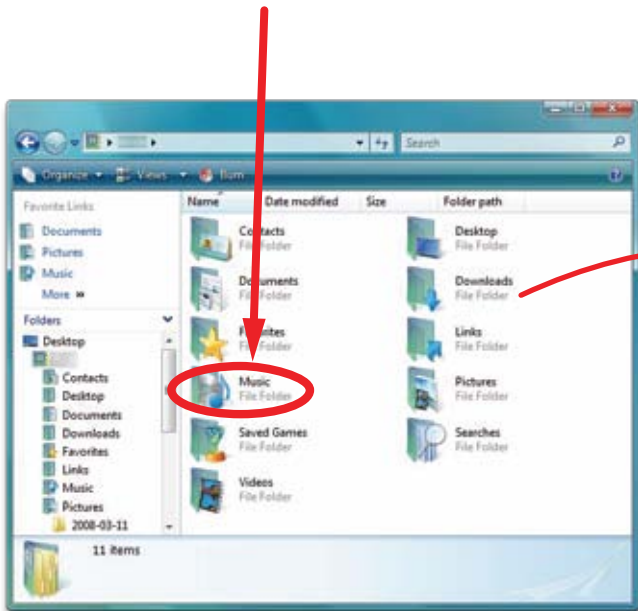
1. Insert the Micro SD card into the card slot with the metal contacts facing up towards the front of the player and gently push it in until it clicks. Do not apply excessive force, as this may damage the player and Micro SD card.



2. To remove the Micro SD card, gently push it in until it pops out.
3. When plugged into a computer with a Micro SD card inserted, the player will read as the "MP3" drive and the Micro SD card will read as the

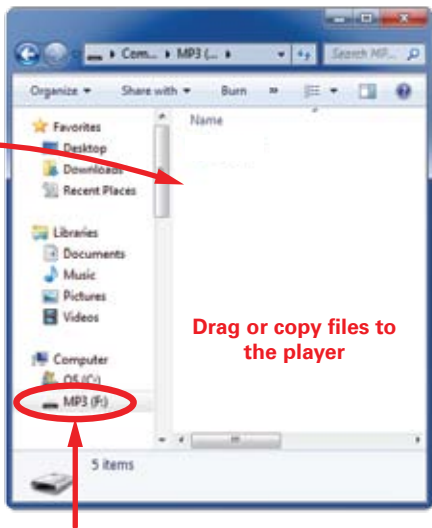
Transferring media files to the player

1. Find music files on your computer.



*Screenshots above may be slightly different than your computer's operating system.

2. Connect the MP3 Player to your computer, and locate "MP3".
3. Drag the files into the player as shown below.

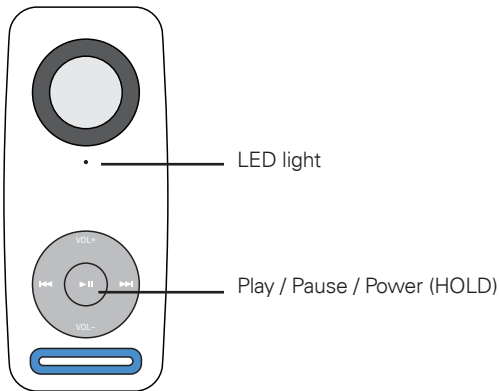


Locate "MP3"



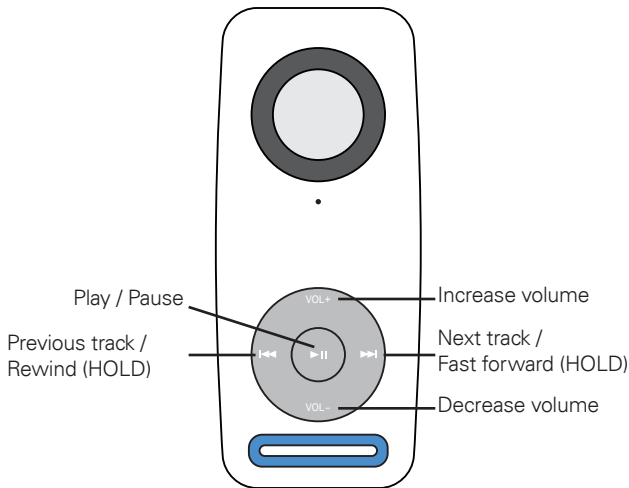
It is also possible to delete files on the player while connected to the computer. Select the file and press the delete key of the computer's keyboard.

Using the player



1. To turn on the player, press the [►||] button. The LED light will flash and the first song on the playlist will begin playing. The LED light will blink once every second to show the player is on and playing music.
2. To pause the music, press the [►||] button. The LED light will stay solid to show the player is on and paused.
3. To turn off the player, press and HOLD the [►||] button for two full seconds. The LED light will flicker and the player will turn off.

Playing music



[▶||] - play / pause music

[◀◀] - previous track / rewind (press and HOLD)

[▶▶] - next track / fast forward (press and HOLD)

[VOL +] - increase volume

[VOL -] - decrease volume



When a Micro SD card with music is inserted into the memory card slot, the music will start playing from the SD card first, then proceed to play the music on the internal memory.

Legal Information

FCC Part 15:

This equipment has been tested and found to comply with the requirements for a Class B digital device under Part 15 of the Federal Communications Commission (FCC) rules. These requirements are intended to provide reasonable protection against harmful interference in a residential installation. This equipment generates, uses and can radiate radio frequency energy and, if not installed and used in accordance with the instructions, may cause harmful interference to radio communications. However, there is no guarantee that interference will not occur in a particular installation. If this equipment does cause harmful interference to radio or television reception, which can be determined by turning the equipment off and on, the user is encouraged to try to correct the interference by one or more of the following measures:

- Re-orient or relocate the receiving antenna.
- Increase the separation between the equipment and receiver.
- Connect the equipment into an outlet on a circuit different from that to which the receiver is connected.
- Consult the dealer or an experienced radio/TV technician for help.

Do not attempt to repair or modify this equipment.

Warning: Changes or modifications to this equipment not expressly approved by the party responsible for compliance could void the user's authority to operate the equipment.

"This device complies with Part 15 of the FCC Rules. Operation is subject to the following two conditions:

- (1) this device may not cause harmful interference, and
- (2) this device must accept any interference received, including interference that may cause undesired operation."

PLR IP Holdings, LLC, its licensees and affiliates, fully support all electronic waste initiatives. As responsible stewards of the environment, and to avoid violating established laws, you should properly dispose of this product in compliance with all applicable regulations, directives or other governances in the area where you reside. Please check with local authorities or the retailer where you purchased this product to determine a location where you can appropriately dispose of the product.

You may also go to [HYPERLINK "http://www.polaroid.com"](http://www.polaroid.com) www.polaroid.com and reference About / Electronic Recycling to learn more about the specific laws in your area and to locate a collection facility near your home.

If your electronic device has internal memory on which personal or other confidential data may be stored, you may want to perform a data sanitization process before you dispose of your device to assure another party cannot access your personal data. Data sanitization varies by the type of product and its software, and you may want to research the best sanitization process for your device before disposal. You may also check with your local recycling facility to determine their data sanitization procedures during the recycling process.

Limited Warranty

This Product as supplied and distributed new by AIT, Inc. ("AIT") to the original consumer purchaser and is warranted by AIT against defects in material and workmanship for a period of one year from your date of purchase ("Warranty").

In the unlikely event that this product is defective, or does not perform properly, you may within one year from your original date of purchase return it to the authorized service center for repair or exchange.

TO OBTAIN WARRANTY SERVICE:

- Provide proof of the date of purchase within the package (Dated bill of sale)
- Prepay all shipping costs to the authorized service center, and remember to insure your return.
- Include a return shipping address (no P.O. Boxes), a telephone contact number, and the defective unit within the package.
- Describe the defect or reason you are returning the product. Your product will be repaired or replaced, at our option, for the same or similar model of equal value if examination by the service center determines this product is defective. Products received damaged as a result of shipping, will require you to file a claim with the carrier.

The shipping address of the authorized service center is:

AIT, Inc.

ATTN: Customer Service (2nd floor)
14-C 53rd Street Brooklyn, NY 11232

IN NO EVENT WILL AIT, ITS MANUFACTURERS, DISTRIBUTORS OR PLR IP HOLDINGS, LLC BE LIABLE FOR ANY INCIDENTAL, DIRECT, INDIRECT, SPECIAL, PUNITIVE OR CONSEQUENTIAL DAMAGES (SUCH AS, BUT NOT LIMITED TO, DAMAGES FOR LOSS OF PROFITS, BUSINESS, SAVINGS, DATA OR RECORDS) RELATED TO THIS PRODUCT. EXCEPT AS STATED HEREIN, NO OTHER WARRANTIES SHALL APPLY.

Should you have any questions or problems concerning this product, please contact our customer service department at:

Customer Support:

☎ 1-877-768-8483 (Toll Free)

✉ polaroidsupport@southerntelecom.com

Monday - Thursday: 9AM - 5PM (EST)

Friday: 9AM - 3PM (EST)

Free Manuals Download Website

<http://myh66.com>

<http://usermanuals.us>

<http://www.somanuals.com>

<http://www.4manuals.cc>

<http://www.manual-lib.com>

<http://www.404manual.com>

<http://www.luxmanual.com>

<http://aubethermostatmanual.com>

Golf course search by state

<http://golfingnear.com>

Email search by domain

<http://emailbydomain.com>

Auto manuals search

<http://auto.somanuals.com>

TV manuals search

<http://tv.somanuals.com>