



LCi-RTS105, LCi-RTS100

Both the LCi-RTS105 and LCi-RTS100 feature an integrated “perfect volume” performance enclosure to ensure superb performance every time. Because the performance enclosure is the same size as the cutout, each installs easily in a post construction project.

- Stud-Lock Mounting System™ (patent pending-sold separately) creates a rigid platform for the LCi-RTS105, increasing bass performance, clarity and reducing unwanted structure borne vibration.
- THX® Ultra 2-certified, so you’re assured of great surround sound performance and exceptional dynamic range.
- Aerated polypropylene Dynamic Balance® cones (two 5 1/4" drivers) have lower excursion rates and therefore less distortion for better sound. They are stiff yet lightweight for superb mid-range clarity, punchy bass and high efficiency. These cones are 20% lighter than conventional polypropylene and 35% lighter than aluminum cones.

- The Ring Radiator tweeter design, found in freestanding speakers, delivers smooth, extended highs with excellent accuracy and astonishing detail. A redesigned faceplate geometry refines off-axis characteristics.

LCi-RTS105

OVERALL DIMENSIONS:
21 3/4" H X 12" W X 3 11/16" D (55.2CM H X 30.4CM W X 9.4CM D)
OVERALL FREQUENCY RESPONSE 50Hz - 27kHz.

LCi-RTS100

OVERALL DIMENSIONS:
14" DIAMETER X 8 3/4" DEPTH (35.6CM DIAMETER X 22.2CM DEPTH)
OVERALL FREQUENCY RESPONSE 50Hz - 27kHz.

SEE SPECIFICATIONS FOR MORE DETAILED PRODUCT INFORMATION.



MATTE WHITE (PAINTABLE)



LCi-RTS105

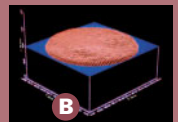
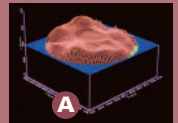


LCi-RTS100

polk
technology

DYNAMIC BALANCE®

Advanced laser imaging technology allowed Polk Audio engineers to see the entire vibrating surface of a driver and tweeter; they could actually see the resonance develop on the speaker cones—resonance that is the root cause of loudspeaker distortion (A). Being able to see the resonance develop, they determined the “Dynamic Balance” of high-tech materials, geometry and construction that effectively tune out the offending resonance (B). Exclusive Dynamic Balance Composite Material Technology delivers sound that’s effortlessly clean and clear, even at lifelike volume. See more about Dynamic Balance at www.polkaudio.com/catalog/technology/.



LCi-RTS_F/x®, LCi-RTSc

Like the other models in the LCi-RTS Built-In Series, these new loudspeakers have been “engineered for predictably superior home theater performance.” Both models feature technologies used in Polk’s critically acclaimed LSi Series of freestanding speakers to deliver the sound quality of stand-alone models.

- Integrated Performance Enclosure—(LCi-RTS_F/x) This feature is the same proven integrated “perfect volume” performance enclosure found on the LCi-RTS105.
- Stud-Lock Mounting System™ (LCi-RTS_F/x) creates a rigid platform, improving bass performance, clarity and reducing unwanted structure-borne vibration.
- THX® Ultra2 certified, so you’re assured of great surround sound performance and exceptional dynamic range.
- Aerated Polypropylene Dynamic Balance cones possess an ideal balance of stiffness, damping and low mass for superb clarity, detail and high efficiency.
- Ring radiator tweeter design, found in freestanding speakers, delivers smooth high frequency extension with excellent clarity and detail.
- Cascade Tapered Array—(LCi-RTSc) employs two 5 1/4" APP cone drivers. One driver plays only bass frequencies, the other bass and midrange, for broad, even sound coverage for off-axis listeners.
- Rigid MDF Performance Enclosure (supplied with LCi-RTSc) helps ensure predictable high performance as it maximizes sound isolation with adjacent rooms.
- Two grilles—One cloth grille for maximum sonic performance, one aluminum mesh for a more traditional appearance.
- Room Environment Controls—Refined Wall Distance (LCi-RTS_F/x) lowers output only in the low-midrange/upper bass to eliminate “boomyness.”
- Tweeter attenuation switches (LCi-RTS_F/x & LCi-RTSc) engage a pass-band filter to compensate for overly reflective rooms, decreasing unwanted glare and harshness without decreasing the high-end frequencies.
- Solid/diffuse switch (LCi-RTS_F/x) affords greater placement flexibility for the surround effect you desire.

LCi-RTS_F/x

OVERALL DIMENSIONS:

21 13/16" H X 12" W X 4 1/4" D (55.3CM H X 30.5CM W X 10.8CM D)

OVERALL FREQUENCY RESPONSE 50Hz - 27KHz.

LCi-RTSc

OVERALL DIMENSIONS:

8 15/16" H X 15 5/8" W X 4" D (22.6CM H X 39.7CM W X 9.4CM D)

OVERALL FREQUENCY RESPONSE 50Hz - 27KHz.

SEE SPECIFICATIONS FOR MORE DETAILED PRODUCT INFORMATION.



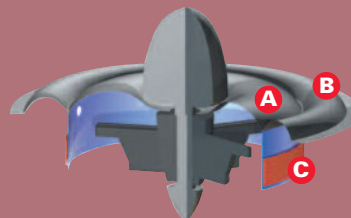
MATTE WHITE (PAINTABLE)

LCi-RTS_F/x

LCi-RTSc

RING RADIATOR TWEETER

The Ring Radiator Tweeter, usually found only in speakers costing thousands more than Polk speakers, gives the LCi Series its incredible accuracy and astonishing detail, to reveal the nuances of your favorite CDs, high definition discs and LPs. The ultra-light woven ring radiator diaphragm is supported at two hinge points (A & B) and is driven by a centrally positioned voice coil (C). With a higher ratio of supported material than conventional tweeters, there's less opportunity for performance-robbing resonance to develop. This remarkable tweeter delivers accurate high frequencies with precise detail and wide dispersion. See more about The Ring Radiator at www.polkaudio.com/catalog/technology/.



polk
technology

CUSTOM INSTALL LOUDSPEAKERS

	LCi-RTS105	LCi-RTS100
Driver Complement	2 - 5 1/4" (13.3cm) Aerated Polypropylene Dynamic Balance mid/bass drivers, 1 - 1" (2.5cm) Ring Radiator tweeter	2 - 5 1/4" (13.3cm) Aerated Polypropylene Dynamic Balance mid/bass drivers, 1 - 1" (2.5cm) Ring Radiator tweeter
Shape	rectangle	round
Frequency Response: Overall / -3db	50Hz - 27kHz / 80Hz - 26kHz	50Hz - 27kHz / 80Hz - 26kHz
Impedance	compatible with 4 Ohms outputs	compatible with 4 Ohms outputs
Recommended Amplification	10 - 250 Watts/channel	10 - 200 Watts/channel
Efficiency	92dB	92dB
Available Finish	matte white (paintable)	matte white (paintable)
Product Weight / Shipping Weight	12.5 lbs /16.60 lbs each (5.7 kg / 7.5 kg each)	12.5 lbs /17.0 lbs each (5.7 kg / 7.7 kg each)
Overall Dimensions (Depth measured from the deepest component to the back of the baffle)	21 7/8" H x 12" W x 3 11/16" D (55.56cm H x 30.4cm W x 9.4cm D)	14" Diameter x 8 3/4" Depth (35.6cm Diameter x 22.2cm Depth)
Depth assuming 1/2" Drywall	3 1/4" (8.25cm)	8 1/4" (20.6cm)
Cutout Dimensions	20 1/8" H x 10 5/8" W (51.12cm H x 27cm W)	12 1/2" Diameter x 8 3/4" Depth (31.8cm Diameter x 22.2cm Depth)
Features	Stud-Lock Mounting System, THX Ultra2 certified, Room Environment Controls	Stud-Lock Mounting System, THX Ultra2 certified, Room Environment Controls

CUSTOM INSTALL LOUDSPEAKERS

	LCi-RTSf/x	LCi-RTSc
Driver Complement	2 - 3 1/2" Diameter (8.89cm) Aerated Polypropylene Dynamic Balance driver cones, 1 - 6 1/2" Aerated Polypropylene Dynamic Balance driver cones, 2 - 3/4" Diameter (1.91cm) Ring Radiator tweeters	2 - 5 1/4" Diameter (13.34cm) Aerated Polypropylene Dynamic Balance driver cones, 1 - 1" Diameter (2.54cm) Ring Radiator tweeter
Frequency Response: Overall / -3db	50Hz - 27kHz / 80Hz - 26Hz	50Hz - 27kHz / 80Hz - 26Hz
Impedance	4 Ohms	4 Ohms
Recommended Amplification	10 - 250 Watts/channel	10 - 250 Watts/channel
Efficiency	88 dB	92 dB
Available Finish	matte white (paintable)	matte white (paintable)
Product Weight / Shipping Weight	10.75 lbs each / 36.8 lbs pair (4.88 kg each/ 16.69 kg pair)	8.7 lbs / 36.65 lbs each (3.97 kg / 10.73 kg each)
Overall Dimensions (Depth measured from the deepest component to the back of the baffle)	12" W x 21 13/16" H (30.5cm W x 55.3cm H)	15 5/8" W x 8 15/16" H (39.7cm W x 22.6cm H)
Depth assuming 1/2" Drywall	3 3/4" (9.5cm)	2 7/8" (7.3cm)
Cutout Dimensions	10 3/4" W x 20 1/4" H (27.31cm W x 51.5cm H)	13 1/8" W x 7 5/8" H (33.34cm W x 19.5cm H)
Overall Depth	4 1/4" (10.8cm)	3 3/8" (8.57cm)
Inputs	heavy duty spring loaded terminals	heavy duty spring loaded terminals

We're fanatics when it comes to providing you useful, accurate information that can help you evaluate our products. But as we all know, we live in an imperfect world. At least some of us do. That's why performance specifications and product dimensions are subject to change without notice. For the most current specifications see our website, www.polkaudio.com/home.

Polk Audio is a Directed Electronics company which trades on NASDAQ under the symbol DEIX. Investor information can be found at <http://investor.directed.com>.

Polk Audio, Polk, PowerPort, Dynamic Balance, F/X, Atrium, Big Speaker Sound Without The Big Speaker, High Velocity Compression Drive, Acoustic Resonance Control, ARC Port, Casket Basket, I-Sonic, SurroundBar & SDA are registered trademarks of Britannia Investment Corporation used under license by Polk Audio, Incorporated. Polk Audio Designs & miDock are trademarks of Britannia Investment Corporation used under license by Polk Audio, Incorporated.

POLK AUDIO

5601 METRO DRIVE
BALTIMORE, MD 21215

WWW.POLKAUDIO.COM

CUSTOMER SERVICE:
800-377-7655 (USA & CANADA)
410-358-3600 (WORLDWIDE)

COPYRIGHT© APRIL 2008
ALL RIGHTS RESERVED.



Free Manuals Download Website

<http://myh66.com>

<http://usermanuals.us>

<http://www.somanuals.com>

<http://www.4manuals.cc>

<http://www.manual-lib.com>

<http://www.404manual.com>

<http://www.luxmanual.com>

<http://aubethermostatmanual.com>

Golf course search by state

<http://golfingnear.com>

Email search by domain

<http://emailbydomain.com>

Auto manuals search

<http://auto.somanuals.com>

TV manuals search

<http://tv.somanuals.com>