

Polycom® PathNavigator™ Advanced Gatekeeper

IP and ISDN video conferencing made easy



Benefits

Easier for users – Minimizes technical support requirements

- Polycom OneDial™ makes dialing a video call as easy as dialing a telephone
- Point-click-dial from the Global Address Book
- Dial and receive calls from any IP media device through a firewall with Firewall Traversal Support
- Familiar telephone-like features: Call forwarding and Conference On-Demand

Simplified deployment – Enables rapid network deployment and scalability

- Automatic provisioning of ISDN numbers and alias' for quick system setup
- Automatic endpoint registration enables quick monitoring of and access to video systems

Automated management – Saves time, resources and cost

- Intelligent network routing enables calls to be transported via lowest-cost network
- Bandwidth management allows network bandwidth to be allocated per video system or per network zone
- Automatic IP to ISDN routing increases first call connects
- Integrate with Polycom Conference Suite™ to enable ad-hoc video calls if bandwidth and resources are available
- RTP statistics, including real-time graphs allow for easy monitoring of the health of a video network

Secure and reliable management system – Maintains high-quality video network

- Automatic identification and access-denial for unregistered video systems
- Redundant servers and Alternate Gatekeeper eliminate potential downtime

The premier advanced gatekeeper solution, Polycom PathNavigator makes IP and ISDN video communications as easy to use as your telephone.

With support for intelligent call routing, plus easy system deployment and bandwidth management, Polycom PathNavigator ensures reliability, security, and effective cost control.

Powerful features such as conference on demand, least-cost routing, alternate IP and ISDN routing, Firewall Traversal Support, and call forwarding make video conferencing easy enough for anyone to use. Tools to handle automatic endpoint registration, provisioning, and bandwidth management enable network administrators to be more productive. The Polycom PathNavigator intelligent network routing engine combines advanced features like ISDN number provisioning, gatekeeper functionality, RTP statistics and addressing for both IP and ISDN video calls, solving many network management issues.

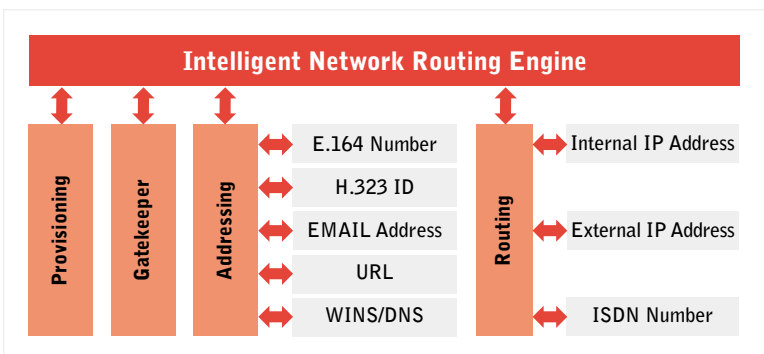
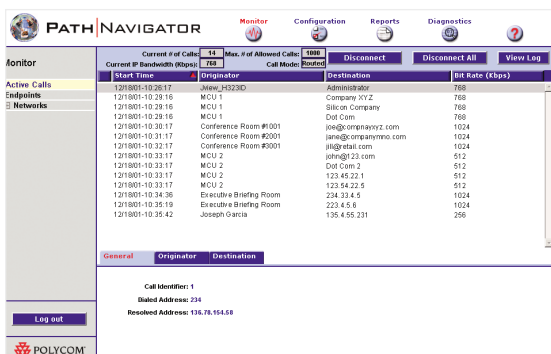
Polycom PathNavigator is designed to comply with industry standards and work with other network services and your existing network infrastructure including MCUs and gateways. PathNavigator provides administrators the tools they need to manage complex networks, while using fewer IT resources.

Features such as least cost routes, Video Call Center, firewall traversal, and IVR adds no cost to you and give greater caller flexibility. Alternate Gateway and Redundant server options also increase availability.

Your easy-to-manage choice to access the power of Polycom unified collaborative communications solutions.

With the greatest breadth and depth of integrated video, voice, and Web solutions, only Polycom delivers the ultimate communications experience. Our market-leading conferencing and collaboration technologies, supported by world-class service, enable people and organizations to maximize their effectiveness and productivity. Add to that the most experience and proven best-practices in the industry, and it's clear why Polycom has become the smart choice for organizations seeking a strategic advantage in a real-time world.





Simplified video communications for end users

Polycm OneDial™

Polycm OneDial hides all the complicated numbers, prefixes, codes, network choices (IP or ISDN), and steps processed to complete your call. Users select a name from a directory or enter a simplified phone number just like on a phone.

Conference On-Demand*

Polycm OneDial enables on-demand multipoint conference calls and enables any ViaVideo® II, iPower™, ViewStation® or V-Series system to dial multiple endpoints, turning any endpoint into a multipoint system.

*Requires Polycm MGC™

Firewall Traversal Support

Allows video/voice to pass freely through firewalls without compromising security

Simplified, cost effective management for network administrators

Policy management

Administrators can create policy management parameters to control bandwidth through segments of their video network, apply network policies, and provide access to resources based on individual, group, or corporate-wide settings.

Auto provisioning

Polycm PathNavigator allows for auto provisioning of DID (ISDN) and E.164 numbers for automated deployment of video endpoints.

Increased Availability and Security

Polycm PathNavigator flags all call attempts from unregistered endpoints and allows administrators to predetermine whether the calls are automatically denied access. Administrators can also keep NAT IP addresses confidential, preventing internal IP addresses from being accessed or sent outside the firewall.

Diagnostics and CDR

Polycm PathNavigator provides customizable diagnostic levels that can be applied globally, by device, or by call. It captures usage details for each call by device. The CDR enables internal reporting and billing for services by capturing date, time, duration, speed, number/address, and call direction. This data can also be exported in a CSV format.

Gatekeeper Authorization

Integrates with POLYCOM CONFERENCE SUITE to enables ad-hoc video calls only if bandwidth and resources are available

RTP Statistics

PathNavigator provides packet loss, jitter and latency over time to analyze health of a call in a video network. Real-time graphs also show issues at any point in time of a video network.

Supports Third-party Products

Polycm PathNavigator is based on H.323 V4 with open standards and supports third-party endpoints, gateways, MCUs, and other gatekeepers, which can be deployed as "neighbor gatekeepers."

Registrations License* Concurrent Calls

Registrations License*	Concurrent Calls
25	12**
100	30
500	150
3,000	600

*License Packs are additive.

**25-packs support 8 concurrent calls per pack.

As a convenience for MCU installations, a single 25-pack installed separately on a server will automatically support up to 12 concurrent calls. When adding a second, third or fourth 25-pack the total number of concurrent calls will revert to 15, 23, and 30 respectively.

Polycm PathNavigator comes with a 90-day maintenance support program providing for Software Update (Bug Fixes) and Upgrade (New Features) Releases as part of the product purchase. To continue to receive support and new product releases beyond 90 days, purchasing a maintenance contract is the most economical solution. Contact your Polycm Reseller or a Polycm Sales Representative for more details.

Server Requirements

Hardware Requirements

- 512 MB RAM (or more)
- 2 GB free hard drive space

License Specific Database and Hardware Requirements

Licensed Endpoints	Database Type	PathNavigator Server Hardware
25-seat	Microsoft® Access Microsoft SQL	Pentium® III 500 MHz
100-seat	Microsoft SQL	Pentium III 650 MHz
500-seat	Microsoft SQL	Pentium III 1.4 GHz
1500-seat	Microsoft SQL	Pentium III 1.4 GHz
3000-seat	Microsoft SQL	Pentium IV 1.9 GHz

Software Requirements:

- Windows Server 2003 (Service Pack 1)
- Windows 2000 Server (Service Pack 2 optional but recommended)
- Windows 2000 Advanced Server with Service Pack 1
- Microsoft Internet Information Services(TM) 5.0 or higher
- Microsoft Access™ or SQL 7.0 or higher*

* SQL must be installed on a separate server

Client Requirements

Software Requirements:

- Windows 98
- Windows ME
- Windows 2000
- Windows XP
- Internet Explorer 5.0 or higher

If using an external database, Polycm PathNavigator requires external database software and operating licenses in order to operate. These are NOT included with the Polycm PathNavigator software. Please check with Microsoft for specific server requirements.

©2004 Polycm, Inc. All rights reserved.

Polycm, the Polycm logo, ViaVideo and ViewStation are registered trademarks and Polycm PathNavigator, Polycm OneDial, MGC, Polycm Conference Suite and iPower are trademarks of Polycm, Inc. in the U.S. and various countries. All other trademarks are the property of their respective companies. Specifications are subject to change without notice.



Polycm Headquarters:

4750 Willow Road, Pleasanton, CA 94588 (T) 1.800.POLYCOM (765.9266) for North America only.
For North America, Latin America and Caribbean (T) +1.925.924.6000, (F) +1.925.924.6100

Polycm EMEA:

270 Bath Road, Slough, Berkshire SL1 4DX, (T) +44 (0)1753 723000, (F) +44 (0)1753 723010

Polycm Asia Pacific:

Polycm Hong Kong Ltd., Rm 1101 MassMutual Tower, 38 Gloucester Road, Wanchai, Hong Kong, (T) +852.2861.3113, (F) +852.2866.8028

Free Manuals Download Website

<http://myh66.com>

<http://usermanuals.us>

<http://www.somanuals.com>

<http://www.4manuals.cc>

<http://www.manual-lib.com>

<http://www.404manual.com>

<http://www.luxmanual.com>

<http://aubethermostatmanual.com>

Golf course search by state

<http://golfingnear.com>

Email search by domain

<http://emailbydomain.com>

Auto manuals search

<http://auto.somanuals.com>

TV manuals search

<http://tv.somanuals.com>