



Portable Digital MP3 Player

User's Manual



USB 1.1



JoyTone-U900

for Windows® 98SE/ME/2000 & XP
for Mac OS 9.X/10.X

- ※ The actual product may be different in design or color from what is shown in this manual.
- ※ Functions of the product are subject to change without notice for upgrade purpose.
- ※ Please read the manual before using the product.
- ※ Windows Media and Windows Media Logo are registered trademarks of Microsoft Corp.

Safety (FCC INFORMATION FOR USER)

This device complies with part 15 of the FCC Rules. Operation is subject to the following two conditions: (1) this device may not cause harmful interference, and (2) this device must accept any interference receives, including interference that may cause undesired operation.

CAUTION :

Any changes or modifications in construction of this device which are not expressly approved by the party responsible for compliance could void the user's authority to operate the equipment.

NOTE :

This equipment has been tested and found to comply with the limits for a Class B digital device, pursuant to Part 15 of the FCC Rules. These limits are designed to provide reasonable protection against harmful interference in a residential installation. This equipment generates, uses and can radiate radio frequency energy, if not installed and used in accordance with the instructions, may cause harmful interference to radio communications. However, there is no guarantee that interference will not occur in a particular installation. If this equipment causes harmful interference to radio or television reception, which can be determined by turning the equipment off and on, the user is encouraged to try to correct the interference by one or more of the following measures:

- Reorient or relocate the receiving antenna.
- Increase the separation between the equipment and receiver.
- Connect the equipment into an outlet on a circuit different from that to which the receiver is connected.
- Consult the dealer or an experienced radio/TV technician for help

For Canadian model

This class B digital apparatus complies with Canadian ICES-003.

For models having a power cord with a polarized plug:

CAUTION : TO PREVENT ELECTRIC SHOCK, MATCH WIDE BLADE OF PLUG TO WIDE SLOT. FULLY INSERT.

Modèle pour les Canadien

Cet appareil numérique de la classe B est conforme à la norme NMB-003 du Canada.

Table of Contents

Safety (FCC INFORMATION FOR USER)

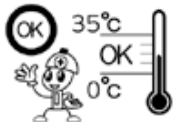
Table of Contents	1
1. Getting Started	3
1-1. Safety Warning	3
1-2. About U900	5
1-3. Package Contents	7
1-4. Tour of U900	8
1-5. Summary of Basic Control	12
2. Connecting to PC	13
2-1. Installing Joy Tone Manager (for Font & Firmware Upgrade)	13
2-2. Software Installation	15
2-3. Connecting to PC	16
2-4. File Management	18
1. Uploading/Downloading Files	18
2. Removing USB Connection	19
3. Basic Functions	20
3-1. Basic Operation	20
1. Changing Mode	20
2. Navigation	20
3. Deleting Folders/Files	22
4. Menu Functions	23
5. Hold	23
3-2. Listening to Music	24
3-3. Listening to FM	26
3-4. FM Recording	29
3-5. Voice Recording/In-line Encoding	30

Table of Contents

4. Useful Features	31
4-1. Playlist (m3u support)	31
4-2. Creating a Playlist	32
4-3. Formatting	32
4-4. Joy Tone Manager Program	33
5. Menu Configuration	40
5-1. Menu Structure	40
5-2. Configuring Menu in Playback Mode	41
5-3. Configuring Menu in FM Mode	47
6. Miscellaneous	49
6-1. Inserting a Battery	49
6-2. Troubleshooting	50
6-3. Technical Specification	51

1-1 Safety Warning

- ※ This section contains important information on your health and safety.
- ※ Please read it carefully before using the product.



Do not store your player where the temperature is above 35°C or below 0°C.



Avoid storing your player in moist area.



Do not drop your player, allow external shock or leave it near a magnet.



Avoid contact with such chemicals as benzene or thinner, which can peel off the paint.



Do not attempt to disassemble, repair or modify your player.



Avoid where there is excessive dust or soot.

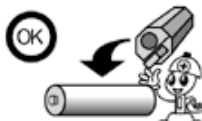


Avoid direct sunlight or heat.

1-1 Safety Warning



Do not have foreign substance go into your player.



Remove the battery when the product is not in use for a long period of time.



Use the necklace with caution, which might get caught in doors to cause physical injury.

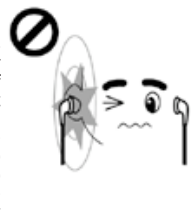


Be cautious that falling down with the product in the pockets of your clothes could result in bruise or fracture.

※ Warning on Use of Earphones



▶ Road Safety
Do not use earphones while driving, cycling, or operating any types of motorized vehicles. It creates traffic hazard and is illegal in some areas. It is also potentially dangerous to use earphones while walking, especially at pedestrian crossings.



▶ Preventing Hearing Damage
Do not use earphones at high volume for a prolonged period of time. It can seriously impair your hearing ability. If you experience a ringing in your ear, reduce the volume or stop using the product.



■ Luxurious Design

The exquisite octagonal design of U900 is simple, but luxurious.



■ Multi-Codec Player

Plays MP3 and WMA files.



■ FM Tuner

Auto memory, preset up to 20 stations, and selectable FM frequency by country.



■ FM Recording

Records FM broadcasting to MP3.



■ High-Sensitive Voice Recording

The high-sensitive microphone on U900 helps you catch any urgent recordings instantly (quick recording).



■ Direct Encoding

Record and convert CD or cassette music directly into MP3 from ENC jack without PC.



■ Built-in USB Connector

No need for USB cable anymore. U900 has a built-in USB connector.



■ Removable Storage Device by Plug & Play

Use Windows Explorer to copy and delete files.



■ My Sound System

Create your own sound effect using 3D Sound, bass and treble for realistic sound and perfect tune.



■ Convenient Navigation

Easy to save and search files.



■ Supports Playlist

U900 supports up to 5 playlists or m3u files.



■ Firmware Upgradeable

Upgrade features and functions of U900 by simply upgrading the firmware of U900



■ Maximum 12 hours of Playing Time

U900 presents maximum 12 hours of music enjoyment on one AAA battery.

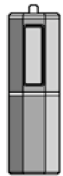


■ Multi-Language Support

Supports Korean, Chinese, English, Japanese, European languages and others

1-3 Package Contents

Basic Contents



JoyTone-U900



USB Cable



LINE-IN Cable



High-quality Earphone



AAA Battery



User Manual



Installation CD



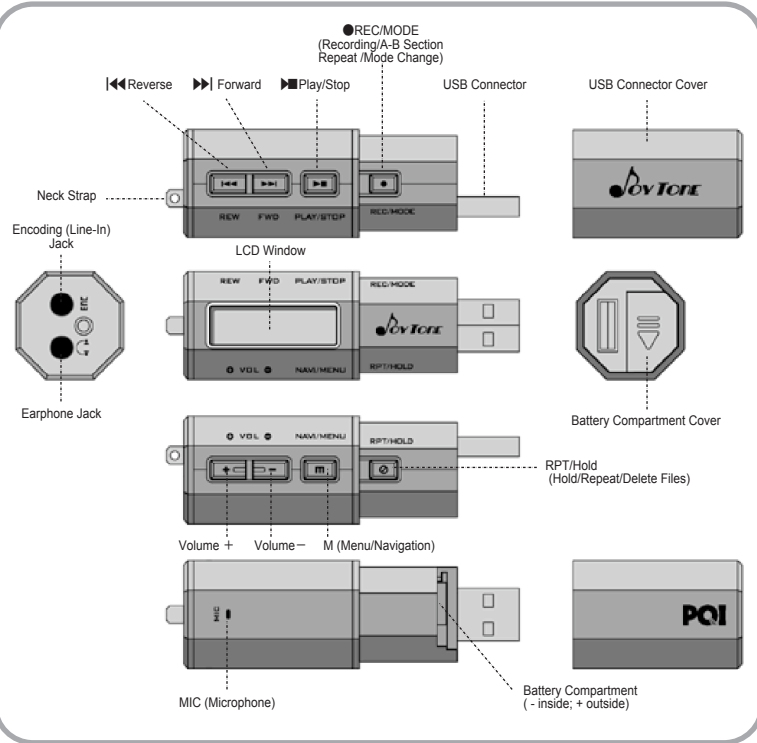
Necklace

Note

※ The design of the basic contents and the optional items may be changed without prior notice for product upgrade.

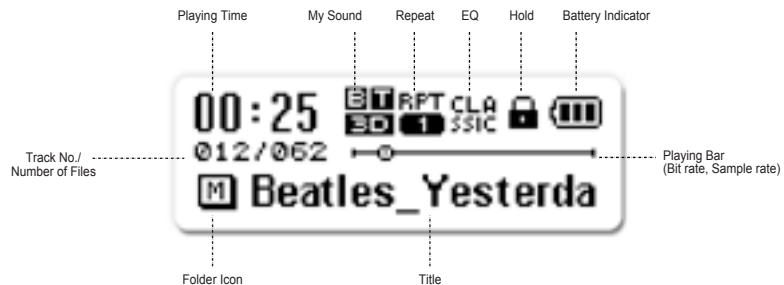
1-4 Tour of U900

1. Main Unit

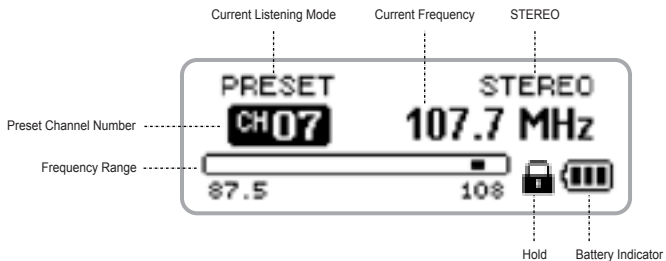


2. LCD Overview

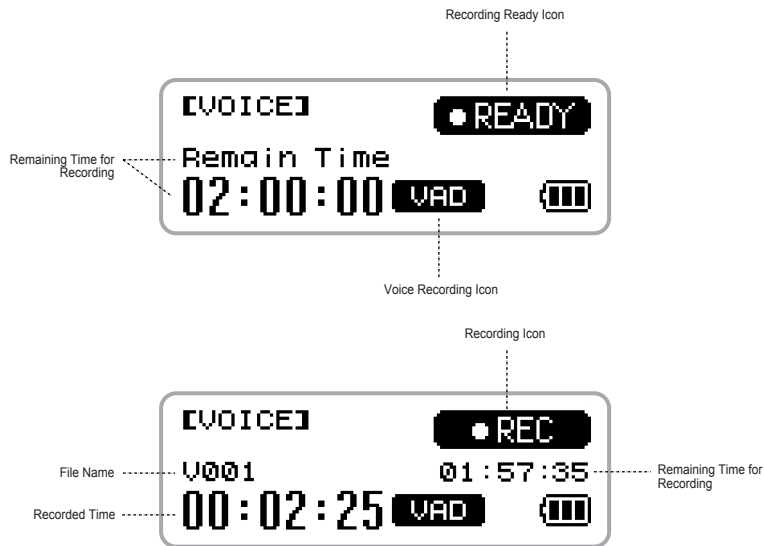
Music Playback Mode



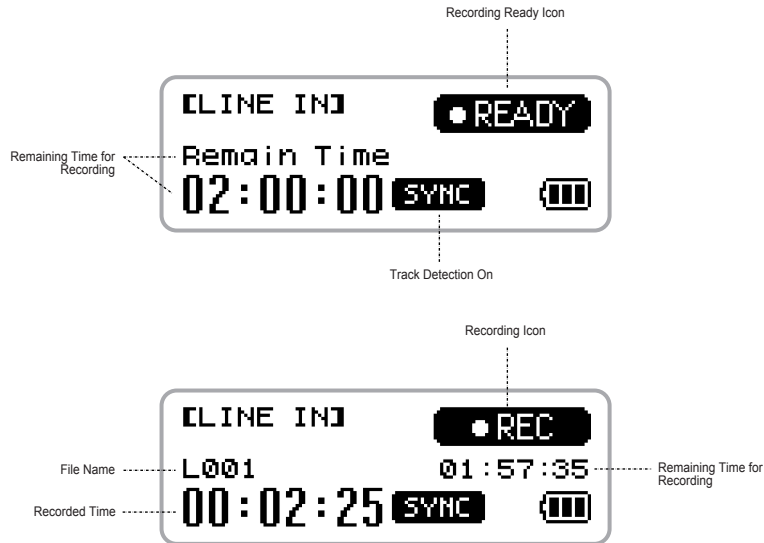
FM Mode



Voice Recording



Line-in Recording



Button	Action	Music Mode			Recording Mode		FM Mode	
		When Playing	At Stop	Menu/Navigation	Stop	Recording	FM	Recording
▶	Short	Stop	Play	Play	Play	Pause	STEREO ON/OFF	Pause
	Long	Power OFF		-	Power OFF		Power OFF	
▶▶	Short	Play next track	Move to next track	-	Move to next track	-	Change frequency /station	-
	Long	Fast Forward	Fast forward search through tracks	-	Fast search through files	-	AUTO SCAN +	-
◀◀	Short	Within the first 5 sec.: move to the previous track After the first 5 sec.: Move to the beginning of the current track	Move to the previous track	Move to upper menu/ folder	Move to the previous file	-	Change frequency /station	-
	Long	Fast Forward	Fast reverse search through tracks	-	Fast backward search through files	-	AUTO SCAN -	-
+		Volume up		Move left	Volume up	-	Volume up	-
-		Volume down		Move right	Volume down	-	Volume down	-
M (Menu)	Short	Change to Navigation mode		Select/Play	Change to Navigation mode		-	-
	Long	Change Menu		Exit Menu	Change Menu		-	Change Menu
⊘ RPT/HOLD	Short	Change Repeat option		Delete	Change Repeat option		-	Change preset / frequency
	Long	Hold ON/OFF		-	Hold ON/OFF		Hold ON/OFF	
● REC/MODE	Short	A-B Section repeat	Start recording	-	Start recording	Stop recording	Start recording	Stop recording
	Long	Mode change (Music, Recording, FM)			-	Mode change	-	Mode change

System Requirements

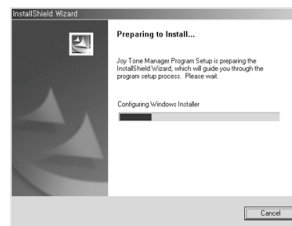
※ Your PC should satisfy the following requirements to install the program :

- Pentium 133MHz or faster
- Windows 98SE/ME/2000/XP
- 20MB of free hard disk space
- CD-Rom Drive
- USB Port (1.1)
- Windows 2000 users must log in as an administrator to install the driver.

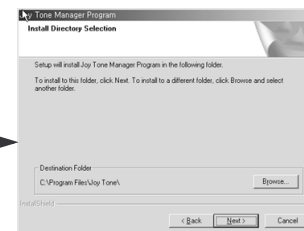
1. Insert the installation CD into the CD-Rom drive.

The CD will start running automatically. Please follow the instruction that appears and click Next to proceed.

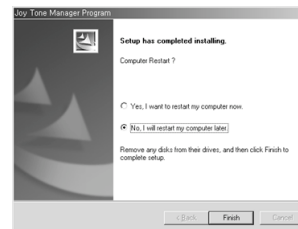
2. Click NEXT in the windows that appear afterward to finish the installation.



<Installation>



Select the folder to install the Joy Tone Manager, and click Next.



Check Yes and click Finish to reboot your PC.

Caution ※ Windows ME/2000/XP users can upload or download files without the Joy Tone manager, but to install font and firmware, the manager must be installed.

※ Windows 98 users must install the USB driver to use U900 as a removable storage. (Refer to page 15 for installing the driver.)

2-2 Installing USB Driver for Windows 98

1. Insert the CD into the CD-Rom drive.
2. Connect U900 to the USB port on your PC, and the following windows will appear.



1. Click Yes when the device installation wizard window appears.



2. Check "Search for the driver (recommended)", and click Next.



4. When the driver is found, click Next.



3. Check "Select the folder to be searched" and go to D:\Driver\Win98 Mass Storage Driver.



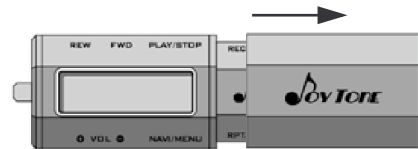
5. After installation is complete, click Finish.

Note

Windows 98/ME users who install the Joy Tone Manager do not have to install the USB driver separately.

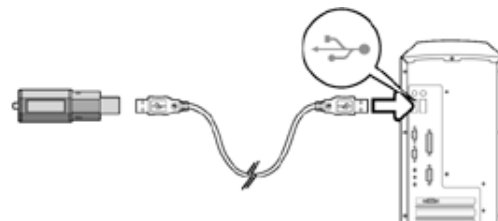
2-3 Connecting to PC

1. Detach the USB cover.



2. Connect the player to your PC (you do not have to turn the power on.)

- If prompted, reboot your PC.



3. After showing a message, "looking for a new device," the connection will be established. The installation windows may not appear.

Caution

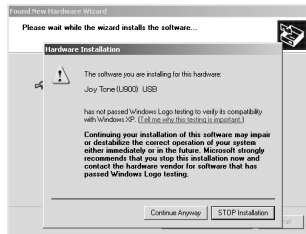
※ Connecting USB during music playback or other operation may cause a malfunction. Stop any playback, or operating your player before the USB connection is made.

In Windows XP

※ The following windows will appear when U900 is connected to PC.



1. Click Next in the Hardware Search Wizard window



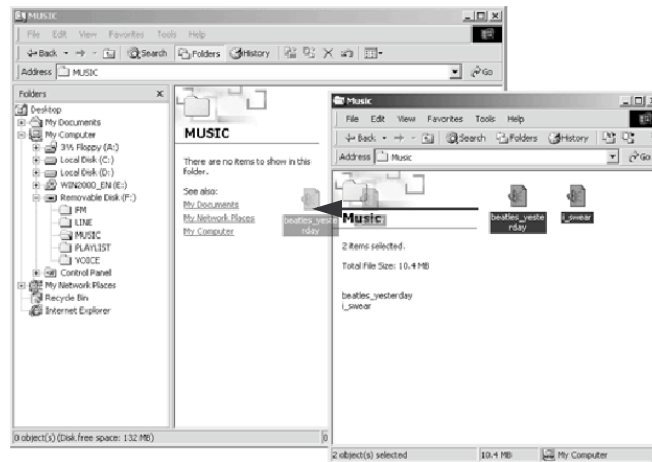
2. Click Next when Hardware installation window appears



3. Click Finish after new hardware search is done.

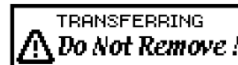
1. File Download/Upload

- After connecting the player to PC, double-click "My Computer."
- Select "Removable Disk".
- Select the files you want to transfer, and drag and drop them into Music folder.



Caution

- ※ Music files must be stored in Music folder.
- ※ Never disconnect the USB cable when the following message appears on LCD.



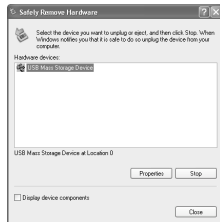
2-4 Managing Files as a Removable Storage Device

2. Removing USB Connection from PC

- Double-click the Eject Hardware icon on the Windows task bar, and stop the device before removing the USB device from your PC.



- Select Stop USB Mass Storage Device from the popup menu, and follow the instruction to safely remove the player from your PC.

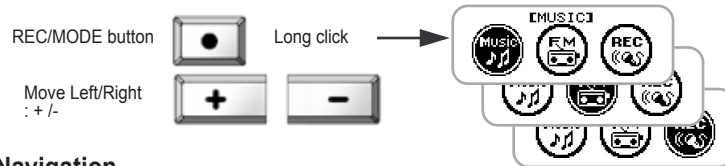


Caution ※ Follow the instruction above to prevent damage to data and your PC.

3-1 Basic Operation

1. Changing Mode

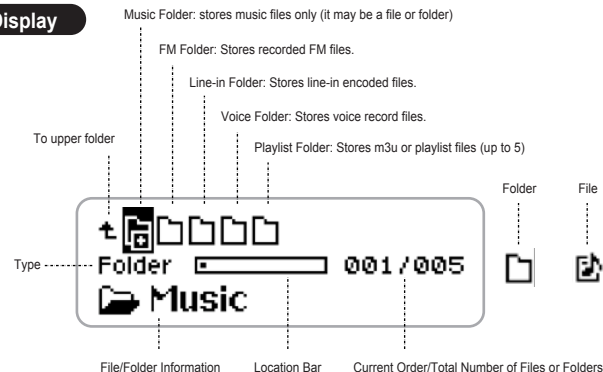
- Pressing REC/MODE long will change mode in the order of MUSIC-FM-RECORDING. Use “-” and “+” to move left and right, and “M” to select.



2. Navigation

- Pressing M button short will start Navigation feature.
 - Use + and - buttons to move left and right, and press M short to select.
 - Use ◀◀ button to move to upper folder.
- Press the M button long to finish Navigation mode.

Navigation Display



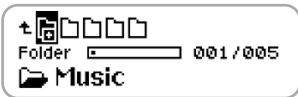
Listening to Music using Navigation

NAVI button



Press Short

Open the Navigation display



Move to a folder using +/- buttons.



Press Short

Move to a sub-folder.



Select a folder/file using +/- buttons.



Press Short

Play the selected song.

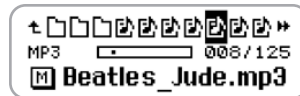


3. Deleting Files

- Press M button short to open Navigation.



- Move to the file you want to delete using + and - buttons.



- Press RPT/HOLD button, and the message, "Are you sure to delete", will appear. Choose Yes using + or - button, and press M to confirm your selection.



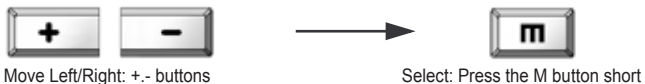
Caution ※ You cannot delete a folder.



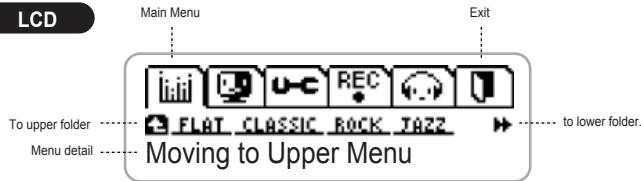
3-1 Basic Operation

4. Menu

- Press M button long to open Menu.
 - Use + and - buttons to move left and right, and press M short to select.
 - Use ◀ button to move to upper folder.
 - Press M button long again to close Menu.

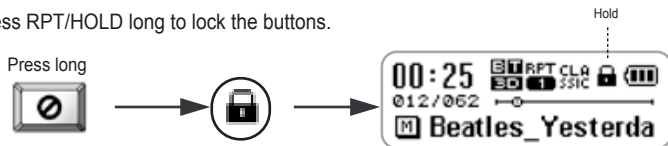


LCD



5. Hold

- Press RPT/HOLD long to lock the buttons.



Note

※ Auto Hold will lock the buttons automatically after power off. You can select this option in Menu.



3-2 Listening to Music

1. Power On/Off



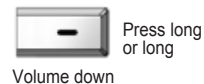
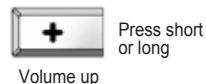
2. Selecting the Next Song and Fast Forward within a Track



3. Selecting the Previous Song and Fast Reverse within a Track



4. Volume (adjustable from 0 to 30)



5. Changing Repeat Option

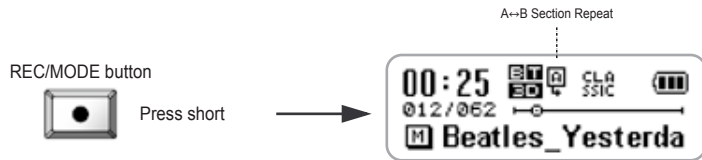
- Press RPT/HOLD short each time to change the repeat option in the order of (no display) → RPT 1 → RPT D → RPT A → RND D → RND A → INT.



- (no display) : Plays entire collection and stops.
- RPT 1 : Repeats current track continuously.
- RPT D : Repeats all tracks in a folder continuously.
- RPT A : Repeat all tracks continuously.
- RND D : Plays the tracks in a folder in random order and stops.
- RND A : Plays all tracks in random order and stops.
- INT : Plays the first 10 seconds of each track.

6. A↔B Section Repeat

- During playback, press REC/MODE short to mark a starting point (A) and once again to mark an ending point (B) of a section you want to repeatedly listen to. Pressing it third time will turn off the section repeat option.



- ※ Press REC/MODE long to change to FM mode. (Press M button to select.)



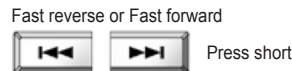
1. Stereo/Mono

- While listening, press PLAY/STOP short to toggle between stereo and mono.



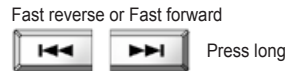
2. Tuning

- Use |<<< and >>>| to change FM frequency.



3. Using Auto Scan

- Press |<<< or >>>| long to start auto scan backward or forward.



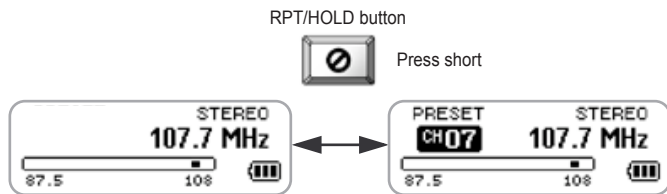
Note

※ You can configure the unit of frequency change in Menu (refer to page 39 "5. Frequency Unit")

3-3 Listening to FM

4. Preset/Manual Tuning

- Press RPT/HOLD short either to listen to the presets or to tune frequency manually.



5. Listening to Preset Stations

- Press **⏮** or **⏭** buttons short to change the preset station.



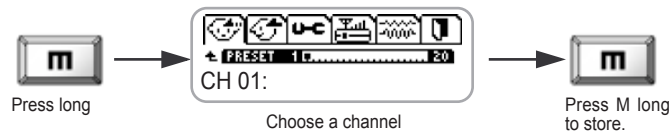
Note

※ Auto scan is not supported in preset mode.

3-3 Listening to FM

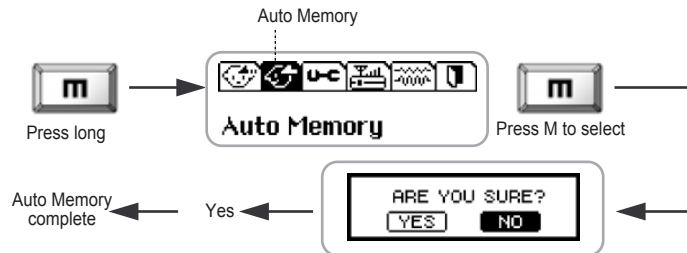
6. Presetting Radio Stations (up to 20 stations)

- Tune to desired FM frequency.
- Press M button long to open Menu, and select Memory. Choose a channel number to store the station, and press M long to store.



7. Automatic Presetting (Auto Memory)

- Tune and preset automatically.
- Press M long to open Menu, and select Auto Memory to start automatic presetting.



Caution

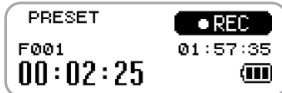
※ Executing Auto Memory will replace the previously stored stations with the new selections.

3-4 FM Recording

1. Recording FM

- While listening to FM, press REC/MODE to start recording.

REC/MODE



2. Pausing Recording

- While recording, press PLAY/STOP to pause, and again to resume.

PLAY/STOP



Press short

3. Finishing Recording

- While recording, press REC/MODE to stop.

REC/MODE



Press short

4. Playing Recorded Files

- To play the recorded files, change the mode to Music mode, select a file you want to play in the FM folder and play. (Use NAVI function to search a desired file. Refer to page 20 "2. Navigation")

Note

- ※ FM is recorded in the FM folder as MP3. e.g.) F000.mp3
- ※ The compressed rate of a recorded file can be changed in Menu.
- ※ You cannot adjust volume while recording.

3-5 Voice Recording/Line-in Encoding

- ※ Either change to Recording mode by pressing REC/MODE button long, or press REC/MODE in Music mode.

1. Starting Recording

- Press REC/MODE short to start recording.



Press short

2. Pause

- Press PLAY/STOP to pause, and again to resume.

3. Finishing Recording

- While recording, press REC/MODE to stop.

4. Playing Recorded Files

- Press PLAY/STOP to play a recorded file, or change to Music mode and select a recorded file you want to play in the Recording folder. (Use NAVI function to search a desired file. Refer to page 20 "2. Navigation")

Note

- ※ Connect other music device to ENC terminal to start in-line encoding.
- ※ Voice record will be stored in Voice folder as MP3. e.g.) V000.mp3
- ※ Line-in encoding will be stored in Line folder as MP3. e.g.) L000.mp3



PLAY/STOP



Press short

REC/MODE



Press short

4-1 Playlist (m3u support)

※ U900 supports playback of m3u
(up to five m3u files are supported.)

1. Move the m3u files created in PC to the Playlist folder.

2. Selecting m3u.

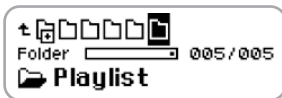
- Press Navi button short to start Navigation and move to the Playlist folder.



Press short



Press short



※ Playlist folder



※ m3u file



Press short

- Select a playlist, shown as P, in the Playlist folder.

3. Canceling Playlist Playback

- Press NAVI button short to start Navigation, and select other music file. This will automatically cancel playlist playback.

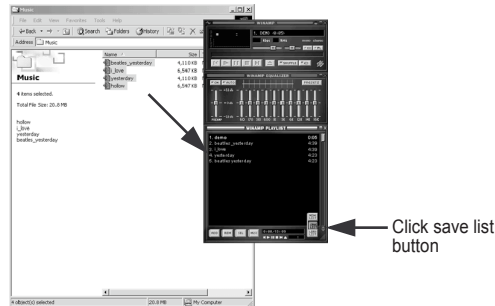
Note

- ※ If a music file is not stored in the player, but its name is listed in a playlist, it will be skipped when the playlist is selected for playback.
- ※ A playlist must be stored in the Playlist folder to play.

4-2 Creating a Playlist

1. Connect the player to your PC, and run the Windows Explorer and Winamp.

2. Drag music files from the player (removable disk), and drop it in the playlist window of Winamp. Click Save List button located at the bottom right corner of Winamp.



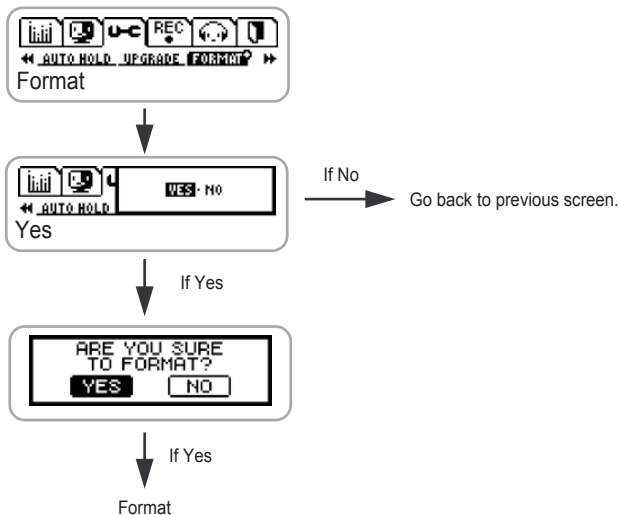
3. When the Save Playlist window appears, save the list as m3u.



4-3 Formatting

1. Formatting in the Player

- Turn on U900.
- Press M button to open Menu, and select System Configuration and then Format.



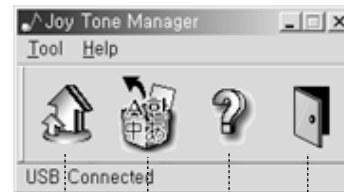
4-4 Joy Tone Manager Program

You can upgrade firmware and download fonts using the Joy Tone manager program.

Manager Program



Manager Program icon



FirmwareUpgrade

FontDownload

information

Exit

Caution

- ※ Format must be done in the player.
- ※ Formatting in your PC may cause a malfunction.
- ※ Formatting will reset the player to default state with default folders (Music/FM/Line/Voice/Playlist folders)

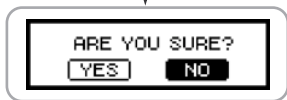
4-4 Joy Tone Manager Program

Firmware Upgrade

Firmware upgrade keeps your player up to date.

1. Turn on U900

- Press M button to open Menu, and select System Configuration → Firmware Upgrade.

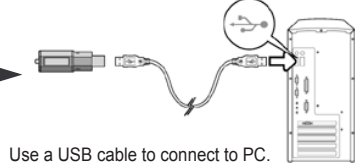


If No → Go back to previous screen.

If Yes



Connect the player to PC.



The player is connected to PC.

Download from Www.Somanuals.com. All Manuals Search And Download.

4-4 Joy Tone Manager Program

2. Download the upgrade file from internet.

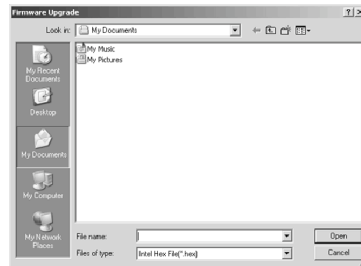
- Download the upgrade file from "www.pqi.com.tw"

3. Run the Joy Tone manager.

- Click the firmware upgrade icon.



- Search and select the downloaded upgrade file.

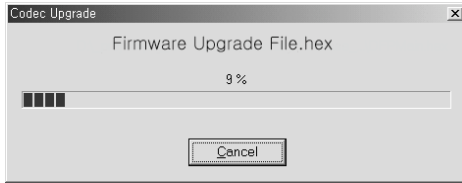


Note

※ Refer to page 13 for installing U900 driver.

4-4 Joy Tone Manager Program

- Upgrade will take place automatically.



Font Download

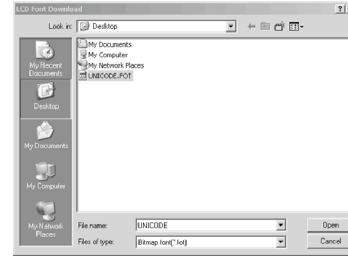
Use "Font Download" function to restore the fonts deleted by formatting the player. Run "Font Download" when the fonts are not shown correctly.

- Run the Joy Tone manager, and click "Font Download" icon.

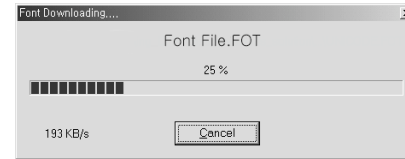
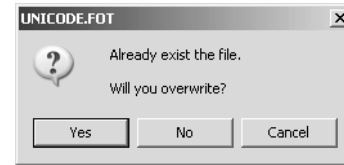


4-4 Joy Tone Manager Program

- Download a font file into the removable disk.



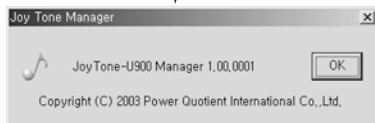
- Click Yes to overwrite the existing data.



4-4 Joy Tone Manager Program

Information

- Click '?' icon to see information on Joy Tone Manager.



Exit

- Exit the Manager.



5-1 Menu Structure

※ Menu contains two modes: Music Mode & FM Mode

Music Mode

PRESET EQ	Go To Upper Menu	
	Flat	
	Classic	
	Rock	
	Jazz	
	Pop	
	Live	
	User's EQ	
DISPLAY	Go To Upper Menu	
	File/Tag	File, Tag
	Time	Normal, Remain
	Scroll	X1, X2, X4, Vertical, Horizontal
	LCD	Playing Bar
	Language	Bitrates/Sampling Freq
		Korean, Japanese, English/EU
		Chinese(S), Chinese(T)
SYSTEM	Go To Upper Menu	
	Beep	On, Off
	Resume	Beginning, Last Point
	Sleep	Off, 10Min-120Min
	Stop Power OFF	30Sec, 1Min, 2Min, 5Min, 10Min
	Backlight	Off, 1Sec-10Sec, On
	Contrast	Level 1-Level 20
	System Reset	Yes, No
	Start With Hold On	On, Off
	Firmware Upgrade	Yes, No
	Format	Yes, No
	Battery	Alkaline, Rechargeable
	Player Info	
RECORDING	Go To Upper Menu	
	Voice B/R	32Kbps, 64Kbps, 96Kbps, 128Kbps, 192Kbps
	Line B/R	32Kbps, 64Kbps, 96Kbps, 128Kbps, 192Kbps
	FM B/R	32Kbps, 64Kbps, 96Kbps, 128Kbps, 192Kbps
	VAD	On, Off
	Sync	Sync Off, Sync1, Sync On
MY SOUND	Go To Upper Menu	
	User's EQ	<Graphic reference>
	3D	Off, Low, Middle, High
	Bass	Off, Level 1-Level 5
	Treble	Off, Level 1-Level 5

FM Mode

MEMORY	Go To Upper Menu	
	Preset 1-Preset 20	
AUTO MEMORY	Yes, No	
SYSTEM	Go To Upper Menu	
	Beep	On, Off
	Sleep	Off, 10Min-120Min
	FM B/R	32Kbps, 64Kbps, 96Kbps, 128Kbps, 192Kbps
	Backlight	Off, 1Sec-10Sec, On
	Contrast	Level 1-Level 20
	Player Info	
FM BAND	Go To Upper Menu	
	US/EU/KOR/CHN, JAPAN	
FREQUENCY UNIT	Go To Upper Menu	
	100KHz, 50KHz	

Menu Setup

1. Opening Menu

- Press M (Menu/Navigation) long to open Menu.



2. Moving Through Menu Options

- Use +/- buttons to move up and down.



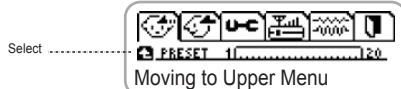
3. Selecting a Menu Option

- Press M (Menu/Navigation) short to select a Menu option.



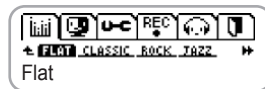
4. Moving to Upper Menu / Exiting Menu

- Use |<<< button or select the upper menu icon.



1. Preset EQ

- Selects a preset EQ
· [Flat],[Classic],[Rock],[Jazz],[Pop],[Live],[User's EQ]
· Default : [Flat]



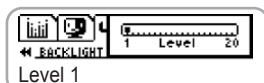
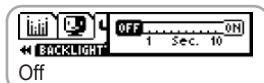
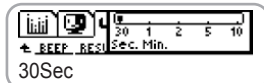
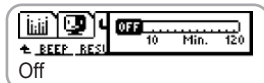
2. Display

- File/Tag
· Displays file name or tag information.
· Default : [File]
- Time
· Displays elapsed playing time (Normal) or remaining playing time (Remain).
· Default : [Normal]
· Playing time for a VBR (Variable Bit Rate) file might display correctly.
- Scroll
· Sets up the scrolling speed of tag information or file name.
· Default : [X1]
- LCD
· Users can choose to display playing bar, bit rate, or sampling frequency information.
· Default : [Playing Bar]
- Language
· Sets up language for OS in which a music file is created.
· Default : [English]

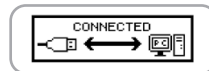
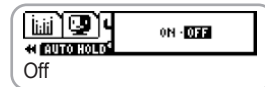


3. System

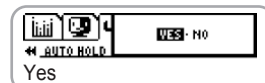
- **Beep**
 - Beep on/off
 - Default : [On]
- **Resume**
 - Resume from beginning or last point
 - Default : [Last Point]
- **Sleep**
 - Sleep timer (setup by 10 min interval)
 - Default : [Off]
- **Stop Power Off**
 - Sets up time for automatic power off when inactive.
 - Default : [1 Min]
- **Backlight**
 - Sets up time for the back light to be on.
 - Default : [5 Sec]
- **Contrast**
 - Sets up LCD contrast (level 1 ~ 20)
 - Default : [Level 11]
- **System Reset**
 - Resets to the factory default state.



- **Start With Hold On**
 - Sets up Auto Hold on or off. When it is on, Buttons get locked when power becomes off.
 - Default : [Off]
- **Firmware Upgrade**
 - Upgrades functions of the player.
 - Default : [No]
 1. Turn the power on.
 2. Select MENU-SYSTEM-UPGRADE
 3. Connect to PC.
 4. Run the Joy Tone Manager.
 5. Click Firmware Upgrade to complete upgrade.



- **Format**
 - Formats the player
 - All menu or system setups are retained.
 - Default : [No]
- **Battery**
 - Sets up the type of battery used for precise measurement on its capacity.
 - Default : [Alkaline]
- **Player Info.**
 - Shows player information.



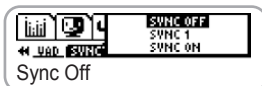
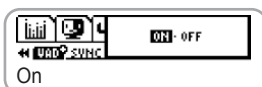
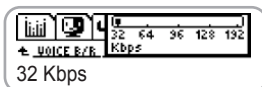
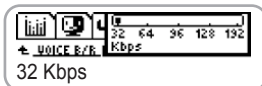
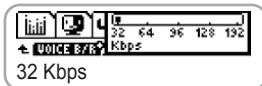
Caution

- ※ Refer to page 35 for detailed information on firmware upgrade
- ※ Refer to page 33 for more information on format.
- ※ All data will be lost after formatting.
- ※ Turning the power on after formatting will reinstate the default folders only.
- ※ The basic setups and version are retained.

5-2 Music Mode

4. Recording

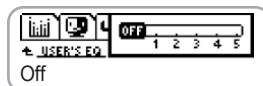
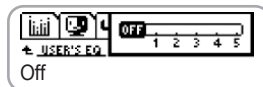
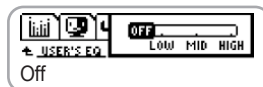
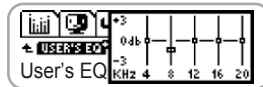
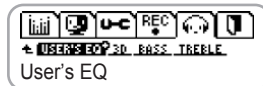
- Voice B/R
 - Sets up bit rate for voice recording
 - Default : [32Kbps]
- Line B/R
 - Sets up bit rate for line-in encoding
 - Default : [128Kbps]
- FM B/R
 - Sets up bit rate for FM encoding
 - Default : [32Kbps]
- VAD (Voice Activity Detection)
 - With this feature on, voice recording takes place when only voice is detected.
 - When it is off, recording continues until it is stopped.
 - Default : [Off]
- Sync
 - Detects tracks and separates recording into a single file automatically.
 - Sync Off : records as a single file
 - Sync 1 : records a single file and stops
 - Sync On : automatically converts each track into a single file and stops.
 - Default : [Sync Off]



5-2 Music Mode

5. My Sound

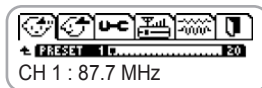
- User's EQ
 - Adjustable 5-band EQ
 - Move between the bands : ◀ / ▶ (Move left/right)
 - Adjust the frequency : + / - (Move up/down)
 - Select : M button
- 3D
 - [Off], [Low], [Middle], [High]
 - Sets 3D sound on or off.
 - Default : [Middle]
- Bass
 - Off / Level 1-5
 - Adjusts bass intensity.
 - Default : [Level 3]
- Treble
 - Off / Level 1-5
 - Adjusts treble effect.
 - Default : [Off]



5-3 FM Mode

1. Memory

- Stores up to 20 preset radio stations.
(CH1~CH20)



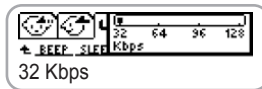
2. Auto Memory

- Automatically tunes and stores radio stations.



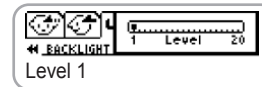
3. System

- Beep
 - Sets beep sound on or off.
 - Default : [On]
- Sleep
 - Sleep timer. (Adjustable by 10min)
 - Default : [Off]
- FM B/R
 - Sets up bit rate for FM recording.
 - Default : [32Kbps]
- Backlight
 - Sets up time for the backlight to be on.
(Adjustable by sec)
 - Default : [5Sec]



5-3 FM Mode

- Contrast
 - Sets up LCD contrast.
 - Default : [Level 11]



- Player Info.
 - Shows player information such as the total memory size, available memory, firmware version, and etc.



4. FM Band

- Sets up FM band by country.
 - [US/EU/KOR/CHN], [JAPAN] (two bands)
 - Default : [US/EU/KOR/CHN]



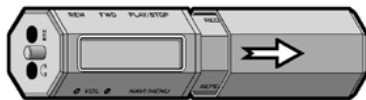
5. Frequency Unit

- Sets up the frequency-tuning unit.
 - Default : [100KHz]

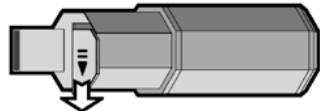


6-1 Inserting a Battery

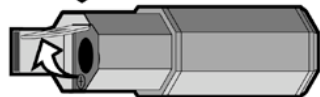
1. Pull out the USB cover to remove it. ①



2. Push the battery compartment cover in the direction of the arrow shown in the picture. ②



3. Push it up to open the door. ③



4. Insert a AAA battery, - inside. ④



Note

- ※ Make sure + and - locations before inserting a battery.
- ※ Remove the battery when the player is not in use for a prolonged period of time to prevent damage by corrosion.

6-2 Troubleshooting



No power

- Check whether the battery has been inserted correctly.
- Check whether HOLD is on. (If it is on, set it off.)



Power gets turned off automatically

- Check if Sleep or Auto Off is set on.



No Sound

- Check if earphone is connected to line-in jack.
- Check if volume is at 0.



Noise

- Check for any foreign substance on earphone jack.
- Corrupted MP3 or WMA files may cause a static noise and produce interrupted sound. Check for any file corruption.



Buttons do not work

- Check if HOLD is on. If it is on, turn it off.



No backlight

- Check the Menu setup for backlight option.



Download Failure

- Check if USB is correctly and securely connected.
- If you are using Windows 98, the USB driver must be installed.



Playing time is not displayed properly

- Files with VBR may not display playtime properly. This is normal.

6-3 Technical Specification

Model	JoyTone-U900	
Supported File Format	MPEG1,2,2.5 Layer3(32Kbps~320Kbps), WMA(32Kbps~192Kbps)	
Dimension	Power	1.5V AAA (alkaline) x 1
	Size	25×80×25mm(W×H×D)
	Weight	33g (without battery)
	Material	Plastic
FM	FM	87.5~108.0 (US/EU/KOR/CHN) 76.0~91.0 (JAPAN)
	Earphone Output	10mW(L) + 10mW(R) (16 ohm at max volume)
	SN	50 dB<
	Audio	Output Frequency 20Hz~20KHz
Audio	Earphone Output	10mW(L) + 10mW(R) (16 ohm at max volume)
	SN	95 dB<
Battery Life	12 hours	
USB	Supports 1.1	
Operational Temperature	0°C~ +35°C	
Language	Supports 35 languages(Unicode)	

Free Manuals Download Website

<http://myh66.com>

<http://usermanuals.us>

<http://www.somanuals.com>

<http://www.4manuals.cc>

<http://www.manual-lib.com>

<http://www.404manual.com>

<http://www.luxmanual.com>

<http://aubethermostatmanual.com>

Golf course search by state

<http://golfingnear.com>

Email search by domain

<http://emailbydomain.com>

Auto manuals search

<http://auto.somanuals.com>

TV manuals search

<http://tv.somanuals.com>