

**Dynamic DX  
Specialty Controls Remote  
(SCR)**



***Basic Operation Instructions***

## **IMPORTANT NOTICE**

This manual describes basic operation for the Dynamic DX Specialty Controls Remote (SCR) only and must be read in conjunction with the owner's manual supplied with your power chair. Please read both manuals in their entirety before operating the SCR or your power chair.

This manual is intended as a supplement to the in-service training provided by your authorized provider. If you have any questions or problems regarding the SCR, please contact your authorized provider.

Copyright © 2001  
Pride Mobility Products Corporation

## TABLE OF CONTENTS

<b>INTRODUCTION</b> .....	4
Dynamic DX Specialty Controls Remote (SCR) .....	4
<b>SCR CONTROLS</b> .....	6
<b>STANDARD MODE CONFIGURATION</b> .....	6
Driving in Standard Mode Configuration .....	6
<b>TIMEOUT FUNCTION</b> .....	7
<b>SEAT CONTROL</b> .....	7
Tilt Mode .....	7
Recline Mode .....	8
Left Leg Rest Mode .....	8
Right Leg Rest Mode .....	9

## **INTRODUCTION**

Welcome to Quantum Rehab, a Division of Pride Mobility Products Corporation. Quantum Rehab is dedicated to the customization of power chairs for users with advanced rehabilitation and mobility issues. Quantum Rehab also expands possibilities for enhanced healthcare attendant control over power chair functions to provide a secondary level of support for our customers where necessary.

### **The Dynamic DX Specialty Controls Remote (SCR)**

The Dynamic DX Specialty Controls Remote (SCR) allows users to control a wide range of on-chair and off-chair functions. SCR units come pre-programmed in the Standard Mode Configuration explained in this manual, but are not limited to it. Please contact your authorized provider for more information on programming alternatives.

The SCR is used in conjunction with input devices such as joysticks, touch pads, lap trays, head arrays, Buddy Buttons, Sip-N-Puff systems, etc. The purpose of the SCR is to enhance and expand input device function, so that the user can do more with his/her power chair.

This manual is designed to explain basic operation for the following functions:

1. SCR Controls
  - Utilizes the On/Off Switch and the Mode Switch to power the SCR and choose pre-programmed functions.
2. Standard Mode Configuration
  - Allows the user to choose and control the driving speed of his/her power chair using one of five modes.
3. Timeout Function
  - This is a safety feature built in to the programming of the SCR.
4. Seat Control
  - Allows the user to control seat actuator adjustment.

Figure 1 provides information on the SCR components and connections. Use this diagram to familiarize yourself with the function and location of each component before using the SCR.

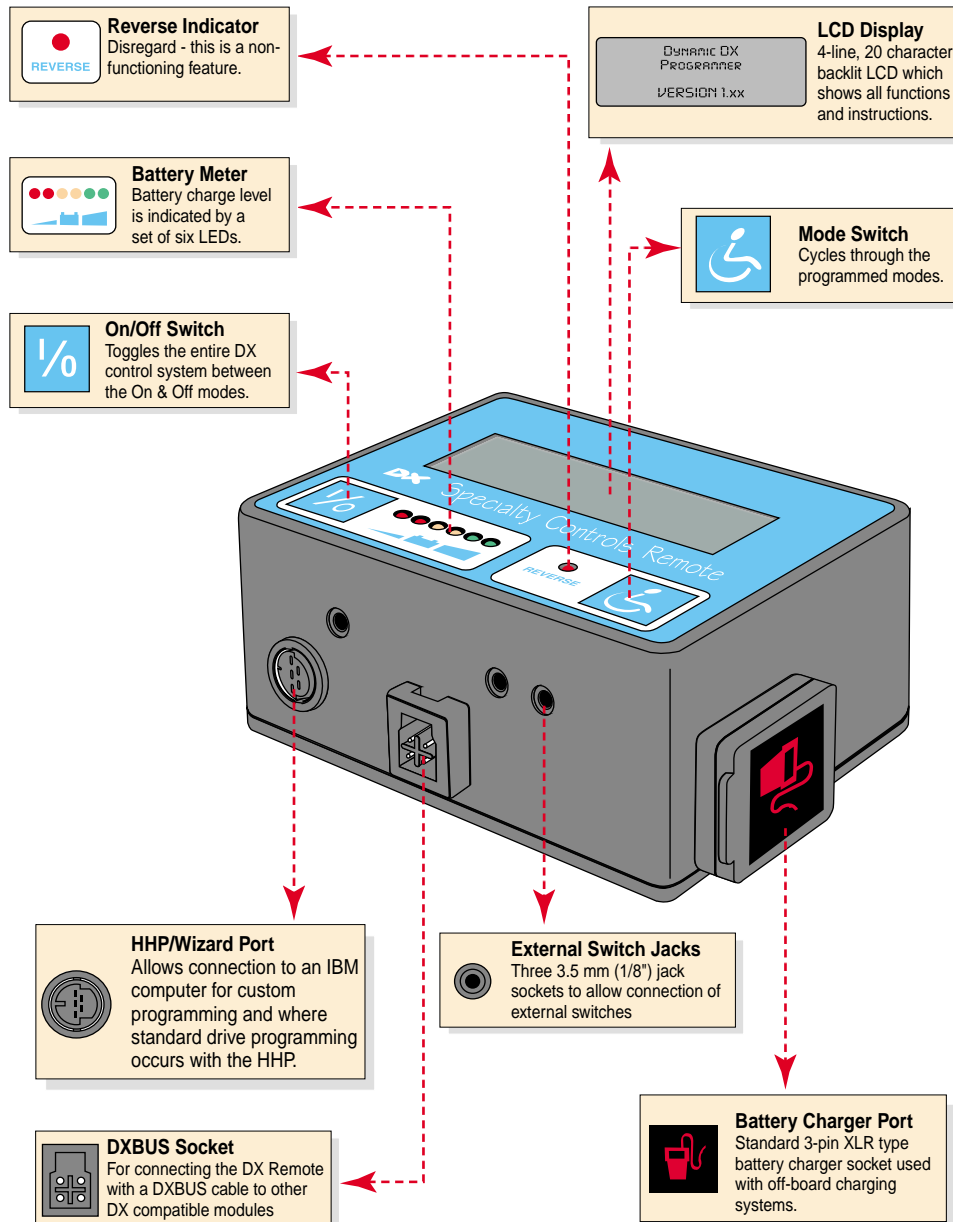


Figure 1. SCR Components and Connections

## SCR CONTROLS

The SCR has only two built-in controls: the On/Off Switch and the Mode Switch (see figure 1). The On/Off Switch simply controls power to the SCR. The Mode Switch cycles the SCR through eight possible program modes. Only five of the eight possible program modes are used in the Standard Mode Configuration. All five program modes are Drive Modes (see *Standard Mode Configuration*).

## STANDARD MODE CONFIGURATION

Quantum Rehab's Standard Mode Configuration for the SCR encompasses five drive programs, all of which control driving speed as a percentage of maximum speed. The slowest is Drive Mode 1; the fastest is Drive Mode 5. Actual maximum speed varies according to the power chair model.

## Driving in Standard Mode Configuration

Driving in Standard Mode Configuration is simple. Power up the SCR using the On/Off Switch (either onboard or plugged into the external On/Off Switch jack). The LCD Display will show Drive Mode 1 and prompt the user to select one of three options (see figure 2):

1. Previous (down arrow)  
-Returns the SCR to the previous state (in this case, powered down)
2. Yes (right arrow)  
-Selects Drive Program 1
3. Next (up arrow)  
-Selects the next option (in this case, Drive Program 2)

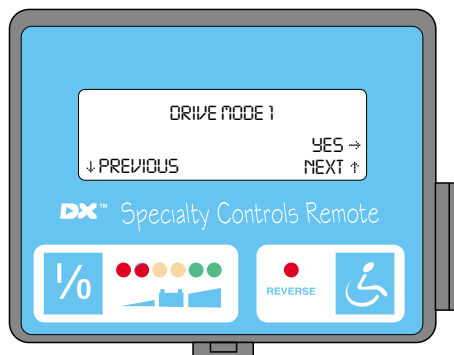


Figure 2. Drive Program Selection

Using the input device, select the drive program most appropriate to the current environment, e.g., indoor setting versus outdoor setting. Choosing the “Next” command will cycle the SCR through the drive programs. The LCD display will change with each option selection.

## TIMEOUT FUNCTION

The timeout function is a safety feature in the nature of an “automatic sleep” mode. When the SCR is powered up, the user has ten seconds to begin driving the power chair. If the user begins driving the power chair within ten seconds of power up, the timeout function is suspended until the unit is stationary again. If the user does not begin driving the power chair within ten seconds of power up, the timeout function automatically exits to the Main Screen Display.

## SEAT CONTROL

Executing a “Next” command with the input device when in Drive Mode 5 moves the SCR to the Seat Control Menu. See figure 3. To enter the Seat Control Mode, choose the “Yes” option. In this mode, the user can control the adjustment of the available seat actuators, including Tilt, Recline, Left Leg Rest, and Right Leg Rest. Each mode will prompt the user to choose one of four options (see figures 4-7):

### Tilt Mode

1. Down (up arrow)
  - Returns the seat to an upright position.
2. Up (down arrow)
  - Adjusts the actuator to the desired tilted position.
3. Exit (left arrow)
  - Returns the SCR to the Seat Control Menu
4. Next (right arrow)
  - Moves the SCR to the next actuator option.

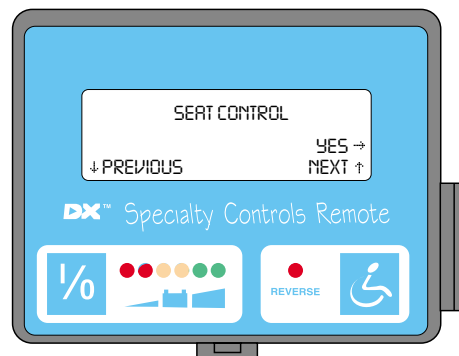


Figure 3. Seat Control Selection

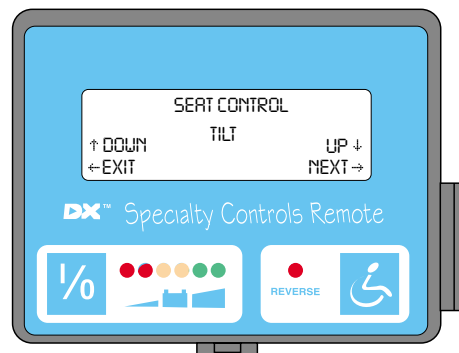


Figure 4. Tilt Mode Selection

### Recline Mode

1. Up (up arrow)  
-Returns the seat to an upright position.
2. Recline (down arrow)  
-Adjusts the seat to the desired position.
3. Previous (left arrow)  
-Returns the SCR to the previous actuator option.
4. Next (right arrow)  
-Moves the SCR to the next actuator option.

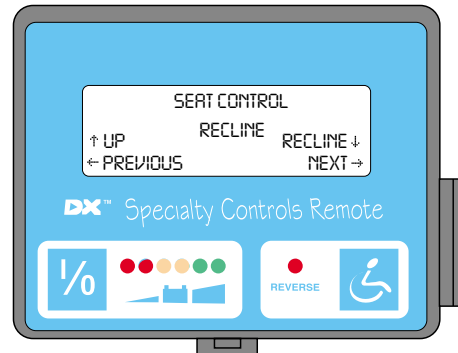


Figure 5. Recline Mode Selection

### Left Leg Rest Mode

1. Down (up arrow)  
-Lowers the leg rest.
2. Up (down arrow)  
-Raises the leg rest.
3. Previous (left arrow)  
-Returns the SCR to the previous actuator option.
4. Next (right arrow)  
-Moves the SCR to the next actuator option.

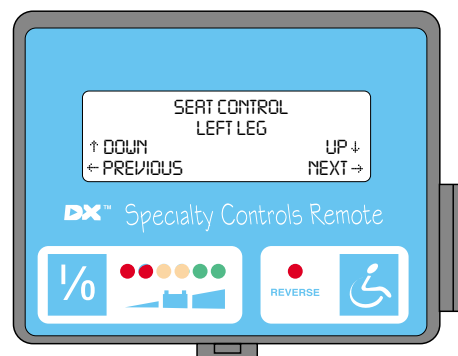
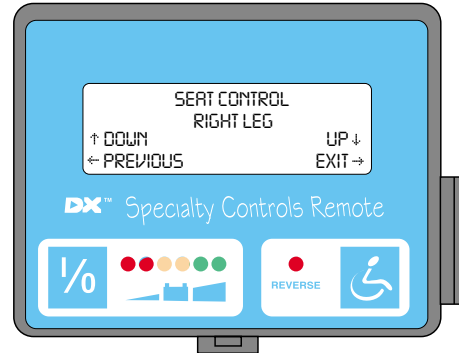


Figure 6. Left Leg Rest Mode Selection



### Right Leg Rest Mode

1. Down (up arrow)  
-Lowers the leg rest.
2. Up (down arrow)  
-Raises the leg rest.
3. Previous (left arrow)  
-Returns the SCR to the previous actuator option.
4. Exit (right arrow)  
-Moves the SCR to the next available menu.



**Figure 7. Right Leg Rest Mode Selection**

<b>NOTES</b>
--------------

<b>NOTES</b>
--------------



***Exeter, PA***

***Quantum Hotline: 1-866-800-2002***

***Visit the Rehab Zone at:  
[www.quantumrehab.com](http://www.quantumrehab.com)***



INFMANU1746/A/MAY 2001

## Free Manuals Download Website

<http://myh66.com>

<http://usermanuals.us>

<http://www.somanuals.com>

<http://www.4manuals.cc>

<http://www.manual-lib.com>

<http://www.404manual.com>

<http://www.luxmanual.com>

<http://aubethermostatmanual.com>

Golf course search by state

<http://golfingnear.com>

Email search by domain

<http://emailbydomain.com>

Auto manuals search

<http://auto.somanuals.com>

TV manuals search

<http://tv.somanuals.com>