

# Pyramid TimeTrax<sup>ez</sup>

## LARGE BUSINESS TECHNOLOGY ON A SMALL BUSINESS BUDGET

Automated time and attendance solutions are no longer only for large companies. Pyramid's TimeTrax EZ is the first ever time and attendance system that is simple to use and will provide years of flexibility and reliability. TimeTrax EZ provides a solution that is both highly capable and works in almost every industry. The system accommodates 25 employees and is upgradeable to 100. TimeTrax EZ is the ideal, affordable, software-based solution to capture time accurately, streamline your business processes, and reduce your expenses with the swipe of a card.

- Affordable automated time and attendance manager
- Large easy-to-read LCD display
- Exporting to ADP, PAYCHEX, QuickBooks, and more



**Pyramid**  
Time Keeping Made Simple

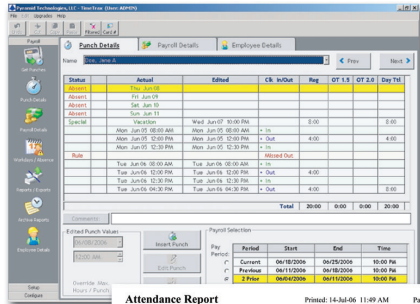


# Pyramid TimeTrax<sup>ez</sup>

## Pyramid TimeTrax EZ at a Glance

- Plug-and-play simplicity
- Full "point & click" punch and payroll editing, plus many standard reports
- 25-employee capacity out of the box, upgradeable to 100
- Exporting compatibility with major payroll systems including: ADP, PAYCHEX, QuickBooks, and more
- Calculates overtime automatically, including: time-and-a-half, double-time, special Saturday, Sunday, or 7th day overtime work rules, weekly/bi-weekly/semi-monthly/monthly payroll
- Special Pay Categories for sick time and vacation time
- Holiday or bonus pay automatically paid globally or to select employee groups
- Easy-to-read, large LCD displays time, date, and employee name
- Battery backup and memory should power failure occur
- Made in the USA

**EMPLOYEE PUNCH SCREEN**



**ATTENDANCE REPORT**

Attendance Report  
Printed: 14-Jul-06 11:49 AM Page 1 of 1  
For The Period 09-Jul-06 through 16-Jul-06

Employee Name	Date	Status	Time
Dec, Jane A	07/16/2006	Absent	
Dec, Jane A	07/17/2006	Absent	
Dec, Jane A	07/18/2006	Absent	
Dec, Jane A	07/19/2006	Absent	
Dec, Jane A	07/14/2006	Absent	
Smith, John Q	07/16/2006	Absent	
Smith, John Q	07/17/2006	Absent	
Smith, John Q	07/18/2006	Absent	
Smith, John Q	07/19/2006	Absent	

TIME CARD REPORT  
Employee Name: CAREY, CAROL L Page 1 of 1  
Payroll Group: HOURLY EMPLOYEES / Employee Group: HOURLY EMPLOYEES - Default Emp Grp  
For The Pay Period: 04/02/2005 12:00 AM Thru 04/10/2005 12:00 AM

Status	Actual	Edited	Date	In/Out	Rate	GL	OT	Total			
Add'd	Mon Apr 04 07:46 AM	Mon Apr 04 07:48 AM	In								
Add'd	Mon Apr 04 08:24 AM		Out		1.600						
Add'd	Mon Apr 04 12:00 PM		Out		2.600						
Add'd	Mon Apr 04 12:30 PM		In								
Add'd	Mon Apr 04 03:03 PM		Out		3.550						
Add'd	Mon Apr 04 05:09 PM		Out		2.100			8.850			
<b>Total</b>								8.85	0.00	0.00	8.85

**TIME CARD REPORT**

### Kit Includes:

EZ terminal, swipe cards, TimeTrax software, power supply, cables, mounting bracket, and instruction manual

### Warranty:

1-year manufacturer's limited warranty with free product replacement and 90-days of free software support. Extended service/support and warranties are available through Pyramid.

### Specifications:

Weight: 1 lb.          Dimensions: 5.7"H x 5"W x 2"D  
Voltage: Standard 115v, 60Hz  
UL and cUL LISTED

### System Requirements:

Windows® 2000 SP4, XP, Windows NT®, Windows® Vista™

For more time keeping solutions for your business, visit Pyramid online at: [www.ptitime.com](http://www.ptitime.com)



### Accessories:

- |                                  |               |
|----------------------------------|---------------|
| Swipe Card Rack                  | Model # 500-4 |
| Replacement Swipe Cards (1-25)   | Model # 41302 |
| Replacement Swipe Cards (26-50)  | Model # 41303 |
| Replacement Swipe Cards (51-100) | Model # 41304 |



Pyramid Technologies, LLC  
45 Gracey Avenue, Meriden, CT 06451  
Toll Free: 888.479.7264 • Fax: 203.237.9497



## Free Manuals Download Website

<http://myh66.com>

<http://usermanuals.us>

<http://www.somanuals.com>

<http://www.4manuals.cc>

<http://www.manual-lib.com>

<http://www.404manual.com>

<http://www.luxmanual.com>

<http://aubethermostatmanual.com>

Golf course search by state

<http://golfingnear.com>

Email search by domain

<http://emailbydomain.com>

Auto manuals search

<http://auto.somanuals.com>

TV manuals search

<http://tv.somanuals.com>