



# QSDF8204

## DVR User Manual



**Contact US:**

**Q-see Products**

**8015 E. Crystal Dr  
Anaheim, CA 92807**

**Website:**

**<http://www.q-see.com>**

**Customer Service:**

**Phone: 877-998-3440 x 538**

**Email: [cs@dpsi-usa.com](mailto:cs@dpsi-usa.com)**

**Tech Support:**

**Phone: 877-998-3440 x 539**

**Email: [ts@dpsi-usa.com](mailto:ts@dpsi-usa.com)**

**Fax:**

**714-998-3509**

For H.264-4-channel Digital Video Recorder  
All rights reserved

Rev 102208B

# CONTENTS

<b>CHAPTER 1 Introduction .....</b>	<b>4</b>
1.1 DVR Introduction.....	4
1.2 Main Features and Functions.....	4
<b>CHAPTER 2 Panel Functions .....</b>	<b>6</b>
2.1 Check Accessories.....	6
2.2 Front Panel & Interface Terminals.....	6
2.3 Rear Panel.....	8
2.4 Remote Control Introduction .....	9
2.4.1 Use Remote Control.....	9
2.4.2 Remote Control.....	9
<b>CHAPTER 3 Basic Operation Guide.....</b>	<b>11</b>
3.1 How to Start DVR.....	11
3.2 Main Menu Setting .....	12
3.2.1 Basic Configuration .....	13
3.2.2 Live Configuration .....	14
3.2.3 Record Configuration .....	15
3.2.4 Alarm Configuration.....	17
3.2.5 PTZ Configuration .....	21
3.2.6 User Configuration .....	22
3.2.7 Network Configuration.....	24
3.2.8 Manager Tools.....	26
3.3 Shortcut Menu.....	29
3.3.1 PTZ.....	29
3.3.2 Search .....	30
3.3.3 Information.....	34
3.3.4 Other.....	34
<b>CHAPTER 4 Remote Surveillance.....</b>	<b>35</b>
4.1 Accessing DVR .....	35
4.1.1 Accessing DVR Over a Network .....	35
4.1.2 Accessing DVR Over the Internet .....	36
4.2 Main Interface .....	37
4.2.1 Login.....	37
4.2.2 Snap Picture .....	37
4.2.3 Parameter Settings.....	37
4.2.4 Record .....	38
4.2.5 Camera Audio .....	38
4.2.6 DVR Status Panel.....	38
4.3 Remote Playback and Search.....	38
4.3.1 Remote Playback .....	38
4.3.2 Other Functions.....	40
4.4 Remote DVR Configuration.....	42
4.4.1 Basic Configuration .....	42
4.4.2 Live Configuration .....	43
4.4.3 Record Configuration .....	44
4.4.4 Alarm Configuration.....	45
4.4.5 Network Configuration.....	45
4.4.6 User Configuration .....	45
4.4.7 Manage Tools.....	45
4.5 Remote PTZ.....	46

<b>CHAPTER 5</b>	<b>Operation with Mouse</b> .....	<b>48</b>
5.1	Switch Channel.....	48
5.2	Enter Menu List.....	48
5.2.1	Search.....	48
5.2.2	Configuration.....	48
5.2.3	PTZ Control.....	48
5.2.4	Stop Record/Start Record.....	49
5.3	Fast Reverse and Fast Forward.....	49
<b>CHAPTER 6</b>	<b>Mobile Surveillance</b> .....	<b>50</b>
6.1	By Smart Phone with WinCE Operating System.....	50
6.2	By Smart Phone with Symbian Operating System.....	52
<b>CHAPTER 7</b>	<b>Frequently Asked Questions</b> .....	<b>55</b>
<b>Appendix A</b>	<b>Standard &amp; Specifications</b> .....	<b>58</b>
<b>Appendix B</b>	<b>Record Capacity</b> .....	<b>59</b>
<b>Appendix C</b>	<b>Abbreviation</b> .....	<b>59</b>
<b>Q-See</b>	<b>Product Warranty</b> .....	<b>60</b>



# CHAPTER 1 Introduction

## 1.1 DVR Introduction

This DVR uses Dual Stream technology, and standard H.264 algorithm, combined with a fashionable outline design and the latest advanced video compression format, with a main processor that can process recorded video and internet transmission simultaneously at different bit rates and has a distinct independent LCD monitor embedded on the front panel. This DVR has powerful internet functions including complete remote control, good internet speed, and high-quality picture recording with very low bit rate that saves HDD space to ensure the ability to record for long periods.

## 1.2 Main Features and Functions

### LIVE SURVEILLANCE

- Supports channel security by hiding live display
- Displays the local record status and basic information
- Two level password control: administrator and common user
- Supports USB mouse and remote control operation
- 7-inch TFT LCD pop-up screen monitor

### COMPRESSION FORMAT

- Standard H.264

### RECORD MEDIA

- Supports one SATA HDD to record

### BACKUP

- Supports backup via USB to USB flash memory
- Supports backup remotely by network client
- Two backup formats: DVR and AVI

### RECORD & PLAYBACK

- Recording modes: Manual operation, Sensor detection, Schedule Record and Motion detection
- Supports HDD recycling
- Supports single channel playback
- Supports four-channel playback on DVR
- Supports deleting and locking recorded files
- Supports remote playback in Network Client through LAN or Internet
- Two record search modes: time search and event search

### ALARM

- Four alarm inputs and one alarm output

## **PTZ CONTROL**

- Supports various PTZ protocols
- Supports 16 PTZ presets
- Supports remote PTZ control

## **COMMUNICATION PORT FOR PTZ CAMERAS**

- RS 485 communication port

## **NETWORK**

- Supports TCP/IP protocol
- Supports remote DVR configuration
- Supports static IP, dynamic IP (DHCP) and PPPoE
- Supports DDNS: Pending
- Real-time live surveillance, remote playback and remote backup
- Remote PTZ control and Preset setting
- Supports IE browser
- Supports Central Management software (short for CMS below) to manage multiple devices over the Internet
- Supports mobile viewing by phones and PDAs with WinCE or Symbian operating systems on 3G networks

# CHAPTER 2 Panel Functions

*Warning: Please power off the DVR before you connect other devices to it.*

## 2.1 Check Accessories

When you receive the unit, please check the accessories and make sure you have all of the parts.

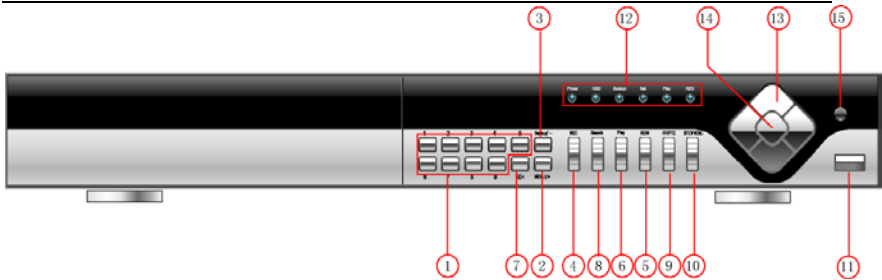
Normally, accessories will include one mouse, a power cable, manual, and some screws for installing HDD. If you purchased a complete monitoring package, it will also include cameras, hard drive, Ethernet cable, and cables, stands, and power adapters for the cameras.

## 2.2 Front Panel & Interface Terminals

The front panel layouts with the flip screen open and closed are shown below. The functions of all buttons on the front panel are explained in the following tables. The product you have may be slightly difference since we sometimes upgrade or improve our products.



Item	Name	Function
1	OPEN button	Pop-up or close the TFT LCD monitor screen
2	MENU	For adjusting the TFT monitor screen
3	VOL +/-	Audio volume control
4	CH +/-	Change channels on TFT LCD monitor screen
5	CLOCK	Display time on TFT LCD monitor screen
6	HOUR/SET/MIN	Enter SETUP mode to correct the time display

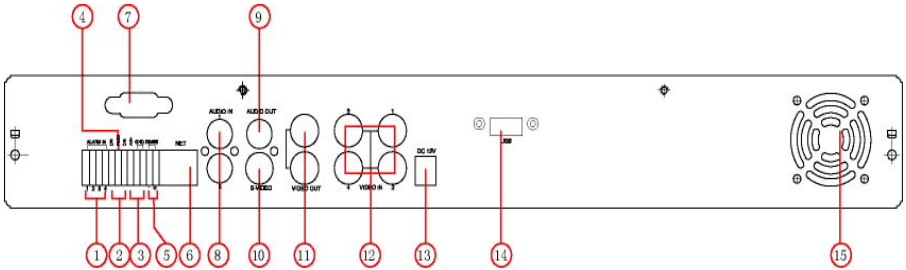


**Fig2.1 Front Panel**

Item	Name	Function
1	Digital buttons	Input numbers or choose cameras
2	+ /Menu button	1. Increase the value in setup 2. Enter menu in live mode
3	- /Backup	1. Decrease the value in setup 2. Enter backup mode in live mode
4	RECORD	Record manually
5	REW	Rewind
6	PLAY	Enter playback interface
7	10+	Choose channel 10 and above 0-9, and double-click is 10.
8	SEARCH	Enter search mode
9	FF/PTZ	1. Fast forward 2. Enter PTZ mode in live
10	STOP/ESC	1. Quit playback mode 2. Exit the current interface or status
11	USB port	To connect USB mouse for control or external USB devices like USB flash drive or USB HDD for backup or firmware update
12	Indicator lights	Working status lights for power, HDD, network, etc
13	Direction/Multi-screen button	1. Direction buttons. Move cursor in setup or control PTZ cameras 2. Change screen display between single & 4 screen
14	Enter button	To confirm the choice or setup
15	IR Receiver	For remote control

## 2.3 Rear Panel

Layout subject to change, may be slightly different from your model.  
 The rear panel sketch and interface buttons are shown below:



Items	Names	Functions
1	ALARM IN	Connect to external sensor 1-4.
2	ALARM OUT	Relay output. Connect to external alarm.
3	+5 V and GND	+5 Volt and ground connection
4	COM port	For debugging or data entry
5	RS485	Connection for PTZ cameras
6	RJ45 PORT	Connection for network or internet
7	Not Used	
8	AUDIO IN	Audio input, connection for MIC or other audio capture devices
9	AUDIO OUT	Audio output, connection for speaker
10	S-VIDEO	S-Video output, connect to monitor
11	VIDEO OUT	Connect to TV or monitor
12	VIDEO IN	4ch Video inputs
13	POWER INPUT	DC 12V
14	USB PORT	To connect USB mouse for control or external USB devices like USB flash drive and USB HDD for backup or firmware update
15	FAN	For cooling the device



## 2.4 Remote Control Introduction

### 2.4.1 Using Remote Control

 **Notice:** Please note that Remote Control is not a standard part of this DVR. Your package might not include it.

To setup Remote Control:

1. Open the battery cover of Remote Control.
2. Put in two AAA batteries with poles aligned correctly.
3. Replace the battery cover.

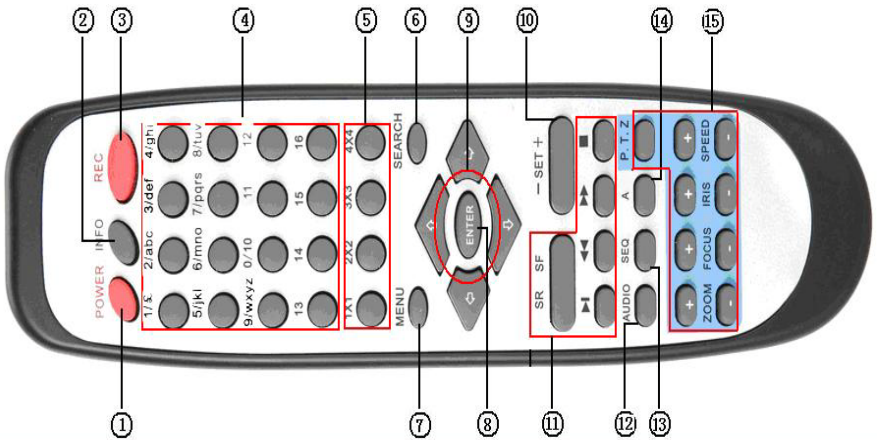
If the Remote Control does not work, please check the following:

- Are the batteries positioned correctly?
- Do the batteries still have power?
- Is something blocking the Infrared signal between the Remote Control and the DVR?
- Are signals transmitted by other devices interfering with the Remote Control?

 **Notice:** If none of the above problems apply, please contact Q-See to replace the remote control.

### 2.4.2 Remote Control

The layout of the remote control is shown below.



The functions of the buttons on the Remote Control are described in the table below:

Items	Names	Functions
1	Power Button	Start shutdown to stop firmware running. Do it before powering off.
2	INFO Button	Get information about the DVR like firmware version, HDD information
3	REC Button	To record manually
4	Number and Letter Buttons	Input numbers and letters or choose camera
5	Multi-Screen Button	To choose multi-screen display mode
6	SEARCH Button	To enter file search mode
7	MENU Button	To enter menu
8	ENTER Button	To confirm the choice or setup
9	Direction Button	Move cursor in setup or move PTZ cameras
10	+/- Button	To increase or decrease the value in setup
11	Playback Control Button	To control playback, Fast forward/rewind/stop/single frame play
12	AUDIO Button	To enable audio output in live mode
13	Auto Dwell Button	To enter auto dwell mode
14	A Button	Press the button to change input mode. Including switches among capital letter, small letters, numbers and special symbols
15	PTZ Control Button	To control PTZ camera Move camera/ZOOM/FOCUS/IRIS/SPEED control

# CHAPTER 3 Basic Operation Guide

## 3.1 How to Start DVR

 **Notice:** Before powering on the unit, please make sure the power input matches the local power voltage.

To start the DVR:

**STEP1** Connect the DVR to AC adaptor and plug in.

**STEP2** Turn on the DVR.

**STEP3** Wait for the DVR to initialize.

After DVR is powered on, 'STARTING.....' appears on the screen, which indicates the DVR is initializing.

After 'WELCOME' is displayed, you enter into live display mode. You can press the "Menu" button to enter Main Menu.

The symbols displayed on the screen are explained in the following table:

Symbol	Meaning	Symbol	Meaning
LIVE	Live picture mode	REC	Manual recording
A	Sensor recording	M	Motion recording
DISK	Percentage of hard drive used	V-LOSS	Video loss

### 3.1.1 Basic operation of TFT LCD Monitor Screen

The basic operation of TFT LCD monitor screen is shown below:

Press OPEN button, the TFT LCD Monitor Screen will pop-up, press OPEN again it will close.



**OPEN**



TFT LCD Monitor Screen Open.

## 3.2 Main Menu Setting

There is an administrator setup in the DVR. The administrator has control over all settings. The username is "Admin", and default password is "123456". Steps of entering the Main Menu are:

**Notice:** *The instructions in the examples are the steps using the Remote Control. If using a mouse the operation may be easier, you would follow the instructions in dialogue boxes and navigate through menu items. If using the front panel buttons you cannot control PTZ cameras, but the other operations are the same as the remote control.*

**STEP1** Press the "Menu" button, input username and password in the Login interface (as Fig. 3.1), and then you will see the Main Menu (as Fig. 3.2).



Fig 3.1 Login

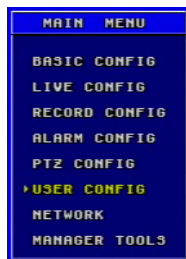


Fig 3.2 Main

**STEP2** Move the cursor, and the selected items will be highlighted in yellow

**STEP3** Press "Enter" key to enter the sub-menu, and press "Menu" key to get back to Main Menu

The structure of the main menu is shown in Fig 3.3.

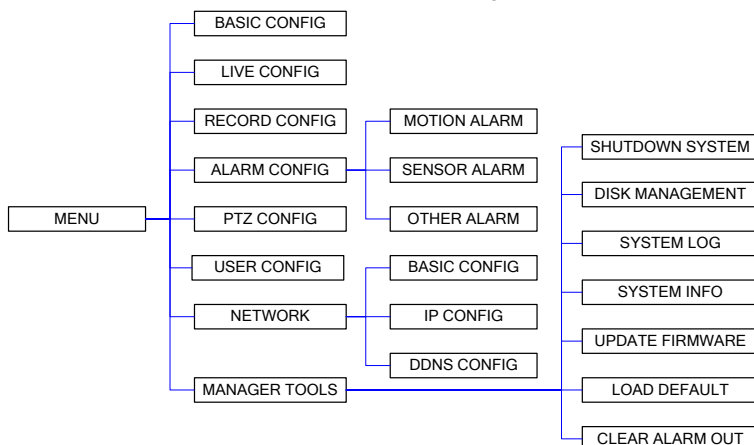


Fig 3.3 Structure of Main Menu

### 3.2.1 Basic Configuration

Basic Configuration menu is shown as Fig. 3.4.



Fig 3.4 Basic Configuration



Fig 3.5 Time adjustment

#### 1. VIDEO FORMAT

There are two video formats: NTSC and PAL. Please select according to your area, NTSC is used in the USA.

#### 2. TIME POSITION

This item is for setting up the position of the time on the display. There are three options:

- TOP: Time is displayed on top of the screen.
- BOTTOM: Time is displayed at the bottom of the screen.
- NO: Time is not displayed on the screen

#### 3. Language

There are languages to be selected English or Spanish.

#### 4. DVR NAME

Users can set DVR name with letters from 'a' to 'z' or numbers from '0' to '9'.

**STEP1** Press "A" button to switch the inputting mode from letters to numbers

**STEP2** Modify the DVR name.

**STEP3** Press "Enter" key to confirm the operation.

### 5. DVR ID

DVR ID consists of three numbers.

**STEP1** Move the cursor to the item.

**STEP2** Press "**Enter**" key to modify numbers.

**STEP3** Enter three numbers, and then press "**Enter**" key to confirm the modified entry.

**STEP4** Press "**OK**" button to confirm the operation.

### 6. DATE FORMAT

There are three date formats:

- Asian Date format: YY/MM/DD
- European Date format: DD/MM/YY
- American Date format: MM/DD/YY

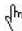
### 7. TIME ADJUSTMENT

Time Adjustment menu is shown as Fig. 3.5. Please stop recording before adjusting time.

**STEP1** Move the cursor to the item.

**STEP2** Modify numbers by using "+" and "-" buttons.

**STEP3** Press "**Enter**" key to confirm the operation.

 **Notice:** If you set a time that is before the current displayed time, the record between the adjusted time and current time will be deleted automatically.

### 8. BUZZER ALARM

There are seven options to choose: always (continuous buzzer), 5 seconds, 10 seconds, 30 seconds, 1 minute, 2 minutes and 4 minutes.

## 3.2.2 Live Configuration

Live Configuration menu is shown in Fig. 3.6.



Fig 3.6 Live Configuration

#### 1. CHANNEL

**STEP1** Move the cursor to the item.

**STEP2** Press "**Enter**" key to select the channel

#### 2. CHANNEL NAME

User can set the channel name with letters from 'a' to 'z' or numbers from '0' to '9'.

**STEP1** Press "**A**" button to switch the inputting mode between letters and numbers.

**STEP2** Enter channel name.

**STEP3** Press "**Enter**" key to confirm the operation.

3. SHOW NAME

If selecting "**SHOW NAME**", the camera name will be displayed in live view. If unselecting "**SHOW NAME**", the camera name will not be displayed.

4. CHANNEL HIDE

If selecting "**HIDE**", the video from the channel will not display in live view, but it will still be recorded. If unselecting "**HIDE**", the video will be displayed.

5. CHANNEL COLOR

Change the values of contrast, brightness, saturation, and hue of the picture.

6. COPY CONFIG TO

Copy the configuration of one channel to any other selected channels. By selecting "ALL", users can copy the configuration to all other channels.

**STEP1** Select the channel you want to copy this channel to, or select ALL to copy the configuration to all other channels.

**STEP2** Press "**COPY**" button.

**STEP3** Press "**Enter**" key to confirm the operation.

### 3.2.3 Record Configuration

Record Configuration menu is shown in Fig. 3.7.



Fig 3.7 Record Configuration

1. VIDEO RESOLUTION

This unit supports CIF format.

Resolutions of different video formats are: PAL: 352\*288(CIF);  
NTSC: 352\*240(CIF)

2. RECYCLE

Checking the "**RECYCLE**" option means once the hard drive is filled the DVR will continue to record by covering the previous recording automatically, starting with the oldest. If you do not check "**RECYCLE**", recording will stop once the hard drive is full.

### 3. PRERECORD TIME

Prerecord time refers to the amount of time recorded from memory before the alarm was triggered. There are two options: 5 seconds and 10 seconds.

### 4. TIME STAMP

If selected, record time will be displayed on the bottom of the screen at playback

### 5. CHANNEL

**STEP1** Move the cursor to the item.

**STEP2** Press "**Enter**" key to switch the channel and select.

### 6. VIDEO QUALITY

There are five options: lowest, lower, medium, higher and highest. The higher the picture quality, the clearer the image is, but more hard drive space will be taken up.

### 7. AUDIO

If you check "**AUDIO**", DVR will record audio with video recording. Otherwise, it will not record audio.

 **Notice:** • The default setting is that Audio input1 matches channel1 and Audio input2 matches channel2.

• When playing back the record, please press "AUDIO" button to switch the sound to the corresponding channel.

### 8. SCHEDULE RECORD

Schedule Record Setup is shown as Fig. 3.8.

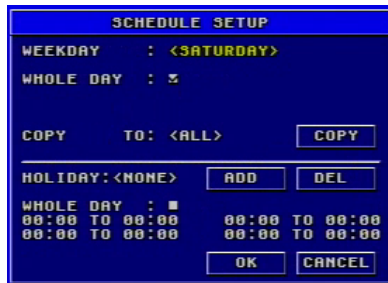


Fig 3.8 Schedule Setup

**STEP1** Move the cursor to "**SCHEDULE RECORD**" option

**STEP2** Check "**SCHEDULE RECORD**", and the "Setup" window will pop up.

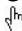
**STEP3** Press "**Setup**" to enter the Schedule Setup menu.

Press "**ESC**" button on the front panel to get back to upper menu.

**STEP4** In the Schedule Setup menu, move the cursor to select a day, and check "whole day" if you want to record all of the time.

**STEP5** If you only want to record certain time periods press "**Enter**" key to set up time.

**STEP6** Press "+" and "-" buttons on the front panel to modify the time.

 **Notice:** When you use the mouse, you need roll the middle wheel to modify the time.



**STEP7** Press "Enter" key to confirm the setup.

On weekday and holiday, you can select whole day or set four periods in a day to record.

9. FRAME RATE SETUP

Frame rate is the number of pictures recorded each second. If choosing 15, the picture-recording rate is 15 frames per second.

User can set frame rates based on the record mode.

If the video format is NTSC, there will be five frame rates to choose: 1, 3, 7, 15 and 30. The maximum frame rate is 30.

If the video format is PAL, there will be five frame rates to choose: 1, 3, 6, 12 and 25. The maximum frame rate is 25.

10. COPY TO

This option allows you to copy the settings of this channel to other selected channels.

### 3.2.4 Alarm Configuration

Alarm Setup menu is shown as Fig. 3.9.



Fig 3.9 Alarm Configuration

### MOTION ALARM

If you select Motion Alarm in Alarm Configuration, the submenu shown as Fig. 3.10 will be displayed.



Fig 3.10 Motion Alarm Configuration

### 1. HOLD TIME

This sets the continued recording time after an alarm is triggered. There are two options: 1 minute and 2 minutes. It also determines the interval between motion detection events. If the HOLD TIME is 1 minute, if new motion is detected within this period it will be considered part of the previous event instead of the start of a new event.

### 2. CHANNEL

**STEP1** Move the cursor to the channel.

**STEP2** Press "**Enter**" key to switch the channel and select.

### 3. DETECTION

Checking "**DETECTION**" means to enable motion detection, not checking means motion detection will not be enabled.

### 4. SENSITIVITY

This is the sensitivity level of the motion sensors.

The range is from '1' to '8'. The higher the value, the more sensitive.

### 5. TO REC

If selecting "**TO REC**", DVR will record when motion is detected. If not, DVR will not record when motion is detected.

### 6. ALARM OUT

There are two options: ALARMOUT1 and BUZZER.

- When ALARMOUT1 is selected and an alarm is triggered, the DVR will give send signal to the alarm out port.
- When BUZZER is selected and the sensor is triggered, DVR will give a buzzer alarm.

When the alarm output is unselected, DVR will not send an alarm.

### 7. SCHEDULE

This is the schedule for the motion detection. The default schedule is everyday. Press "**SETUP**" button to set the motion detection schedule.

### 8. AREA

**STEP1** Move the cursor to "setup".

**STEP2** Press "**SETUP**" button to enter the Area Setup submenu.

It displays the selected detection area (refer to Fig. 3.11). There are four options:

- ALL: motion anywhere in the area will be detected as shown in the picture.
- CUSTOM: You can select part of the area to be detected.
- NULL: No area will not be open to motion detection
- BACK: Go back to Motion Alarm Configuration menu.

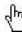


Fig 3.11 Detection Area Setup

Sub-steps for manually selecting the detection area are described below:

1. In the Area Setup submenu, choose "**CUSTOM**" option.
2. Press "**Enter**" key to confirm the operation.
3. Press "Up", "Down", "Left" and "Right" buttons to choose the area which needs to be detected
4. Press "**Enter**" key to select or cancel the area.
5. Press "**Esc**" button to confirm the option and exit "**CUSTOM**" option.

**STEP3** Press "**BACK**" option to go back the Motion Alarm Configuration menu.

 **Notice:** *If continuous recording mode, manual record and alarm record are activated at the same time. The alarm events can be found in Search by Event', please refer to the '3.3.2 Search' function in '3 Search by Event'.*

9. COPY TO

Use this option to copy the settings of this channel to any other selected channel.

**SENSOR ALARM**

Sensor alarm submenu is shown as Fig. 3.12. Every Sensor matches one or more channels.



Fig 3.12 Sensor Alarm Configuration

### 1. HOLD TIME

This sets the continued recording time after an alarm is triggered. There are two options: 1 minute and 2 minutes. It also determines the interval between motion detection events. If the HOLD TIME is 1 minute, if new motion is detected within this period it will be considered part of the previous event instead of the start of a new event.

### 2. SENSOR

**STEP1** Move the cursor to the "**SENSOR**" option.

**STEP2** Press "**Enter**" key to switch the Sensor.

### 3. DETECTION

This is the switch of the sensor alarm. If you check "**DETECTION**", DVR will begin detecting. If you do not check it, the detection function is disabled.

### 4. TYPE

Press "**Enter**" key to enter the sub-menu. There are two options: NO and NC.

'NO' means normal open. If 'NO' is chosen, the DVR will be triggered when the alarm when the voltage drops.

'NC' means normal close. If 'NC' is chosen, the DVR will be triggered when the alarm sends a high voltage charge.

### 5. TRIGGER RECORD

One channel can connect with one sensor. However, one sensor can trigger one or more channels.

**STEP1** Move the cursor to "**TRIGGER RECORD**" option.

**STEP2** Select the channel you want that sensor to trigger.

**STEP3** Press "**Enter**" key to confirm the operation.

For example, if you select the sensor named SENSOR1 and the trigger records named CAM1 and CAM2, it will record on channel 1 and channel 2 when the SENSOR1 is triggered.

### 6. ALARM OUT

There are two options: ALARMOUT1 and BUZZER.

- When ALARMOUT1 is selected and the sensor is triggered, DVR will give send a signal to the alarm out port.
- When BUZZER is selected and the sensor is triggered, DVR will give buzzer alarm.
- When the alarm output is unselected, DVR will not send alarm.

### 7. SCHEDULE

This is the schedule of when the sensor detection is active. The default schedule is everyday.

### 8. COPY TO

Users can copy the setting of this channel to all or any other selected channel.

## OTHER ALARM

Other Alarm submenu is shown in Fig. 3.13. Other alarm includes video loss, disk full and so on.

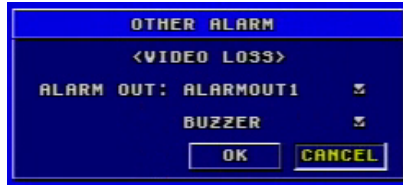


Fig 3.13 Other Alarm Configuration

There are two options of alarm output: ALARMOUT1 and BUZZER. Their functions are same with that in sensor alarm.

### 3.2.5 PTZ Configuration

PTZ Configuration menu is shown in Fig. 3.14.

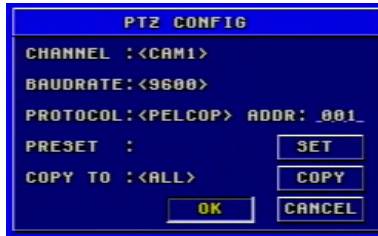


Fig 3.14 PTZ Configuration

#### 1. CHANNEL

Set the channel connecting to the Speed Dome.

#### 2. BAUDRATE

There are five options for baud rate: 1200, 2400, 4800, 9600, and 19200.

#### 3. PROTOCOL

Choose PTZ protocol. Currently the DVR supports PELCO\_D, PELCO\_P, MINKING, NEON, STAR, VIDO, DSCP, VISCA and LILIN.

#### 4. ADDR

Set PTZ address. Press "**Enter**" key and use the number key, "+" and "-" buttons to set.

#### 5. PRESET

**STEP1** Press "**SET**" button to enter Preset submenu shown in Fig. 3.15. There are 16 preset points that can be set in every channel.



Fig 3.15 Preset

**STEP2** In Preset submenu, press "**Enter**" button to switch the preset point needing to be reset.

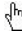
**STEP3** Press "**ADJUST**" button to enter PTZ mode.

**STEP4** On the front panel, press "**ZOOM**", "**FOCUS**", "**SPEED**", "**IRIS**", "**+**" (MENU) and "**-**" (PTZ) buttons to modify the position of the preset point.

**STEP5** Press "**UP**", "**DOWN**", "**RIGHT**" and "**LEFT**" buttons to rotate the Speed Dome.

**STEP6** Press "**ESC**" button to come back to Preset menu.

**STEP7** Press "**SAVE**" button to save the setting, and press "**CANCEL**" to discard the setting.

 **Notice:** *how to use the presetting point:*

*Users can use the number keys to switch the preset point in PTZ mode. First press "**PTZ**" button to enter PTZ mode, then press the number key such as "**1**", and the Speed Dome will move to preset point 1.*

### 6. COPY TO

You can use this option to copy the settings of this channel to all channels or any other selected channel.

### 3.2.6 User Configuration

User Configuration is shown as Fig 3.16. The default username is Admin. Administrator can add users, set users' authorization and delete users.

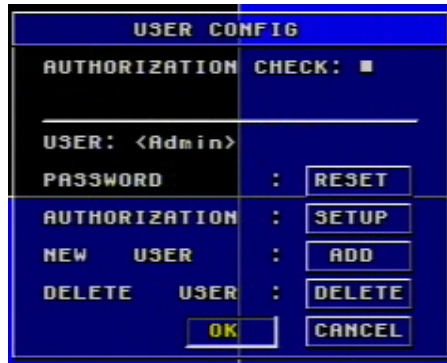


Fig 3.16 User Configuration

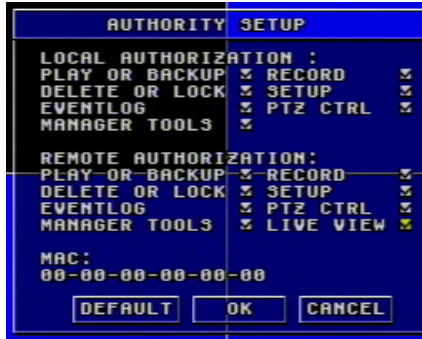


Fig 3.17 Authority Setup

### 1. AUTHORIZATION CHECK

If you put a checkmark in "**AUTHORIZATION CHECK**", all users need to input the password before entering the Main Menu.

If you do not check "**AUTHORIZATION CHECK**", users can enter the system directly without password.

### 2. USER

Press "**Enter**" key to switch to another user. Use "+" and "-" buttons change users.

### 3. PASSWORD

The default password of administrator is '123456'. Users can change password that is made up of numbers from 0 to 9.

### 4. AUTHORIZATION

**STEP1** Move the cursor to "**User**" option, then press "**Enter**" key to switch to the user whose authorization you want to modify.

**STEP2** Move the cursor to "**SETUP**" button on the screen.

**STEP3** Press "**Enter**" key, Authority Setup menu (refer to Fig. 3.17) will pop up.

**STEP4** In the Authority Setup menu, move the cursor to "**DEFAULT**".

**STEP5** Press "**Enter**" key. The default authorization will be set.

The default authorizations include:

- Live preview, playback, backup, and Record in local system
- Live preview, playback, backup, and Record in remote network client

### 5. NEW USER

**STEP1** Move the cursor to "**ADD**" button on the screen.

**STEP2** Press "**Enter**" key, the Add User menu will display.

**STEP3** Input username and password.

**STEP4** Press "**OK**" button to confirm the option.

Username is formed by numbers or letters with a maximum of 15 characters. The Password is numbers between 0 and 9.

6. DELETE USER

**STEP1** Move the cursor to the "DEL" button on the screen.

**STEP2** Press "Enter" key to confirm the operation. When a user is deleted, the username and password will no longer exist in the system.

3.2.7 Network Configuration

Network Configuration menu is shown as Fig. 3.18.

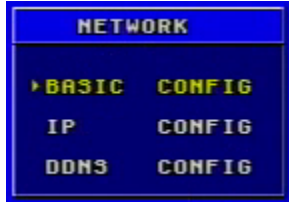


Fig 3.18 Network Configuration



Fig 3.19 Basic Configuration

**BASIC CONFIGURATION**

Basic Configuration submenu is shown as Fig. 3.19.

**STEP1** Move the cursor to "Basic configuration".

**STEP2** Press "Enter" key to enter the Basic Configuration menu.

1. NET SERVER

If you select the check box and set the port number of the server, you will enable the NET SERVER.

2. NET VIDEO QUALITY

This refers to the picture quality in remote surveillance. There are three options: low, medium and high. The higher of the quality value, the clearer the image is, the lower the quality value, the less bandwidth the video takes up. The default level is medium.

**IP CONFIGURATION**

IP Configuration submenu is shown as Fig. 3.20.

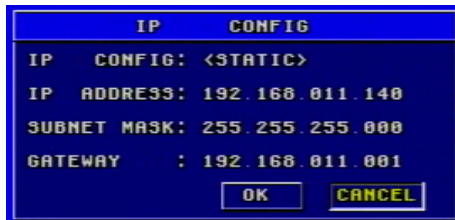
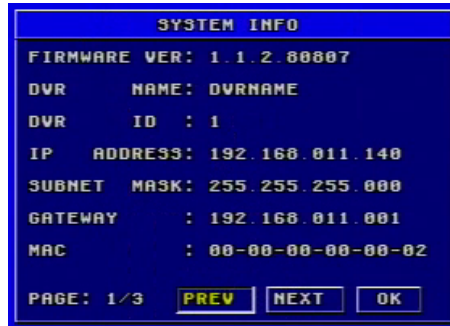


Fig 3.20 IP Configuration





**Fig 3.21 System Information**

This is the DVR's IP configuration. There are three options: STATIC, DHCP and PPPoE.

If you use the Static IP address option you will need to access the router the DVR is attached and get the setup information. You can do this by going to the run option on a computer that is attached to the same router as the DVR and typing cmd or command to get to a command prompt. At the command prompt type ipconfig and hit ENTER to access the network information. The screen will list the computer's IP address, the Subnet Mask, and the Gateway. The IP address you assign to the DVR must have the same first 3 sets of numbers as the Gateway. If the computer's IP address ends in a 1 or 2-digit number, you can select an IP address ending in 100, if the computer's IP address ends in a number in the 100s then select an IP address ending in 200.

**STEP1** Input IP Address, Subnet Mask and Gateway

**STEP2** Press "OK" button to modify the IP Configuration menu.

If you select DHCP, the router will automatically assign the IP address. After selecting DHCP, you need to wait about 30 seconds. The automatically assigned IP will be displayed in the system information window.

If you are attaching the DVR directly to a DSL or cable modem/router, you can use the PPPoE option. You need to input username and password when connecting to internet. You would get the username and password information from your internet service provider.

If you press the "INFO" button, System Information menu can be displayed on the screen as long as the DVR connects with the network well (refer to Fig. 3.21).



**Notice:** • If the local area network has a DHCP server or the router the DVR is attached to supports DHCP we recommend using the DHCP option.

• Before you set PPPoE, you need to reboot the modem. After setting the PPPoE, you need wait for a while for the settings to take effect.

## DDNS CONFIGURATION

DDNS Configuration submenu is shown as Fig. 3.22. The DVR does not currently support any DDNS servers in the USA, support may be added in future firmware updates.

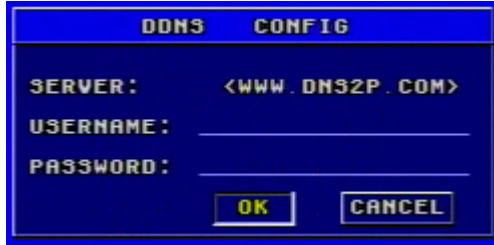


Fig 3.22 DDNS Configuration

### 3.2.8 Manager Tools

The Manager Tools menu is shown as Fig. 3.27.



Fig 3.27 Manager Tools

## SHUTDOWN SYSTEM

This option is used to shut down the system.

**STEP1** Enter the SHUTDOWN submenu.

The following words will be shown: 'Are you sure to shut down DVR system?'.

**STEP2** Press "Enter" key to confirm the operation.

## DISK MANAGER

Fig3.28 Disk Management

Disk Manager Submenu is shown as Fig. 3.28.

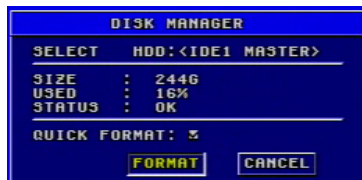


Fig 3.28 Disk Manager

There are two options: FORMAT and CANCEL.

1. QUICK FORMAT

If you check this item, you can format the hard drive quickly.

2. FORMAT

**STEP1** Select "**FORMAT**" button.

**STEP2** Press "**Enter**" key, a warning will pop up: 'Format will erase all data on this hdd! Format now?'

**STEP3** Press "**OK**" button to format the HDD; Press "**CANCEL**" or "**ESC**" button to cancel this operation.

**Notice:** • When a hard drive is used for the first time the system will remind you to format the HDD when the DVR is started up. HDD cannot record until it is formatted.

• Before you can format the HDD you must stop recording and playing back.

• Time it takes to format the HDD depends on the HDD capacity. The higher the capacity is, the longer it takes. Normally, a 40G HDD takes about eight seconds to format.

**SYSTEM LOG**

System log submenu is shown as Fig. 3.29.

The DVR will note all operations, status, and time automatically while working. You can view them through searching using the Log Search.



Fig 3.29 Log Search

1. LOCAL, NET, AND OTHER

Check the corresponding items of local operation, network client operation and other operation first. (Note: VLOSS is video loss)

2. TIME

Select start time and end time of the log file you want to view.

Press "**OK**" button to view the event log; Press "**CANCEL**" or "**ESC**" button to cancel this operation.

The information in log files contains start time, end time and log file types. For example, 110707:092151 means 2007-7-11 9:21:51 and N-L means the LOGIN of the NET.

If there are too many log lists, you can use "**PREV**" button to page up and "**NEXT**" button to page down.

## SYSTEM INFORMATION

System information submenu is shown as Fig. 3.30. It displays the information about the system, such as firmware version, device name, DVR IP ADDRESS, Client information and so on.

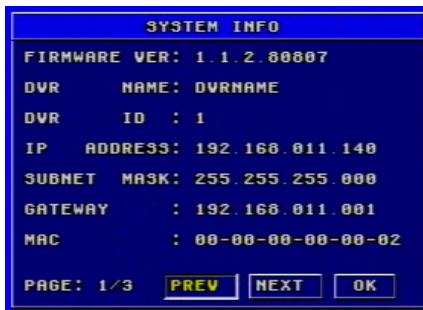


Fig 3.30 System Information

Press the "INFO" button on the front panel and it will display the system information on the screen.

## UPDATE FIRMWARE



Fig 3.31 Update Firmware

Update Firmware submenu is shown as Fig. 3.31. Users can use USB flash drive to update the firmware.

Steps are described below:

- STEP1** Make sure the firmware update is on the USB flash drive.
- STEP2** Enter the menu after word-'USB' is displayed on the live mode.
- STEP3** Move the cursor to "UPDATE" button.
- STEP4** Press "Enter" key to start updating.
- STEP5** After the program is upgraded, the system will restart.

## LOAD DEFAULT

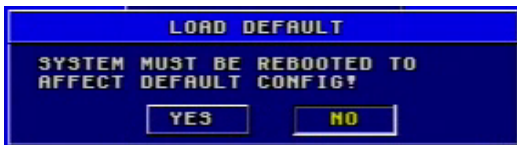


Fig 3.33 Load Default

Load Default menu is shown as Fig. 3.33. Click YES, and it will recover the default setting installed at the factory.

## IMPORT CONFIGURATION & EXPORT CONFIGURATION

This function is used to help users manage multiple DVRs conveniently. When users need to set up the same parameters in more than one DVR, they can copy one DVR's setting to all others without setting them up one by one.

**EXPORT CONFIGURATION** can copy one DVR's parameter settings to a USB flash drive; and then use **IMPORT CONFIGURATION** to input the settings copied onto the USB flash drive from the first DVR to another DVR.

## CLEAR ALARM OUT

This item is to clear the current alarm out, please refer to Fig. 3.34.

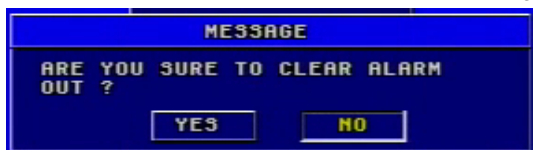


Fig 3.34 Clear Alarm Out

## 3.3 Shortcut Menu

### 3.3.1 PTZ

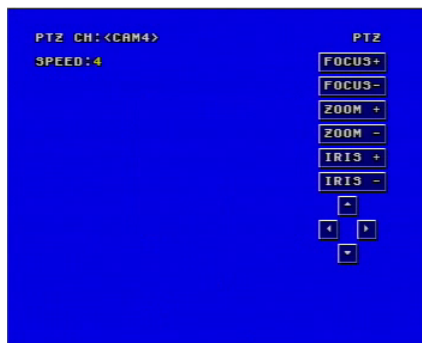


Fig 3.35 PTZ Mode

PTZ mode is shown as Fig. 3.35. To switch the channel to which the video output of the Speed Dome connects you press "**PTZ**" button to enter the PTZ mode.

In the live view of PTZ mode the default channel is channel 1, you can use mouse to change the channel number to enter the corresponding channel PTZ mode.

## SPEED

**STEP1** In PTZ mode, press "**Speed**" button.

**STEP2** Press "+" and "-" buttons to change the rotational speed.

**STEP3** Press "**Up**", "**Down**", "**Left**" and "**Right**" buttons to rotate the Speed Dome to a certain position.

**ZOOM**

- STEP4** In PTZ mode, press "**ZOOM**" button.
- STEP5** Press "+" and "-" buttons to zoom in and zoom out.

**FOCUS**

- STEP1** In PTZ mode, press "**FOCUS**" button.
- STEP2** Press "+" and "-" buttons to control focus.

**IRIS**

- STEP1** In PTZ mode, press "**IRIS**" button.
- STEP2** Press "+" and "-" buttons to change the brightness of the Speed Dome.

**3.3.2 Search**

Press the "**Search**" button, there are five submenus displayed on the screen: **PLAYBACK**, **BACKUP**, **DELETE** and **LOCK**. Data menu is shown as Fig. 3.36.

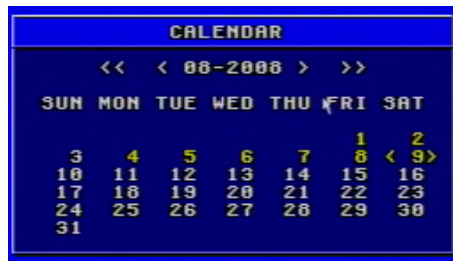


**Fig 3.36 Data Menu**

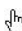
**PLAYBACK**

1. Select the Date

- STEP1** In Playback menu, move the cursor to Calendar
- STEP2** Press "**Enter**" key to enter the Calendar submenu. Calendar submenu is shown as Fig. 3.37.



**Fig 3.37 Calendar**

 **Notice:** You can search for records by time search or event search. The times displayed in red have record files.

## 2. Search by Time

All records can be searched through this option. Steps of searching by time are below:

- STEP1** In Calendar submenu, select date.
- STEP2** Press "**Enter**" key to enter the Playback submenu, refer to Fig. 3.38.
- STEP3** Press "**Enter**" key to select channels.
- STEP4** Select time of the day  
The times in red have record files. The first line is hour, and the second line is minute.
- STEP5** Select "**PLAY**" button.
- STEP6** Press "**Enter**" key to play the record.



**Notice:** • the DVR supports playing back in full screen mode and quad screen mode.

- When you play back the record in full screen mode, you may use the number buttons or "**Up**", "**Down**", "**Left**" and "**Right**" buttons to switch the channel.

- When you play back the record in quad screen mode, you can only see the record playing back as normal speed.

• When you play back the record, you may press "**INFO**" button on the front panel to play or stop channel audio.



Fig 3.38 Playback

## 3. Search by Event

Steps for searching by event are below:

- STEP1** In Playback submenu, select the camera and date. The dates having recorded events are highlighted in red.
- STEP2** Move the cursor to event option.  
The Event search types are: MOTION and SENSOR
- STEP3** Press the "**Down**" button to move the cursor to "**EVENTS**" button in the submenu.
- STEP4** Press "**Enter**" key to enter the event list.
- STEP5** Views the list information.  
Taking one of the event records information as an example the meanings of the words are described below:
  - CH: Channel
  - START TIME: The start time of the record.
  - TYPE: The type of the event. There are two types of event: MOTION and SENSOR.
  - M: Motion detection
  - A: Sensor detection
  - LOCK: Lock status of files.

- STEP6** Choose an event record.
- STEP7** Press "**Enter**" key to play back the record
- STEP8** Press "**Stop**" button to get back to live display mode.

 **Notice:** If event list is over one page, use "**PREV**" and "**NEXT**" buttons to view next page.

## BACKUP & VIEW BACKUP

### 1. BACKUP

Select the Backup submenu in the Data menu to enter the Backup submenu shown as Fig. 3.39.

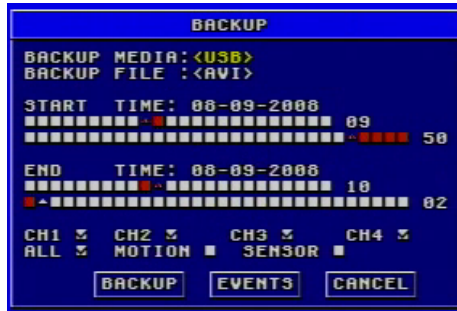


Fig 3.39 Backup

#### (1) BACKUP MEDIA

Backup media refers to the device you are copying the record to. There are five options: DVD-R, DVD-RW, DVD+R, DVD+RW and USB disk. They connect with DVR through USB interface.

#### (2) BACKUP FILE

It denotes the format of backup files. This system supports AVI and DAT video formats.

- When selecting the format that DVR supports, the video format of backup files is DAT.
- Before playing the record of AVI format, it is necessary to install the decoder at first.

#### (3) START TIME

It is start time of recording at backup. The first line is hour, and the second line is minute. Users should choose the date firstly and choose the time secondly.

#### (4) END TIME

It is end time of recording at backup. The first line is hour, and the second line is minute. Users should choose the date firstly and choose the time secondly.

#### (5) CHANNEL

It supports to select more than one channel at the same time.

#### (6) EVENTS

There are two options: motion and sensor. If you want to backup all records, please select "**ALL**".



(7) BACKUP

Before to backup, users should select BACKUP MEDIA, BACKUP FILE, CHANNEL, START TIME, END TIME and EVENTS.

**STEP1** Press "**BACKUP**" button, the backup information of DVR will display on the screen (refer to Fig. 3.40).



Fig 3.40 Backup Information

**STEP2** Press "**START**" button, and backup will start.

The progress of backup will be displayed on the screen. If stopping recording at backup, its speed will be faster.

**STEP3** When the backup is over, the system will pop up a dialog box saying 'BACKUP COMPLETELY'.

2. VIEW BACKUP

If backing up with AVI format, most media players can play directly as long as to install a decoder in advance. Installation method: Enter "Decode" file (being created automatically by system at your backup.), then double-click "InstallDecode.bat" file to Install successfully.

If backing up with the format DVR supports, the file player will be copied automatically in the file copying media.

**DELETE**

Delete submenu is shown as Fig. 3.42. The operation is shown below:

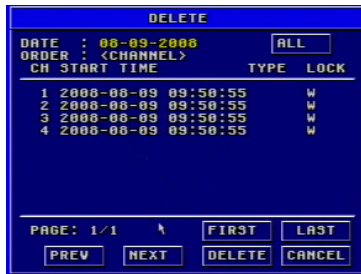


Fig 3.42 Delete

**STEP1** Press "**Enter**" key to enter the Delete submenu.

**STEP2** Press "**Enter**" key to select the record.

**STEP3** Move the cursor to "**DELETE**" button and press "**Enter**" key, information will be given as below:

'SOME RECORDS WILL BE DELETED, CONTINUE?'

**STEP4** Select "**OK**" button.

**STEP5** Press "**Enter**" key to delete this record.

## LOCK/UNLOCK

Lock submenu is shown as Fig. 3.43. Its function is to lock or unlock the record.

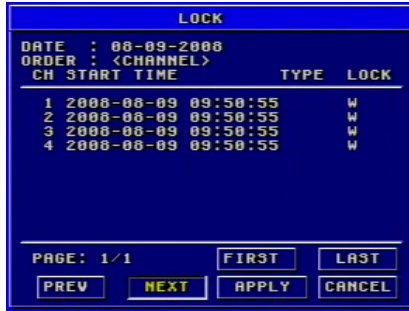


Fig 3.43 LOCK/UNLOCK

Use "**Enter**" key to change the state. If a record event is locked, it cannot be deleted or covered.

### 3.3.3 Information

Press "**INFO**" button, and the information will appear on the screen, such as HDD quantity, usable rate of HDD, record mode including manual/alarm/motion, etc.

### 3.3.4 Other

- In live display mode, if pressing "**Up**" button, it will display the first channel in full screen.
- If pressing "**Down**" button, it will display the second channel in full screen.
- If pressing "**Left**" button, it will display the third channel in full screen.
- If pressing "**Right**" button, it will display the fourth channel in full screen.
- If pressing "**Enter**" button, it will display the four-divided channel.
- If pressing "**Audio**" button, it will switch the voice of corresponding channel in live display mode.

# CHAPTER 4 Remote Surveillance

## 4.1 Accessing DVR

The system supports remote surveillance through a network or Internet.

This DVR supports five users logging in at the same time.

First, the DVR needs to be connected with a router so that it can be accessed over the network or Internet. As for network access, it supports Win2000/XP/Vista. Second, you need to set up the network configuration in the DVR to work with the router. The specific setup steps are shown in the following sections.

### 4.1.1 Accessing DVR Over a Network

**STEP1** Input IP address, Subnet, and Gateway, **please refer to section 3.2.7 Network Configuration**. If using DHCP, please enable DHCP in both of DVR and router.

**STEP2** Enter "Video" submenu to set network video parameters like resolution, frame rate, etc.

**STEP3** Open an Internet Explorer browser on a computer on the same network. Input the IP address of the DVR in an Internet Explorer textbox and hit enter.

**STEP4** Internet Explorer will download ActiveX automatically. (Notice: Internet Explorer must be set up to permit downloading ActiveX controls. Please refer to Q7 in FAQ chapter) Then a window pops up and asks for user name and password.

**STEP5** Input name and password correctly, and enter. It will show the picture below:

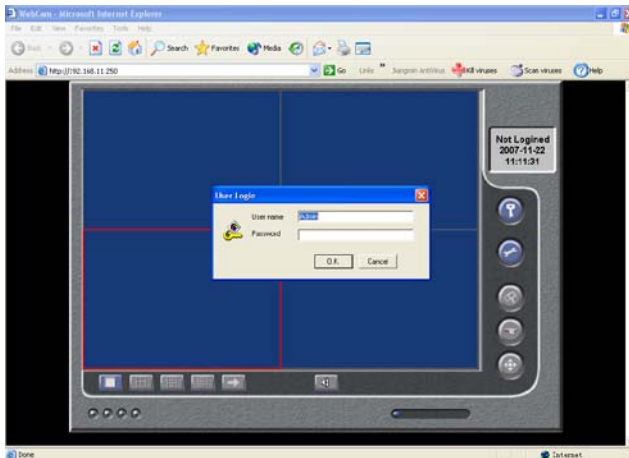


Fig 4.1 Network Client Interface

### 4.1.2 Accessing DVR Over the Internet

When accessing the DVR over the Internet, in addition to the above steps, you would then need to forward port 80 on the router the DVR is attached to, to the IP address of the DVR. You can get instructions on how to do this for most popular routers by going to the [www.portforward.com](http://www.portforward.com) website. On this website click on the orange “Routers” link in the second paragraph (RED box in Fig 4.1.1), which will open a list of router manufactures, then find the brand and model of your router on the list and click on the link. On the next page that opens click on the orange “Default Guide” link (BLUE box in Fig 4.1.2), this will take you to the port forwarding instructions for your router.

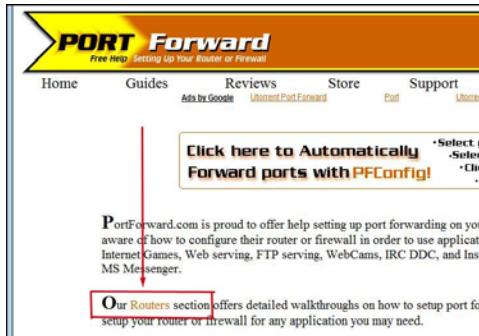


Fig 4.1.1



Fig 4.1.2

When you access the DVR from a remote computer, you also need to use a different address in the Internet Explorer browser window. Instead of entering the IP address of the DVR you need to enter the public IP address of the router the DVR is attached to. You can get this address by going to [www.myipaddress.com](http://www.myipaddress.com) from a computer that is attached to the same router as the DVR. This website will display the box in Fig 4.1.3 below that shows the IP address you need to use. It will be in the space where the below example shows 76.254.183.54.

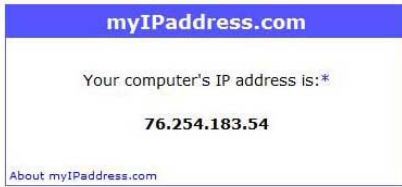


Fig 4.1.3

## 4.2 Main Interface

The function buttons of the remote surveillance display are shown in Fig.4.4.

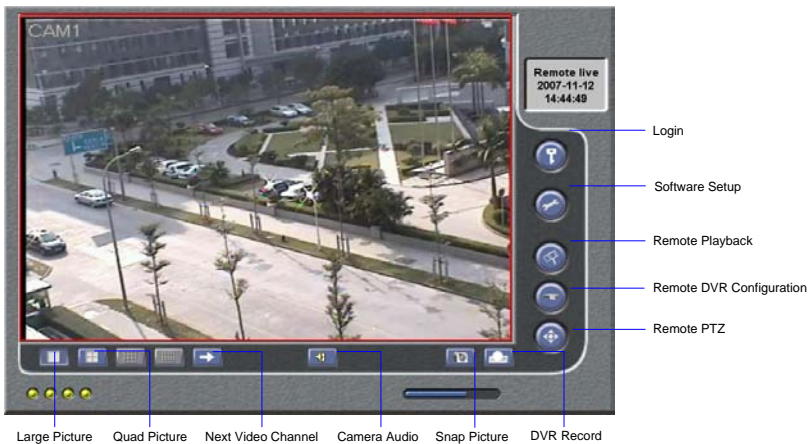



Fig 4.4 Main Interface

### 4.2.1 Login


The operation of the network client is the same as the DVR. Default username is 'Admin' and password '123456'.

**STEP1** Click  button to input username and password in the login window

**STEP2** Press "Enter" key to login.

 **Notice:** Click "EXIT" button to exit the system

### 4.2.2 Snap Picture

Take live picture. Press  to take the picture.

### 4.2.3 Parameter Settings

In Parameter Settings window, the number of pictures taken at once can be set. If selecting five, it can take five pictures every time you click "Snap Picture" button.


#### 4.2.4 Record

- STEP1** Click "DVR Record" button.
- STEP2** Select "Start Record" in drop down list to record.
- STEP3** Select "Stop Record" in drop down list to stop recording.

#### 4.2.5 Camera Audio (for cameras that have microphones)






There are two options: close camera audio and open camera audio. The setting steps are:

- STEP1** When you are in live display mode or playback mode, select a channel to display in Large Picture mode.
- STEP2** Right-click the image and then select "Open Audio" to play the camera's audio.

- STEP3** Click  button to turn the audio up or down.


#### 4.2.6 DVR Status Panel

Meanings of the colored indicator lights in the main interface are shown below:

1.  Grey light: Normal State
2.  Green light: Manual Record State
3.  Yellow light: Motion Detection Record State
4.  Red light: Sensor Alarm Record State
5.  Blue light: Video Loss State

### 4.3 Remote Playback and Search

#### 4.3.1 Remote Playback

Click  button on Main Interface to enter playback mode, which is shown as Fig 4.5 Remote Playback.

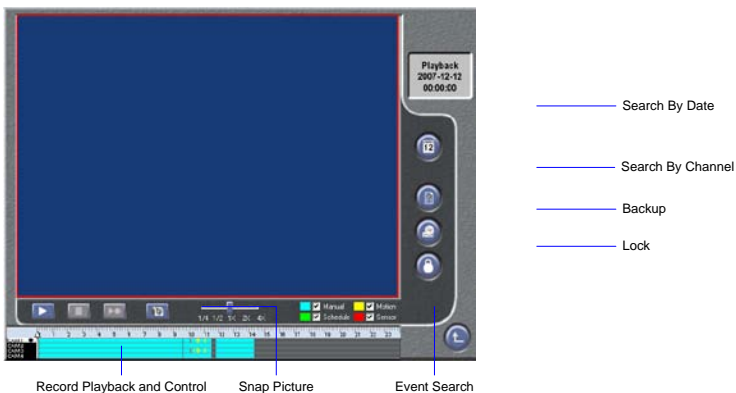





Fig 4.5 Remote Playback

Meanings of the function buttons in Remote Playback window are shown below:





1.  : Play /Pause.
2.  : Stop.
3.  : Next frame. This button will be valid when playback is paused.
4. You can adjust the speed for playing record in the area shown as Fig 4.6 Speed.



**Fig 4.7 Data Preview**


Fig 4.7 Data Preview shows with channels have recorded at data at different times. In the figure, left side shows the available channels. When a certain channel has been selected for playback, its background color will be highlighted and '★' sign will appear beside the channel title.

The center area of data preview gives details of the record files. Different colors of the bar show different types of records. The following are the definitions of the color bars:

-  Blue: Manual Record Events
-  Green: Schedule Record Events
-  Yellow: Motion Detection Record Events
-  Red: Sensor Alarm Record Events

The ruler on top of the bar shows the 24 hours in a day. Right-click the ruler, it will be magnified 10 multiples, so that users can select accurate time.


When searching for a certain section of a record, please draw the bar to the right position. If necessary, right-click the bar to see the magnified time marks to search more precisely.

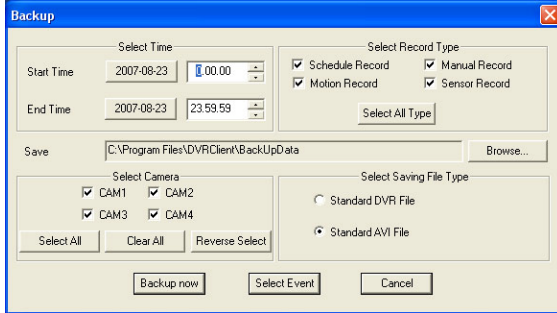
**STEP1** Click  button to play the selected record.

When returning to live display mode after finishing remote playback, it will display 'connect...' on the screen, and you may click "**Large Picture**" or "**Quad Picture**" button to refresh the screen to get a live picture.

### 4.3.2 Other Functions

#### BACKUP

Click  button to enter the Backup window shown as Fig 4.8 Backup.



**Fig 4.8 Backup**

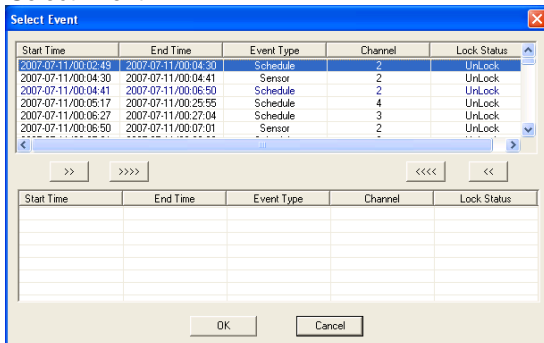
There are two methods of backup: by time and by event.

#### 1. TIME BACKUP

- STEP1** Select time and record type.
- STEP2** Select camera.
- STEP3** Press "**Browse...**" button to select the folder with saved backup files.
- STEP4** Select cameras that you want to backup.
- STEP5** Select the type of backup file.
- STEP6** Click "**Backup Now**" button, backup will begin.

#### 2. EVENT BACKUP

- STEP1** Select time and record type.
- STEP2** Select camera.
- STEP3** Press "**Browse...**" button to select the folder with saved backup files.
- STEP4** Select cameras that you want to backup.
- STEP5** Select the type of backup file.
- STEP6** Click "**Select Event**" button to enter Select Event window shown as Fig 4.9 Select Event.



**Fig 4.9 Select Event**



1. Choose event and press ">>" button to go to backup list, Click ">>>>" to choose all events.
2. Choose event list and press "<<" button to clear selected event; click "<<<<" button to clear all events.

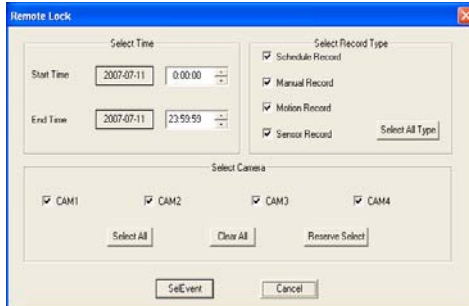
**STEP7** Click "OK" button to run the backup.

**LOCK /UNLOCK**

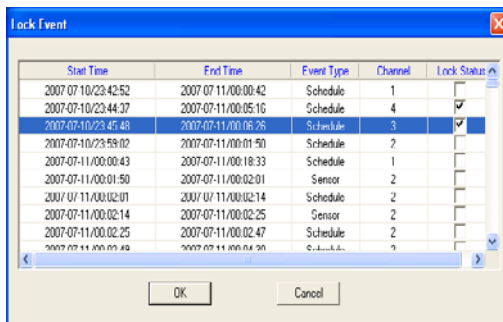
You can use this option to select to lock or unlock files.



**STEP1** Click button to enter Remote Lock window as Fig 4.10 Remote Lock.



**Fig 4.10 Remote Lock**



**Fig 4.11 Lock Event**

**STEP2** Select time and record type.

**STEP3** Select camera.


**STEP4** Click "Select Event" button, system will find the corresponding event and pop up the LOCK EVENT window shown as Fig 4.11 Lock Event.

**STEP5** Check the check box to change lock status.

Lock Status shows '√' indicating that the event is locked, otherwise it means unlocked.

**STEP6** Click "OK" button to confirm the operation.

## 4.4 Remote DVR Configuration

Click  button in Main Interface to enter the DVR Configuration interface shown as Fig 4.12 Remote DVR Configuration.



**Fig 4.12 Remote DVR Configuration**

Definitions of buttons in Fig 4.12 are below:



System Configuration



Live configuration



Record Configuration



Alarm Configuration



PTZ Configuration



User Configuration




Management Tools



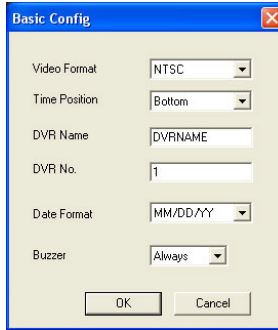
Return

Through the Remote Configuration interface, users can set all configurations remotely. Its operation is the same as that in the DVR.

### 4.4.1 Basic Configuration

Click  button in Remote Configuration and enter Basic Configuration shown as below Fig 4.13 Basic Configuration.

After changing settings, click the "OK" button, the settings will be saved and enabled on the DVR.



**Fig 4.13 Basic Configuration**

**1. Video Format**

Select video format in the drop down list. There are two video formats: PAL and NTSC.

**2. Time Position**

Select time position on the DVR display in the drop down list.

**3. DVR Name**

Change the name of the DVR.

**4. DVR No.**

Give a number to DVR, this can be useful if you have more then one DVR.


**5. Date Format**

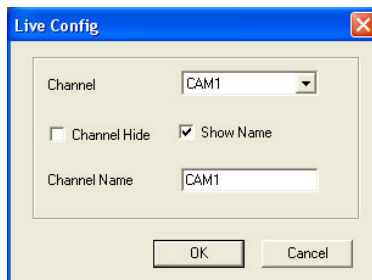
Select the option in the drop down list to change the date format. There are three date formats: YY/MM/DD, DD/MM/YY, and MM/DD/YY.

**6. Buzzer**

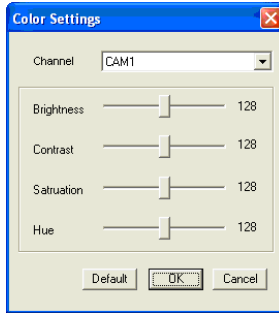
Select the option in the drop down list to change the length of time the buzzer will sound.

**4.4.2 Live Configuration**

Click  button Remote Configuration, and a drop down menu will appear. There are the Live Configuration window and Color Settings window shown in Fig 4.14 Live Configuration and Fig 4.15 Color Settings.



**Fig 4.14 Live Configuration**



**Fig 4.15 Color Settings**

**LIVE CONFIGURATION**

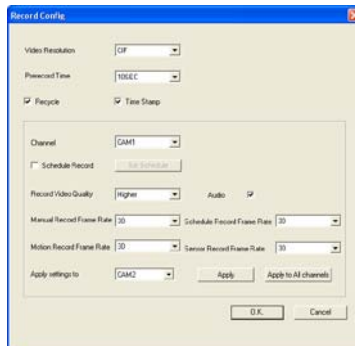
1. Channel  
Select the option in the drop down list to change the channel of the camera.
2. Channel Hide  
Select the check box to hide the picture in the live display mode.
3. Show Name  
Select the check box to hide the name of DVR channel in the live display mode.
4. Channel Name  
Change the name of the channel.

**COLOR SETTINGS**

1. Channel  
Select the option in the drop down list to change the channel of DVR.
2. Brightness /Contrast /Saturation /Hue  
Adjust the brightness, contrast, saturation, and hue for every channel by moving the slider.

**4.4.3 Record Configuration**

Record Configuration window is shown as Fig 4.16 Record Configuration.



**Fig 4.16 Record Configuration**

1. Parameter Setting

This setting is the same as '3.2.3 Record Configuration' of the DVR. If you change it on Network Client, the DVR will change along with it.

2. Schedule Record

The default value of Schedule Record is not active.

**STEP1** Click the check box of the Schedule Record, and it will be active. The default schedule time is every day.

**STEP2** Click "**Set Schedule**" button, and Schedule Configuration window will pop up as Fig 4.17 Schedule Configuration.

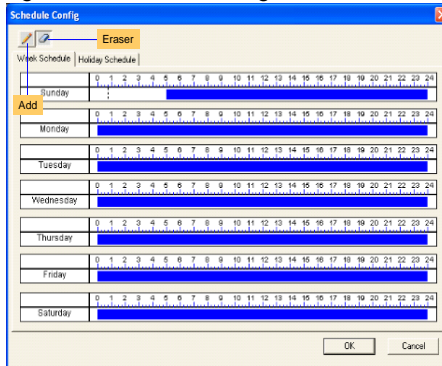




Fig 4.17 Schedule Configuration

**STEP3** Click "**Eraser**" button and click on the weekday schedule to delete the time; Click "**Add**" button and click on the weekday schedule to add the time.

4.4.4 Alarm Configuration

Click  button in Remote Configuration, and a drop down menu will appear. There is the Motion Alarm window, Sensor Alarm window and Other Alarm window. The setting is the same as '3.2.4 Alarm Configuration' of the DVR. If you change it here, the DVR will change along with it.

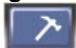
4.4.5 Network Configuration

Click  button to change the video quality of Network Client.

4.4.6 User Configuration

The setting of User Configuration window is the same as '3.2.6 User Configuration' of the DVR. The added users in one server can login to the Server and Client.

4.4.7 Management Tools

Click  button in Remote Configuration, and a drop down menu will appear. There is the Disk Management window, Software Update window, Load Default window, System Information window and System Log window.

**DISK MANAGEMENT**

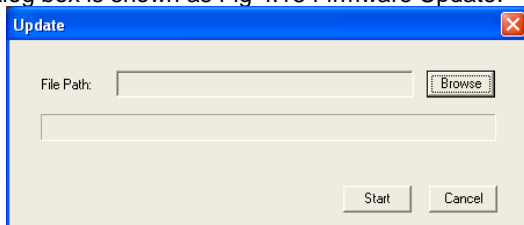
Displays the information of the hard disk.

**FIRMWARE UPDATE**

DVR firmware can be updated remotely through Network Client software.

**STEP1** Select the path to the updating file.

**STEP2** Click "**Start**" button, the updating progress bar will appear. The Update dialog box is shown as Fig 4.18 Firmware Update.



**Fig 4.18 Firmware Update**

**STEP3** After finishing the update, the DVR needs to reboot to run the new firmware.

**LOAD DEFAULT**

Load default setup.

**SYSTEM INFORMATION**

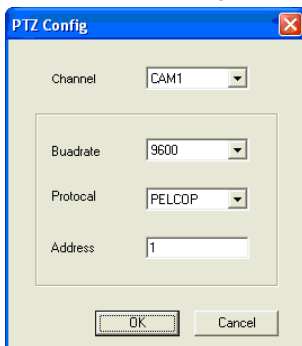
This displays the information of the DVR, such as firmware version, DVR name, MAC address and so on.

**SYSTEM LOG**

This displays the information about operating information on the DVR.

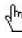
**4.5 Remote PTZ****PARAMETERS**

Before operating Remote PTZ, you need to set the PTZ configuration. The PTZ Configuration window is shown as Fig 4.19 PTZ Configuration.



**Fig 4.19 PTZ Configuration**


1. Channel  
Select the channel used by the PTZ camera.
2. Baud Rate  
Select the Baud Rate of the PTZ camera. The default value is 9600.
3. Protocol  
The communication protocol of PTZ camera.
4. Address  
The communication address of PTZ camera, also known as device ID

 **Notice:** *Baud rate and protocol should be found in user's manual of the PTZ camera*





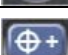
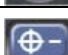
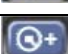
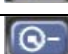





## PTZ CONTROL INTERFACE



**Fig 4.20 PTZ Control**

Click  button in Main Interface and enter PTZ Control interface shown as Fig 4.20 PTZ Control.

You can control PTZ cameras using the function buttons on the right side of the interface. Functions of the buttons are described in the table below:

Icon	Description	Icon	Description
	Right Moves the camera to the right		Left Moves the camera to the left.
	Up Moves the camera up		Down Moves the camera down
	FOCUS+ Moves the camera's focus further away		FOCUS- Moves the camera's focus closer
	ZOOM+ Zooms the camera out		ZOOM- Zooms the camera in.
	IRIS+ Increases the camera's light.		IRIS- Decreases the camera's light.
	Go to a Preset Point		Set a Preset Point
	Adjust PTZ speed Sets the rotational speed of the camera		

# CHAPTER 5 Operation with a Mouse

## 5.1 Switching Display

Channels can be selected and altered using a Mouse. If the display is in multi-screen mode, clicking on a picture it will switch it to full screen; and if in full screen, clicking on an image it will change it to multi-screen mode.

## 5.2 Enter Menu List

In live mode, by right clicking on the picture you can display the menu list. There are four menus to choose: Search, Configuration, PTZ Control and stop record/start record.

### 5.2.1 Search

Click "**Search**" menu to enter "**Data**" menu and select the submenu after entering the Menu list. Please refer to '3.3.2 Search' and view the functions of the submenu.

Right click on the picture to exit the menu.

### 5.2.2 Configuration

Configuration submenu is used to display the Main Menu

Click "**Configuration**" menu to enter the Main Menu and select the submenu after entering the Menu List. Please refer to '3.2 Main Menu Setting' to view the function of the submenu.

Right click on the picture to exit the menu.

### 5.2.3 PTZ Control

Click "**PTZ Control**" menu to enter PTZ mode. The shortcut menu of PTZ is shown as Fig 5.1

You can control the focus, zoom, and iris through this interface.

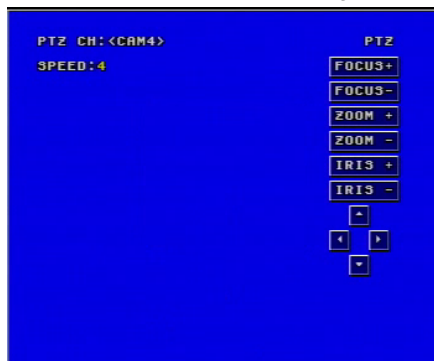


Fig 5.1 Shortcut Menu of PTZ



**FOCUS**

Click "**FOCUS+**" button to focus the Speed Dome further away. Click "**FOCUS-**" button to focus the Speed Dome closer.

**ZOOM**

Click "**ZOOM+**" and "**ZOOM-**" buttons to control the Speed Dome zooming in and zooming out.

**IRIS**

Click "**IRIS+**" and "**IRIS-**" buttons to increase and decrease the light in the image in the Speed Dome.

**Notice:** ▲, ◀, ▶ and ▼ buttons are used to control the Speed Dome to move up, right, left and down.

**5.2.4 Stop Record/Start Record**

This menu is for starting and stopping recording.

**Stop record**

Click this item and the DVR will stop recording. At the same time, this item will change into "start record".

**Start Record**





Click this item, it will enable recording and the item will change into "stop record"

**5.3 Fast Reverse and Fast Forward**

In playback, the main functional keys are described below:



**Fig 5.2 Fast Reverse and Fast Forward**

- Click  button to play back the record.
- Click  button to stop playing back.
- Click  button to fast reverse the record.
- Click  button to fast forward the record.

## CHAPTER 6 Mobile Surveillance

This DVR supports mobile surveillance by smart phones and PDAs with WinCE or Symbian operating systems that are on 3G networks. Among them, Dopod D600 (WM5) and Dopod S1 (WM6) have been tested and fully certified that they worked well with the DVR.

You need to setup the network configuration on the DVR before you can access mobile surveillance (**Please see Chapter 4 Remote Surveillance**). The following are the instructions for the two operating systems.



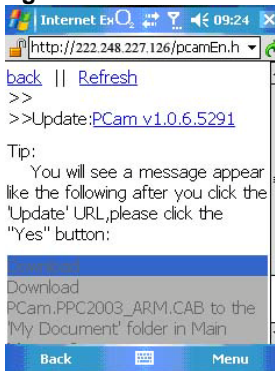
**Notice:** *Mobile devices can only access one channel at a time.*

### 6.1 By Smart Phone with WinCE Operating System

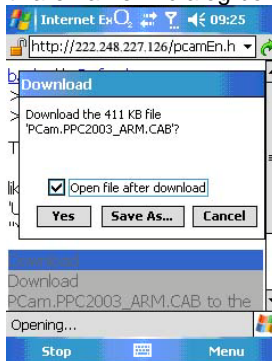
Please use smart phones or PDAs with WinCE version supported by this unit.

**STEP1** First, activate the network access on the mobile phone, and then run "Internet Explorer".

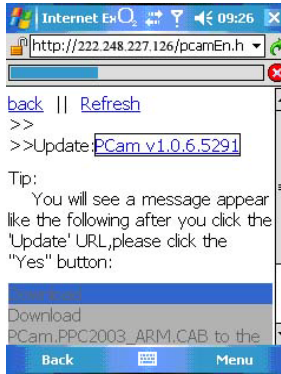
**STEP2** Input the public IP address you need to use to connect as shown below (**see 4.1.2 Accessing the DVR over the Internet**):



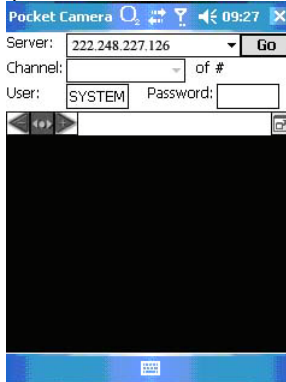
**STEP3** Click on the software name. A dialog box will pop up.



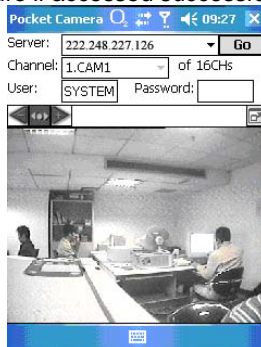
**STEP4** Click "Yes" to download and install.



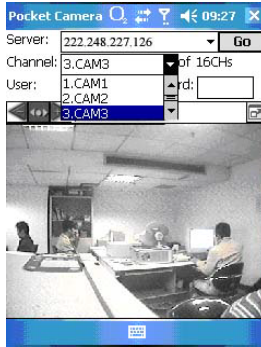
**STEP5** PCam will be opened after installed.



**STEP6** Input the server's address, ID, and password respectively in the columns of "Server", "User", and "Password". Then click "Go" to login to the DVR. It will show the picture if accessed successfully.



**STEP7** Camera 1 is the default display after login. Change the camera in the drop down menu of “Channel”.



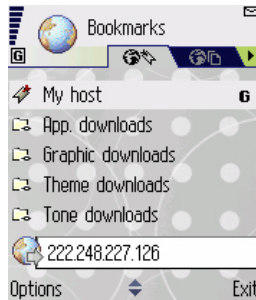
**Notice:** User name and password here are the same as that used on the DVR. The defaults are user name “admin” and password “123456”.

## 6.2 By Smart Phone with Symbian Operating System

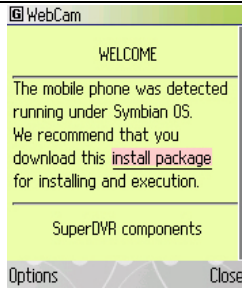
Please use smart phones or PDAs with Symbian version supported by this unit.

**STEP1** First, enable the network access on mobile phone, and then run Web browser.

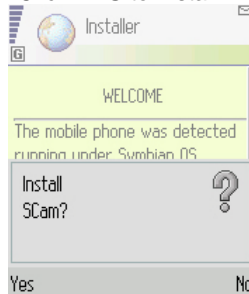
**STEP2** Input the DVR server’s IP address in a new-built bookmark (see **4.1.2 Accessing the DVR over the Internet**). Click this bookmark to connect with the DVR.



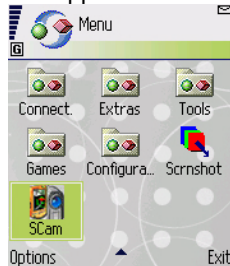
**STEP3** A welcome window will pop up with a link to download the software. Click “install package” to download.



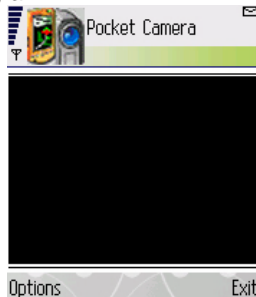
**STEP4** The security window will pop up after downloaded and ask if you want to install the package. Click YES to install.



**STEP5** A Scam shortcut icon appears on the system menu after finished.



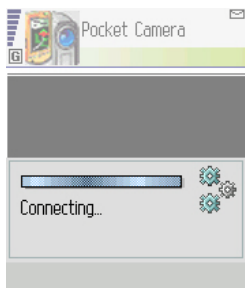
**STEP6** Run Scam program.



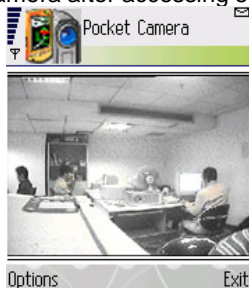
**STEP7** Click Options--->Settings to enter login interface.



**STEP8** Input the server's address, ID and password respectively. Then click OK to login to the DVR. **(See 4.1.2 Accessing the DVR over the Internet)**



**STEP9** It will show the camera after accessing successfully.



**Notice:** User name and password here are the same with that used on the DVR. The defaults are user name "admin" and password "123456".

## CHAPTER 7 Frequently Asked Questions

### **Q1. Why is the DVR not starting after connecting the power?**

- a. The adapter has been damaged. Please change the adapter
- b. The adapter is not producing enough power. Please remove the HDD to see if the DVR will start without it. If it does then replace the power adapter.
- c. Hardware problem with the DVR.

### **Q2. The power indicator of the DVR is on, but no output. Why?**

- a. The adapter is not producing enough power. Please remove the HDD to see if the DVR will start without it. If it does then replace the power adapter.
- b. The video format of the DVR is different from that of the monitor.
- c. Connection problem. Please check the cable and the ports of monitor and DVR.

### **Q3. Why are no images displayed in part or all of the channels of the DVR?**

- a. Connection problem. Please check the cable and the ports of the cameras and the DVR.
- b. Camera problem. Please check the cameras.
- c. The video format of the DVR is different from that of the cameras. Please change DVR system format to match the cameras.

### **Q4. Why can't my DVR find the Hard Drive?**

- a. The power adapter is not producing enough power. Please try another adapter.
- b. Connection problem. Please check the power and data cables.
- c. The hard drive is damaged. Try another one.

### **Q5. I cannot record, what could be wrong?**

- a. Hard Drive is not formatted. Please format it first.
- b. The recording function is not enabled or recording is not setup correctly.
- c. The hard drive is full and the recycle function is not enabled.
- d. The hard drive is damaged. Try another one.

## Q6. Mouse does not work, what could be wrong?

- Wait for 5 seconds after mouse connected then try.
- Not being identified. Plug/unplug several times.
- The mouse is incompatible. Please try a different mouse.

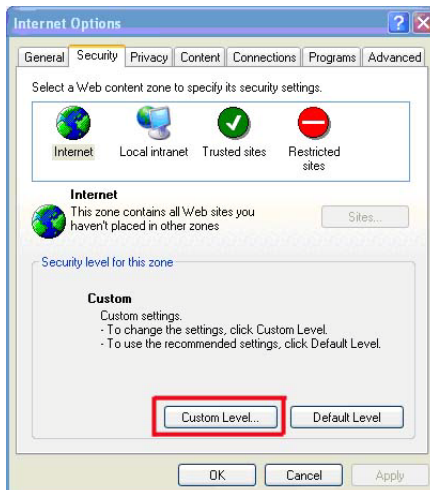
## Q7. Why can't my system download ActiveX controls?

- IE browser blocks ActiveX. Please use the following setup to enable downloading.

① Open IE browser. Click on the Tools option, Select the option to Turn Off Pop-up Blocker (Blue Arrows), Then Go To Internet Options (Green Arrow)

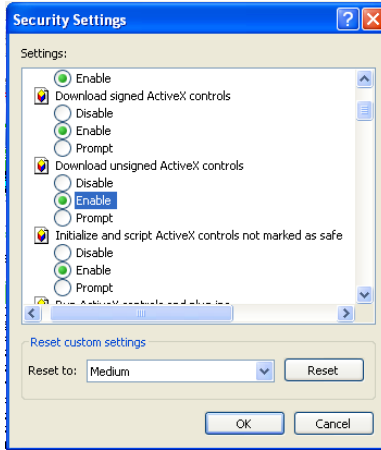


② Select Security-----Custom Level....





③ Enable all the sub options under “ActiveX controls and plug-ins”



④ Then click OK to finish setup.

b. Other plug-ins, firewalls, or anti-virus programs may block ActiveX. Please uninstall or close them.

**Notice:** When the Network Client is running on VISTA operation system, you also need set relational ActiveX parameters. Steps for setting parameters are shown as follows:

1. Open IE browser, then select 'Internet Options > Advanced > Security'
2. Enable 'Allow software to run or install even if the signature is invalid' and 'Allow active content to run in files on my computer'.
3. Click "OK" to finish the settings.

# Appendix A Standards & Specifications

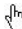
Model		4 Channel	
<b>VIDEO</b>			
Input Level		4×BNC 1.0Vp-p±10%.75Ohm	
Video Standard		NTSC / PAL	
Video Output		1×BNC 1.0Vp-p±10%.75Ohm , 1×S-Video	
Screen Split Control		1, 4Screen	
Display	Resolution	NTSC	720x480
		PAL	720x576
	Speed	NTSC	120FPS
		PAL	100FPS
<b>AUDIO</b>			
Compression		PCM	
Audio In/ Out		2CH/ 1CH	
Input Level		TBD(0.5~1.4Vp-p@20Kohm)	
<b>RECORDING</b>			
Compression		H.264	
Compression bit rate		64kbps-512kbps	
Resolution	NTSC	352(H)x240(V)(CIF); 704×480(D1)	
	PAL	352(H)x288(V)(CIF); 704×576(D1)	
Speed	NTSC	Max 120FPS(CIF); 30(D1)	
	PAL	Max 100FPS(CIF); 25(D1)	
Mode		Manual, Schedule, Motion detection, Sensor	
Motion detection		16*12 detection areas can setup	
HDD interface		SATA×1	
<b>SEARCHING</b>			
Searching Method		Time, Event	
<b>REMOTE SURVEILLANCE</b>			
Monitoring Environment		Self-carried LCD monitor, IE, CMS, SMART PHONE, PDA, etc.	
<b>ALARM</b>			
Sensor Input		4 Ports	
Alarm Output		1-Out (Programmable), Terminal	
Motion Detection		Available for Each Camera with Multi-detection Level	
<b>CONNECTOR</b>			
Video Input		BNC×4	
Main Monitor Output		BNC×2(Parallel), S-Video×1	
Audio Input (Mono)		RCA×2	
Audio Output (Mono)		RCA×1	
Sensor Input		Terminal Block	
Alarm Output		Terminal Block	
PTZ (RS-485)		2 Pins Terminal Block	
Ethernet		RJ-45, 10/100Mbps	
USB 1.1		2 Ports	
<b>ELECTRICAL</b>			
Power Source		DC 12V	
Power Consumption		TDP 21Watt	
<b>BACKUP</b>			
Digital Backup		Network, USB 1.1	
<b>OTHERS</b>			
OS		Embedded Linux operation system	
Duplexer or Triplex		Triplex	

Control Device	Front Panel, USB mouse, remote controller
PTZ control	Panel, mouse remote controller or internet

## Appendix B Record Capacity

The following table shows the record capacity of gross four channels recorded in one hour.

Picture Quality	PAL			NTSC		
	Resolution( CIF)	Total frame rate	Capability (M/hour)	Resolution	Total frame rate	Capability (G/hour)
Highest	352*288	100F/S	908M	352*240	120F/S	915M
Medium	352*288	100F/S	437M	352*240	120F/S	690M
Lowest	352*288	100F/S	150M	352*240	120F/S	440M

 **Notice:** The data of the above table comes from our tests that are just used for user's reference. Different definition and stabilization (object's movement) of the images will lead different results.

## Appendix C Abbreviation

Word s	Meaning	Word s	Meaning
L	Lock	HDD	Hard-drive Disk
M	Motion Detection	A	Sensor Detection
L-L	The Login of Local	VLoss	Video Loss
PB	Playback and Backup	N-L	The Login in or Login out of the Network
O-D	Disk full of System Logs	L-C	Change Configuration of the DVR from the DVR
SYS	The Event of System Setting or the System Reset	N-C	Change the Configuration of the DVR from Network
DVR	Digital Video Recorder	DEL	Deletion Event

## Q-SEE Product Warranty

Thank you for choosing our products.

All of our products have a conditional free warranty repair service for hardware within 12 months starting from purchase date, and a free exchange service within one month (valid for manufacturing defects). Permanent upgrading service is provided for the software.

### Liability Exclusions:

Any product malfunction, abnormalities in operation, or damage caused by the following reasons are not covered by the warranty. Service charges would apply.

- (1) Equipment damage caused by improper operation
- (2) Operating the equipment in improper environment and conditions. e.g., improper power, environment temperature, humidity and lightening strike etc. that causes equipment damage.
- (3) Damage caused by acts of nature: earthquake and fire etc.
- (4) Equipment damage caused by the maintenance of personnel not authorized by our company.
- (5) Product sold over 12 months ago.

In order to provide various services to you, please complete registration procedure after you purchase the product. Cut off or copy User's Information Card and fax or mail it to us after the card is filled in. You can also register the product by going to the [www.q-see.com](http://www.q-see.com) website and clicking on the Register link.

## Customer Information Card

<b>User's Name</b>	
<b>Company</b>	
<b>Address</b>	
<b>Postal code</b>	
<b>Phone Number</b>	
<b>E-mail</b>	
<b>Model Number</b>	
<b>Serial Number</b>	
<b>Purchase Date</b>	
<b>Distributor</b>	

## Free Manuals Download Website

<http://myh66.com>

<http://usermanuals.us>

<http://www.somanuals.com>

<http://www.4manuals.cc>

<http://www.manual-lib.com>

<http://www.404manual.com>

<http://www.luxmanual.com>

<http://aubethermostatmanual.com>

Golf course search by state

<http://golfingnear.com>

Email search by domain

<http://emailbydomain.com>

Auto manuals search

<http://auto.somanuals.com>

TV manuals search

<http://tv.somanuals.com>