



QS40198

**Mobile Phone Monitor Software User's Manual
For Windows Mobile Operating System**

Table of Contents

1	OVERVIEW.....	3
1.1	General Introduction.....	3
1.2	Feature.....	3
1.3	Environment	3
2	SOFTWARE INSTALLATION	5
3	OPERATION.....	7
3.1	DVR Setup.....	7
3.1.1	Encode	7
3.1.2	Account.....	7
3.2	Surveillance Software	8
3.3	Software Login.....	9
3.4	Video Browser.....	10
3.5	PTZ Control	10
3.6	Exit.....	11

1 Overview

1.1 General Introduction

This user's manual helps you install and use the mobile phone monitoring software based on Windows Mobile OS.

1.2 Features

This software has the following features:

- Use mobile phone to view real-time video.
- Support PTZ control operation.

1.3 Environment

- This software supports Windows Mobile OS (5.0 or higher); Please refer to the following brand list:
 - ◇ Dopod: C730 , HTC Touch , HKC Pearl , HTC6800, HTC6900, HTC6850 , P3450 , P4550 , S1 , S420 , S730 , Touch ; , LG KC1 , KS20 , 830 , 838 , 900 , Athena , C800(C858) , CHT 9000 , CHT 9100 , D600 , D802 , D810 , E806c , M700 , MUSE , P800W , U1000 ;
 - ◇ Mio: A501 ; OKWAP K868 Plus , K869 , A700 ;
 - ◇ ASUS: P526 , P535 , P735 ;
 - ◇ Holley: H8800 ; ;
 - ◇ Gigabyte: GSmart t600 , i350 , g-Smart , g-Smart i , i300 ;
 - ◇ Samsung: SGH-i718 ;
 - ◇ Lenovo: ET980 , ET600 , ET980T ;
 - ◇ Amoi: E850 , E860 , E870 ;
 - ◇ Gionee: S600 ;
 - ◇ Sharp: EM ONE ;

- ◇ CoolPAD: 728 , 728B , 768 , 838G2 ;
 - ◇ HP: 6925 , hw6828 , iPAQ rw6818 , rw6965 ;
 - ◇ UTStarcom: P903 , XV6700 ;
 - ◇ Toshiba:G500 ; O2 Flame , Argon , Atom , Atom Life , Exec , mini S , XDA Neo ,
Orbi , Stealth ; i-mate JAMA , JAO3 , JAQ , JAQ3 , JAQ4 , JASJAR , PDAL etc.
- The connected device shall support dual-stream function.

2 Software Installation

Copy the mobile phone monitoring software to the phone (Use PC synchronization software or network download function).

Click the software and then follow the steps one by one to install the software to the mobile phone.

You can also input the device IP address plus mss.cab in the browser address window. This way, you can install the program directly to the mobile phone. For example, if your device IP is 10.7.4.74, then you can input <http://10.7.4.47/mss.cab> in the browser. See Figure 2-1.

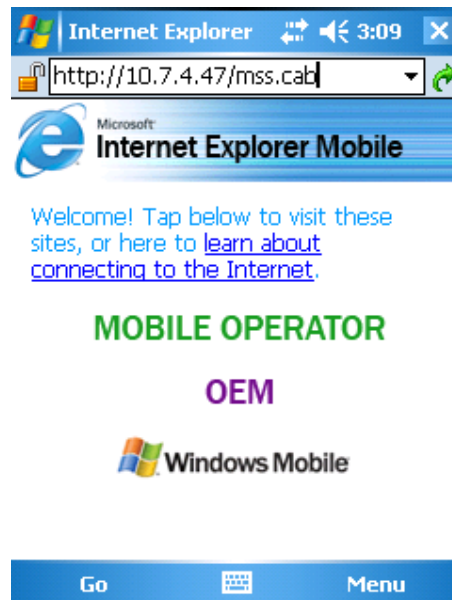


Figure 2-1

Then you will see the screen shown as Figure 2-2. You can install the software now.



Figure 2-2

After software installation, you will see the following screen shown as Figure 2-3.

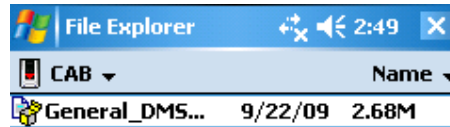


Figure 2-3

3 Operation

3.1 DVR Setup

Please setup the DVR encode information to make the device accessible by the mobile phone. You can go to the DVR Web or go to the DVR local end to complete the setup. In this user's manual, we show you how to setup at the local end.

Note

If mobile phone monitoring adversely affects regular monitoring, the mobile phone just gets the extra stream (not the main stream) to view the DVR.

3.1.1 Encode

The encode interface is shown as in Figure 3-1. You can refer to the following setup:

- Resolution: CIF/QCIF.
- Frame Rate: The value ranges from 5 to 10.
- Bit rate type: CBR
- Bit Rate: 64-256Kb/S

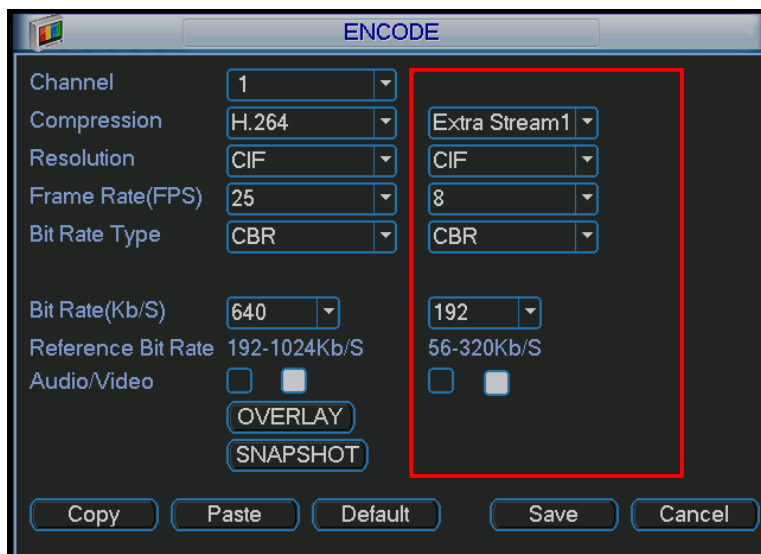


Figure 3-1

You can adjust the setup according to your mobile phone performance and network environment. You can lower the frame rate to get video if the network bandwidth is low.

3.1.2 Account

Make sure the account is reusable (supports multiple users using the same account to login at the same time) and has PTZ control rights. See **Error! Reference source not found.**

That way when other users are monitoring the DVR, you can still use the mobile phone to monitor and control PTZ operation. See Figure 3-2.

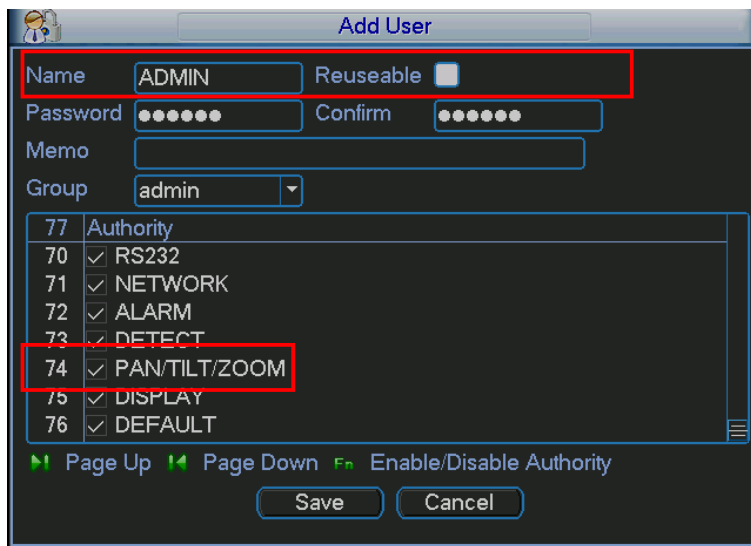



Figure 3-2

3.2 Surveillance Software

In the mobile phone, from Start to the Program, you can see the software shortcut menu. Its icon

is  (DMSS). See Figure 3-3.

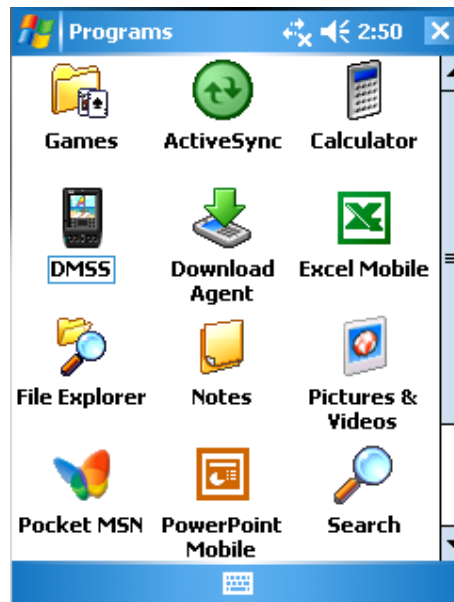


Figure 3-3

Click DMSS button, you will see the screen shown in Figure 3-4.

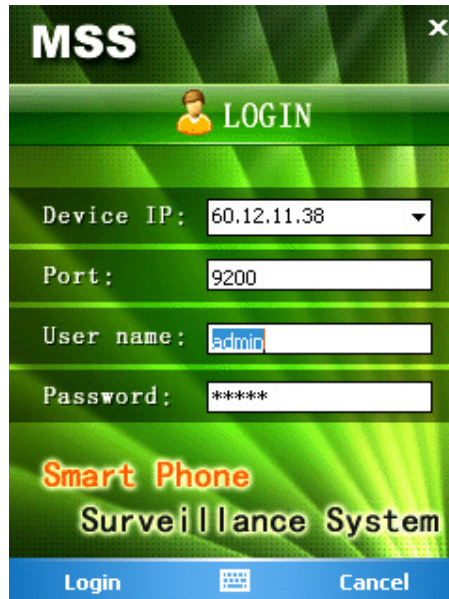


Figure 3-4

3.3 Software Login

In Figure 3-4, please input server IP, server port, user name and password. Click login button, you will see the following screen shown as Figure 3-5.

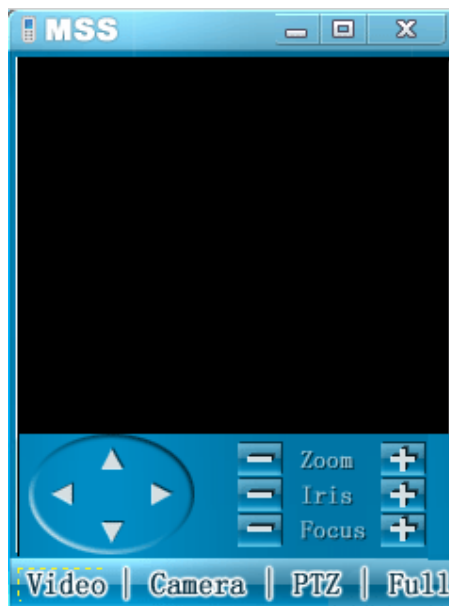


Figure 3-5

The mobile phone monitoring software can remember the recent login device information, so that you can login more easily the next time.

If you can not login, please check:

- Input information is valid.
- Server is running properly.

- Network connection is OK (please access a website via IE to make sure you have connected to the Internet.)

3.4 Video Browser

After you logged in, click Camera button first, then you can double click the device name in the device tree. Now you can view the device channel list.

You can double click the channel name, or you can select the channel name and then click Video button to see the video. The screen is shown as Figure 3-6.

During the real-time monitoring process, there are three ways for you to go to full-screen mode.


- Click the video window once;
- Click the full button;
- Click the icon  on the top right corner.



Figure 3-6

3.5 PTZ Control

There are two ways for you to control PTZ.

- In the full-screen mode (or you have opened the PTZ control interface), you can use the direction buttons on the mobile phone to control the PTZ direction.
- In non-real-time monitoring mode, you can click the PTZ button to go to the PTZ control screen. See Figure 3-7. You can use the direction buttons on the screen to access the corresponding function.



Figure 3-7

3.6 Exit

Click the icon  on the top right corner; you will exit the surveillance software.

Note

- Slight differences may be found in user interface.
- All the designs and software here are subject to change without prior written notice.

Free Manuals Download Website

<http://myh66.com>

<http://usermanuals.us>

<http://www.somanuals.com>

<http://www.4manuals.cc>

<http://www.manual-lib.com>

<http://www.404manual.com>

<http://www.luxmanual.com>

<http://aubethermostatmanual.com>

Golf course search by state

<http://golfingnear.com>

Email search by domain

<http://emailbydomain.com>

Auto manuals search

<http://auto.somanuals.com>

TV manuals search

<http://tv.somanuals.com>