



Q25DVR4ES

Economy Series

User Manual



Contact Us:

Q-See Products

**8015 E. Crystal Dr
Anaheim, CA 92807**

Website:

<http://www.q-see.com>

Customer Service:

Phone: 877-998-3440 x 538

Email: cs@dpsi-usa.com

Tech Support:

Phone: 877-998-3440 x 539

Email: ts@dpsi-usa.com

Fax:

714-998-3509

Rev 101207

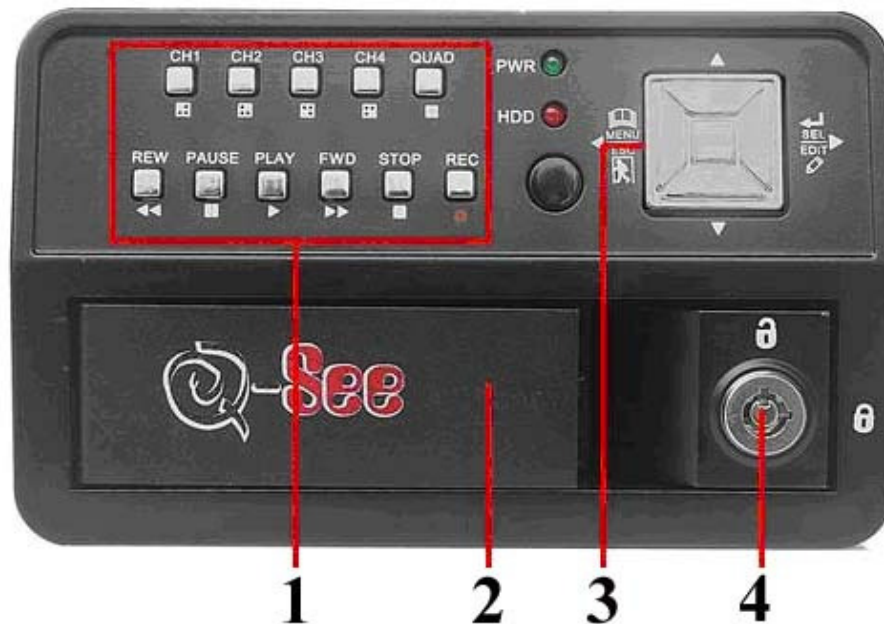
Table of Contents

1.	DVR Features	3
2.	Layout	3
2.1	Front Panel.....	3
2.2	Rear Panel.....	4
2.3	Remote Control.....	4
3.	Installation.....	5
3.1	Installing Hard Drive	5
3.2	Connecting Camera and TV Monitor.....	6
3.3	Connecting Power Supply.....	6
4.	System Boot	6
4.1	Detecting Installed Hard Drive.....	6
4.2	Recovering Lost Data.....	7
4.3	Restore Recording Feature.....	7
4.4	Main Screen	7
5.	DVR Setup	8
5.1	Setup Menu.....	8
5.2	Camera Select.....	9
5.3	Record Select	9
5.4	Record Mode.....	9
5.5	Recording Frame Rate.....	10
5.6	Recording Quality	10
5.7	Schedule Set.....	11
5.8	Sub Menu - Auto Record	11
5.9	Sub Menu - Password Enable	11
5.10	Sub Menu - Password Change	12
5.11	Sub Menu - Color Set.....	12
5.12	Sub Menu - Time Set	13
5.13	Hard Disk Setup.....	13
5.14	Motion Setup.....	14
5.15	NTSC/PAL Output Selection	15
5.16	Factory Reset.....	15
6.	Recording	16
6.1	Start Recording	16
6.2	Stop Recording	16
6.3	Recording Time on Hard Drive	17
7.	Playback.....	17
8.	USB DVR Access.....	18
8.1	Program Installation	18
8.2	Program Buttons.....	19
9.	Specifications	22
10.	Appendix.....	24
10.1	System Connection Diagram	24
10.2	DVR Accessories (included).....	24
	Q-SEE Product Warranty	25

Chapter 1: DVR Features

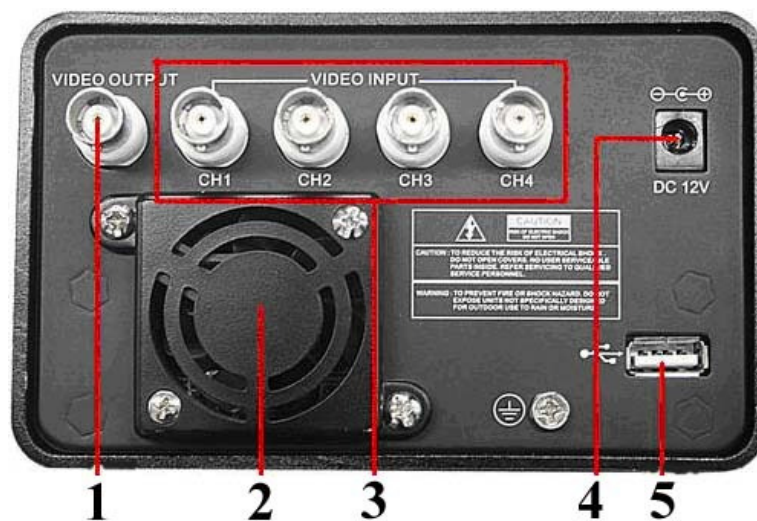
- 4 Channel BNC Camera Input.
- 1 Channel BNC Video Output.
- Video Source Option: NTSC / PAL.
- Motion Detection with Sensitivity and Area Settings.
- Time Schedule Recording / Motion Triggered Recording.
- One ATA-100 Hard Disk Interface.
- USB 2.0 Back up to computer.
- With Remote Control & Removable Hard Drive Tray.

Chapter 2: Layout - 2.1 Front Panel



1. FUNCTION KEYS
2. REMOVABLE HARD DRIVE TRAY
3. SELECTION / DIRECTION KEYS
4. HDD LOCK

Chapter 2: Layout - 2.2 Rear Panel



1. 1 X BNC VIDEO OUTPUT
2. FAN
3. 4 X BNC VIDEO INPUT
4. 12V DC POWER SUPPLY
5. USB 2.0 PORT

Chapter 2: Layout - 2.3 Remote Control



01. CH1	Select or enlarge CH1
02. CH2	Select or enlarge CH2
03. CH3	Select or enlarge CH3
04. CH4	Select or enlarge CH4
05. QUAD	Quad View
06. ◀◀	Rewind
07. ▶	Play recording list
08. ▶▶	Forward
09. ●	Record
10.	Pause
11. ■	Stop recording
13. MENU	Enter or exit setup menu
14. UP	Move up prompt
15. SEL/Edit	Modify item
16. DOWN	Move down prompt

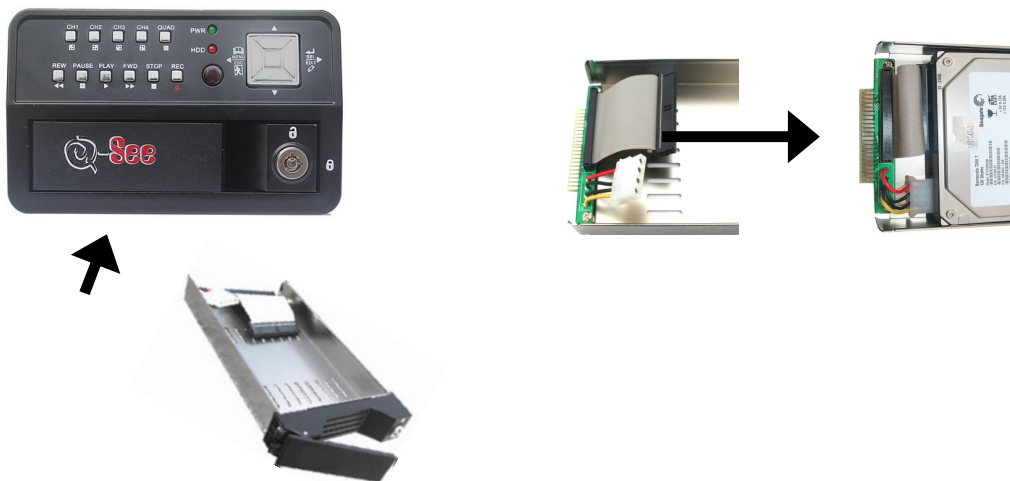
Chapter 3: Installation - 3.1 Installing Hard Drive

NOTE: This package comes with a 250GB hard drive. You would follow these instructions if you want or need to install a new hard drive.

1. Slide the HDD tray out of DVR body carefully.
2. Connect the power cord and data cable to hard disk drive carefully.
3. Insert the HDD tray into DVR body.
4. Lock the HDD tray.

Make sure the HDD is set as MASTER.

CAUTION: Do not remove the cartridge while the DVR is on!



CAUTION: The wedge at the end of the cartridge handle must be fully inserted into the compartment; otherwise the cartridge will not be able to insert into the DVR firmly, it could also cause damage by scraping the body of the DVR.



Chapter 3: Installation - 3.2 Connecting Cameras and TV Monitor

There are 4 camera inputs and 1 video output with BNC connectors (Refer to Chapter 2: Layout-2.2 Rear Panel).

1. Connect the camera cables from the camera to the 4 Video Inputs on the DVR.
2. Connect the 4 power feeds for the cameras to the power connectors on the cable near the video ports of the DVR, connect the other end to the power supply and plug the power supply into a surge protector.
3. Using the included RCA to BNC cable, connect the yellow RCA connector from the cable to the RCA video in port on the TV, connect the silver BNC connector on the other end of the cable to the BNC video out port on the back of the DVR.

NOTE: Refer to Chapter 10: Appendix-10.1 System Connection Diagram

Chapter 3: Installation - 3.3 Connecting Power Supply



**Please only use the power adapter supplied with the DVR.
Connect the power cord to a surge protector or Uninterruptible
Power Supply.**

Chapter 4: System Boot - 4.1 Detecting Installed Hard Drive

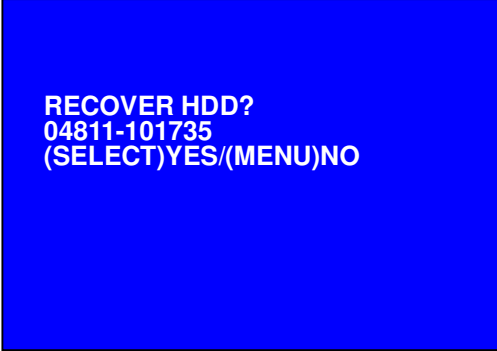
Checking HDD
MASTER...

After connecting the power, the system will boot-up and detect the installed hard drive.

On the Monitor it will show the hard drive information.

Please refer to the hard drive manual to configure hard drive as Master.

Chapter 4: System Boot - 4.2 Recovering Lost Data



RECOVER HDD?
04811-101735
(SELECT)YES/(MENU)NO

The system will automatically recover lost data.

A Power Error can cause data to be lost.

Chapter 4: System Boot - 4.3 Restore Recording Feature



Power Error Detected
Restore Hard Disk (Master) OK
Restore REC Mode..... OK

If a Power Error occurs during recording process, the system will automatically resume recording after power is restored.

Chapter 4: System Boot - 4.4 Main Screen



While the DVR is running, the monitor will display the view from the cameras as well as the following:

Upper left: Percentage of hard drive space used.

Middle: Channel name (CH 1 through CH 4).

Bottom right: Date and Time.

Bottom left: Mode, Status, Hard Drive Info, and Schedule Setting of the DVR.

Refer to **6.1 Start Recording**

Chapter 5: DVR Setup - 5.1 Setup Menu

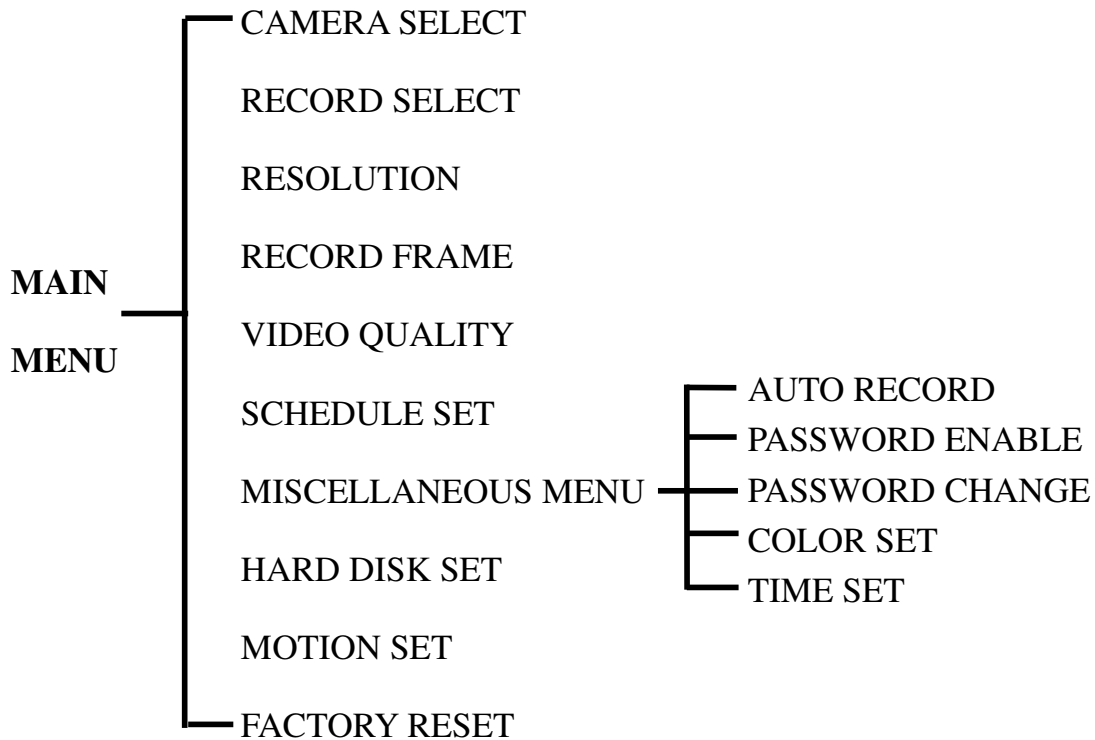


Press [Menu] to enter the setup menu;

Use [Up] and [Down] to select item;

Press [Select] to modify settings and [Menu] to exit.

Menu Directory



Chapter 5: DVR Setup - 5.2 Camera Select



The DVR system can display 4 camera feeds in one picture (Quad Mode).

Users can configure which camera is displayed.

Press [**←** Select] to modify setting and press [**▣** CH1], [**▣** CH2], [**▣** CH3], [**▣** CH4] to set each channel separately.

If the channel is disabled, the system will display “OFF” on the monitor.

Chapter 5: DVR Setup - 5.3 Record Select

Configure which channels are allowed to record.

Note: If no channels are selected, an error message will appear briefly on the screen when record is selected.

Chapter 5: DVR Setup - 5.4 Record Mode

There are two modes of resolution for video recording:

1. Each Mode: The DVR compresses and records each video channel separately so the user can enlarge a single channel to full screen display and still be recording on all channels. You can also record on specific channels, for example, user can turn off the record function of CH1 and CH2 and then the system will only record video on CH3 and CH4.

Press [**▣** CH1], [**▣** CH2], [**▣** CH3], [**▣** CH4] to switch between channels when playing back recorded video.

In Each Mode user can use the Loop Function.

Loop Function: When the system is in Live mode or Recording mode, press the

[QUAD] button and hold for three (3) seconds to make each video channel enlarge to full screen.

The full screen will be displayed for three (3) seconds, including Quad view.

The Loop Function will continue until any button is pushed.

For example, [Stop] will stop the Loop function and may stop the recording depending on Record Schedule Settings.

2. Quad Mode: The DVR will compress and record all 4 video channels into one file, therefore user cannot enlarge a single channel to full screen in play back mode.

User can not use the video Loop Function in this mode.

Chapter 5: DVR Setup - 5.5 Recording Frame Rate

Recording frame rate will affect the movement of objects in recorded video. More frames per second gives smoother movement and uses more hard disk space.

System default value is 30fps (frames per second) for NTSC (PAL is 25fps), which means the system will record 30 frames per second shared by all cameras. User can set frame rate for NTSC to 30,15,10,7,5,4,3,2,1 frames per second (PAL is 25,12,8,6,4,3,2,1)

Chapter 5: DVR Setup - 5.6 Recording Quality

There are three levels of recording quality, High, Normal, and Low.

Higher quality uses more hard drive space.

Record frame rate, record quality and available hard drive space will affect the total recording time of the DVR system.

Chapter 5: DVR Setup - 5.7 Schedule Set

User can setup video recording method by Time, Motion Triggered and Continuous Recording.



“-” No Recording.

“T” Continuous (System Default).

“A” Motion Triggered.

[▲] Up / [▼]Down: To move the prompt.

[↵] Select: To select Method.

Numbers along bottom are hours of the day

Chapter 5: DVR Setup - 5.8 Sub Menu-Auto Record

When the function is set to be “ON”, DVR will be awaked to record automatically by schedule if DVR is without any manual operations in five minutes.

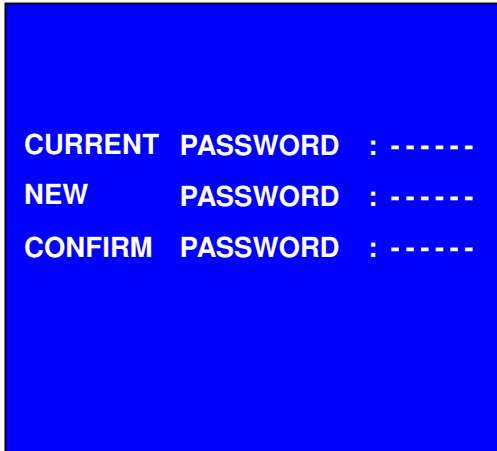
When you choose “OFF”, DVR will not record until you press the [RECORD] button.

Chapter 5: DVR Setup - 5.9 Sub Menu-Password Enable

When this option is set to be “ON”, you will be required to enter the password if you want to stop recording or enter menus.

Chapter 5: DVR Setup - 5.10 Sub Menu-Password Change

System default password: Press [CH1] button six times.



User needs to enter six characters for the password.

All keys can be used as password key **except** the [Menu] key, which is used to exit.

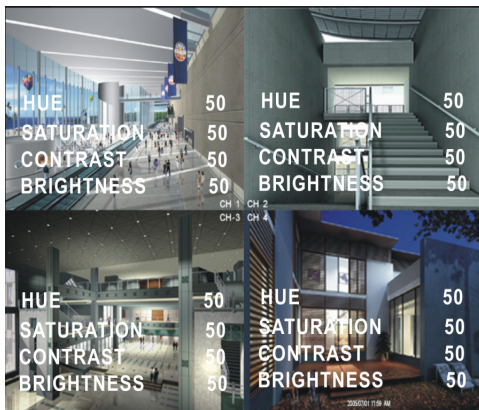
Note: To Reset the DVR.

Press the [Pause] button 10 times.

Resetting the DVR restores all values to system defaults and the DVR will reboot.

Afterward the default password is [CH1] button 6 times.

Chapter 5: DVR Setup - 5.11 Sub Menu-Color Set



“HUE”: 0-99.

“SATURATION” : 0-99.

“CONTRAST” : 0-99.

“BRIGHTNESS” : 0-99.

Button function :

[^Up] [vDown]: moves the prompt.

[REW]: Increase Value.

[FWD]: Reduce Value.

[CH1-CH4, QUAD]: Select Channel.

[Menu]: exit.

Chapter 5: DVR Setup - 5.12 Sub Menu-Time Set



To configure the DVR's time:

Press [**▲** Up] and [**▼**Down] to move prompt.

Press [**↵** Select] to modify.

Press [**☰** Menu] to save and exit.

Chapter 5: DVR Setup - 5.13 Hard Disk Setup



OVERWRITE ENABLED:

If you choose YES, recording continues and overwrites previous recordings when the hard drive is full. If you choose NO, the recording process stops when the hard drive is full.

HDD SIZE: This shows the size of the hard drive installed in the DVR.

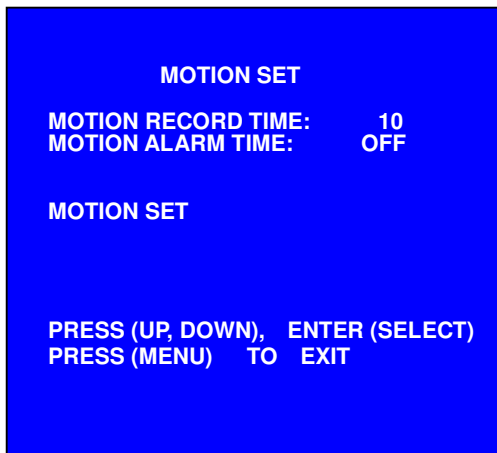
HDD USED: This shows the space used up on the master hard drive and the percentage of hard drive space being used.

HDD FORMAT:

If you format the hard drive, it will erase all the data on the hard drive.

Note: When you install a new hard drive in the DVR, please use this function to format the hard drive.

Chapter 5: DVR Setup - 5.14 Motion Setup



MOTION RECORD TIME:

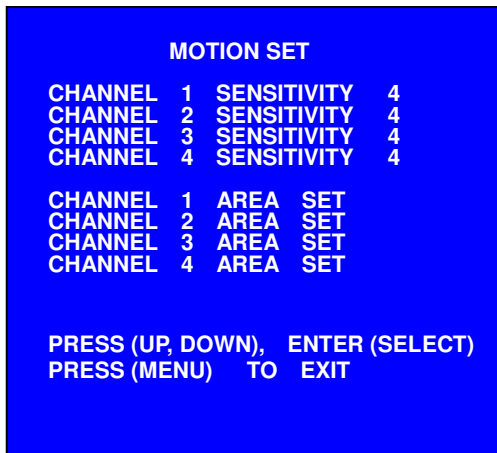
This number indicates how long the triggered recording lasts after the DVR has been triggered by motion.

MOTION ALARM TIME:

This number indicates how long the buzzer inside the DVR will sound when a motion event has been detected.

MOTION SET:

User needs to have video record method set to Motion Trigger. (Refer to **5.7 Schedule Set**)



CHANNEL SENSITIVITY:

Press [↵ Select] to adjust sensitivity of motion detection on each channel.

High (1-----9, OFF) Low

When it's OFF, the channel cannot be triggered by movement.

CHANNEL AREA SET:

Press “↵ Select” to enter the sensitive area of each camera. The picture of the selected channel is divided into 144(12*12) blocks, press [REW] to move left, press [FWD] to move right, press [UP] to move up, press [DOWN] to move down, press [↵ Select] to set the block to being active or not.

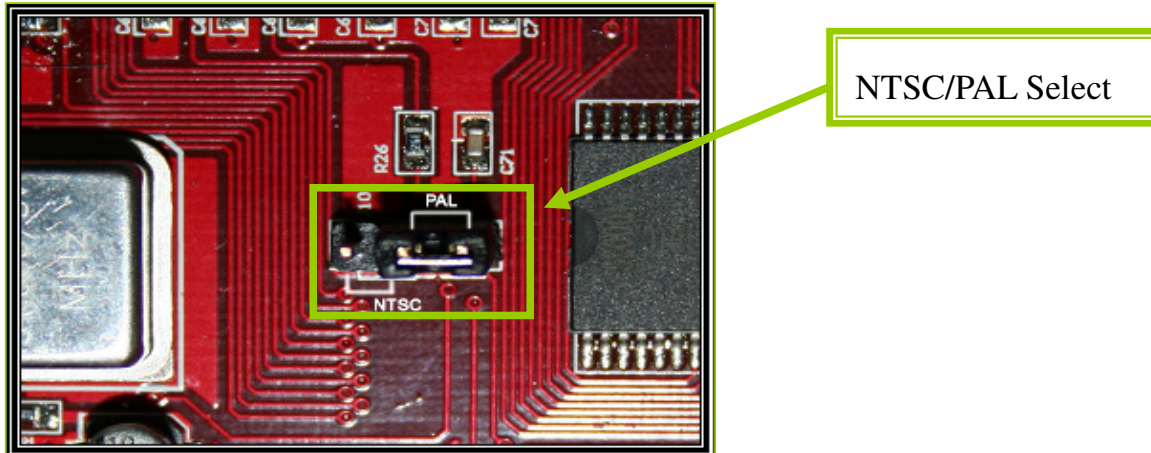
When the block is transparent, it's active to record. When the block is covered by shadow, it is not active, and motion in this area will NOT be recorded.

Make sure Record Schedule is set to Motion for the times required.

After completing the “MOTION SETUP”, User can exit by clicking [Menu], and press [Record] to start Motion Recording.

Chapter 5: DVR Setup - 5.15 NTSC/PAL Output Selection

Change the J10 jumper on the system board to select NTSC or PAL video output as marked on the silkscreen of the system board.



Chapter 5: DVR Setup - 5.16 Factory Reset

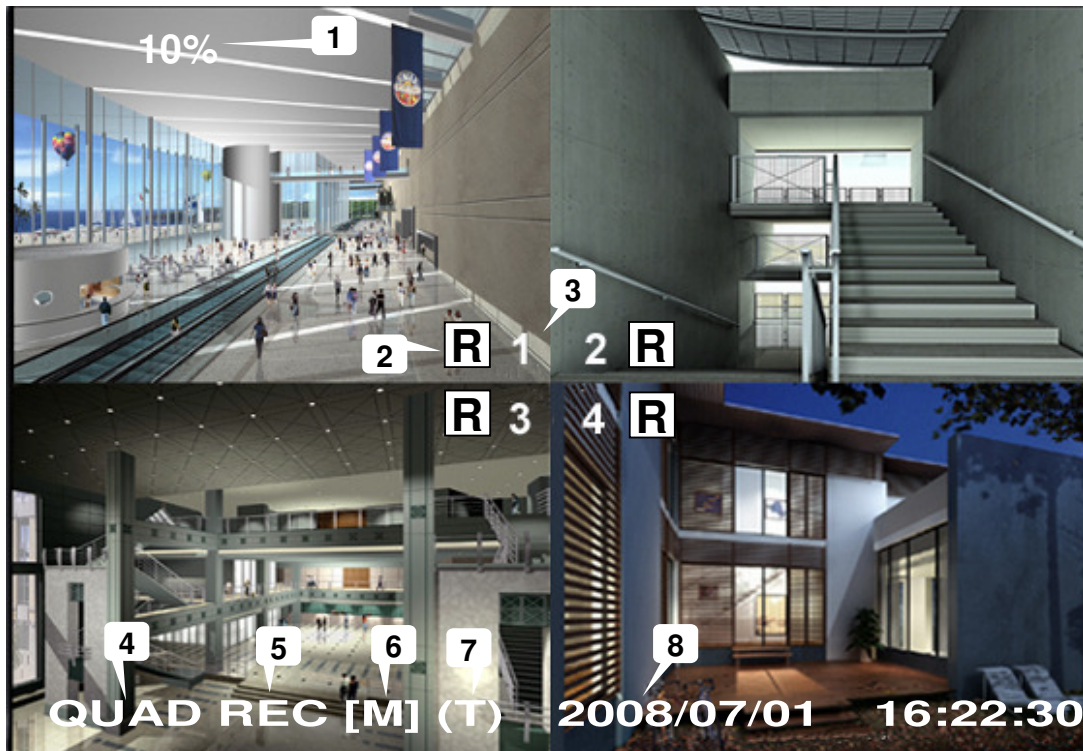
Press the [← SEL] Button to reload factory defaults, then the DVR will reboot, all custom settings (including password) will be restored to default.

There is no confirming dialog box for this selection after you press [← SEL] button, the system will just reboot!

Chapter 6: Recording - 6.1 Start Recording

Press [**Record**] to start recording (As set in **5.7 Schedule Set**).
System will display information on Screen.

NOTE: Only EACH Mode can enlarge single channel to full screen display.



1. Hard Drive Usage (Displayed as a percentage)
2. Recording Symbol (channel is currently recording)
3. Channel Name
4. Mode (QUAD or EACH)
5. Status (REC, Play, FF1, FF2, FF3, REW, PAUSE)
6. HD Info. ([M] Master Hard disk)
7. Schedule settings: (T) Continuous (A) Motion (-) No Recording
8. The time and date on the DVR

Chapter 6: Recording - 6.2 Stop Recording

Press [**Stop**] and system will prompt you to input password if you have already activated the password. If password option is disabled [**Stop**] will not stop recording.

Chapter 6: Recording - 6.3 Recording Time on Hard Drive

Estimated record time based on a 120GB Hard Drive (Quad Mode) Unit: Hour

System	Quality	Frame Rate	25	12	6	1
PAL	HIGH	20	70	146	291	1748
	NORMAL	15	93	194	388	2330
	LOW	12	117	243	485	2913

System	Quality	Frame Rate	30	15	7	1
NTSC	HIGH	20	58	117	251	1748
	NORMAL	15	78	155	332	2330
	LOW	12	97	194	416	2913

Estimated record time based on a 120GB Hard Drive (Quad Mode) in hours:

$$\begin{aligned}
 &120 \text{ (G Byte)} \times 1024 \text{ (M Byte)} \times 1024 \text{ (K Byte)} \\
 &\quad \text{Divided by:} \\
 &15 \text{ (K Byte/frame)} \times 7 \text{ (frame/sec.)} \times 60 \text{ (sec.)} \times 60 \text{ (min.)}
 \end{aligned}$$

Estimated time would be 332 Hours

Chapter 7: Playback

Press [▶ Play] to play the last recording.

Note: The DVR will play the last recording which has not been previously played until all recordings have been played.

“*” Marks un-played video recording.

During playback, press the [Menu] button to initiate the Time Search feature then the system will list all recorded video clips from the hard drive.

Newest video will at the top of the list, press [FF] to change the select mode and then press [▲ Up] and [▼ Down] to select start time or date to change.

Press [← Select] to edit time value.

Press [▶ Play] again to continue playing the video.


* 2008/01/08 08:30:32 --- 2008/01/08 16:00:05



1. Start Time.	2. End Time.
3. TIME: Continuous record.	4. MOTION: Motion Triggered event.
5. Un-played video recording.	


Chapter 8: USB DVR Access - 8.1 Program Installation

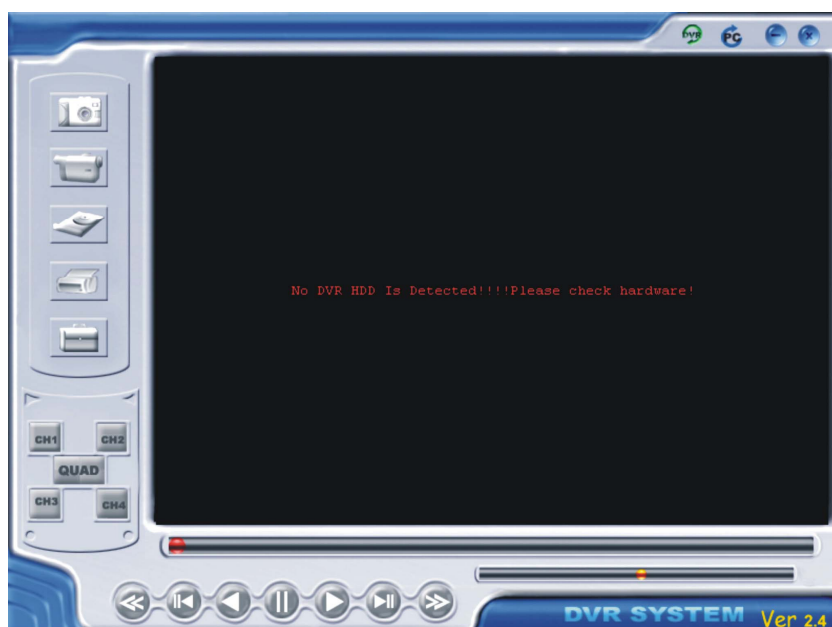
1. Put the USB Driver Program CD in your CD-ROM Drive.
2. Open CD directory.
3. Double click on "Set up".
4. Run the install DVR Viewer program.

To Run the program Double click the program icon [] on the desktop.

DVR Viewer will detect the hard drive automatically when user connects the USB cable to PC.

NOTICE: If the hard drive isn't detected, please restart and try the following:

- 1-Close the USB program window and remove the USB cable
- 2-Press [] then reconnect the USB cable to the PC and try again.



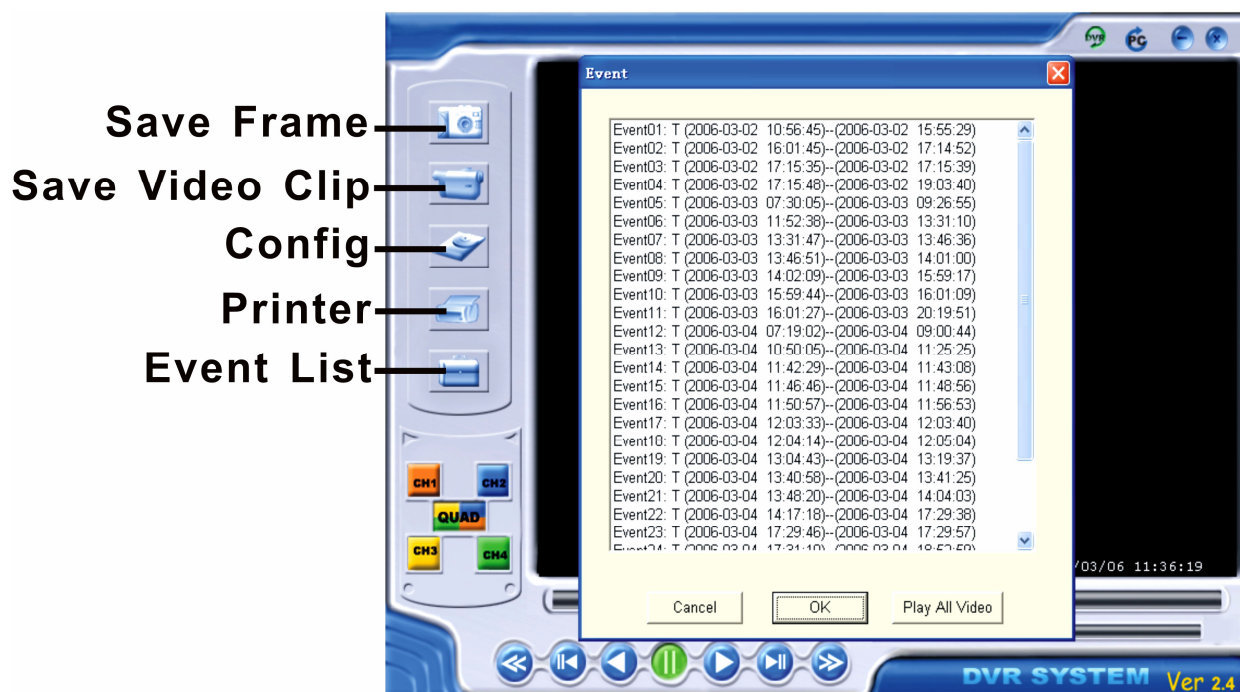
Chapter 8: USB DVR Access - 8.2 Program buttons



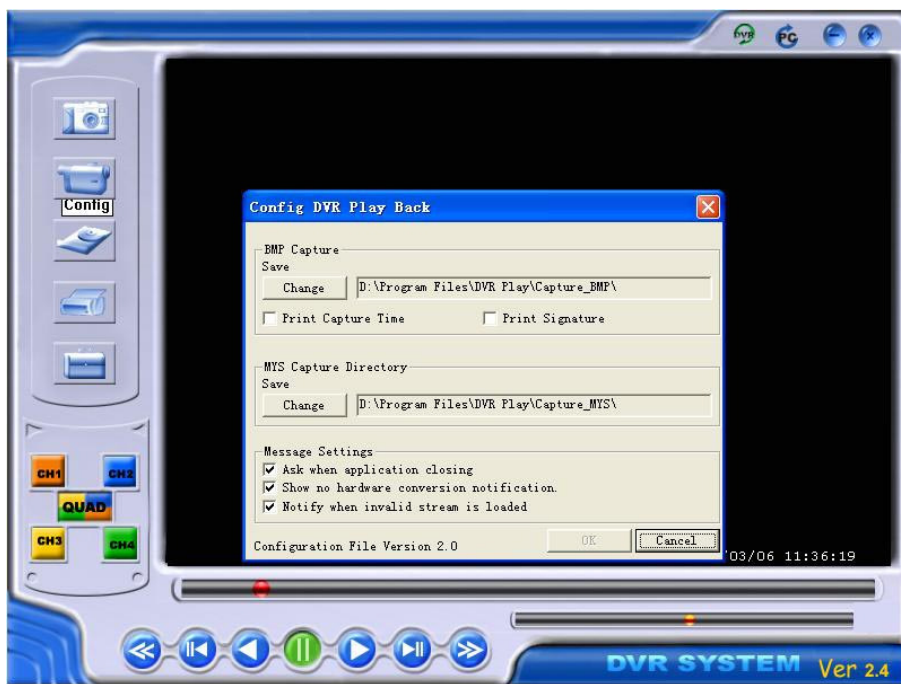
Q-See Q25DVR4ES User's Manual

1. DVR Event List	2. Capture one frame picture
3. Save DVR's Recorded Video to PC	4. Configuration
5. Load Video File Saved in PC	6. Play DVR Video File
7. Play PC Video File	8. Channel Selection Keys
9. Playing Scroll Bar	10. Fast backward
11. Previous Frame	12. Play Backward
13. Pause	14. Play
15. Next Frame	16. Fast Forward
17. Volume Scroll Bar (not used by this unit)	18. Exit

Press  to open the event video list.



Press  to configure the DVR play/record system.



Press  to print the picture of DVR's playback

Press  to play the video .



Chapter 9: Specifications

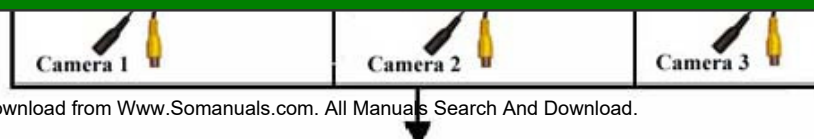
DVR Specifications

ITEM		DESCRIPTION	NOTE
Video Format		NTSC / PAL	
Operation System		None	STAND-ALONE
Camera Input Channel		4 channel Composite BNC	
Video Output Channel		1 channel Composite BNC	
Display Frame Rate	NTSC	120 frames/second	4 x 30 frames/second
	PAL	100 frames /second	4 x 25 frames/second
Recording Frame Rate (Quad)	NTSC	Max.30 fps (Quad)	Quad Mode
	PAL	Max.25 fps (Quad)	Quad Mode
Recording Frame Rate (Each Mode)	NTSC	Each Channel = 30 fps ÷ Number of Cameras	Max. 30 frames/s (Total)
	PAL	Each Channel = 25 fps ÷ Number of Cameras	Max. 25 frames/s (Total)
Record Mode		Continuous, Time Schedule, Motion Triggered.	
Resolution	Display	NTSC : 720 x 480 PAL : 720 x 576	
	Record	NTSC : 320 x 112, 640 x 224 PAL : 320 x 136, 640 x 272	Quad : 640 x 224 (total) Each : 640 x 224
Video Compression Format (Each Channel)		Modified Motion-JPEG (12-20K bytes/frame)	Low : 12K Byte Normal : 15K Byte High : 20K Byte
HDD Support		Up to 500GB	ATA -100 Interface
Estimated Record Length		120GB Hard drive @ 7 frames per second @ Normal Quality (120*1024*1024 K byte) ÷ (7*15*60*60) = 332 Hours	
USB		For PC playback & backup	USB 2.0
Remote Control		Included	
Search	Method	Time、Date、Event	
	Full Screen	YES	
Dimension (L x W x H)		12.25in * 5.25in * 3.25in	

Camera Specifications

ITEM	DESCRIPTION
Image Sensor	1/4" Color CMOS
Horizontal Resolution	380 TVL
Minimum Illuminance	1.5 Lux / F2.0
Lens	6mm
Power Supply	DC 12V
Power Consumption	50mA
Dimensions	46(W)×46(D)×107(H) mm
Weight	280g
Operation Temperature	-20℃ ~+55℃
Auto Gain Control	On / Off
Video Output	1.0 Vp-p 75 Ohm
Auto Iris	1 / 50 1 / 6000
S / N Ratio	>48 dB
Signal System	PAL / NTSC
Effective Pixels	PAL: 628×582
	NTSC: 510×492
Sensing Area	PAL: 5.78×4.19mm
	NTSC: 4.69×3.54mm
Gamma characteristics	0.45
Night-Vision Range	Up to 30Ft.
Cable length	60Ft.

Chapter 10: Appendix - 10.1 System Connection Diagram





Chapter 10: Appendix - 10.2 DVR Accessories (included)

Camera Cables (4 included)



USB 2.0 Cable



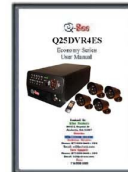
Software & USB Driver CD



Remote Control



User's Manual



Power Supply DVR & Cameras



Cameras (4 included)



DVR to TV Cable



250GB Hard Drive

Q-SEE Product Warranty

Q-See Q25DVR4ES User's Manual

Thank you for choosing our products.

All of our products users have a conditional free warranty repair service for hardware within 12 months starting from purchase date, and a free exchange service within one month (valid for manufacturing defects). Permanent upgrading service is provided for the software.

Liability Exclusions:

Any product malfunction, abnormalities in operation or damage caused by following reasons are not within the free service scope of our company. Please select payable service.

- (1) Equipment damage caused by improper operation
- (2) Improper environment and conditions in/on which the equipment operates, e.g., improper power, environment temperature, humidity and lightening strike etc. that cause equipment damage.
- (3) Damage caused by acts of nature: earthquake and fire etc.
- (4) Equipment damage caused by the maintenance of personnel not authorized by our company.
- (5) Product sold over 12 months ago.

In order to provide various services to you, please complete registration procedure after you purchase the product. Cut off or copy User's Information Card and fax or mail it to us after the card is filled in. You can also register the product by going to the www.q-see.com website and clicking on the Register link.

Customer Information Card

User's Name	Mr./Mrs.
Company Name	
Postal Address	
Postal code	
Phone Number	
E-mail	
Model Number of Product	
Serial Number of Product	
Purchase Date	
Distributor	

Free Manuals Download Website

<http://myh66.com>

<http://usermanuals.us>

<http://www.somanuals.com>

<http://www.4manuals.cc>

<http://www.manual-lib.com>

<http://www.404manual.com>

<http://www.luxmanual.com>

<http://aubethermostatmanual.com>

Golf course search by state

<http://golfingnear.com>

Email search by domain

<http://emailbydomain.com>

Auto manuals search

<http://auto.somanuals.com>

TV manuals search

<http://tv.somanuals.com>