



Remote Internet Monitoring Quick Start Guide

For H.264 Network DVR Models:

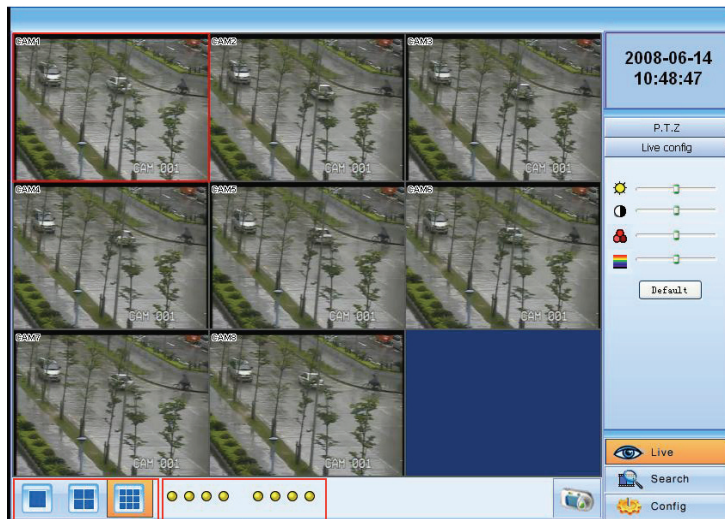
QSD2308L QSD2316L

QSTD2408 QSTD2416

1 Set Up

2 Connect

3 Enjoy



1 Set Up

There are four ways you can setup the DVR to be accessed remotely:

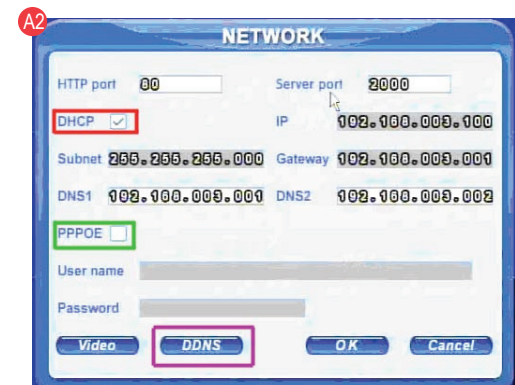
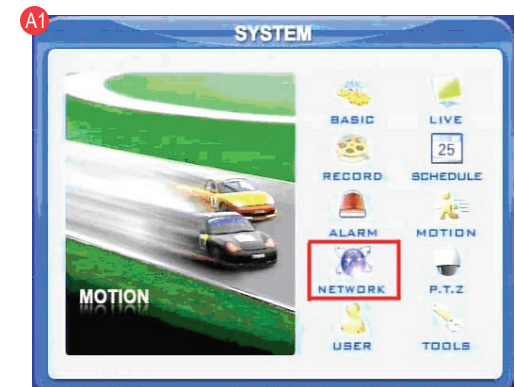
1) DHCP, 2) Static IP, 3) PPOE, and 4) DDNS

A Remote Monitoring Set Up for DVR using DHCP to setup IP address

To access the DVR from a computer that is using the same router as the DVR, set up the network settings using either the DHCP option or assigning a static IP address:

To Setup DHCP (Most common routers are DHCP)

Push the MENU key on the DVR front panel to display the system menu (A1). Use the direction keys on the DVR front panel to select the NETWORK OPTION and push Enter to display (A2). Select DHCP option by putting a check mark in the option box (Red Box A2), select OK, then restart the DVR so the router can find it and assign the IP address. This is the IP address you will forward Port 80 on the router to access the DVR from remote computers. Once DHCP is setup, disregard the default address, subnet and gateway information that displays in the main network window. To get the IP address that was assigned by DHCP use the info option on the remote or mouse menu and go to the network settings. Note the settings, go to the Network Box (A2). Remove the check mark from DHCP and enter the new settings so the router does not change them later.



B Remote Monitoring Set Up for DVR using a Static IP address

Setup the network configuration on the DVR to work with the settings on the router.
Static IP: To obtain the router settings, go to the Run Option on a computer that is attached to the same router as the DVR and type "cmd". Select OK to bring up the command prompt screen, as shown in the picture below. Type "ipconfig" at the prompt to access the router settings. Capture the Gateway and Subnet Mask Numbers (see green arrows below). On the DVR push the Menu Key to prompt the Main Menu, use the Direction Keys to select the Network option and push Enter to display the Network Screen. Select the IP Config option and select Enter to display the IP Config Window.

```
Administrator C:\Windows\system32\cmd.exe
Microsoft Windows [Version 6.0.6001]
Copyright (c) 2006 Microsoft Corporation. All rights reserved.

C:\Users\Rod> ipconfig

Windows IP Configuration

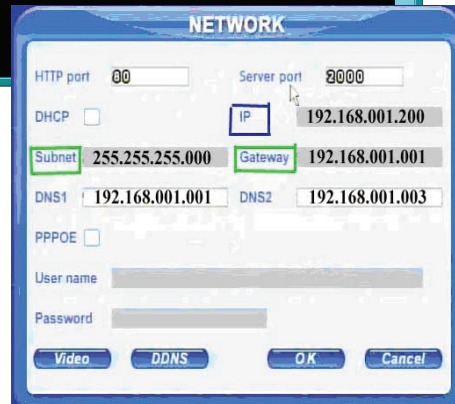
Ethernet adapter Local Area Connection:

    Connection-specific DNS Suffix  . : dps.local
    Link-local IPv6 Address . . . . . : fe80::e822:7476:52e7:8c3c%8
    IPv4 Address. . . . . : 192.168.1.131
    Subnet Mask . . . . . : 255.255.255.0
    Default Gateway . . . . . : 192.168.1.1

Tunnel adapter Local Area Connection* 6:

    Media State . . . . . : Media disconnected
    Connection-specific DNS Suffix  . : dps.local

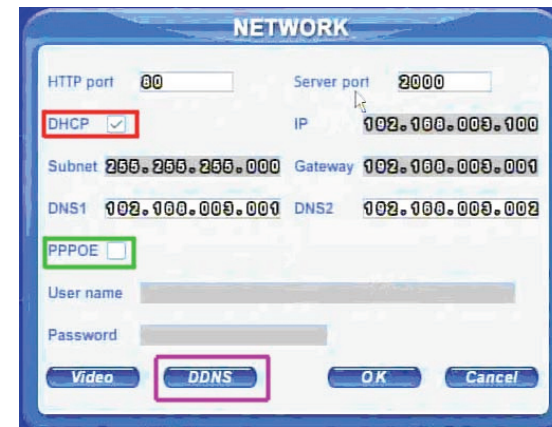
C:\Users\Rod>
```



From the Main Menu use the Direction Keys on the front panel DVR to select the NETWORK option and push the ENTER key to display the NETWORK screen shown. Enter the addresses from IP CONFIG (Green Arrows) in the same heading in the Network Screen (Green Boxes) use your computer's IP address (Blue Arrow) to determine the IP address of the DVR. Use the same first 3 sets of numbers as the computer. For the last set of numbers if the last computer number is one or two digits you can use any 3 digit number. If the computer's fourth number is in the one hundreds use 200 as the fourth number.

C Attaching the DVR directly to DSL/Cable modem

PPPOE: Select the PPPOE option in the NETWORK options. Put a check mark in the PPPOE option box (Green Box) using the ENTER Key and select OK.



Enter your username and password for your internet access account. If you do not have this information, please contact your Internet Service Provider.

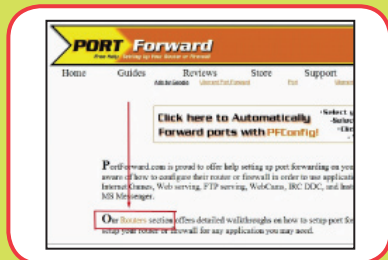
2 Connect

A Port Forwarding

To access the DVR from a remote computer over the internet via internet browser (Internet Explorer).

1 Forward Port 80 and Port 2000 on the router attached to the DVR, to the IP address of the DVR. *If you can't use HTTP Port 80 or 2000 due to use or your Internet Service Provider, use a different port in the same range. When selecting a different port, forward the IP address of the router to the new port and change the settings in the DVR Network settings. You will also need to add the new port to the end of the IP address in the browser window. For example, if you use port 83, you add :83 to the end of the IP address.

2 For instructions on the most popular routers go to www.portforward.com Click on the orange "Routers" link in the second paragraph, select your router from the list of router manufacturers, by clicking on the brand and model number this will open a new window.



3 Click on the orange "Default Guide" link to view port forwarding instructions for your router.



4 When you access the DVR from a computer attached to same router you use the IP address of the DVR when you access the DVR. From a remote computer you need to enter the public IP address of the router the DVR is attached to. You can get this by going to www.myipaddress.com on a computer that is attached to the same router as the DVR.



B Accessing the DVR through DDNS

You can access the DVR through a static or dynamic IP address; however a dynamic address can change, how often depends on your service provider. When it changes you need to go to a website such as www.myipaddress.com from a computer attached to the same router as the DVR to find out what the new IP address is. There are two solutions to this problem: 1) Obtain a permanent static IP address from your service provider, 2) Use a dynamic domain name service to get a domain name that can be linked to your dynamic IP address. We recommend www.dns2p.com or www.88IP.net, because they support this DVR. To access the DVR through a dynamic domain name you push the MENU key on the DVR to get to the system menu (A1), use Direction Keys on the DVR to select the NETWORK option and push the ENTER key to display the NETWORK screen shown in (A2). Select the DDNS button (PURPLE box A2) and hit ENTER key.

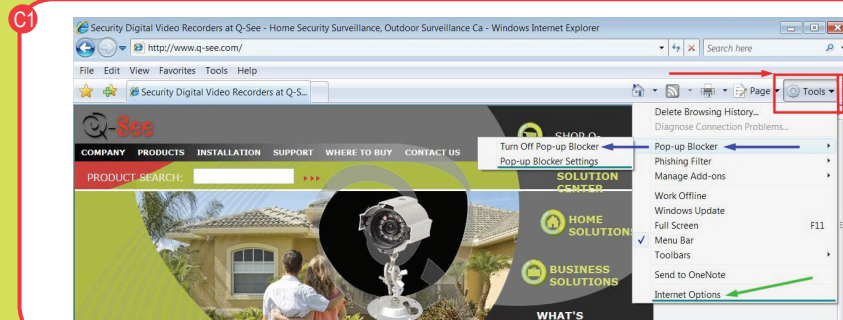
This will display this screen where you can enter the domain name you registered with the domain name service and the user name and password assigned. Also enter this information into the appropriate section on your router. You will be able to access the DVR remotely by entering the domain name into a browser window on a remote computer.



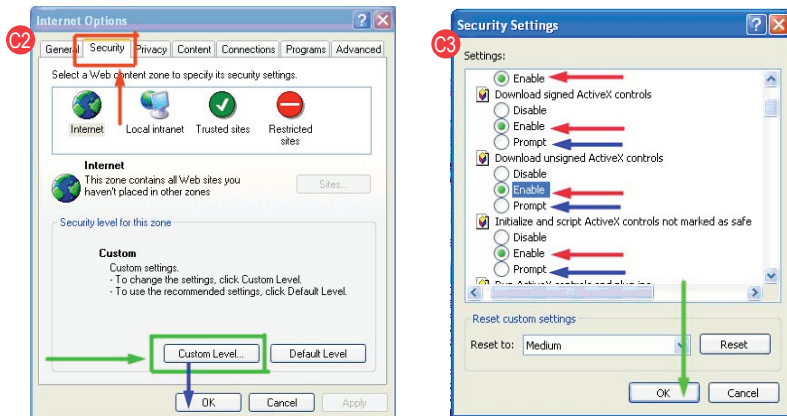
C Accessing the DVR through Internet Explorer Browser (IE):

Once the ports have been forwarded, you must modify your browser controls by allowing pop-ups. Go to Tools Option in Internet Explorer (Red Box below). Select the POP UP Blocker Option and turn off POP UP Blocker (Blue Arrows).

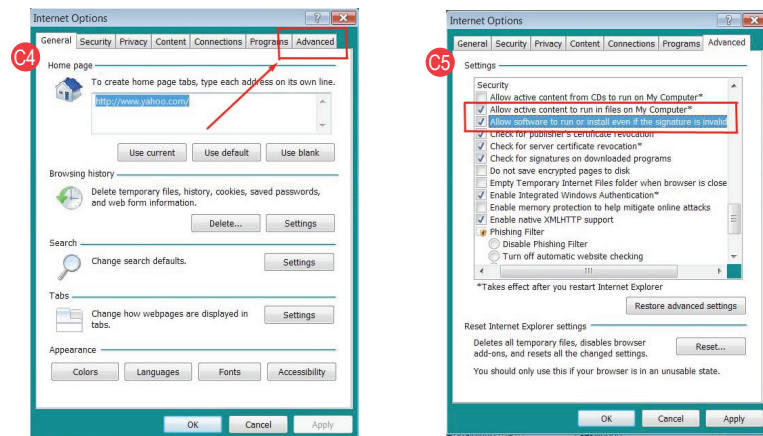
Enable the Active X Controls, go back up to the Tool Bar, and select Tools. Select from the drop down "Internet Options" (green arrow), prompting a new display window, shown on page 6 (C2).



Go to "Security" (Red Box C2), click on "Custom Level" (Green Box C2), click "OK". New window opens (C3), scroll down to Active X Controls and Plug Ins and set all to "Prompt" or "Enabled".



If you get an error message "Program Cannot Load" because the publisher is unknown or the program is unsigned, go to Internet Explorer, tools, internet options (C1) then click on the "Advanced" tab (Red Box C4). It will display window (C5). Scroll down to "Security", click on the options "Allow Software to Run or Install Even If the Signature is Invalid" and "Allow Active Content to Run Files on My Computer" (Red Box C5)

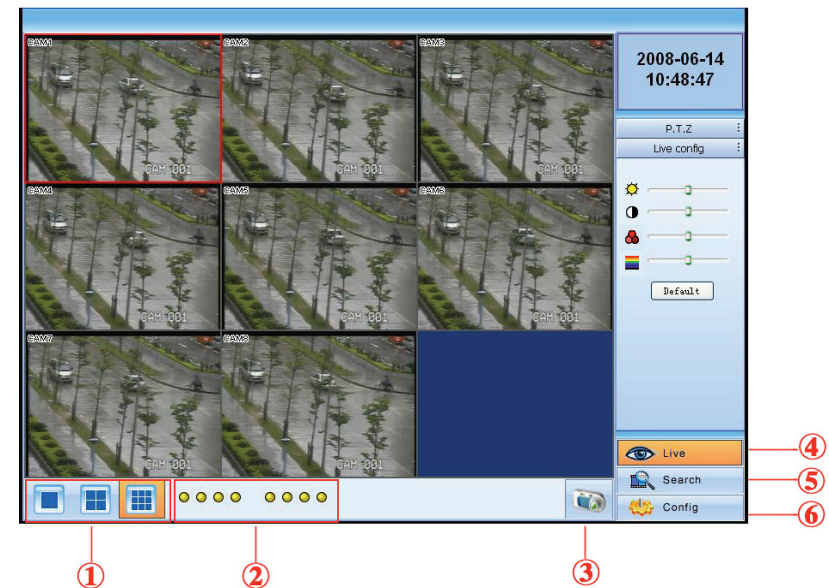


Trouble Shooting:

*Anti-virus programs, fire walls, and other plug ins could be blocking the Active X Control. Close them and try to connect. For more advanced instructions or for trouble-shooting, please consult the Q-SEE 2308-16 User Manual which came with your unit. Or download the manual from our support section at www.Q-See.com

Remote Viewing Window

Open an Internet Explorer Browser and type the address assigned by www.myipaddress.com into the address bar. When you connect you will see the remote viewing window below:



1. Full screen, 1/4/8 screen display mode.
 2. Camera indicators
 3. Picture snapshot
 4. Remote viewing: adjust the color of cameras and control PTZ
 5. Remote playback and backup: remotely playback and backup, check system log and journal
 6. Remote menu setup: setup the DVR configuration remotely
- 1., 5., and 6. are the function blocks, when one is active the button will show orange.

For more information on the features and how to use the remote viewing program refer to the 6.2 Remote Viewing starting on page 51 of the User's Manual.

3 Enjoy



Congratulations! You have just completed the Quick Start Guide for Remote Internet Monitoring.

If you require further assistance after reading the User Manual, please contact Technical Support:

On the Web: (24/7) Visit the Technical Support Section www.Q-See.com

By Phone: (Monday thru Friday, 9am-5pm (PST))
1 (877) 998 3440, ext 539

By Email:
ts@dpsi-usa.com

For more information about Q-See Products, please contact customer service:
1 (877) 998 3440, ext 538 (Monday thru Friday, 9am-5pm)
or view our selection online at www.Q-See.com



CONGRATULATIONS

on your purchase!

This Q-See product has undergone extensive quality control. If you have any issues during the setup process, please contact our support department before returning the product.

We have your solution!

- 1) Need assistance setting up the remote monitoring feature with your Q-See DVR? Visit www.portforward.com/qsee
- 2) Visit our Q-See Support Section at www.Q-See.com for instant troubleshooting tips, FAQs, DVR firmware downloads, Live Chat and More.
- 3) Contact our Support Team:



On the Web: (24/7) Visit the Technical Support Section www.Q-See.com



By Phone (Monday thru Friday, 9am-5pm (PST))
Tech Support 1 (877) 998 3440, ext 539
Customer Service 1 (877) 998 3440 ext. 538



By Email:
ts@dpsi-usa.com



Digital Peripheral Solutions, Inc.
8015 East Crystal Drive,
Anaheim, CA 92807
www.Q-See.com

Free Manuals Download Website

<http://myh66.com>

<http://usermanuals.us>

<http://www.somanuals.com>

<http://www.4manuals.cc>

<http://www.manual-lib.com>

<http://www.404manual.com>

<http://www.luxmanual.com>

<http://aubethermostatmanual.com>

Golf course search by state

<http://golfingnear.com>

Email search by domain

<http://emailbydomain.com>

Auto manuals search

<http://auto.somanuals.com>

TV manuals search

<http://tv.somanuals.com>