

9L Active

User Manual

QUAD
the closest approach to the original sound

IMPORTANT SAFETY INFORMATION

| | | |
|--|--|---|
|  | CAUTION! RISK OF ELECTRIC SHOCK DO NOT OPEN |  |
| TO REDUCE THE RISK OF ELECTRIC SHOCK DO NOT REMOVE COVER (OR BACK) NO USER-REMOVEABLE PARTS INSIDE REFER SERVICING TO QUALIFIED PERSONNEL | | |
| AVERTISSEMENT: RISQUE DE CHOC ELECTRIQUE- NE PAS OUVRIR | | |



This symbol indicates that there are important operating and maintenance instructions in the literature accompanying this unit.



This symbol indicates that dangerous voltage constituting a risk of electric shock is present within this unit.

Read these instructions.

Keep these instructions.

Heed all warnings.

Follow all instructions.

Do not use this apparatus near water.

Clean only with dry cloth.

Do not block any ventilation openings.

Install in accordance with the manufacturer's instructions.

Do not install near any heat sources such as radiators, heat registers, stoves, or other apparatus (including amplifiers) that produce heat.

Do not defeat the safety purpose of the polarized or grounding

type plug. A polarized plug has two blades with one wider than the other. A grounding type plug has two blades and a third grounding prong. The wider blade or the third prong are provided for your safety. If the provided plug does not fit into your outlet, consult an electrician for replacement of the obsolete outlet.

Protect the power cord from being walked on or pinched, particularly at plugs, convenience receptacles, and the point where they exit from the apparatus.

Use only attachments/accessories specified by the manufacturer.



Use only with a cart, stand, tripod, bracket, or table specified by the manufacturer, or sold with the apparatus. When a cart is used, use caution when moving the cart/ apparatus combination to avoid injury from tip-over.

Unplug this apparatus during lightning storms or when unused for long periods of time.

Refer all servicing to qualified service personnel. Servicing is required when the apparatus has been damaged in any way, such as power-supply cord or plug is damaged, liquid has been spilled or objects have fallen into the apparatus, the apparatus has been exposed to rain or moisture, does not operate normally, or has been dropped.

Warning: To reduce the risk of fire or electrical shock, do not expose this product to rain or moisture. The product must not be exposed to dripping and splashing and no object filled with liquids such as a vase of flowers should be placed on the product.

No naked flame sources such as candles should be placed on the product.

Caution: Changes or modifications not expressly approved by the manufacturer could void the user's authority to operate this device.

Warning: The mains power switch for each loudspeaker is located on the rear panel. To permit free access to this switch, the apparatus must be located in an open area without any obstructions.

INTRODUCTION



The Quad 9L Active is a powerful, compact powered loudspeaker system with an impeccable build quality and a sonic presentation which belies its small size.

The loudspeakers may be connected to any audio source which has a line or headphone output. You can also connect the system to a computer or games console, via the digital USB input for an enhanced audio-visual experience.

A small, handy remote control allows you to control the system volume level and also switch between the USB and the analogue inputs thus avoiding the need to disconnect inputs when changing sources.

Please read these instructions fully before connecting and using your Quad 9L Active. The instructions will help you to install the equipment properly and get the maximum enjoyment from your new system.



**Before installing this product
read all these instructions!**

Before making any connections, switch all the units in your system off at the mains.

Set the volume control at minimum when you switch on your system or change sources, and turn the level up gradually.

DO NOT use the loudspeakers at extreme settings of volume or with excessive treble or bass boost.

DO NOT subject your loudspeakers to excessive cold, heat, humidity or sunlight.

DO NOT place heavy objects on top of loudspeakers

DO NOT dismantle the loudspeaker. There are no user serviceable parts inside it and you will void the warranty.

When running cables, route them away from areas where they may be a source of danger.

DO NOT run signal cables parallel to mains cables as they may pick up hum and interference.

PRELIMINARIES

UNPACKING YOUR LOUDSPEAKERS

After taking out the top packing piece, lift the loudspeakers and accessories from the carton. Remove all the protective bags. Do NOT lift the loudspeakers out using the bags.

The complete system contains:

- One master 9L active loudspeaker
- One slave 9L active loudspeaker
- Two 1.9 metre IEC power leads with mains plugs for your area
- One 1.5 metre USB type A cable
- One 0.5 metre cable - 3.5mm-3.5mm jack plug
- One 1.5 metre mono RCA cable.
- Remote Handset with battery

Check all items after unpacking. If any item is missing or damaged, immediately contact your Quad dealer. Retain the packaging. If you dispose of the packing, follow all recycling regulations in your area.

NOTE:

Always allow some slack in interconnecting cables - do not extend them fully or place them under strain.

The supplied RCA phono lead will enable you to position the 9L Active loudspeakers up to 1.2 metres apart allowing for some slack. If you wish to place the loudspeakers further apart (as, for instance, in the Stereo diagram on Page 6) you should purchase a new, longer, single Phono cable. Use good quality screened audio cable.

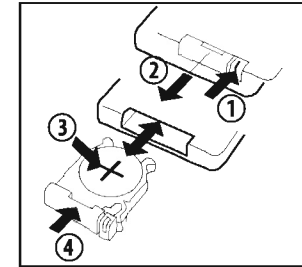
We do not recommend extending cables.

PREPARING THE REMOTE HANDSET

- Unpack the handset
- There is a small tab at the rear of the handset to protect the battery during transit. Remove this tab by gently pulling it out. The handset is now ready for operation.
- The handset uses a CR2025 battery. This will eventually run out and need replacement.

Replacing the handset battery.

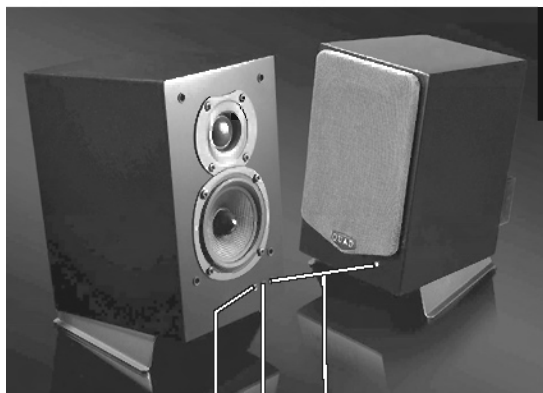
- Invert the handset
- Press the catch inward
- Slide the tray out
- Remove the old battery
- Replace with a new CR2025 battery
- Close the battery tray



Battery Cautions:

- There is a risk of fire and burns if the battery is handled improperly.
- Do not disassemble, crush, puncture, short external contacts, or dispose of in fire or water.
- Do not attempt to open or service the battery. Replace only with a CR2025 battery.
- Discard used batteries in accordance with recycling regulations in force in your area.

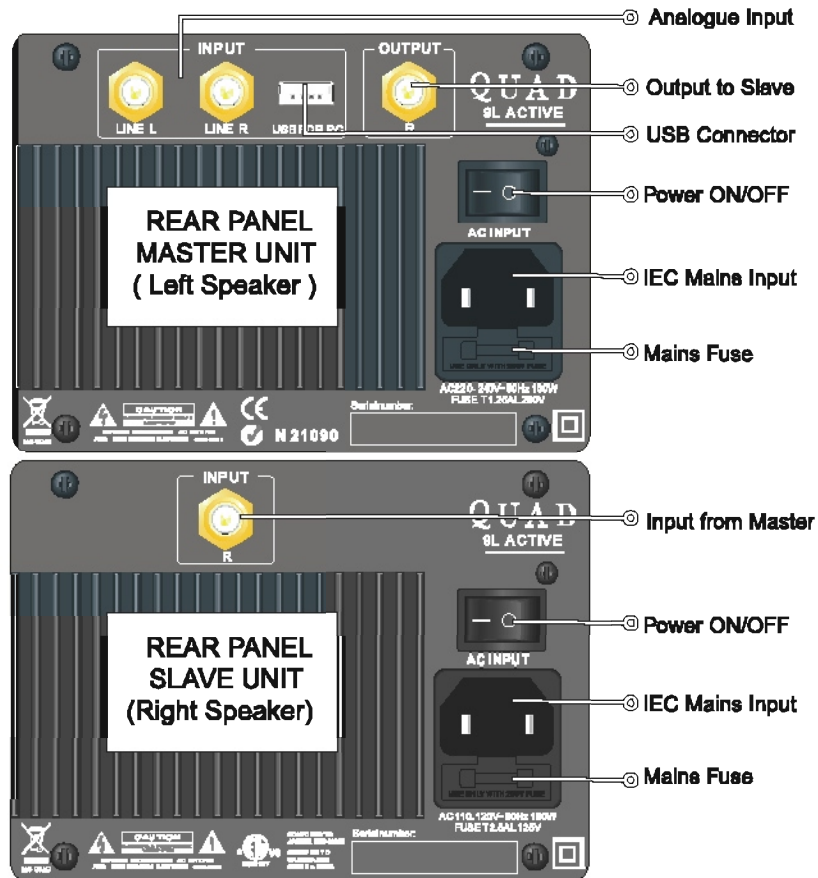
CONTROLS AND CONNECTORS



3.5mm Analogue Input
Connecting to this input automatically disconnects the rear Analogue inputs.

Pilot Light

Remote Sensor



POSITIONING YOUR LOUDSPEAKERS

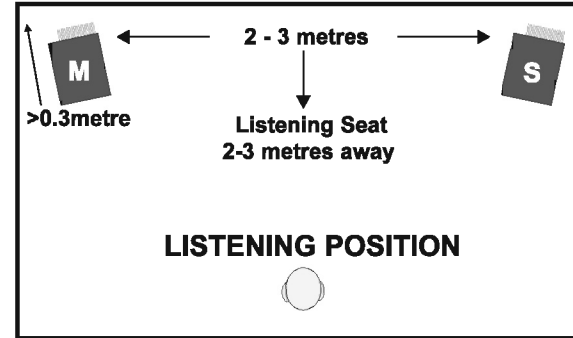
HI FI STEREO OPERATION

For standard Stereo applications the loudspeakers should be mounted on a stable surface such as a wall shelf or table 1–1.5 metres above the floor and 2– 3 metres apart, central to the listening position. For reliable remote operation there must be a clear line of sight between the listener and the master (Left) loudspeaker.

Optional table stands are available. They provide a stable support and angle the speakers up slightly for maximum dispersion.

Their bass extension depends on proximity to a wall, though they should be kept out of room corners and the finned amplifier heatsinks should be clear of the wall and away from any delicate wall coverings or fabrics.

Ideally the loudspeakers should be at ear level to a seated listener, though this may not always be possible. Facing the loudspeakers slightly inward will improve stereo imaging.



The Master Unit (M) MUST always be the Left Speaker!

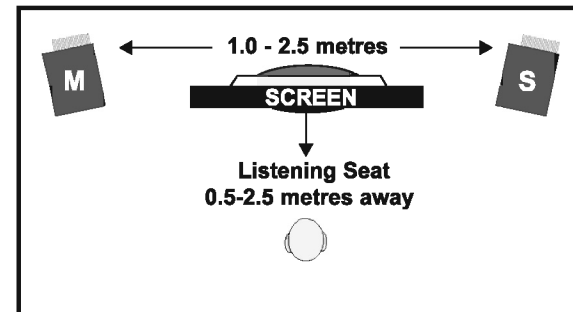
THE LOUDSPEAKERS AS NEAR-FIELD MONITORS

Place the loudspeakers on a stable surface such as a wall shelf or table where they are unlikely to be knocked over and central to the listening position. Ensure the finned amplifier heatsinks are clear of the wall and any other delicate surfaces. For reliable remote operation there must be a clear line of sight between the listener and the master (Left) loudspeaker.

If the loudspeakers cannot be placed at ear level to a seated listener. They may be angled a few degrees up or down as necessary.

The loudspeakers are screened so they may, if needed, be placed close to a standard CRT screen without any harmful effects.

If you are using the system with a game console, avoid placing the loudspeakers on the floor. Optional table stands are available. They provide a stable support and angle the speakers up slightly for maximum dispersion.

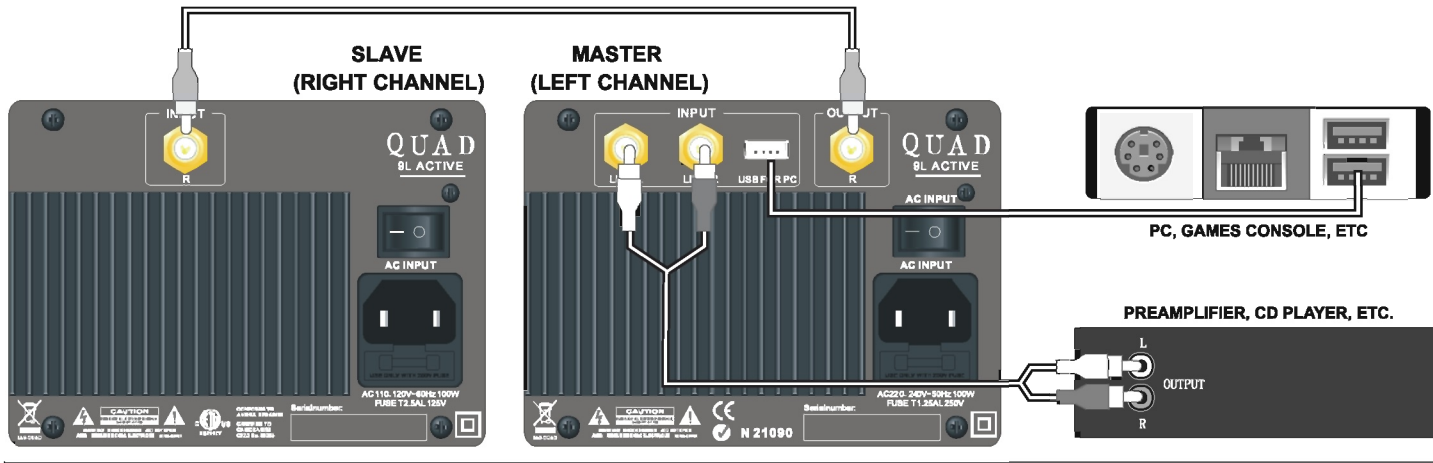


The Master Unit (M) MUST always be the Left Speaker!

The above are our recommendations. Be prepared to experiment until you have the setup that is right for you!

CONNECTING YOUR LOUDSPEAKERS

Always make connections with all system units switched off.



ANALOGUE INPUT & OUTPUT CONNECTIONS

You will need a screened RCA stereo interconnect (not supplied). Connect the Line Inputs of the 9L Active to a suitable line output on your source component. Ensure the Left and Right Channels are properly connected.

Connect the supplied RCA interconnect from the Output of the Master Unit to the Input of the Slave Unit.

An analogue 3.5mm connection via the front panel is also available

MAINS CONNECTIONS

Switch the ON/OFF switches on both units to the "O" (Off) position. Connect the supplied IEC power cords to separate mains points. Do not switch the power on at this time.

THE USB CONNECTION

Connect the supplied USB cable from the 9L Active to a spare USB input on your computer. The USB connection is for connection to a computer. Refer to the User manual for the device to determine suitability before connecting other devices to the 9L Active.

COMPATIBILITY

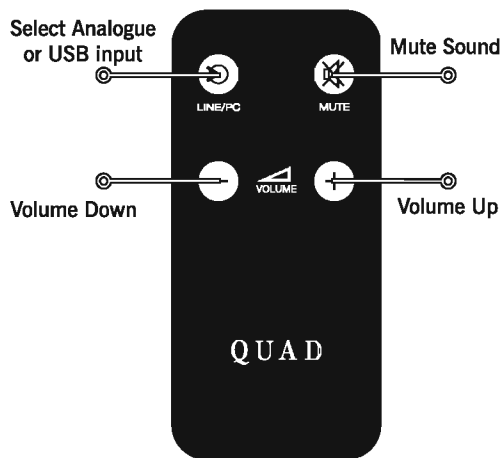
Windows Me/2000/XP/Vista; Mac OS 10.2 and later No driver downloads are necessary

Windows 98SE Depending on the peripherals in use on the PC you may need to download a driver before the PC will recognise the 9L Active.

To download the driver type this link into your web browser: <http://www.technical-assistance.co.uk/kb/usbmsd98.php>

In the window that opens click on: *Windows 98 Second Edition (4.10.2222)* Install the driver and reboot the system.

REMOTE CONTROL HANDSET



USING THE HANDSET

The handset is a very simple but essential tool for the proper operation of the 9L Active.

The only means of switching between digital and analogue sources and altering the volume is via the handset.

Additionally, we strongly recommend that you use the Mute function before changing between sources to prevent any unpleasant surprises!

OPERATION

ANALOGUE OPERATION

- Switch on the mains power.
- Switch the source component on.
- Switch the Mains ON/OFF Switch on the Master Unit to ON. Now switch the Slave Unit on. The power indicators will glow blue.

- Play some music.

If you are using a source, the output of which is controlled by the Volume Control (such as a headphone or preamplifier output), set the source component volume control initially to mid position.

- Use the volume buttons on the handset to control the level. You can also control the volume from the source component if you wish.
- If you change analogue inputs (i.e. plugging or unplugging the front 3.5mm jack connection) mute the speakers before you do this.
- Switch the loudspeakers and the source component off when you have finished.

DIGITAL OPERATION

- Switch on the computer and let it boot up.
- Switch on the mains power to both loudspeakers. The computer will recognise the 9L active and load the appropriate drivers.
- Set the volume on the computer control panel halfway and play some music via your chosen media player.
- If the loudspeakers do not come on press the LINE/PC key on the remote to activate them.
- Proceed as for analogue operation.
- When you have finished: Set the loudspeakers to mute before switching the computer off and/or disconnecting the USB cable.

FURTHER INFORMATION

LISTENING ON A PC

When listening to music on your PC while working, you can protect your speakers and your hearing from unexpected noises by disabling Windows "Sounds"

- Click **Start/Control Panel**.
- In the flyout box Click "**Sounds, Speech, and Audio Devices**"
- Follow the prompts and navigate to "**Sounds and Audio Devices Properties**".



- Select "**No Sounds**" from the options list
- Click **OK**. This disables all Windows sounds including the Startup theme. You can restore "Sounds" at any time.

- Always use the USB connection when listening to music on a computer. The digital signal is decoded in the 9L Active with a minimum of processing and the sound will almost certainly be far superior to the sound from the analogue outputs of your PC soundcard.

When the speakers are not in use, we suggest that you switch them off via the ON/OFF switches.

- When you have finished: Set the loudspeakers to mute before switching the computer off and/or disconnecting the USB cable.

TROUBLESHOOTING

If your 9L Active system is not working as well as you expect please refer to this checklist before contacting your dealer.

No Sound

- Check all connections. Check if the unit is properly connected and switched on.

Indistinct Sound

- Check all the connections. Make sure that the loudspeakers are correctly connected and the Left and Right Loudspeakers are correctly identified.

Distorted Sound

- The source unit is operating at too high a volume level. Turn down the volume at the source component and turn up the volume on the 9L Active.

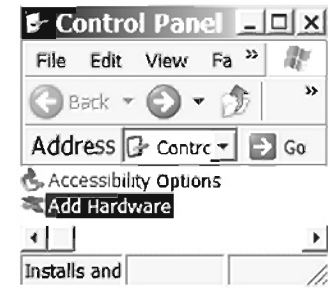
Only one channel plays

- Check the RCA connection between the loudspeakers.

My PC will not recognise the 9L Active in USB mode.

- Check all the connections. Switch the PC and both units on.
- Access **Control Panel** from the Start menu.
- Click on **Add Hardware**.

The PC will now detect the loudspeakers and load the appropriate drivers.



SPECIFICATIONS

System Performance

| | |
|--------------------------------------|--------------------------------|
| Frequency response (boundary) | 50Hz-21 kHz \pm 3dB |
| Short-term peak SPL | 105dB |
| Upper frequency limit | 32 kHz |
| Input impedance | 10k Ohms |
| Input sensitivity | 0.815V (0.44dBu) |
| Signal/noise ratio | 76.5 dB |
| Frequency fb | 60 Hz |
| Magnetic screening | Yes |
| Power amplifier output | 60WRMS |
| Mains voltage | 230V/110VAC (region dependent) |
| Power consumption | 10W idle; 75W max |

Passive Components

| | |
|--------------------------|----------|
| Woven Kevlar Bass | 4" 100mm |
| Soft Dome Tweeter | 1" 25mm |
| Crossover Network | 2.2 kHz |

Active Components

| | |
|-----------------------------------|---|
| Auto Standby | Yes |
| Mini System Remote Control | +/- volume, mute, source select (Line/PC) |

Physical Characteristics

| | |
|-----------------------------------|-------------------|
| Enclosure type | Ported |
| Product dimensions (HxWxD) | 248 x 152 x 237mm |
| Net weight | 4.4 kg |
| Gross weight | 10.4 kg |

WARRANTY AND SERVICE

WARRANTY

Quad equipment is warranted against any defect in material and workmanship for one year from the date of purchase (proof of purchase is required). We ask that you complete and return the enclosed Warranty Registration Form.

Within the guarantee period, Quad will undertake replacement of defective parts free of charge provided that the failure was not caused by misuse, accident or negligence. Your statutory rights within the territory in which you purchased the equipment are not affected by this guarantee.

There are no user replaceable or serviceable parts inside Quad units. Unauthorised attempts to service or modify Quad products will invalidate the warranty.

SERVICE ARRANGEMENTS

Equipment for servicing should be returned to the supplying dealer, or to the appointed service agents for your area. The addresses of main Service Agents are listed below. If you are abroad and there is no suitable dealer in your area, please contact the distributor for the country in which it was purchased or Quad Electroacoustics Ltd.

Equipment returned for service should use the original packing. Please enclose a brief note with your name and address and the reason for returning the unit.

AUTHORISED SERVICE CENTRES

UNITED KINGDOM:

International Audio Group, Unit 4, St Margaret's Way,
Stukeley Meadows Industrial Estate Huntingdon, Cambs, PE29 6EB
Tel: +44 (0)1480 447700 Fax: +44 (0)1480 431767

ASIA:

IAG, Sanecore Industrial Park, Jiuwei, Xixiang, Shenzhen, China 518102.
Tel: +86-755-82091200 Fax: +86-755-82091205

A worldwide distributor list is available on the QUAD website: www.quad-hifi.co.uk



QUAD

IAG House, Sovereign Court, Ermine Business Park, Huntingdon, Cambs, PE29 6XU,UK
Tel: +44(0)1480 447700 Fax: +44(0)1480 431767 <http://www.quad-hifi.co.uk>
IAG reserve the right to alter design and specification without notice. All rights reserved © IAG Group Ltd.
Quad is a member of the International Audio Group.

Free Manuals Download Website

<http://myh66.com>

<http://usermanuals.us>

<http://www.somanuals.com>

<http://www.4manuals.cc>

<http://www.manual-lib.com>

<http://www.404manual.com>

<http://www.luxmanual.com>

<http://aubethermostatmanual.com>

Golf course search by state

<http://golfingnear.com>

Email search by domain

<http://emailbydomain.com>

Auto manuals search

<http://auto.somanuals.com>

TV manuals search

<http://tv.somanuals.com>