



Intelligent USB Share Switch

USB-401/USB-401P

USB-201/USB-201P

USER'S MANUAL

Introduction

Thank you for purchasing the Intelligent USB Share switch. Intelligent USB Share Switch can save your COST, TIME, SPACE, EQUIPMENT and POWER.

Intelligent USB Share Switch allows multiple PCs to share one USB device. First come first serve. Each time, only one PC can use the USB device port. Intelligent USB Share Switch is accompanied with intelligent software, which located at icon tray, to manage the resources shared by multiple PCs. Each PC can view the USB device port situation in real time from the ICON and sent out the request message to the other PC for releasing the USB device port.

Normally, most of PCs have been built-in 2 to 4 USB down stream ports and each PC can easily has its own many private USB devices. But, it take a lot of cost on USB devices and the user might need a requirement to share your some of personal USB device without going through hot plug process. Intelligent USB Share switch can reduce your efforts on hot-plug USB device between PCs back and forth.

Features

- Four or two PCs share a USB printer or the other USB devices
- Works with Windows 98/SE/ME/2000/XP
- Conform to USB REV1.1 Specifications
- Run USB dual speed --- 12Mbps and 1.5Mbps
- Support UHCI and OHCI USB interface
- Supports USB self power for more USB Hub expansion
- Using intelligent software to switch USB device ports and easy operation
- Handle some HP, Epson USB printers and IEEE-1284 printers (Built-in IEEE-1284 port) under auto print mode
- Auto Printer mode supports First Come First Serve
- The cable length from PC to USB share box or USB share box to USB device is 5 meters
- Easy to share other expensive USB peripherals like USB to Wireless LAN adapter, USB to Bluetooth adapter, USB to IRDA adapter, USB docking station, USB Zip drive, USB card reader, USB to USB Bridge, USB to Ethernet or other USB adapters.
- Easy Extend USB down stream ports or add a 4 or 7 port USB Hub to USB share switch down stream port for more USB devices connected to your PC.

Package Contents

Model No.: USB-201	
2 Port USB Share Switch	1 PCS
User's manual	1 PCS
CD-ROM Software (or Software Diskette)	1 PCS

Model No.: USB-401	
4 Port USB Share Switch	1 PCS
User's manual	1 PCS
CD-ROM Software (or Software Diskette)	1 PCS

Model No.: USB-201P	
2 Port USB Share Switch with IEEE-1284 Printer Port	1 PCS
User's manual	1 PCS
CD-ROM Software (or Software Diskette)	1 PCS

Model No.: USB-401P	
4 Port USB Share Switch with IEEE-1284 Printer Port	1 PCS
User's manual	1 PCS
CD-ROM Software (or Software Diskette)	1 PCS

Technical Specifications

Model No.	USB-401	USB-401P	USB-201	USB-201P
PC Port	4	4	2	2
USB Device Port	1	1	1	1
IEEE-1284 Parallel Port	0	1	0	1
PC Port Connector	USB Type B Receptacle			
USB Device Port Connector	USB Type A Receptacle			
IEEE-1284 Port Connector	N/A	DB 25 pin	N/A	DB 25 pin
USB device selection	Software Manual Selection or Auto Selection			
PC Port LED	4	4	2	2
USB Device Port LED	1			
Cable Length (meters)	5			
USB Power	Bus Power			
Power Adapter	No			
Operation Temperature	0~40°C			
Storage Temperature	-20~60°C			
Emission	CE, FCC, C-TICK			
Humidity	0~80°C Non-condensing			
Enclosure	Plastic			
Dimension (mm)	119*84*27	125*84*27	84*65*27	125*84*27
Weight (g)	130g	160g	75g	150g

*Note: Auto selection mode is only for some of HP / EPSON USB and IEEE-1284 printers (Built-in IEEE-1284 Port). Please refer to software installation section.

System Requirements

Model No.	USB-401	USB-401P	USB-201	USB-201P
PC side	Four PCs with USB port Four USB A-B Cable		Two PCs with USB port Two USB A-B Cable	
USB Device side	One USB printer or USB device with its accompanied cable.	One USB printer or USB device or one IEEE-1284 printer with its accompanied cable	One USB printer or USB device with accompanied cable.	On USB printer or USB device or one IEEE-1284 printer with its accompanied cable

LED Indication

There are two kinds of LED on the cover:

1. PC port LED : If one of PC ports is connected to the Downstream port, the green LED is lit. There is only one PC port LED is lit each time. When none of PCs uses three USB type A ports, all of PC LEDs are off (It means that none of PCs occupies the Hub ports).
2. Device port LED : There is one LED to indicate the USB device is hooked to the PC.

Hardware Installation

Before installation, please make sure all of peripherals and computers have been turned off .

1. Power on PCs and boot Windows O.S. ready
2. Before you are going to PNP (Plug and Play) installation of USB share switch, please Study "software installation" section first. After you have studied and understood your Situation, you start connecting the USB A-B cable between PCs and Intelligent USB Share Switch. And then power on intelligent USB share switch.
3. Connect USB devices to the USB device port of Intelligent USB Share Switch.

Software Installation

Note: There is a printer test report file "Printer_rep.doc" locate at this CD-ROM or software diskette.

If you don't have a printer, please skip "a" , "b" procedure.

- a. Install your USB printer with your printer supplier's software driver first . (Select USB Mode installation procedures and test it)
- b. If your printer driver supports status monitor, "DISABLE" it now.
- c. Installing Intelligent USB Share Switch software driver
 1. Please insert the CD-ROM or software diskette into your CD-ROM drive or software diskette drive respectively.
 2. To connect Intelligent USB share switch to your PC
 3. This brings up the "add new hardware wizard" dialog, which searches USB share switch software drivers. Please click [NEXT] [NEXT] and assign the software driver path to CD-ROM drive or software diskette drive.
 4. At end of installation, selecting the available printer supplier on the list.

Note: If you use **manual Mode** or **do not have a printer**, please select **"Do Not Use Any Printer"** and then go to procedure "f" .

- d. Plug in your printer to "USB Share Switch" and Left click the "USB Share Switch" ICON to connect to printer.
- e. Reset the PC now.

Software Uninstallation

In general drivers should be unloaded using "control panel → ADD/REMOVE programs" .

1. Please click your mouse to follow up the procedures to remove the intelligent USB share switch software:
My Computer → Control Panel → Add/Remove programs, then select "USB Share Switch" to delete the software.
2. Reboot the computer.

Usage

When you would like to use USB device ports, using selection icon to switch PC port.

Icon Usage:

- A. Connect USB Share switch to PC
This brings up the add new hardware wizard (First connection), which searches USB Share switch software drivers. Please refer to software installation.
- B. After finishing installation, there is an icon exists at the right down corner. There are five kinds color of icon might exist in your PC:

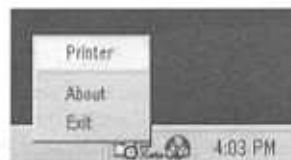
- a. USB device port free icon
 - b. Construction icon
 - c. On Line icon
 - d. Current PC occupies USB Devices icon
- Example: This icon means that computer 2 is using USB device port now.
- e. Missing USB Share Switch icon

There are three kind of menus when right clicking mouse:

1. About (Indicates Software version, Firmware version; and current PC ID No.)



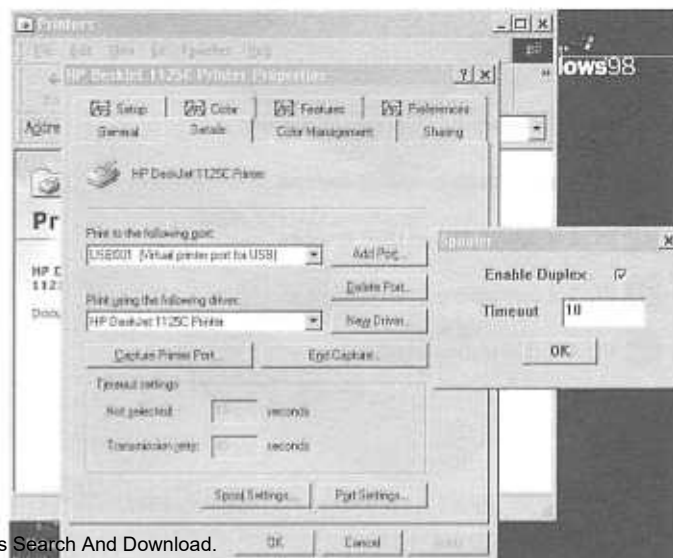
2. Exit (USB Share Icon exits from Icon Tray)
3. Printer Hook (Select) / Un-Hook (Deselect) printer driver type



There are two kind of modes for your selections. One is **Auto Mode** and the other is **manual mode**.

Note: Before select Auto mode, Please install your printer drivers first.

- a. Auto Mode :
Auto mode means that when you send a print job to the printer, Intelligent USB share switch will link printer device to your PC automatically. After the print job is sent to printer completely, Intelligent USB share will disconnect printer automatically from your PC and it is waiting for next print job from one of PCs. The auto disconnect timer depend on the printer's properties setting. Please right click printer icon → Details → port setting → Timeout. (Note: Timeout control is to make sure the print job is sent to the printer from printer buffer completely. The USB share switch will wait a period of time out time and then disconnect this PC port for waiting next coming print job. The factory default time out is 10 seconds. You can define yours time out value from 10 seconds to 998 seconds.)



There are some kinds of printer drivers (Epson USB Printer series, HP USB Printer series, IEEE-1284 Printer Series) exist in the pop up window. Please select your printer type and click o.k. to confirm it.



Note: IEEE-1284 Printers only for built-in IEEE-1284 port Mode

b. Manual Mode :

Manual Mode means that when you send a print job to the printer. You must click the ICON to link the PC and USB Share switch. After the print job sent to printer completely. The USB Share switch is continuous connected to the PC.

Note: If you select the manual mode you should select the "Do Not Use Any Printer"

I. USB Device Ports Free Icon:

All PCs show this icon indicates none of PCs occupies the USB device ports.



USB devices are ready for all PCs. To click left button to select USB device port. After finishing connection, the free icon will be changed to ON LINE ICON indicates USB device port is assigned to your PC and USB device will be hot plugged into your PC at the same time. Your PC will take a short time to get USB device driver.

II. Construction Icon:



Your PC now is occupying the USB device and this free icon will be changed to red color connection or green color connection back and forth during connection construction. After finishing construction, your PC will show this on line icon at your icon tray.

When you Moving the mouse cursor to this icon. It will show "Disconnect" selection. You can select "Disconnect" to release USB device port to the other PCs and the icon.



will get back to USB device port free icon or current PC occupies USB device icon (i.e. the other PC occupies the USB device port at the same time, when you release USB device port).

III. Current PC Occupies USB Devices icon:

- 1 PC 1 is connecting to USB devices
- 2 PC 2 is connecting to USB devices
- 3 PC 3 is connecting to USB devices
- 4 PC 4 is connecting to USB devices

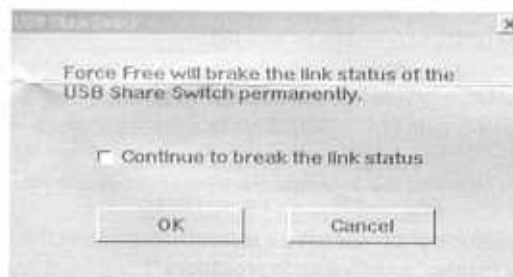
The USB device port is currently used by the other PC and the no. means that which PC is connected to USB device port now. If you would like to use USB device port, just move cursor to "current PC occupies USB devices icon" click the left button and select "Request" item. USB share switch will send request message to the on line PC and ask this PC to release USB device ports to you right away or remind this PC to release USB device port to you in short time.



When you move cursor to "current PC occupies USB devices icon" click the left button and select "Force Free" item. USB share switch will disconnect current occupied PC. So, Any PC can connect USB share switch again.

Note:

Force free will brake the link status of the USB share switch. Maybe destroy the communication data of device which connected to Intelligent USB share switch downstream port. You should be careful to use the function.



IV. Missing USB Share switch icon:

When the USB share switch is removed out from your PC or your PC is disconnected to this switch or the USB cable is lost, you will see a "Missing USB Share Switch" icon exists at icon tray. If you move the mouse cursor to this missing icon, it will indicate "Missing USB Share switch" message.

V. RESET button:

To press "RESET" button 2 seconds will reset USB Share Switch.

Troubleshooting

Ensure that all cables are well seated. Label all of cables with the number for each respective computer to avoid confusion.

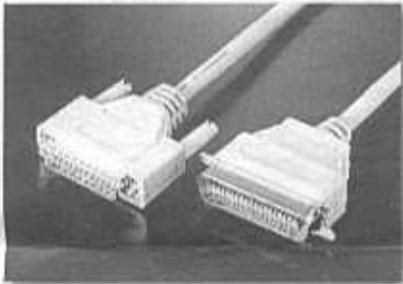
1. If USB device port is not enough for your USB devices, please add a new USB Hub to USB Switch down stream port for getting more USB device ports.
2. The maximum daisy chain levels of USB Hub are 4 levels.
3. When you switch USB device port to your PC, the Windows will take a little time to upload software driver. Normally, the different USB device has the different upload time. The more connecting USB devices, the more taking upload software driver time.
4. There are only three kinds of printer --- some of HP, Epson USB printers and IEEE1284 printers(Only for built-in IEEE-1284 port Mode) can work with USB Share Switch Auto Mode.
5. If you use Lexmark, Canon printer or the other printers (except Epson and HP), please use software manual mode to manage your print jobs.
6. The USB Share Switch only supports 1 USB printer or IEEE-1284 printer automatic switching function

Cable Diagrams

USB A-B Cable:



DB 25 pin cable



CERTIFICATIONS

FCC

This equipment has been tested and found to comply with Part 15 of the FCC Rules.

Operation is subject to the following two conditions:

- (1) This device may not cause harmful interference.
- (2) This device must accept any interference received. Including interference that may cause undesired operation.

CE Certificate

This equipment is in compliance with the requirements of the following regulations: EN 55 022: CLASS B

All brand names and trademarks are the registered property of their respective owners

Product Details



USB-201 Front Panel



USB-401 Front Panel



USB-201P Front Panel



USB-401P Front Panel



USB-201/401/201P/401P Rear Panel

Free Manuals Download Website

<http://myh66.com>

<http://usermanuals.us>

<http://www.somanuals.com>

<http://www.4manuals.cc>

<http://www.manual-lib.com>

<http://www.404manual.com>

<http://www.luxmanual.com>

<http://aubethermostatmanual.com>

Golf course search by state

<http://golfingnear.com>

Email search by domain

<http://emailbydomain.com>

Auto manuals search

<http://auto.somanuals.com>

TV manuals search

<http://tv.somanuals.com>