



# The DL3150 and DL3155 Access Multiplexer

## Economical T3 / E3 access for high-speed data applications.

### Main Benefits:

- Software changeable T3/E3 interface, which enables you to select preferred interface during setup and supports worldwide deployment
- Extensive diagnostic and management features such as Ethernet management port, SNMP agent, or serial console port enable local and remote fault analysis
- Symmetric and asymmetric data rates in 300 Kbps (T3) or 358 Kbps (E3) increments
- M13 framing and C-bit parity compliant (T3) as well as Clear Channel and standard Mux compliant (E3)
- Smooth clock support on HSSI (towards LAN) as well as asymmetric clock towards WAN for compatibility with satellites
- Small footprint and low cost ensure economical T3 / E3 access for one or two high-speed data applications

Bandwidth is becoming more and more a commodity. As a result bandwidth prices have slipped, which is one of the main reasons for the increased demand for subrate or full T3/E3 transmission services. Another driving force for the increased demand for high-speed transmission services is the diversity and complexity of today's data applications.

Quick Eagle Networks' DL3150 and DL3155 Access Multiplexers™ make high-speed data connectivity more economical by enabling you to connect your data terminal equipment (DTE) devices to a public or private T3 / E3 network at full or subrate speeds. Both units support symmetric and asymmetric data rates of up to 34.2 Mbps (in 358 Kbps increments for E3) or 44.2 Mbps (in 300 Kbps increments for T3).

With a software selectable T3 / E3 network interface the DL3150 and DL3155 enable worldwide deployment. It just takes you a stroke of a key to change between the T3 and E3 firmware.

The *DL3150 Access Multiplexer* provides one HSSI data interface to the DTE, while the *DL3155 Access Multiplexer* comes equipped with two HSSI data interfaces. The second HSSI port on the DL3155 enables you to take advantage of multiplexing capabilities. An Ethernet management port as well as a serial console port provide additional options for you to manage the devices besides SNMP management and Telnet capabilities.

Ideal for carrier backbone connectivity via satellite, the DL3150 and DL3155 Access Multiplexers offer smooth clock support on the HSSI (towards the LAN) as well as asymmetric clock support towards the WAN.

The proprietary "Digital Link" mode that is supported by the DL3150 and DL3155 Access Multiplexers is also supported by many leading T3/E3 router vendors.

The DL3150 and DL3155 Access Multiplexers are your best choice when it comes to taking advantage of T3 / E3 transmission services.



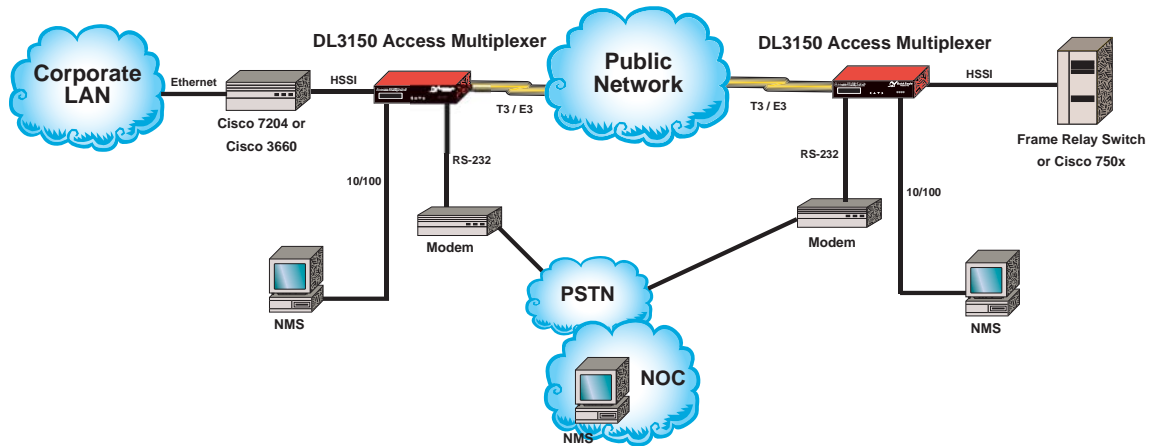
# Leading the communication trend.

The DL3150 and DL3155 Access Multiplexers provide the following features:

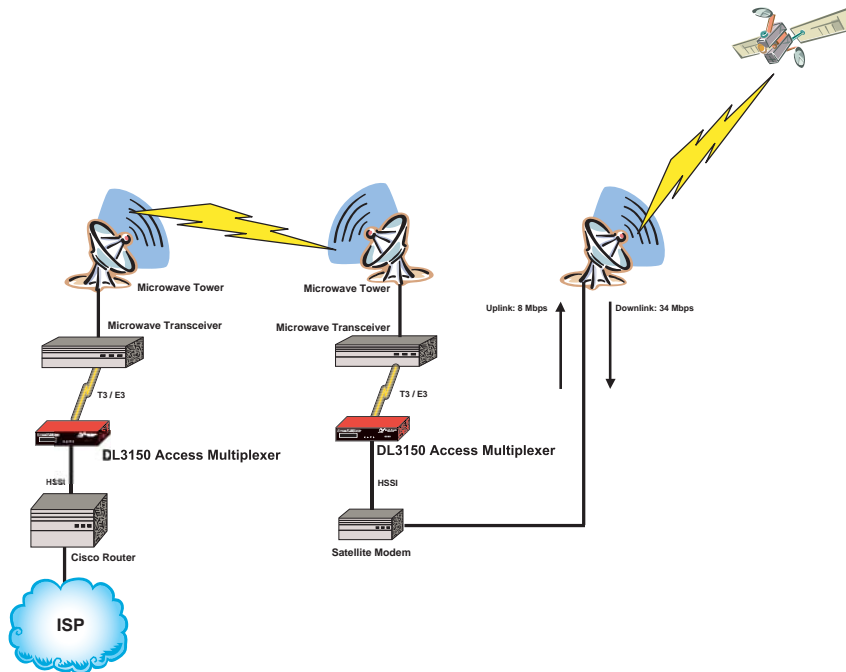
- Software selectable T3 / E3 network interface
- Fluorescent front panel display for easy local access
- AC / DC power supply in the same platform
- 10/100 Ethernet management port
- M13 framing and C-bit parity compliant (T3) as well as Clear Channel and standard Mux compliant (E3)
- Single serial console port for use as COMM port
- Selectable clock (internal, network, external)
- BNC connectors for network and external clock
- Supports symmetric and asymmetric data rates in 300 Kbps (T3) and 358 Kbps (E3) increments
- Downloadable code (TFTP, XMODEM) for easy upgrades
- Proprietary time slotting
- In-band communications and SNMP management capabilities
- Supports T3 / E3 and HSSI statistics
- Supports test pattern generation (future)
- Supports versatile loopbacks (network and DTE payload)
- Satellite compatibility:
  - Smooth clock support at HSSI (towards LAN) for compatibility with satellites
  - Asymmetric clock towards the WAN / LAN
- Compatible with Quick Eagle's DL3100 Access Multiplexer
- Supports unchannelized T3 / E3 substrates
- Support of TACACS+ as an enhanced security feature (special firmware version) to provide centralized validation of users, who attempt to gain access to routers, network access servers, etc. The TACACS+ feature provides modular authentication, authorization, and accounting facilities in conjunction with the user's central TACACS+ server
- Small footprint allows mounting of two units in a 19 inch rack space (using Quick Eagle's rack mount kit)
- The proprietary "Digital Link" mode that is supported by the DL3150 and DL3155 Access Multiplexers is also supported by many leading T3/E3 router vendors

The following diagrams show some of the typical applications supported by the DL3150 / DL3155 Access Multiplexer:

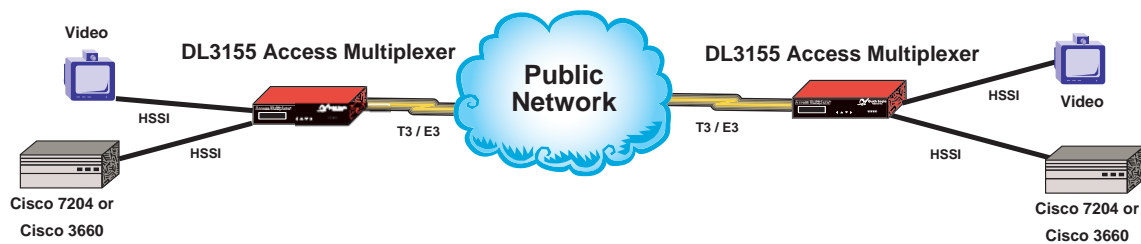
Application 1: Point-to-point deployment with remote and local management



Application 2: Linking an ISP POPs backbone via satellite



Application 3: Multiple services by separating traffic into two scalable channels with full or subrate T3 or E3 connectivity



# DL3150 / DL3155 Access Multiplexer

Loaded Network Interface	T3 Firmware (selectable during configuration)	E3 Firmware (selectable during configuration)
<b>Network Interface</b>		
Line Rate	T3 (44.736 Mbps ± 20 ppm)	E3 (34.368 Mbps ± 20 ppm)
Connector Type	BNC	BNC
Line Code	B3ZS	HDB3
Framing	Standard M13 or C-bit parity	G.751 or clear channel
Pulse Shape	Meets Bellcore TR-TSY-000009	CCITT G.703
Transmit LBO	0 ft to 225 ft, 226 ft to 450 ft	0 ft to 225 ft, 226 ft to 450 ft
Impedance	75 ohm unbalanced, resistive	75 ohm unbalanced, resistive
System Timing	Network, internal, or external	Network, internal, or external
<b>Data Interface</b>		
Port	HSSI	HSSI
Rate	Up to 44.2Mbps in multiples of 300 kbps	Up to 34Mbps in multiples of 358 kbps
Connector Type	50-pin socket Amplimittie (HSSI)	50-pin socket Amplimittie (HSSI)
<b>2nd Data Interface</b> (Available with DL3155 model only)		
Port	HSSI	HSSI
Rate	Up to 44.2Mbps in multiples of 300 kbps	Up to 34Mbps in multiples of 358 kbps
Connector Type	50-pin socket Amplimittie (HSSI)	50-pin socket Amplimittie (HSSI)
<b>Management Connectors</b>		
COMM Port	RJ-45 socket	RJ-45 socket
Fast Ethernet Port	10/100 Ethernet port	10/100 Ethernet port
<b>Power Requirements</b>		
Voltage	110 VAC to 230 VAC, 47-63 Hz, or -42 VDC to -72 VDC	110 VAC to 230 VAC, 47-63 Hz, or -42 VDC to -72 VDC
Consumption	1.2 amps maximum	1.2 amps maximum
<b>Diagnostics</b>		
Loopback Tests	Local and remote DTE/network	Local and remote DTE/network
Network Port LEDs	INS, ALM, RED, YEL, BLU, BPV, DTR	INS, ALM, RED, YEL, BLU, BPV, DTR
Data Port LEDs	INS, TEST, TD, RD, TARTS, CA/CTS, DTR	INS, TEST, TD, RD, TARTS, CA/CTS, DTR
<b>Physical</b>		
Dimensions	1 RU, rack mountable 22.3 cm (8.75 in ) W, x 33 cm (13 in) D, x 4.13 cm (1.63 in) H	1 RU, rack mountable 22.3 cm (8.75 in ) W, x 33 cm (13 in) D, x 4.13 cm (1.63 in) H
Weight	2.27 kg (5 lbs.)	2.27 kg (5 lbs.)
<b>Environmental</b>		
Operating Temperature	0° - 50° C	0° - 50° C
Storage Temperature	-35° - 85° C	-20° - 60° C
Relative Humidity	0 - 95% non-condensing	0 - 95% non-condensing
Maximum Altitude	-6.1 m (-200 ft) to 3,048 m (10,000 ft)	-6.1 m (-200 ft) to 3,048 m (10,000 ft)



**Quick Eagle Networks**

## Headquarters

Quick Eagle Networks (USA)  
830 Maude Avenue  
Mountain View, CA 94043  
+1 650-962-8282 Phone  
+1 650-962-7950 Fax

[info@quickeagle.com](mailto:info@quickeagle.com)

[www.quickeagle.com](http://www.quickeagle.com)

## Northern, Central & Eastern Europe

[info\\_uk@quickeagle.com](mailto:info_uk@quickeagle.com)

## Southern Europe, Middle East & Africa

[info\\_france@quickeagle.com](mailto:info_france@quickeagle.com)

## Asia / Pacific Rim

[info\\_apac@quickeagle.com](mailto:info_apac@quickeagle.com)

## Latin, Central & South America

[info\\_southamerica@quickeagle.com](mailto:info_southamerica@quickeagle.com)

## Canada

[info\\_ca@quickeagle.com](mailto:info_ca@quickeagle.com)

## Order Information

DL3150: DL3150 Access Multiplexer with single HSSI port and single software selectable T3/E3 network interface

DL3155: DL3155 Access Multiplexer with dual HSSI port and single software selectable T3/E3 network interface

© 2007 Quick Eagle Networks. All rights reserved.  
0.5k/DP/05/07

The information presented herein may change without notice and should be used for informational purposes only. DL3150 Access Multiplexer and DL3155 Access Multiplexer are trademarks of Quick Eagle Networks.

## Free Manuals Download Website

<http://myh66.com>

<http://usermanuals.us>

<http://www.somanuals.com>

<http://www.4manuals.cc>

<http://www.manual-lib.com>

<http://www.404manual.com>

<http://www.luxmanual.com>

<http://aubethermostatmanual.com>

Golf course search by state

<http://golfingnear.com>

Email search by domain

<http://emailbydomain.com>

Auto manuals search

<http://auto.somanuals.com>

TV manuals search

<http://tv.somanuals.com>