

Atomic Alarm Clock

Thank you for purchasing your Atomic Alarm Clock from **RadioShack**. Please read this user's guide before installing, setting up, and using your new clock.



Features

- Radio controlled clock receives signal from WWVB 60kHz and adjusts time and date automatically.
- LED backlight.
- 4 time zone settings.
- Daylight saving time.
- Alarm and snooze function.
- Indoor temperature with Celsius or Fahrenheit option.

Check package contents

- Atomic Clock
- Quick Start
- User's Guide

1 Select a Location

- Place your clock near a window.
- Do not place in direct sunlight, next to heat or cold sources such as stoves and freezers, or heating vents.
- Keep the clock away from high power cables, TVs, microwaves, refrigerators, computers, and metal furniture.
- Your atomic clock will not work in Alaska or Hawaii.

2 Install Batteries

1. Press the tab to remove the battery compartment cover.
2. Insert two AA batteries (not included) matching the polarity symbols (+ and -) marked inside.
3. Replace the cover.



Replace batteries when the display dims.

Battery Notes

- Dispose of batteries promptly and properly. Do not burn or bury them.
- Use only fresh batteries of the required size and type.
- Do not mix old and new batteries, different types of batteries (alkaline, or rechargeable), or rechargeable batteries of different capacities.
- If you do not plan to use the atomic clock, remove the batteries. Batteries can leak chemicals that can damage electronic parts.

SNOOZE/LIGHT

- Press to turn on the backlight for 5 seconds.
- When the alarm sounds, press once to stop the alarm for 5 minutes.

TIME/SET

Set time, year, month, date, and temperature reading.

ALM/SET

Set alarm or switch between viewing the month/date and alarm time.

Signal Reception Indicator

Snooze On

Clock Time

12 or 24 hour format.

Alarm On



ALARM ON/OFF

Turn alarm on or off.

(/ZONE

- Decrease settings in the time and alarm modes.
- Select the desired time zone.

) /WAVE

- Increase settings in the time and alarm modes.
- In the normal time display, press for 3 seconds to activate the manual signal search. Press again to turn it off.

Daylight Saving Indicator

Time Zone

Temperature

°C or °F

Month and Day or Alarm Time

Day of the Week



3 Set Time and Date

Automatic Settings

1. After batteries are installed, the clock starts searching for the WWVB signal from the atomic clock in Fort Collins, Colorado.
2. One of the signal reception indicators flashes during signal search.

Weakest	Weaker	Weak	Normal	Strongest
▲	⬇	⬇	⬆	⬆

3. If reception succeeds, date and time are updated automatically, and ⬆ displays until the next reception cycle.

If the reception fails, no signal indicator appears. Hold down) /WAVE for 3 seconds to receive signal manually. If it still fails, follow "Manual Settings" on page 8 to set the date and time.

The clock automatically updates the atomic time daily at 3:00 a.m., 4:00 a.m., 5:00 a.m., or

6:00 a.m. It stops the update once the time is updated for the day.

Notes:

- The radio signal search takes approximately 10 minutes after batteries are installed or when **RESET** is pressed. If you want to set the time and date manually, press) /WAVE to stop signal search at any time.
- The clock automatically adjusts the daylight saving time (DST) upon receipt of a signal, and ☀ displays. If you are in an area that does not recognize DST, change the time zone on your clock until it matches the correct hour.
- During the radio signal search, all function keys stop working except **SNOOZE/LIGHT**.
- Signal reception might be affected if your clock is placed in a basement or anywhere near large metal structures (tall buildings, freeways, airports, or railways).
- On very cloudy and stormy days, the radio signal might not be strong enough to set the clock.

Manual Settings

1. Press (/ZONE to select the time zone P (Pacific), M (Mountain), C (Central), or E (Eastern).
2. Hold down **TIME/SET** until 12 Hr flashes.
3. Press) /WAVE or (/ZONE to select available options.
4. Press **TIME/SET** to confirm and move on to the next setting.
5. Repeat Steps 3 and 4 to set the hour, minute, year, month, date, and temperature options.

After setting the date, the clock automatically sets the day of the week.

Notes:

- The Atomic Clock will override manual settings if it receives a good radio signal.
- The calendar extends from 2000 to 2099. The year digits do not appear on the main display. Hold down **TIME/SET** until 12 Hr flashes, then press three more times to view. Press **TIME/SET** four times until you are at the original display.

- If you do not press any key within 10 seconds, the clock returns to the current time display.

Set the Alarm

1. Press **ALM/SET**. **ALARM** displays and the alarm time shows instead of the date.




2. Hold down **ALM/SET** until the hour digits flash.
3. Press) /WAVE or (/ZONE to set the hour.
4. Press **ALM/SET** to confirm.
5. Repeat Steps 3 and 4 to set the minutes.
6. Slide **ALARM ON/OFF** to **ON**. ☞ appears.

At the set alarm time, the clock produces a series of beeps for 1 minute. Beep sequence is listed on page 10.

Duration	Alarm
0-9 seconds	one beep per second
10-29 seconds	two beeps per second
30-59 seconds	three beeps per second

Snooze

When the alarm sounds, press **SNOOZE/LIGHT** on top of the clock to silence the alarm for 5 minutes. ¼ and ☞ flash. After 5 minutes, the alarm sounds again. You can repeatedly use the snooze feature as many times as you like. To stop snooze, press any button except **SNOOZE/LIGHT**. ¼ disappears.

 **Note:** Your clock must be on a solid, flat surface so the pressure switches on the bottom are triggered when you press **SNOOZE/LIGHT**. Otherwise, you may not activate the snooze and backlight functions.

Pressure Switch



Stop the alarm until the next day:

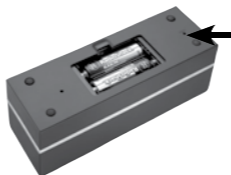
Press any button except **SNOOZE/LIGHT**. ☞ remains on the display and the alarm will sound again at the set time the next day.

Turn off the alarm completely:

Slide **ALARM ON/OFF** to **OFF**. ☞ disappears.

RESET

If your clock stops working properly, use a straightened paper clip to press **RESET** on the bottom of your clock. All display segments briefly appear, then the clock starts searching for a signal.



Specifications

Atomic frequency 60kHz WWVB
Power source..... Two AA batteries
Temperature range..... -10°~50°C (14°~122°F)
Dimensions (H×W×D) 2½ × 6⅞ × 2 in.
..... (66 × 154 × 50 mm)
Weight 8.1 oz (230 g)
Specifications are subject to change and improvement without notice. Actual product may vary from the images found in this document.



Recycle Rechargeable Batteries

Placing rechargeable batteries in the trash can be harmful to the environment. Instead, recycle old rechargeable batteries at your local **RadioShack** store free of charge. **RadioShack** participates in the RBRC® battery recycling program, and is committed to preserving the environment and conserving natural resources. Call 1-800-THE-SHACK (1-800-843-7422) for more information.

FCC Information

This equipment has been tested and found to comply with the limits for a Class B digital device, pursuant to Part 15 of the FCC Rules. These limits are designed to provide reasonable protection against harmful interference in a residential installation. This equipment generates, uses, and can radiate radio frequency energy and, if not installed and used in accordance with the instructions, may cause harmful interference to radio communications. However, there is no guarantee that interference will not occur in a particular installation. If this equipment does cause harmful interference to radio or television reception, which can be determined by turning the equipment off and on, the user is encouraged to try to correct the interference by one or more of the following measures:

- Reorient or relocate the receiving antenna.
- Increase the separation between the equipment and receiver.
- Connect the equipment into an outlet on a circuit different from that to which the receiver is connected.
- Consult your local **RadioShack** store or an experienced radio/TV technician for help.

If you cannot eliminate the interference, the FCC requires that you stop using your equipment. Changes or modifications not expressly approved by **RadioShack** may cause interference and void the user's authority to operate the equipment.

FCC Declaration of Conformity

This device complies with Part 15 of the FCC rules. Operation is subject to the following two conditions: (1) This device may not cause harmful interference, and (2) This device must accept any interference received, including interference that may cause undesired operation.



Product	Atomic Alarm Clock
Model	63-246
Responsible Party	RadioShack 300 RadioShack Circle Fort Worth, TX 76102
Phone	817-415-3200

Limited Warranty

RadioShack warrants this product against defects in materials and workmanship under normal use by the original purchaser for **ninety (90) days** after the date of purchase from a **RadioShack**-owned store or an authorized **RadioShack** franchisee or dealer. **RADIOSHACK MAKES NO OTHER EXPRESS WARRANTIES.**

This warranty does not cover: (a) damage or failure caused by or attributable to abuse, misuse, failure to follow instructions, improper installation or maintenance, alteration, accident, Acts of God (such as floods or lightning), or excess voltage or current; (b) improper or incorrectly performed repairs by persons who are not a **RadioShack** Authorized Service Facility; (c) consumables such as fuses or batteries; (d) ordinary wear and tear or cosmetic damage; (e) transportation, shipping or insurance costs; (f) costs of product removal, installation, set-up service, adjustment or reinstallation; and (g) claims by persons other than the original purchaser.

Should a problem occur that is covered by this warranty, take the product and the **RadioShack** sales receipt as proof of purchase date to any **RadioShack** store in the U.S. **RadioShack** will, at its option, unless otherwise provided by law: (a) repair the product without charge for parts and labor; (b) replace the product with the same or a comparable product; or (c) refund the purchase price. All replaced parts and products, and products on which a refund is made, become the property of

RadioShack. New or reconditioned parts and products may be used in the performance of warranty service. Repaired or replaced parts and products are warranted for the remainder of the original warranty period. You will be charged for repair or replacement of the product made after the expiration of the warranty period.

RADIOSHACK EXPRESSLY DISCLAIMS ALL WARRANTIES AND CONDITIONS NOT STATED IN THIS LIMITED WARRANTY. ANY IMPLIED WARRANTIES THAT MAY BE IMPOSED BY LAW, INCLUDING THE IMPLIED WARRANTY OF MERCHANTABILITY AND, IF APPLICABLE, THE IMPLIED WARRANTY OF FITNESS FOR A PARTICULAR PURPOSE, SHALL EXPIRE ON THE EXPIRATION OF THE STATED WARRANTY PERIOD.

EXCEPT AS DESCRIBED ABOVE, **RADIOSHACK** SHALL HAVE NO LIABILITY OR RESPONSIBILITY TO THE PURCHASER OF THE PRODUCT OR ANY OTHER PERSON OR ENTITY WITH RESPECT TO ANY LIABILITY, LOSS OR DAMAGE CAUSED DIRECTLY OR INDIRECTLY BY USE OR PERFORMANCE OF THE PRODUCT OR ARISING OUT OF ANY BREACH OF THIS WARRANTY, INCLUDING, BUT NOT LIMITED TO, ANY DAMAGES RESULTING FROM INCONVENIENCE AND ANY LOSS OF TIME, DATA, PROPERTY, REVENUE, OR PROFIT AND ANY INDIRECT, SPECIAL, INCIDENTAL, OR CONSEQUENTIAL DAMAGES, EVEN IF **RADIOSHACK** HAS BEEN ADVISED OF THE POSSIBILITY OF SUCH DAMAGES.

Some States do not allow limitations on how long an implied warranty lasts or the exclusion or limitation of incidental or consequential damages, so the above limitations or exclusions may not apply to you. This warranty gives you specific legal rights, and you may also have other rights which vary from State to State. You may contact **RadioShack** at:

RadioShack Customer Relations
300 RadioShack Circle, Fort Worth, TX 76102 04/08
www.RadioShack.com



Protect the environment by recycling used electronics. Go to E-CyclingCentral.com to find an electronic recycling center near you.

©2009. **RadioShack** Corporation. All rights reserved. **RadioShack** and **RadioShack.com** are trademarks used by **RadioShack** Corporation.

Printed in China 02A09 63-246

Free Manuals Download Website

<http://myh66.com>

<http://usermanuals.us>

<http://www.somanuals.com>

<http://www.4manuals.cc>

<http://www.manual-lib.com>

<http://www.404manual.com>

<http://www.luxmanual.com>

<http://aubethermostatmanual.com>

Golf course search by state

<http://golfingnear.com>

Email search by domain

<http://emailbydomain.com>

Auto manuals search

<http://auto.somanuals.com>

TV manuals search

<http://tv.somanuals.com>