



CS0415 – 50 lb Cube Ice Machine

CS0415 – 50 lb Cube Ice Machine

Self-Contained Under Counter Cuber with Storage

PRELIMINARY



Features

Produces up to 49 lb of small cube ice in 24 hours and stores up to 26 lb of ice.

Compact design allows for placement in tight locations.

15" cabinet width.

Ideal for any under counter bar application.

Unique door flap prevents spillage and maximizes storage.

Produces clear, cube shape ice which is ideal for mixed drinks and carbonated beverages.

24 Hour Volume Production

Air Cooled		
70°F/21°C	Air	ARI 90°F/32°C
50°F/10°C	Water	70°F/21°C
lb/kg		lb/kg
49/22		44/20



Designed with a unique inside door flap to prevent spillage and maximize storage.

Cube Ice



Small Cube
3/4" x 3/4" x 3/8"
(2 x 2 x .95 cm)

Common ice form, ideal for mixed drinks.

Warranty

• 1 years parts and labor on all components.

Warranty valid in North, South & Central America. Contact factory for warranty in other regions.

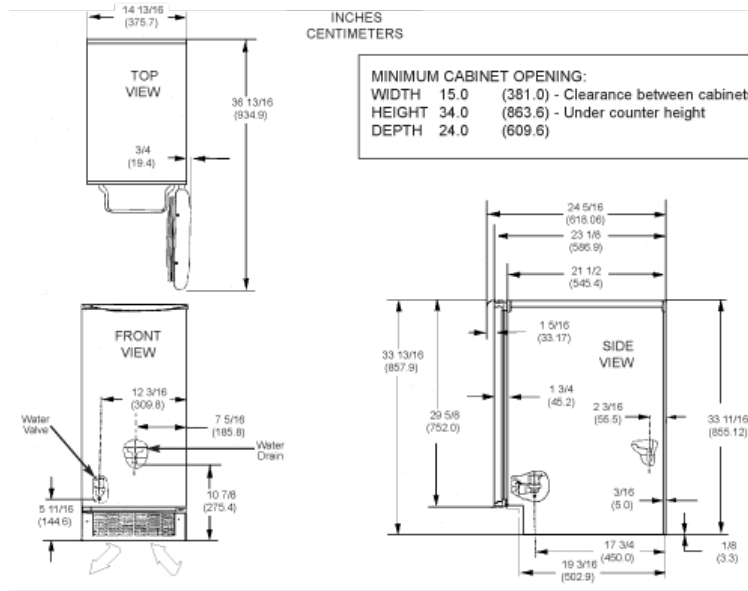
Scotsman Ice Systems
775 Corporate Woods Parkway
Vernon Hills, IL 60061

1-800-SCOTSMAN
Fax: 847-913-9844
E-mail: customer.service@scotsman-ice.com

www.scotsman-ice.com



Installation Note: Allow 6" space at back for utility connections.



Specifications

Model Number	Condenser Unit	Storage Capacity lb/kg	Basic Electrical Volts/Hz/Phase	Max. Fuse Size or HACR Circuit Breaker (amps)	Circuit Wires	Min. Circuit Ampacity	Energy Consumption kWh/100 lb (45.4 kg) 90°F(32°C)/70°F(21°C)	Water Usage Gallons/100 lb (liters/45.4 kg)	
								Potable 90°F(32°C)/70°F(21°C)	Condenser 90°F(32°C)/70°F(21°C)
CS0415A-1A	Air	25/11	115/60/1	15	2	Cord	16.7	48/12.7	-
CS0415PA-1A	Air	25/11	115/60/1	15	2	Cord	16.7	48/12.7	-

Finish: White, high gloss baked enamel steel.

CS0415PA-1A comes with a pump drain instead of a gravity drain. Maximum vertical pumping height 10'.

Refrigerant - R134a.

All Models

Dimensions (W x D x H):

Unit:

14.9" x 21.9" x 34"
(37.8 x 55.6 x 86.4 cm)

Shipping Carton:

17.375" x 28.5" x 36.375"
(44.1 x 72.4 x 92.4 cm)

Shipping Weight:

CS0415A-1A 101 lb / 46 kg
CS0415PA-1A 107 lb / 49 kg

BTUs per hour:

N/A

Accessories

Model Number	Description
KCSWFILL	Filler kit for installing icemaker in 18" opening.
KCSWTRIM	Trim kit for putting wood cabinet front on icemaker door.

* Scotsman recommends all ice machines have water filtration. See Scotsman Sanitation Matrix for details.

Operating Requirements

	Minimum	Maximum
Air Temperatures	50°F (10°C)	100°F (38°C)
Water Temperatures	40°F (4.4°C)	100°F (38°C)
Remote Cond. Temps	-20°F (-29°C)	120°F (49°C)
Water Pressures	20 PSIG (1.4 bar)	80 PSIG (5.5 bar)
Electrical Voltage	-10%	+10%

Free Manuals Download Website

<http://myh66.com>

<http://usermanuals.us>

<http://www.somanuals.com>

<http://www.4manuals.cc>

<http://www.manual-lib.com>

<http://www.404manual.com>

<http://www.luxmanual.com>

<http://aubethermostatmanual.com>

Golf course search by state

<http://golfingnear.com>

Email search by domain

<http://emailbydomain.com>

Auto manuals search

<http://auto.somanuals.com>

TV manuals search

<http://tv.somanuals.com>