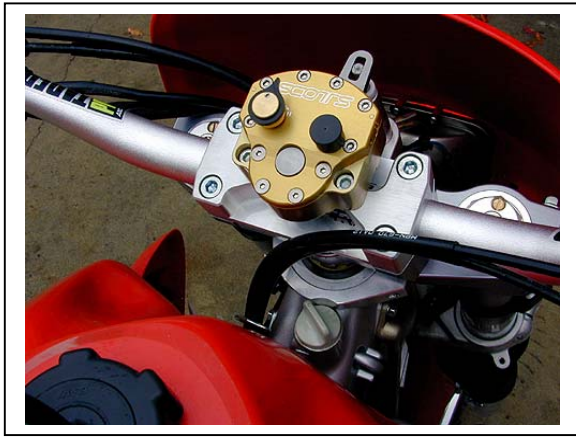
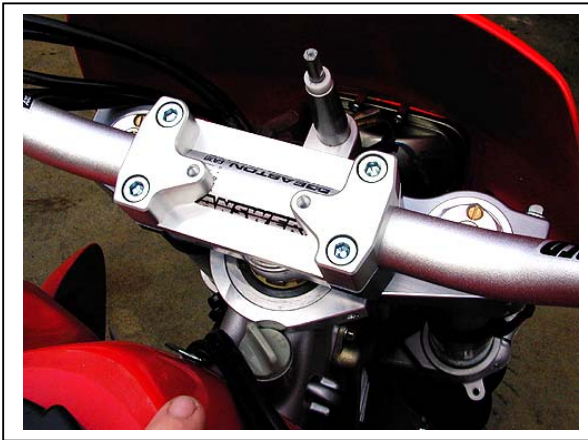




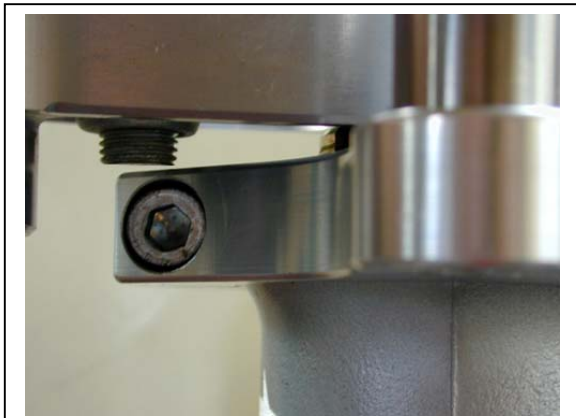
2625 Honolulu Ave · Montrose, CA 91020 · 818 248-6747 · Fax: 818 248-4529
www.scottsonline.com · e-mail: sales@scottsonline.com

XR 650R Front-Mount stabilizer kit

1. This kit was designed for use on the Baja 1000 race bikes and has been in the winner's circle many times over.
2. If mounted properly it will give you years of trouble free service. Follow the instructions please.
3. This front mount kit requires re-locating the odometer! (Optional odometer mount is available from Scotts and can be viewed on line at www.scottsonline.com) or in the photos on this instruction page.
4. This kit is designed to fit with the Scotts Triple clamp only! Since the clearances are very close, we cannot be responsible for other triple clamp manufacturer's dimensions and options. We've gone to great lengths to make our product fit easily and function correctly when using our stabilizer with our upper triple clamp.
5. Remove the stock top triple clamp.
6. Remove the stock odometer and cable and discard or relocate to the right upper triple clamp pinch bolts with the optional Scotts stainless steel remote odometer bracket (see photo). This same remote bracket can be used for various computers such as the Trail tech computers also. It's been made specifically to accommodate the stock odometer for relocation.
7. Before installing the frame bracket, examine the head tube area to be sure no obstructions will prohibit the installation of the frame bracket. A burr or raised area on the aluminum could fracture the frame bracket.
8. Install the new billet one-piece frame bracket checking the fit all the way around the backside of the frame where the frame casting may vary in size. It's vital that our bracket seat evenly all the way around the head tube if you expect it to stay on. A few extra minutes to make sure all the very small casting flaws are out of the way will insure many years of quality use.
9. The frame bracket must sit down flush with the top of the head tube. If it protrudes above the surface of the head tube, you must file the casting flaws until it's flush or you will jeopardize the brackets strength and ability to stay tight. If not flush, you may also experience interference from the triple clamp bolts on the under side to the top of the frame bracket. Review the photos. which shows the proper installation clearances.
10. If the frame bracket will not drop down flush with the head tube you may need to file the knob or casting area just behind the head tube where the slag or imperfections disallow the frame bracket to drop down all the way. File in a fashion that keeps the head tube shape (round) but allows the frame bracket to drop down until flush. These are rare cases and normally need very little filing.
11. Once the bracket is mounted flush, reinstall the triple clamp and be sure it swings clearly both ways to the stops.
12. Keep the clutch cable and any wires routed below the frame bracket so they are not "pinched" by the rotating triple clamp. Street legal kits on XR's will need the wires zip tied up away from the rotating triple clamp. Be sure to turn the bars from lock to lock and verify the cables or wires won't get tangled in the tower or damper linkarm.
13. Mount the Stabilizer to the triple clamp and align the linkarm slot to the vertical tower on the frame bracket.
14. Sit on your bike and be sure the frame bracket is aligned when the wheel is pointing straight ahead.
15. Tighten all the triple clamp bolts and the steering head nut.
16. Do not over tighten the pinch bolt on the frame bracket, because it normally fits very tight anyway, just normal tension on the 8mm bolt is plenty. Over tightening the bolt can cause the bracket to fracture.
17. If you have replaced the handlebars be sure the width is narrow enough to prevent the throttle cables from pulling tight at full lock. The stock XR bars are 31" wide, any wider could pull on the throttle cables.
18. Keep the floating tower pin greased, so it stays free to float in the vertical tower assuring alignment.
19. Check your stabilizer manual for initial settings and how to adjust your stabilizer. Call us if you have questions.



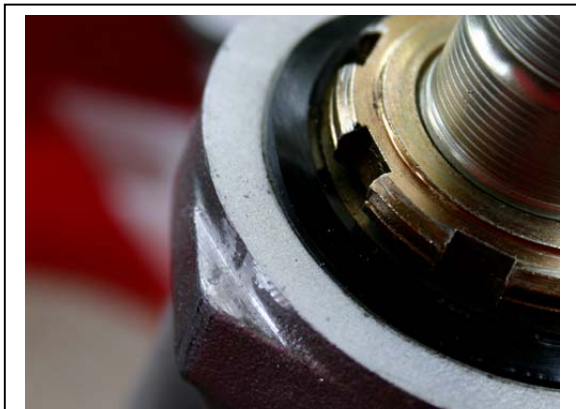
Frame bracket must be flush with top of head tube



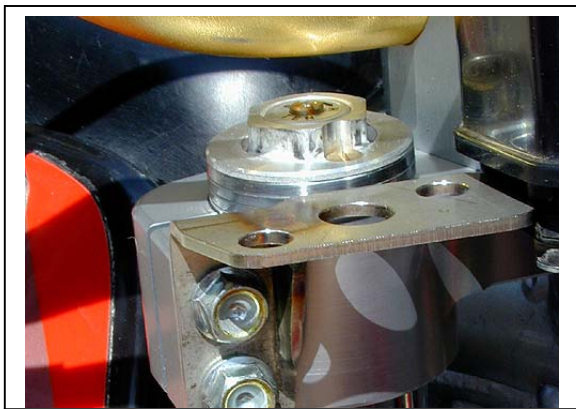
Be sure triple clamp clears the frame bracket



File the casting flaws both front and rear until smooth, round and allowing the bracket to sit down flush



Team Honda Johnny Campbell's Race bike



Optional stainless odometer relocation bracket

Free Manuals Download Website

<http://myh66.com>

<http://usermanuals.us>

<http://www.somanuals.com>

<http://www.4manuals.cc>

<http://www.manual-lib.com>

<http://www.404manual.com>

<http://www.luxmanual.com>

<http://aubethermostatmanual.com>

Golf course search by state

<http://golfingnear.com>

Email search by domain

<http://emailbydomain.com>

Auto manuals search

<http://auto.somanuals.com>

TV manuals search

<http://tv.somanuals.com>