



SEAL SMART™ Keyboard with Integrated Smart Card Reader Model S103R



100% Waterproof • Spillproof • Dishwasher Safe • Guaranteed

- Dishwasher Safe for easy cleaning
- 100% Waterproof Guaranteed – 2-Year Limited Warranty
- Silver Seal™ Protection (antimicrobial plastic reduces bacteria growth on product surface)
- Durable and Safe
- Integrated Smart Card Reader (SCM Microsystems SCR3310v2.0 – FIPS 201 Compliant)
- Plug-and-Play installation
- Ergonomic Comfort
- Patent Pending



SEAL SHIELD™ Protects Against

Water	Solvents	Salt Water
Disinfectants	Humidity	Abrasives
Dust	Corrosives	Dirt
Sand	Shock	Alkaline
Alcohol	Bleach	Acid
Blood	Heat	Cold

SEAL SHIELD™ Seal Smart™ Keyboard with Integrated Smart Card Reader

100% Waterproof • Spillproof • Dishwasher Safe • Guaranteed



100% Waterproof — Guaranteed
Seal Shield™ waterproof technology (Patent Pending) products are fully submersible and manufactured to meet rigorous NEMA 4X and IP68 specifications. Seal Shield™ products are rugged and safe and are backed by a 2-Year Limited Warranty.



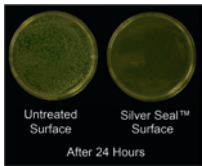
Integrated Smart Card Reader
Supports ISO/IEC 7816 smart card Class A, B, C. Now you can enjoy easy smart card access within a keyboard that is completely washable. Ideal for hospitals, military applications and other environments.



100% Spillproof
Accidents happen. Small spills, big spills, even complete submersion — Seal Shield™ can handle it. Whenever accidents happen, or just to keep the product clean, rinse it off under the faucet, soak it in the sink, or put it in the dishwasher. Your Seal Shield™ product comes out clean and ready to use.



Dishwasher Safe
Seal Shield™ products are easy to clean. Just put them in the dishwasher to thoroughly clean and disinfect. Convenient product features makes it fast and easy to go straight from use to the dishwasher for cleaning and back again.



Silver Seal™ Protection
Silver ions embedded in the plastic provide antimicrobial protection for the product and resist microbial growth and the spread of bacteria on product surfaces. Safe and effective.



Good Housekeeping Seal of Approval
Seal Shield™ products have earned the seal after evaluation or review by the Good Housekeeping Research Institute. Go to ghseal.com for a complete list of approved products.



Keyboard Specifications

Compatibility:	Windows
Key layout:	103 (US) 105 (International)
Dimensions	
L x W x H:	15.67in x 8.62in x 1.26in (39.8cm x 21.9cm x 3.2cm)
Cable Length:	6in (15cm) Quick Connect™ with USB extension cable
Connection Types:	Gold-plated USB with PS/2 adapter
Key Switch:	Membrane key switch with tactile feedback
Key Switch Operating Force:	55 ± 10gf
Key Switch Life Cycle:	Greater than 10 million keystrokes
Keycaps Type:	Laser etched
Total Key Travel:	.157 ± .019 in (4±0.5mm)
Operating Voltage:	+ 5VDC ± 5%
EMI - RFI:	Conforms to FCC rules for a Class B computing device
Approvals/Certifications/Ratings:	IP 68, NEMA 4X, RoHS, WEEE, CE, FCC, TAA
Waterproof and Dustproof Ratings:	100% Waterproof and Dustproof (IP 68, NEMA 4X)
Operating Conditions:	0-50C, 0-90% Humidity (non-condensing)

Card Reader Specifications

Model:	SCM Microsystems SCR3310v2.0 — FIPS 201 Compliant
Host USB Interface:	Full speed USB 2.0 (12 Mbps) USB Bus powered device CCID compliant
Smart Card Contact Interface:	T=0, T=1 protocol support Memory card support through SCM MCARD API Communication speed (PPS, FI parameter) up to 412 kbs Frequency up to 8 MHz (PPS, DI parameter) Supports ISO 7816 smart card Class A, B, C 8 contacts - ISO 7816 location Friction contact, 100,000 insertions
Human Optical Interface:	One green LED
Software API Interface:	PC/SC CT-API (thru wrapper on top of PC/SC) (FCC Class B part 15)(cULus)(CE)(VCCI) (ICES-003 Issue4 ClassB)(USB-IF) (Microsoft® WHQL 2000, XP, Server2003, Vista, Win7) (EMV 2000 Level 1) TAA Certified
Functional Approvals:	RoHS, WEEE, REACH compliance
Environmental Approvals:	



Seal Shield, LLC
Jacksonville, FL 32205
www.SealShield.com
S103R-08202010

Free Manuals Download Website

<http://myh66.com>

<http://usermanuals.us>

<http://www.somanuals.com>

<http://www.4manuals.cc>

<http://www.manual-lib.com>

<http://www.404manual.com>

<http://www.luxmanual.com>

<http://aubethermostatmanual.com>

Golf course search by state

<http://golfingnear.com>

Email search by domain

<http://emailbydomain.com>

Auto manuals search

<http://auto.somanuals.com>

TV manuals search

<http://tv.somanuals.com>