


You are now the proud owner of a SEIKO 1/100-Second Retrograde Chronograph Cal. 7T82. For best results, please read the instructions in this booklet carefully before using your SEIKO Analogue Quartz Watch. Please keep this manual handy for ready reference.

Es usted ahora el orgulloso propietario del Cronógrafo Retrógado de 1/100 de Segundo de SEIKO, Cal. 7T82. Para óptimo resultado, lea detenidamente las instrucciones de este folleto antes de usar el reloj. Guarde este manual para consulta posterior.



CONTENTS

	Page
FEATURES	4
SCREW DOWN CROWN	6
TIME AND CALENDAR SETTING AND STOPWATCH HAND POSITION ADJUSTMENT	7
HOW TO USE THE STOPWATCH	12
DEMONSTRATION FUNCTION OF THE STOPWACH HAND MOVEMENT	16
TACHYMETER (for models with tachymeter scale on the dial)	17
TELEMETER (for models with telemeter scale on the dial)	19
BATTERY CHANGE	21
NECESSARY PROCEDURE AFTER BATTERY CHANGE	23
TROUBLESHOOTING	24
SPECIFICATIONS	26

☆ For the care of your watch, see "TO PRESERVE THE QUALITY OF YOUR WATCH" in the attached Worldwide Guarantee and Instruction Booklet.

SEIKO CAL. 7T82

FEATURES

■ TIME/CALENDAR

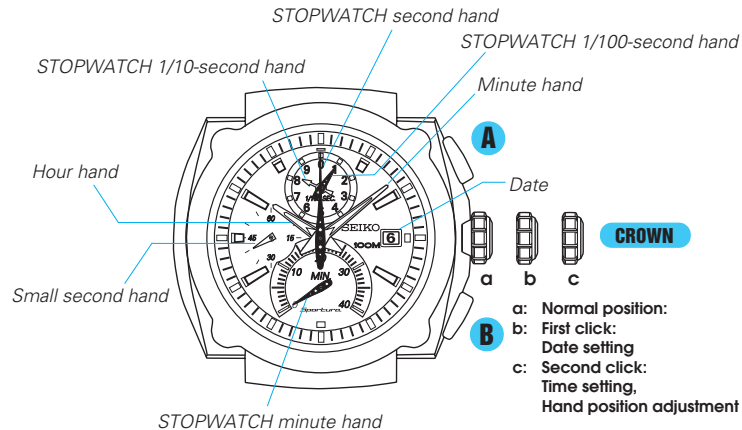
Hour, minute and small second hands

■ STOPWATCH

- 40-minute measurement in 1/100-second increments, consecutively measurable up to 120 minutes
- 4 STOPWATCH hands
 - 1/100-second, 1/10-second, second and minute hands
- Split time measurement on demand
- 1/100-second high-speed movement
 - The STOPWATCH 1/100-second hand makes 10 full circles in one second.

- 40-minute dial with a retrograde minute hand

When the minute counting reaches 40 minutes, the STOPWATCH minute hand immediately returns and continues counting from 41 minutes onward. The minute counting is repeated in the same manner for another rotation, up to 120 minutes, at that time the stopwatch automatically stops counting.



- If your watch has a screw down crown, refer to "SCREW DOWN CROWN" section on the next page.
- Simplified illustrations are used in the following sections of this manual.

SCREW DOWN CROWN

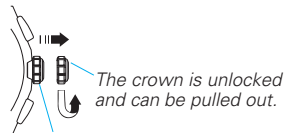
- Some models have a screw down crown to prevent accidental operation and help maintain water-resistant quality.
- To use the crown, it is necessary to unlock the crown first before pulling it out, and it is important to securely screw the crown in after each use.

HOW TO OPERATE THE SCREW DOWN CROWN

The crown must be securely locked in the case except when you use it to set the watch.

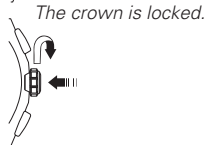
<How to unlock the crown>

Turn the crown counterclockwise to unscrew it. The crown is released and projected outward from its original position.



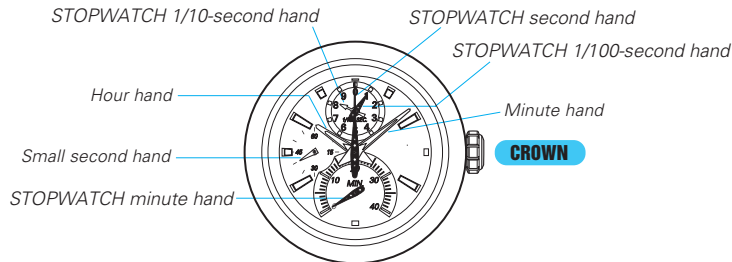
<How to lock the crown>

Turn the crown clockwise while pressing it to the case until it is screwed all the way in and locked.



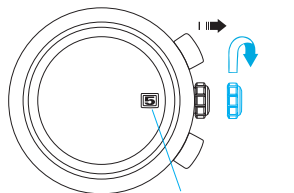
* When screwing the crown in, ensure that the crown is correctly aligned and turn it gently. If it is too hard to turn, unscrew it first, and then rewind it. Do not screw it in by force as it may damage the thread of the screw or the case.

TIME AND CALENDAR SETTING AND STOPWATCH HAND POSITION ADJUSTMENT



- This watch is designed so that the following adjustments are made with the crown at the second click position:
 - time setting
 - stopwatch hand position adjustment
 Once the crown is pulled out to the second click, be sure to make both the above adjustments 1) and 2) at the same time.
- The date adjustment is done with the crown at first click position.

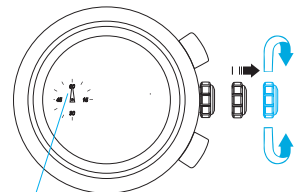
1) TIME AND CALENDAR SETTING



Previous day's date

CROWN Pull out to first click.

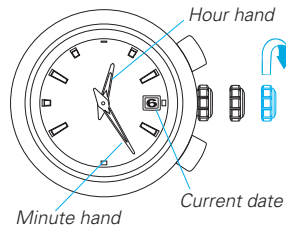
CROWN Turn clockwise until the previous day's date appears.



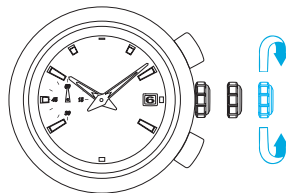
Small second hand

CROWN Pull out to second click when the small second hand is at the 12 o'clock position. The small second hand will stop on the spot.

** If the crown is pulled out when the stopwatch is measuring, the stopwatch will be automatically reset.*



CROWN Turn clockwise to advance hour and minute hands past 12:00 AM. Doing so will advance the date to the current date.



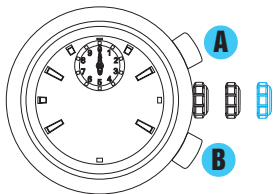
CROWN Set the hour and minute hands to the desired time taking AM and PM into consideration.

** It is recommended that the minute hand be set 4 to 5 minutes ahead of the time, and then turn it back to the exact minute.*

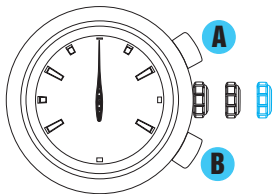
1. It is necessary to adjust the date at the end of February and 30-day months.
2. Do not set the date between 9:00 p.m. and 1:00 a.m. Otherwise, the date may not change properly.

2) STOPWATCH HAND POSITION ADJUSTMENT

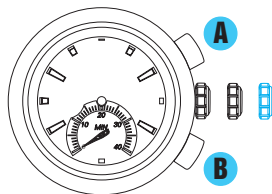
- ☆ If the STOPWATCH hands are not in the "0" position, follow the procedure below to set them to the "0" position.



- A** Press for 2 seconds.
* STOPWATCH 1/10-second and 1/100-second hands turn a full circle.
- B** Press repeatedly to set the STOPWATCH hands to the "0" position.
* The hands move quickly if Button B is kept pressed.



- A** Press for 2 seconds.
* STOPWATCH second hand turns a full circle.
- B** Press repeatedly to set it to the "0" position.
* The hand moves quickly if Button B is kept pressed.



- A** Press for 2 seconds.
* STOPWATCH minute hand turns a full circle.
- B** Press repeatedly to set it to the "0" position.
* The hand moves quickly if Button B is kept pressed.
* STOPWATCH minute hand turns a full circle passing the 40-minute marker only during the STOPWATCH hand position adjustment.

- If Button **A** is pressed again for 2 seconds, you can go back to the adjustment of 1/10- and 1/100-second hands and so on in the following order.

STOPWATCH
1/10- and 1/100-second
hands

STOPWATCH
second hand

STOPWATCH
minute hand

CROWN

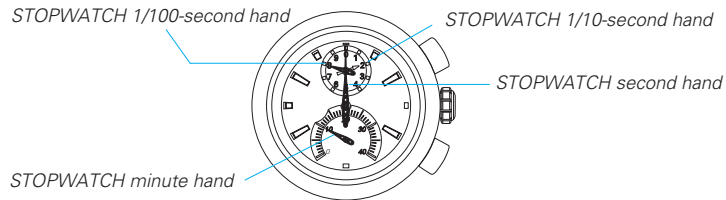
After all the adjustments are completed, push back in to the normal position in accordance with a time signal.

HOW TO USE THE STOPWATCH

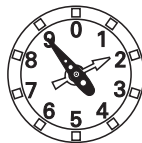
- The stopwatch features a 40-minute dial with a retrograde minute hand.
- The stopwatch can consecutively measure up to 120 minutes in 1/100-second increments. When the measurement reaches 120 minutes, the stopwatch automatically stops counting.
- Split time measurement is possible.
- After 3 minutes of timing from a start, the STOPWATCH 1/100-second and 1/10-second hands remain pointing to the "0" position until the watch is stopped or split time measurement is made, at such a time, they move to display the measured time. They start to move for a maximum of three minutes after the watch is restarted or the split time display is released.

<How to read the stopwatch hands>

The time measured is indicated by the four stopwatch hands below.



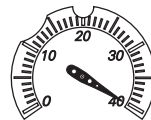
- Reading the 1/100-second and 1/10-second hands requires extra attention.



* The display illustrated at the left should be read as "19," not "29." When the 1/100-second hand is moving toward larger numbers, the 1/10 second hand comes close to the next marker, which may cause you to wrongly read the hands as "29."

<Remarks on the STOPWATCH minute hand movement>

- When the minute counting reaches 40 minutes, the STOPWATCH minute hand immediately returns and continues counting from 41 minutes onward. The minute counting is repeated in the same manner for another rotation, up to 120 minutes, at that time the stopwatch automatically stops.
- The final position of the STOPWATCH minute hand, after completing 120 minutes of counting, is illustrated below.



- Before starting to use the stopwatch again, make sure to reset the stopwatch by pressing Button B.

<How to reset the stopwatch>**While the STOPWATCH hands are moving**

1. Press Button A to stop the stopwatch.
2. Press Button B to reset the stopwatch.

While the STOPWATCH hands are stopped

(When the stopwatch is stopped)

1. Press Button B to reset the stopwatch.

(When the split time measurement is displayed while the stopwatch is measuring.)

1. Press Button B to release the split time display and return to the normal display
2. Press Button A to stop the stopwatch
3. Press Button B to reset the stopwatch

(When the split time measurement is displayed and the stopwatch is stopped.)

1. Press Button B to release the split time display.
2. Press Button B to reset the stopwatch.

Standard measurement**Accumulated elapsed time measurement**

* Restart and stop of the stopwatch can be repeated by pressing Button A.

Split time measurement

* Measurement and release of split time can be repeated by pressing Button B.

* If the time measured reaches 120 minutes while the split time is being displayed, the stopwatch automatically stops counting and releases the split time display, showing "40' 00" 00." Before starting the next measurement, make sure to reset the stopwatch by pressing Button B.

Measurement of two competitors

DEMONSTRATION FUNCTION OF THE STOPWATCH HAND MOVEMENT

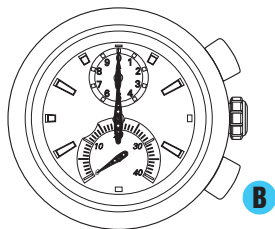
- The demonstration function allows you to view the movement of the four STOPWATCH hands.
- Each of the four STOPWATCH hands demonstrates high-speed movements and when the demonstration is finished, they return to the original position.

How to view the demonstration

- Reset the stopwatch.

* Refer to "HOW TO USE THE STOPWATCH" section of this manual.

- Press Button B for 2 seconds or longer.



* After approximately 3 seconds, the demonstration finishes, and the stopwatch is reset for the next use.

* If either Button A or B is pressed during a demonstration, the demonstration will be stopped and the stopwatch will be reset.

TACHYMETER (for models with tachymeter scale on the dial)

To measure the hourly average speed of a vehicle

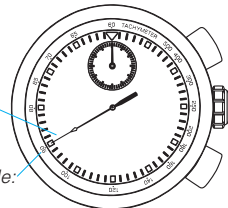
Ex. 1

- Use the stopwatch to determine how many seconds it takes to go 1 km or 1 mile.
- Tachymeter scale indicated by STOPWATCH second hand gives the average speed per hour.

STOPWATCH
second hand:
40 seconds

Tachymeter scale:
"90"

"90" (tachymeter scale figure) x 1 (km or mile)
= 90 km/h or mph



- Tachymeter scale can be used only when the time required is less than 60 seconds.

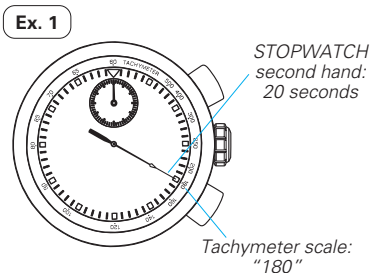
Ex. 2: If the measuring distance is extended to 2 km or miles or shortened to 0.5 km or miles and STOPWATCH second hand indicates "90" on tachymeter scale:

"90" (tachymeter scale figure) x 2 (km or mile) = 180 km/h or mph

"90" (tachymeter scale figure) x 0.5 (km or mile) = 45 km/h or mph

To measure the hourly rate of operation

- 1 Use the stopwatch to measure the time required to complete 1 job.
- 2 Tachymeter scale indicated by STOPWATCH second hand gives the average number of jobs accomplished per hour.



"180" (tachymeter scale figure) x 1 job
= 180 jobs/hour

Ex. 2: If 15 jobs are completed in 20 seconds:

"180" (tachymeter scale figure) x 15 jobs = 2700 jobs/hour

TELEMETER (for models with telemeter scale on the dial)

- The telemeter can provide a rough indication of the distance to the source of light and sound.
- The telemeter indicates the distance from your location to an object that emits both light and sound. For example, it can indicate the distance to the place where lightning struck by measuring the time elapsed after you see a flash of lightning until you hear the sound.
- A flash of lightning reaches you almost immediately while the sound travels to you at a speed of 0.33 km/second. The distance to the source of the light and sound can be calculated on the basis of this difference.
- The telemeter scale is so graduated that the sound travels at a speed of 1 km in 3 seconds.*

* Under the condition of temperature of 20 °C (68 °F).



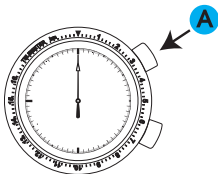
The telemeter provides only a rough indication of the distance to the place where lightning struck, and therefore, the indication cannot be used as the guideline to avoid the danger of lightning. It should also be noted that the speed of the sound differs depending on the temperature of the atmosphere where it travels.

HOW TO USE THE TELEMETER

Before beginning, check that the stopwatch has been reset.

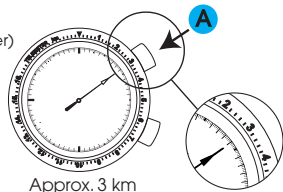
START

(Flash of light)



STOP

(Crash of thunder)



- 1 Press button A to start the stopwatch as soon as you see the light.
- 2 When you hear the sound, press button A to stop the stopwatch.
- 3 Read the telemeter scale that the stopwatch second hand points to.

Please note that the stopwatch second hand moves in 1-second increments and does not always point exactly to the graduations of the telemeter scale. The telemeter scale can be used only when the measured time is less than 60 seconds.

BATTERY CHANGE

3
Years

The miniature battery which powers your watch should last approximately 3 years. However, because the battery is inserted at the factory to check the function and performance of the watch, its actual life once in your possession may be less than the specified period. When the battery expires, be sure to replace it as soon as possible to prevent any malfunction. For battery replacement, we recommend that you contact an AUTHORIZED SEIKO DEALER and request SEIKO SR927W battery.

- * If the stopwatch is used for more than 2 hours a day, the battery life may be less than the specified period.
- * After the battery is replaced with a new one, set the time/calendar and adjust the stopwatch hand position.

● Battery life indicator

When the battery nears its end, the small second hand moves at two-second intervals instead of normal one-second intervals. In that case, have the battery replaced with a new one as soon as possible.

- * The watch remains accurate while the small second hand is moving at two-second intervals.

WARNING

- Do not remove the battery from the watch.
- If it is necessary to take out the battery, keep it out of the reach of children. If a child swallows it, consult a doctor immediately.

CAUTION

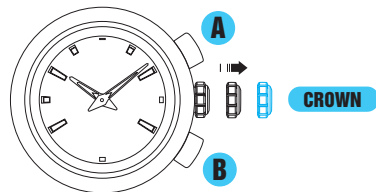
- Never short-circuit, heat or otherwise tamper with the battery, and never expose it to fire. The battery may burst, become very hot or catch fire.
- The battery is not rechargeable. Never attempt to recharge it, as this may cause battery leakage or damage to the battery.

NECESSARY PROCEDURE AFTER BATTERY CHANGE

After the battery is replaced with a new one, or when an abnormal display appears, follow the procedures below to reset the built-in IC. The watch will resume its normal operation.

<HOW TO RESET THE IC>

1. Pull out the crown to the second click.
2. Press Button A and B at the same time.
3. Push the crown back in to the normal position and check if the hands move as normal.



* Resetting the IC will initialize the watch. Before starting to use the watch, it will be necessary to set the time and adjust the STOPWATCH hands to the "0" position. Refer to "TIME AND CALENDAR SETTING AND STOPWATCH HAND POSITION ADJUSTMENT" section of this manual.

TROUBLESHOOTING

Trouble	Possible causes
The watch stops operating.	The battery has run down.
The small second hand moves at two-second intervals.	The battery nears its end.
The watch temporarily gains or loses time.	The watch has been left or worn in extremely high or low temperatures.
	The watch has been left close to an object with a strong magnetic field.
	You drop the watch, hit it against a hard surface, or wear it while playing active sports. The watch is exposed to strong vibrations.
The STOPWATCH hands do not return to the "0" position when the stopwatch is reset.	The watch has been affected by magnetism or exposed to strong shocks or vibrations.
The inner surface of the glass is clouded.	Moisture has entered the watch because the gasket has deteriorated.
The date changes at 12 o'clock noon.	AM/PM is not properly set.

Solutions
Have the battery replaced with a new one immediately by the retailer from whom the watch was purchased.
Return the watch to a normal temperature so that it works accurately as usual, and then reset the time. The watch has been adjusted so that it works accurately when it is worn on your wrist under a normal temperature range between 5 °C and 35 °C.
Correct this condition by moving and keeping the watch away from the magnetic source. If this action does not correct the condition, contact the retailer from whom the watch was purchased.
Reset the time. If the watch does not return to its normal accuracy after resetting the time, contact the retailer from whom the watch was purchased.
Reset the stopwatch hands to the "0" position. Follow the procedure in "TIME AND CALENDAR SETTING AND STOPWATCH HAND POSITION ADJUSTMENT."
Contact the retailer from whom the watch was purchased.
Advance the hour hands for 12 hours to correctly set the time and date.

* In the event of any other problem, please contact the retailer from whom the watch was purchased.

SPECIFICATIONS

- | | | |
|---|---------------------------------------|---|
| 1 | Frequency of crystal oscillator | 32,768 Hz (Hz = Hertz ... Cycles per second) |
| 2 | Loss/gain (monthly rate) | ± 15 seconds at normal temperature range (5 °C ~ 35 °C) |
| 3 | Operational temperature range | -10 °C ~ +60 °C |
| 4 | Driving system | Step motor, 4 pieces |
| 5 | Display system | |
| | Time/calendar | Hour, minute and small second hands
Date is displayed in numerals. |
| | Stopwatch | STOPWATCH 1/100-second hand (0.1 second/ 360 degrees)
STOPWATCH 1/10-second hand (1 second/ 360 degrees)
STOPWATCH second hand (60 seconds/ 360 degrees)
STOPWATCH minute hand (40 minutes/ 240 degrees) |
| 6 | Battery | SEIKO SR927W, 1 piece |
| 7 | Battery life | Approximately 3 years
If the stopwatch is used for longer than 2 hours a day, the battery life may be shorter than the specified period. |
| 8 | Battery life indicator | |
| 9 | IC (Integrated Circuit) | C-MOS-IC, 1 piece |

* *The specifications are subject to change without prior notice for product improvements.*

Free Manuals Download Website

<http://myh66.com>

<http://usermanuals.us>

<http://www.somanuals.com>

<http://www.4manuals.cc>

<http://www.manual-lib.com>

<http://www.404manual.com>

<http://www.luxmanual.com>

<http://aubethermostatmanual.com>

Golf course search by state

<http://golfingnear.com>

Email search by domain

<http://emailbydomain.com>

Auto manuals search

<http://auto.somanuals.com>

TV manuals search

<http://tv.somanuals.com>