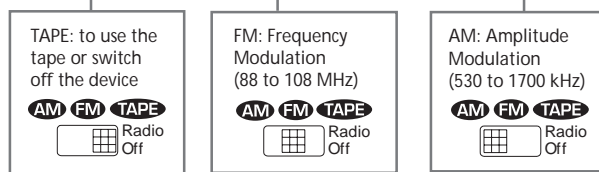
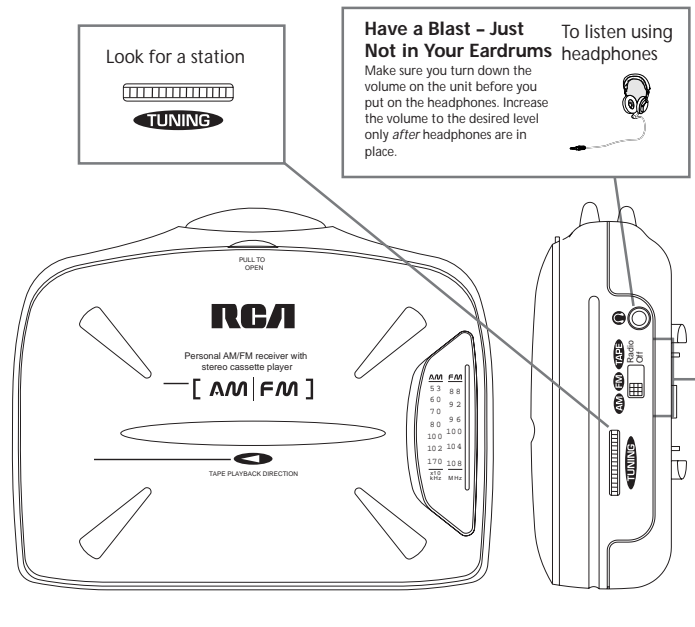
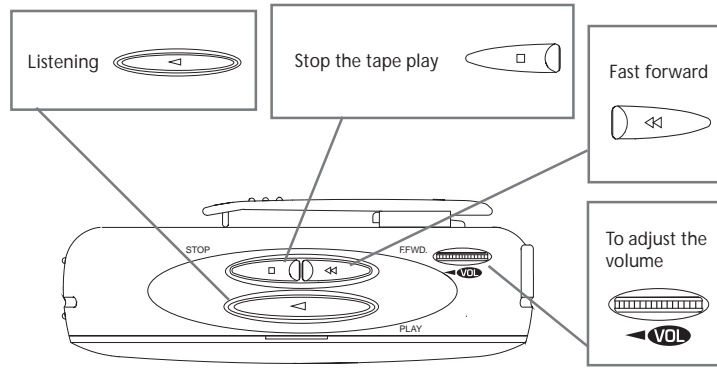
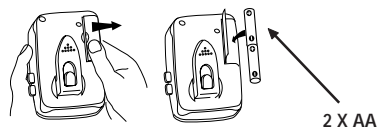


Personal Radio Cassette Player



Power Supply

Fitting of the Batteries:

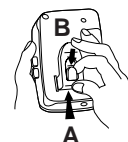


Please respect the environment! Before throwing any batteries away, consult your distributor who may be able to take them back for specific recycling.

Transporting the Device

You can carry the device on your belt using the clip.

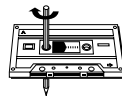
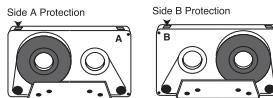
Remove the clip by slightly lifting latch (B) and pushing in the direction of arrow (A).



More Information ...

Cassettes

- To protect your recordings on one or both sides of your cassette, remove the tab situated on the top of the cassette. If you later wish to record over this side, affix a piece of adhesive tape over the hole.
- Any deterioration in the sound quality may be due to dust or dirt on the parts that are in contact with the magnetic band (magnetic heads, pinch roller and capstan); in this case, open the cassette door and clean them with a cotton bud dipped in alcohol.
- Quit Slacking- A little bit of slack in your tapes can cause scratches on the tape, or worse yet, the tape could break. If you notice some slack in the tape, use a pencil to tighten it up before you insert it.



Maintenance

- Clean the set with a soft cloth or a dampen chamois leather. Never use solvents, as it may damage the unit.

Recommendations

- Avoid continuous high volume setting when using earphones! Your normal hearing ability may otherwise be seriously affected.
- For safety reasons, this unit should be only opened by qualified personnel.
- Take care not to splash liquid on this equipment or expose it to excessive temperatures.
- If the equipment is not in use for long periods, we recommend that you remove the batteries.
- To prevent personal injury, do not reverse any battery and do not mix battery types.

In accordance with the ratings plate, this system complies with current standards concerning safety and electromagnetic compatibility. The descriptions and characteristics given in this document are given as a general indication and not as a guarantee. In order to provide the highest quality product possible, we reserve the right to make any improvement or modification without prior notice.

FCC Information & Warranty

Federal Communications Commission (FCC) Information

This device complies with Part 15 of the FCC Rules. Operation is subject to the following two conditions: (1) This device may not cause harmful interference, and (2) This device must accept any interference received, including interference that may cause undesired operation.

In accordance with FCC requirements, changes or modifications not expressly approved by Thomson Consumer Electronics could void the user's authority to operate this product.

For US:

What your warranty covers:

- Any defect in materials or workmanship.

For how long after your purchase:

- One year.

(The warranty period for rental units begins with the first rental or 45 days from date of shipment to the rental firm, whichever comes first.)

What we will do:

- Provide you with a new, or at our option, a refurbished unit.
- The exchange unit is under warranty for the remainder of the original product's warranty period.

How to make a warranty claim:

- Properly pack your unit. Include any cables, etc., which were originally provided with the product. We recommend using the original carton and packing materials.
- Include in the package evidence of purchase date such as the bill of sale. Also print your name and address and a description of the defect. Send standard UPS or its equivalent to:

Thomson Consumer Electronics, Inc.
Product Exchange Center
11721 B Alameda Ave,
Socorro, TX79927

- Pay any charges billed to you by the Exchange Center for service not covered by the warranty.
- A new or refurbished unit will be shipped to you prepaid freight.

What your warranty does not cover:

- Customer instruction. (Your Owner's Manual provides information regarding operating instructions and user controls. For additional information, ask your dealer.)
- Installation and set-up service adjustments.
- Batteries.
- Damage from misuse or neglect.
- Products which have been modified or incorporated into other products.
- Products purchased or serviced outside the USA.
- Acts of God, such as but not limited to lightning damage.

Product Registration:

- Please complete and mail the Product Registration Card packed with your unit. It will make it easier to contact you should it ever be necessary. The return of the card is not required for warranty coverage.

How state law relates to this warranty:

- This warranty gives you specific legal rights, and you may have other rights which vary from state to state.

If you purchased your product outside the USA:

- This warranty does not apply. Contact your dealer for warranty information.

Free Manuals Download Website

<http://myh66.com>

<http://usermanuals.us>

<http://www.somanuals.com>

<http://www.4manuals.cc>

<http://www.manual-lib.com>

<http://www.404manual.com>

<http://www.luxmanual.com>

<http://aubethermostatmanual.com>

Golf course search by state

<http://golfingnear.com>

Email search by domain

<http://emailbydomain.com>

Auto manuals search

<http://auto.somanuals.com>

TV manuals search

<http://tv.somanuals.com>