

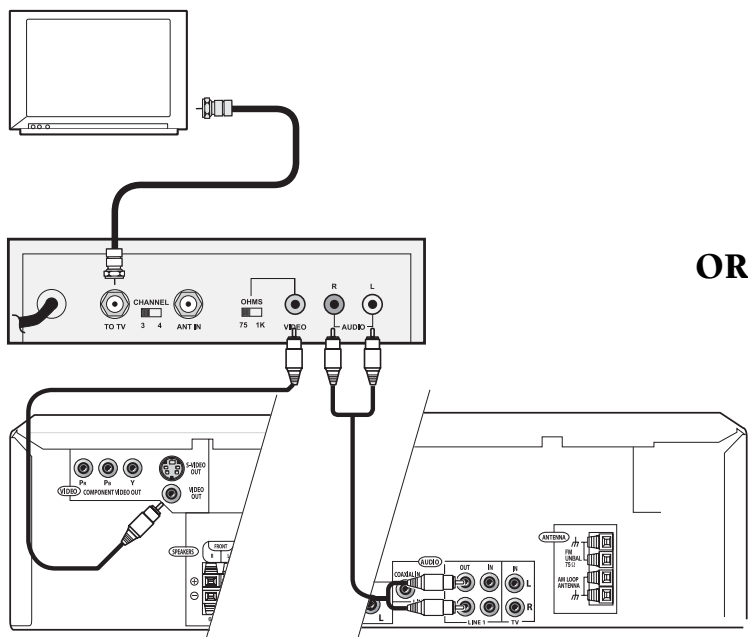
5 DVD Home Theater in a Box with Wireless Rear Speakers

Refer to your Owner's Manual for complete instructions.

Making Connections

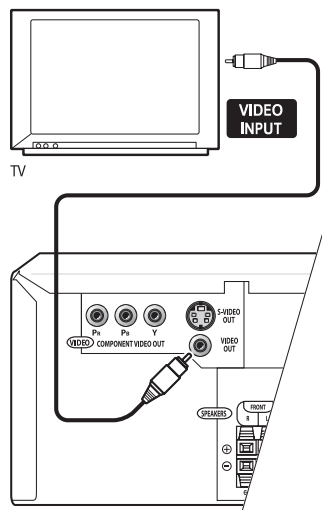
BASIC

Connecting to Your TV Using an RF Modulator (not supplied)



GOOD

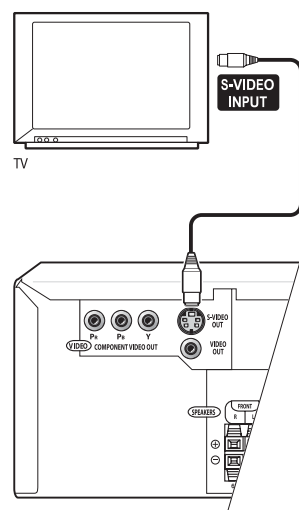
Connecting the Video Output to Your TV



Use the supplied video cable to connect the **VIDEO OUT** jack to a video input on your TV.

BETTER

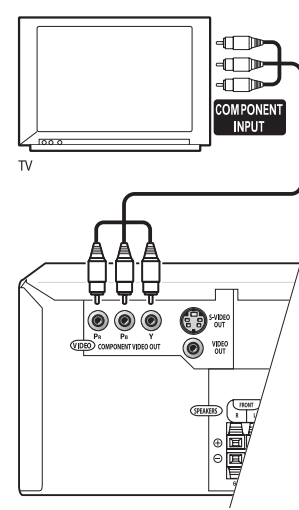
Connecting the S-video Output to Your TV



Use an S-video cable (not supplied) to connect the **S-VIDEO OUT** to an S-video input on your TV.

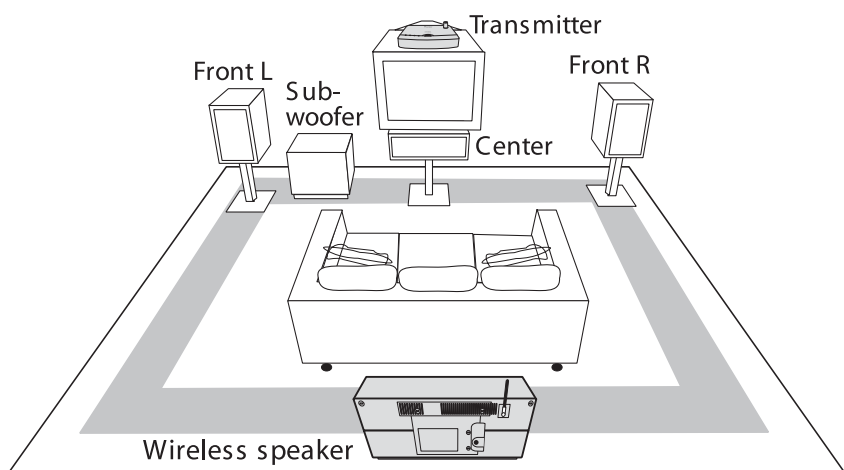
BEST

Connecting the Component Video Output to Your TV



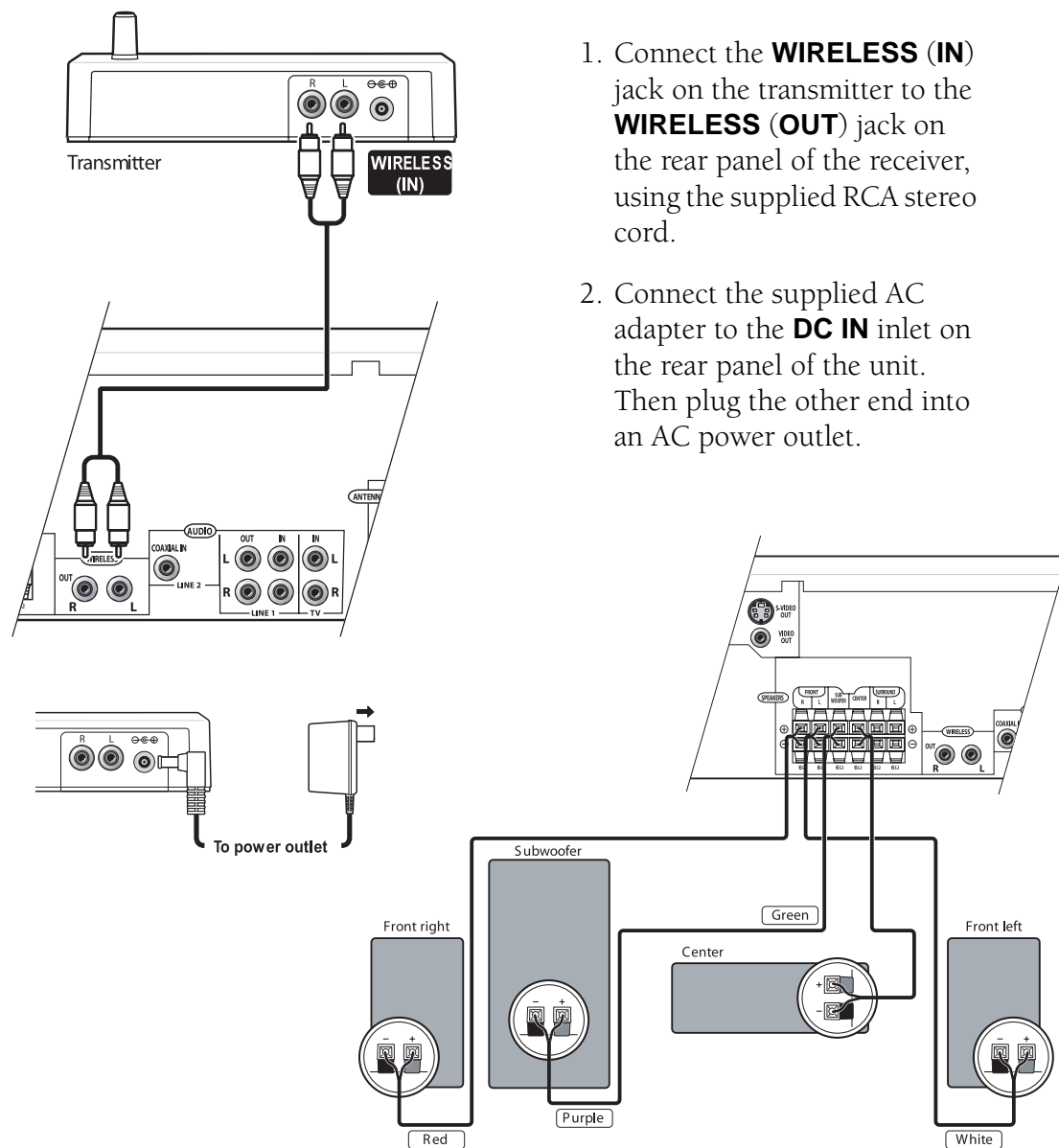
Use a component video cable (not supplied) to connect the **COMPONENT VIDEO OUT** to a set of component inputs on your TV.

Placing the Speakers

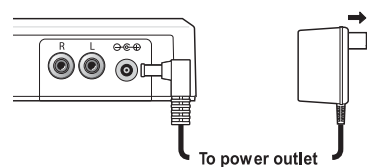


- Place the center speaker directly above or below the TV so that the sound of the center channel is localized at the TV.
- Try to place all the speakers at an equal distance from the listening position.

Connecting the Speakers

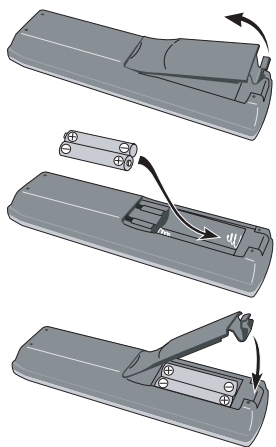


1. Connect the **WIRELESS (IN)** jack on the transmitter to the **WIRELESS (OUT)** jack on the rear panel of the receiver, using the supplied RCA stereo cord.
2. Connect the supplied AC adapter to the **DC IN** inlet on the rear panel of the unit. Then plug the other end into an AC power outlet.



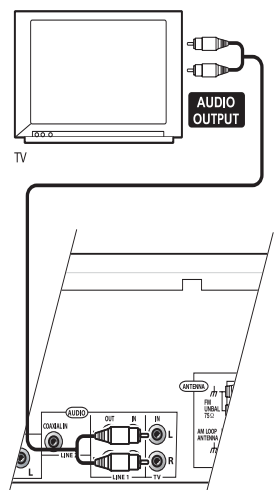
REMOTE CONTROL

Installing Batteries



The remote requires two AA batteries (not supplied).

Listening to TV Audio Through the System



Connect a stereo audio cable (not supplied) from the audio outputs of your TV to the **TV IN** jacks on this system.

- Make sure you disconnect power from all components.
- The wireless mode is the default setting.
- Connect each speaker using the color-coded speaker cable. Match them to the colored labels above the speaker terminals.
- Do not connect any of the supplied speakers to any other amplifier. This may result in malfunction or fire.

Free Manuals Download Website

<http://myh66.com>

<http://usermanuals.us>

<http://www.somanuals.com>

<http://www.4manuals.cc>

<http://www.manual-lib.com>

<http://www.404manual.com>

<http://www.luxmanual.com>

<http://aubethermostatmanual.com>

Golf course search by state

<http://golfingnear.com>

Email search by domain

<http://emailbydomain.com>

Auto manuals search

<http://auto.somanuals.com>

TV manuals search

<http://tv.somanuals.com>