

Pill Box Timer

63-1516



Your Pill Box Timer is the ideal item for helping you stay on track when taking your medication. You can rely on the Pill Box Timer to remind you when it's time to take the next dosage and keep track of the amount you've taken.



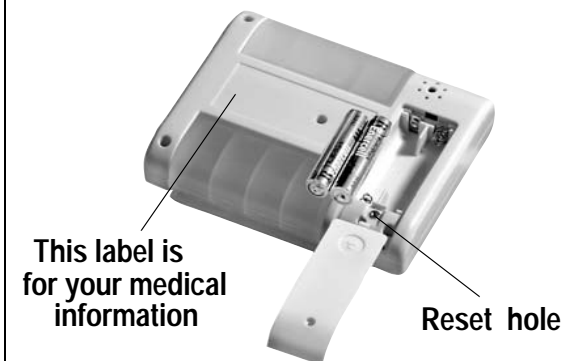
Installing the Batteries

You will need...

Two AAA batteries (not included)
Phillips screwdriver (not included)

1. Use a Phillips screwdriver to loosen the screw on the battery compartment and remove the cover.
2. Insert two AAA batteries in the battery compartment, matching the polarity symbols (+ and -) marked inside.
3. Replace the cover and secure it with the screw.

Note: When appears, replace the battery and then reset the timer.



Setting the Time

1. Repeatedly press **MODE** until time mode appears.
2. Press and hold down **SET** to enter the setting mode. **12HR** or **24HR** appears.
3. Press **HR/UP** or **MIN/DOWN** to select the 12-hour or 24-hour time mode and press **SET**. The time flashes.
4. Press **HR/UP** to change the hour and **MIN/DOWN** to change the minute, and then press **SET**. The year flashes.
5. Repeat Step 4 to set the year. The month and date flashes.
6. Repeatedly press **HR/UP** or **MIN/DOWN** to select the date format: **2M 1D** or **1D 2M**.
7. Repeatedly press **HR/UP** or **MIN/DOWN** to select the month and press **SET**. The date flashes.
8. Repeat Step 7 to set the date.

If you select 12HR, **PM** will appear in the time mode when you go past 12.

Note: If you do not select a button for about 30 seconds, the timer will return to time mode.

Countdown Timer

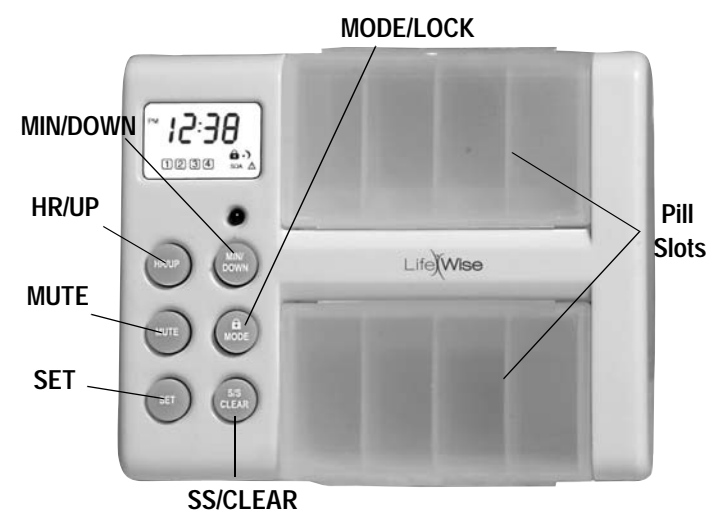
Setting the Countdown Timer

1. Repeatedly press **MODE** to enter the timer mode. The timer has four modes. In each mode, 1, 2, 3 or 4 appears.
2. Hold down **SET** to enter the setting mode. Repeatedly press **HR/UP** or **MIN/DOWN** to set the timer.
3. Press **SET** to confirm your setting.
 - You can set the timer up to 24 hours.
 - You can hold down **SS/CLEAR** to clear your setting in the timer mode.

Using the Timer

You can use the timers separately or at the same time.

1. To start or stop the timers separately, repeatedly press **SS/CLEAR** after you set the first timer. The timer begins running with the coordinating timer mode in the bottom of the display.
2. To start or stop several timers, repeatedly press **SS/CLEAR** after you set all four timers.



NOTE

- When the timer counts down to zero, the alarm will sound for about 30 seconds, while the corresponding timer number flashes. Then, the timer will beep every 15 minutes, while the flashes on the display. To silence the alarm and repeat the countdown again, press **SS/CLEAR** once.
- To stop the alarm, press **SS/CLEAR** twice.

Other Pill Box Timer Features

Night Muting

To mute your timer during your sleep, hold down **MUTE** until the appears on the display. If the times you set are between 11 p.m. and 7 a.m., all the timers will alarm at 7 a.m. To turn mute off, hold down **MUTE** until the icon disappears.

Resetting the Timer

To reset the timer, use a straightened object to press the Reset hole on the back of the timer. All segments will appear on the display.

Locking the Buttons

You can lock the buttons on the timer to protect your settings. Press and hold **MODE** until the timer beeps and appears on the display. To unlock the timer, press and hold **MODE** again until the icon disappears.

Using the Pill Box

Use the pill slots to store your daily medication. The label on the back can be used for recording your name, emergency contact and medical information.



Using the "See Doctor" Alarm

You can set this alarm to remind you of an upcoming doctor's appointment.

1. Repeatedly press **MODE** until - - - **SDA** appears on the display.
2. Press and hold **SET** until the year flashes. Press **HR/UP** or **MIN/DOWN** to select the year and press **SET**. The month and date appear, while the month flashes.
3. Repeatedly press **HR/UP** or **MIN/DOWN** to select the month, and then press **SET**. The date flashes. Press **HR/UP** or **MIN/DOWN** to select the date.
4. Press **SET** after you finish. The remaining number of days until the date of your appointment and **SDA** appear on the display. Then, **SDA** appears on the display of the time mode.
 - The timer will alarm at 9 a.m. for about 30 seconds until you press any button and **SDA** flashes continuously in the display.
 - You can press **S/S CLEAR** to clear your alarm setting in the setting mode. The maximum length of time you can set for the countdown is two years.

Notes:

- If you do not press a button for about 30 seconds, the timer will return to time mode. The new setting will not be saved.
- If your appointment is today's date, set the alarm before 9 a.m. Otherwise, the See Doctor Alarm will not enable.

Care & Maintenance

- Keep the timer dry. If it gets wet, wipe it dry immediately.
- Use and store it in room temperature environments only.
- Handle the product carefully. Do not drop it.
- Keep the timer away from dust and dirt. Wipe it with a damp cloth occasionally to keep it looking new.
- Modifying or tampering with the timer's internal components can cause a malfunction and invalidate its warranty. If your timer is not operating properly, take it to your local RadioShack store for assistance.

Specifications

Power Source..... Two AAA Batteries
 Operating Temperature..... 32°F to 122°F
 Alarm Frequency..... 1 KHz
 Battery Life One Year (approximately)

Limited One-Year Warranty

This product is warranted by RadioShack against manufacturing defects in material and workmanship under normal use for [one (1) year] from the date of purchase from RadioShack company-owned stores and authorized RadioShack franchisees and dealers. EXCEPT AS PROVIDED HEREIN, RadioShack MAKES NO EXPRESS WARRANTIES AND ANY IMPLIED WARRANTIES, INCLUDING THOSE OF MERCHANTABILITY AND FITNESS FOR A PARTICULAR PURPOSE, ARE LIMITED IN DURATION TO THE DURATION OF THE WRITTEN LIMITED WARRANTIES CONTAINED HEREIN. EXCEPT AS PROVIDED HEREIN, RadioShack SHALL HAVE NO LIABILITY OR RESPONSIBILITY TO CUSTOMER OR ANY OTHER PERSON OR ENTITY WITH RESPECT TO ANY LIABILITY, LOSS OR DAMAGE CAUSED DIRECTLY OR INDIRECTLY BY USE OR PERFORMANCE OF THE PRODUCT OR ARISING OUT OF ANY BREACH OF THIS WARRANTY, INCLUDING, BUT NOT LIMITED TO, ANY DAMAGES RESULTING FROM INCONVENIENCE, LOSS OF TIME, DATA, PROPERTY, REVENUE, OR PROFIT OR ANY INDIRECT, SPECIAL, INCIDENTAL, OR CONSEQUENTIAL DAMAGES, EVEN IF RadioShack HAS BEEN ADVISED OF THE POSSIBILITY OF SUCH DAMAGES. Some states do not allow limitations on how long an implied warranty lasts or the exclusion or limitation of incidental or consequential damages, so the above limitations or exclusions may not apply to you. In the event of a product defect during the warranty period, take the product and the RadioShack sales receipt as proof of purchase date to any RadioShack store. RadioShack will, at its option, unless otherwise provided by law: (a) correct the defect by product repair without charge for parts and labor; (b) replace the product with one of the same or similar design; or (c) refund the purchase price. All replaced parts and products, and products on which a refund is made, become the property of RadioShack. New or reconditioned parts and products may be used in the performance of warranty service. Repaired or replaced parts and products are warranted for the remainder of the original warranty period. You will be charged for repair or replacement of the product made after the expiration of the warranty period. This warranty does not cover: (a) damage or failure caused by or attributable to acts of God, abuse, accident, misuse, improper or abnormal usage, failure to follow instructions, improper installation or maintenance, alteration, lightning or other incidence of excess voltage or current; (b) any repairs other than those provided by a RadioShack Authorized Service Facility; (c) consumables such as fuses or batteries; (d) cosmetic damage; (e) transportation, shipping or insurance costs; or (f) costs of product removal, installation, set-up service adjustment or reinstallation. This warranty gives you specific legal rights, and you may also have other rights which vary from state to state. RadioShack Customer Relations, 200 Taylor Street, 6th Floor, Fort Worth, TX 76102

©2003. RadioShack Corporation.
 All Rights Reserved.
 RadioShack and RadioShack.com are trademarks used by RadioShack Corporation.

63-1516
 Printed in China
 07A03

Free Manuals Download Website

<http://myh66.com>

<http://usermanuals.us>

<http://www.somanuals.com>

<http://www.4manuals.cc>

<http://www.manual-lib.com>

<http://www.404manual.com>

<http://www.luxmanual.com>

<http://aubethermostatmanual.com>

Golf course search by state

<http://golfingnear.com>

Email search by domain

<http://emailbydomain.com>

Auto manuals search

<http://auto.somanuals.com>

TV manuals search

<http://tv.somanuals.com>