

# Digital Wind Gauge

63-1119

**Wind Direction Icons** – Indicate the direction from which the wind is blowing.

**Auto Power Save** – Automatically turns off the wind gauge after about two minutes.

**Wind Speed Indicator** – Shows wind speed in miles per hour.

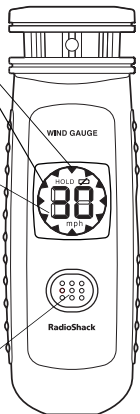
**Data Hold Icon** – Shows the wind gauge's last measurement or indicates data acquisition.

**LED Backlight** – Automatically turns on when the sense button is pressed.

**Low Battery Icon** – Indicates when it is time to replace the battery.

**Sense Button** — Press to activate the wind gauge.

**Flashlight** – Has a flashlight.



## ! IMPORTANT !

If an icon appears at the end of a paragraph, go to the box on that page with the corresponding icon for pertinent information.



— Warning



! — Important



— Caution



— Hint



— Note

## OWNER'S MANUAL

Please read before using this equipment.



**RadioShack**®


www.radioshack.com™

© 2003 RadioShack Corporation.  
All Rights Reserved.

RadioShack and RadioShack.com are  
trademarks used by RadioShack Corporation.

Thank you for buying the RadioShack Digital Wind Gauge. This handy wind gauge lets you measure wind speed and direction right in the palm of your hand. Results are easy to read on the built-in display. Just press a button and take a measurement. The wind gauge also includes a flashlight for convenience.

## INSTALLING THE BATTERIES

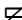


Your wind gauge uses four AAA size batteries (not supplied) for power. 

1. Slide the battery compartment cover in the direction of the arrow to remove it.
2. Place the batteries in the compartment as indicated by the polarity symbols (+ and -) marked inside.

### CAUTION

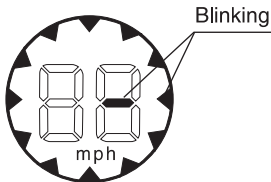
Use only fresh batteries of the required size and recommended type. Do not mix old and new batteries, different types of batteries (standard, alkaline, or rechargeable), or rechargeable batteries of different capacities.

### 3. Replace the cover.

When  flashes or the wind gauge stops operating properly, replace the batteries.  

## READING MEASUREMENTS

The following display appears each time you press the sense button to take a new measurement.



Your wind gauge measures the current wind speed and direction, then displays the wind speed in miles per hour. Wind direction is indicated by one of the 12 icons that show the direction from which the wind is currently blowing. For

### **WARNING**

Dispose of old batteries promptly and properly. Do not burn or bury them.

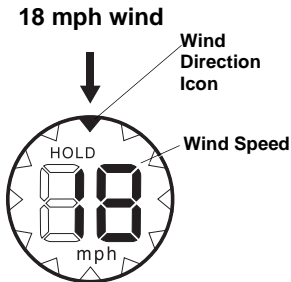
### **CAUTION**

If you do not plan to use the wind gauge for a month or more, remove the batteries. Batteries can leak chemicals that can destroy electronic parts.

NOTE


- Measurements are most accurate when the wind is blowing at least 6 MPH and less than 30 MPH, and is not variable or gusty.
- If the wind speed is below 6 MPH, **L** appears on the display to indicate the wind speed is too low.
- If the wind speed is 31-35 miles per hour, the wind speed blinks and the value shown may not be accurate. Above 35 miles per hour, **H** appears on the display to indicate the wind speed is too high.

example, when an 18-mile per hour wind is blowing directly into your face, the topmost wind direction icon darkens and the reading **18** appears on the display.



The wind speed and wind direction are updated continuously until the gauge is manually stopped or until it times out (90 seconds). The wind direction icon disappears if no valid direction is received in three seconds.

# OPERATION

1. Hold the wind gauge upright so you can see the display. Lift it above your head and hold it steady.
2. Press the sense button. While the wind gauge measures the current wind conditions, the 12 wind direction icons alternately flash until the wind direction is computed. The wind speed is continuously updated, and **HOLD** blinks to indicate measurement is taking place. 
3. After about three seconds, one of the wind direction icons darkens to show the current wind direction. It is continuously updated unless no valid data is received for about three seconds.

## **NOTE**

- If the gauge measures for more than 90 seconds, or if you hold down the sense button for more than 90 seconds, all direction icons blink for about 10 seconds. The last measurement is shown on the display for a few seconds. then the gauge turns off.
- The LED backlight turns on when you press the sense button, and turns off after stopping the measurement for 10 seconds.

4. Press the sense button again to stop measuring and hold the last result.

## USING POWER SAVE

If you do not press the sense button within two minutes after you turn on the wind gauge, it automatically enters power save mode and turns off. ↙

If the display is off, press the sense button again to turn on the wind gauge.

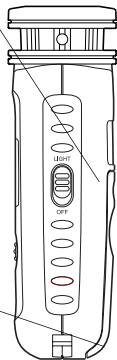
### ↙ NOTE ↙

The wind gauge does not retain the last measurement when it goes into power save mode.

## USING THE FLASHLIGHT

**LIGHT/OFF —**  
Slide **LIGHT/OFF**  
to **LIGHT** to turn  
on the flashlight.  
Slide **LIGHT/OFF**  
to **OFF** to turn off  
the flashlight.  
There is no power  
save or automatic  
off for the

**Neck/Hand Strap  
Hole —** Attach a  
neck or hand strap  
(not supplied) for  
easy carrying.



☞ **NOTE** ☞

### **Care**

Keep the wind gauge dry; if it gets wet, wipe it dry immediately. Use and store the wind gauge only in normal temperature environments. Handle the wind gauge carefully; do not drop it. Keep the wind gauge away from dust and dirt, and wipe it with a damp cloth occasionally to keep it looking new.

If your wind gauge is not performing as it should, take it to your local RadioShack store for assistance. Modifying or tampering with the wind gauge's internal components can cause a malfunction and might invalidate its warranty.

# SPECIFICATIONS

Power Supply .....6.0V DC (4 AAA Alkaline Batteries)

Operating Temperature ..... 14°F to 122°F (-10°C to 50°C)

Dimensions ..... 5<sup>1</sup>/<sub>16</sub> × 1<sup>9</sup>/<sub>16</sub> × 1<sup>9</sup>/<sub>16</sub> Inches  
(128 × 40 × 40 mm)

Weight .....3.5 oz. (100 g)

Specifications are typical; individual units might vary.  
Specifications are subject to change and improvement  
without notice.

## Limited One-Year Warranty

This product is warranted by RadioShack against manufacturing defects in material and workmanship under normal use for one (1) year from the date of purchase from RadioShack company-owned stores and authorized RadioShack franchisees and dealers. EXCEPT AS PROVIDED HEREIN, RadioShack MAKES NO EXPRESS WARRANTIES AND ANY IMPLIED WARRANTIES, INCLUDING THOSE OF MERCHANTABILITY AND FITNESS FOR A PARTICULAR PURPOSE, ARE LIMITED IN DURATION TO THE DURATION OF THE WRITTEN LIMITED WARRANTIES CONTAINED HEREIN. EXCEPT AS PROVIDED HEREIN, RadioShack SHALL HAVE NO LIABILITY OR RESPONSIBILITY TO CUSTOMER OR ANY OTHER PERSON OR ENTITY WITH RESPECT TO ANY LIABILITY, LOSS OR DAMAGE CAUSED DIRECTLY OR INDIRECTLY BY USE OR PERFORMANCE OF THE PRODUCT OR ARISING OUT OF ANY BREACH OF THIS WARRANTY, INCLUDING, BUT NOT LIMITED TO, ANY DAMAGES RESULTING FROM INCONVENIENCE, LOSS OF TIME, DATA, PROPERTY, REVENUE, OR PROFIT OR ANY INDIRECT, SPECIAL, INCIDENTAL, OR CONSEQUENTIAL DAMAGES, EVEN IF RadioShack HAS BEEN ADVISED OF THE POSSIBILITY OF SUCH DAMAGES.

Some states do not allow limitations on how long an implied warranty lasts or the exclusion or limitation of incidental or consequential damages, so the above limitations or exclusions may not apply to you.

In the event of a product defect during the warranty period, take the product and the RadioShack sales receipt as proof of purchase date to any RadioShack store. RadioShack will, at its option, unless otherwise provided by law: (a) correct the defect by product repair without charge for parts and labor; (b) replace the product with one of the same or similar design; or (c) refund the purchase price. All replaced parts and products, and products on which a refund is made, become the property of RadioShack. New or reconditioned parts and products may be used in the performance of warranty service. Repaired or replaced parts and products are warranted for the remainder of the original warranty period. You will be charged for repair or replacement of the product made after the expiration of the warranty period.

This warranty does not cover: (a) damage or failure caused by or attributable to acts of God, abuse, accident, misuse, improper or abnormal usage, failure to follow instructions, improper installation or maintenance, alteration, lightning or other incidence of excess voltage or current; (b) any repairs other than those provided by a RadioShack Authorized Service Facility; (c) consumables such as fuses or batteries; (d) cosmetic damage; (e) transportation, shipping or insurance costs; or (f) costs of product removal, installation, set-up service adjustment or reinstallation.

This warranty gives you specific legal rights, and you may also have other rights which vary from state to state.

RadioShack Customer Relations, 200 Taylor Street, 6th Floor, Fort Worth, TX 76102

12/99

---

63-1119

AO0123ABA1

01A03

Printed in China



## Free Manuals Download Website

<http://myh66.com>

<http://usermanuals.us>

<http://www.somanuals.com>

<http://www.4manuals.cc>

<http://www.manual-lib.com>

<http://www.404manual.com>

<http://www.luxmanual.com>

<http://aubethermostatmanual.com>

Golf course search by state

<http://golfingnear.com>

Email search by domain

<http://emailbydomain.com>

Auto manuals search

<http://auto.somanuals.com>

TV manuals search

<http://tv.somanuals.com>