



The Pool and Spa Heating ExpertsSM

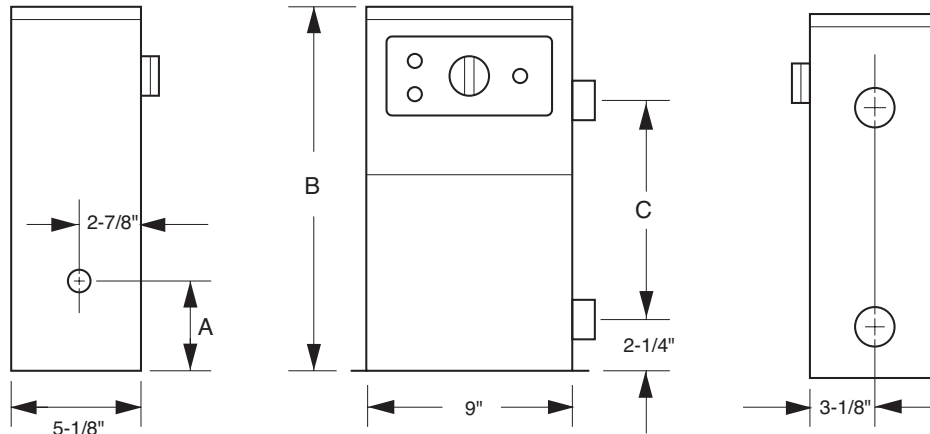


Raypak SpaPak 552 & 1102

Electric Spa Heater

Technical Data

Raypak Electric Spa Heater



LISTED
774T



SPA
HEATER

MODEL	BTUH (INPUT)	A	B	C	Amp Draw	GFCI Size
552	18,767	3-7/8"	16"	8"	23	30
1102	37,534	10-7/8"	23"	15"	46	60



Type
3R

SpaPak 552 and 1102 Standard Features

All models

- Brass Headers**
 Brass headers prevent rust stains from harming your pool or spa's surface, giving you years of trouble-free swimming pleasure. They also allow for a corrosion free connection to your spa plumbing, making any future servicing a snap.
- Copper Water Vessel**
 The Raypak Electric Spa heater has a completely non-ferrous waterway. The cast brass headers are connected with an all copper water tank. This ensures that the spa water only comes in contact with a rust free environment. This helps keeps your spa rust stain free.
- 1-1/2" Water Connections**
 Every Raypak Electric Spa heater comes standard with 1-1/2" NPT male connections to make your installation secure and effortless. No other special connections are required, such as current collectors or heat sinks.
- Heating Element**
 The heart of any electric heater is the heating element. The Raypak Electric Spa heater comes with a robust, incoloy sheathed heating element. The top of the element is 3/16" stainless steel, again, ensuring a rust free environment.
- Contactors**
 Raypak Electric Spa heaters use commercial grade components. Take one look at the heavy duty power contactor and you know this heater is built to last.
- Safety**
 Inside every Raypak Electric Spa heater is a built-in device to prevent overheating. In the event the heater is energized when the water flow is insufficient, a resettable high limit will prevent the heater from operating in an unsafe condition.
- 240v Operation**
 Both of the Raypak Electric Spa heaters operate with 240v single phase power. The model 552 draws about 23 amps @240v and the model 1102 draws about 46 amps @240v.
- Energy-Efficient**
 Energy-smart Raypak heaters consistently achieve the highest efficiency ratings. They exceed all federal and state standards.

Quality assurance

- ISO 9001**
 We are proud to be an ISO 9001 registered manufacturing plant. It's one more reason why Raypak is number one in the heater industry today.
- End-of-Line Test**
 Every Raypak Electric Spa heater is test-fired before it is put in the carton. This ensures that your heater will work right out of the box and continue to give you years of trouble-free operation.
- UL Listed**
 The Raypak Electric Spa heaters are listed with UL and cUL.

Model	Water Temperature Rise in °F/Hour				
	5°	10°	15°	20°	25°
Gallons of Water					
552	450	225	150	113	95
1102	900	450	300	225	190

*Note: Assumes covered and insulated spa.

In keeping with its policy of continuous progress and product improvement, Raypak reserves the right to make changes without notice



Swimming Pool and Spa Heating Products



6100.10H • 10-01-07

Free Manuals Download Website

<http://myh66.com>

<http://usermanuals.us>

<http://www.somanuals.com>

<http://www.4manuals.cc>

<http://www.manual-lib.com>

<http://www.404manual.com>

<http://www.luxmanual.com>

<http://aubethermostatmanual.com>

Golf course search by state

<http://golfingnear.com>

Email search by domain

<http://emailbydomain.com>

Auto manuals search

<http://auto.somanuals.com>

TV manuals search

<http://tv.somanuals.com>