

LAUNDRY-PAK

Hot Water Supply

For Coin-Operated and Commercial Laundries

Equipment Specifications

Boiler

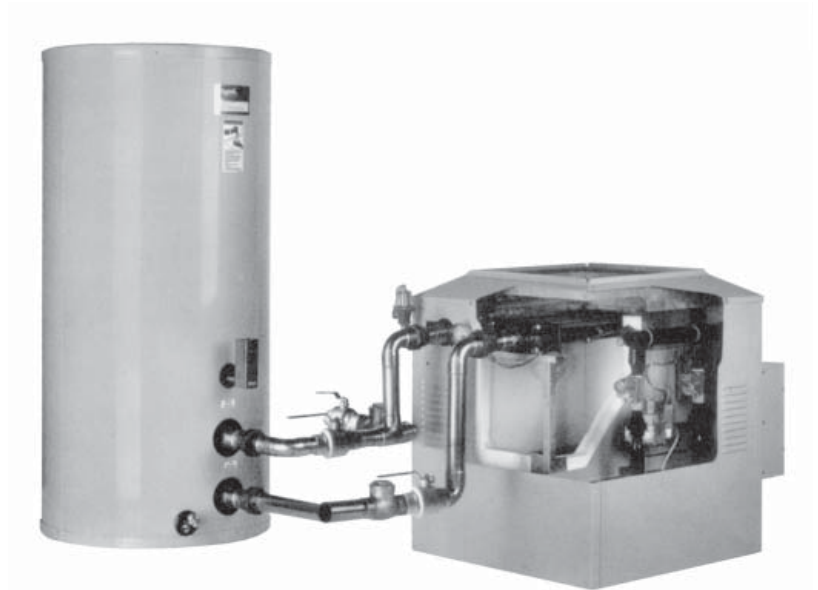
Raypak Type WH Hot Water Heaters
Indoor or Outdoor
Natural gas
On/Off firing
Finned copper tube 2-pass heat exchanger
Bronze Headers
Intermittent electric ignition
125 psi pressure relief valve
Adjustable automatic operating control
Temperature and pressure gauge
Economaster pump time delay

Tank-Optional

Vertical, w/angle iron legs
2-1/2" NPT connections for 235-534 gallons
3" NPT connections for 684-1164 gallons
Custom tanks available up to 2570 gallons
Larger tanks available upon request
Tankstat and thermometer (loose)
125 PSI ASME Code

Pump

Cast-iron body, bronze fitted



Typical Boiler-Tank Arrangement

The Raypak Laundry-Pak is the ideal system for all types of laundries requiring hot water. From the Coin-op through Commercial applications the Laundry-Pak, when properly sized and applied, will provide the operator with the necessary hot water at substantial savings in operating cost, maintenance and service.

Exceptional Reliability

The Raypak design utilizes high velocity water flow through the heat exchanger virtually eliminating the formation of scale and corrosion found in other types of water heaters.

Service and Maintenance Ease

Maintenance and service of the Raypak water heater are made easy through the easy access to controls and heat exchangers. The water heaters were designed to reduce down time necessary to perform these tasks.

Convenience of Installation

The light weight, low mass and options in indoor or outdoor construction makes the Raypak water heater the most versatile source of hot water for your laundry needs.

Suitable for replacement, retrofit and new installations, Raypak is the choice.

Raypak[®]
A Rheem[®] Company

Sizing:

1. Calculate the hot water demand:
Number of machines x gallons per load x number of cycles per hour = GPH required.
2. Enter chart at Temperature Rise find the GPH closest to, but not less than, GPH calculated.
3. Select the water heater, tank and circulator recommended.

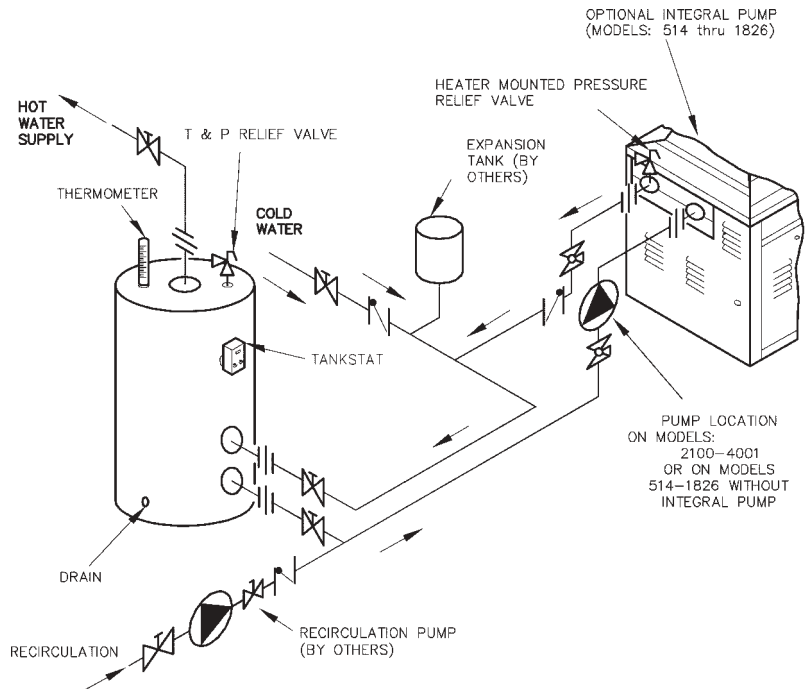
Number Washers	Gal /Cycle	Total GPH /Cycle
_____	x _____	= _____
_____	x _____	= _____
_____	x _____	= _____
_____	x _____	= _____
_____	x _____	= _____
Total GPH		_____
Multiply by # cycle/hour x _____		
TOTAL DEMAND GPH		_____

Selection:

Boiler: W1 - _____
 Tank: _____ gallons

Sample piping diagram showing one water heater and one tank.

For two water heaters and one tank see Drawing 8069.



For complete and detailed piping diagram see Drawing 8054

Type WH Indoor Water Heater				Type WH Outdoor Water Heater				Tank		Pump*	
Boiler Model Number	Temperature Rise			Boiler Model Number	Temperature Rise			Normal Capacity Gallons	Diameter X Length	HP	Feet Head
	80°F	90°F	100°F		80°F	90°F	100°F				
Gallons per Hour				Gallons per Hour							
514	636	565	508	514	636	565	508	235	30 x 80	0.25	7.0
624	779	692	623	624	779	692	623	335	36 x 80	0.33	7.2
724	902	802	722	724	902	802	722				9.3
824	1025	911	820	824	1025	911	820				11.7
962	1195	1062	956	926	1150	1023	920	390	42 x 72	0.75	10.5
1125	1397	1242	1118	1083	1346	1196	1076				16.0
1223	1519	1350	1215	1178	1464	1301	1171				16.2
1336	1661	1476	1328	1287	1599	1421	1279				17.5
1468	1823	1620	1458	1414	1756	1560	1404				18.0
1631	2025	1800	1620	1571	1951	1734	1560				19.0
1826	2268	2016	1815	1758	2184	1941	1747	19.7			
				(2) 926	2300	2046	1840	0.33	10.5		
2100	2609	2319	2087					1.00	16.6		
				(2) 1083	2692	2392	2152	684	54 x 78	0.75	16.0
				(2) 1178	2928	2602	2342			0.75	16.2
2500	3105	2760	2484					803	54 x 90	2.00	23.6
				(2) 1287	3198	2842	2558			0.75	17.5
				(2) 1414	3512	3120	2808			0.75	18.0
3001	3727	3313	2982					922	54 x 102	2.00	24.8
				(2) 1571	3902	3468	3120			0.75	19.0
3500	4348	3865	3479							2.00	25.5
				(2) 1758	4368	3882	3494	1164	60 x 105	0.75	19.7
4001	4970	4418	3976							2.00	26.6

*Based on 5-15 grains per gallon hardness. Feet Head is based on equivalent length of pipe, valve and fittings between water heater and tank placed five (5) feet apart. Raypak, Inc. reserves the right to make product changes or improvements at any time without notice.

Free Manuals Download Website

<http://myh66.com>

<http://usermanuals.us>

<http://www.somanuals.com>

<http://www.4manuals.cc>

<http://www.manual-lib.com>

<http://www.404manual.com>

<http://www.luxmanual.com>

<http://aubethermostatmanual.com>

Golf course search by state

<http://golfingnear.com>

Email search by domain

<http://emailbydomain.com>

Auto manuals search

<http://auto.somanuals.com>

TV manuals search

<http://tv.somanuals.com>