

RCA

MM32110
MM36110



digital | **HI-RES**

TELEVISION

32/36"^{diagonal} **Digital High-Resolution Monitor-Receivers**

- HDTV Ready¹:
 - 1080i Capable
 - 800 x 1080i Pixel Resolution
- Up to 864,000 Pixels
- 1080i Display of High-Definition Signals
- DPP-Digital Precision Pitch Picture Tube
 - 0.78mm Center Dot Pitch on 36"
 - 0.77mm Center Dot Pitch on 32"
 - Dark-Tint, High-Contrast Picture Tube
- 3-Line Digital Comb Filter
- Advanced Twin Tuner™ Picture-In-Picture (NTSC Only)
- SYNCROSCAN™ HD Component Video Inputs
- SRS Focus² Audio Technology
- Seven Sets of Audio/Video Inputs
- GUIDE Plus+ GOLD³ On-Screen Program Guide



RCA

Changing Entertainment. Again.

www.rca.com

Download from www.Somanuals.com. All Manuals Search and Download.



The RCA Digital High-Resolution Monitor is our most versatile TV ever.

The RCA brand has always offered innovative technologies to enhance your home entertainment experience. The RCA Digital High-Resolution Monitor lives up to this commitment by offering outstanding picture performance and multiple connectivity options. This is the perfect vehicle to help you make the transition into the world of HDTV. The RCA Digital High-Resolution Monitor can display 1080i (interlaced) television signals (864,000 pixels) when you combine this television with an RCA HD/Digital Receiver. In addition, with its seven sets of audio and video inputs the RCA High-Resolution Monitor has much more to offer outside the world of HDTV. It's the perfect display for your computer, VCR, standard TV broadcasts, video games and your DVD player—and they can all be connected at the same time!

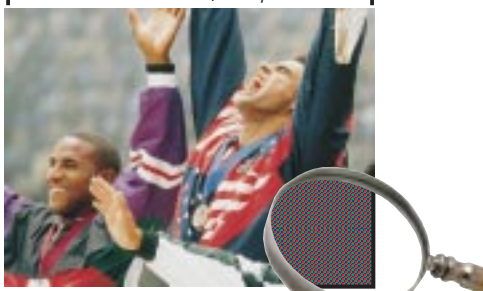
RCA Model DTC100



Combining the Digital High-Resolution Monitor with a DTC100 High-Definition Digital Receiver will provide you an HDTV quality picture.

Within the monitor's 4:3 aspect ratio viewing area, you receive the same pixel resolution inch for inch as with an HDTV picture. It is the 30% wider 16:9 aspect ratio screen that defines HDTV resolution.

4:3 ratio = 864,000 pixels



16:9 ratio = Over 1 million pixels

It's what goes on behind the screen that makes this picture incredible.

The RCA Digital High-Resolution Monitor delivers an incredible picture.

It starts with a **Digital Precision Pitch Picture Tube** which features a 0.78mm* center screen pitch that delivers crisp focus and incredible color. An INVAR shadow mask is combined with 65 watts of concentrated picture power to deliver a bright and sharp picture.

The RCA Digital High-Resolution Monitor is a **true SVGA 800x600 pixel progressive scan, SYNCROSCAN™ display**. This gives you professional quality monitor capability with a SYNCROSCAN™ system that automatically detects signals with horizontal scan rates from 15.7 kHz to 37.7 kHz. Connecting your computer to this SVGA input delivers 480,000 pixels of resolution.

The quality picture delivered to your screen can be precision tuned to your needs with the **Video and Text/Graphics Modes**. These deliver the optimum picture performance whether you are watching an HD movie or surfing the web.

*0.77 on 32"

High Performance Video System

- New SYNCROSCAN™ HD Component and (S)VGA Video Inputs**
 Automatically adjusts scan rate of component video inputs (Y-Pr-Pb). Allows for connection of regular or progressive-scan DVD players or component-output HDTV set-top boxes.
- 3-Line Digital Comb Filter**
 Separates black-and-white detail from color information to virtually eliminate edge crawls and rainbow effects while extending picture resolution.
- Video Noise Reduction**
 Video noise filter greatly reduces noisy picture interference by automatically adjusting to the incoming signal level, providing a cleaner and more consistent overall picture.
- Auto Color Balance**
 Resets individual picture tube guns (Red, Green, Blue) to maintain consistent overall picture quality for the life of the tube.
- Auto Color Control**
 Automatically maintains natural flesh tones and color fidelity from channel to channel and scene to scene.
- Dark-Tint, High-Contrast Picture Tube**
 Delivers outstanding picture contrast for blacker blacks, brilliant whites, and deep rich colors even in bright room conditions.
- Deluxe Shielded Tuner with 181-Channel Tuning Capability***
 Special shielding dramatically reduces ghosting caused from off-air pick-up when watching cable channels. Digitally-controlled frequency synthesis tuning system "locks on" to cable and standard signals with unsurpassed accuracy.
- Dynamic BlackStretch Circuitry**
 Extends black levels in bright scenes to enhance contrast and detail.
- High Performance Scan Velocity Modulation (SVM)**
 Improved SVM circuitry automatically varies the scanning speed of the picture tube's electron beam to improve sharpness and detail, especially in high-contrast areas.
- High Performance Video Amplifier**
 Delivers high resolution and clarity by extending the video frequency response. Optimizes performance from high-resolution sources such as the RCA Satellite System, DVD players, and S-Video signals (S-VHS, Hi8).
- High-Resolution Dynamic Focus Electron Gun**
 Specifically designed to optimize picture performance of Digital Precision Pitch Picture Tube. Improves corner and edge focus for an overall sharper picture.

Sound

- **SRS (C) Focus² Audio Technology**

Ingenious new technology from SRS (C) Labs. Raises the sound stage to ear level providing more lifelike audio. Combined with SRS² 3D Sound, it creates a fully immersive "live performance" listening experience from as few as two stereo speakers. Focus¹ technology is ideally suited for home applications when speakers can not be placed in optimal locations for either space or aesthetic reasons.

- **Broadcast Stereo with dbx² Noise Reduction**

Improves the clarity and fidelity of stereo broadcasts by restoring dynamic range and suppressing unwanted noise.

- **Front-Fired Speaker System**

Front-fired speakers offer 10 watts per channel of audio power. Provide excellent imaging while localizing voices at the screen.

- **Second Audio Program (SAP)**

Decodes the second audio program available on some broadcasts.

Remote

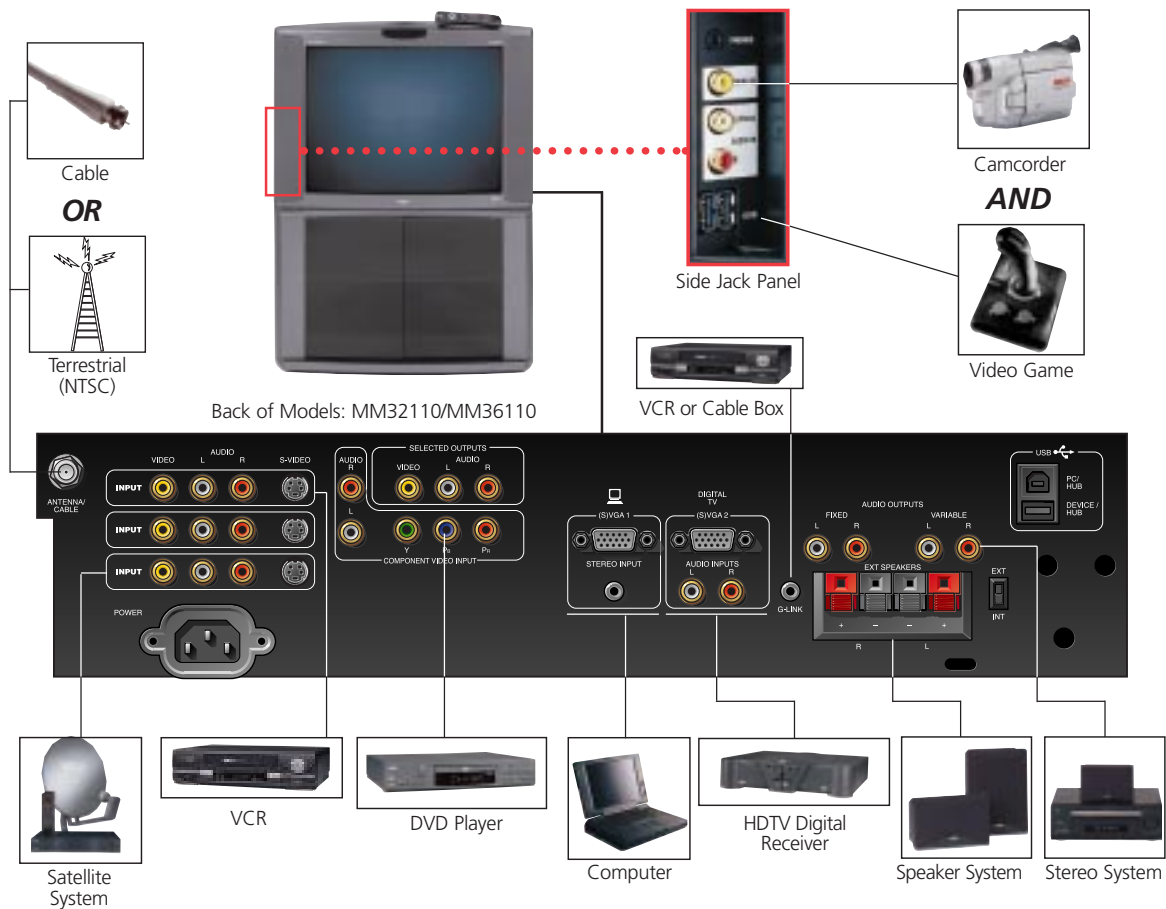
- **Universal Glo-In-The-Dark Remote (CRK76TA1)**



Connections

Connects Your World For Today And Tomorrow

To maximize the performance of the Digital High-Resolution Monitor, connect an RCA Satellite System. And the addition of the RCA DTC100 HDTV Digital Receiver provides up to 864,000 pixel capability and will enable reception of high-definition programming when it becomes available.



- **Seven Sets of Audio/Video Inputs!**

- 3 A/V composite inputs each with auto-detectable S-Video input.
- 1 set SYNCROSCANTM HD component video inputs (Y-Pr-Pb) allows for connection of regular- or progressive-scan DVD players or component-output HDTV set-top boxes.
- 2 15-pin D-sub SVGA inputs (one supports PC connection with a mini-plug audio jack for PC applications, the other provides connection for an

HDTV converter or other high-resolution source component with RCA-type audio jacks). VGA monitor "plug-and-play" convenience is supported via EDID data reporting through DDC2B protocol.

- 1 set audio/video inputs with USB port located on front panel.

- **Audio/Video Outputs**

- 1 pair fixed audio outputs (provides constant level output for recording or for stereo system with its own remote).

- 1 pair variable audio outputs (the output audio level changes with TV's remote).
- 1 set selected audio/video outputs.
- 1 set of speaker jacks for external speakers.



- **USB Connection System**

The monitor/receiver is complete with Universal Serial Bus (USB) port connection system which provides connection convenience with the latest USB-compatible PCs. Front and rear panel USB jacks allow connections of up to

127 USB peripherals such as game pads, joysticks, keyboards, and digital video cameras, to be configured with the monitor.

- **G-LINK³ Connector**

The G-LINK³ connector allows the GUIDE Plus+ GOLD³ System to work with your VCR (enabling one-touch record) and/or cable box (ability to tune directly to a station when the program guide is on your TV screen).

Model	MM32110	MM36110
Picture		
Optimum Contrast Screen	Yes	Yes
Picture Power (Watts)	65	65
Invar Shadow Mask	Yes	Yes
Stripe Pitch	0.77mm At Center	0.78mm At Center
Dynamic Focus	Yes	Yes
Scan Velocity Modulation	Yes	Yes
Aperture Sharpness	Yes	Yes
Comb Filter	Digital 3-Line	Digital 3-Line
Auto Color Control	Color Level & Tint	Color Level & Tint
Auto Color Balance	AKB Gray Scale Tracking	AKB Gray Scale Tracking
BlackStretch	Yes	Yes
Color Detail Enhancement	Yes	Yes
Wide Band Video Amplifier	Yes	Yes
Video Noise Reduction	Yes	Yes
Calibrated Color Temperature	6500 & 9300 Kelvin	6500 & 9300 Kelvin
SYNCROSCAN™ Scan Modes		
NTSC	15.7kHz/30Hz Interlaced	15.7kHz/30Hz Interlaced
VGA	640x480, 60/72Hz Progressive	640x480, 60/72Hz Progressive
SVGA	800x600, 60Hz Progressive	800x600, 60Hz Progressive
Digital TV Mode	1080 Interlaced	1080 Interlaced
Horizontal Resolution		
Lines Per Picture Height	700	700
Lines Per Picture Width	950 ⁶	950 ⁵
Sound		
Audio Power (Watts) Total	20 (10 Watts/Ch)	20 (10 Watts/Ch)
dbx ⁵ Broadcast Stereo	Yes	Yes
Second Audio Program	Yes	Yes
SRS  Sound Retrieval System ¹	SRS  Focus	SRS  Focus
Speakers	2 – 2.25 x 5" High Compliance	2 – 2.25 x 5" High Compliance
Convenience		
Channel Tuning Capability ⁴	181	181
Twin-Tuner™ Picture-In-Picture	Yes	Yes
PIP Swap And Move	Yes	Yes
Channel Labeling	Yes	Yes
V-Chip Parental Control	Yes	Yes
GUIDE Plus+ GOLD ³ with News	Yes	Yes
Stereo Headphone Jack	3.5mm Stereo Mini-Jack	3.5mm Stereo Mini-Jack
Side A/V Input	Composite, L/R Audio	Composite, L/R Audio
Side Universal Serial Bus	2-Hub	2-Hub
Universal Remote	Glo-In-The-Dark	Glo-In-The-Dark
Plug-And-Play Compatibility	VESA ⁷ DDC2B (VGA 1)	VESA ⁷ DDC2B (VGA 1)
Back Panel Inputs/Outputs		
Universal Serial Bus	Hub & Host	Hub & Host
A/V Inputs	3 – S-Video / Composite, L /R	3 – S-Video / Composite, L /R
SYNCROSCAN™ HD	Y-Pr-Pb (RCA Jacks):	Y-Pr-Pb (RCA Jacks):
Component Video Input	15.7 – 37.7 kHz	15.7 – 37.7 kHz
Monitor Control	VESA ⁷ DDC2B (VGA 1)	VESA ⁷ DDC2B (VGA 1)
UHF/VHF, Cable Input	75-OHM Terminal	75-OHM Terminal
VGA & SVGA Inputs	2 – 15-PIN D-SUB	2 – 15-PIN D-SUB
Selected A/V Outputs	S-Video, Composite, L/R, PIP	S-Video, Composite, L/R, PIP
Computer Audio Input Jack	3.5mm Stereo Mini-Jack (VGA 1)	3.5mm Stereo Mini-Jack (VGA 1)
Audio Output Jacks	Fixed & Variable	Fixed & Variable
External Speaker Terminals	1 Pair	1 Pair
User Adjustments		
	Adjustable Via On-Screen Menu	Adjustable Via On-Screen Menu
Basic Adjustments	Cont, Col, Tint, Blk Level, Sharp.	Cont, Col, Tint, Blk Level, Sharp.
Advanced Adjustments	Noise Filt., Color Temp.	Noise Filt., Color Temp.
Position Controls	Horizontal/Vertical	Horizontal/Vertical
Size Controls	Horz./Vert., Variable -6% to 0.0%	Horz./Vert., Variable -6% to 0.0%
Audio	Bass, Treb., Bal., Vol., Mute	Bass, Treb., Bal., Vol., Mute
General Specifications		
Screen Size (measured diagonally)	32"	36"
Product Dimensions (H x W x D)	25½" x 35½" x 24½"	28½" x 38½" x 26½"
Approximate Shipping Weight	145 Lbs.	190 Lbs.
Optional Base	RRS32G	RRS36G
Finish	Venetian Silver Suede	Venetian Silver Suede


Plus

- **Limited Warranty**

- One year for labor charges.
- One year for parts.
- Two years for picture tube.
- See RCA dealer or visit www.rca.com for complete details.

MM32110



- 1 HD/Digital receiver required to receive digital TV signals.
- 2 SRS, the SRS symbol , Focus and Sound Retrieval System are registered standards trademarks of SRS Labs, Inc.
- 3 GUIDE Plus+ GOLD and G-LINK are trademarks of Gemstar Development Corporation.
- 4 Check your cable company's compatibility requirements.
- 5 dbx is a registered trademark of Carillon Electronics Corporation.
- 6 Lines per picture width, 700 lines based on EIA measurement criteria.
- 7 The Video Electronics Standards Association.

MM36110



©2000 Thomson Consumer Electronics, Inc.

Form S-MM32110/MM36110

Trademark(s) ® Registered

Marca(s) Registrada(s)

Photos and features subject to change without notice. Illustration of product finish may vary from actual color. Screen sizes measured diagonally.

PC13683

Convenience



Program Listings and One-Touch Record...Right through your remote control!

"Command" Buttons

Preview Window

Information Window

Guide Selector

Promotional Windows

Program Grids

Networks



1 Press Here.

2 The Program Guide appears on your television.

GUIDE Plus+ GOLD³ Interactive Program Guide

Find out what's on! The GUIDE Plus+ GOLD³ system is a **built-in feature** that provides an instant summary of your favorite TV shows at the touch of a button—yet requires **no monthly fee!** The two-day Guide also allows you to view listings up to 48 hours in advance and delivers the capability for One-Touch Tuning and VCR recording with the press of a button.

2 ways to find your programs



The Grid Guide

Using the directional arrow pads on your remote, you may scroll through up-to-the-minute TV listings, or scroll to future programs. As each channel grid is highlighted, a description of the current program appears in the information area above the channel listing.

The Sort Guide

Want to relax and watch a movie? SORT lists movies by theme that are on for the next seven days. SORT can also help you find your favorite game or sports or children's programs.



And The Benefit of One-Touch Record

Even if your VCR is flashing 12:00, the GUIDE Plus+ GOLD³ system can record your favorite show. Simply highlight the program you would like to record and press the Record button on the remote. In the Schedule Menu, you can choose to record shows once, daily, or weekly.



News

Review top national and world news stories, updated daily, and accessed through the NEWS Menu item on the Guide bar. Comprehensive coverage includes news, weather, sports and entertainment stories.

• Advanced Auto Channel Search

Auto Cable/Air Switch sets tuner to cable or "off-air" frequencies during initial setup. Then system automatically scans for and locks active channels into channel memory.

• Advanced Twin Tuner[™] Picture-In-Picture

Two built-in independent tuning systems allow both large-picture and small-picture viewing without the need for a second external video source (e.g. VCR). In addition to standard RCA PIP feature of Swap, the Twin Tuner[™] PIP System also provides:

–Continuous Move

Permits placement of the small picture anywhere on the screen.

–Commercial Skip-to-PIP

This exclusive RCA feature allows the main picture to move to the PIP window simultaneously with the activation of an on-screen countdown timer. The viewer can then monitor the original program while browsing through other channels during commercial breaks.

• Channel Labeling

Assign on-screen characters to easily identify channels (e.g. NBC, HBO, ESPN, VH-1).

• On-Screen Menu System

On-screen displays make it easy to adjust most picture, sound, and convenience features from either the remote control or the TV front panel buttons.

• Front Panel Lockout

Completely disables front panel controls to prevent toddlers from altering settings.

• Picture Reset

Instantly returns picture to factory settings for Color, Tint, Contrast, Brightness, and Sharpness.

• V-Chip Parental Control

Puts control back into the hands of the viewer by blocking unwanted television broadcasts with U.S. Government required circuitry. Blocks three types of programs: regular television programs, broadcast movies and unrated programs.

Program rating information is sent by the broadcaster continuously during the program. The television will match program rating to user preference and block the entire program (when program is aired with the encoded signal). User preference is secured using a four-digit password.

Free Manuals Download Website

<http://myh66.com>

<http://usermanuals.us>

<http://www.somanuals.com>

<http://www.4manuals.cc>

<http://www.manual-lib.com>

<http://www.404manual.com>

<http://www.luxmanual.com>

<http://aubethermostatmanual.com>

Golf course search by state

<http://golfingnear.com>

Email search by domain

<http://emailbydomain.com>

Auto manuals search

<http://auto.somanuals.com>

TV manuals search

<http://tv.somanuals.com>