

THOMSON

**Lyra Jukebox
User's Guide**

PDP2811

Important Information

WARNING

To reduce the risk of fire or electric shock, do not expose this product or AC charger to rain or moisture.

CAUTION

RISK OF ELECTRIC SHOCK DO NOT OPEN

To reduce the risk of electric shock, do not remove cover (or back). No user serviceable parts inside. Refer servicing to qualified service personnel.



This symbol indicates "dangerous voltage" inside the product that presents a risk of electric shock or personal injury.



This symbol indicates important instructions accompanying the product.

To reduce risk of injury, charge only rechargeable batteries recommended by the manufacturer for this product. Other types of batteries may burst causing damage and personal injury.

Sound Pressure Control

Les articles de loi L44.5 et 44.6 du code de la santé publique, modifiés par l'article 2 de la loi du 28 Mai 1996 imposent une puissance acoustique maximale de 100 décibels. Le casque livré (code 55972140) et votre appareil respectent la législation en vigueur.

A pleine puissance, l'écoute prolongée du baladeur peut endommager l'oreille de l'utilisateur.

Service

This product should be serviced only by those specially trained in appropriate servicing techniques. For instructions on how to obtain service, refer to the warranty in this guide.

Important Information

Product Registration

Please fill out the product registration card and return it immediately. Returning this card allows us to contact you if needed.

Product Information

Keep your sales receipt for proof of purchase to obtain warranty parts and service and attach it here. Record the serial number and model numbers — both numbers are located on the product.

Model No. _____

Serial No. _____

Purchase Date _____

Place of purchase _____

End User License Agreement

IMPORTANT-READ CAREFULLY: This End User License Agreement ("Agreement") is a legal agreement between you and Thomson Inc. ("Thomson") for the Thomson Lyra device application/driver software program and associated documentation, if any ("Program").

ACKNOWLEDGMENT

BY INSTALLING THE SOFTWARE OR CLICKING ON THE ACCEPTANCE BUTTON OF THE SOFTWARE, COPYING OR OTHERWISE USING THE PROGRAM, YOU ACKNOWLEDGE AND AGREE THAT YOU HAVE READ THIS AGREEMENT, UNDERSTAND IT, AND AGREE TO BE BOUND BY ITS TERMS AND CONDITIONS. IF YOU DO NOT AGREE TO THE TERMS OF THIS LICENSE AGREEMENT, CLICK ON THE REJECTION BUTTON AND/OR DO NOT INSTALL THE SOFTWARE AND/OR DO NOT USE THE PROGRAM.

LICENSE

a) You are granted the license (i) to use the Program on a single workstation and (iii) to make one (1) copy of the Program into any machine-readable form for backup of the Program, provided the copy contains all of the original Program's proprietary notices.

b) You may transfer the Program and license, only as part of the Thomson Lyra device, to another party if the other party agrees to accept the terms and conditions of this Agreement. If you transfer the Program, you must at the same time either transfer all copies to the same party or destroy any copies not transferred.

LICENSE RESTRICTIONS

a) Except for the licenses expressly granted to you in this Agreement, no other licenses are implied.

b) You may not (i) modify, translate, reverse engineer, decompile, disassemble (except to the extent that this restriction is expressly prohibited by law) or create derivative works based upon the Program or (ii) copy the Program, except as expressly permitted herein. You agree that you shall only use the Program in a manner that complies with all applicable laws in the jurisdictions in which you use the Program, including, but not limited to, applicable restrictions concerning copyright and other intellectual property rights.

c) The Program may contain pre-release code that does not perform at the level of a final code release. In this case, the Program may not operate properly. Updated versions of the Program can be downloaded from www.thomson-lyra.com.

d) Thomson is not obligated to provide support services for the Program.

e) The Program is provided with "RESTRICTED RIGHTS". Use, duplication, or disclosure by the U.S. Government is subject to restrictions as set forth in subparagraph (c)(1)(ii) of DFARS 252.227-7013, or FAR 52.227-19, or in FAR 52.227-14 Alt. III, as applicable.

TERM AND TERMINATION

a) The license is effective on the date you accept this Agreement, and remains in effect until terminated by either party.

b) You may terminate this license without any notice or delay, by destroying or permanently erase the Program and all copies thereof.

c) If you use, copy, modify, or transfer the Program, or any copy, in whole or part, except as expressly provided for in this license, your license is automatically terminated.

d) When the license is terminated, you must destroy or permanently erase the Program and all copies thereof.

WARRANTY DISCLAIMER

THE PROGRAM IS PROVIDED "AS IS" WITHOUT WARRANTY OF ANY KIND, EITHER EXPRESSED OR IMPLIED, INCLUDING, BUT NOT LIMITED TO THE IMPLIED WARRANTIES OF MERCHANTABILITY, FITNESS FOR A PARTICULAR PURPOSE, TITLE OR NON-INFRINGEMENT. THE ENTIRE RISK AS TO THE QUALITY AND PERFORMANCE OF THE PROGRAM IS WITH YOU. SHOULD THE PROGRAM PROVE DEFECTIVE, YOU (AND NOT THOMSON, ITS SUPPLIERS, ITS AFFILIATES OR ITS DEALERS) ASSUME THE ENTIRE COST FOR ALL NECESSARY REPAIR OR CORRECTION.

This exclusion of warranty may not be allowed under some applicable laws. As a result, the above exclusion may not apply to you, and you may have other rights depending on the law that applies to you.

OWNERSHIP RIGHTS

All title and intellectual property rights in and to the Program and any copies thereof are owned by Thomson or its suppliers. All title and intellectual property rights in and to the content which may be accessed through use of the Program is the property of the respective content owner and may be protected by applicable copyright or other intellectual property laws and treaties. This license grants you no rights to use such content.

End User License Agreement

LIMITATION OF LIABILITY

a) TO THE MAXIMUM EXTENT PERMITTED BY APPLICABLE LAW, IN NO EVENT SHALL THOMSON, ITS AFFILIATES, OR ITS DEALERS BE LIABLE FOR ANY SPECIAL, INCIDENTAL, INDIRECT OR CONSEQUENTIAL DAMAGES WHATSOEVER (INCLUDING, WITHOUT LIMITATION, DAMAGES FOR LOSS OF PROFITS, BUSINESS INTERRUPTION, CORRUPTION OF FILES, LOSS OF BUSINESS INFORMATION OR ANY OTHER PECUNIARY LOSS) REGARDLESS OF CAUSE OR FORM OF ACTION, INCLUDING CONTRACT, TORT OR NEGLIGENCE, ARISING OUT OF THE USE OF OR INABILITY TO USE THE PROGRAM, EVEN IF THOMSON HAS BEEN ADVISED OF THE POSSIBILITY OF SUCH DAMAGES. BECAUSE SOME STATES AND JURISDICTIONS DO NOT ALLOW THE EXCLUSION OR LIMITATION OF LIABILITY OF CONSEQUENTIAL OR INCIDENTAL DAMAGES, THE ABOVE LIMITATION MAY NOT APPLY TO YOU.

b) YOU ASSUME RESPONSIBILITY FOR THE SELECTION OF THE APPROPRIATE PROGRAM TO ACHIEVE YOUR INTENDED RESULTS, AND FOR THE INSTALLATION, USE, AND RESULTS OBTAINED.

WINDOWS MEDIA

This version of the Lyra Personal Digital Player ("Lyra Player") contains software licensed from Microsoft that enables you to play Windows Media Audio (WMA) files ("WMA Software"). The WMA Software is licensed to you for use with the RCA/THOMSON Portable Audio Device digital music player under the following conditions. By installing and using this version of the Lyra Player, you are agreeing to these conditions. IF YOU DO NOT AGREE TO THE CONDITIONS OF THIS END USER LICENSE AGREEMENT, DO NOT INSTALL OR USE THIS VERSION OF THE Lyra Player.

The WMA Software is protected by copyright and other intellectual property laws. This protection also extends to documentation for the WMA Software, whether in written or electronic form.

GRANT OF LICENSE. The WMA Software is only licensed to you as follows:

You may use this version of the Lyra Player containing the WMA Software only with the Portable Audio Device player.

You may not reverse engineer, decompile, or disassemble the WMA Software, except and only to the extent that such activity is expressly permitted by applicable law in spite of this limitation.

You may transfer your right to use this version of the Lyra Player only as part of a sale or transfer of your Portable Audio Device player, on the condition that the recipient agrees to the conditions in this End User License Agreement. If the version of the Lyra Player that you are transferring is an upgrade, you must also transfer all prior versions of the Lyra Player that you have which include the WMA Software.

End User License Agreement

MICROSOFT IS NOT PROVIDING ANY WARRANTY OF ANY KIND TO YOU FOR THE WMA SOFTWARE, AND MICROSOFT MAKES NO REPRESENTATION CONCERNING THE OPERABILITY OF THE WMA SOFTWARE.

The WMA Software is of U.S. origin. Any export of this version of the Lyra Player must comply with all applicable international and national laws, including the U.S. Export Administration Regulations, that apply to the WMA Software incorporated in the Lyra Player.

Content providers are using the digital rights management technology for Windows Media contained in this device ('WM-DRM') to protect the integrity of their content ("Secure Content") so that their intellectual property, including copyright, in such content is not misappropriated. This device uses WM-DRM software to play Secure Content ('WM-DRM Software'). If the security of the WM-DRM Software in this device has been compromised, owners of Secure Content ("Secure Content Owners") may request that Microsoft revoke the WM-DRM Software's right to acquire new licenses to copy, display and/or play Secure Content. Revocation does not alter the WM-DRM Software's ability to play unprotected content. A list of revoked WM-DRM Software is sent to your device whenever you download a license for Secure Content from the Internet or from a PC. Microsoft may, in conjunction with such license, also download revocation lists onto your device on behalf of Secure Content Owners.

THIRD PARTY SOFTWARE

ANY THIRD PARTY SOFTWARE THAT MAY BE PROVIDED WITH THE PROGRAM IS INCLUDED FOR USE AT YOUR OPTION. IF YOU CHOOSE TO USE SUCH THIRD PARTY SOFTWARE, THEN SUCH USE SHALL BE GOVERNED BY SUCH THIRD PARTY'S LICENSE AGREEMENT, AN ELECTRONIC COPY OF WHICH WILL BE INSTALLED IN THE APPROPRIATE FOLDER ON YOUR COMPUTER UPON INSTALLATION OF THE SOFTWARE. THOMSON IS NOT RESPONSIBLE FOR ANY THIRD PARTY'S SOFTWARE AND SHALL HAVE NO LIABILITY FOR YOUR USE OF THIRD PARTY SOFTWARE.

GOVERNING LAW

This Agreement is governed by the laws of France, without regard to its conflict of laws.

GENERAL TERMS

This Agreement can only be modified by a written agreement signed by you and Thomson, and changes from the terms and conditions of this Agreement made in any other manner will be of no effect. If any portion of this Agreement shall be held invalid, illegal, or unenforceable, the validity, legality, and enforceability of the remainder of the Agreement shall not in any way be affected or impaired thereby. This Agreement is the complete and exclusive statement of the agreement between you and Thomson, which supersedes all proposals or prior agreements, oral or written, and all other communications between you and Thomson, relating to the subject matter of this Agreement.

Table of Contents

Important Information	2
Sound Pressure Control	2
Service	2
Warning	2
Important Information	3
Product Registration	3
Product Information	3
End User License Agreement	4
Table of Contents	8
Unpacking Your Unit	10
Things to consider before you get started...	11
Computer System Requirements	11
Secure Music Download Requirements	11
Warning	11
Caution	11
Caution While Driving	11
Back up your data	12
Important Battery Information	12
Caution	12
Inserting the Included CD-ROM into CD-ROM Drive	13
Connecting Lyra Jukebox to the Computer	14
Transferring Files to Lyra Jukebox	15
Transfer Files via Windows Media Player 10	16
Disconnecting Your Lyra from the Computer	17
Updating Device System Files	17
About Lyra DJ on your RCA Lyra:	17
Transferring Files to Lyra Jukebox	18
Transfer Files via MusicMatch Jukebox	19
Create Pre-defined Playlists and Transferring them to the Jukebox	20
Transfer Files via Windows Explorer (Drag and Drop)	20
Disconnecting Your Lyra from the Computer	21
System Tray Applications	22
Profile	22
Verify User Playlists	23
Updating System File	23
LyraSync	24
How to optimize LyraSync and Lyra Jukebox capabilities:	25
LyraDJ	26

Table of Contents

Overview of General Controls	28
Front View	28
Navigation Controls	28
Right View	30
Top View	30
Bottom View	30
Before You Begin	31
Navigation Display	33
Menu Navigation	33
Music Playback Display	34
Music Playback Operation	35
Navigation Menu	36
Playlists	38
MySelections	38
Save MySelections as a Playlist	39
View Playlists	40
Delete Playlists	41
Folder mode	42
Additional Features	44
Shuffle and Repeat	45
Adjusting DSP Settings	46
Profiling the Contents	46
System Settings	47
Customize Music Menu	49
System Info	50
Protocol (Advanced user only)	50
MTP/MSC switching	51
Portable Hard Drive Capability	52
Tips and Troubleshooting	53
Specifications & System Requirements	55
Hardware	55
Hard Disc	56
Software	56
PC Hardware Requirements	57
Accessories	57
Miscellaneous Specifications	57

Before You Begin

Dear Thomson Customer,

Thank you for purchasing the Thomson Lyra™ **Digital Audio Player**. **This product will play open mp3 and Windows Media™ audio (WMA) content as well as content purchased from most online music download services.**

After purchasing and downloading music to your PC, you are now ready to move content to your player. To transfer the music to your player, you must use Windows Media Player 10.0 or the application recommended by the online music download service.

(Note: Services and applications must be Windows Media audio-compliant and support Digital Rights Management. Windows XP required.)

Unpacking Your Unit

Your Lyra Jukebox came with everything you need to make music portable — all of the items shown below should have been packed in the box with your Lyra Jukebox.



Lyra Jukebox



Music Management CD

Contains the Lyra Jukebox applications & MusicMatch Jukebox software



AC/DC adapter charger



Mini USB cable

Plug the small end into the USB on your Lyra Jukebox, and plug the other end into your computer's USB port.



Headphones

Illustrations contained within this publication are for representation only and subject to change.

Things to consider before you get started...

Computer System Requirements

- Pentium III 500MHz or higher recommended
Macintosh iMac G3 or higher
- Windows @98SE, Me, 2000, XP SP1 or higher (SP = Service Pack)
Mac OS X Version 10.2 or higher
- Internet Explorer 4.0 or higher
- Internet access
- 100MB free hard disk space for the software
- 64MB RAM (128 MB recommended)
- CD-ROM drive capable of digital audio extraction
- USB port (2.0 recommended)
- Sound card
- 16- bit color video card

Secure Music Download Requirements

- Windows XP only, SP1 or higher (SP = Service Pack)
- Windows Media Player 10.0 or higher

Warning

Use of this product is for your personal use only. Unauthorized recording or duplication of copyrighted material may infringe upon the rights of third parties and may be contrary to copyright laws.

Caution

- Keep product out of direct sunlight. Exposure to direct sunlight or extreme heat (such as inside a parked car) may cause damage or malfunction.
- Do not expose to rain or moisture.

Caution While Driving

Use of headphones while operating an automobile or moving vehicle is not recommended and is unlawful in some states and areas. Be careful and attentive on the road. Stop operation of the unit if you find it disruptive or distracting while driving.

Before You Begin

Back up your data

As with any portable device that has a hard drive, you must back up the drive regularly. RCA and Thomson are not responsible for lost data.

Important Battery Information

- Charge the unit for at least 3 hours before first use.
- Charge the unit for at least 3 hours after putting away the unit for a long time.
- The battery used in this device may present a risk of fire or chemical burn if mistreated. Do not separately recharge, disassemble, heat above 100C (212F), or incinerate.
- **Battery replacement should only be made by a trained technician. Refer to Limited Warranty for details.**
- Do not attempt to open the unit. No user serviceable parts inside.
- To reduce risk of injury, use only rechargeable batteries recommended by the manufacturer for this product. Other types of batteries may burst causing damage and personal injury.
- Keep the unit away from children. Do not disassemble or incinerate.
- Use only the specified chargers which were packaged with the product. Use of another charger may present a risk of fire or explosion.

Caution

- The battery used in this device may present a risk of fire, explosion, or chemical burn if mistreated. Do not recharge, disassemble, heat above 100°C (212°F), or incinerate.
- Do not place the battery under direct sunlight or in excessively hot places over 45°C (113°F) such as the dashboard of car.
- Charges with specified charger which is packaged with the product.
- Dispose of used battery promptly. Keep away from children. Do not disassemble and do not dispose of in fire.



Your THOMSON product is designed and manufactured with high quality materials and components which can be recycled and reused.

This symbol means that electrical and electronic equipment, at their end-of-life, should be disposed of separately from your household waste. Please, dispose of this equipment at your local community waste collection/recycling centre.



In the European Union there are separate collection systems for used electrical and electronic product.

Please, help us to conserve the environment we live in!

The Music Management CD that came with your Lyra Jukebox contains all of the necessary software components you need to make your Lyra Jukebox work properly.

These components do the following:

- enable you to transfer files from your computer to your Lyra Jukebox
- profile, format and sort the contents, update the system files.
- use the MusicMatch Jukebox software to organize your music collection and transfer the music to your Lyra Jukebox

The MusicMatch Jukebox™ software compresses audio files (from music CDs) to the mp3 or Windows Media Audio (WMA) format so you can play them on your Lyra Jukebox. The MusicMatch software also enables you to download files from the internet that are already compressed and then transfer those files to your Lyra Jukebox (or play the music on your computer).

Inserting the Included CD-ROM into CD-ROM Drive

1. Turn on your computer and place the Music Management CD that came with your Lyra Jukebox into your computer.
2. If the setup screen does not appear, double click *My Computer*, double click your CD-ROM drive icon, and double click *Install* to run the installer.
3. Follow the on-screen instructions to install all necessary softwares. For additional help, please visit www.thomson-lyra.com.

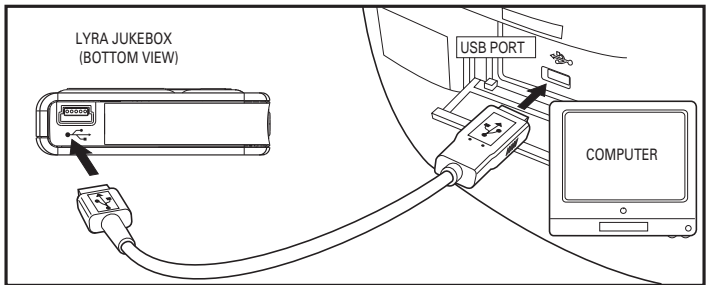
Software Setup

Connecting Lyra Jukebox to the Computer

Connect the Lyra Jukebox to your computer with the mini USB cable provided. The unit will turn on automatically. The Lyra Jukebox will appear as a Windows portable device using the Media Transport Protocol (MTP).

Note: It might take several seconds for the device (the Lyra Jukebox) to be detected. Click Refresh in My Computer or Explorer to make sure the device has been detected.

Note: The Lyra Jukebox is capable of transferring files at USB 2.0. If USB 2.0 port is available on your computer, use it to connect to your Lyra Jukebox. The Lyra Jukebox is still backward compatible with the older USB 1.1 ports. However, you will not be able to take full advantage of the potential speed increase.



Transferring Files to Lyra Jukebox

Caution:

Secure music download files are not supported on your Lyra for Windows 98SE, Me and 2000. If you have purchased secured music files, they cannot be played on your Lyra Jukebox.

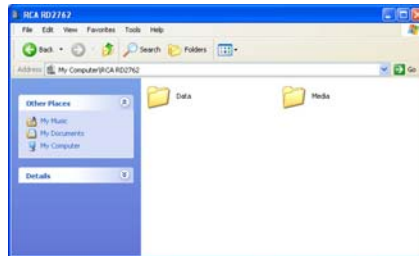
You can transfer files to your Lyra Jukebox via Windows Explorer.

If your Lyra Jukebox isn't already connected to your computer, connect the Lyra Jukebox to the computer.

Note: *Do not disconnect the USB cable during music download. Doing so may corrupt system files or the files being downloaded.*

In the Windows Explorer, when the device is opened, the "Data" and "Media" views will be displayed for the device.

The *Data View* is used to manage data content on the device, such as text files. The *Media View* is used to manage media content supported by the device for playback, such as mp3 and wma.

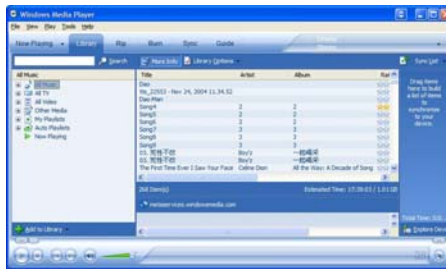


You can copy files to / delete files from the device through Windows Explorer, but you cannot open or edit the files directly from the device. If you want to edit the files, you will need to copy the files from the device to another location (drive) in the system.

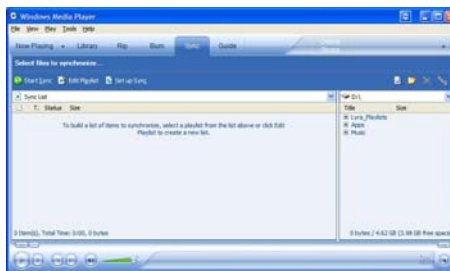
Software Setup (Windows XP only)

Transfer Files via Windows Media Player 10

1. If you want to take your music collection with you, you can easily synchronize items in your library to your portable device. The Sync feature in Windows Media Player 10 allows you to synchronize files in categories and playlists in your library to your portable device. For complete details, see the *Synchronizing content to devices* topic in the Windows Media Player 10 help documentation.
1. Connect your Lyra device to the computer and open Windows Media Player, select *Library* from the menu bar, a screen will appear as below:



2. From the left column, select the songs, categories and/or playlist items you want to copy to the Lyra Jukebox.
3. Drag the selected items to the right column.
4. Select *Sync* from the menu bar, a screen will appear as below:



5. Select Start Sync, the selected items will now be automatically transferred to your Lyra Player.

Caution: Make sure all data are transferred to the Lyra Jukebox before unplugging the USB cable.

Disconnecting Your Lyra from the Computer

Make sure all data has been transferred to the Lyra Jukebox before unplugging the USB cable. Unplugging the USB cable from the device while it is being accessed by an application or while data is being transferred may result in loss of data or damage to the device's hard drive.

Updating Device System Files

System files are stored in a special area in your Lyra Jukebox and are necessary for proper device operation. You can upgrade your Lyra Jukebox or repair damaged system files by downloading the latest files from <http://www.thonson-lyra.com>. Follow the online instructions on how to download the appropriate system files and update your device.

Possible cause of system file damage:

- You have formatted your Lyra Jukebox
- Your hard disk has failed in your Lyra Jukebox

About Lyra DJ on your Thomson Lyra:

The Lyra DJ software included with your music management CD-ROM currently is not supported by Windows XP.

For Windows XP users,

Lyra DJ will not be installed by the CD-ROM installation procedure. For this reason, the Lyra DJ menu option in your Lyra device was turned off by factory default.

Transferring Files to Lyra Jukebox

Caution:

Secure music download files must be transferred to your Lyra player through Windows Media Player 10.0 (Windows Media Player 10 is only available to Windows XP user) or the application recommended by the online music download service. Please visit the online music download service's website where you purchased your content from for more details on transferring secure music to your player.

For more information on Windows Media Player 10.0, visit <http://www.microsoft.com/windows/windowsmedia/mp10>.

You can transfer files to your Lyra Jukebox via MusicMatch Jukebox or via Windows Explorer.

If your Lyra Jukebox isn't already connected to your computer, connect the Lyra Jukebox to the computer.

Important: *Do not disconnect the USB cable during music download. Doing so may corrupt system files or the files being downloaded.*

Transfer Files via MusicMatch Jukebox

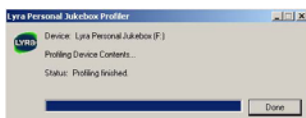
1. Drag and drop desired tracks from the *Music Library* to the *Playlist* display and save the playlist.

Note : *Be sure to save the playlist or it will not be displayed on the playlist window of the Portable Device Manager screen.*

2. From the menu area, select *Files/Send to Portable Device* or click *Send to* under the copy item on the left side of the MusicMatch Jukebox screen to display the Portable Device Manager screen.
3. Click on *Options* and select your portable device under *Select Device*. Click *OK*. Your device should be listed under Portable Device.
4. Select the playlist item and drag it to the active device listed under Portable Device. Only those playlists saved in step 1 are displayed on the playlist window. The songs in the playlist will now be automatically transferred to your Lyra Player.

When the transfer is finished, the *Lyra Personal Jukebox Profiler* application may automatically run so it can sort/profile the newly transferred files.

You can run the profiler manually by right clicking on the Lyra icon on the System Tray Area.



Caution: *Make sure all data are transferred to the Lyra Jukebox before unplugging the USB cable.*

If you're running Windows 2000 you must stop the device before unplugging it. Click the Unplug or Eject hardware icon from the system tray and select the USB Mass Storage device for the drive letter associated with the Lyra Jukebox, and select the device you want to stop. See the Windows Help for details about the Unplug or Eject Hardware topic.

Transfer Files via Windows Explorer (Drag and Drop)

If your Lyra Jukebox isn't already connected to your computer, connect the Lyra Jukebox to the computer using the provided USB cable and turn on the unit.



From Windows Explorer, highlight all the files/folders you want to transfer to your Lyra Jukebox and drag them to the drive letter that is associated with it.

Note: You must profile your contents after file transfer in order for the new files to appear in the Navigation Menu.

Create Pre-defined Playlists and Transferring them to the Jukebox

Pre-defined playlists can be created on your PC using MusicMatch Jukebox. Refer to the MusicMatch Jukebox User Manual for details. Note that only playlists created with songs stored on the Lyra Jukebox will work on the Lyra. Use Windows Explorer to transfer pre-defined playlists to your Lyra Jukebox.



If your Lyra Jukebox isn't already connected to your computer, connect it using the provided USB cable and turn the unit on.


From Windows Explorer, highlight the pre-defined playlists that you have created in MusicMatch Jukebox and drag them to the *lyra_playlists* directory in the drive letter associated with your Lyra Jukebox.

Note: You must profile your contents after file transfer in order for the new files to appear in the Navigation Menu.

Disconnecting Your Lyra from the Computer


Note: Before disconnecting the USB cable from the computer or the Lyra Jukebox, be sure the “Safe to unplug” message is displayed.



From the System Tray, double click the left mouse button on the icon  and select *Unplug or eject hardware*. Select the drive corresponding to your Lyra player.



The *Stop a Hardware device* screen appears. Select the device to be stopped again for confirmation and click *OK*.

You can also stop your Lyra Jukebox by right clicking on the  icon from the system tray and selecting the drive corresponding to your player.


System Tray Applications

Profile

New files that are transferred to your Lyra Jukebox using Windows Explorer (drag and drop) will not appear in the Navigation Menus until you profile the contents. If MusicMatch Jukebox was used to transfer files, profiling will be done automatically.

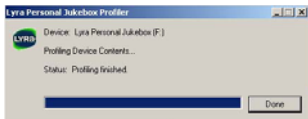
1. Connect your Lyra Jukebox to the computer using the provided USB cable if it is not already connected and turn the unit on.



2. Right click on the Lyra icon  in the System tray (bottom right hand corner of the computer screen).





3. Select the *Profile Device Content...* item to start the profiling and sorting contents.



4. Click *Done* when profiling is complete.

Caution: Make sure all data are transferred to the Lyra Jukebox before unplugging the USB cable.

In Windows 2000, you must stop the device before unplugging it. Click the  icon (the Unplug or Eject hardware icon) from the system tray and select the USB Mass Storage device for the drive associated with the Lyra Jukebox, and click STOP. See the Windows Help for details about the Unplug or Eject Hardware topic. In Windows 98SE/Me, click the  icon and follow the same instructions as above.

Updating System File


You can upgrade your Lyra Jukebox or repair damaged system files on your device by downloading the latest firmware from <http://www.thomson-lyra.com>

Verify User Playlists

Verify items in the User Playlists under the *lyra_playlist* system folder exists on the Lyra Jukebox. This will ensure the songs in your User Playlists on the device are still present on your device.

1. Connect your Lyra Jukebox to the computer using the provided USB cable if it is not already connected and turn the unit on.




2. Right click on the Lyra icon  in the System tray (bottom right hand corner of the computer screen) and select the *Verify User Playlists...* item.

LyraSync

Files and folders can be synchronized between your PC and your Lyra Jukebox.

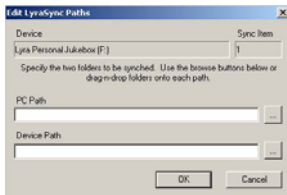
1. Connect your Lyra Jukebox to the computer using the provided USB cable if it is not already connected and turn the unit on.



2. Right click on the Lyra icon  in the System tray (bottom right hand corner of the computer screen) and select *LyraSync*.



3. The *LyraSync Options* screen appears.



4. Click *Insert* to select the paths of files and folders to synchronize between your PC and the Device. Click *OK*. Or you can drag and drop a selected folder onto the LyraSync window using Windows Explorer or My Computer.

5. Select the desired LyraSync direction.
 - PC overwrites Device - The PC is the source and the Device (Lyra Jukebox) is the destination.
 - Device overwrites PC - The Device (Lyra Jukebox) is the source and the PC is the destination.
 - Synchronize PC and Device - Both sides are source and destination. At the end of synchronization both sides will be identical.

6. Click *Synchronize* to start.

Note:

All folders and all files and sub folders in the source folder will be copied to the destination.

Files with the same name will be over written. No other files in the destination folder will be erased if the Delete Files/Folders option is NOT checked. At the end of synchronization the destination folder will contain all the files from the source folder plus any other files that were in the destination folder prior to synchronization.

If the Delete Files/Folders option IS checked then files in the destination folder that were not in the source folder will be erased. At the end of synchronization both sides will be identical.

How to optimize LyraSync and Lyra Jukebox capabilities:

Caution: This will only work if the size of all the files in the PC Music folder do not exceed the capacity of the Lyra Jukebox.

1. Create a folder called Music on the PC (For example on the C: drive - C:\Music).
2. Organize all the music that you want on the Lyra Jukebox under this folder.
3. Define the Music folder to be the Lyra Sync folder.
4. Select Synchronize PC and Device.
5. After synchronization you will have a folder on the Lyra Jukebox called Music and it will be an identical copy of all the content in the PC Music folder. This will also make it easy to use LyraDJ.

LyraDJ

LyraDJ is a software that can easily generate playlists for you, after analyzing the acoustic characteristics of your songs, the software will create sets of related content that you can listen to and enjoy.

Important Note:

1. LyraDJ will only work with mp3 files.
2. LyraDJ will only work with files that are on the Lyra Jukebox.
3. LyraDJ will only work on files in a folder called Music.

Before transferring mp3 files to the Lyra Jukebox create a folder called Music then copy all music folders or mp3 files to this folder. Multiple level sub folders under the Music folder are allowed and recommended for optimum device performance and ease of finding content. For example D:\Music\Artist1\Album1\Song1.mp3



1. Start LyraDJ.
2. The software will ask you to connect the Lyra Jukebox to the computer via USB cable.



3. Click *Analyze* to start analyzing songs in the Lyra Jukebox.

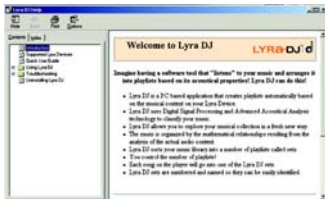
Software Setup (Windows 98SE, Me, 2000)



4. Make sure the Lyra Jukebox has at least 64 songs or else the software will not be able to generate playlist.



5. When the analysis is completed, the software will create playlists (the number of playlists created will vary, depending on the total number of songs stored in the Lyra Jukebox), you can save these playlists into the Lyra Jukebox.



6. Click *Help* at the top right corner for more informations.

About Lyra DJ on your Thomson Lyra:

If you are a non Windows XP user, (other Windows operating systems), please follow these steps to enable the menu option on your device:

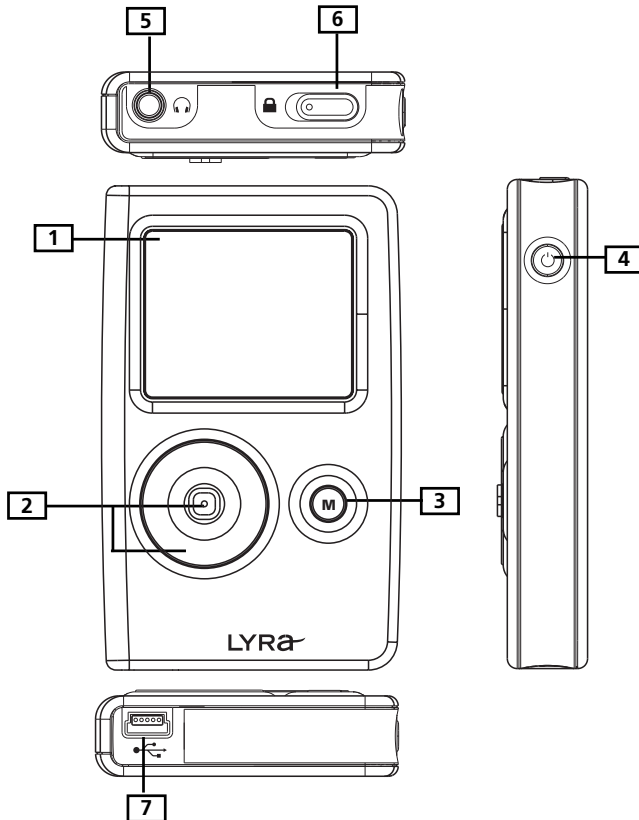
1. Turn on your device
2. Press the **(M)** menu button to access the menu options
3. Select the **Settings** menu option with the control joystick
4. Select the **Customize** settings option with the control joystick
5. Highlight the **LYRA DJ** customize option and press the control joystick to cycle the option to **On**.

You will now be able to access Lyra DJ playlists from the main **Music** menu

6. Press the **(M)** menu button to exit the menu options

For more information and further updates, please go to www.thomson-lyra.com and select the model you have purchased.

Overview of General Controls



Front View

1. **LCD (Liquid Crystal Display)** - This is where the Lyra Jukebox's user interface appears (go to *Navigation Display* for an explanation of the items that appear on the LCD during playback).

Navigation Controls

2. **CONTROL** - For navigation control and various functions in different modes.

Audio navigation mode

Control joystick - Press once to play the highlighted item; or press and hold to select the item into My Selections.

UP - scroll up one item in list.

DOWN - scroll down one item in list.

RIGHT - go in one level.

LEFT - go back one level.

Control ring - Rotate clockwise to scroll down, rotate counterclockwise to scroll up.

Audio playback mode

Control joystick - Press once to pause the selected item; or press and hold to select the item into My Selections.

RIGHT - Press to skip to the next song, press and hold to search forward.

LEFT - Press to skip to the previous song, press and hold to search backward.

UP - Increase volume.

DOWN - Decrease volume.


Control ring - Rotate clockwise to increase volume, rotate counterclockwise to decrease volume.

3. **M (Menu)** - Enter or exit menu.

Right View

4. **ON / OFF / STOP** - When the power is off, press to turn on the unit; when the unit is in stop mode, press and hold to turn the power off.

Top View

5. **Headphones jack** () - Insert the headphones plug here.
6. **HOLD** - Slide to activate or deactivate key lock.

Bottom View

7. **USB port (to computer)** - Attach the small end (Type mini-B) of the mini-USB cable here. Attach the large end (Type A) to your computer. The unit will enter USB mode automatically, and you can transfer files to and from the computer.

The Lyra Jukebox will get power from the USB port when connected, the power draw from the USB port will only be enough to support data transfer.

USB port (to power supply) - Plug in the AC power adapter here, the battery inside the Lyra Jukebox automatically starts charging.

Note: For optimum charging, DO NOT turn the player off.


Before You Begin


The following example illustrates what you should do before operating your Lyra Jukebox.

1. These instructions presume you've already done the followings:
 - Installed all necessary applications (go to *Necessary Applications* for detailed instructions).
 - Transferred music from your computer to the Lyra Jukebox and profiled the contents.

Note: *The music you're transferring could be from a CD you put in your computer, the internet, or music you already had loaded onto your computer.*

2. If you haven't unplugged the Lyra Jukebox from your computer, detach the USB cable from the Lyra Jukebox, follow the procedure below depending on the operating system (XP, 2000, ME or 98SE) your computer is using.

In Windows 2000, you must stop the device before unplugging it. Click the  icon (the Unplug or Eject hardware icon) from the system tray and select the USB Mass Storage device for the drive associated with the Lyra Jukebox, and click STOP. See the Windows Help for details about the Unplug or Eject Hardware topic.

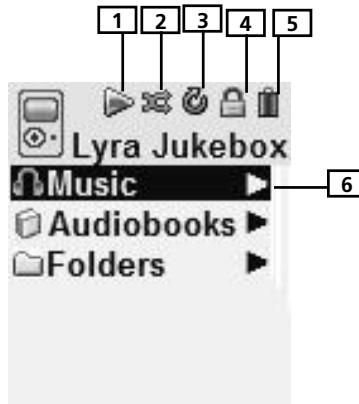
In Windows 98SE/Me, click the  icon and follow the same instructions as above.

3. If you've fully charged the battery, disconnect the AC adapter from the outlet and then from your Lyra Jukebox. (The Lyra Jukebox needs to be plugged in for about 3 hours before the battery is fully charged.

***Note:** If the battery isn't fully charged, keep the Lyra Jukebox plugged in while you listen to the music.*

4. Connect the headphones to your Lyra Jukebox.
5. If your Lyra Jukebox isn't already on, turn it on by pressing the **ON/OFF/STOP** button. The main navigation menu appears.

Navigation Display



1. This icon will change to show whether the device is playing or paused.
2. This icon will change to indicate the shuffle mode.
3. This icon will change to indicate the repeat mode.
4. The lock icon is displayed when the key lock function is activated. This can be activated by sliding **HOLD** to the left. To unlock, slide **HOLD** to the right.
5. This icon will show the battery level of the unit. When charging, the icon will animate.
6. Indicates that the item can be entered.

Menu Navigation

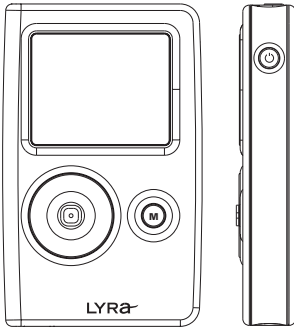
1. To scroll up and down and highlight items on the screen, rotate the **Control ring** clockwise and counterclockwise.
2. To enter and view the submenu, push the **Control joystick** to the right.
3. To go back to the previous menu level, push the **Control joystick** to the left.
4. To view the menu at any given time, press the **M** button.

Music Playback Display



1. The current song number out of the total number of songs.
2. Displays song name.
3. Song elapse time.
4. Song total duration.
5. Shows song bitrate
6. Shows song format (mp3 / wma)
7. Displays artist name.
8. Displays album name.
9. Displays genre type.
10. Displays year.
11. Shows whether the device is playing or paused.
12. Shows whether the shuffle function is activated or not.
13. Shows whether the repeat function is activated or not.
14. Shows whether the key lock function is activated or not.
15. Show the battery level of the unit. When charging, the icon will animate.

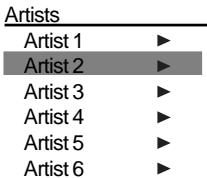
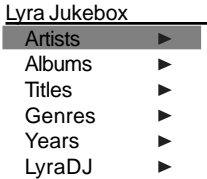
Music Playback Operation



- Once the item that you want to play is highlighted, press the **Control joystick** to begin playback. This item can be an artist, an album, a playlist, or a song. Press again to pause playback. The unit will automatically power off after being idle for more than the Power Save interval (length of this Power Save interval can be modified in the *Setting* menu).
- To scan backward in the track that's playing, push and hold the **Control joystick** to the left.
- To scan forward in the track that is playing, push and hold the **Control joystick** to the right.
- To go to the next track, push and release the **Control joystick** to the right.
- To go to the previous track, push and release the **Control joystick** to the left.
- To stop playback, press the **On/Off/Stop** button on the side of the unit.
- To turn up the volume, rotate the **Control ring** clockwise during playback. The volume bar updates to show the increase in volume level.
- To turn down the volume, rotate the **Control ring** counterclockwise during playback. The volume bar updates to show the decrease in volume level.
- To add an item to *MySelections* list, press and hold the **Control joystick** (in navigation mode or during playback). You can add an album, an artist, or an individual songs. Songs saved in this list can be played and viewed through the *Playlists* menu.
- Press **M** repeatedly during music playback to switch between the following screens:
 - First Press: Previous navigation menu shown before playback began.
 - Second Press: The options menu
 - Third Press: Back to the playback screen.

Navigation Menu

The following example illustrates steps to select and play songs in the *Artists* category.



1. Highlight *Artists* by rotating the **Control ring**.
2. Push the **Control joystick** to the right to enter the highlighted item (the *Artists* menu appears with the artists stored on your Lyra Jukebox listed in alphabetical order).
 - To scroll up and down the *Artists* menu, rotate the **Control ring**.
 - To return to the previous menu, push the **Control joystick** to the left.
3. To view the songs for the artist highlighted, push the **Control joystick** to the right to enter the highlighted item (the songs for that artist appear in alphabetical order).
 - To scroll up and down and view the list of songs for the selected artist, rotate the **Control ring**.
 - To return to the previous menu, push the **Control joystick** to the left.

Note: To show the option menu at any stage of navigation, press **M**.

Artist 2

All Songs

Album 1

Album 2

Album 3

Album 4

Album 5

Highlight the desired song.

- To play the song, press the **Control joystick**.
- Song's information will show on the display during playback.
- To end playback, press the **Stop/On/Off** button, the display will return to the last screen you were in.
- To return to the previous menu, push the **Control joystick** to the left.

***Note:** The information provided in the playback screen depends upon the ID3 tags that have been set up for the song.*

Playlists

MySelections

You can create a *MySelections* temporary playlist using the Lyra Jukebox.

Artist 2

- Artist Song 1
- Artist Song 2
- Artist Song 3
- Artist Song 4
- Artist Song 5
- Artist Song 6

1. In navigation mode, move the cursor to highlight the item to be selected.
 - To scroll up and down, rotate the **Control ring**.
 - To enter the highlighted folder, push the **Control joystick** to the right.
 - To go back to the previous folder, push the **Control joystick** to the left.
 - To view option menu, press the **M** button.

Artists

- Artist 1 ▶
- Artist 2 ▶
- Artist 3 ▶
- Artist 4 ▶
- Artist 5 ▶
- Artist 6 ▶

2. If it is an one of the followings (artist, album, song, etc.), press and hold the **Control joystick** to tag all the songs belonging to the selected item and place them into the *MySelections* playlist.

If the item is a song, press and hold the **Control joystick** to tag the song and place it into the *MySelections* playlist.

When adding to My Selection, "Add to Mysel" is displayed onto the display.

You can add a song/item into the *MySelections* playlist as many times as you want, even if it had already been selected.

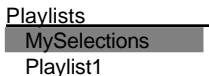
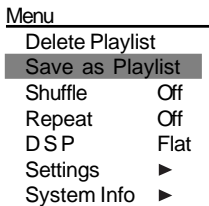
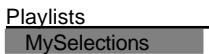
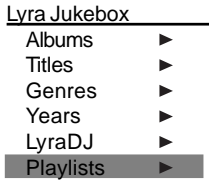
Artists

- Artist 1 ▶
- ⇒ Artist 2 ⇐ ▶
- Artist 3 ▶
- Artist 4 ▶
- Artist 5 ▶
- Artist 6 ▶

Refer to "View User Playlist" to view items in the MySelections playlist.

To clear MySelections playlist, refer to "Clear Playlists" .

Save MySelections as a Playlist



1. In navigation mode, push the **Control joystick** to move the cursor to *Playlists*.
2. When *MySelections* playlist is displayed, press **M** to enter the option menu.
3. Push the **Control joystick** to move the cursor to *Save as Playlist*. Press the **Control joystick** to enter.
4. Press the **Control joystick** when you see this screen, the unit will use *Playlist 1* as the default setting. You can change the name of the playlist as you wish.
 - Push the **Control joystick** to left and right to move the cursor.
 - Rotate the **Control ring** to change the alphabet.
5. Press the **Control joystick** to save.

View Playlists

Lyra Jukebox

Albums ▶
Titles ▶
Genres ▶
Years ▶
LyraDJ ▶
Playlists ▶

1. In navigation mode, push the **Control joystick** to move the cursor to *Playlists*.

Playlists

MySelections ▶
Playlist1
Playlist2
Playlist3
Playlist4

2. Push the **Control joystick** to the right to enter the *Playlists*.

Playlists

MySelections ▶
Playlist1
Playlist2
Playlist3
Playlist4

3. Rotate the **Control ring** to scroll up and down the *Playlists* menu to select the desired playlist to be viewed.

Playlist3

Song 1
Song 2
Song 3
Song 4
Song 5

4. Push the **Control joystick** to the right to view tagged items in the selected playlist.

Delete Playlists

Lyra Jukebox

Albums ▶
Titles ▶
Genres ▶
Years ▶
LyraDJ ▶
Playlists ▶

Playlists

MySelections ▶
Playlist1
Playlist2
Playlist3
Playlist4

Menu

Delete Playlist
Save as Playlist
Shuffle Off
Repeat Off
DSP Flat
Settings ▶
System Info ▶

1. In navigation mode, rotate the **Control ring** to move the cursor to *Playlists*.
2. When *MySelections* playlist is displayed, push the **Control joystick** to move the cursor to go to the playlist you want to clear.
3. Press **M** to enter the option menu.
4. Rotate the **Control ring** to move the cursor to *Delete Playlist*, then press the **Control joystick** to confirm.

Folder mode

Your Lyra Jukebox is a USB mass storage device that can be used to store any files. Any mp3/wma files will not show in other sorting (album, genre, etc.) before they are profiled. To see all of the files that are stored on your Lyra Jukebox:

<u>Lyra Jukebox</u>	
Titles	▶
Genres	▶
Years	▶
LyraDJ	▶
Playlists	▶
Folders	▶

1. In navigation mode, push the **Control joystick** to move the cursor to *Folders*.

Folder

- Folder 1 ▶
- Folder 2 ▶
- Folder 3 ▶
- Song 1
- Song 2

2. When *Folders* is displayed, push the **Control joystick** up and down to select the folder or file you want to browse.

Folders are listed first and individual files are listed next.

Note: *The folders and files are sorted in alphabetical order in folder mode, all folders will be listed before files.*

Additional Features

Menu

Delete Playlist	
Save as Playlist	
Shuffle	Off
Repeat	Off
DSP	Flat
Settings	▶
System Info	▶

Press **M** in any mode to access the option menu. Option menu will appear regardless of which mode you are currently in.

Note: during playback "M" has to be pressed twice to display option menu.

Shuffle and Repeat

Shuffle and repeat allow you to choose the playmode you like, different combinations of shuffle and repeat will be illustrated below.

Menu	
Shuffle	Off
Repeat	Off
D S P	Flat
Settings	▶
System Info	▶

1. Press **M** to show the option menu.
2. Rotate the **Control ring** to move to *Shuffle* or *Repeat*.
3. Press the **Control joystick** to toggle among:

Menu	
Shuffle	Off
Repeat	Off
D S P	Flat
Settings	▶
System Info	▶

Repeat One - Repeat the current item

Repeat All - Repeat all items.

Repeat Off - Repeat is Off.

Shuffle On - Plays item randomly.

Shuffle Off - Shuffle is Off.

Repeat and shuffle will work differently, depending your cursor is on a song or a set (album, genre, etc.). You can select your desired combination of *Shuffle* and *Repeat* to suit you.

Adjusting DSP Settings

DSP Settings (Digital Signal Processor settings) adjust the various levels of the audio output for different types of songs. For example, the DSP setting for BASS makes the bass sounds more prominent. You can also personalize the levels via the *Graphic* menu item. The default DSP setting for your Lyra Jukebox is *FLAT*.

Menu	
Shuffle	Off
Repeat	Off
DSP	Flat
Settings	▶
System Info	▶

1. Press **M** to show the option menu.
2. Rotate the **Control ring** to move the cursor to *DSP*.
3. Press the **Control joystick** to toggle and select the DSP setting you want to use.
 - Flat
 - Bass
 - Graphic
 - Pop
 - Rock
 - Jazz

Profiling the Contents

Profiling your device contents will sort all supported audio files on your lyra so that you can navigate to them using the onscreen menu.

Note: *It is best to profile your contents on your PC after each transfer of music files.*

Menu	
Shuffle	Off
Repeat	Off
DSP	Flat
Profile	▶
Slideshow	Off
Settings	▶
System Info	▶

1. Press **M** to show the option menu.
2. Push the **Control joystick** to move the cursor to *Profile*.
3. Press the **Control joystick** to start profiling contents on the Lyra Jukebox.
4. Profiling may take some time to complete depending on the number of songs to sort, press **Stop / Off** at anytime to stop the profiling.

System Settings

You can personalize the display settings for your Lyra Jukebox.

Menu	
Shuffle	Off
Repeat	Off
DSP	Flat
Settings	▶
System Info	▶

1. Press **M** to view the menu.
2. From the sub-menu, Rotate the **Control ring** to select *Settings*.
3. Press the **Control Joystick** to show setting options.

Settings

Contrast	0
Backlight	5s
PowerSave	5m
Sleep	Off

4. Highlight the display setting (*Customize Menu, Contrast, Backlight, PowerSave* or *SleepTimer*) you want to adjust by rotating the **Control ring**.
5. Press the **Control Joystick** to select among options in the following settings.
Contrast (between -3 to +3)
Backlight (Off, 5s, 10s, 20s, 30s, On)
PowerSave (Off, 1 min, 2 min, 5 min, 10 min)
SleepTimer (Off, 30 min, 60 min, 90 min)
6. Push the **Control Joystick** to the left to return to the previous submenu, or press the **M** button to exit the menu.

Customize Music Menu

You can set the music menu on the Lyra Jukebox to show and hide certain menu items.

Settings	
Customize	▶
Contrast	0
Backlight	5s
PowerSave	5m
Sleep	Off

Customize Menu	
Artists	On
Albums	On
Titles	On
Genres	On
Years	On
LyraDJ	On
Playlists	On
Folders	On

1. Press the **M** button to enter the Menu.
2. Rotate the **Control ring** to highlight *Settings*.
3. Press the **Control Joystick** to enter the Settings menu.
4. From the settings menu, push the **Control Joystick** to highlight *Customize*.
5. Press the **Control Joystick** to view the Customize Menu options.
6. Press the **Control Joystick** to select the highlighted menu item to hide or show. Press **Control Joystick** to toggle between On and OFF. Select On to show the item on the music menu. Select Off to hide the item from the music menu.
7. Push the **Control Joystick** to the left to return to the previous submenu, or press the **M** button to exit the menu.

System Info

System Information shows Lyra Jukebox system details which includes the number of songs you have on your Jukebox, the amount of free space available and your firmware version.

<u>Menu</u>	
Shuffle	Off
Repeat	Off
DSP	Flat
<u>Settings</u>	
System Info	▶

<u>System Info</u>	
Firmware Info	▶
Used	3874MB
Free	3609MB

1. From the settings menu, rotate the **Control ring** to select *System Info*.
2. Push the **Control Joystick** to the right to view *System Info* options.
3. Firmware and memory information will be displayed.
4. Push the **Control Joystick** to the left to return to the previous submenu, or press the **M** button to exit the menu.

Protocol (Advanced user only)

For Windows XP user, the unit is default to be in MTP mode. However, you can switch the unit between MTP and MSC mode.

<u>Settings</u>	
Contrast	0
Backlight	5s
PowerSave	5m
Sleep	Off
Advanced	▶

1. From the settings menu, rotate the **Control ring** to select *Advanced*.
2. Push the **Control Joystick** to the right to view *Advanced* options.
3. The current protocol will be displayed.
4. Press the **Control Joystick** to switch between MTP and MSC.
5. Push the **Control Joystick** to the left to return to the previous submenu, or press the **M** button to exit the menu.

MTP/MSC switching

Why do I want to use MTP (Media Transfer Protocol) Mode?

MTP Mode is essential if you want to transfer **DRM content** to your Lyra Jukebox. Today MTP Mode is only supported in Windows XP and through Windows Media Player 10.0 or other special software provided by your music service provider. In MTP mode your Lyra Jukebox will no longer show up as a drive letter. So programs that were designed to work with a device that shows up as a drive letter will not be able to work directly with the Lyra Jukebox.

Why do I want to use MSC (Mass Storage Class) Mode?

If you are using **Windows 98SE, ME or 2000** you can not use MTP Mode only MSC Mode is available. Your Lyra Jukebox will always show up as a MSC device. If you are using **Windows XP** your Lyra Jukebox will show up as a **MTP** device, but we have provided you the option to be able to switch it to **MSC Mode** with a setting in the Advanced Options section of the Lyra Jukebox. Once this setting is set to **MSC Mode** every time you connect the device to the PC it will show up as a drive letter and allow you to use any software that can work with **MSC Mode**. This will also allow the current version of LyraDJ or any other playlist editing program to find the device. All supported content put on the device in either mode **MTP** or **MSC** will be available to play on the device once it is disconnected from the PC. So you could add mp3 files in the **MSC Mode** then run **LyraDJ**, **Profile** the device and disconnect it. Then switch it to **MTP Mode** and reconnect it and add **DRM** content to it.

Portable Hard Drive Capability

Since Lyra Jukebox has a 4-gigabyte hard drive, you can use it to transport files - any files, not just music files. Some possible uses for this feature are as follows:

- Create back-ups/archive files.
- Connect to other computers - at work, for example.
- Transport files from one computer to another computer. For example, instead of putting files at work on a zip or accessing them on your home computer via e-mail or remote access, you can put the files on your Lyra Jukebox.
- Capture internet downloads.
- Share information.

* 1GB = 1X10⁹

Tips and Troubleshooting

Problem: Player repeats same tracks or all tracks.

- Repeat play is turned on. Press the **M** button to change the play mode.

Problem: Audio distorted at high volume.

- Select another DSP setting.
- Turn down the volume.


Problem: The audio tracks on my Lyra keep skipping or popping.

- You'll need to re-record the audio track – make sure you close all other applications on your PC when you record.
- Try recording with Error Correction setting turned on.

Problem: Player turns itself off.

- Your Lyra Jukebox turns itself off if you leave it in pause mode or navigation mode for the duration specified in PowerSave.

Problem: Songs aren't listed in any of the sort modes (Artist, Album, etc.).

- For Windows 98SE, Me, 2000 users, the contents of the Lyra Jukebox haven't been profiled (sorted) since the last file transfer. Select the *Profile Device Contents...* menu item from the Lyra Jukebox profiler system tray application on your PC to profile (sort) the contents of the device. The icon in the system tray looks like this . You may also select the *profiling option on the device found in the setting menu.*

Problem: Bad or missing file error message displayed on the Lyra Jukebox.

- Please go to <http://www.thomson-lyra.com> and download the latest firmware update for your device. Follow the on-screen instructions to upgrade the firmware.

Problem: Lyra Jukebox does not respond to key presses.

- If your Lyra Jukebox stops responding to key presses, you can reset it by pressing **ON/OFF/STOP** for 10 seconds. Most of your settings will be preserved; only the settings that you have changed after your last power off will be lost.
- This unit may temporarily cease to function if subjected to electrostatic disturbance. To resume normal operation, it may be necessary to cycle the power off and back on or you can reset it by pressing **ON/OFF/STOP** for 10 seconds.

Problem: The harddisk is corrupted and need to be formatted.

- Press the **control joystick** when connecting the unit to your computer using the USB cable. This will put your unit in mass storage class (MSC) mode. (Windows XP user only)
- Format your unit by right-clicking on the drive letter of your device and select **FORMAT**.
- Please go to <http://www.thomson-lyra.com> for more details.

Additional Information

“Cannot turn on unit even when the power adapter is connected.”

- Battery is deeply discharged / empty. Charge the unit for at least 3 hours before powering up.

Problem: All the songs appear twice in my unit.

- It is possible that you have copied all your songs into the Music Folder for use with LyraDJ. To resolve the problem, delete the duplicate files that are outside Music Folder. (LyraDJ only works on files that are in a folder called Music.) Next time when you need to move file on the player, use the Move command instead of the Copy command.

Cannot playback tracks on the player.

- Make sure audio tracks are encoded in the mp3 or Windows Media formats at supported bitrates.
Bitrates support by the player:
mp3 – 32 to 320 kbps
wma – 48 to 160 kbps
- WMA files may be DRM protected and you don't have the proper rights (license) to play the files.
- Check the website and/or application help system of the music download service provider from where the content was purchased from for license acquisition details. For more information on how license acquisition works, go to www.microsoft.com/windowsmedia/drm.

Problem: Player cannot play WMA songs.

- If this is a secured music, it requires Windows XP SP1 or higher (SP = Service Pack) and Windows Media Player 10 to transfer it into the device, drag and drop method will not work.

Problem: Cannot charge the battery through PC connection.

- When connected to PC, press and hold **STOP** to enter charging mode for faster charging.

Specifications & System Requirements

Hardware

- Dimensions: 83mm H, 50mm W, 15mm D
- Unit Weight: 85 g
- 4 Giga Byte Storage
- Stereo Headphones Jack
- Mini USB Connection Jack
- Battery Operated: Internal rechargeable lithium polymer battery.

Additional Information

Hard Disc

- External Hard Disc Drive: When connected to a computer via USB, the Lyra Jukebox is capable of storing any file type allowing the user a fast, convenient method of storing, retrieving, and transferring files. Including word processing files, presentations, spreadsheets and any other computer files.
- Capacity: 4 GB
- Rotational Speed: 3600 RPM
- Connection: USB 2.0, Hi-speed capable

Software

- Includes Music Management software with the Lyra Jukebox applications and the MusicMatch Jukebox software.
MusicMatch Jukebox software lets the user organize all tracks in a digital music library, create custom playlists through drag and drop interface.
- Encodes mp3 and Windows Media Audio (WMA) files.
- Integrated CD Player.
- Export to WAV
- mp3 Equalizer

PC Hardware Requirements

- Pentium III 500MHz or higher recommended
Macintosh iMac G3 or higher
- Windows @98SE, Me, 2000, or XP
Mac OS X Version 10.2 or higher
- Internet Explorer 4.0 or higher
- Internet access
- 100MB free hard disk space for the software
- 64MB RAM (128 MB recommended)
- CD-ROM drive capable of digital audio extraction
- USB port (2.0 recommended)
- Installed sound card
- 16- bit color video card

Accessories

- CD-ROM Music Management Software
- USB Connection Cable
- AC/DC Adapter
- Stereo Headphones
- Carrying Case

Miscellaneous Specifications

- Signal to Noise Ratio (>85dB) A-weighted
- THD (<0.1%)

1 MusicMatch and MusicMatch Jukebox are registered trademarks of MusicMatch Corp.

2 Warning – This product is not intended for the unauthorized recording or duplication of copyrighted material.

Additional Information

visit us at www.thomson-europe.com or www.thomson-lyra.com

Please do not send any products to the address listed in this manual or on the carton.
This will only add delays in service for your product.

THOMSON
46, quai Alphonse Le Gallo
92648 Boulogne Cedex
FRANCE
(EN)
www.thomson.net

Free Manuals Download Website

<http://myh66.com>

<http://usermanuals.us>

<http://www.somanuals.com>

<http://www.4manuals.cc>

<http://www.manual-lib.com>

<http://www.404manual.com>

<http://www.luxmanual.com>

<http://aubethermostatmanual.com>

Golf course search by state

<http://golfingnear.com>

Email search by domain

<http://emailbydomain.com>

Auto manuals search

<http://auto.somanuals.com>

TV manuals search

<http://tv.somanuals.com>