

RCA

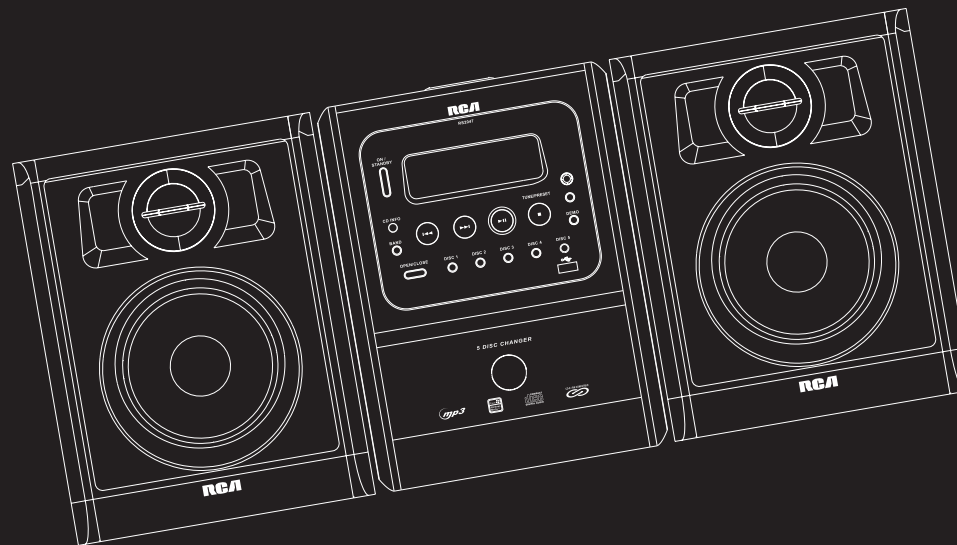
user
manual

IMPORTADOR

Comercializadora Thomson de México, S.A. de C.V.
Álvaro Obregón No. 151. Piso 13.
Col. Roma. Delegación Cuauhtémoc
C.P. 06700. México, D.F.
Telefono: 52-55-11-020360
RFC: CTM-980723-KS5

EXPORTER

Thomson Inc.
P.O. Box 1976
Indianapolis, IN 46206-1976
© 2006 Thomson Inc.
Trademark(s) ® Registered
Marca(s) ® Registrada(s)
Marque(s) ® Déposée(s)
5626 7320 (EN/F/E)
www.rca.com
Printed In China / Impreso en China



RS2047

It is important to read this instruction book prior to using your new product for the first time.
Es importante leer este manual antes de usar por vez primera su equipo.

FCC Information

EN FCC Information

This device complies with Part 15 of the FCC Rules. Operation is subject to the following two conditions: (1) This device may not cause harmful interference, and (2) this device must accept any interference received, including interference that may cause undesired operation.

In accordance with FCC requirements, changes or modifications not expressly approved by Thomson Inc. could void the user's authority to operate this product.

This device generates and uses radio frequency (RF) energy, and if not installed and used properly, this equipment may cause interference to radio and television reception.

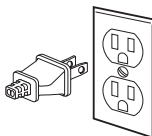
If this equipment does cause interference to radio or television reception (which you can determine by unplugging the unit), try to correct the interference by one or more of the following measures:

- Re-orient the receiving antenna (that is, the antenna for the radio or television that is "receiving" the interference).
- Move the unit away from the equipment that is receiving interference.

- Plug the unit into a different wall outlet so that the unit and the equipment receiving interference are on different branch circuits. If these measures do not eliminate the interference, please consult your dealer or an experienced radio/television technician for additional suggestions. Also, the Federal Communications Commission has prepared a helpful booklet, "How To Identify and Resolve Radio TV Interference Problems." This booklet is available from the U.S. Government Printing Office, Washington, DC 20402. Please specify stock number 004-000-00345-4 when ordering copies. This product complies with DHHS Rules 21 CFR Subchapter J. Applicable at the date of manufacture.

For Your Safety

The AC power plug is polarized (one blade is wider than the other) and only fits into AC power outlets one way. If the plug won't go into the outlet completely, turn the plug over and try to insert it the other way. If it still won't fit, contact a qualified electrician to change the outlet, or use a different one. Do not attempt to bypass this safety feature.



Main plug is used as the disconnect device, it shall remain operable and should not be obstructed during intended use. To be completely disconnected the apparatus from supply mains, the main plug of the apparatus shall be disconnected from the mains socket outlet completely.

CAUTION: TO PREVENT ELECTRIC SHOCK, MATCH WIDE BLADE OF PLUG TO WIDE SLOT, FULLY INSERT.

Have a Blast- Just Not in Your Eardrums
Make sure you turn down the volume on the unit before you put on headphones. Increase the volume to the desired level only after headphones are in place.



FCC Information

Technical specification

Product: 5CD Audio System
Brand: RCA
Model: RS2047

Electrical Consumption:

Power Supply: 120V~60Hz
Power consumption: 120 Watts

IMPORTER

Comercializadora Thomson de México, S.A. de C.V.
Álvaro Obregón No. 151. Piso 13.
Col. Roma. Delegación Cuauhtémoc
C.P. 06700. México, D.F.
Telefono: 52-55-11-020360
RFC: CTM-980723-K55

For Your Records

In the event that service should be required, you may need both the model number and the serial number. In the space below, record the date and place of purchase, and the serial number:

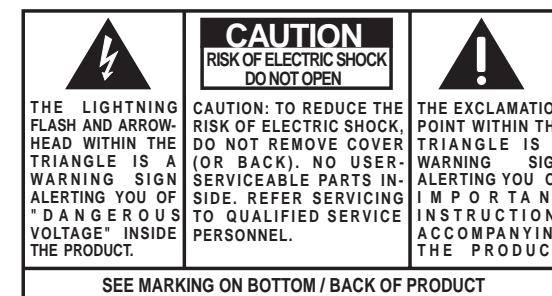
Model No.
Remote Control No.
Date of Purchase
Place of Purchase
Serial No.

Service Information

This product should be serviced only by those specially trained in appropriate servicing techniques. For instructions on how to obtain service, refer to the warranty included in this Guide.

EN

Portions based upon Microsoft Windows Media Technologies. Copyright © 1999 Microsoft Corporation. All Rights Reserved. Microsoft, Windows Media, and the Windows Logo are trademarks or registered trademarks of Microsoft Corporation in the United States and/or other countries.



WARNING: TO PREVENT FIRE OR ELECTRICAL SHOCK HAZARD, DO NOT EXPOSE THIS PRODUCT TO RAIN OR MOISTURE.

The descriptions and characteristics given in this document are given as a general indication and not as a guarantee. In order to provide the highest quality product possible, we reserve the right to make any improvement or modification without prior notice. The English version serves as the final reference on all products and operational details should any discrepancies arise in other languages.

Important Information

Safety Precautions

- Never open the cabinet under any circumstances. Any repairs or internal adjustments should be made only by a trained technician.
- Never operate this product with the cabinet removed.
- Do not use your System immediately after transporting it from a cold place to a warm place, as condensation may cause the system to malfunction.
- Keep your unit away from humid areas and abnormally hot places.
- Do not touch the player with wet hands. If any liquid enters the player cabinet, take the player to a trained technician for inspection.
- This compact disc player uses a laser to read the music on the disc. The laser mechanism corresponds to the cartridge and stylus of a record player. Although this product incorporates a laser pick-up lens, it is completely safe when operated according to directions.
- Discs rotate at high speed inside the player. Do not use damaged, warped, or cracked discs.
- Do not touch the pick-up lens which is located inside the disc compartment. To keep dust from collecting on the pick-up lens, do not leave the compartment door open for an extended period of time. If the lens becomes dirty, clean it with a soft brush, or use an air blower brush designed for camera lenses.
- The apparatus shall not be exposed to dripping or splashing and that no objects filled with liquids, such as vases, shall be placed on the apparatus.
- Minimum distances around the apparatus for sufficient ventilation .
- The ventilation should not be impeded by covering the ventilation opening with items, such as newspaper,table-cloths,curtains,etc.
- No naked flame sources,such as lighted candles,should be placed on the apparatus.
- Attention should be drawn to the environmental aspects of battery disposal .

Important Battery Information

- Remove the batteries to avoid leakage if you do not use your remote control for more than one month.
- Discard leaky batteries immediately as leaking batteries may cause skin burns or other personal injuries. Dispose of batteries in the proper manner, according to provincial and local regulations.
- Any battery may leak electrolyte under the following circumstances:
 - if mixed with a different battery type,
 - if inserted incorrectly,
 - if all batteries are not replaced at the same time,
 - if disposed of in fire, or
 - if an attempt is made to charge a battery not intended to be recharged.

Headset Safety

- Do not play your headset at high volume. Hearing experts warn against extended high-volume play.
- If you experience ringing in your ears, reduce volume or discontinue use.
- You should use with extreme caution or temporarily discontinue use in potentially hazardous situations. Even if your headset is an open-air designed to let you hear outside sounds, do not turn up the volume so high that you are unable to hear what is around you.

Don't Infringe

This product should only be used for the purposes for which it is sold, that is, entertainment, violating no copyright law. Any attempts to use this product for which it is not intended is unlawful and therefore not condoned by Thomson.

Table of Contents

FCC Information

Important Information

Table of Contents1

Getting Started2

Unpacking the system
Unit Back Connections
Using the FM and Am Antennas
Connecting the Speakers
Installation

General Controls3

Display4

Sound Features4

Bass Boost
Muting Audio
EQ

Quick Start5

Discs Playback
USB Playback
Listening to Radio
Listening to Auxiliary Input

Clock and Timer6

Showing Demonstration
Setting Clock
Setting Timer
Sleep Mode

CD & USB Playback7

Important CD and mp3/WMA Information
Basic Listening8
Sampling Tracks
Repeat
Random Playback
Track and Files Navigation
Setting Up Programs9
Playing Programs
Reviewing Programs
Deleting Programs
Deleting Entire Program
mp3/WMA Playback Sequence10

CD to USB Recording11

Recording CD to USB Device
Deleting a File from USB Device
Deleting All Files on USB Device
Renaming Files on USB Device

Radio12

Basic Listening
Auto Preset Programming (FM only)
Manually Setting Presets
Using Presets

Troubleshooting Tips13

Maintenance14

Cleaning
CD Player
Handling CDs
Cleaning CDs
CD Lens Care
Technical Specification

Limited Warranty (U.S.)15

Limited Warranty (Canada)16

EN

Getting Started

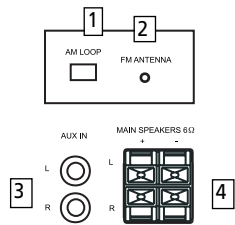
EN

Unpacking the system

You should have the following:

- one main unit (with 2 main speakers);
- one remote control;
- one AM loop antenna;
- one user's guide;
- one safety leaflet;
- owner registration Card.

Unit Back Connections



1. AM Loop antenna Jacks.
2. FM Pigtail Antenna.
3. AUX IN
4. Main Speaker Jacks.

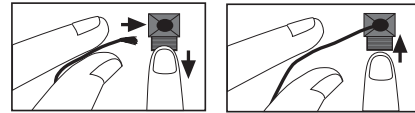
Using the FM and AM Antennas

Before you use your audio system, you'll want to make sure both the FM and AM antennas are positioned properly. Uncoil the FM antenna at the back of the unit, making sure it is fully extended (you may even want to tape it to the wall behind the unit if possible. The higher the better.) You'll also need to connect the AM antenna loop to the back of the unit if you listen to AM stations. Rotate the AM loop antenna for better reception.

Connecting the Speakers

Each speaker has a black (negative) and a red (positive) jack. When connecting the speakers, match the red wires to the red jacks and the black wires to the black jacks.

Speaker Wire Connection



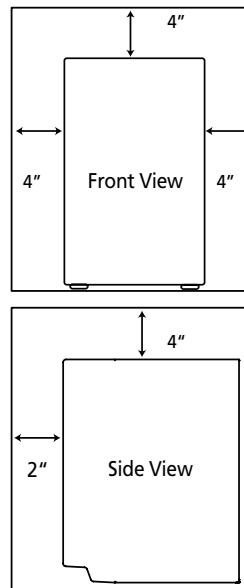
Push Speaker terminal tab down to insert wire.

Release tab to lock wire in the terminal.

NOTE: Make sure the insulation is completely removed from the ends of the speaker wires at all connection points.

Installation

To ensure sufficient ventilation, keep the spacings shown below free from other surfaces:



General Controls

EN

Refer to the actual unit or remote control while you are reading below descriptions. Some keys may have extra functions in specific operation.

Front View

ON/STANDBY - turns power on or off (STANDBY mode). In STANDBY mode, press to turn the system on in the previously used mode.

CD INFO - selects display information (such as elapsed playback time) of currently playing CD, ID3 tag of mp3/WMA files and memory usage in USB mode.

BAND - selects tuner bands; enters auto preset program in FM mode.

◀◀ (skip backward) - goes to the previous track or file (CD and USB modes); selects the previous program location; tunes down radio frequency; selects the previous radio preset station and decreases hour and minute digit in clock setting.

▶▶ (skip forward) - goes to the next track or file (CD and USB modes); selects the next program location; tunes up radio frequency; selects the next radio preset station and increases hour and minute digit in clock setting.

▶|| (play/pause) - plays and pauses playback.

■ (stop) - stops playback or recording; returns to the first track on a mp3/WMA disc; selects tune or preset mode when listening to the radio.

SOURCE - selects among CD player, tuner, USB and AUX modes. Look at the display icons to identify the current mode.

DEMO - turns the feature demonstration on or off.

OPEN/CLOSE - opens or closes the disc tray.

DISC 1 - 5 - select corresponding disc tray.

Top View

- VOLUME + - adjusts volume; navigates through folders and files in navigation mode.

PHONES - jack for connecting headphones

CD REC - starts and stops CD to USB recording.

SELECT - enters navigation mode in CD and USB mode.

DELETE - deletes programs; removes files from USB device.

BACK - navigates backward during file navigation.

Remote Control

ON/STANDBY, SOURCE, CD INFO, BAND, OPEN/CLOSE, ▶||, ◀◀, ▶▶, ■ - same function as the corresponding key on the main unit.

◀▶▶▶ (navigation keys) - move in indicated direction during file navigation. Refer to "Track and Files Navigation" for details.

B.BOOST - turns on or off Bass Boost.

FM ST - selects between stereo and mono sound in FM tuner mode.

EQ - selects equalizer presets.

⏏ - cuts and restores audio output.

VOL ▼ or **▲** - decreases or increases volume.

DISC SKIP - skips to next disc tray.

PROG - enters program mode for CD, USB and tuner modes; applies new settings for clock and timer; confirms editing name in file renaming.

INTRO - turns intro mode on or off to play the first 10 seconds of each track in CD and USB modes.

CLOCK - enters clock setting mode; shows clock time.

ADD - selects tracks or files into program.

⊗ - turns on/off random listening in CD and USB modes.

TIMER - enters timer setting mode; turns timer on/ off.

DEL - deletes programs; removes files from USB device.

REPEAT - selects repeat mode.

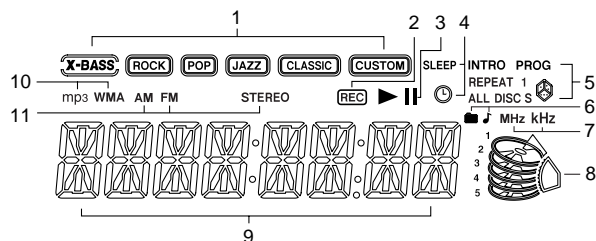
SLEEP - selects the time interval in minutes before the unit turns off.

Installing Batteries

The remote control must be inserted with 2 "AAA" or "UM-4" or "R03" batteries prior to use.

Display

EN



- | | |
|--------------------------------------|--|
| 1. Sound features | 8. Disc trays |
| 2. Recording in progress | 9. Track playback time, radio frequency, clock time, file information etc. |
| 3. Playback in progress or paused | 10. File format |
| 4. Timer or sleep function activated | 11. Radio bands and FM stereo signal received |
| 5. Playback modes activated | |
| 6. File and folder icons | |
| 7. Radio frequency unit | |

Sound Features

Bass Boost

Press **B.BOOST** to turn on/off boosting the bass frequency. The X-BASS icon lights on the display when it is activated.

Muting Audio

Press **MUTE** on the remote to cut and restore the sound. "MUTE" flashes on the display when sound is cut.

EQ

Press **EQ** on the remote control to select among FLAT, ROCK, POP, JAZZ, CLASSIC and CUSTOM. Corresponding icon lights on the display (except FLAT).

Creating a Custom Curve

1. Press **EQ** on the remote control to select CUSTOM mode.
2. While "CUSTOM" is displayed, press **◀** or **▶** to select between "BAS" (bass) and "TRE" (treble) range levels.
3. While "BAS" or "TRE" is displayed, adjust volume to set the associated gain between -10 and +10.

4

Quick Start

EN

Refer to the following for basic playback and radio listening. For detailed operations and more advanced features, please refer to relevant sections.

Discs Playback

1. Press **SOURCE** repeatedly to select CD mode.
2. Press **OPEN/CLOSE** to open the disc compartment.
3. Insert up to 5 discs with label face up.
4. Press **OPEN/CLOSE** again to close the disc compartment.
 - The occupied disc tray icons lights on the display and the current disc icon flashes on the display.
 - If the disc is a mp3 / WMA CD, the respective *mp3* and *WMA* icon lights on the display.
5. Press **▶||** in stop mode to begin playback. Press during playback to pause and again to resume playback.
6. Press **◀** or **▶** to skip to the previous or next track or file. Press and hold to search through a CD while it is playing.
7. During playback, press **■** to stop playback.

Playing and Loading Discs Simultaneously

1. Press **OPEN/CLOSE** to open the disc tray while a CD is playing.
2. Load/change discs for available trays.
3. Press **OPEN/CLOSE** again to close the tray.

Selecting Discs

- Press **DISC 1 / DISC 2 / DISC 3 / DISC 4** or **DISC 5** on the main unit to select disc.
- Press **DISC SKIP** on the remote control to skip discs.

USB Playback

1. Insert a USB device to the USB connector at the front of the unit.
2. Press **SOURCE** repeatedly to select USB mode.
3. Press **▶||** in stop mode to begin playback. Press during playback to pause and again to resume.
4. Press **◀** or **▶** to skip to the previous or next track or file. Press and hold to search through a CD while it is playing.
5. During playback, press **■** to stop playback.

Listening to Radio

1. Press **SOURCE** repeatedly to select TUNER mode.
2. Press **BAND** to select between FM or AM radio band.
3. Press **■** until you see "PROG" icon disappear from the display.
4. Press **◀** or **▶** to select frequencies.
5. Press **FM ST** on the remote control to select between FM mono and stereo mode. "STEREO" icon shows on the display in stereo mode.

Listening to Auxiliary Input

1. Connecting External Device

Insert audio cables (not included) to the L (left channel) and R (right channel) input jacks on the back of the unit.

2. Selecting and Playing External Device

Press **SOURCE** to select AUX mode. Control playback on your external device. Adjust volume on the main unit or the remote control.

5

Clock and Timer

EN

Showing Demonstration

Press **DEMO** to turn on/off demonstration mode. The demonstration scrolls through all display operations.

Setting Clock

1. Press and hold **CLOCK** on the remote control until the hour flashes on the display.
2. Press **◀** or **▶** to set the hour and then press **CLOCK** to shift to minute digits.
3. Press **◀** or **▶** to set the minute.
4. Press **CLOCK** to save settings or **■** to quit setting.




Note:

When system is ON, you can press **CLOCK** to display the current time for about 2 seconds.

Setting Timer

1. Press and hold **TIMER** on the remote control until the ON and clock hour flashes on the display (ON - timer on time).
2. For setting time, press **◀** or **▶** to set the hour and then press **TIMER** to shift to minute digits.
3. Press **◀** or **▶** to set the minute.
4. Press **TIMER** to change to OF (timer off time) with clock time flashing. Repeat steps 2 & 3 for timer off time setting.
5. Press **TIMER** to select source. Press **◀** or **▶** to select between DISC/ TUNER/ USB.
6. Press **TIMER** to set volume. Adjust **◀** or **▶** to select desired volume level.
7. Press **TIMER** on the remote control to turn timer on or press **■** to quit setting.

Activating the Timer

Press **TIMER** once to turn on/off the alarm. The timer icon  is displayed when timer is activated.

Sleep Mode

You can select the time interval in minutes before the unit turns off automatically.

- Press **SLEEP** to select among OFF, 120, 90, 60, 45, 30, 15 and 5 minutes. The "SLEEP" icon lights on the display when sleep mode is activated.
- When sleep is activated, press **SLEEP** once to view remaining sleep time.
- Press **SLEEP** again when the remaining sleep time is displayed to change sleep time.



Note:

Sleep is automatically de-activated when the unit is turned off.

CD & USB Playback

Important CD and mp3/WMA Information



This unit is compatible with CD-RW/ CD-R discs for playback.



Notes on CD-R/RW Disc:

- Do not affix any type of labels to either side (recordable or labeled side) of a CD-R/RW disc as this may result in the unit malfunctioning.
- Playback capability for CD-RW discs may vary due to variations in the quality of the CD-RW disc and the recorder used to create the disc.



Attention:

Do not push to force closing of the tray during CD playback or tray opening. Be sure to remove all discs from the disc compartment before moving or transporting the unit!



Notes on mp3/WMA Disc:

- Use .mp3 as the extension when converting audio files into mp3 for saving onto CD-R(W) or CD-ROM, e.g. Abc08.mp3. Do not use any other extension e.g. .doc, .pdf.
- Do not use the .mp3 extension for other text or non-audio data files as this may result in serious malfunction and harmful noise interference.
- For better quality in mp3/WMA disc playback, the CD quality should be recorded 128kbps or above.
- Disc data size > 650MB is not recommended.
- Total files and folders in the disc should not exceed 250, it also depends on the length of the file/folder names.
- For mixed mode discs, only one mode will be selected for playback depending on the recording format.
- To ensure good performance, wait until the disc changer completely reads the disc before proceeding.
- mp3 files in CD ROM EXTRA format disc cannot be recognized.

EN

CD & USB Playback

EN

Basic Listening

For basic listening operations, refer to "Quick Start".

CD Information

Press **CD INFO** repeatedly to view the following audio CD information:

- elapsed track time,
- remaining track time (T--),
- disc elapsed time (D)
- disc remaining time (D--)

For mp3/WMA and USB playback, title, artist and elapsed time show on the display alternatively. In stop mode for mp3/WMA discs, press **■** to view the total number of files on the disc. Press again to show the total number of folders.

Sampling Tracks

Press **INTRO** on the remote control to play the first 10 seconds of each track / file on the current disc or USB device. Press again to turn intro mode off. "INTRO" icon shows on the display when sampling is activated.

Repeat

Press **REPEAT** repeatedly on the remote control to repeat the current track (REPEAT 1), current disc (REPEAT 1 DISC), all discs (REPEAT ALL DISCS), or turn repeat mode off (ALL DISCS).

Random Playback

Press **⊞** on the remote control to turn on/off random playback. The **⊞** icon is displayed when it is activated.

All the tracks on a disc will be shuffled and played once before shuffling and playing tracks from the next disc.



Note:

The first 99 tracks of each disc will be shuffled and played once before any of them is repeated.



Tips:

Random playback can be activated simultaneously with repeat 1 disc (randomly play tracks from one disc repeatedly) or repeat all discs (randomly play tracks from all discs repeatedly).

Tracks and Files Navigation

For audio CDs:

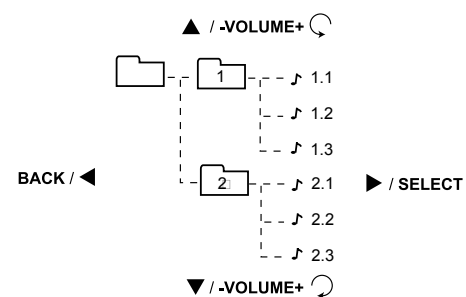
1. When playback is stopped, press **SELECT** on the main unit or **▶** (navigation key) on the remote control. The display shows "TRACK" and the total number of tracks on the disc.
2. Rotate **-VOLUME+** on the main unit or **▲▼** (navigation keys) on the remote control to select tracks.

For mp3/WMA discs and USB devices:

1. When playback is stopped, press **■** to enter navigation mode. The display shows "TRACK" and the total number of files on the disc or USB device.
2. Press **SELECT** on the main unit or **▶** (navigation key) on the remote control.
3. Use **◀▶▲▼** (navigation keys) on the remote control or **SELECT, BACK** and **-VOLUME+** on the main unit to navigate through folders and files. Refer to the following for quick reference:

CD & USB Playback

EN



- **BACK / ◀** - goes back up one level.
- **SELECT / ▶** - enters selected folder; begins playback of the selected file and confirms selection.
- **-VOLUME+** (anti-clockwise) / **▲** - selects previous file or folder.
- **-VOLUME+** (clockwise) / **▼** - selects next file or folder.

You can view the folder or file names on the display while navigating through them. A folder or file (music note) icon also shows next to the names to indicate their property.

Setting Up Programs

You can create a program of up to 32 tracks.

1. Follow instructions of "Tracks and Files Navigation" and select a track or file to be programmed.
2. Press **ADD** on the remote control to save selected track or file into the next available program location. Alternatively, you can press **ADD** while you are listening to the desired track or file.
3. Repeat steps 1 and 2 to program more tracks or files.

Playing Programs

Press and hold **PROG** on the remote control to enter program mode. Press **▶||** to start playback of the program.

Reviewing Programs

Press and hold **PROG** on the remote control to enter program mode. Press **▲▼** (navigation keys) (or rotate **-VOLUME+** on the main unit) to review programmed tracks or files.

Deleting Programs

1. In program mode, press **▲▼** (navigation keys) (or rotate **-VOLUME+** on the main unit) to select unwanted programmed track or file.
2. Press **DEL** on the remote control (or **DELETE** on the main unit);
3. Press **▲▼** (or rotate **-VOLUME+** on the main unit) to select "YES".
4. Press **▶** (or **SELECT** on the main unit) to confirm deletion.

Deleting Entire Program

While in PROGRAM mode, press and hold **STOP** for 3 seconds. The system displays the message CLEAR.



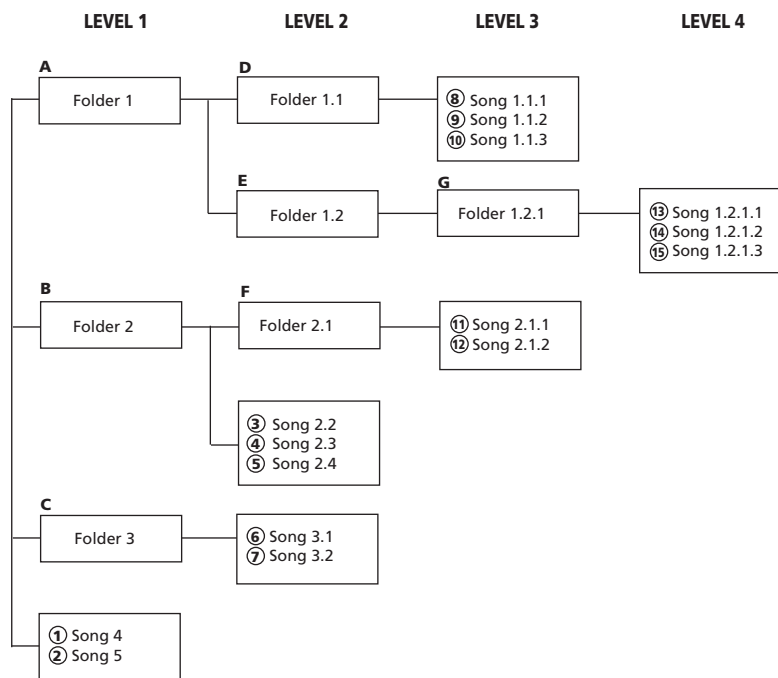
Note:

Only the first 99 tracks from each disc can be programmed.

CD & USB Playback

EN mp3/WMA Playback Sequence

- Check that the mp3/WMA disc is created with a single folder structure. Refer to the diagram below for playback sequence details on multi-level folder structure.
- For example, folders and songs from level 2 are played before moving on to play folders and songs from level 3.



Note:

- Folder playback sequence is indicated by the letters A to G.
- Song playback sequence is indicated by the numbers (1 to 15) in front of the song name.

CD to USB Recording

You can record CD tracks / files to your USB device.

Recording CD to USB Device

1. Connect a USB device to the USB connector at the front of the unit.
2. In CD mode, press **CD REC** to enter record mode. If CD playback is stopped, press **CD REC**, playback and recording will start automatically. If CD is already playing, recording starts at once. "REC" icon shows on the display in record mode.
3. Press **CD REC** or **■** to stop recording.

Recording Selected Tracks on a CD to USB Device

1. Create a CD program by following instructions under "Setting Up Programs".
2. In CD stop or navigation mode, press **CD REC** to enter record mode.
3. From stop mode, press **PROG** to enter program playback mode. Playback and recording starts automatically. The "PROG" and "REC" icons show on the display.
4. Press **CD REC** or **■** to stop recording.



Note:

Recording stops automatically when CD stops (Example: end of disc is reached).

Deleting a File from USB Device

1. Select the unwanted file using the navigation keys (refer to "Tracks and Files Navigation" for details)
2. Press **DEL** on the remote control (or **DELETE** on the main unit).
3. Select "YES" on the display by using **▲ ▼** (navigation keys) (or rotate **-VOLUME+** on the main unit).
4. Press **▶** on the remote control (or **SELECT** on the main unit) to confirm.



Note:

Only empty folders can be deleted.



Note:

After deleting the last file in a folder, the display shows 'EMPTY' and then goes back up one level in the folder tree and shows the current empty folder.

Deleting All Files on USB Device

In navigation mode, press and hold **DEL** on the remote control (or **DELETE** on the main unit) to delete all files on the USB device.

Renaming Files on USB Device

1. Select a desired file using the navigation keys (refer to "Tracks and Files Navigation" for details).
2. Press **PROG** on the remote control.
3. Press **▲ ▼** (navigation keys) (or rotate **-VOLUME+** on the main unit) to select alphabets, press **◀ ▶** (or **BACK** or **SELECT** on the main unit) to move to the next alphabet. The alphabet being edited is flashing on the display.
4. Press **PROG** when finished.

Radio

EN

Basic Listening

Refer to "Quick Start" for basic listening operations.

Auto Preset Programming (FM only)

Press and hold **BAND** for 2 seconds to scan stations in FM band. The stations will then be stored as preset channels. A maximum of 32 stations can be stored. Beware of your preset channels being erased accidentally because the scanning and storing process is automatic upon pressing the button. You can stop the automatic scan by pressing any button, but the erased stations cannot be recovered.

Manually Setting Presets

1. Press **■** until you see "PROG" icon disappear from the display to enter tuning mode.
2. Press **◀** or **▶** to access the desired frequency.
3. Press **PROG** once on the remote control.
4. The most recently accessed program location will be displayed. If a different program location is preferred, press **▲** **▼** (navigation keys) on the remote control (or **◀** **▶** on the main unit) to select a desired preset number (1-32).
5. Press **PROG** to store the selected frequency at that preset.

Using Presets

The tuner can be in either TUNE or PRESET mode. When in PRESET mode, the PROG light is on.

1. Press **■** until you see "PROG" icon appear on the display to enter preset mode.
2. Press **◀** or **▶** on the main unit or **▲** **▼** (navigation keys) on the remote control to access the previous or next preset station. The display first shows the preset program number and after a few seconds, the frequency will be displayed. (P:22 is preset 22)

Troubleshooting Tips

EN

Problem	Solution	Problem	Solution
<i>System will not turn on</i>	<ul style="list-style-type: none"> • Check power cord for a secure connection. • Unplug the unit for a moment, and then plug into power source again. • Check the outlet by plugging in another device. 	<i>CD sound skips</i>	<ul style="list-style-type: none"> • Clean the disc. • Check disc for warping, scratches, or other damage. • Check if something is causing the system to vibrate. If so, move the system. • Make sure the speakers are at least 3 feet away or on a different surface from the main unit.
<i>No sound</i>	<ul style="list-style-type: none"> • Increase the volume setting. • Check connection to speakers. • Check that you have selected the appropriate function: CD, Tuner. • Make sure mute is off. • Make sure headphones are not plugged in. 	<i>CD button will not respond, or does not change discs when you press DISC SKIP</i>	<ul style="list-style-type: none"> • Switch to another function (Tuner) and then back to CD.
<i>Poor radio reception</i>	<ul style="list-style-type: none"> • Check antenna connection. • Move antenna. • Turn off nearby electrical appliances, such as hair dryer, vacuum cleaner, microwave, fluorescent lights. 	<i>Remote control does not work</i>	<ul style="list-style-type: none"> • Check that the batteries are properly installed. • Replace weak batteries. • Check the system is plugged into power source. • Point the remote directly at the system's front panel. • Move closer to the system. • Remove any obstacles between the remote and the system.
<i>CD does not play</i>	<ul style="list-style-type: none"> • Check that CD is in the tray. • Check that CD label is facing up. • Check that PAUSE mode is not on. • Check that CD function is selected. • Use CD lens cleaner. • Clean the disc. • Try another CD. 		

Maintenance

EN

Disconnect the audio system from the power source before performing any maintenance.

Cleaning

Clean the exterior of the system using a soft dust cloth.

CD Player

CAUTION! This system operates with a laser. It must be opened by only a qualified technician.

Handling CDs

- Do not touch the signal surfaces. Hold CDs by the edges, or by one edge and the hole.
- Do not affix labels or adhesive tapes to the label surfaces.
- Do not scratch or damage the label. CDs rotate at high speeds inside the player.
- Do not use damaged (cracked or warped) CDs

Cleaning CDs

- Dirty CDs can cause poor sound quality. Always keep CDs clean by wiping them gently with a soft cloth from the inner edge toward the outer perimeter.
- If a CD becomes dirty, wet a soft cloth in water, wring it out well, wipe the dirt away gently, and then remove any water drops with a dry cloth.
- Do not use record cleaning sprays or antistatic agents on CDs. Also, never clean CDs with benzene, thinner, or other volatile solvents which may cause damage to disc surface.

CD Lens Care

When your CD lens gets dirty it can also cause the system to output poor sound quality. To clean the lens you will need to purchase a CD lens cleaner which can maintain the output sound quality of your system. For instructions on cleaning the CD lens, refer to the ones accompanying the lens cleaner.

Technical Specification

Power supply: 120V~60Hz

Dimensions (H x W x D inches):

Unit size - 10.5 x 9.9 x 12.9

Speaker - 13 x 9.5 x 8.4

Net Weight: 11lbs

CD player: Response curve (+/- 2dB): 60Hz to 5kHz

Rating Plate: Look for it at the back of the set.

Limited Warranty (U.S.)

EN

What your warranty covers:

- Defects in materials or workmanship.

For how long after your purchase:

- One year from date of purchase for labor and parts
- Warranty period for rental units begins with the first rental or 45 days from date of shipment to the rental firm, whichever comes first.

What we will do:

- Pay any Authorized RCA Audio Service Center the labor charges to repair your unit.
- Pay any Authorized RCA Audio Service Center for the new or, at our option, refurbished replacement parts required to repair your unit.

How you get service:

- Take your unit to any Authorized RCA Audio Service Center. To identify your nearest Authorized RCA Audio Service Center, ask your dealer, look in the Yellow Pages, or call 1-800-336-1900.
- Show the Authorized Service Center Representative your evidence of purchase date or first rental.
- Pick up your unit when repairs are completed.
- Proof of purchase in the form of a bill of sale or receipted invoice which is evidence that the product is within the warranty period must be presented to obtain warranty service. For rental firms, proof of first rental is also required.

What your warranty does not cover:

- Customer instruction. (Your Owner's Manual describes how to install, adjust, and operate your unit. Any additional information should be obtained from your dealer.)
- Installation and related adjustments.
- Signal reception problems not caused by your unit.
- Damage from misuse or neglect.
- Cleaning of audio heads.
- Batteries.
- A unit that has been modified or incorporated into other products or is used for institutional or other commercial purposes.
- A unit purchased or serviced outside the U.S.A.
- Acts of nature, such as but not limited to lightning damage.

Product Registration:

- Please complete and mail the Product Registration Card packed with your product. It will make it easier to contact you should it ever be necessary. The return of the card is not required for warranty coverage.

Limitation of Warranty:

- THE WARRANTY STATED ABOVE IS THE ONLY WARRANTY APPLICABLE TO THIS PRODUCT. ALL OTHER WARRANTIES, EXPRESS OR IMPLIED (INCLUDING ALL IMPLIED WARRANTIES OF MERCHANTABILITY OR FITNESS FOR A PARTICULAR PURPOSE) ARE HEREBY DISCLAIMED. NO VERBAL OR WRITTEN INFORMATION GIVEN BY THOMSON INC., ITS AGENTS OR EMPLOYEES SHALL CREATE A WARRANTY OR IN ANY WAY INCREASE THE SCOPE OF THIS WARRANTY.
- REPAIR OR REPLACEMENT AS PROVIDED UNDER THIS WARRANTY IS THE EXCLUSIVE REMEDY OF THE CONSUMER. THOMSON INC. SHALL NOT BE LIABLE FOR INCIDENTAL OR CONSEQUENTIAL DAMAGES RESULTING FROM THE USE OF THIS PRODUCT OR ARISING OUT OF ANY BREACH OF ANY EXPRESS OR IMPLIED WARRANTY ON THIS PRODUCT. THIS DISCLAIMER OF WARRANTIES AND LIMITED WARRANTY ARE GOVERNED BY THE LAWS OF THE STATE OF INDIANA. EXCEPT TO THE EXTENT PROHIBITED BY APPLICABLE LAW, ANY IMPLIED WARRANTY OF MERCHANTABILITY OR FITNESS FOR A PARTICULAR PURPOSE ON THIS PRODUCT IS LIMITED TO THE APPLICABLE WARRANTY PERIOD SET FORTH ABOVE.

How State Law relates to warranty:

- Some states do not allow the exclusion nor limitation of incidental or consequential damages, or limitations on how long an implied warranty lasts, so the above limitations or exclusions may not apply to you.
- This warranty gives you specific legal rights, and you also may have other rights that vary from state to state.

If you purchased your unit outside the United States:

- This warranty does not apply. Contact your dealer for warranty information.

Service calls which do not involve defective materials or workmanship are not covered by this warranty. Costs of such service calls are the sole responsibility of the purchaser.

Limited Warranty (Canada)

EN
What your warranty covers:

- Defects in materials or workmanship.

For how long after your purchase:

- One year from date of purchase for labor and parts
- The warranty period for rental units begins with the first rental or 45 days from date of shipment to the rental firm, whichever comes first.

What we will do:

- Pay any Authorized RCA Audio Service Center the labor charges to repair your unit.
- Pay any Authorized RCA Audio Service Center for the new or, at our option, refurbished replacement parts required to repair your unit.

How you get service:

- Take your unit to any Authorized RCA Audio Service Center. To identify your nearest Authorized RCA Audio Service Center, ask your dealer, look in the Yellow Pages, or call 1-800-336-1900.
- Show the Authorized Service Center Representative your evidence of purchase date or first rental.
- Pick up your unit when repairs are completed.
- Proof of purchase in the form of a bill of sale or receipted invoice which is evidence that the product is within the warranty period must be presented to obtain warranty service. For rental firms, proof of first rental is also required.

What your warranty does not cover:

- Customer instruction. (Your Owner's Manual describes how to install, adjust, and operate your unit. Any additional information should be obtained from your dealer.)
- Installation and related adjustments.
- Signal reception problems not caused by your unit.
- Damage from misuse or neglect.
- Cleaning of audio heads.
- Batteries.
- A unit that has been modified or incorporated into other products or is used for institutional or other commercial purposes.
- A unit purchased or serviced outside Canada.
- Acts of nature, such as but not limited to lightning damage.

Product Registration:

- Please complete and mail the Product Registration Card packed with your product. It will make it easier to contact you should it ever be necessary. The return of the card is not required for warranty coverage.

Limitation of Warranty:

- **THE WARRANTY STATED ABOVE IS THE ONLY WARRANTY APPLICABLE TO THIS PRODUCT. NO VERBAL OR WRITTEN INFORMATION GIVEN BY THOMSON MULTIMEDIA LTD., ITS AGENTS OR EMPLOYEES SHALL CREATE A GUARANTY OR IN ANY WAY INCREASE THE SCOPE OF THIS WARRANTY.**
- **REPAIR OR REPLACEMENT AS PROVIDED UNDER THIS WARRANTY IS THE EXCLUSIVE REMEDY OF THE CONSUMER. THOMSON MULTIMEDIA LTD. SHALL NOT BE LIABLE FOR INCIDENTAL OR CONSEQUENTIAL DAMAGES RESULTING FROM THE USE OF THIS PRODUCT. EXCEPT TO THE EXTENT PROHIBITED BY APPLICABLE PROVINCIAL LAW, ANY IMPLIED WARRANTY OF MERCHANTABILITY OR FITNESS FOR A PARTICULAR PURPOSE ON THIS PRODUCT IS LIMITED TO THE APPLICABLE WARRANTY PERIOD SET FORTH ABOVE.**

How Provincial Laws relates to warranty:

- This warranty gives you specific legal rights which are in addition to statutory warranties that may vary from Province to Province.

If you purchased your unit outside Canada:

- This warranty does not apply. Contact your dealer for warranty information.

Service calls which do not involve defective materials or workmanship are not covered by this warranty. Costs of such service calls are the sole responsibility of the purchaser.

Free Manuals Download Website

<http://myh66.com>

<http://usermanuals.us>

<http://www.somanuals.com>

<http://www.4manuals.cc>

<http://www.manual-lib.com>

<http://www.404manual.com>

<http://www.luxmanual.com>

<http://aubethermostatmanual.com>

Golf course search by state

<http://golfingnear.com>

Email search by domain

<http://emailbydomain.com>

Auto manuals search

<http://auto.somanuals.com>

TV manuals search

<http://tv.somanuals.com>