

It's important to read this instruction prior to using your new product for the first time.

### SAFETY PRECAUTIONS



WARNING: SHOCK HAZARD-DO NOT OPEN

AVIS: RISQUE DE CHOC ÉLECTRIQUE-NE PAS OUVRI

\*SEE MARKING ON REAR OF PRODUCT\*

The lightning flash with an arrowhead symbol, within the equilateral triangle, is intended to alert the user to the presence of uninsulated "dangerous voltage" within the product's enclosure that may be of sufficient magnitude to cause an electric shock.

The exclamation point within the equilateral triangle is intended to alert the user to the presence of important operating and maintenance (servicing) instructions in this user manual.

- TO PREVENT FIRE OR SHOCK HAZARD, DO NOT EXPOSE THE UNIT TO RAIN OR MOISTURE.
- TO AVOID ELECTRICAL SHOCK, DO NOT OPEN THE CABINET. REFER SERVICING TO QUALIFIED PERSONNEL ONLY.
- THE APPARATUS SHALL NOT BE EXPOSED TO DRIPPING OR SPLASHING AND THAT NO OBJECTS FILLED WITH LIQUID, SUCH AS VASES, SHALL BE PLACED ON THE APPARATUS.

DO NOT TOUCH THE LENS  
CAUTION: INVISIBLE LASER RADIATION  
WHEN OPEN AND INTERLOCK FAILED OR  
DEFEATED  
AVOID EXPOSURE TO BEAM

CLASS 1 LASER PRODUCT  
APPAREIL À LASER DE CLASSE 1  
PRODUCTO LASER DE CLASSE 1  
PRODUTO LASER CLASSE 1

Double insulation when servicing use only identical replacement parts.



This product contains a low power laser device.

### FCC Information

This device complies with Part 15 of the FCC rules. Operation is subject to the following two conditions:

- (1) This device may not cause harmful interference, and
- (2) This device must accept any interference received, including interference that may cause undesired operation.

**NOTE:** This equipment has been tested and found to comply with the limits for a Class B digital device, pursuant to part 15 of the FCC Rules. These limits are designed to provide reasonable protection against harmful interference in a residential installation. This equipment generates, uses, and can radiate radio frequency energy and, if not installed and used in accordance with the instructions, may cause harmful interference to radio communications. However, there is no guarantee that interference will not occur in a particular installation. If this equipment does cause harmful interference to radio or television reception, which can be determined by turning the equipment off and on, the user is encouraged to try to correct the interference by one or more of the following measures:

- Reorient or relocate the receiving antenna.
- Increase the separation between the equipment and receiver.
- Connect the equipment into an outlet on a circuit different from that to which the receiver is connected.
- Consult the dealer or an experienced radio/TV technician for help.

**WARNING:** Changes or modifications to this unit not expressly approved by the party responsible for compliance could void the user's authority to operate the equipment.

### For Customers in Canada

This apparatus complies with the Class B limits for radio noise emission set out in radio interference regulations.

This Class B digital apparatus complies with Canadian ICES-003.

Cet appareil numérique de la classe B est conforme à la norme NMB-003 du Canada.

### Warnings:

- The AC power plug is used as disconnect device and it should remain readily operable during intended use. In order to disconnect the apparatus from the mains completely, the AC power plug should be disconnected from the mains socket outlet completely.
- Minimum 10 cm (4 inches) distances around the apparatus for sufficient ventilations.
- The ventilation should not be impeded by covering the ventilation openings with items such as newspaper, table-cloths, curtains, etc.
- No naked flame sources such as lighted candles should be placed on the apparatus.

### SAFETY PRECAUTIONS

#### On Safety

As the laser beam used in this compact disc player could be harmful to the eyes, do not attempt to disassemble the casing. Refer servicing to qualified personnel only.

- Do not put any foreign objects in the disc compartment. If you do so, the laser beam interlock may be defeated allowing the laser to remain on when the lid is opened.
- Should any objects or liquids fall into the unit, disconnect the power supply and have the unit checked by qualified personnel before any further operation.

#### On Operation

Since the CD system offers a wide dynamic range, the peaks of the high level inputs are recorded with high fidelity, and the noise level is very low. Do not turn up the volume while listening to a part of the disc with no audio signals or very low level inputs. If you do so, the speakers may be damaged when the peak level of the sound is played. The lens of the laser should be kept clean. Do not touch the lens. If you do so, the lens may be damaged and the unit will not operate correctly.

#### On Use

Never use the unit where it would be subject to:

- Heat sources such as radiators or air ducts.
- Direct sunlight.
- Excessive dust.
- Moisture or rain.
- Mechanical vibration or shock.
- Uneven surface.
- Do not place any heavy objects on top of the unit.
- When the unit is used with an AC power plug, do not wrap the unit in a cloth, blanket, etc. If you do so, the temperature inside and outside the unit may rise considerably, resulting in malfunctioning of the unit.
- If the unit is brought directly from a cold to a warm location, or is placed in a very damp room, the moisture may condense on the lens inside the unit. Should this occur, the unit will not operate. In this case, remove the disc and leave the unit in a warm place for several hours until the moisture evaporates.
- For the unit to operate at its best, it should not be subject to temperatures below 41°F (5°C) or above 95°F (35°C).

#### Additional safety information

- Apparatus shall not be exposed to dripping or splashing and no objects filled with liquids, such as vases, shall be placed on the apparatus.
- Always leave sufficient space around the product for ventilation. Do not place product in or on a bed, rug, in a bookcase or cabinet that may prevent air flow through vent openings.
- Do not place lighted candles, cigarettes, cigars, etc. on the product.
- Connect power plug only to AC power source as marked on the product.
- Care should be taken so that objects do not fall into the product.
- Do not attempt to disassemble the cabinet. This product does not contain customer serviceable components.

#### Precautions

- This compact disc player uses a laser to read the music on the disc. The laser mechanism corresponds to the cartridge and stylus of a record player. Although this product incorporates a laser pick-up lens, it is completely safe when operated according to directions.
- Discs rotate at high speed inside the player. Do not use damaged, warped, or cracked discs.
- Do not touch the pick-up lens which is located inside the disc compartment. To keep dust from collecting on the pick-up lens, do not leave the compartment door open for an extended period of time. If the lens becomes dirty, clean it with a soft brush, or use an air blower brush designed for camera lenses.

#### Headset safety

- Have a Blast-Just Not in your eardrums! Make sure you turn down the volume on the unit before you put on headphones. Increase the volume to the desired level only after headphone are in place.
- Do not play your headset at high volume. Hearing experts warn against extended high-volume play.
- If you experience ringing in your ears, reduce volume or discontinue use.
- You should use with extreme caution or temporarily discontinue use in potentially hazardous situations. Even if your headset is an open-air designed to let you to hear outside sounds, do not turn up the volume so high that you are unable to hear what is around you.
- Excessive sound pressure from earphones and headphone can cause hearing loss.

### IMPORTANT SAFETY INSTRUCTIONS

1. Read these instructions.
2. Keep these instructions.
3. Heed all warnings.
4. Follow all instructions.
5. Do not use this apparatus near water.
6. Clean only with dry cloth.
7. Do not block any ventilation openings. Install in accordance with the manufacturer's instructions.
8. Do not install near any heat sources such as radiators, heat registers, stoves, or other apparatus (including amplifiers) that produce heat.
9. Do not defeat the safety purpose of the polarized or grounding-type plug. A polarized plug has two blades with one wider than the other. A grounding type plug has two blades and a third grounding prong. The wide blade or the third prong are provided for your safety. If the provided plug does not fit into your outlet, consult an electrician for replacement of the obsolete outlet.
10. Protect the power plug from being walked on or pinched particularly at plugs, convenience receptacles, and the point where they exit from the apparatus.
11. Only use attachments/accessories specified by the manufacturer.
12. Use only with a cart, stand, tripod, bracket, or table specified by the manufacturer, or sold with the apparatus. When a cart is used, use caution when moving the cart/apparatus combination to avoid injury from tip-over.
13. Unplug this apparatus during lightning storms or when unused for a long period of time.
14. Refer all servicing to qualified service personnel. Servicing is required when the apparatus has been damaged in any way, such as the power-supply cord or plug is damaged, liquid has spilled or objects have fallen into the apparatus, the apparatus has been exposed to rain or moisture, does not operate normally, or has been dropped.



Portable Cart Warning

### SYSTEM CONNECTIONS

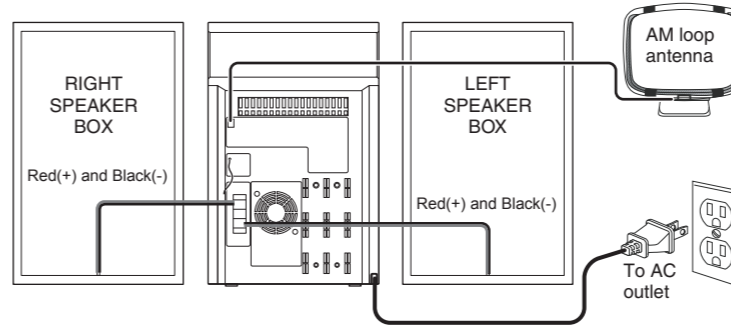
#### Using FM and AM Antennas

Uncoil the FM antenna at the back of the unit, make sure it is fully extended. You'll also need to connect the AM loop antenna to the back of the unit if you listen to AM stations. Rotate the AM loop antenna for better reception.

#### Speaker Connections

Connect the right speaker to the R (R+ & R-) terminals and the left speaker to the L (L+ & L-) terminals.

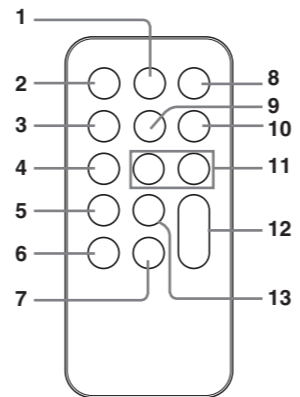
**Note:** Connecting speakers other than the speakers supplied with the unit may damage the unit.



#### CAUTIONS:

- Ensure that the mains supply in your house complies with that indicated on the identification sticker located on the back of your unit. (AC 120V ~ 60Hz)
- If you are not going to use the unit for a long time, disconnect the AC power plug from the wall outlet.
- This unit is designed for continuous use. Switching off the unit to standby mode does not disconnect it from the mains supply. To completely isolate the equipment, remove the plug from the mains jack as some components remain connected to the electrical supply.

### REMOTE CONTROL

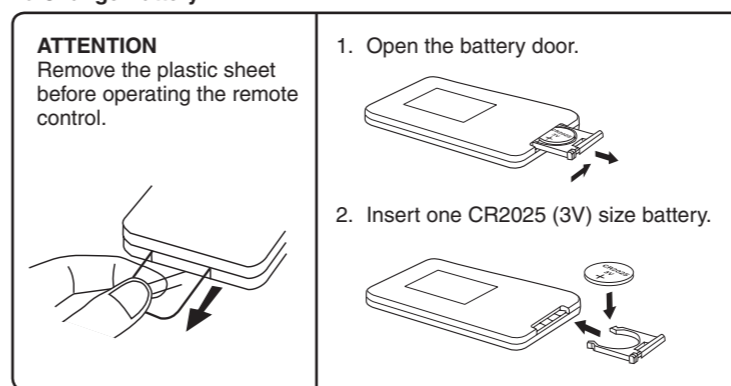


1. PRESET EQ Button
2. ON / STANDBY Button
3. SLEEP Button
4. PROG / MEM / [STOP] Button (same as PROG / MEM / [STOP] button on the unit)
5. RANDOM Button
6. MEM. UP / [REVERSE] Button
7. STOP / BAND Button
8. FUNCTION Button
9. TIMER Button
10. DISPLAY Button
11. [LEFT] / [RIGHT] Buttons
12. VOLUME +/- Buttons
13. [PLAY/PAUSE] Button

#### Using the Remote Control Correctly

- Point the remote control at the REMOTE SENSOR located on the unit.
- When there is a strong ambient light source, the performance of the infrared REMOTE SENSOR may be degraded, causing unreliable operation.
- The recommended effective distance for remote operation is about 19 feet (6 meters).

#### To Change Battery



#### Battery Replacement

When the battery becomes weak, the operating distance of the remote control is greatly reduced and you will need to replace it.

**Note:** If the remote control is not going to be used for a long time, remove the battery to avoid damage caused by battery leakage corrosion.

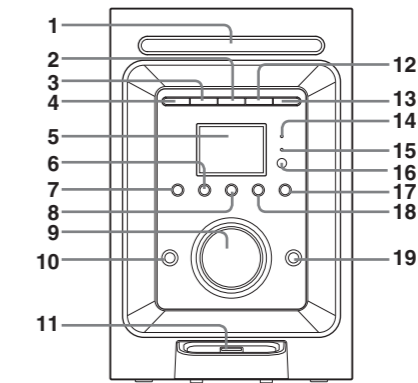
#### WARNINGS:

- Do not dispose of battery in fire; battery may explode or leak.
- Battery shall not be exposed to excessive heat such as sunshine, fire or the like.
- Danger of explosion if battery is incorrectly replaced. Replace only with the same or equivalent type.

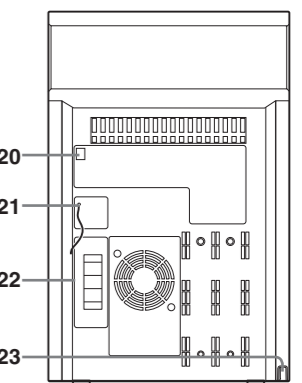
**CAUTION:** When discarding batteries, environmental problems must be considered and local rules or laws governing the disposal of these batteries must be strictly followed.

### LOCATION OF CONTROLS

#### Front View



#### Rear View



1. CD Door
2. [PLAY/PAUSE] Button
3. TUNING + / [SKIP] Button
4. TUNING - / [SKIP] Button
5. LCD Display
6. FUNCTION Button
7. [ON] STANDBY/ON Button
8. PRESET EQ Button
9. VOLUME (- / +) Knob
10. [E] Earphone Jack
11. iPod Docking
12. [STOP / BAND] Button
13. [OPEN / CLOSE] Button
14. Standby Indicator
15. TIMER Indicator
16. Remote Sensor
17. PROG / MEM / [STOP] Button
18. MEM. UP / [REVERSE] Button
19. AUX IN Jack
20. AM Antenna Terminal
21. FM Antenna
22. Right & Left Speaker Terminals
23. AC Power Cord

### VOLUME ADJUSTMENT

#### To Adjust the Volume

Adjust the VOLUME levels to obtain the desired volume.

#### For Personal Listening

Connect headphones (Ø3.5mm stereo mini plug) to the [E] earphone jack. Adjust the VOLUME levels to obtain the desired volume.

When headphones are connected, the speakers are automatically muted.

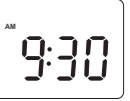
**Warning:** Excessive sound pressure from earphone and headphones can cause hearing loss.

### CLOCK SETTING

Setting the clock can only be done in STANDBY mode.

- If the unit is plugged in with the supplied AC power plug and the unit is in standby mode, the standby indicator illuminates.

1. Press and hold the PROG/MEM/[STOP] button until the hour digits blink.
2. Tap the [LEFT] or [RIGHT] button to adjust the desired hours then tap the PROG/MEM/[STOP] button once to confirm. The minute digits will begin to blink.
3. Tap the [LEFT] or [RIGHT] button to adjust the desired minutes then tap the PROG/MEM/[STOP] button once to start clock.



12:00 PM = NOON time, and "PM" appears.

#### Notes:

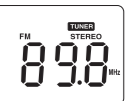
- During CD playback, press the DISPLAY button once to display the current time.
- In RADIO mode, press the DISPLAY button once to display the current time.

### LISTENING TO THE RADIO

1. Press the [ON] STANDBY/ON button to turn the unit on.
2. Press the FUNCTION button to TUNER mode.
3. Press the [STOP/BAND] button to select a band (FM/AM).
4. Press the [LEFT] or [RIGHT] button to tune in to a station.
5. Adjust the volume levels.

#### Searching for a Station Automatically

- Press and hold the [LEFT] or [RIGHT] button until the tuner starts searching for a station, then release. After tuning in a station, the search stops.
- The search may not stop at a station with a very weak signal.



## LISTENING TO THE RADIO

### Presetting Stations

The unit can store a total of 20 stations in memory (10FM, 10AM). Presetting allows you to tune in to a station directly.

1. Tune in to a desired station.
2. Press the **PROG/MEM/** button. The preset number will blink and the "MEM" indicator will be shown on the display.
3. Press the **MEM.UP/** button to select the preset number.
4. Press the **PROG/MEM/** button again to store it in memory.
5. Repeat steps 1-4 to store other stations.

### Tuning in to a Preset Station

Press the **STOP/BAND** button to select AM or FM, then press the **MEM.UP/** button to select a preset number.

### For Better Reception

**FM:** Fully unwind the antenna wire. Extend the antenna wire and place it in the position that sounds best.

**AM:** Rotate the AM loop antenna horizontally until orientation with best reception is found.

### Notes:

- When the reception is good, the "STEREO" indicator will appear on the display.
- Do not connect the FM antenna to an outside antenna.
- To prevent interference to the AM signal, please keep the AC power plug 3.17 feet (1 meter) away from the main unit.

## CD PLAYBACK

1. Press the **STANDBY/ON** button to turn on the unit.
2. Press the **OPEN/CLOSE** button to open the CD door. Place a disc in the center with the label side up and then press the **OPEN/CLOSE** button again to close the CD door.
3. Press the **FUNCTION** button to CD mode. "CD" appears and "-" blinks on the display. Then the total track no. is shown on the display.
4. Press the **PLAY/PAUSE** button to start playing.
  - Adjust the volume levels.

### To Pause Playback

- Press the **PLAY/PAUSE** button.
- To resume playback, press the **PLAY/PAUSE** button again.

### To Stop Playback

- Press the **STOP/BAND** button.

### Skipping to Another Track

- Press either the **REVERSE** or **SKIP** button according to the desired direction. Press the **REVERSE** button to skip to the start of the current track or skip to previous tracks. Press the **SKIP** button to skip to the beginning of the next track.

### Locating a Particular Point on a Track

- Keep either the **REVERSE** or **SKIP** button pressed during playback, according to the desired direction, and release at the desired point.

## REPEAT PLAYBACK

### Repeat Current Track

- Press the **MEM.UP/** button until "REP" blinks on the display. The current track will be played repeatedly.

### Repeat the Entire CD

- Press the **MEM.UP/** button until "REP" stops blinking and remains on. All tracks will be played repeatedly.

### Cancel Playback Mode

- Press the **MEM.UP/** button until repeat indicator disappears.

## RANDOM PLAYBACK

### Random Playback

- Press the **RANDOM** button on the remote control and "R" will be shown on the display. All tracks will be played randomly. After all tracks have played, the unit will stop automatically.

### Cancel Random Playback

- Press the **RANDOM** button on the remote control again during RANDOM playback to return to normal playback.

## PROGRAMMABLE CD PLAYBACK

A program of up to 20 tracks can be set to play in a preset order.

1. In CD stop mode, press the **PROG/MEM/** button and "MEM" & "-" will blink on the display.
2. Press the **REVERSE** or **SKIP** button to select the desired track then press the **PROG/MEM/** button to store the track in memory.
3. To add additional tracks, repeat step 2 (up to 20 tracks).
4. To start playback, press the **PLAY/PAUSE** button.

### To Check the Program

- Press the **STOP/BAND** button and the **REVERSE** or **SKIP** button. Each time the **PLAY/PAUSE** button is pressed, the track number appears on the display.

### To Change the Programmed Tracks during Program Playback

- Press the **STOP/BAND** button and press the **PROG/MEM/** button repeatedly to search the program number, then press either the **REVERSE** or **SKIP** button to select the desired track. Press the **PROG/MEM/** button again to register the newly selected track into program.

### To Erase the Whole Program, Do One of the Following

- Press the **FUNCTION** button to change to radio/iPod/AUX mode.
- Press the **STANDBY/ON** button to turn off the unit.
- Press the **OPEN/CLOSE** button to open the CD door.

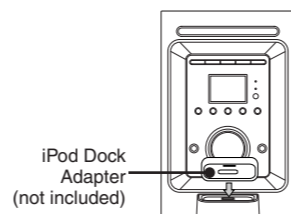
## LISTENING TO YOUR iPod

### Compatible iPod Types

- iPod nano (1st generation) 1GB, 2GB, 4GB
- iPod nano (2nd generation) 2GB, 4GB, 8GB
- iPod nano 3rd generation (video) 4GB, 8GB
- iPod nano 4rd generation (video) 8GB, 16GB
- iPod 5th generation (video) 30GB, 60GB, 80GB
- iPod classic 80GB, 120GB, 160GB
- iPod touch (1st generation) 8GB, 16GB, 32GB
- iPod touch (2nd generation) 8GB, 16GB, 32GB

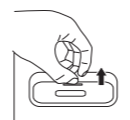
### Installing the iPod Dock Adapter

1. Before connecting your iPod, you need to install the appropriate iPod Dock Adapter (supplied with the iPod or sold separately) in the dock of the unit.
2. Insert your iPod Dock Adapter into the dock until it sits firmly in place.



### Removing the iPod Dock Adapter

1. Remove the iPod Dock Adapter as illustrated in the figure to the right.
2. Replace it with another one you need.



### Inserting Your iPod

1. Ensure the appropriate iPod Docking Adapter is installed.
2. Insert your iPod into the connector in the dock.
3. Press the **STANDBY/ON** button to turn on the unit.
4. Press the **FUNCTION** button repeatedly until the indicator "iPod" appears on the display.
5. Press the **PLAY/PAUSE** button to start playing.

### Notes:

- The iPod will charge automatically (until fully charged) once it is docked in the cradle.
- To prevent interference to AM radio signals, please switch off the iPod while listening to AM Radio.

### Pausing Playback

- Press the **PLAY/PAUSE** button.
- To resume playback, press the **PLAY/PAUSE** button again.

### Skipping to a Another Track

- Press either the **REVERSE** or **SKIP** button according to the desired direction.
- Press the **REVERSE** button to skip to the beginning of the current track or previous track. Press the **SKIP** button to skip to the beginning of the next track.

### Locating a Particular Point on a Track

- Keep either the **REVERSE** or **SKIP** button pressed during playback, according to the desired direction, and release at the desired point.

### Repeat Playback

Repeat lets you play songs repeatedly (a single repeat or all songs repeat).

- Press the **MEM.UP/** button on the remote control. The repeat indicator appears on the iPod screen.
- To cancel repeat playback, press the **MEM.UP/** button until the repeat indicator disappears.

**Note:** Please refer to the owner's manual that was included with your iPod for more details.

### Random Playback

Random plays songs/albums from your iPod in a random order.

1. Press the **RANDOM** button on the remote control once and the random indicator appears on the iPod screen. All songs will be played without sequence.
2. Press the **RANDOM** button on the remote control twice and the random indicator appears on the iPod screen. All songs of this album will be played without sequence.
- To cancel shuffle playback, press the **RANDOM** button until the shuffle indicator disappears.

**Note:** Please refer to the owner's manual that was included with your iPod for more details.

## AUX IN CONNECTION

### Connecting to AUX IN for Other Sound Sources

You can connect audio devices such as your iPod, CD players or MP3 players to the unit via the AUX IN jack. To do this, connect an audio cable from the line out or headphone out jack of the other audio device to the AUX IN jack on the unit's front panel.

### Listening to the Connected Device

1. Press the **FUNCTION** button to AUX IN mode and "AUX" is shown on the display.
2. Turn on the audio device you've attached to the AUX IN jack.

## PRESET EQ

This system supports a variety of equalizers and sound effects.

During playback, press the **PRESET EQ** button to select a desired music mode. Each time the **PRESET EQ** button is pressed, the music mode will be changed to the next one as follows:

OFF -> r oc (ROCK) -> PDP -> CLR (CLASSIC)

## TIMER SETTING

The timer function will turn the unit on at a preset time.

### To Set Timer

1. In standby mode, press and hold the **TIMER** button on the remote control until the **TIMER** indicator blinks.
2. Press and hold the **PROG/MEM/** button until the hour digits blink.
3. Tap the **REVERSE** or **SKIP** button to adjust the desired hours then tap the **PROG/MEM/** button once to confirm. The minute digits will begin to blink.
4. Tap the **REVERSE** or **SKIP** button to adjust the desired minutes then tap the **PROG/MEM/** button once to confirm.
5. Press the **FUNCTION** button to select the timer mode (RADIO, CD or iPod). The "TUNER", "iPod" or "CD" icon will be shown on the display.
  - For RADIO timer, tune in to a desired station.
  - For CD timer, insert a CD into the unit.
  - For iPod timer, insert your iPod into the connector.
6. Press the **- VOLUME +** buttons to adjust the volume levels.
7. Press the **PROG/MEM/** button to confirm. The timer indicator will stop blinking and remain on.
8. The unit will wake up to "RADIO", "iPod" or "CD" when the timer reaches the preset time.

### Notes:

- If timer is set for FM/AM tuner, it will wake up to the last station you tuned in.
- For iPod timer, if no iPod is inserted, it will wake up to radio mode and jump to the last station you tuned in.

### To Cancel Timer

- Press and hold the **TIMER** button on the remote control until the **TIMER** indicator goes out.

## SLEEP TIMER SETTING

The sleep timer automatically turns the unit off after a certain time.

1. While the unit is on, press the **SLEEP** button and "00" appears on the display.
2. Press the **SLEEP** button repeatedly to select the desired sleep time as below:

00 → 90 → 80 → 70 → 60  
↑                      ↓  
10 ← 20 ← 30 ← 40 ← 50

3. After setting a desired sleep time, the "SLEEP" icon will appear.
  4. The unit will automatically turn off once it counts down the sleep time.
- To clear the preset sleep time, press the **SLEEP** button until "00" appears.

## DISPLAY FUNCTION

### CD Mode

1. During playback, press the **DISPLAY** button repeatedly to shuffle between the CD playback mode and the current time.
2. When stopped, press the **DISPLAY** button to shuffle between the total number of CD tracks and the current time.

### Radio Mode

- Press the **DISPLAY** button to shuffle between the current radio station and the current time.

**Note:** In iPod/AUX mode, the current time is always shown on the display.

## TROUBLESHOOTING GUIDE

PROBLEMS	SOLUTIONS
<b>CD</b>	
System does not turn on	<ul style="list-style-type: none"><li>• Make sure AC power plug is secure in the outlet, and outlet has power.</li><li>• Make sure you've selected CD mode.</li></ul>
Disc in place but unit won't play	<ul style="list-style-type: none"><li>• Make sure disc label is facing up.</li><li>• Make sure disc is clean.</li><li>• Pause mode is activated.</li><li>• Disc may be damaged or dirty; check disc.</li></ul>
Disc skips	<ul style="list-style-type: none"><li>• Make sure the unit is on a secure spot. Vibration or jarring can cause the disc to skip.</li></ul>
<b>RADIO</b>	
Poor FM reception	<ul style="list-style-type: none"><li>• Make sure FM antenna wire is fully extended.</li><li>• Electrical interference in your home can cause poor reception. Move the unit away from them (especially those with motors and transformers).</li></ul>
Poor AM reception	<ul style="list-style-type: none"><li>• Rotate the AM loop antenna horizontally until orientation with best reception is found.</li></ul>
<b>iPod</b>	
iPod does not dock properly or does not install properly.	<ul style="list-style-type: none"><li>• Remove your iPod from the dock and check for obstruction on the connectors in the dock and on your iPod.</li></ul>
iPod does not respond to the speaker system.	<ul style="list-style-type: none"><li>• Make sure that your iPod is working properly before docking into the unit. Please refer to your iPod manual for details.</li></ul>

## MAINTENANCE

### Cleaning the Unit

Do not use volatile chemicals on this unit. Clean by lightly wiping with a soft cloth.

### Cleaning the CD

If the CD skips or will not play, the disc may need to be cleaned. Before playing, wipe the disc from the center outwards with a cleaning cloth. After playing, store the disc in its case.

### Handling the disc

Only touch the CD on the edge to avoid finger prints on its surface.

Do not stick paper or tape nor write anything on the surface.

## LIMITED WARRANTY

**AVC MULTIMEDIA ("AVC")** makes the following limited warranty. These limited warranties extend to the original consumer purchaser and is limited to non-commercial user of the product.

### One Year Parts & Labor Warranty

**AVC** products purchased in the United States are warranted to be free from defects in materials or workmanship for a period of one year from the date of their original retail purchase. If the unit fails to conform to this warranty, we will service the product using new or refurbished parts and products, at **AVC's** sole discretion.

During a period of one year from the effective warranty date, **AVC** will provide, when needed, service labor to repair a manufacturing defect at its designated Service Center. To obtain warranty service in the United States, you must first call our **Customer Support Center at 1-800-506-5746 or 1-877-252-6873, during the hours listed in the box below.** The determination of service will be made by **AVC** customer support. **PLEASE DO NOT RETURN YOUR UNIT TO AVC WITHOUT PRIOR AUTHORIZATION.** New or remanufactured replacements for defective parts or products will be used for repairs by **AVC** at its designated Service Center for one year from the defective warranty date. Such replacement parts or products are warranted for an additional one year from the date of repair or replacement. The Customer will be required to ship the unit to the Service Center indicated at the time Customer Support is contacted to make the necessary repairs. The customer is responsible for all transportation charges to the service facility.

### Packaging and Shipping Instruction

When you send the product to the **AVC** service facility you must use the original carton box and packing material or an equivalent as designated by **AVC**.

### Your Responsibility

- (1) You must retain your bill of sale to provide proof of purchase.
- (2) These warranties are effective only if the product is purchased and operated in the U.S.A. or Canada.
- (3) Warranties extend only to defects in material or workmanship, and do not extend to any product or parts which have been lost or discarded, or damage to product or parts caused by misuse, accident, improper operation or maintenance, or use in violation of instructions provided with the product, or to product which has been altered or modified without authorization of **AVC**, or to products or parts thereof which have had the serial number removed or changed.

### Out of Warranty

In the event your product requires repair after the limited warranty period has expired, please contact our Customer Support Center at **1-800-506-5746, 1-877-252-6873** or **www.RCAav.com**

Hours: Monday-Thursday: 9am-7pm, Friday: 9am-5pm, Saturday: 9am-NOON Eastern time.

### Important:

You are responsible for any transportation, shipping or insurance relative to the return of the product to our Product Returns Center.

All warranties implied by state law, including the implied warranties of merchantability and fitness for a particular purpose, are expressly limited to the duration of the limited warranties set forth above. With the exception of any warranties implied by state law as hereby limited, the foregoing warranty is exclusive and in lieu of all other warranties, guarantees, agreements and similar obligations of manufacturer or seller with respect to the repair or replacement of any parts. In no event shall **AVC** be liable for consequential or incidental damages.

No person, agent, distributor, dealer or company is authorized to change, modify or extend the terms of these warranties in any manner whatsoever. The time within action must be commenced to enforce any obligation of **AVC** arising under the warranty or under any statute, or law of the United States or any state thereof, is hereby limited to one year from the date of purchase. This limitation does not apply to implied warranties arising under state law.

This warranty gives you specific legal rights and you may also have other rights, which may vary from state to state. Some states do not allow limitation on how long an implied warranty lasts, when an action may be brought, or the exclusion or limitation of incidental or consequential damages, so the above provisions may not apply to you.

For more information on other products and services, please contact our web site at **www.RCAav.com**

**Important:** Also keep your "Bill of Sale" as proof of purchase.

Model no ..... Product name .....  
Type of set .....  
Serial no ..... Invoice no .....  
Date purchased ..... Dealer name .....

**Specifications and external appearance are subject to change without notice.**

Printed in China

811-669691W021

## Free Manuals Download Website

<http://myh66.com>

<http://usermanuals.us>

<http://www.somanuals.com>

<http://www.4manuals.cc>

<http://www.manual-lib.com>

<http://www.404manual.com>

<http://www.luxmanual.com>

<http://aubethermostatmanual.com>

Golf course search by state

<http://golfingnear.com>

Email search by domain

<http://emailbydomain.com>

Auto manuals search

<http://auto.somanuals.com>

TV manuals search

<http://tv.somanuals.com>