

It's important to read this instruction prior to using your new product for the first time.

IMPORTANT SAFETY INSTRUCTIONS

- Connect power cord only to AC power source as marked on the product.
- Care should be taken so that objects do not fall into the product.
- Do not attempt to disassemble the cabinet. This product does not contain customer serviceable components.
- Main plug is used as disconnect device and it should remain readily operable during intended use. In order to disconnect the apparatus from the mains completely, the mains plug should be disconnected from the mains socket outlet completely.

IF YOUR PRODUCT OPERATES ON BATTERIES, adhere to the following precautions:

- Do not mix old and new batteries.
- Do not mix alkaline, standard (carbon-zinc), or rechargeable (NiCd, NiMH, etc) batteries.
- Any battery may leak electrolyte or explode if disposed of in fire or an attempt is made to charge a battery not intended to be recharged.
- Discard leaky batteries immediately. Leaking batteries can cause skin burns or other personal injury. When discarding batteries, be sure to dispose of them in the proper manner, according to your state/provincial and local regulations.
- Battery shall not be exposed to excessive heat such as sunshine, fire or the like.

FCC information

This device complies with part 15 of the FCC Rules. Operation is subject to the following two conditions: (1) This device may not cause harmful interference, and (2) this device must accept any interference received, including interference that may cause undesired operation.

This equipment has been tested and found to comply with the limits for a Class B digital device, pursuant to part 15 of the FCC Rules. These limits are designed to provide reasonable protection against harmful interference in a residential installation. This equipment generates, uses and can radiate radio frequency energy and, if not installed and used in accordance with the instructions, may cause harmful interference to radio communications. However, there is no guarantee that interference will not occur in a particular installation. If this equipment does cause harmful interference to radio or television reception, which can be determined by turning the equipment off and on, the user is encouraged to try to correct the interference by one or more of the following measures:

- Reorient or relocate the receiving antenna.
- Increase the separation between the equipment and receiver.
- Connect the equipment into an outlet on a circuit different from that to which the receiver is connected.
- Consult the dealer or an experienced radio/TV technician for help.

WARNING: Changes or modifications to this unit not expressly approved by the party responsible for compliance could void the user's authority to operate the equipment.

This Class B digital apparatus complies with Canadian ICES-003.



CAUTION: TO REDUCE THE RISK OF ELECTRIC SHOCK, DO NOT REMOVE COVER (OR BACK). NO USER-SERVICEABLE PARTS INSIDE. REFER SERVICING TO QUALIFIED SERVICE PERSONNEL.

Caution:

This product utilizes a laser. Use of controls or adjustments or performance of procedures other than those specified may result in hazardous radiation exposure. Do not open covers and do not repair yourself. Refer servicing to qualified personnel.



This product contains a low power laser device.

THE LIGHTNING FLASH AND ARROWHEAD WITHIN THE TRIANGLE IS A WARNING SIGN ALERTING YOU OF "DANGEROUS VOLTAGE" INSIDE THE PRODUCT.

THE EXCLAMATION POINT WITHIN THE TRIANGLE IS A WARNING SIGN ALERTING YOU OF IMPORTANT INSTRUCTIONS ACCOMPANYING THE PRODUCT.

WARNING: TO PREVENT FIRE OR ELECTRICAL SHOCK HAZARD, DO NOT EXPOSE THIS PRODUCT TO RAIN OR MOISTURE.

CAUTION: USE OF CONTROLS OR ADJUSTMENTS OR PERFORMANCE OF PROCEDURES OTHER THAN THOSE SPECIFIED MAY RESULT IN HAZARDOUS RADIATION EXPOSURE.

CAUTION: DANGER OF EXPLOSION IF BATTERY IS INCORRECTLY REPLACED. REPLACE ONLY WITH THE SAME OR EQUIVALENT TYPE.

WARNING: MAINS PLUG IS USED AS DISCONNECT DEVICE AND IT SHOULD REMAIN READILY OPERABLE DURING INTENDED USE. IN ORDER TO DISCONNECT THE MAINS PLUG FROM MAINS COMPLETELY, THE MAINS PLUG SHOULD BE DISCONNECTED FROM THE MAINS SOCKET OUTLET COMPLETELY.

For your safety

The AC power plug is polarized (one blade is wider than the other) and only fits into AC power outlets one way. If the plug won't go into the outlet completely, turn the plug over and try to insert it the other way. If it still won't fit, contact a qualified electrician to change the outlet, or use a different one. **Do not attempt to bypass this safety feature.**

CAUTION: TO PREVENT ELECTRIC SHOCK, MATCH WIDE BLADE OF PLUG TO WIDE SLOT, FULLY INSERT.

Technical information

Product: 5 Disc Audio System
Brand: RCA
Model: RS2769iS
Power Supply: 120V ~ 60Hz
Power Consumption: 240 Watts

Service information

This product should be serviced only by those specially trained in appropriate servicing techniques. For instructions on how to obtain service, refer to the warranty included in this Guide.

PLEASE READ AND SAVE THIS FOR FUTURE REFERENCE

IMPORTANT SAFETY INSTRUCTIONS

Some of the following information may not apply to your particular product; however, as with any electronic product, precautions should be observed during handling and use.

- Read these instructions.
- Keep these instructions.
- Follow all warnings.
- Do not use this apparatus near water.
- Clean only with dry cloth.
- Do not block any ventilation openings. Install in accordance with the manufacturer's instructions.
- Do not install near any heat sources such as radiators, heat registers, stoves, or other apparatus (including amplifiers) that produce heat.
- Do not defeat the safety purpose of the polarized or grounding-type plug. A polarized plug has two blades with one wider than the other. A grounding type plug has two blades and a third grounding

prong. The wide blade or the third prong is provided for your safety. If the provided plug does not fit into your outlet, consult an electrician for replacement of the obsolete outlet.

- Protect the power cord from being walked on or pinched particularly at plugs, convenience receptacles, and the point where they exit from the apparatus.
- Only use attachments/accessories specified by the manufacturer.
- Use only with the cart, stand, tripod, bracket, or table specified by the manufacturer, or sold with the apparatus. When a cart is used, use caution when moving the cart/apparatus combination to avoid injury from tip-over.



Portable Cart Warning

- Unplug this apparatus during lightning storms or when unused for long periods of time.

ADDITIONAL SAFETY INFORMATION

- Apparatus shall not be exposed to dripping or splashing and no objects filled with liquids, such as vases, shall be placed on the apparatus.
- Always leave sufficient space around the product for ventilation. Do not place product in or on a bed, rug, in a bookcase or cabinet that may prevent air flow through vent openings.
- Do not place lighted candles, cigarettes, cigars, etc. on the product.

-1-

Important Information

Precautions

- This compact disc player uses a laser to read the music on the disc. The laser mechanism corresponds to the cartridge and stylus of a record player. Although this product incorporates a laser pick-up lens, it is completely safe when operated according to directions.
- Discs rotate at high speed inside the player. Do not use damaged, warped, or cracked discs.
- Do not touch the pick-up lens which is located inside the disc compartment. To keep dust from collecting on the pick-up lens, do not leave the compartment door open for an extended period of time. If the lens becomes dirty, clean it with a soft brush, or use an air blower brush designed for camera lenses.

Headset safety

- Have a Blast-Just Not in your eardrums! Make sure you turn down the volume on the unit before you put on headphones. Increase the volume to the desired level only after headphone are in place.
- Do not play your headset at high volume. Hearing experts warn against extended high-volume play.
- If you experience ringing in your ears, reduce volume or discontinue use.
- You should use with extreme caution or temporarily discontinue use in potentially hazardous situations. Even if your headset is an open-air designed to let you to hear outside sounds, do not turn up the volume so high that you are unable to hear what is around you.
- Excessive sound pressure from earphones and headphone can cause hearing loss.

-2-

Getting Started

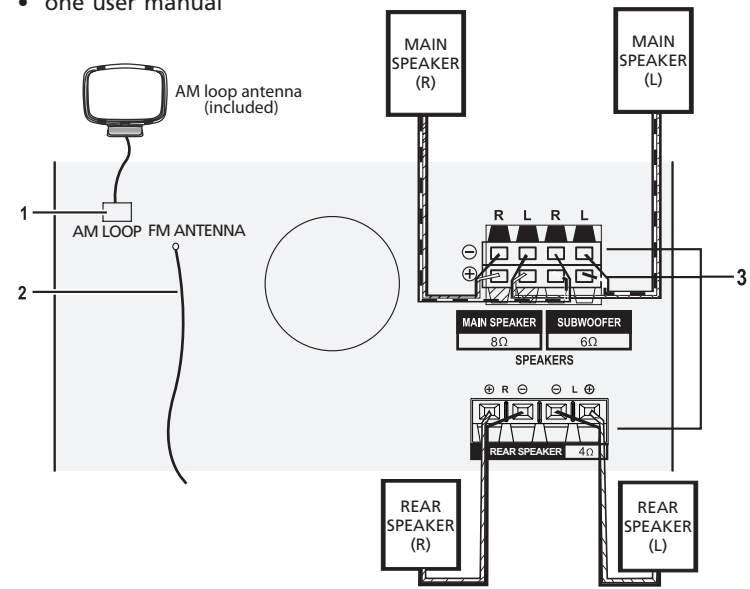
Unpacking the system

- You should have the following:
- one main unit (with two surround speakers)
 - one remote control
 - one AM loop antenna
 - one user manual

Connections

Back view

- AM loop antenna jack
- FM pigtail antenna
- Speaker jacks



-3-

Getting Started

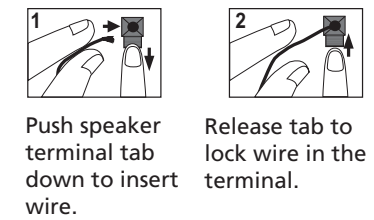
Using FM and AM antennas

Before you use your audio system, you'll want to make sure both the FM and AM antennas are positioned properly. Uncoil the FM antenna at the back of the unit, making sure it is fully extended (you may even want to tape it to the wall behind the unit if possible, the higher the better).

You'll also need to connect the AM antenna loop to the back of the unit if you listen to AM stations. Rotate the AM loop antenna for better reception.

Connecting speakers

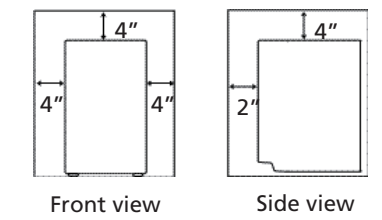
Each speaker wire has different color matching with the speaker jacks on the main unit. When connecting the speakers, match the red wires to red jacks, purple wires to purple jacks, grey wires to grey jacks, and black wires to black jacks. Be sure to connect the large main speakers to the terminals marked "MAIN SPEAKER" and "SUBWOOFER". Connect the smaller rear "surround" speakers to the terminals marked "REAR SPEAKER".



NOTE: Make sure the insulation is completely removed from the ends of the speaker wires at all connection points.

Installation

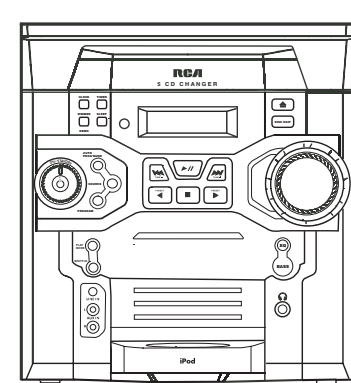
To ensure sufficient ventilation, keep the spacing shown below free from other surfaces:



-4-

Unit Controls

Main Unit



PROGRAM – To enter program mode for CD and tuner.

CLOCK – To show time and enter clock setting mode.

TIMER – To turn the timer on/off; press and hold to enter the timer setting mode.

DIMMER•DEMO – To turn the feature demonstration on or off; to adjust display brightness.

SLEEP – To select the time interval in minutes before the unit turns off.

▲ – To open or close the disc tray.

DISC SKIP – To skip to the next CD in the tray in CD mode.

VOLUME – To increase/decrease the volume.

⏪ / ⏩ – To tune radio frequency; to skip CD/iPod track; to fast search through current CD/iPod track.

-5-

Unit Controls

▶/⏸ – To play or pause CD/iPod.

■ – To stop CD/iPod playback.

PRESET ◀ / ▶ – To select the previous or next preset stations in tuner mode.

SHUFFLE – To turn on/off random playback.

PLAY MODE – To cycle between different play mode.

LINE IN – 3.5mm jack for external audio sources.

AUX IN/L/R – Jacks for external audio sources.

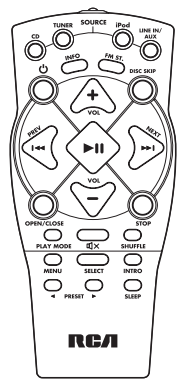
BASS – To turn BASS on or off.

EQ – To select the equalizer presets.

🎧 – Jack for connecting headphones

Remote Control

Remote control



⏻ – To turn power on or off (STANDBY mode).

CD – To select the CD player.

TUNER – To select the tuner and change the radio band.

INFO – To select among disc display information.

iPod – To select iPod playback.

-10-

Remote Control

FM ST. – To switch between ST on and off modes.

LINE IN/ AUX – To select the external sound input from LINE IN/ AUX IN jacks.

DISC SKIP – To skip to next CD in CD mode.

VOL+ / VOL- – To increase/decrease the volume.

▶/⏸ – To play and pause CD/iPod playback.

PREV/⏪, NEXT/⏩ – To tune radio frequency; to skip CD/iPod track; to fast search through current CD/iPod track.

OPEN/CLOSE – To open and close CD disc tray.

STOP – To stop playing CD/iPod.

PLAY MODE – To cycle between different play mode.

🔇 – To mute and restore audio output.

SHUFFLE – To turn on/off random playback.

MENU – To display iPod menu; and return to previous menu.

SELECT – To confirm iPod menu lists.

INTRO – To turn INTRO mode on or off to play the first 10 seconds of each track.

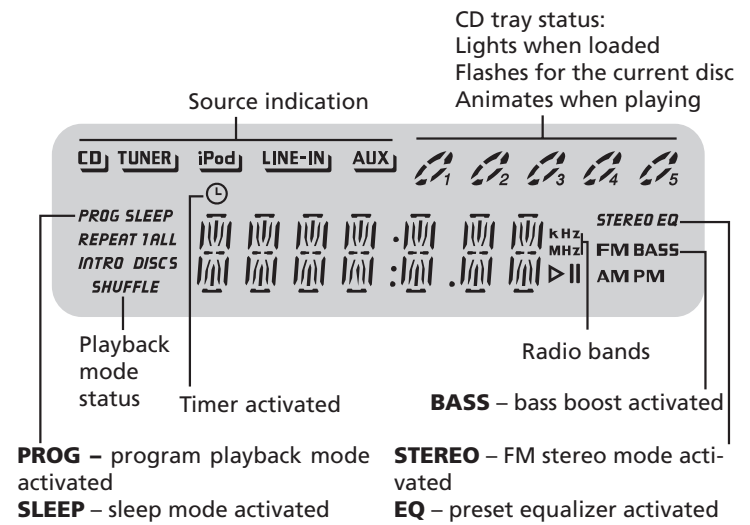
◀ **PRESET** ▶ – To select previous / next tuner preset station; to navigate the iPod menu list.

SLEEP – To select the time interval in minutes before the unit turns off.

The remote control must be inserted with 2 "AAA" batteries prior to use.

-11-

Display



PROG – program playback mode activated
SLEEP – sleep mode activated

Product demonstration mode
Press **DIMMER•DEMO** to turn on/off demonstration mode. The demonstration scrolls through all display operations.

STEREO – FM stereo mode activated
EQ – preset equalizer activated

Display brightness
1. Press and hold **DIMMER•DEMO** for more than 2 seconds.
2. While "DIM" is displayed, press **DIMMER•DEMO** repeatedly to select the desired level (DIM 1-3).

-12-

-8-

Clock and Timer

Setting the clock

- Press and hold **CLOCK** until the hour flashes on the display.
- Press ⏪ / ⏩ to set the hour and then press **CLOCK** to shift to minute digits.
- Press ⏪ / ⏩ to set the minute.
- Press **CLOCK** to save settings.

- When system is ON, you can tap **CLOCK** to display the current time – it will display time for about 2 seconds.
- When the system is OFF (standby), the display will turn off to save power.

Setting the timer

- For RADIO timer, tune in to a desired station.
- For CD timer, insert a CD into the unit.
- For iPod timer, insert your iPod into the connector.
- Press and hold **TIMER** until ON (timer on time) appears with the hour flashing.
- For setting time, press ⏪ / ⏩ to set the hour and then press **TIMER** to shift to the minute digits.
- Press ⏪ / ⏩ to set the minute.
- Press **TIMER** to change to OFF (timer off time) with hour flashing. Repeat steps 2 & 3 for timer off time setting.
- Press **TIMER** to select the source. Press ⏪ / ⏩ to select among TUNER, CD or iPod.
- Press **TIMER** to set the volume. Adjust the timer volume by pressing ⏪ / ⏩ to select the desired volume level.

-13-

Clock and timer

Note: To avoid startling you or other individuals in your home, this product will not turn on at a volume higher than 15.

Activating the timer
Tap **TIMER** to turn on/off the timer. The timer is active when the clock icon ☀ is lit.

Sleep mode

You can select the time interval in minutes before the unit turns off automatically.

- Press **SLEEP** to select among OFF, 120, 90, 60, 45, 30, 15, 10 and 5 minutes. The sleep icon lights on the display when sleep mode is activated.
- When sleep is activated, press **SLEEP** once to view remaining sleep time. Press **SLEEP** again when the remaining sleep time is displayed to change the sleep time.
- Sleep is automatically deactivated when the unit is turned off.

-14-

Sound Features

Bass boost

Press **BASS** to turn on/off boosting the bass frequency. The BASS icon lights on the display when it is activated.

Muting audio

Press 🔇 on the remote control to cut or restore the sound.


Using preset equalizer curves

Press **EQ** on the unit to select among FLAT, ROCK, POP, JAZZ, CLASSIC and CUSTOM. The display shows your selection briefly.

Creating a Custom Curve

- Press **EQ** on the unit to select the CUSTOM mode.
- While CUSTOM is displayed, press ⏪ / ⏩ to cycle among the displayed BASS and TREB range levels.
- While BASS or TREB is displayed, adjust the volume to set the associated gain between -10 - +10.
- Press **EQ** to exit.

CD Playback

 This unit is compatible with CD-RW/ CD-R discs for playback.

Notes on CD-RW Disc:

- Do not affix any type of labels to either side (recordable or labeled side) of a CD-R/RW disc as this may result in the unit malfunctioning.
- To avoid damages to the CD-R/RW disc, do not open the disc compartment door while the disc is being read.
- Do not load an unrecorded CD-R/RW disc into the unit. This may take a longer time to read the disc.
- Playback capability for CD-RW discs may vary due to variations in the quality of the CD-RW disc and the recorder used to create the disc.

Please take care when loading or unloading discs in the disc drawer. Read below for details.

- Remove all discs from the disc drawer before moving or transporting the unit.
- Do not put discs in the trays of the disc drawer when they are still moving.
- Do not push or force the rotation of the disc trays. Always use the **DISC SKIP** button.
- Do not put discs in any unexposed disc trays. Only put disc in tray that is fully exposed.**
- If an error occurs and the disc drawer does not close, empty all disc trays and try again.

-15-

Radio

Press **SOURCE** or **TUNER** on the remote control to select TUNER.

Selecting tuner band

Press **AUTO PROG•BAND** on the unit or **TUNER** on the remote control to select between AM and FM radio bands.

Tuning to a station

Press **◀ / ▶** to select frequencies. Press and hold to start auto searching for the next available station.

Preset and tune modes

The tuner can be in either TUNER or PRESET mode. When in PRESET mode, the PROG indicator is on.

Presetting stations

- Manually setting presets**
- Press **◀ / ▶** to access the desired frequency.
 - Press **PROGRAM** button.

The most recently accessed program location will be displayed.

- If a different program location is preferred, press **◀ / ▶** to select the desired preset number (1-32).
- Press **PROGRAM** to store the selected frequency at that preset.

Auto preset programming (FM only)

Press and hold **AUTO PROG•BAND** for 2 seconds to scan stations in the FM band. The stations will then be stored as preset channels. A maximum of 32 stations can be stored.

Beware of your preset channels being erased accidentally because the scanning and storing process is automatic upon pressing and holding the button for 2 seconds.

-20-

Limited Warranty

AVC MULTIMEDIA ("AVC") makes the following limited warranty. This limited warranty extend to the original consumer purchaser and is limited to non-commercial use of the product.

One Year Parts & Labor Warranty

AVC products purchased in the United States or Canada are warranted to be free from defects in materials or workmanship for a period of one year from the date of their original retail purchase. If the unit fails to conform to this warranty, we will service the product using new or refurbished parts and products, at **AVC's** sole discretion.

During a period of one year from the effective warranty date, **AVC** will provide, when needed, service labor to repair a manufacturing defect at its designated Service Center. To obtain warranty service in the United States or Canada, you must first call our **Customer Support Center at 1-877-252-6873, during the hours listed in the box below.** The determination of service will be made by **AVC** Customer Support. **PLEASE DO NOT RETURN YOUR UNIT TO AVC WITHOUT PRIOR AUTHORIZATION.** New or remanufactured replacements for defective parts or products will be used for repairs by **AVC** at its designated Service Center for one year from the effective warranty date. Such replacement parts or products are warranted for an additional one year from the date of repair or replacement. The Customer will be required to ship the unit to the Service Center indicated at the time Customer Support is contacted to make the necessary repairs. The customer is responsible for all transportation charges to the service facility.

-25-

CD Playback

Loading discs

- Press **SOURCE** repeatedly to select CD mode.
- Press **OPEN/CLOSE** or **▲** to open the drawer.
- Insert up to five discs with label face up. (Press **DISC SKIP** to rotate the disc carrier.)
- Press **OPEN/CLOSE** or **▲** to close the drawer. Loaded disc position icon lights.

Selecting discs

Press **DISC SKIP** to skip discs.

Playing discs

- Press **▶** to begin or pause playback, and **■** to stop playback.
- Press **◀ / ▶** to select a specific track.

Searching through a CD

Press and hold **◀ / ▶** to search through a CD while it is playing.

Shuffling play order

Press **SHUFFLE** to turn on/off the playing of tracks in random order.

Sampling tracks

Press **INTRO** to play the first 10 seconds of each track on the current disc, all discs in the tray, or turn INTRO mode off.

Play mode

Press **PLAY MODE** to cycle between Repeat 1, Repeat 1 Disc, Repeat All Discs, 1 Disc, and All Discs.

-16-

Radio

You can stop the automatic scan by pressing **TUNE+TUNE-** button, but the erased stations cannot be recovered.

Using presets

Press **◀ PRESET ▶** to access the previous or next preset station. The display first shows the preset program number and after a few seconds, the frequency will be displayed. (e.g. P 01 is preset 1)

Suppressing stereo signal

Press **FM ST.** to select between ST ON and ST OFF for stereo FM stations.

LINE IN/ AUX

Play external sound through the speaker system

Press **SOURCE** on the unit repeatedly to select LINE IN or AUX mode. Or press **LINE IN/AUX** on the remote control to change to LINE IN mode from CD, TUNER or iPod mode; press **LINE IN/AUX** again to change to AUX mode.

Suggest using Ø3.5mm LINE IN jack for mp3 player and AUX IN jacks for auxiliary equipment such as DVD, VCR or PC.

CD Playback

- Press **INFO** repeatedly to view elapsed track time, track remain time and disc remain time during playback.
- You may also press **PLAY MODE** to select 1 disc or all discs before activating INTRO & SHUFFLE functions.

-17-

Troubleshooting Tips

System will not turn on

- Check power cord for a secure connection.
- Unplug the unit for a moment, and then plug into power source again.
- Check the outlet by plugging in another device.

No sound

- Increase the volume setting.
- Check connection to speakers.
- Check that you have selected the appropriate function: CD, TUNER, iPod, LINE IN/AUX.
- Make sure mute is off.
- Make sure headphones are not plugged in.

Poor radio reception

- Check antenna connection.
- Move antenna.
- Turn off nearby electrical appliances, such as hair dryer, vacuum cleaner, microwave, fluorescent lights.

CD does not play

- Check that CD is in the tray.

CD Program

You can program the CD player to play up to any 32 tracks on the CDs in the tray.

- While the CD player is stopped, press **PROGRAM** to enter program mode. The system displays the next available program number: "-- P 01," with "--" flashing, prompts you for the first track in the program list.
- Press **◀ / ▶** to select a track (Press **DISC SKIP** to select a track from a different disc).
- Immediately press **PROGRAM** to assign the selected track to the program number. You are prompted for the next track in the program list. (In CD program mode, PROG icon will be lit.)

CD Program

Playing a program List
While in PROGRAM mode, press **▶**.

Displaying the program List

- While the CD player is stopped, press **PROGRAM** to enter PROGRAM mode.
- Press **PROGRAM** repeatedly to list each track assignment in the program list.

Deleting program List

While in PROGRAM mode, press and hold **■** for 3 seconds. The unit displays the message "CLEAR".

-18-

Troubleshooting Tips

Remote control does not work

- Check that the batteries are properly installed.
- Replace weak batteries.
- Check the system is plugged into power source.
- Point the remote directly at the system's front panel.
- Move closer to the system.
- Remove any obstacles between the remote and the system.

iPod does not respond to the speaker system

- Remove your iPod from the dock and check for obstruction on the connectors in the dock and on your iPod.
- Make sure that your iPod is working properly before docking into the unit. Please refer to your iPod manual for details.

CD button will not respond, or does not change discs when you press DISC SKIP

- Switch to another function (TUNER, iPod, LINE IN/AUX) and then back to CD.

Additional Information

Disconnect the audio system from the power source before performing any maintenance.

Cleaning

Clean the exterior of the system using a soft dust cloth.

CD Player

CAUTION! This system operates with a laser. It must be opened by only a qualified technician.

Handling CDs

- Do not touch the signal surfaces. Hold CDs by the edges, or by one edge and the hole. Do not affix labels or adhesive tapes to the label surfaces. Do not scratch or damage the label. CDs rotate at high speeds inside the player. Do not use damaged (cracked or warped) CDs.

Cleaning CDs

- Dirty CDs can cause poor sound quality. Always keep

-23-

Limited Warranty

No person, agent, distributor, dealer or company is authorized to change, modify or extend the terms of these warranties in any manner whatsoever. The time within action must be commenced to enforce any obligation of **AVC** arising under the warranty or under any statute, or law of the United States or Canada or any state thereof, is hereby limited to one year from the date of purchase. This limitation does not apply to implied warranties arising under state law.

This warranty gives you specific legal rights and you may also have other rights, which may vary, from state to state. Some states do not allow limitation on how long an implied warranty lasts, when an action may be brought, or the exclusion or limitation of incidental or consequential damages, so the above provisions may not apply to you.

For more information on other products and services, please visit our web site at **www.RCAav.com**

-28-

© 2009 AVC MULTIMEDIA

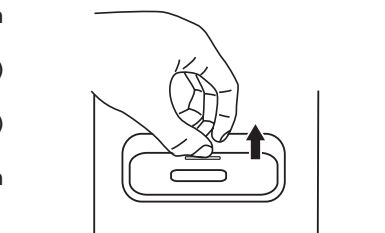
iPod Playback

(dock adapter is not included with this Audio System)

- Insert your iPod Dock Adapter into the dock until it sits firmly in place.

Removing an iPod Dock Adapter

Remove the iPod Dock Adapter as illustrated.



Listening to your iPod

Insert your iPod into the connector in the dock.

- Press **▶** to begin or pause playback, and **STOP/■** to stop playback.
- Press **◀ / ▶** to select a specific

track. (You may also use the control wheel and keys on your iPod to operate it.)

- Press and hold **◀ / ▶** to search through a track while it is playing.
- Press **MENU** to display iPod menu, press again to return to previous menu.
- Press **◀ PRESET ▶** on the remote control to navigate iPod menu lists.
- Press **SELECT** to pick item in iPod menu list.

Your iPod will be charged automatically (until fully charged) once it is docked.

iPod charging function is inactive when the main unit is on standby position and powered off.

- To prevent interference to AM radio signals, please switch off the iPod while listening to AM Radio.

-19-

Additional Information

CDs clean by wiping them gently with a soft cloth from the inner edge toward the outer perimeter.

- If a CD becomes dirty, wet a soft cloth in water, wring it out well, wipe the dirt away gently, and then remove any water drops with a dry cloth.
- Do not use record cleaning sprays or antistatic agents on CDs. Also, never clean CDs with benzene, thinner, or other volatile solvents which may cause damage to disc surface.

CD Lens Care

When your CD lens gets dirty it can also cause the system to output poor sound quality. To clean the lens you will need to purchase a CD lens cleaner which can maintain the output sound quality of your system. For instructions on cleaning the CD lens, refer to the ones accompanying the lens cleaner.

Technical specifications

Power supply: 120V~60Hz
Dimensions (W x D x H inches):
Unit size - 11.0 x 17.3 x 12.0
Main unit weight: 16.06 lbs
CD player: Response curve (+/- 2dB): 60Hz to 15 kHz
Rating Plate: Look for it at the back of the set.

The descriptions and characteristics given in this document are given as a general indication and not as a guarantee. In order to provide the highest quality product possible, we reserve the right to make any improvement or modification without prior notice. The English version serves as the final reference on all products and operational details should any discrepancies arise in other languages.

-24-

Limited Warranty

Important: Also keep your "Bill of Sale" as proof of purchase.

Model no.
Product name
Type of set.
Serial no.
Invoice no.
Date purchased
Dealer name

FOR SUPPORT, SERVICE AND REPAIR, PLEASE VISIT **www.RCAav.com**
Specifications and external appearance are subject to change without notice.

811-278691W010
Printed in China

12/8/2009 3:45:31 PM

Free Manuals Download Website

<http://myh66.com>

<http://usermanuals.us>

<http://www.somanuals.com>

<http://www.4manuals.cc>

<http://www.manual-lib.com>

<http://www.404manual.com>

<http://www.luxmanual.com>

<http://aubethermostatmanual.com>

Golf course search by state

<http://golfingnear.com>

Email search by domain

<http://emailbydomain.com>

Auto manuals search

<http://auto.somanuals.com>

TV manuals search

<http://tv.somanuals.com>