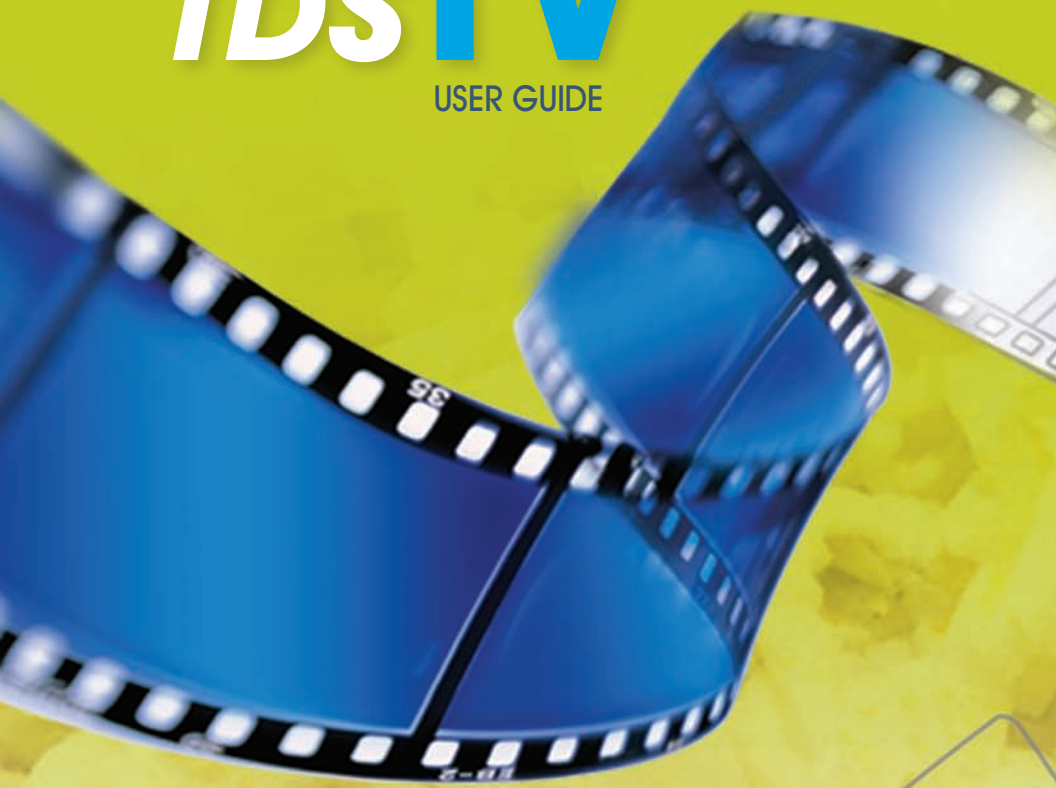


TDS TV[®]

USER GUIDE



Broadband. [Digital TV](#). Phone.

615-773-9033

www.tdstv.com

Del Webb[®]

WELCOME TO TDS TV®!

We're happy to have you as a customer.

Now you can enjoy hundreds of the best television and audio channels, all broadcast in 100% digital format. That means better picture and sound quality for your viewing and listening enjoyment.

We're Committed to You.

TDS is committed to customer satisfaction. So, if you ever encounter issues or have questions about TDS TV, please call **615-773-9033**. A TDS representative will gladly provide the personal assistance you need—and deserve!

We're Here For You.

And remember, TDS is more than a TV provider—we're a Broadband and phone company too. So, for all your communications needs, turn to TDS. We'll provide you with reliable services at affordable rates!

Thanks again for choosing TDS. We really appreciate your business.

TABLE OF CONTENTS

Introduction	1
How It Works	
Set-Top Box	2
Remote Control	5
System Features	10
On-Screen Guide	10
Settings	10
Using TDS TV	
Turning the System On	11
Selecting an Operating Mode	11
Security Measures	11
On-Screen Menu	12
On-Screen Guide	13
Selecting Channels	15
Setting Parental Controls	16
Accessing Vault	20
Changing Settings	25
Favorites	28
Searching the Guide	31
System Password and PIN	
Changing System Password	32
Changing/Disabling PIN	33
Troubleshooting Guide	35
Emergency Alert System	38
Universal Remote Control Codes	39

INTRODUCTION

With TDS TV entertainment is made easy!

Now you'll enjoy:

- 100% digital channels
- Superior picture and sound quality
- Universal Remote Control—one remote controls your TV, DVD player, VCR, and Home Theater System
- On-screen Interactive Program Guide (IPG) for customized viewing and program scheduling
- Parental controls—take the worry out of what's on TV

HOW IT WORKS

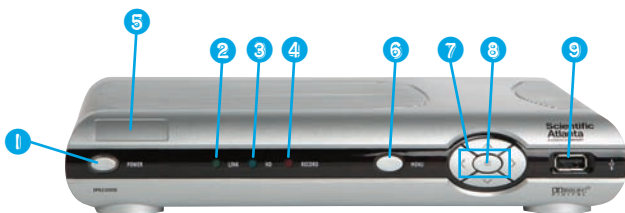
TDS TV receives digital signals and transmits them through a set-top box (STB). Use the Universal Remote Control (included) to access and manage your system's services.

SET-TOP BOX

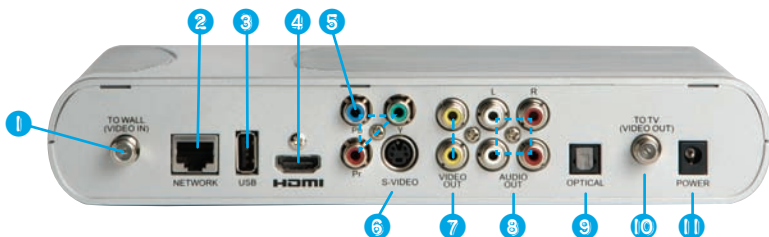
There are two set-top box models available, the Scientific Atlanta 330 and the Scientific Atlanta 430. Both models can be enabled to receive HD channels, while the Scientific Atlanta 430 features a Digital Video Recorder (DVR).

The following details are provided for informational purposes only. Do not change or alter any of the equipment installed by TDS.

At times, TDS may need the MAC1 address for your set-top box. This will allow us to provide new services remotely, without sending a technician to your home. The 12-character MAC1 address is printed on the label on the bottom of the STB.



- | | | |
|---|------------------|--|
| 1 | Power | Turns the set-top box device on or places it in standby. The LED is green. |
| 2 | Link | Indicates network link status. The LED is green. |
| 3 | HD | Indicates that a high-definition program is in progress. The LED is blue. |
| 4 | Record | Indicates that a program is being recorded. |
| 5 | IR Sensor | Receives a signal from the Universal Remote Control. |
| 6 | Menu | Access the TDS TV On-Screen Guide. |
| 7 | Arrows | Navigate the On-Screen Guide and menus. |
| 8 | OK | Selects the current item. |
| 9 | USB Port | Not used at this time. |



-
- 1
To Wall (Video In)
Connect the set-top box device to in-house coax wiring, if applicable. This signal is used to receive an Ethernet-over-coaxial signal.

 - 2
Network
Connect to the Ethernet (CAT-5) network in your home, if applicable.

 - 3
USB Port
Connect external USB equipment approved by your service provider to this port.

 - 4
HDMI
Connect an HDTV HDMI™ (High Definition Multimedia Interface) cable from the HDTV to the HDMI port. HDMI supports both digital audio and video.

 - 5
PrPbY
Connect the set-top box device to the component video input (PrPbY) on the high definition TV (HDTV).

 - 6
S-Video
Connect an S-Video cable to send an S-Video signal to your TV or VCR. This signal is standard definition (SD) but higher quality than other SDTV connections.

-
- 7 Video Out** Connect to either a VCR or connect to another set of inputs (composite) on you HDTV or SDTV.
-
- 8 Audio Out (L/R)** Connect RCA-type cables to Audio Out to send analog audio signals (left and right) to a TV with stereo inputs or to a stereo amplifier.
-
- 9 Optical** Connect an optical cable to send a digital audio signal to a surround-sound receiver or other digital audio device.
-
- 10 To TV (Video Out)** Connect to TV. This is a channel 3/4 output. You must set the channel on your TV to the correct channel (either channel 3 or 4).
-
- 11 Power** Connect the DC output of the AC power adapter (provided) to deliver power to the set-top box.
-

REMOTE CONTROL

TDS TV includes a Universal Remote Control, which is programmed to work with your TDS TV set-top box. Use the remote to turn power on/off, navigate through channels, and move within screens. Selections are confirmed by pressing OK. The STB receives signals from the remote. So be sure to point the remote at the STB.

Programming Your Universal Remote

The Universal Remote Control can be programmed to operate other devices such as your TV, DVD, Home Theater System, or VCR.

1. Refer to the code tables at the end of this guide (pg. 38) for the codes needed to program your remote.
2. Turn on the device that you want to assign to a mode key.
3. Press and hold the appropriate mode key (TV, DVD, or AUX) on the remote, then press and hold the OK key.
4. Release both keys and the mode keys will flash twice.
5. Enter the first 4-digit setup code for device using the number keys (0-9) on the remote. The mode key will flash three times to indicate that the code entry was accepted.
 - * When an invalid code is entered, the selected mode key will display a long flash to indicate that you have not entered the code correctly.
 - * If the remote times-out before you complete the code setup, you will need to start over. This is indicated by one long flash of the red LED.

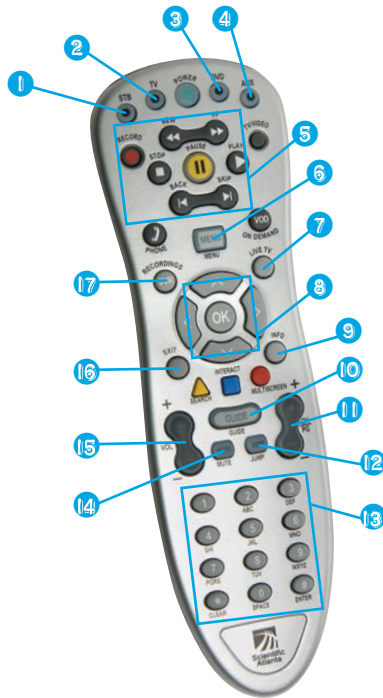
6. Point the remote at the device, and press POWER to test the device.

7. Did the device power off?

* If yes, write down the code that worked in this guide. You may need it again if the device code is accidentally erased.

* If no, repeat this procedure from step 3 using a different setup code.

Common uses for remote keys are noted in the step-by-step procedures throughout this guide.



- 1
STB Controls set-top box

- 2
TV Controls TV

- 3
DVD Controls DVD player

- 4
AUX Controls auxiliary components (e.g., stereo receiver, VCR, etc.)

- 5
DVR/DVD/VCR Controls Controls playback

- 6
Menu Displays menu of services or options

- 7
LIVE TV Returns to viewing live TV

- 8
Arrows/OK Navigates menus and guides/

- selects current item
- 9 INFO** Displays program details
 - 10 Guide** Displays channel listings/favorites
 - 11 Channel Buttons** Changes channels, up or down
 - 12 JUMP** Returns to the last channel viewed
 - 13 Number Buttons** Enters a channel number, text, PIN, or password
 - 14 MUTE** Turns sound off/on
 - 15 Volume Buttons** Changes volume, up or down
 - 16 EXIT** Returns to previous feature
 - 17 DVR Recordings** Accesses recorded programming

SYSTEM FEATURES

Use the on-screen Menu to access system features like Digital TV, Guide, Movies, Music, and Settings.

ON-SCREEN GUIDE

The TDS TV On-Screen Guide provides the most up-to-date program information in an easy-to-use, intuitive format. Use visual cues on the Guide to view, browse, and search program listings, as well as purchase pay-per-view (PPV) programs.

You can access up to one week of programming information with the On-Screen Guide. The "picture in guide" function allows you to scan the guide while watching a program.

SETTINGS

Change your system Personal Identification Number (PIN), manage Favorites, maintain Parental Controls, and adjust System Settings in one location. You can alter and use the Purchase and System PINs as necessary.

USING TDS TV

TURNING THE SYSTEM ON

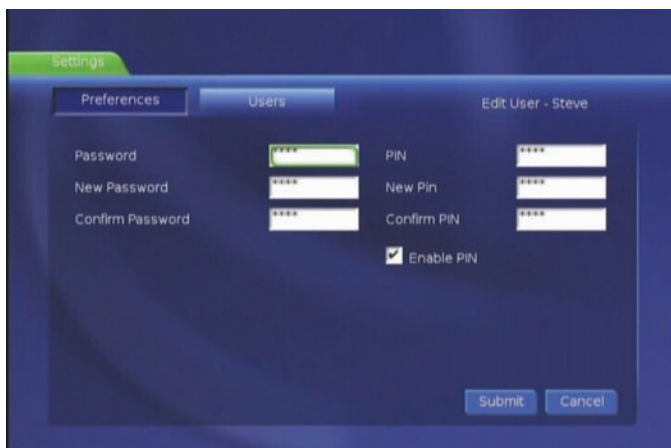
- On the remote, press TV, then Power (the TDS TV system will begin loading)

SELECTING AN OPERATING MODE

You must ensure that your TDS TV Universal Remote Control is in the correct operating mode:

- To control your TDS TV set-top box, press the STB button on the remote control
- To control your TV, press the TV button
- To control your VCR or DVD player press the AUX button

SECURITY MEASURES



The screenshot shows the 'Settings' menu with the 'Users' tab selected. The current user being edited is 'Steve'. The form contains the following fields and options:

Field	Value
Password	****
New Password	****
Confirm Password	****
PIN	****
New Pin	****
Confirm PIN	****
Enable PIN	<input checked="" type="checkbox"/>

Buttons: Submit, Cancel

To ensure you have control over your TDS TV

account, TDS provides you with:

- A 4-digit numeric password that is used to access various settings
- A numeric personal identification number (PIN) used to make purchases

ON-SCREEN MENU



Navigate TDS TV using the on-screen Menu, which displays a list of main features available on the system.

1. Press MENU on the remote.
2. Use the arrow keys and press OK to choose a Menu option. The system jumps to the selected feature.

ON-SCREEN GUIDE



Access detailed program information, locate your favorite shows, and more.

Understanding Color Coding

The Guide is color-coded to let you easily differentiate the type of programs available.

Colors include:

Description	Box	Channel
Movie	Purple	Green (Non-PPV) Red (PPV)
Regular Programming	Blue	Green (Non-PPV) Red (PPV)

Viewing Program Information

1. Press GUIDE to access the program list
 - Use the navigational arrow keys to browse programs. The Guide advances in 30 minute increments, displaying future programming. A highlight appears around a selected channel.
 - Pressing the SKIP button advances the program listing 12 hours. The BACK button returns you to current date and time.
 - Use CH +/- to preview channels in the upper right corner from the Guide.
2. Highlight a program.
3. Press OK to change to the channel or press INFO to display program information. Press INFO again to clear information and return to the Guide.
4. Use the arrow keys and press OK to browse other channels in the Guide.

Accessing Audio Channels

TDS TV offers a variety of audio channels to TDS TV Expanded Plus customers. The On-Screen Guide displays basic program information for an individual audio selection as channels are changed. The system also displays title, track, and artist information. To access audio channels:

1. Press GUIDE and use one of the following methods to view/select a music channel:
 - Press CH +/-.
 - Use the numeric keypad to type audio channel number.

SELECTING CHANNELS

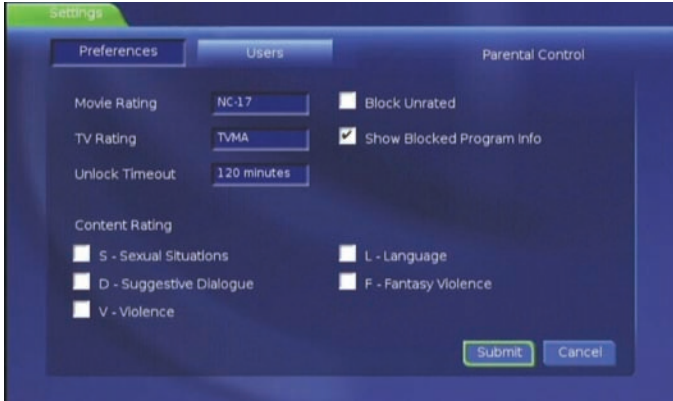
NOTE: If the remote does not function properly, ensure it is accurately programmed for compatibility with your brand of television.

To view a channel or change channels, use one of the following methods:

- Enter the channel number (e.g. 04 or 812) and press ENTER using the numeric keypad on the remote.
- Press CH +/-.
- Press GUIDE and use the navigation arrows to browse listings.
- Press JUMP to return to previous channel.

Program information (channel, network, title, air-time, duration, and description) appears briefly as channels change. This information appears depending on system settings.

SETTING PARENTAL CONTROLS



TDS TV includes advanced parental control features that enable you to restrict the types of programming that can be viewed. These controls can be set for your entire account or you can create additional TDS TV accounts, each with their own set of controls. For example, you can create accounts for your children that have more restrictions. These additional accounts are known as sub accounts.

Setting Parental Controls for the Main Account

1. Press MENU on the remote control.
2. Select Settings and press OK on the remote.
3. Enter your password and press OK on the remote.
4. The Settings screen will appear.

5. Select the Parental Controls checkbox and press OK to enable parental controls.
6. Select Edit next to Parental Controls. It will prompt you to save changes. Select Yes and press OK on the remote.
7. Click each category and use the arrows to scroll through options. Press OK to to save each setting.
 - Movie Rating
 - TV Rating
 - Unlock Timeout
 - Block Unrated
 - Show Blocked Program Info
 - Content Ratings
 - S** Sexual Situations
 - D** Suggestive Dialogue
 - V** Violence
 - L** Language
 - F** Fantasy Violence

When finished, select Submit and press OK to save and exit.

Setting Up Sub Accounts

The main user can create and maintain sub accounts from the Settings menu. User IDs, passwords, and parental control settings can be configured for each sub account.

- 1.** Press MENU on the remote control.
- 2.** Select Settings and press OK on the remote.
- 3.** Enter your password and press OK on the remote.
- 4.** The Settings screen will appear.
- 5.** Check the Require Login box to enable user accounts.
- 6.** Select the Users tab at the top of the screen and press OK on the remote. It will prompt you to save changes. Select Yes and press OK on the remote.
- 7.** Select ADD and press the OK button to add a new user.
- 8.** Select the login field and press OK to bring up the onscreen keyboard. Enter the new user name and click Done when finished.
- 9.** Enter the user's password in both the New Password and Confirm Password fields.
- 10.** Enter an allowance if the user is allowed to purchase pay-per-view items.
- 11.** Enter the PIN for the main account.
- 12.** Check the Enable Caller ID box if the new user should see Caller ID pop-up messages.

13. Select Continue and press the OK button.
14. Continue by setting the desired parental controls.
15. Select Submit and press OK on the remote when done. The new user account is created!
16. To use the new sub account, go to the Main Menu and select Sign Out.
17. At the sign-in screen, change the user by highlighting the user field and clicking OK. Use the up and down arrow keys to change users. Press OK when done.
18. Enter the user's password by highlighting the password field and typing in the password. Click Sign In when you are finished.

NOTE: Parental controls must be enabled on the main account for the feature to be active on sub accounts.

ACCESSING VAULT



The Vault stores purchased programming, a list of your scheduled reminders and auto-tune events, messages from TDS, and a Caller ID log.

To access stored information:

1. Press MENU on the remote.
2. Highlight Vault and click OK.
3. Highlight the category you wish to access and click OK.

Pay-Per-View (PPV)

PPV lists purchased movies and events available for purchase.

To rent a PPV movie/event

1. Press GUIDE on the remote.
2. Navigate to a PPV channel you want

to watch.

3. Press OK on the remote.
4. A box will appear that asks "What would you like to do". If you are within the allotted start window (the first 10 minutes) you can select Buy PPV. If you are late for the start of the show, you can select Buy Next PPV.
5. After you select Buy PPV, a pop-up screen with information (title, cost, start time) about the event will appear. You'll be asked to enter your PIN. You may also check a box to share the video on other set-top boxes on your account.
6. Press OK after you enter PIN. Or, select the on-screen button marked "Buy" and press OK (cancel is also an option).

When you order a PPV event in advance, the set-top box will either tune to the PPV channel automatically at the correct time, or a pop-up window will notify you of the PPV event. The notification depends on the reminder and auto-tune options you have set up. To adjust, visit the PPV events screen in the Vault menu.

Caller ID

Caller ID offers access to a log of all telephone calls you have received. You can review and

delete individual entries.

1. In Vault, highlight Caller ID and press OK on your remote. A list of your received calls appears.
2. To delete, highlight the Caller, press OK.

Setting Reminders

Set Up

1. Select a program in the Guide. Highlight the program listing and press OK.
2. Highlight Set Reminder and press OK. You will then be returned to the Guide.
3. The program listing will show an icon next to the program name.
4. *If you chose:*

Reminder—A few minutes before your program comes on, a box will appear on your screen, telling you that you have a reminder. Press INFO to display the reminder. Highlight the button showing the program name. Press OK to tune to that program or highlight Cancel and press OK to ignore the reminder.

Autotune—Just before the program begins a message will pop up, giving you the option

to tune in or cancel. You can choose either option or just wait. The pop-up will go away and the system will tune you to the correct channel.

Canceling a Reminder

1. Select the program to cancel by highlighting it. Then press OK.
2. Arrow up or down to Cancel Reminder. Then press OK and you'll be returned to the Guide.

Messages

Messages may inform you of promotional offers, upcoming pay per view events, and service upgrades. Whenever you receive a new message from TDS, an alert will appear on your screen informing you of the new message.

To read the message:

1. Press INFO on your remote to display the message.
2. Highlight and press OK. A list of all available messages appears.
3. To read the message, highlight and the full message will be displayed in the Info Area.

To ignore the alert:

1. Press Exit to ignore the alert and view the message.
2. Highlight Delete and press OK to remove the entry, or Cancel if you want to keep it.

Video Features (Not Currently Available to TDS TV customers.)

Video provides access to Video-On-Demand rentals that you've already purchased.

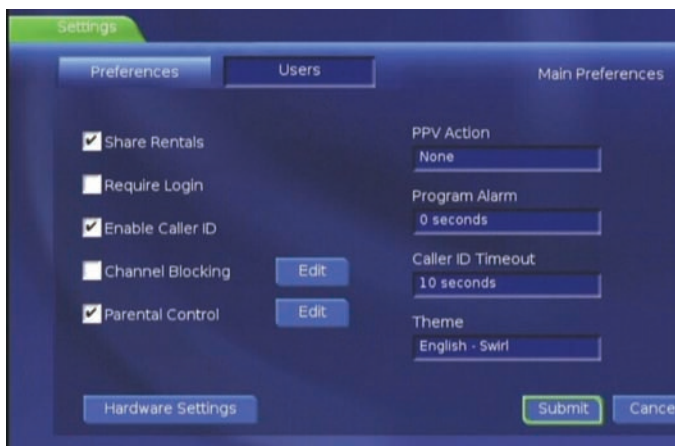
Pay-Per-Block (Not Currently Available to TDS TV customers.)

All-day PPV movies that you've purchased are located here.

Sports Packages (Not Currently Available to TDS TV customers.)

Any special sports packages you purchase are located here.

CHANGING SETTINGS



Control your TDS TV video service. Here you can change how alerts appear on your screen, create parental controls, and block channels.

The options on the Settings screen are:

Share Rentals

To share purchased PPV events/programs with sub users (other set-top boxes), check the box (use OK to check/uncheck)

Require Login

To turn login on/off, check the box.

Enable Caller ID

Enable or disable the Caller ID pop up.

Channel Blocking

To block channels, check box, then click EDIT. Use arrow keys to move to channel selection you want to block, click OK to block channel.

Continue this process until you have selected all channels that you want blocked. Click UPDATE. On Preferences tab, click SUBMIT to finalize changes.

PPV Action Field

Set a reminder when PPV is ready. Options are: none, reminder, and auto-tune.

Program Alarm

Allows you to set the reminder time.

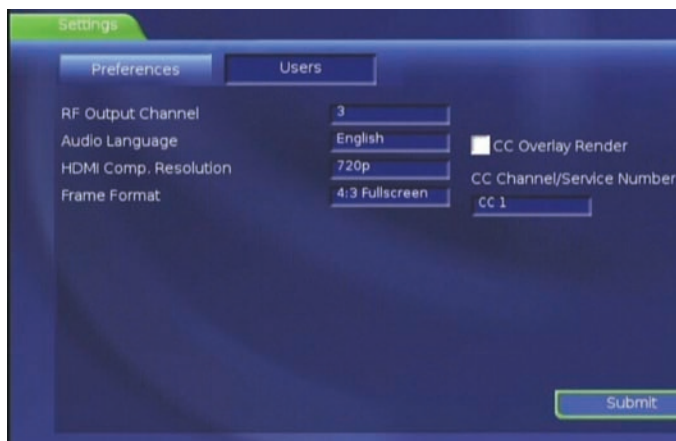
Caller ID Timeout Field

Use left/right arrows to select appropriate time for displaying the Caller ID alert box: 5—50 seconds (in 5 second intervals).

Theme

You are not allowed to change this setting.

Hardware Settings



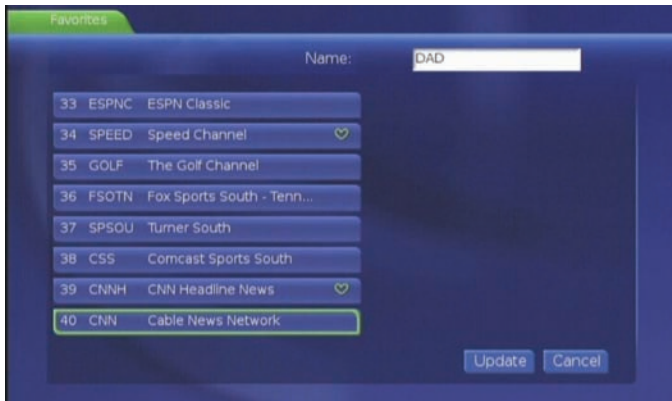
Optimize video output based on the video cable set up.

1. Press MENU on the remote.
2. Select Settings, enter your Password and press OK.
3. Select Hardware Settings and press OK.
 - **RF Output Channel**
Click on box and it lets you change the channel that you want your TV set to if using the coax connection.
 - **Audio Language**
 - **HDMI Comp. Resolution**
 - **Frame Format**—Set your TV format to enable the most optimal image for your display; select the appropriate option for your TV to preserve the complete image.
Options include:
 - 4:3** Crops the left and right sides of the image and displays a 4:3 image.
 - 4:3 Letter box** Shrinks the image vertically to preserve its aspect ratio on a 4:3 display and puts black bars at the top and bottom of the image.
 - 16:9** The image is not manipulated, so it displays in the original format.
 - **CC Overlay Render**—Close captioning on STB. Check this if you want the STB to automatically be set to show close

captioning on the screen.

- **CC Channel/Service Number**—Please leave as set up.

FAVORITES



Create, edit, and delete a list of your most frequently viewed and favorite channels. Use the default favorites lists (All or Subscribed) or create your own (up to 5 unique lists.)

Set Up Favorites Lists

1. Press MENU on the remote.
(The Main menu displays.)
2. Select Favorites, press OK.
3. Select Create, press OK.
4. In highlighted name box, click OK button to get keypad. You must press Clear All on keypad before you begin entering the name. When you have completed the

name click DONE.

5. Browse the list of channels to either select or deselect each channel.
6. Press OK on the remote to add the highlighted channel to your Favorites list. A "heart" symbol appears next the selected channel when it has been added to your Favorites list.
7. Select Update and press OK when you've completed.

NOTE: Pressing the GUIDE button will toggle through the names of your favorites lists. Next to the "heart" in the information bar, the name of the current favorites list is displayed. If a channel is selected by typing in the channel number directly, and it's not one of your favorites, the heart is displayed with a "---" to indicate that you are on a channel which is not part of the current favorites.

Edit Your Favorites

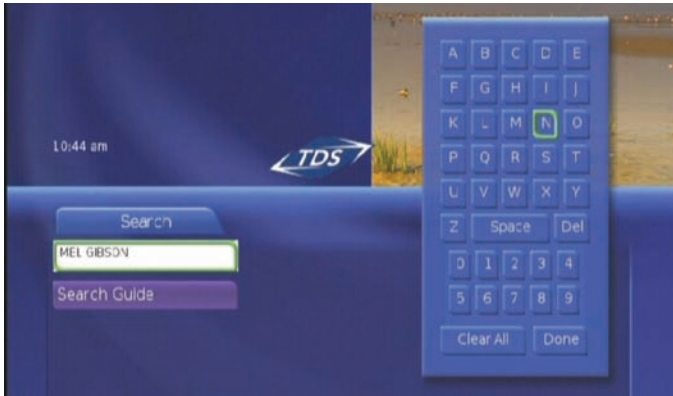
1. Press MENU on the remote.
2. Select Favorites, click OK, then Edit.
3. Choose the list to rename or edit, then click OK.

4. If you are changing the list name, you must click OK while highlighted box is in the name, then the on-screen keypad appears to rename the list. When you have completed renaming the list, click on DONE.
5. Browse the list of channels to either select or deselect each channel.
6. Select Update and click OK to complete the changes and exit.

Deleting Favorites

1. Press MENU on the remote.
(The Main menu displays.)
2. Select Favorites, click OK.
3. Choose Delete.
4. Select the list to delete and select Yes.
The Delete Favorites screen is updated and reflects the removed Favorite.

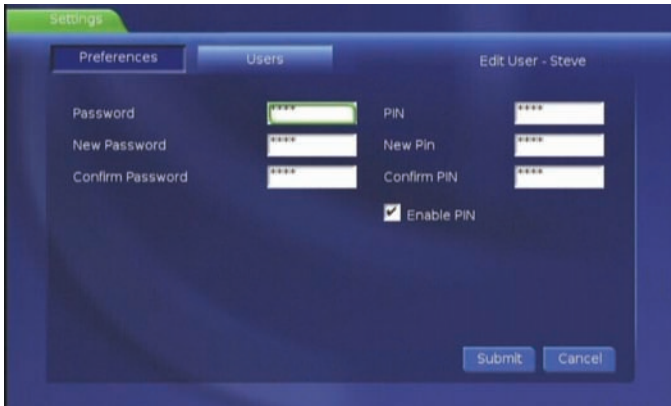
SEARCHING THE GUIDE



Search allows you to enter the name (or partial name) of a program you are looking for.

1. Press SEARCH and OK on the remote.
2. The Search screen will display, press OK on the remote and the on-screen keypad displays.
3. Use the arrow keys to navigate letters and numbers to spell search term/word, and select Done.
4. Click on SEARCH GUIDE, and select Extended (EPG) or Quick (QPG) to begin your search.
5. The Search feature queries both titles and descriptions of the keyword you are searching for.

SYSTEM PASSWORD & PIN



CHANGING SYSTEM PASSWORD

Create and modify your Password for System Settings.

1. Press MENU on the remote.
2. Select Settings, press OK, enter your Password and press OK.
3. Use right arrow key to go to users tab and press OK.
4. Default selection is Main Account on the User Tab.
5. Select Edit and press OK.
6. Enter your old password using the remote.
7. Enter your new password using the remote, and re-enter to confirm.

8. Enter your PIN.
9. Select Submit and press OK to complete the Password modification and return to the Menu. A confirmation message appears; after a few seconds, the system returns to the Menu.

CHANGING OR DISABLING THE PIN

Change or disable the PIN for purchases.

1. Press MENU on the remote.
2. Select Settings, press OK, enter your Password and press OK.
3. Use right arrow key to go to users tab and press OK.
4. Default selection is Main Account on the User Tab.
5. Select Edit and press OK.
6. Enter your old PIN, then your new PIN, and re-enter to confirm.
7. If you want the PIN enabled, make sure the Enable PIN box is checked. If you want the PIN disabled, make sure to deselect the Enable PIN box.
8. Select Submit and press OK to complete

the PIN modification and return to the Menu. A confirmation message will appear. After a few seconds, the system returns to the Menu.

TROUBLESHOOTING GUIDE

No Picture (e.g., snowy or black screen)

- Turn the TV off and back on.
- Verify the input is correct on your TV. If you are using coaxial cable, make sure your TV is tuned to channel 3.
- Verify all cables are securely connected to the back of the set-top box and the television.
- Check the power source to your TV and the set-top box.
- Unplug the power source to the set-top box for 30 seconds. Then, plug it back in and wait about 5 minutes for the set-top box to reboot. (Note: Allow 10–15 minutes for a DVR set-top box to reboot.)

Some Channels Appear to be Missing

- Make sure you are viewing ALL channels (not FAVORITES) by pressing the GUIDE button on the remote.
- Check settings for Parental Controls or Channel Blocking.
- Verify the channel is included in the programming package you have subscribed to by calling TDS at 1-866-44-TDSTV.

HD Channels Are Missing

- Refer to your TV Manual to ensure all cables are connected properly.

- Verify the HD channels are provisioned for your account by calling TDS at 1-866-44-TDSTV.

No Sound

- Verify that the volume is turned up.
- Verify that the TV is not on MUTE.
- Turn the TV off and turn back on.
- Verify that the audio cables are connected properly, and to the proper input on the TV.
- If your set-top box is connected through a device (e.g., surround sound, stereo, VCR) make sure the device is turned on and is set to the correct input.
- Unplug the power source to the set-top box for 30 seconds. Then, plug it back in and wait about 5 minutes for the set-top box to reboot.

Poor Sound Quality

- Verify that the audio cables are connected properly.
- If the problem is voice sync and your set-top box is connected via HDMI cables, unplug the power source to the set-top box. If the problem still persists, consider switching to component video and stereo audio cables instead of HDMI.

Remote Control Not Working

- Press the STB button on the remote to make sure the correct device has been selected.
- Check batteries to see if they need to be replaced.
- Verify that the set-top box, TV, and audio device

(e.g., surround sound, stereo, etc.) have power.

- If the problem is with control of a television or stereo (not the set-top box), try reprogramming the remote with the code list provided.
- Try using the remote on a different set-top box. If it works on a different TV, you should go back to the first set-top box and cycle the power by unplugging the power cable on the back of the set-top box. Wait 30 seconds and plug it back in.

DVR Events Have Disappeared

- The recordings that are oldest and not “protected” will be deleted if you run out of storage space.
- They may have inadvertently been deleted. Review Delete History to access a list of deleted recordings.

EMERGENCY ALERT SYSTEM (EAS)

Your set-top box may be interrupted for Emergency Alert System (EAS) updates when watching regular TV channels, PPV, or Guide mode. The system will automatically change to the EAS alert channel when an EAS event occurs. The DTV guide is disabled during an EAS event.

UNIVERSAL REMOTE CONTROL CODES

The Universal Remote Control that controls your TDS TV set-top box can be programmed to operate other devices such as your TV, DVD player, Home Theatre System, or VCR. Use the codes listed below to program your remote control to work with the additional devices.

TV/DVD COMBO CODES

Brand	TV	DVD
Apex	1163	2095
Broksonic	1114	2053
RCA	1115, 1162	2063, 2099
Sansui	1122	2071
Sylvania	1150	2092
Toshiba	1116	2054

TV/VCR COMBO CODES

Brand	TV	VCR
Broksonic	1121	3081
GE	1164	3090
Quasar	1165, 1166	3091, 3092
RCA	1167, 1168	3093, 3094
Samsung	1161	3089
Sylvania	1145	3095
Toshiba	1006	3096
Zenith	1118	3097

TV/DVD/VCR COMBO CODES

Brand	TV	DVD	VCR
Panasonic	1123, 1152	2075, 2076	3087, 3086
RCA	1151	2077	3106
Sharp	1153	2086	3100
Sylvania	1027, 1124	2064, 2078	3105, 3088
Toshiba	1154, 1158	2093, 2094	3099, 3098

DVD/VCR COMBO CODES

Brand	DVD	VCR
Broksonic	2072	3082
Daewoo	2062	3076
Emerson	2073	3083
Go Video	2046, 2127, 2129	3066, 3110, 3109
Hitachi	2126	3117
JVC	2047, 2097	3067, 3118
Panasonic	2066	3078
Philips	2051	3071
Polaroid	2007	3111
RCA	2048	3068
Samsung	2049, 2074, 2085	3069, 3084, 3101
Sanyo	2050	3070
Sony	2065, 2067	3104, 3085
Toshiba	2080, 2084	3103, 3102
Zenith	2052, 2128	3072, 3119

TV GROUP

Brand	TV
Abex	1098

Admiral	1001, 1099
Advent	1005, 1053, 1110, 1113
Adventura	1100
Aiko	1015
Aiwa	1034
Akai	1002
Alleron	1044
Amtron	1036
Anam National	1003, 1036
AOC	1004, 1005
Apex	1111, 1119, 1163
Audiovox	1036
Belcor	1004
Bell & Howell	1001, 1045
Benq	1042
Bradford	1036
Broksonic	1114, 1121
Brokwood	1004
Candle	1004, 1007, 1100
Celebrity	1002
Citizen	1004, 1007, 1015, 1036, 1073, 1097, 1100
Colortyme	1004
Concerto	1004, 1036
Craig	1036
Crosley	1000, 1053
Crown	1036, 1053
Curtis Mathes	1000, 1004, 1014, 1045, 1073, 1097
CXC	1036
Daewoo	1004, 1005, 1013, 1015, 1016, 1097, 1106
Daytron	1004, 1097

Dimensia	1000
Dumont	1160
Dynatech	1004
Electroband	1002
Electrohome	1002, 1003, 1004, 1018, 1021
Emerson	1004, 1011, 1013, 1025, 1028, 1031, 1033, 1036, 1044, 1045, 1080, 1097, 1101, 1102, 1107
Envision	1004
Fisher	1043, 1045, 1047, 1103
Fujitsu	1044, 1029
Funai	1036, 1044
Futuretec	1036
Gateway	1038
GE	1000, 1003, 1004, 1008, 1021, 1048, 1049, 1063, 1068, 1094, 1144, 1164
Gibraltar	1160
Goldstar	1004, 1005, 1011, 1018, 1050, 1090, 1091, 1097, 1098
Grunpy	1036, 1044
Hallmark	1004
Harvard	1036
Hisense	1112
Hitachi	1004, 1011, 1012, 1051, 1052, 1084, 1085, 1086, 1087, 1102
IMA	1036
Infinity	1053
Janeil	1100
JBL	1053
JCB	1002

JC Penney	1000, 1004, 1005, 1007, 1012, 1021, 1048, 1049, 1058, 1063, 1068, 1072, 1073, 1075, 1097, 1098
Jensen	1004
JVC	1011, 1012, 1026, 1049, 1052, 1054, 1055, 1080, 1092, 1117, 1131
Kawasho	1002, 1004
Kenwood	1004, 1018
Kloss Novabeam	1036, 1056, 1057, 1100
KTV	1036, 1097, 1101
LG	1005
Loewe	1053
Logik	1001
Luxman	1004
LXI	1000, 1004, 1045, 1053, 1058, 1068, 1075
Magnavox	1004, 1007, 1018, 1053, 1056, 1057, 1059, 1060, 1083, 1110, 1147
Majestic	1001
Marantz	1004, 1051, 1053
Megatron	1004, 1051
Memorex	1001, 1004, 1005, 1022, 1045
MGA	1004, 1005, 1018, 1021, 1047, 1061, 1062
Midland	1049, 1068, 1097, 1098, 1160
Minutz	1048
Mitsubishi	1004, 1005, 1018, 1021, 1047, 1061, 1062, 1081
Montgomery Ward	1001
Motorola	1003, 1099
MTC	1004, 1005, 1073

Multitech	1036
NAD	1004, 1058, 1075, 1085
NEC	1003, 1004, 1005
Net-Tv	1040
Nikko	1004, 1015
NTC	1015
Onwa	1036
Optimus	1085
Optonica	1064, 1099
Orion	1023, 1033, 1107
Panasonic	1003, 1010, 1049, 1053, 1096, 1123, 1152
Philco	1003, 1004, 1005, 1007, 1011, 1018, 1053, 1056, 1057, 1059
Phillips	1003, 1004, 1007, 1011, 1017, 1018, 1053, 1056, 1057, 1059, 1060, 1063, 1110, 1126, 1129, 1148, 1155
Pilot	1097
Pioneer	1004, 1085, 1102
Portland	1004, 1005, 1015, 1097
Price Club	1073
Prima	1113
Prism	1049
Proscan	1000, 1008, 1068, 1108
Proton	1004, 1011
Pulsar	1160
Pulser	1004
Quasar	1003, 1039, 1049, 1096, 1165, 1166
Radio Shack	1000, 1045, 1098
Radio Shack/ Realistic	1004, 1011, 1036, 1045, 1064, 1097, 1098
RCA	1000, 1003, 1004, 1005, 1008, 1018, 1049,

	1065, 1066, 1067, 1068, 1069, 1070, 1071, 1082, 1102, 1104, 1106, 1108, 1115, 1151, 1162, 1167, 1168
Runco	1160
Sampo	1004, 1097, 1098, 1120
Samsung	1004, 1005, 1011, 1014, 1018, 1019, 1072, 1073, 1074, 1097, 1098, 1156, 1161
Sansui	1023, 1107, 1122
Sanyo	1045, 1062, 1095, 1103
Scotch	1004
Scott	1004, 1011, 1033, 1036, 1044
Sears	1000, 1004, 1012, 1018, 1044, 1045, 1047, 1055, 1058, 1068, 1075, 1076, 1103, 1105
Sharp	1004, 1009, 1011, 1025, 1064, 1077, 1078, 1097, 1099, 1153, 1157
Shogun	1004
Signature	1001
Simpson	1007
Sony	1002, 1109, 1137
Soundesign	1004, 1007, 1036, 1044
Squareview	1105
SSS	1036
Starlite	1036
Supre-Macy	1100
Supreme	1002
Sylvania	1004, 1007, 1018, 1027, 1053, 1056, 1057, 1059, 1060, 1124, 1145, 1150
Symphonic	1024, 1031, 1036, 1105
Tandy	1099
Tashiko	1058

Tatung	1003
Technics	1049
Techwood	1004, 1049
Teknika	1001, 1004, 1005, 1007, 1011, 1012, 1015, 1036, 1044, 1060, 1073, 1096, 1097
Tera	1004, 1011
TMK	1004
Toshiba	1006, 1045, 1058, 1073, 1075, 1079, 1093, 1116, 1154, 1158, 1159
Totevision	1097
Universal	1048, 1063
Victor	1055
Vidtech	1004, 1005
Viking	1100
Wards	1000, 1001, 1004, 1005, 1018, 1031, 1044, 1048, 1053, 1056, 1057, 1059, 1060, 1063, 1064
White Westinghouse	1013
Yamaha	1004, 1005, 1018
Zenith	1001, 1089, 1118, 1125, 1161

HDTV CODES

Apex-1088
Daewoo-1135
Dell-1141, 1142, 1146
Mitsubishi-1032
Philips-1126, 1129
Proscan-1000
RCA-1143
Sampo-1038
Samsung-1019
Sony-1037, 1128, 1137
Zenith-1020, 1139

LCD TV CODES

Benq-1136
NET-TV-1040
Sharp-1138
Sylvania-1046

PLASMA TV CODES

Acer-1041
Fujitsu-1029
Gateway-1038
Pioneer-1035
Viewsonic-1038, 1149

PROJECTION TV CODES

Hitachi-1030, 1132, 1133,
1134
JVC-1130, 1131
Panasonic-1140
Toshiba-1127

DVD GROUP

DVD

Aiwa-2026, 2131
Apex-2001, 2056, 2057,
2061, 2095, 2098
Audiovox-2132
Blaupunkt-2136
BOSE-2122, 2130
Broksonic-2053, 2072
Clarion-2100
Classic-2101
Cyberhome-2083

Portable DVD

Daewoo-2058, 2062, 2137,
2138
Denon-2110, 2133, 2040
Emerson-2002, 2059, 2073
Fisher-2112, 2134
Funai-2002
GE-2079, 2118, 2041
Go Video-2046, 2127, 2129,
2124

Network DVD

GPX-2114
Harmon Kardon-2125
Hitachi-2000, 2027, 2126
Irradio-2149
JVC-2017, 2028, 2047, 2090,
2096, 2097, 2115
Kenwood-2142, 2148
Konka-2029, 2030
Koss-2060
Lasonic-2081
Magnavox-2002, 2018,
2033, 2089
Marantz-2143
Memorex-2003
Mintek-2004
Mitsubishi-2019, 2123, 2145,
2147
NAD-2059, 2139
Nakamichi-2116
Nexxtech-2140
Norcent-2005, 2117
Onkyo-2006
Orifron-2009
Panasonic-2031, 2066,
2075, 2076, 2104, 2105,
2106, 2111
Phillips-2018, 2032, 2033,
2045, 2051, 2091, 2109
Pioneer-2008, 2021

Polaroid-2007
Proscan-2010, 2118, 2144
Qwestar-2009
RCA-2010, 2048, 2063,
2077, 2099, 2107, 2118
RCA-2055

Portable DVD

Sampo-2119
Samsung-2012, 2049, 2074,
2085, 2102
Sansui-2071
Sanyo-2034, 2050, 2120
Sharp-2013, 2015, 2044,
2086, 2082
Sherwood-2121
Sony-2014, 2020, 2022,
2065, 2067, 2068, 2069,
2070, 2087, 2103, 2108,
2113
Sylvania-2002, 2064, 2078,
2092
Techwood-2141
Toshiba-2023, 2025, 2037,
2038, 2040, 2041, 2054,
2080, 2084, 2088, 2093,
2094
Toshiba-2135
Venturer-2011
Yamaha-2106, 2146
Zenith-2039, 2052, 2128

AUX GROUP

Amplifier Codes

Aiwa-6003, 6020

Carver-6002

Citizen-6026

Denon-6014

Fisher-6002

GE-6028

Goldstar-6016, 6021

Harman Kardon-6013

Hitachi-6034

JVC-6018, 6024

Kenwood-6015, 6022

Maganvox-6035

Marantz-6000

Nakamichi-6012

NEC-6033

Onkyo-6005, 6006, 6017

Optimus-6008

Panasonic-6001

Pioneer-6004, 6009, 6010,

6023, 6036

Proton-6035

Quasar-6001

RCA-6025

Sharp-6029, 6030, 6031,

6032

Sherwood-6011

Sony-6020

Teac-6019

Technic-6001

Technics-6001

Toshiba-6027

Victor-6024

Yamaha-6007

HOME THEATER IN A BOX (HTIB)

Brand	Audio	DVD
Bose	4000	2130
JBL	4001	2043
JVC	4002	2035
Koss	4003	2060
Onkyo	4004	2024
Panasonic	4005	2104
Philips	4006	2036
Pioneer	4007	2016

RCA	4008	2042
Sony	4009, 4010	2113, 2108
Venturer	4011	2011

RECEIVER/TUNER CODES

Aiwa-5000, 5001, 5002,
 5004, 5005, 5006
 Bose-5007
 Carver-5000
 Denon-5008
 Harman Kardon-5000, 5009
 JBL-5009
 JVC-5010
 Kenwood-5011, 5012, 5013
 Linn-5000
 Maganvox-5000
 Marantz-5000
 Onkyo-5018
 Panasonic-5019, 5020
 Philips-5000
 Pioneer-5021, 5022
 RCA-5024, 5025, 5026
 Sansui-5000
 Sherwood-5027
 Sony-5017, 5023, 5028,
 5029, 5030, 5031, 5032,
 5033
 Technics-5016, 5019, 5020

Wards-5000, 5021
 Yamaha-5003, 5014, 5015,
 5021

VCR CODES

Admiral-3001
 Adventura-3021
 Aiwa-3021
 Akai-3003, 3055, 3058
 Audio Dynamics-3005, 3006
 Bell & Howell-3007
 Broksonic-3081, 3082
 Candle-3011, 3013, 3014
 Canon-3016
 Carver-3036
 Citizen-3011, 3013, 3014
 Colortyme-3005
 Curtis Mathes-3000, 3005,
 3014
 Daewoo-3011, 3013, 3021,
 3076
 DBX-3005, 3006
 Dimensia-3000
 Dynatech-3021
 Electrohome-3023

Emerson-3003, 3011, 3021, 3023, 3038, 3083	MGA-3023, 3038 Minolta-3052
Fisher-3007, 3029, 3030 Fuji-3058	Mitsubishi-3023, 3038, 3039, 3060, 3108
Funai-3002, 3021 Garrard-3021	Montgomery Ward-3001 Motorola-3001
GE-3000, 3059, 3090 Go Video-3066, 3073, 3109, 3110	Multitech-3021 NEC-3005, 3006, 3007, 3014, 3055, 3060
Goldstar-3005, 3014 Gradiente-3021	Optimus-3001 Optonica-3047
Harley Davidson-3021 Harman Kardon-3005	Orion-3004 Panasonic-3053, 3062, 3063, 3077, 3078, 3079, 3086, 3087, 3107
Headquarter-3007 Hitachi-3052, 3055, 3059, 3117	Pentax-3052, 3059 Pentex Research-3014
JC Penney-3005, 3006, 3007, 3030, 3036, 3052 Jensen-3055	Philco-3036, 3037 Phillips-3036, 3047, 3061, 3071
JVC-3005, 3006, 3007, 3014, 3055, 3060, 3067, 3118 Kenwood-3005, 3006, 3007, 3014, 3055, 3060	Pioneer-3006, 3060 Polaroid-3111 Portland-3013
Lloyd's-3021 Magnavox-3036, 3037, 3051, 3061	Proscan-3000 Pulsar-3051 Quarter-3007
Marantz-3005, 3006, 3007, 3014, 3036 Memorex-3001, 3004, 3007, 3021, 3051	Quartz-3007 Quasar-3062, 3091, 3092 Radio Shack-3001, 3047 Radio Shack/Realistic-3007,

3021, 3023, 3029, 3047
RCA-3000, 3003, 3040,
3041, 3042, 3052, 3059,
3062, 3068, 3075, 3093,
3094, 3106
Realistic-3001, 3007, 3011,
3021, 3023, 3029, 3047
Ricoh-3064
Runco-3051
Samsung-3011, 3069, 3084,
3089, 3101
Sanky-3001, 3051
Sansui-3004, 3006, 3055,
3060
Sanyo-3007, 3070
Scott-3011, 3038
Sears-3007, 3029, 3030,
3052,
Sharp-3001, 3013, 3023,
3047, 3080, 3100
Shintom-3048, 3058
Signature-3001
Singer-3064
Sony-3048, 3049, 3058,
3085, 3104
STS-3052
Sylvania-3021, 3036, 3037,
3038, 3061, 3088, 3095,
3105
Symphonic-3002, 3021
Tandy-3007
Tatung-3055
Teac-3021, 3042, 3055
Technics-3053
Teknika-3021, 3050
Tivo-3074
Toshiba-3011, 3029, 3030,
3038, 3096, 3098, 3099,
3102, 3103
Vector Research-3005, 3006,
3011
Victor-3006
Video Concepts-3005, 3006,
3011
Wards-3001, 3011, 3021,
3023, 3047, 3052
White Westinghouse-3002
XR-1000-3021
Yamaha-3005, 3006, 3007,
3014, 3055
Zenith-3048, 3051, 3058,
3064, 3072, 3097, 3119



Broadband. Digital TV. Phone.

615-773-9033

www.tdstv.com

Free Manuals Download Website

<http://myh66.com>

<http://usermanuals.us>

<http://www.somanuals.com>

<http://www.4manuals.cc>

<http://www.manual-lib.com>

<http://www.404manual.com>

<http://www.luxmanual.com>

<http://aubethermostatmanual.com>

Golf course search by state

<http://golfingnear.com>

Email search by domain

<http://emailbydomain.com>

Auto manuals search

<http://auto.somanuals.com>

TV manuals search

<http://tv.somanuals.com>