

400-3100-01
Rev 2.22
September 2006

MinIT 5250E

Users Guide



Ethernet to the iSeries

Ringdale, Inc.
101 Halmar Cove
Georgetown, Texas 78628
Tel: 888-288-9080
www.nlynx.com
www.ringdale.com



Technical Support

Important Notes:

The Power Button on the top of the unit will be lit (white) when there is power to the unit. The unit will not start until you press the button. Then it will turn green and the unit will boot.

The correct way to power down the unit is from the Start button or the MinIT Start Menu. Select Power Down from the menu. It will take a few moments to shut itself down and the light will turn white again.

If you forget to power the unit down correctly, you may lose any macros that you have recorded since the last proper shutdown.

There is extensive on-line help within the MinIT 5250E application.

If you are still in need of assistance, the following resources are available:

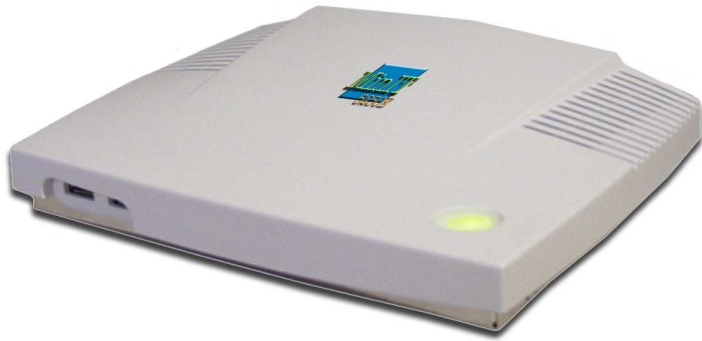
On the web: www.nlynx.com

Telephone Support USA: 888-288-9080 or 512-288-9080

TABLE OF CONTENTS

Packing List	2
Connecting the Unit	3
Getting Around the Desktop	4
The MinIT Start Menu	6
Configuration	7
Unit Information	8
Network Settings	9
Keyboard	10
5250 Sessions	11
Display Sessions	11
Printer Sessions	12
Printer Settings	13
Operation	14
122-key Twinax Style Keyboard	14
PC Style Keyboard	15
Macro Recording and Playback	16
Text Terminal Mode	17
Technical Support	20

MinIT 5250E packing list



MinIT 5250E Unit



Mouse



Power Pack

1. In the MinIT Administrator go to 5250 Sessions then go into each display session and click the check box that sets the session to Text mode.
2. Go into Unit Information and click the box for Boot into Terminal mode only.
3. Click Done and reboot the MinIT.

At this point, the unit will boot straight into Session 1 in Text mode. No Window Manager will be running and there will be no means for the user to modify settings. The user can toggle between the (up to) five Display Sessions by using Alt-F1 thru Alt-F5.

There are a few reasons, mostly to do with networking, which may cause Session 1 to not start or fail to connect. After correcting the problem, you do not have to reboot the MinIT. If you press Alt-F12 you will see a User Menu of options including 'r1' which restarts Session 1. This can save you the time and trouble of a reboot.

More about this User Menu -- there are two 'secret' commands we chose not to expose to users:

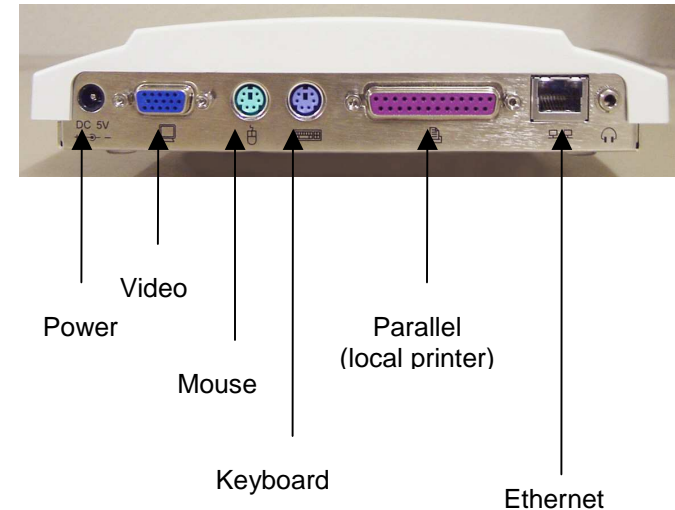
- ♦ 'nr' restarts networking. This may be all that is required if your Ethernet cable was loose.
- ♦ 'sq' shows you the contents of the printer Spool Queues.

This menu also allows you to start a window manager session if you wish to modify your settings. If you had earlier set an Administrative Password, attempting to start the window manager would prompt you for that password.

AND, this menu gives you a power down command. If you are running the Minit 5250E in Text ONLY Mode, we recommend you use this instead of the power button. This orderly shut down saves any new macros that you've recorded onto the built-in compact flash.

One more troubleshooting hint: Even though in terminal mode your MinIT does not display the window manager, it is running in the background, you just can't get to it from this unit without the password. You can, however, get to it from a PC running the MinitMan manager. Select the Unit and click Desktop and your Windows desktop computer will show you the MinIT5250 desktop. From there, you can use all of the Administrative configuration functions. See the MinitMan Manager CD for more information.

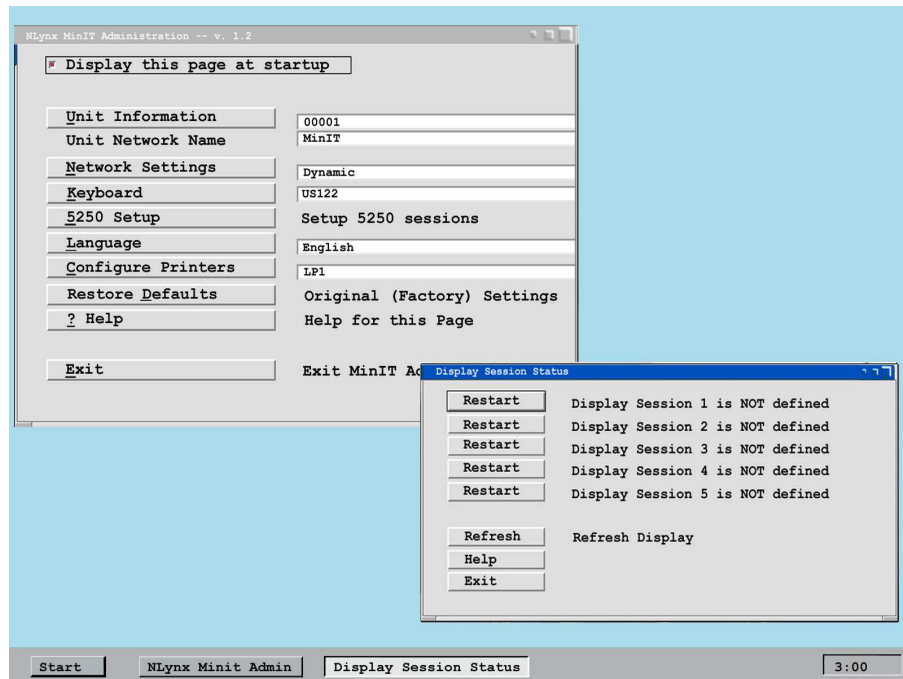
Connecting the Unit



MinIT Notes:

1. Use only the power supply provided with the unit. The use of any other power supply may damage the unit.
2. The Power Button on the top of the unit will be lit (white) when there is power to the unit. The unit will not start until you press the button. Then it will turn green.
3. **The correct way to power down the unit is from the Start button or the MinIT Root Menu.** See the Technical Support section of the manual for more information.
4. The USB ports on the front of the unit support USB Keyboard or Mouse.
5. The headphone jack can be used for powered speakers or amplified headphones.

Getting Around the Desktop



There are two ways to move around the Desktop – using the keyboard or using the mouse.

Using the Mouse



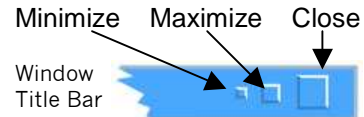
Left Click once on an object (field, button or window) to select the item.

Click on Start Button or Left Click in the desktop area to bring up the MiniIT Root Menu (Help, Configuration, Display Sessions, Printing, Calculator, Power Down, etc.)

The dark blue title bar will identify the active window across the top. Inactive windows will have a gray title bar across the top.

Windows can be moved (drag by the Title Bar) or resized (grab a corner and drag).

The buttons on the right side of the Title Bar control the window



Text Terminal Mode

One of the choices in the Setup 5250 Sessions Menu is the option to force the Minit 5250E into what we call the “Text Terminal ONLY Mode”.

The Text Terminal ONLY Mode makes the Minit 5250E operate very much like a twinax terminal. There can still be multiple sessions configured, but the user does not see the windows-style desktop. All they would see is a full screen 5250 terminal session.

If there are multiple sessions configured and running, you can get to each one by using Alt+F1, Alt+F2, Alt+F3, Alt+F4 and Alt+F5 to jump to each of the 5 display sessions.

Alt+F12 will take you to a small menu, with extremely limited options. If you have configured the Minit 5250e to run in Text Terminal ONLY mode, then this is the path you need to take to get into the Window Manager and the Administrative Menu, should you need to reconfigure the unit for some reason. This option is password protected to prevent curious workers from accidentally reconfiguring the unit. For more on the Administrative password, see the Unit Information section of the manual.

Note: In Text Terminal Mode there are a few shortcut keys that you may need to use:

Alt+r = Record Macro (start and stop)

Alt+p = Play Macro

Alt+c = the Cent sign

Alt+e = the Euro symbol

From a “Text Mode Only” session, the proper way to shut down the Minit 5250E is to hit Alt+F12 to take you into the menu, then hit p and Enter. This does an “orderly” shutdown, and saves any new macros that may have been recorded since the last time the unit was shut down.

Configuring the Minit 5250E for Text Terminal ONLY Mode

In order to get your MiniIT working as a terminal you must first configure your network settings and your Display and Printer Sessions. All of this is covered in the Configuration section.

We recommend that you leave your MiniIT configured as a Graphical Terminal until all of your sessions are working the way you want. Then you can convert it to a Text only terminal with following three steps:

Macro Recording and Playback

You can assign keyboard Macros to function keys F1 – F24.

Note: the **Record** and **Play** keys on the lower left of the 122-key twinax style keyboard are functional in the window mode. If you are in a Text mode session, however, use **Alt+r** and **Alt+p** for Record and Play.

Hit the Record key (or Alt+r), then the selected Function key (F1-F24), and then start entering the keystrokes that you'd like to record. When finished, hit the Record key (Alt+r) again to stop recording.

To play a macro, hit the Play key (or Alt+p), then the function key (F1-F24).

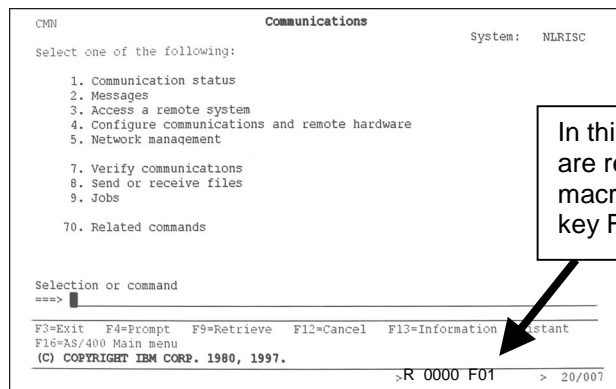
On a PC (104 key) keyboard, use the Alt+r and Alt+p short cuts to assign Macros to the function keys F1-F12.

F(x) refers to the function keys F1-F12

Alt+R+F(x) = Record Macro F(x)

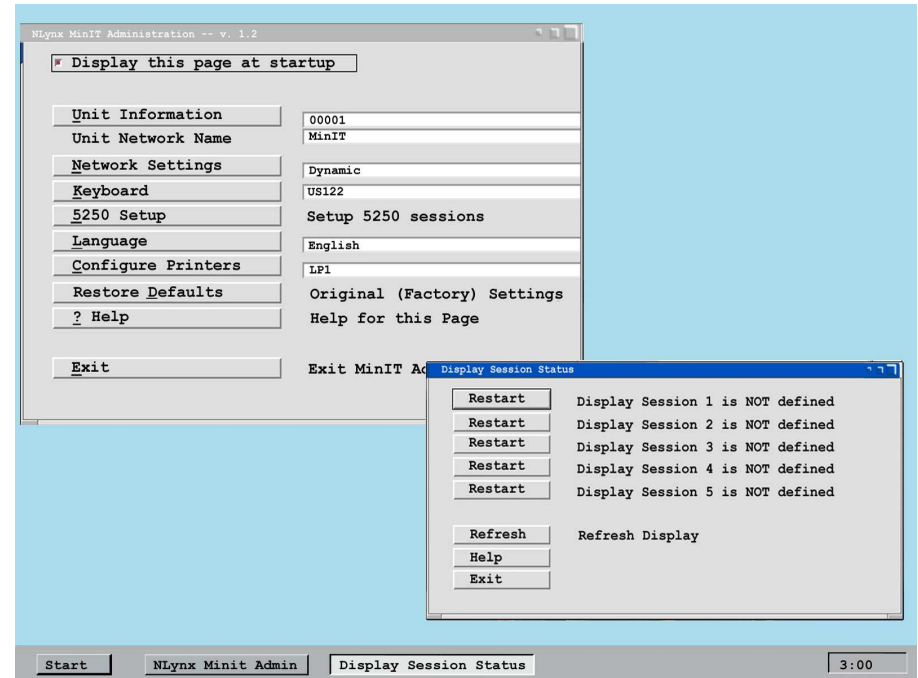
Alt+R = Stop recording

Alt+P+F(x) = Play Macro F(x)



In this example, we are recording a macro to Function key F1.

While you are in record mode an R will appear on the bottom of the screen, along with a counter and the Function key that the Macro is being recorded to.



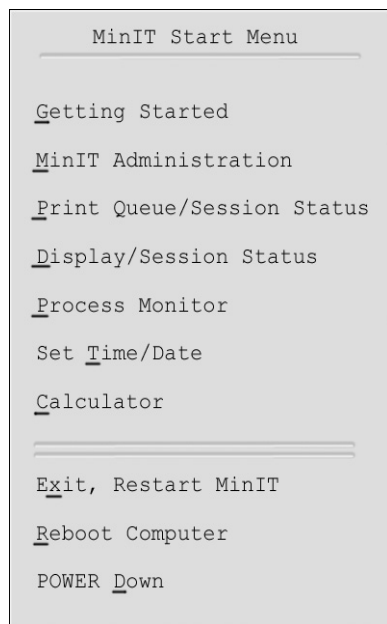
Using the Keyboard

Function	Keystroke(s)
To get to a particular window	Alt + Tab (hold down the Alt key and hit the tab key until the window you want is highlighted, then release).
To move between fields	Tab
Minit Root Menu	Alt + Shift +F1

If there is an underlined letter on a button, it is a keyboard shortcut to that button. For example, Hit D to go to Done



The MinIT Start Menu



You can call up the MinIT Start Menu by Clicking on the Start Button, by clicking on the Desktop, or by using Alt+Shift+F1.

Hint: If a letter in the Start Menu is underlined, it is a keyboard shortcut to that item. For instance, hit P to jump to Print Queue. (Hit P again to jump to Process Monitor).

The MinIT Start Menu is the key to most of the functions of the MinIT 5250E. Click on the desired menu item or use the underlined keyboard shortcut.

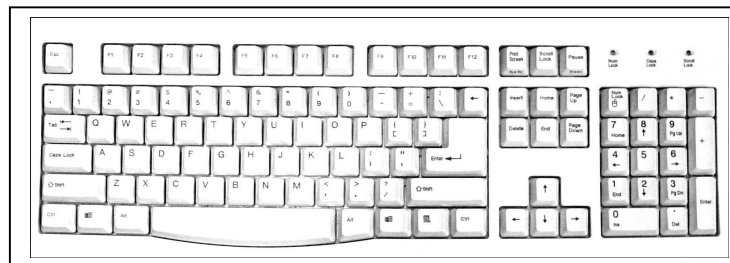
Menu Item	Function
Getting Started	Help overview
MinIT Administration	Configuration of the unit
Print Queue	Shows status of Printer Sessions and any print jobs outstanding. Cancel print jobs here.
Display Session Status	Shows status of all defined Display Sessions.
Process Monitor	For diagnostic use. Displays all active processes running on the MinIT.
Set Time/Date	Sets the Clock (lower right corner of Desktop)
Calculator	Brings up a calculator
Exit	Restarts the MinIT software (partial restart)
Reboot	Full Reboot of the unit
POWER Down	Always use this method to turn off the unit.

PC Style Keyboards

There are a number of special 5250 keys that are not present on a standard 104-key PC Style Keyboard. If you are using a PC style keyboard you can still use these functions by hitting the following shortcut key combinations:

F1 through F12 = F1 through F12
 F13 through F24 = Shift + F1 through F12
 Enter = Right Control (RCtrl)
 Field Exit = Enter
 Error Reset = Left Control (LCtrl)
 Attn = Esc
 Sys Req = Shift+Esc
 End = End
 Home = Home
 Dup = Numpad *
 Field - = Numpad -
 Field + = Numpad +
 Roll Up = Page Down
 Roll Down = Page Up
 Record = Alt+r
 Play = Alt+p
 ¢ = Alt+c
 Euro symbol = Alt+e
 Help = Alt+h
 Zoom in (bigger font) = Shift+Numpad+
 Zoom out (smaller font) = Shift+Numpad-

Again, if you wish to remap the keyboard to better suit your particular needs, the keyboard mapping utility is to be found under Keyboard within the MinIT Administration Menu.



Operation

```
OS/2 Communications System: NLRISC
Select one of the following:
1. Communication status
2. Messages
3. Access a remote system
4. Configure communications and remote hardware
5. Network management
7. Verify communications
8. Send or receive files
9. Jobs
70. Related commands

Selection or command
====
F3=Exit F4=Prompt F9=Retrieve F12=Cancel F13=Information Assistant
F10=2nd/3rd main menu
(C) COPYRIGHT IBM CORP. 1980, 1997. > 20/007
```

Using the 122-Key Twinax Style Keyboard



The 122-key Twinax Style Keyboard includes many special keys for use in AS/400 applications, such as Function keys 1-24, Help, Roll up, Attn, Sys Req, Field Plus, Record and Play, etc. For the most part the 5250 functions are indicated on the key cap in blue.

Attn = Esc

Sys Req = Shift+Esc

Screen Print = **Print Screen** key (above the Print key)

Erase Input = **Clear**

Dup = Shift+Insert

There are also a couple of keyboard shortcuts that might come in handy.

Zoom in (bigger font) = Shift+Numpad+

Zoom out (smaller font) = Shift+Numpad-

Euro Symbol = Alt+e

If you are running a session in Text Terminal Mode (see Setup 5250 Sessions), there are three more keyboard shortcuts that you may need to use:

Alt+R for Record Macro (start and stop)

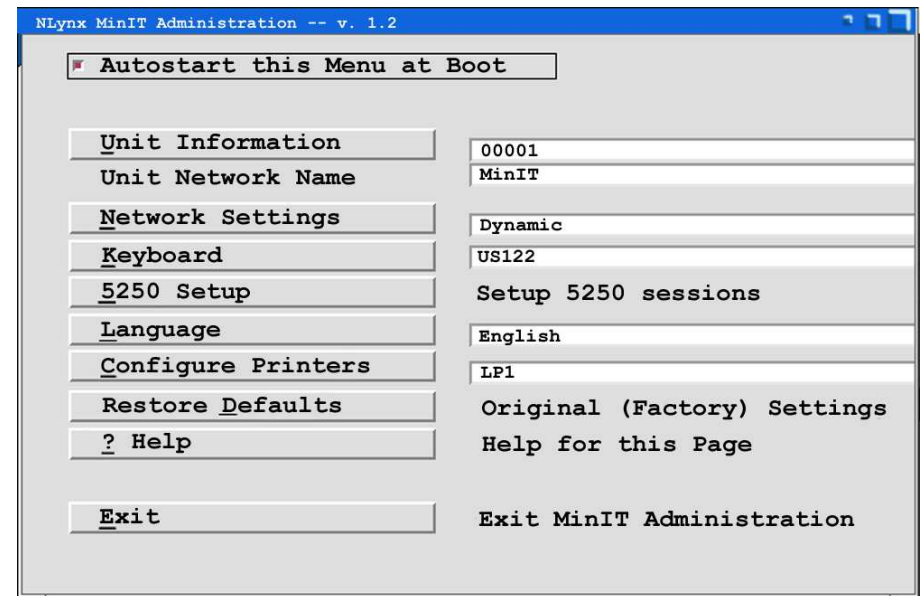
Alt+P for Play Macro

Alt+c to get the cent sign (¢).

Should you wish to customize your keyboard mapping, you can use the mapping utility that is built in to the Minit 5250E. See Keyboard Settings for more information.

Configuration

The Configuration Menu will come up the first time you power up the unit (If you don't want it to continue coming up, Click on the Autostart radio button).



Using the mouse to configure the unit is probably the easiest way, but you can accomplish all the same things using the keyboard if you prefer (tab through the fields, use the cursor keys and use the underlined keyboard shortcuts).

Essentially, you will want to go through these configuration items in order. Each button takes you to a configuration screen that prompts you for the information required. Each menu has built-in help that will assist you in filling in the appropriate information.

Unit Information

Unit Information

Unit No. 00021

Unit Description

NLYnx Management Server

Admin Password

Verify Password

MinitMan Port 18901

◆ Boot to Terminal Mode ONLY -- see Help

Restart MinitMan

Software Update Retrieve Software Update

Done Return to prev menu

Cancel Exit - Abandon Changes

? Help Help for this page

- ◆ The Unit Number is reported to the MinIT Management Software, to identify this unit on the network. **It needs to be a unique number for the MinitMan Manager to be able to see and manage the unit.** The default value is the last 6 digits of the Mac address.
- ◆ Unit Description should be used to help identify the unit, such as the name of the user, or a location.
- ◆ NLYnx Management Server is the IP address of the Server from which to download software updates to this unit.
- ◆ If you wish to secure this unit from accidental reconfiguration, you can set an Administrative Password here.
- ◆ Minit.Man port: this is the IP port that the MinitMan Management software uses to talk to the unit. The default is 18901. Change this only if you are changing it on the Minit.Man management station as well.
- ◆ Boot to Terminal Mode ONLY. Select this option if you want this unit to be forced into a straight text 5250 terminal mode, without access to the windows looking desktop. The access to the x-window desktop and the Administration menus will be hidden to the user. An administrator who knows the password can access any of the desktop or administrative functions.
- ◆ Restart MinitMan. You will want to hit Restart if you have changed any of the parameters of the unit, so that the new information is reported to the MinitMan manager.

Click on Done when you have completed this page.

Configure Printer

Configure Printer

Choose the Default Printer

◆ LP1

◆ LP2

◆ LP3

Configure LP1

Configure LP2

Configure LP3

Done Return to prev menu

Cancel Exit - Abandon Changes

? Help Help for this page

You can have up to 3 printers defined to be used as 5250 host printers. For instance, LP1 can be set up to use a parallel printer, and LP2 and LP3 can be network printers that are on your network.

- Choose your default Printer – usually LP1 – Then click on Configure LP1 in order to set the printer up.

Line Printer 1 Configuration

◆ Network

◆ Parallel Port

IP Address

Printer Name (Opt.)

Done Return to prev menu

Cancel Exit - Abandon Changes

? Help Help for this page

For a printer that is locally attached to this MinIT unit (Parallel Port), select Parallel Port and give the printer a name (optional, but it may help to have a name that is more meaningful to you than LP1).

If the printer is a network printer, fill in the IP address and give it a name.

Configuring 5250 Printer Sessions

Define Printer Session

Name of Session

◆ Autostart at Boot

IP Address of Host

Port at Host

◆ Host Print Transform

iSeries Printer

Bind this Session to a Logical Printer

◆ Default

◆ LP1

◆ LP2

◆ LP3

Return to Previous Menu

Exit - Abandon Changes

Help for this Screen

Once you have configured your 5250 Display Sessions, it is time to define up to three host printer sessions. This can be handy if you use different printers for various pre-printed forms.

Enter the name of the printer session (this will be the name that the AS/400 uses for this printer session. You will also enter the IP address of the AS/400.

Select Host Print Transform (recommended) to allow the AS/400 to format your print jobs. If you use Host print transform, you will need to enter the type of printer in the iSeries Printer box.

*NOTE: you must enter the printer type exactly as the AS/400 lists it. For example, enter *IBM2380 for an IBM 2380 Personal Printer Series II or enter *HP4 for an HP Laserjet 4 or compatible. See the Help for this screen to scroll through a listing of AS/400 supported printers.*

HINT: you can “Cut and Paste” from this list to avoid mistakes.

Next, you will select which “logical” printer to assign to this printer session. If you only have access to one printer from here, leave this at Default.

Select Done to save your entries.

Network Settings

Network Settings

Unit Network Name

◆ Dynamic (DHCP) IP Address

◆ Static (Manual) IP Address

IP Address

Netmask

Gateway

DNS Server

DNS Server

Restart Services (recommended)

Return to prev menu

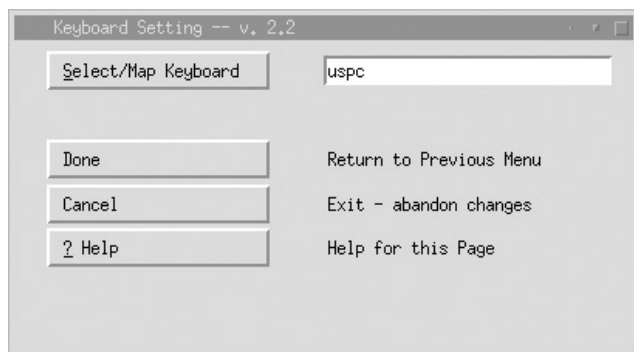
Exit - Abandon Changes

Help for this page

- The Unit Network Name must be unique in order for DNS servers to be able to identify this unit on the network.
- Choose Dynamic IP Address to use DHCP to automatically set the unit's network address, netmask, etc. (recommended).
- Choose Static IP Address if you wish to fill in your own network parameters. If you do so, fill in the appropriate information under IP Address, Netmask, Gateway and DNS Server.

If you made any changes to this page, we recommend that you hit the Network Restart button, in order to make the changes take effect now.

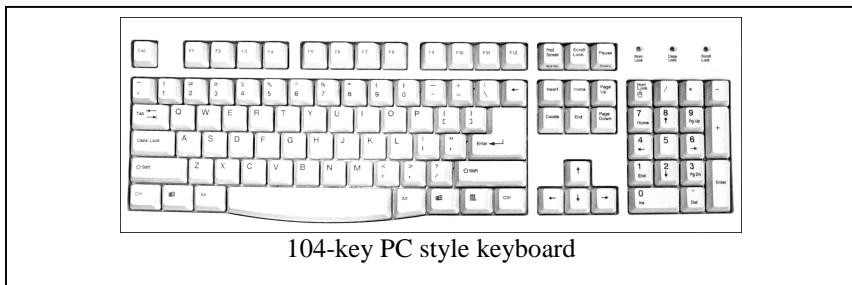
Keyboard Settings



Hit the Select button to choose and / or remap either the

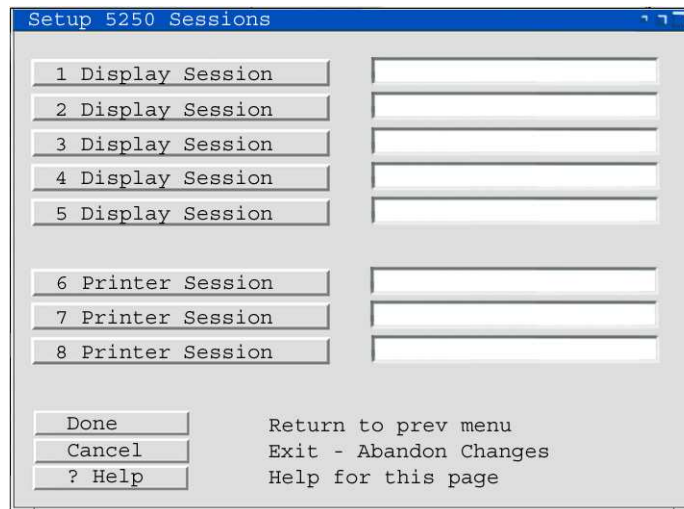
- 122-key Twinax Style keyboard (default)
- 104-key PC style keyboard

The setting should match the type of keyboard that you are connecting to the unit. This will be important for correct mapping of the keyboard within the emulation sessions.

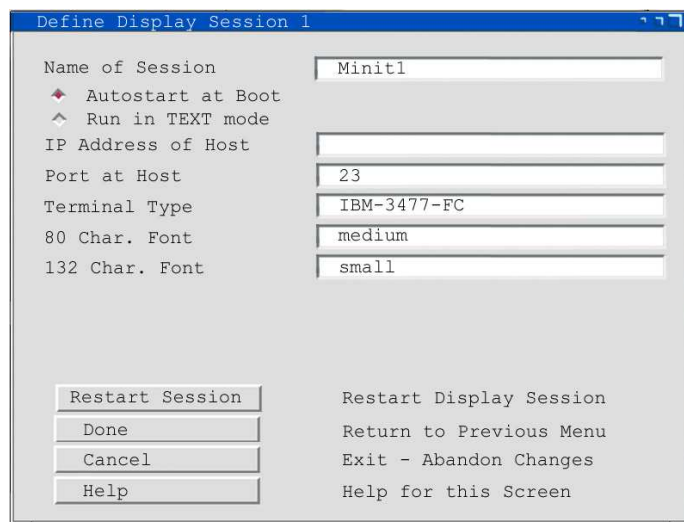


If you need to remap any of the keys, the remapping utility will assist you. See **Operation** for more information about keyboards.

Setup 5250 Sessions



You can configure up to 5 Display sessions and up to 3 printer sessions. Click done when you are finished, in order to save your changes.



Enter the name of the Session and the IP address of the AS/400. *The name of the session needs to be unique.* The AS/400 will not let two sessions have the same name. You can leave the rest of the boxes with the default values. Click on the Help button for more information about each field.

Free Manuals Download Website

<http://myh66.com>

<http://usermanuals.us>

<http://www.somanuals.com>

<http://www.4manuals.cc>

<http://www.manual-lib.com>

<http://www.404manual.com>

<http://www.luxmanual.com>

<http://aubethermostatmanual.com>

Golf course search by state

<http://golfingnear.com>

Email search by domain

<http://emailbydomain.com>

Auto manuals search

<http://auto.somanuals.com>

TV manuals search

<http://tv.somanuals.com>