

# Rinnai®

EXPERIENCE OUR INNOVATION™

## Boiler Applications Drawings



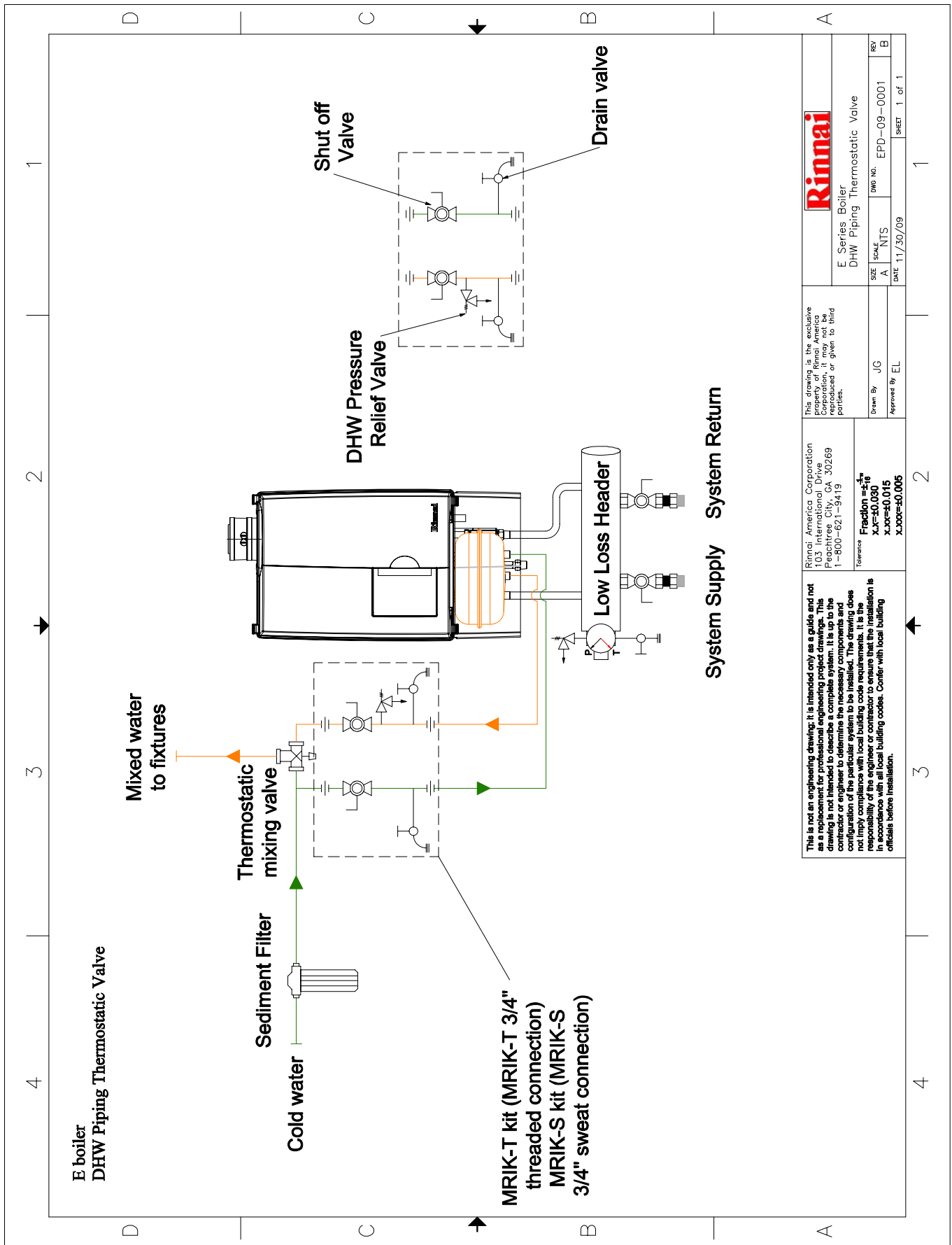
80000026 Rev B

07//2010

# Contents

<b>Drawing No.</b>	<b>Boiler Model</b>	<b>Description</b>	
EPD-09-0001 Rev B.....	E Series Boiler .....	DHW Piping Thermostatic Valve .....	3
EPA-09-0001 Rev B.....	E Series Boiler .....	Single Zone.....	4
QPD-09-0001 Rev B .....	Q175C Boiler .....	DHW Recirculation .....	5
QPD-09-0002 Rev B .....	Q Series Boiler .....	DHW from Indirect Tank .....	6
QPD-09-0003 Rev B .....	Q Series Boiler .....	Single Zone Priority DHW.....	7
QPD-09-0004 Rev B .....	Q Series Boiler.....	4 Zone Valve with DHW .....	8
QPA-09-0001 Rev C .....	Q Series Boiler.....	3 On-Off High Temperature Zones.....	9
QPA-09-0002 Rev B.....	Q Series Boiler.....	3 Way Thermostatic Mixing .....	10
QPA-09-0003 Rev B.....	Q Series Boiler.....	3 Way Motorized Mixing .....	11
QPA-09-0004 Rev B.....	Q Series Boiler.....	3 Zone Valve.....	12
QPA-09-0005 Rev C .....	Q Series Boiler.....	Direct Coupled Radiant .....	13
QPA-09-0006 Rev B.....	Q Series Boiler.....	Single Zone Split Loop .....	14
QPA-09-0007 Rev B.....	Q Series Boiler.....	Snow Melt System .....	15
QPA-09-0008 Rev B.....	Q Series Boiler.....	3 Zone Pumps .....	16
QPA-09-0009 Rev B.....	Q & E Series Boilers .....	Condensate Plumbing with and without Neutralizer .....	17
QPC-09-0001 Rev B .....	Q Series Boilers.....	2 Boiler Install .....	18
QPC-09-0002 Rev B .....	Q Series Boilers.....	3 Boiler Install .....	19
QPC-09-0003 Rev B .....	Q Series Boilers.....	2 Boilers with DHW.....	20
QEC-09-0001 Rev A .....	Q Series Boilers.....	2 Boilers with DHW Indirect Tank.....	21
QED-09-0001 Rev B .....	Q Series Boilers.....	Single Zone Circuit with Priority DHW.....	22
QED-09-0002 Rev A .....	Q Series Boilers.....	4 Zone Valves with Priority DHW .....	23
LEGEND Rev A.....	Q & E Series Boilers .....	Legend.....	24

Rinnai is continually updating and improving products; therefore, drawings and specifications are subject to change without prior notice. Local, state, provincial and federal codes must be adhered to prior to installation.



This is not an engineering drawing; it is intended only as a guide and not as a replacement for professional engineering project drawings. This drawing is not intended to describe a complete system. It is up to the contractor or engineer to determine the necessary components and dimensions of the particular system to be installed. The engineer does not in connection with local building codes. It is the responsibility of the engineer or contractor to ensure that the installation is in accordance with all local building codes. Confer with local building officials before installation.

Rinnai America Corporation  
103 International Drive  
Peachtree City, GA 30269  
1-800-621-3419

Tolerance  
Fraction = 1/16  
X.XX = ±0.030  
X.XXX = ±0.015  
X.XXXX = ±0.005

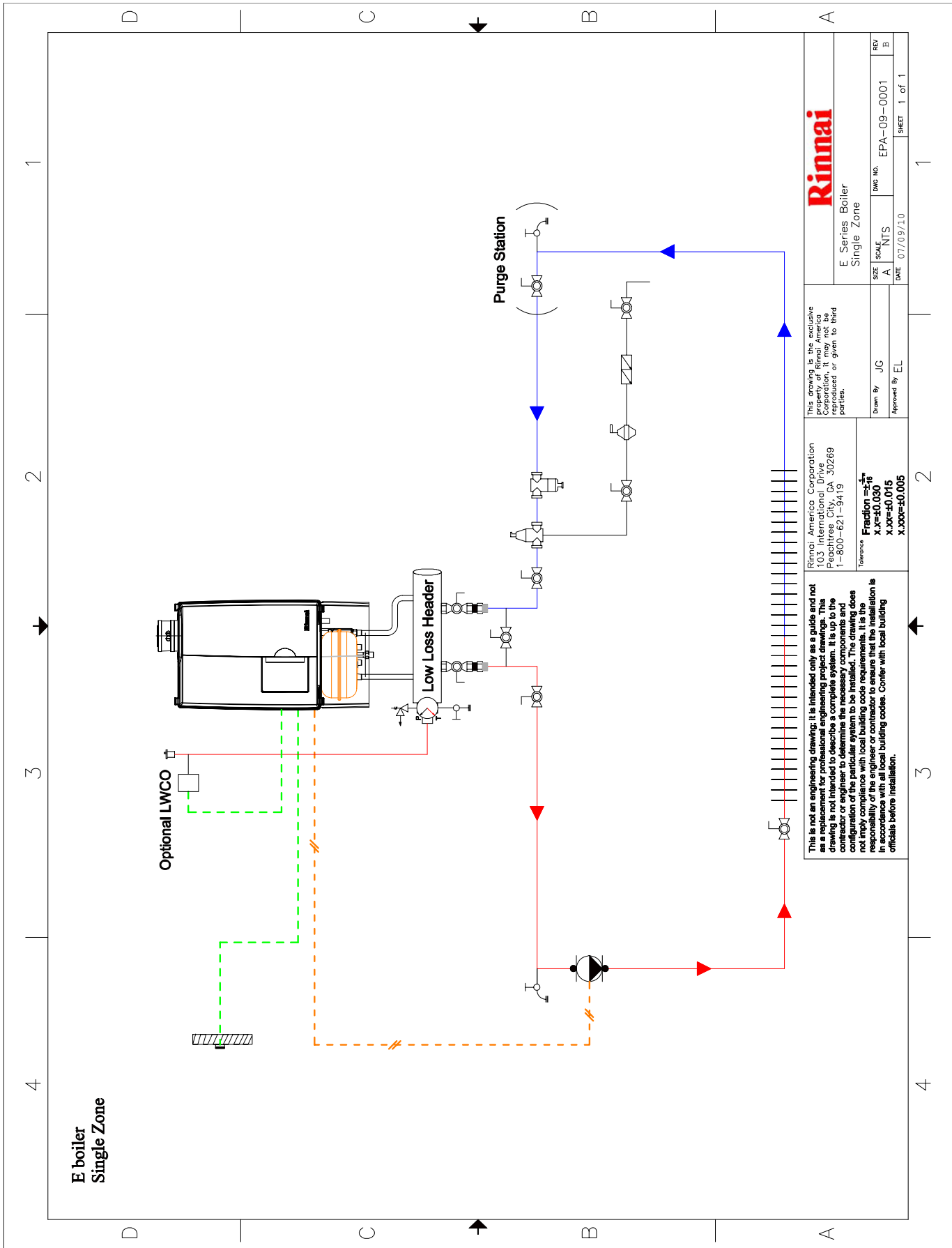
This drawing is the exclusive property of Rinnai America Corporation; it may not be reproduced or given to third parties.

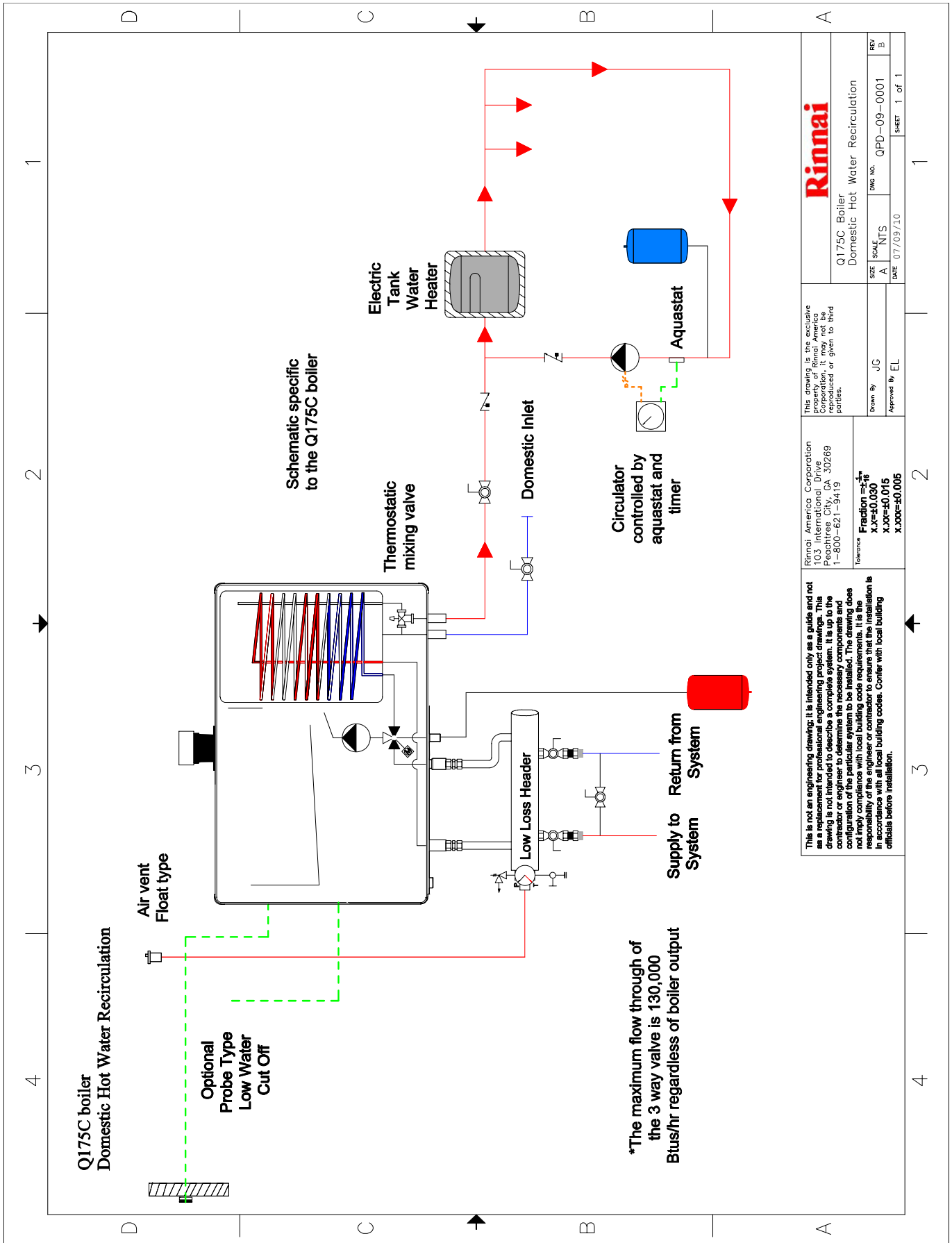
Drawn By: JG  
Approved By: EL

Rinnai  
E Series Boiler  
DHW Piping Thermostatic Valve

SIZE: A  
SCALE: NTS  
DATE: 11/30/09

REV: B  
SHEET: 1 of 1





This is not an engineering drawing. It is intended only as a guide and not as a replacement for professional engineering project drawings. This drawing is not intended to describe a complete system. It is up to the contractor or engineer to determine the necessary components and configuration of the particular system to be installed. The drawing does not imply compliance with local building code requirements. It is the responsibility of the engineer or contractor to ensure that the installation is in accordance with all local building codes. Confer with local building officials before installation.

Rinnai America Corporation  
103 International Drive  
Peachtree City, GA 30269  
1-800-621-9419

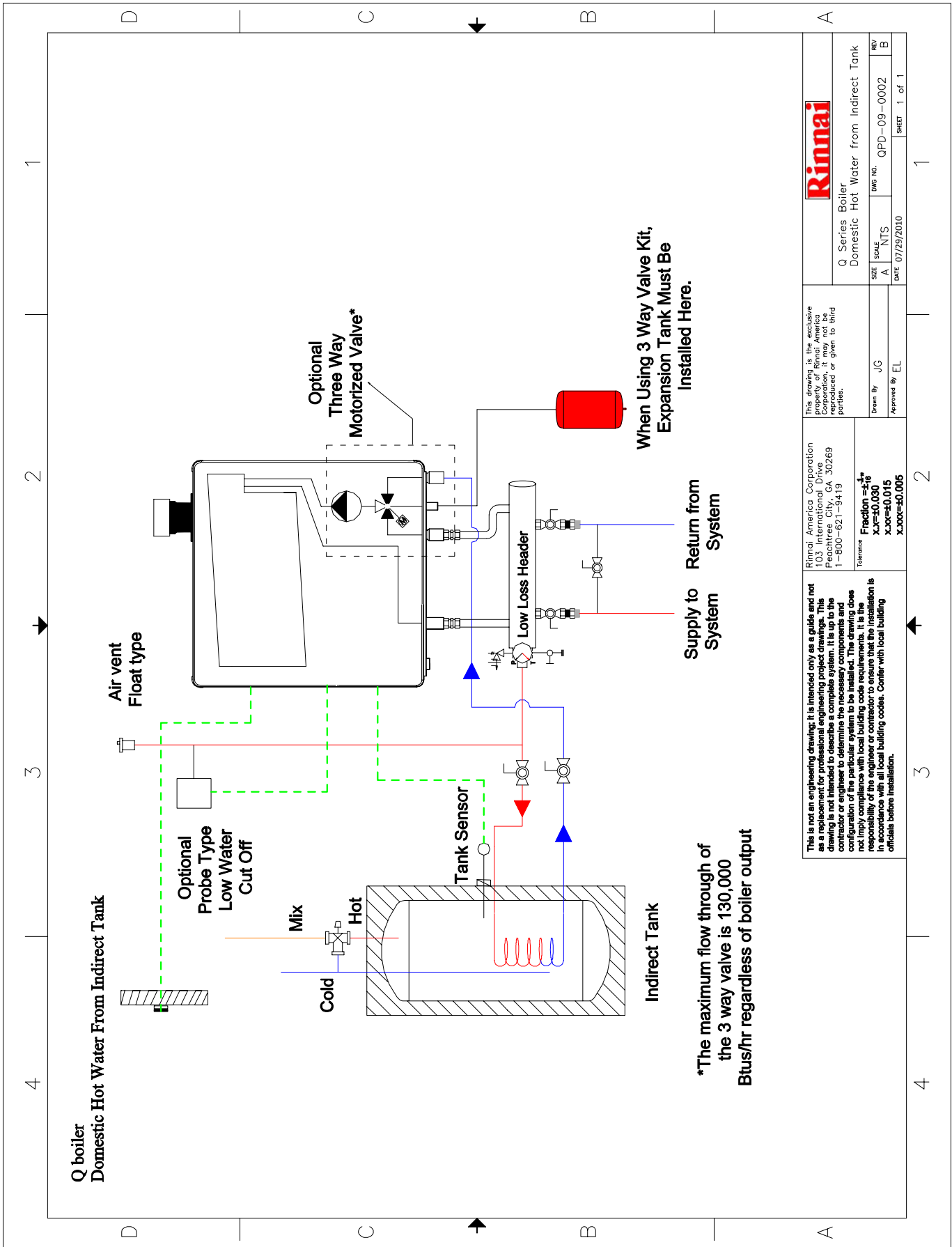
This drawing is the exclusive property of Rinnai America Corporation. It may not be reproduced or given to third parties.

Drawn By: JG  
Approved By: EL

Q175C Boiler Domestic Hot Water Recirculation

SIZE: A  
SCALE: NTS  
DATE: 07/09/10  
DWG NO.: QPD-09-0001  
REV: B  
SHEET: 1 of 1

Tolerance:  
Fraction =  $\frac{x}{16}$   
x.xx = ±0.015  
x.xxx = ±0.005



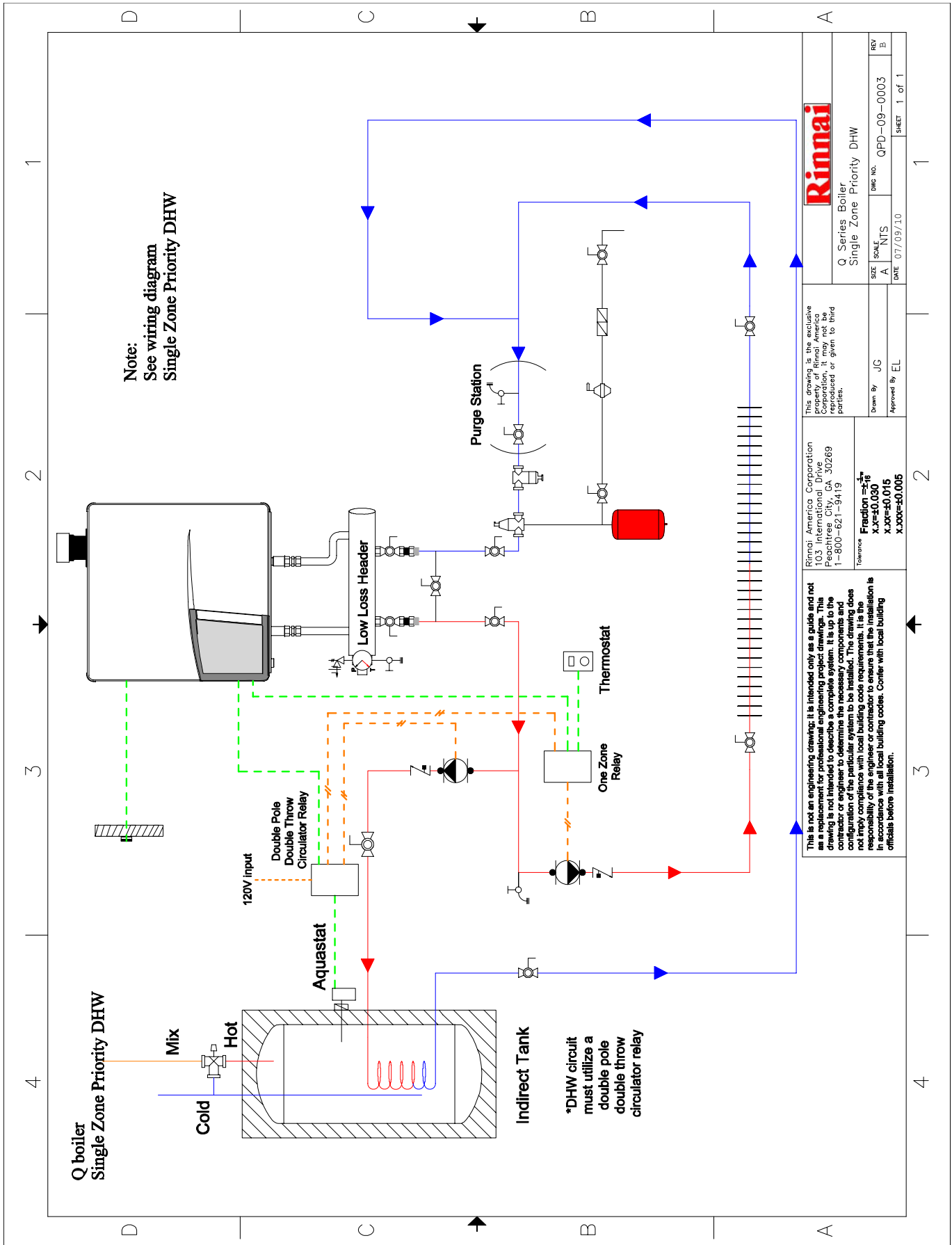
		Q Series Boiler	
		Domestic Hot Water from Indirect Tank	
Drawn By	JC	Scale	NTS
Approved By	EL	DWG NO.	QPD-09-0002
		DATE	07/29/2010
		SHEET 1 of 1	

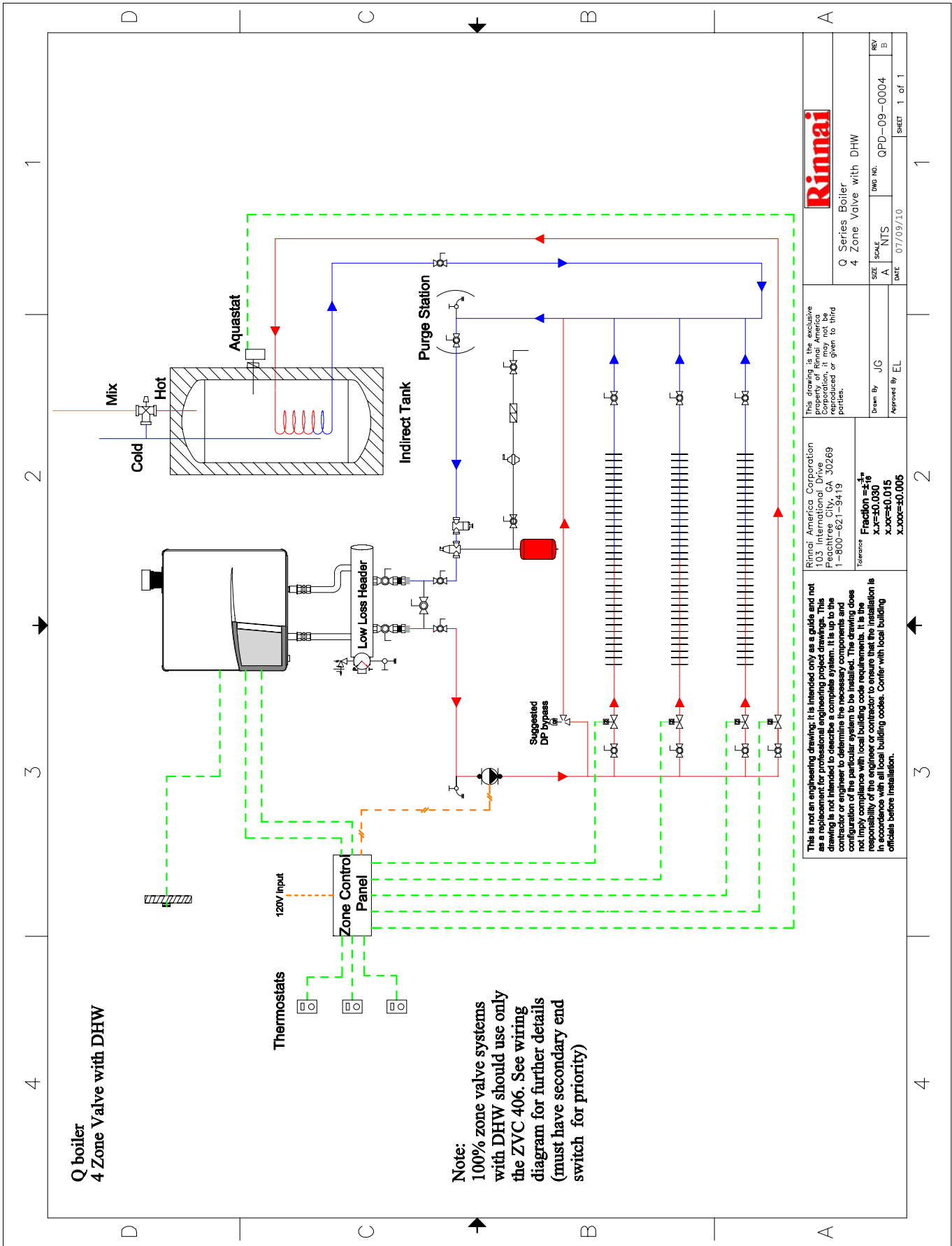
This drawing is the exclusive property of Rinnai America Corporation, it may not be reproduced or given to third parties.

Rinnai America Corporation  
103 International Drive  
Peachtree City, GA 30269  
1-800-621-9419

Tolerances  
Fraction  $\pm \frac{1}{16}$   
X.XX  $\pm 0.030$   
X.XXX  $\pm 0.015$   
X.XXXX  $\pm 0.005$

This is not an engineering drawing; it is intended only as a guide and not as a replacement for professional engineering project drawings. This drawing is not intended to describe a complete system. It is up to the contractor or engineer to determine the necessary components and configuration of the particular system to be installed. The drawing does not imply compliance with local building code requirements. It is the responsibility of the engineer or contractor to ensure that the installation is in accordance with all local building codes. Center with local building officials before installation.





**Q boiler  
4 Zone Valve with DHW**

Thermostats  
120V Input  
Zone Control Panel

**Note:**  
100% zone valve systems with DHW should use only the ZVC 406. See wiring diagram for further details (must have secondary end switch for priority)



This drawing is the exclusive property of Rinnai America Corporation, Peachtree City, GA 30269 and is not to be reproduced or given to third parties.

This is not an engineering drawing; it is intended only as a guide and not as a replacement for professional engineering project drawings. This drawing is not intended to describe a complete system. It is up to the contractor or engineer to determine the necessary components and configuration of the particular system to be installed. The drawing does not imply compliance with local building code requirements. It is the responsibility of the engineer or contractor to ensure that the installation is in accordance with applicable building codes. Confer with local building officials before installation.

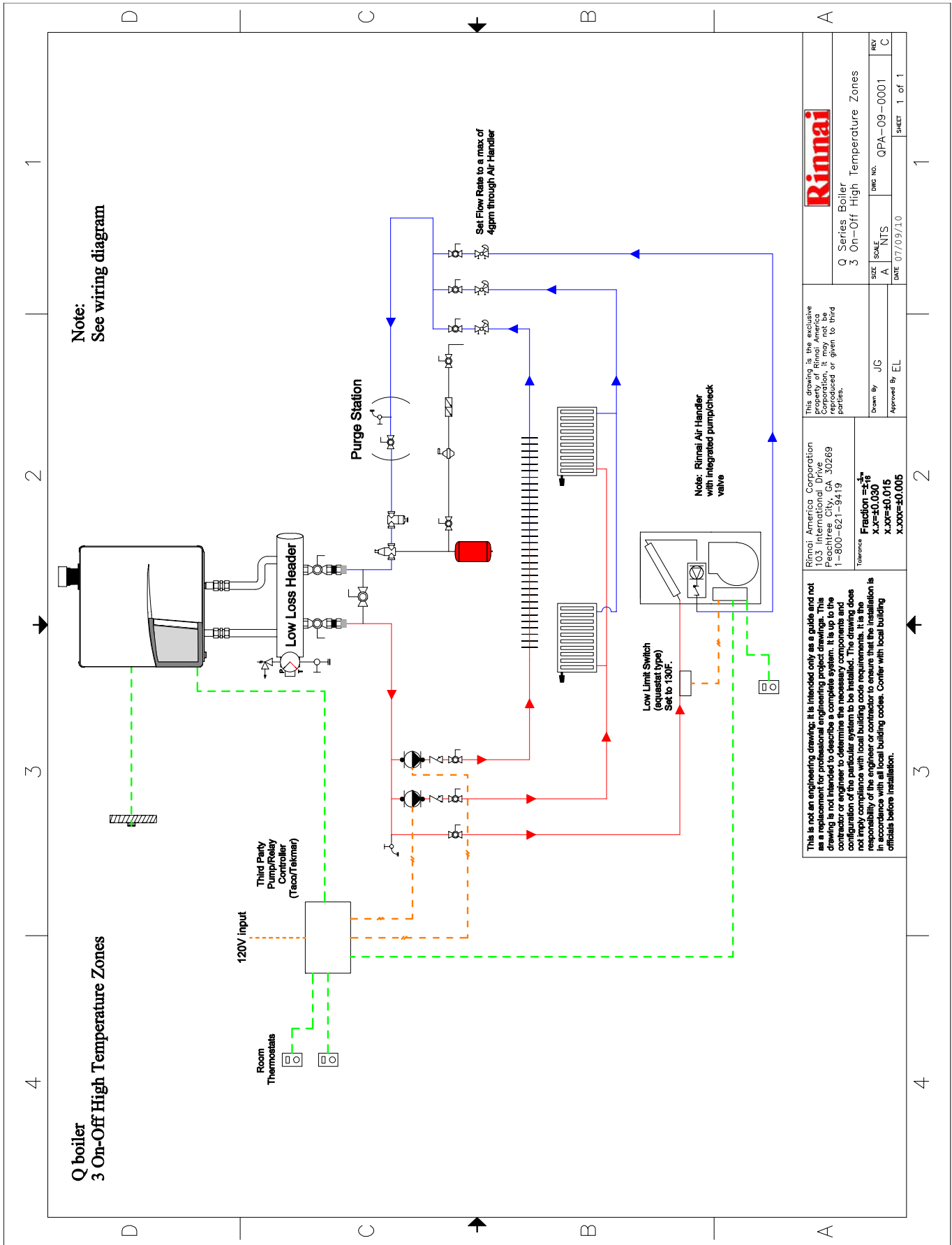
**Q Series Boiler  
4 Zone Valve with DHW**

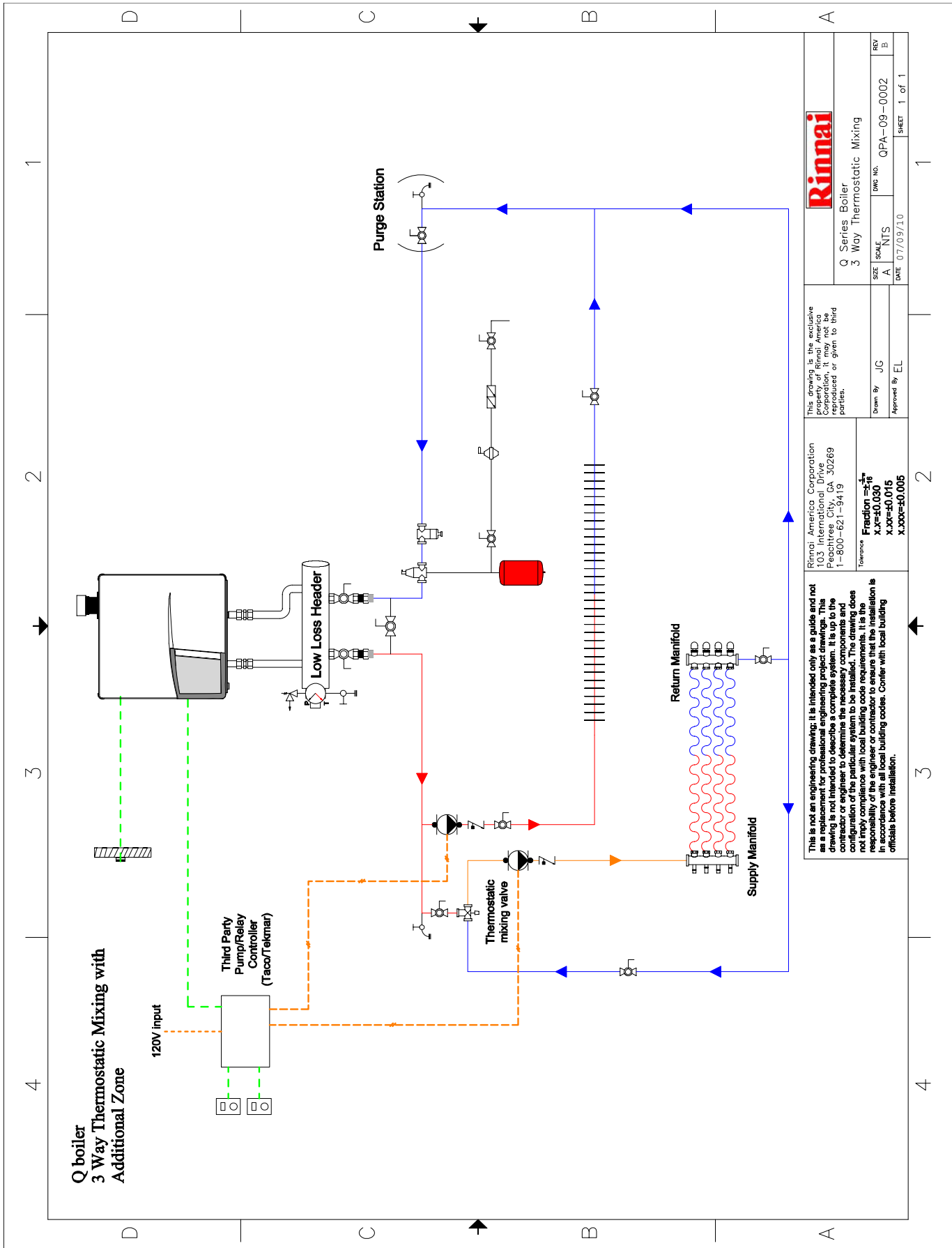
SIZE	SCALE	DWG NO.	REV
A	NTS	QPD-09-0004	B
DATE		SHEET	
07/09/10		1 of 1	

Drawn By: J/C  
Approved By: EL

Tolerances:  
Fraction = 1/16"  
X.XX = ±0.030"  
X.XXX = ±0.015"  
X.XXXX = ±0.005"







This is not an engineering drawing. It is intended only as a guide and not as a replacement for professional engineering project drawings. This drawing is not intended to describe a complete system. It is up to the contractor or engineer to determine the necessary components and configuration of the particular system to be installed. The drawing does not imply compliance with local building code requirements. It is the responsibility of the engineer or contractor to ensure that the installation is in accordance with all local building codes. Confer with local building officials before installation.

Rinnai America Corporation  
103 International Drive  
Peachtree City, GA 30269  
1-800-621-9419

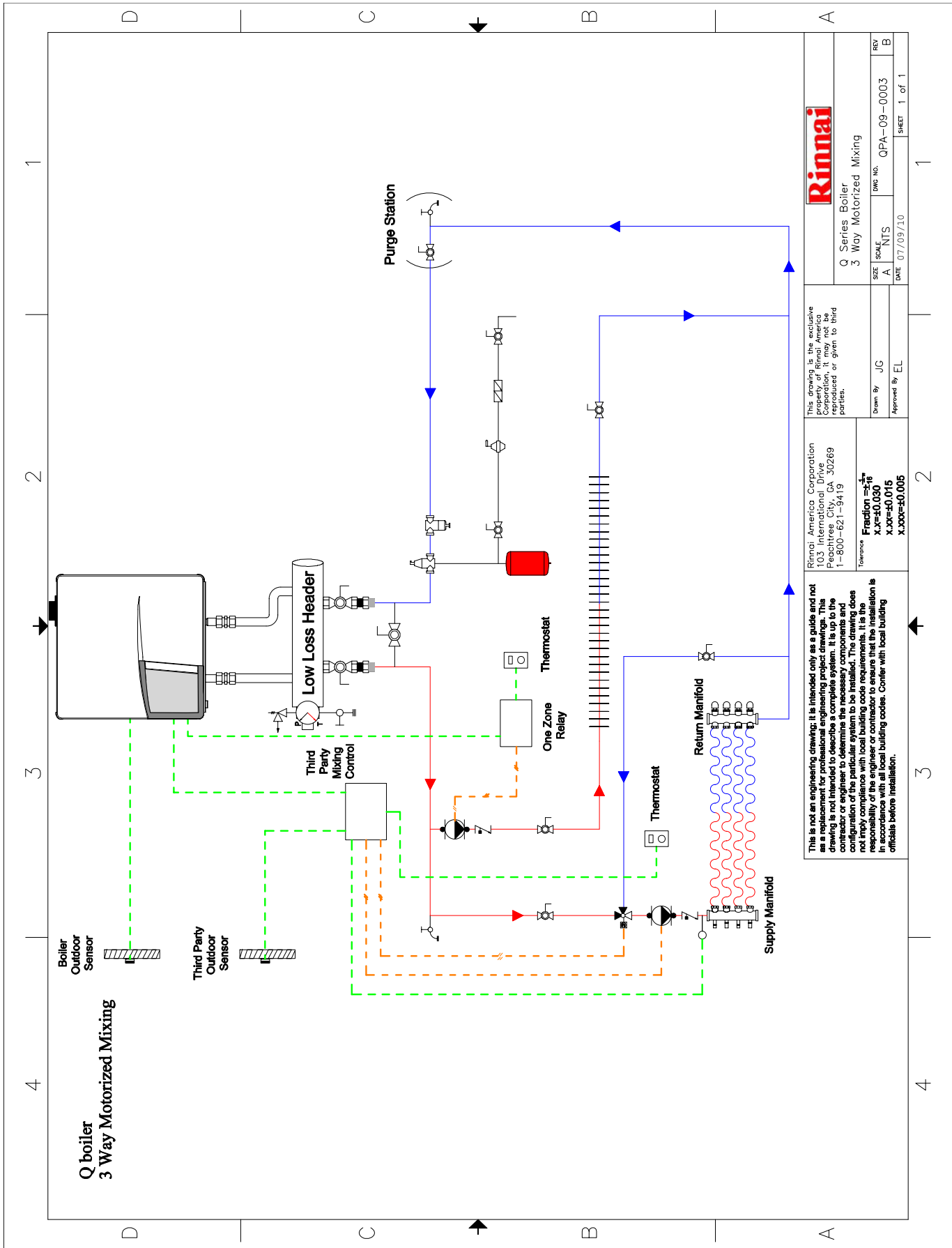
Tolerance  
Fraction =  $\frac{1}{16}$   
X.XX=±0.030  
X.XXX=±0.015  
X.XXXX=±0.005

This drawing is the exclusive property of Rinnai America Corporation. It may not be reproduced or given to third parties.

Drawn By: JG  
Approved By: EL

DATE: 07/09/10

SIZE: A  
SCALE: NTS  
DWG No.: QPA-09-0002  
REV: B  
SHEET: 1 of 1



This is not an engineering drawing. It is intended only as a guide and not as a replacement for professional engineering project drawings. This drawing is not intended to describe a complete system. It is up to the contractor or engineer to determine the necessary components and configuration of the particular system to be installed. The drawing does not imply compliance with local building code requirements. It is the responsibility of the engineer or contractor to ensure that the installation is in accordance with all local building codes. Confer with local building officials before installation.

Rinnai America Corporation  
103 International Drive  
Peachtree City, GA 30269  
1-800-621-9419

Tolerance  
Fraction =  $\frac{1}{16}$   
X.XX=±0.030  
X.XXX=±0.015  
X.XXXX=±0.005

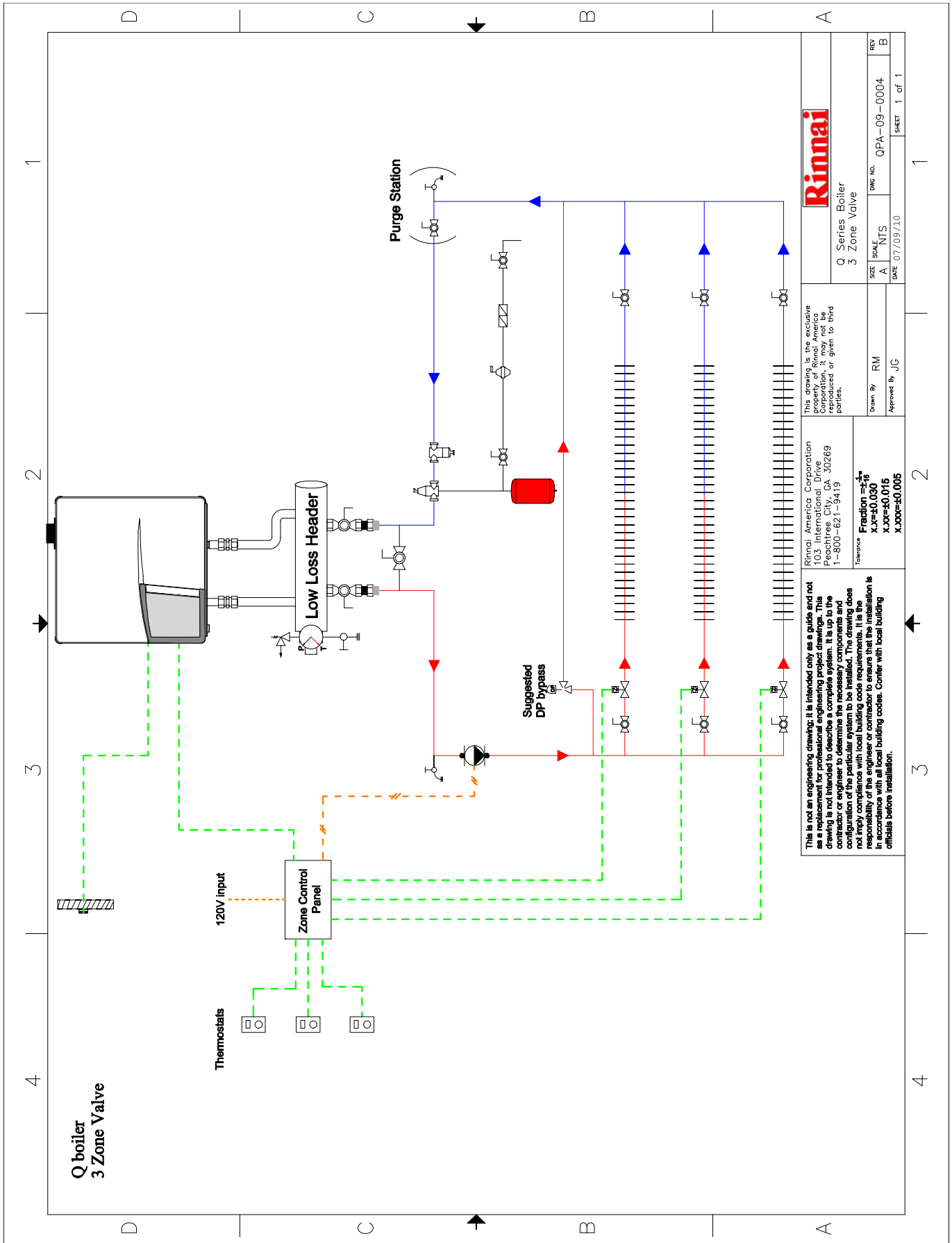
This drawing is the exclusive property of Rinnai America Corporation. It may not be reproduced or given to third parties.

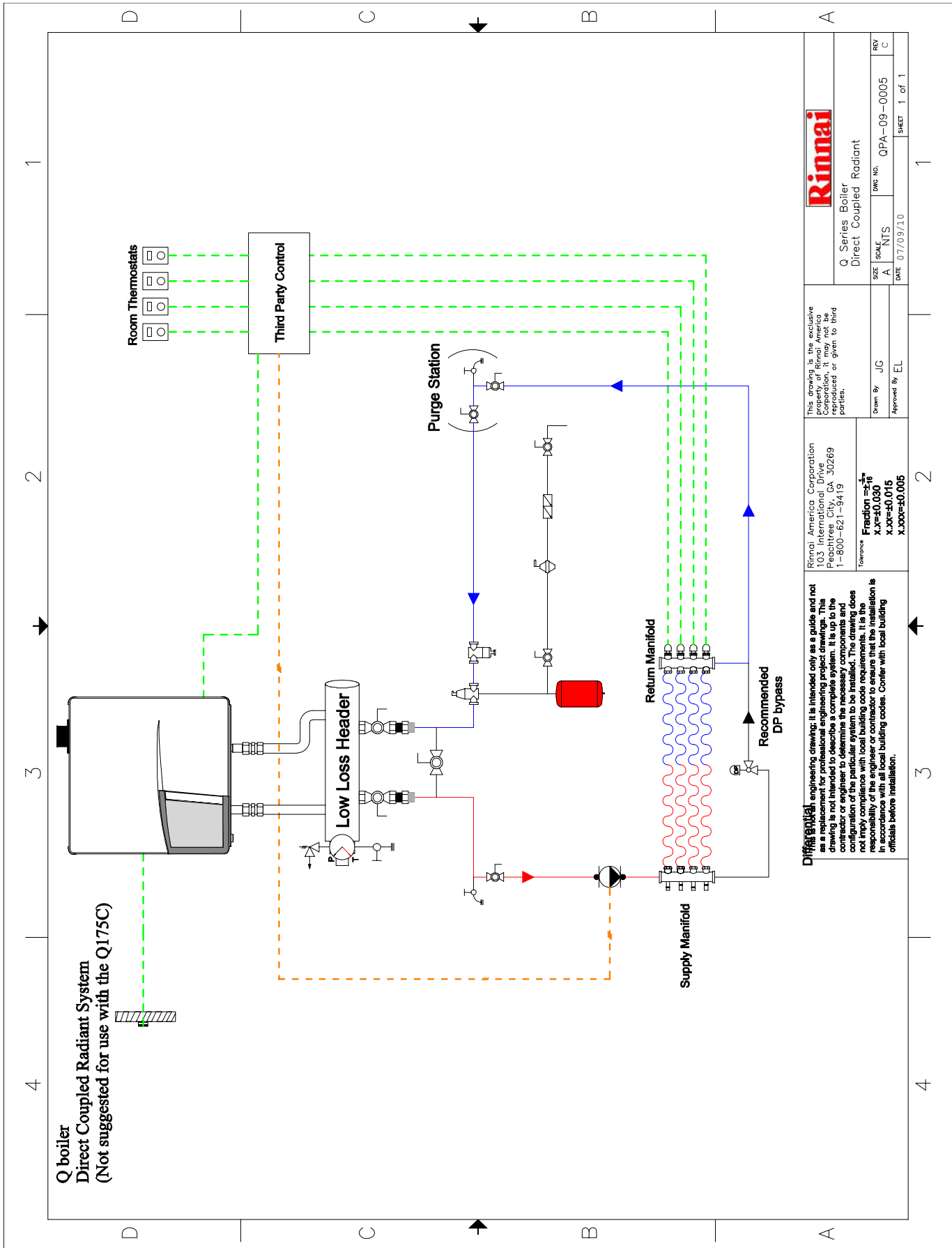
Drawn By: JG  
Approved By: EL

Rinnai  
Q Series Boiler  
3 Way Motorized Mixing

SIZE: A  
SCALE: NTS  
DATE: 07/09/10  
DWG No.: QPA-09-0003  
REV: B

SHEET 1 of 1





<b>Rinnai</b>	
Q Series Boiler Direct Coupled Radiant	
SIZE	SCALE
A	A
DATE	REV
07/09/10	C
DWG No. QPA-09-0005	
SHEET 1 of 1	

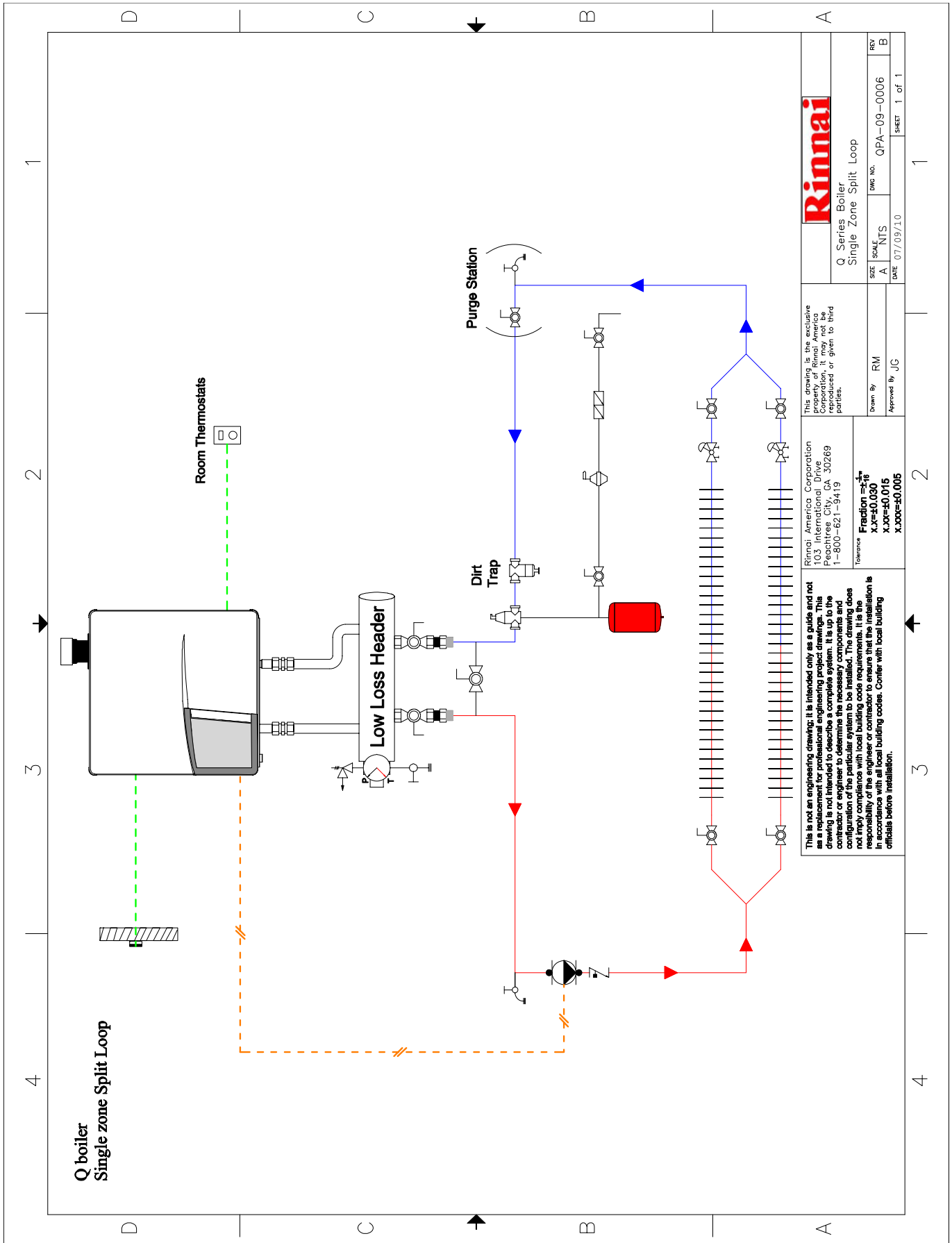
This drawing is the exclusive property of Rinnai America Corporation. It may not be reproduced or given to third parties.

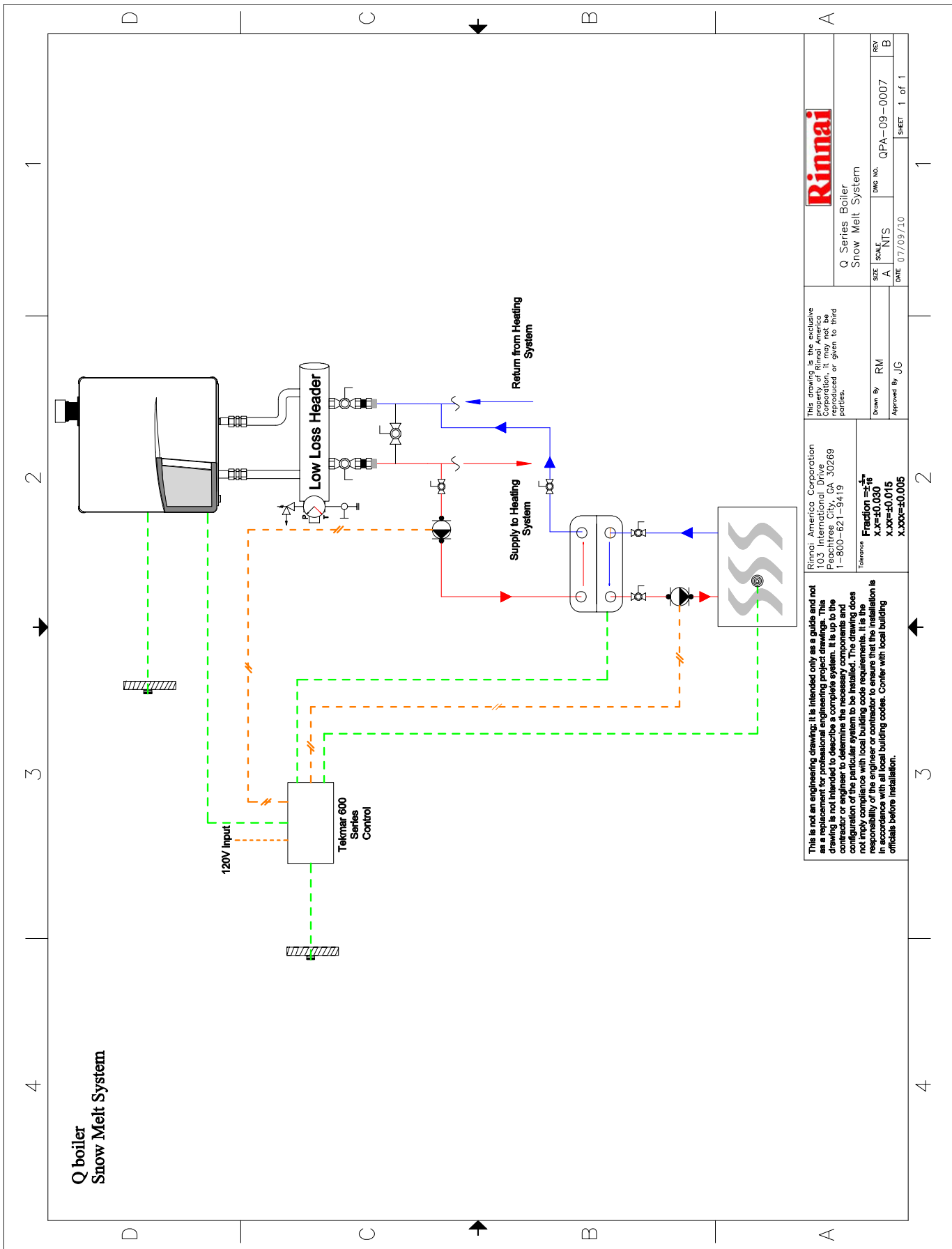
Drawn By: JG  
Approved By: EL

Rinnai America Corporation  
103 International Drive  
Peachtree City, GA 30269  
1-800-621-9419

Tolerance  
Fraction =  $\frac{1}{16}$   
X.XX = ±0.015  
X.XXX = ±0.005

**Disclaimer:** This is a preliminary engineering drawing. It is intended only as a guide and not as a replacement for professional engineering project drawings. This drawing is not intended to describe a complete system. It is up to the contractor or engineer to determine the necessary components and configuration of the particular system to be installed. The drawing does not imply compliance with local building code requirements. It is the responsibility of the engineer or contractor to ensure that the installation is in accordance with all local building codes. Confer with local building officials before installation.





This is not an engineering drawing. It is intended only as a guide and not as a replacement for professional engineering project drawings. This drawing is not intended to describe a complete system. It is up to the contractor or engineer to determine the necessary components and configuration of the particular system to be installed. The drawing does not imply compliance with local building code requirements. It is the responsibility of the engineer or contractor to ensure that the installation is in accordance with all local building codes. Confer with local building officials before installation.

Rinnai America Corporation  
103 International Drive  
Peachtree City, GA 30269  
1-800-621-9419

This drawing is the exclusive property of Rinnai America Corporation. It may not be reproduced or given to third parties.

Drawn By: RM  
Approved By: JJC

DATE: 07/09/10

SIZE: A  
SCALE: NTS

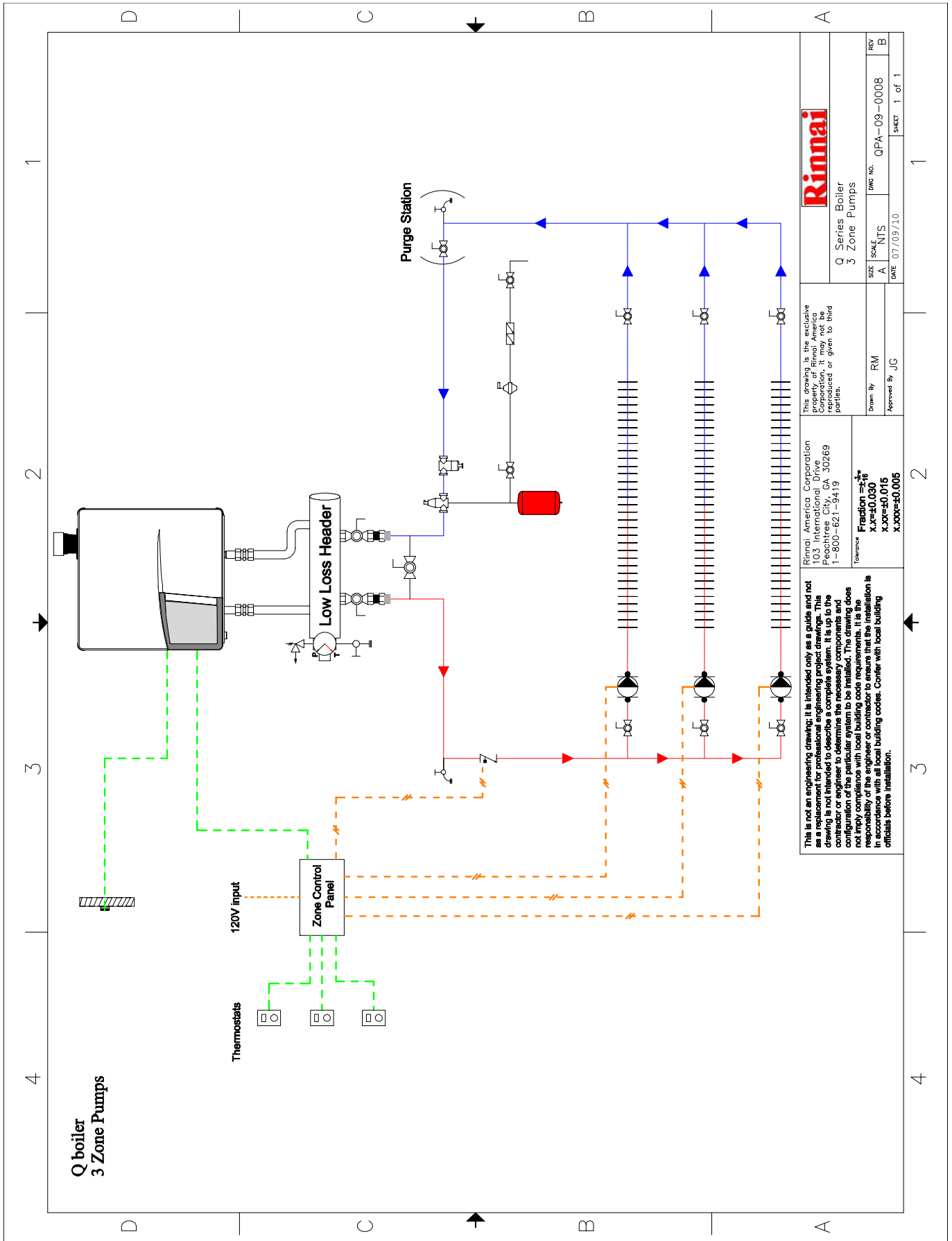
DWG No.: QPA-09-0007

REV: B

SHEET 1 of 1



Q Series Boiler  
Snow Melt System



This is not an engineering drawing. It is intended only as a guide and not as a replacement for professional engineering project drawings. This drawing is not intended to describe a complete system. It is up to the contractor or engineer to determine the necessary components and configuration of the particular system to be installed. The drawing does not imply compliance with local building code requirements. It is the responsibility of the engineer or contractor to ensure that the installation is in accordance with all local building codes. Confer with local building officials before installation.

**Rinnai**  
Rinnai America Corporation  
103 International Drive  
Peachtree City, GA 30269  
1-800-621-9419

Drawn By: RM  
Approved By: JJC

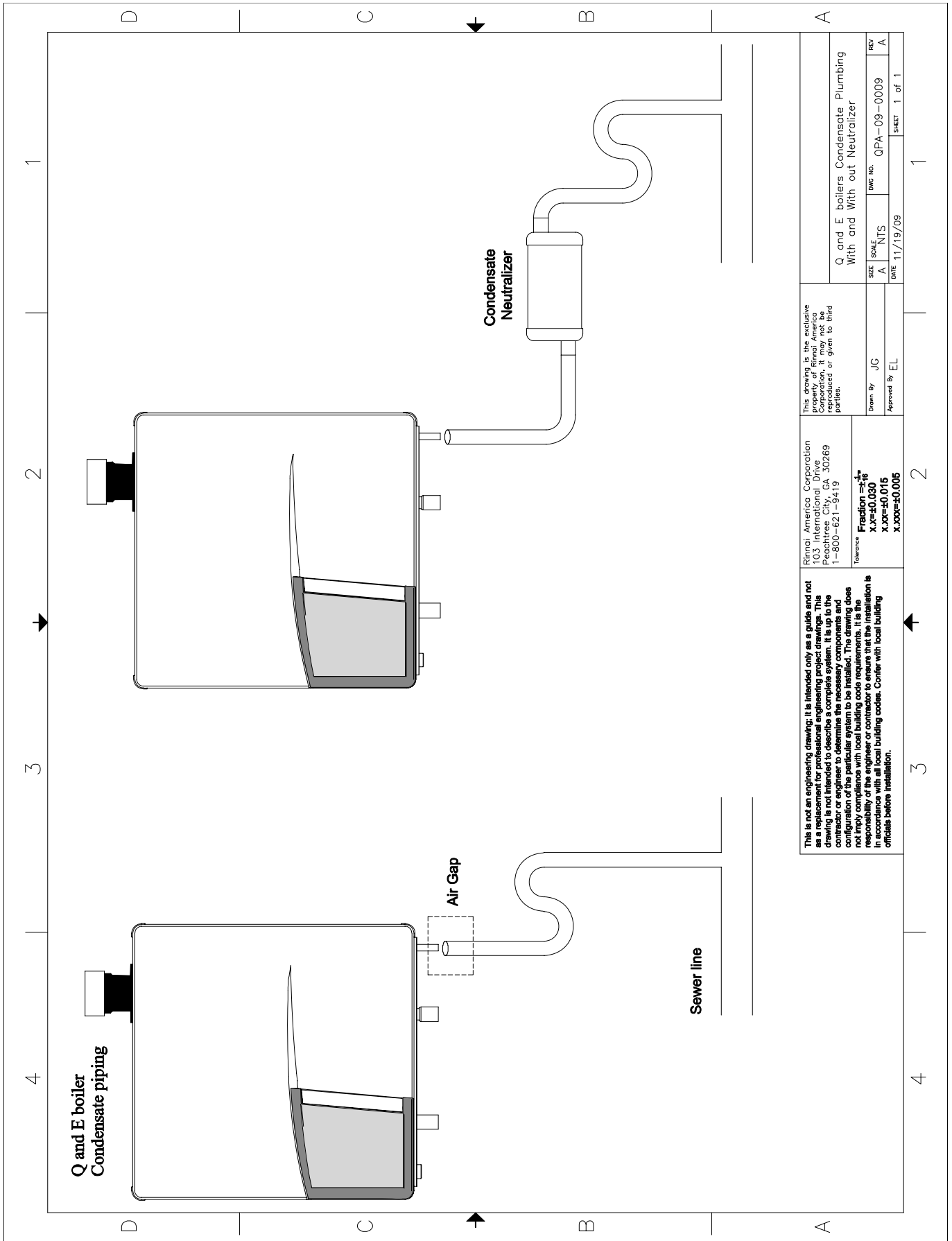
Q Series Boiler  
3 Zone Pumps

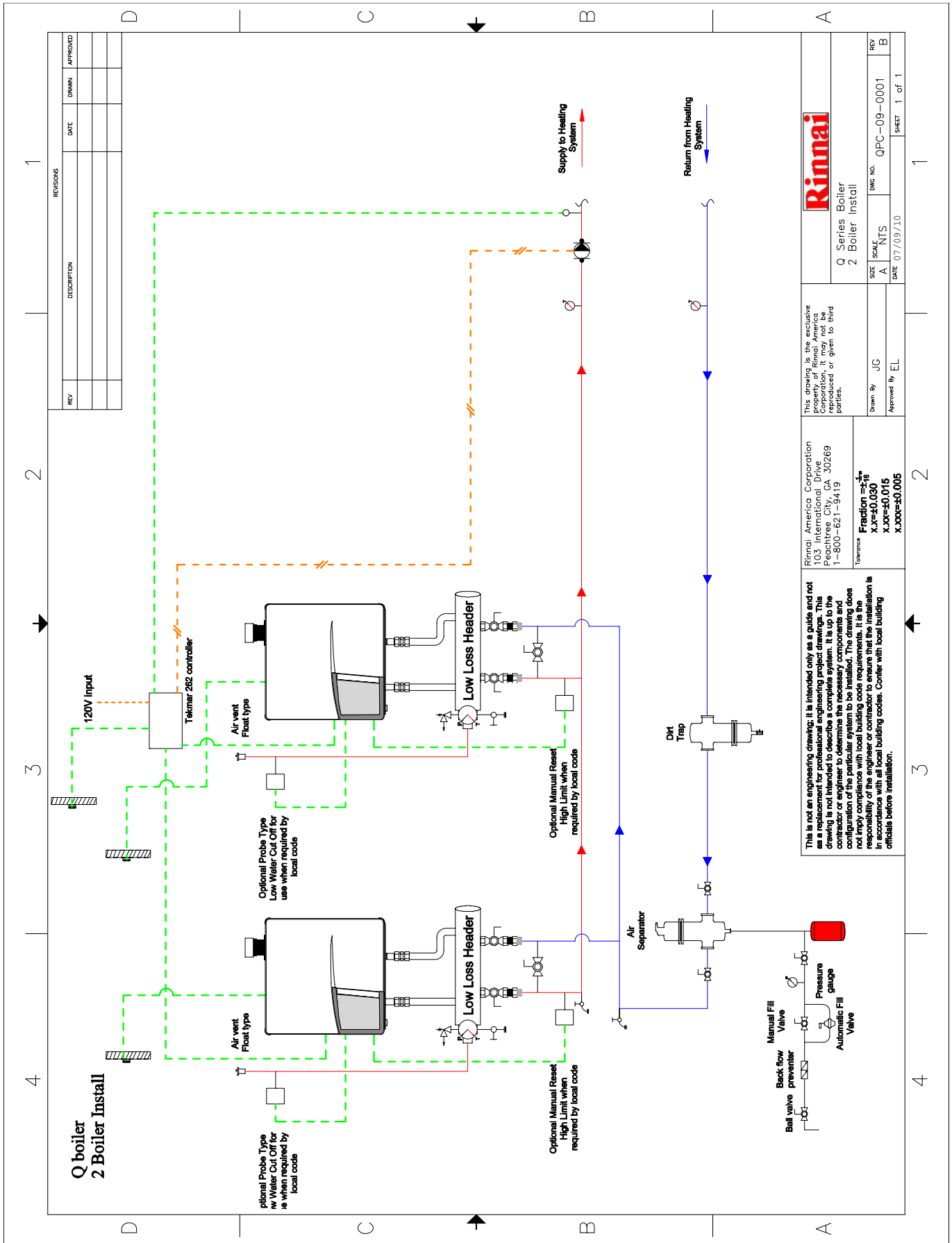
DATE: 07/09/10  
SHEET: 1 of 1

SIZE: A  
SCALE: NTS  
DWG. NO.: QPA-09-0008  
REV: B

Tolerance:  
Fraction =  $\frac{1}{16}$   
X.XX = ±0.015  
X.XXX = ±0.005







REV	DESCRIPTION	DATE	DRAWN	APPROVED

<p>This drawing is the exclusive property of Rinnai America Corporation. It may not be reproduced or given to third parties.</p>	
Drawn By	JG
Approved By	EL
DATE	07/09/10
SIZE	A
SCALE	NTS
DWG. NO.	QPC-09-0001
REV	B

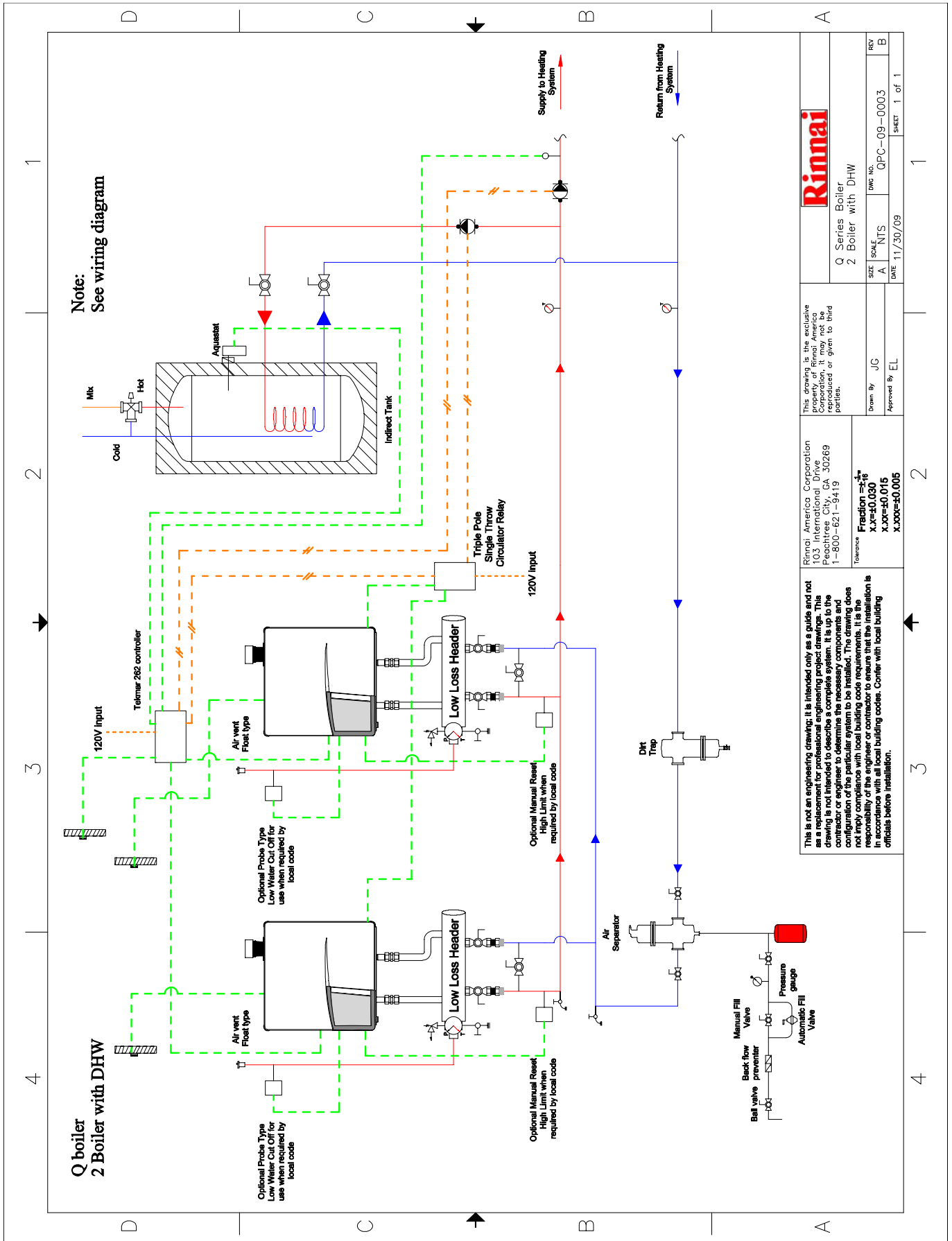
Rinnai America Corporation  
103 International Drive  
Peachtree City, GA 30269  
1-800-621-9419

Tolerance  
Fraction =  $\frac{1}{16}$   
X.XX=±0.030  
X.XXX=±0.015  
X.XXXX=±0.005

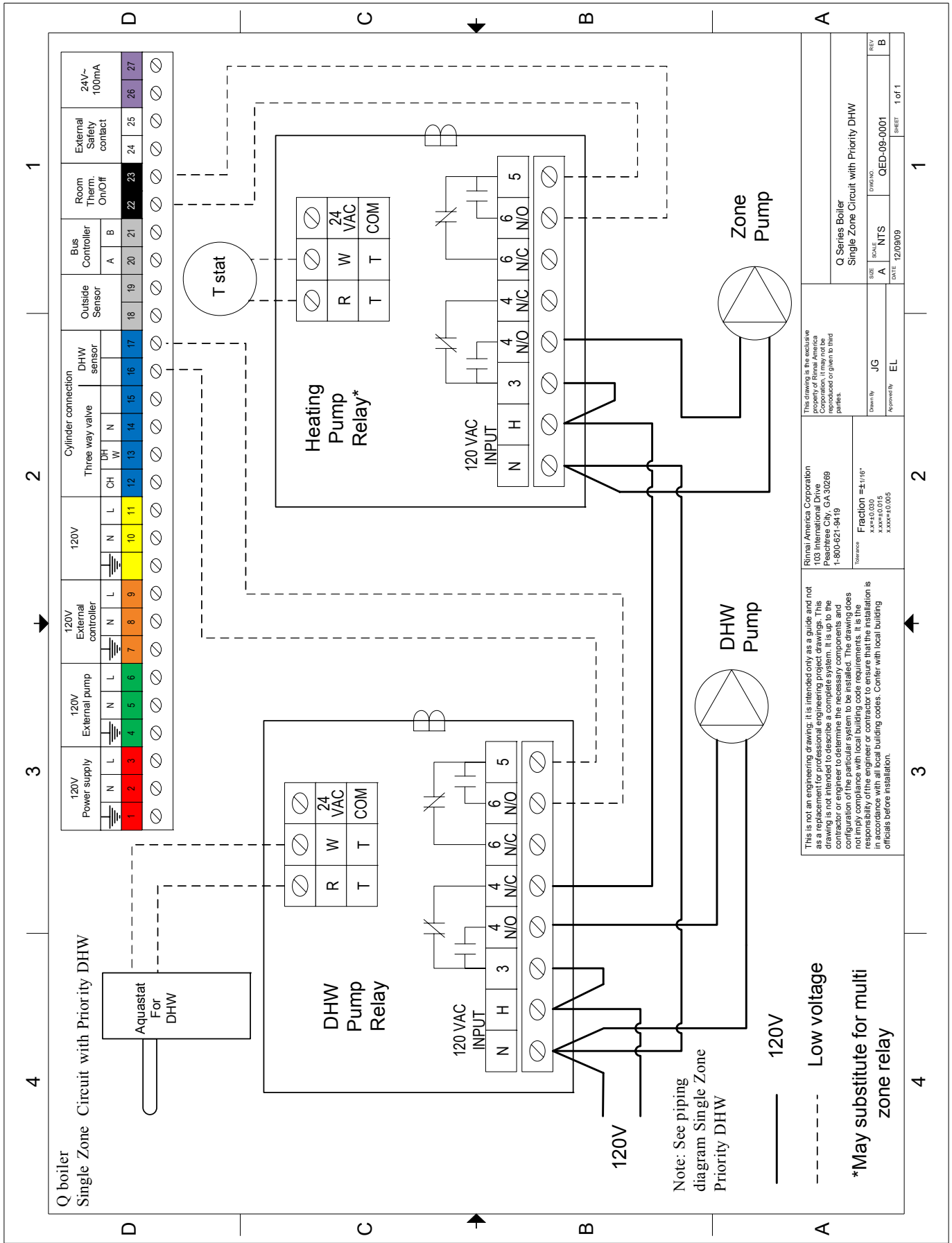
This is not an engineering drawing. It is intended only as a guide and not as a replacement for professional engineering project drawings. This drawing is not intended to describe a complete system. It is up to the contractor or engineer to determine the necessary components and configuration of the particular system to be installed. The drawing does not imply compliance with local building code requirements. It is the responsibility of the engineer or contractor to ensure that the installation is in accordance with all local building codes. Confer with local building officials before installation.

<p><b>Rinnai</b></p> <p>Q Series Boiler 2 Boiler Install</p>	
DATE	07/09/10
SHEET	1 of 1









This drawing is the exclusive property of Rheem America Corporation. It may not be reproduced or given to third parties.

Rheem America Corporation  
103 International Drive  
Peachtree City, GA 30269  
1-800-621-9419

Down By: JG  
Approval: EL

Scale: NTS  
Date: 12/09/09

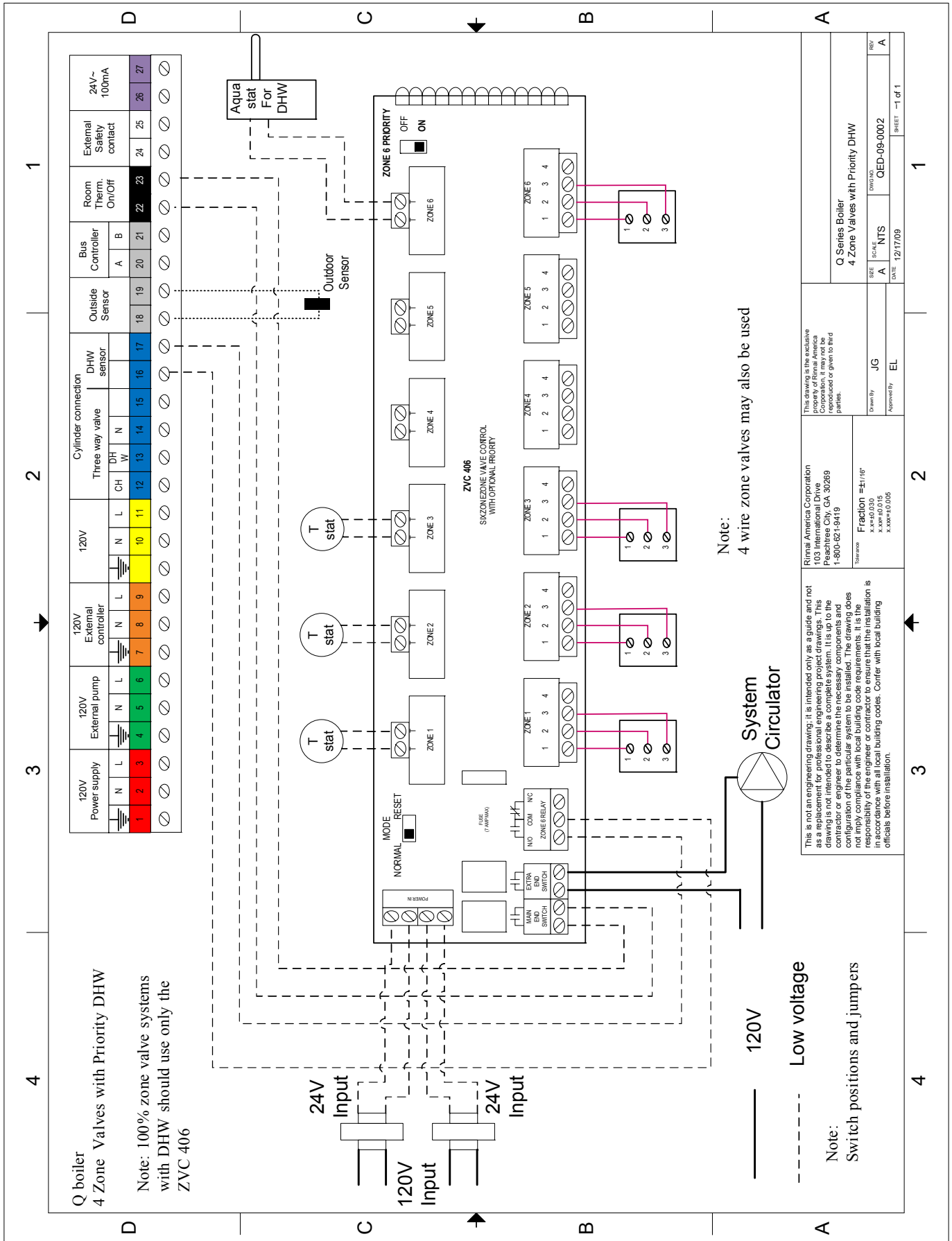
Q Series Boiler  
Single Zone Circuit with Priority DHW

REV B

1 of 1

This is not an engineering drawing; it is intended only as a guide and not as a replacement for professional engineering project drawings. This drawing is not intended to describe a complete system. It is up to the contractor or engineer to determine the necessary components and configuration of the particular system to be installed. The drawing does not imply compliance with local building code requirements. It is the responsibility of the engineer or contractor to ensure that the installation is in accordance with all local building codes. Confer with local building officials before installation.

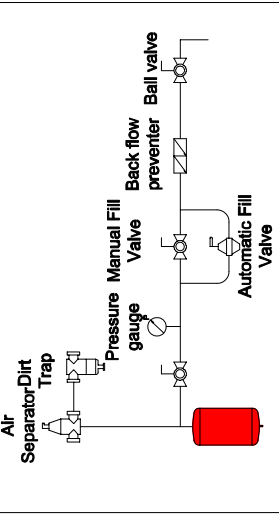
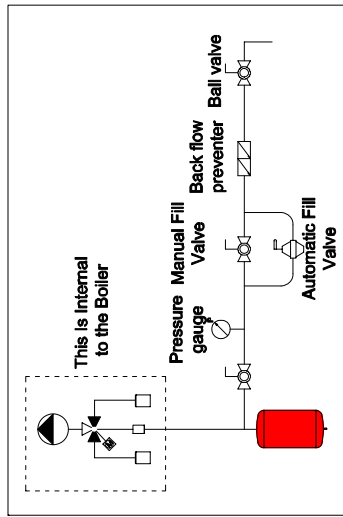
Fraction ±4.718"  
X.X±0.030  
X.XX±0.015  
X.XXX±0.005



This drawing is the exclusive property of Rinnai America Corporation. It may not be reproduced or given to third parties.		Rinnai America Corporation 103 International Drive Peachtree City, GA 30269 1-800-621-9419		This drawing is intended only as a guide and not as a replacement for professional engineering. This drawing is not intended to describe a complete system. It is up to the contractor or engineer to determine the necessary components and configuration of the particular system to be installed. The drawing does not imply compliance with local building code requirements. It is the responsibility of the engineer or contractor to ensure that the installation is in accordance with all local building codes. Confer with local building officials before installation.	
Drawn By	JG	Scale	NTS	REV	A
Approved By	EL	DATE	12/17/09	Q Series Boiler	4 Zone Valves with Priority DHW
Title Block Fraction = 1/16" X.XX=±0.030 X.XXX=±0.015 X.XXX=±0.005			Q Series Boiler 4 Zone Valves with Priority DHW QED-09-0002 SHEET 1 of 1		

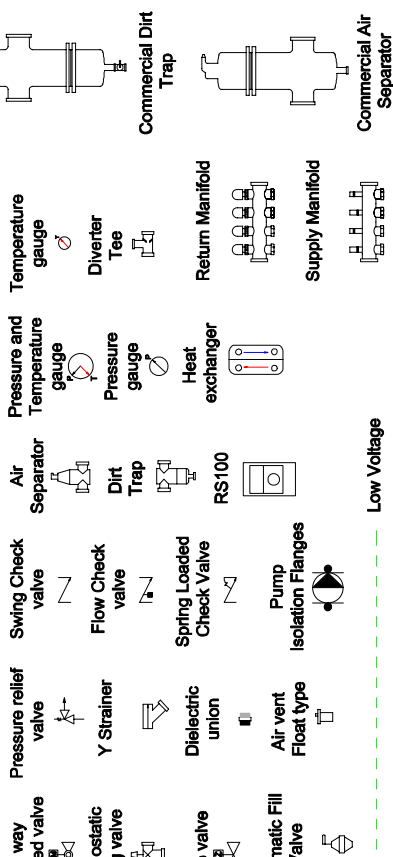
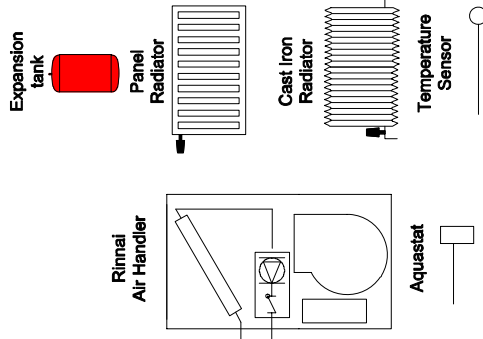
# Rinnai Boilers Legend

The following picture illustrates a suggested arrangement. Some of the fittings are optional.



The following picture illustrates a suggested arrangement. Some of the fittings are optional.

Baseboard Convectors



Low Voltage

High Voltage

This is not an engineering drawing. It is intended only as a guide and not as a replacement for professional engineering project drawings. This drawing is not intended to describe a complete system. It is up to the contractor or engineer to determine the necessary components and configuration of the particular system to be installed. The drawing does not imply compliance with local building code requirements. It is the responsibility of the engineer or contractor to ensure that the installation is in accordance with all local building codes. Confer with local building officials before installation.

Rinnai America Corporation  
103 International Drive  
Peschetree City, GA 30269  
1-800-621-9419

This drawing is the exclusive property of Rinnai America Corporation. It may not be reproduced or given to third parties.

Drawn By	JG
Approved By	EL
DATE	11/19/09
SIZE	A
SCALE	NTS
DWG. NO.	LEGEND
REV	A

Rinnai Boilers Legend

SHEET 1 of 1



# Notes

# Ask about **Rinnai**<sup>®</sup>

Rinnai's other fine products

EXPERIENCE OUR INNOVATION™



## Tankless Water Heaters

- Residential and Commercial Applications
- Continuous Hot Water
- ENERGY STAR<sup>®</sup> qualified models
- Up to 9.8 GPM
- Internal or External Installation
- Digital Temperature Control



## Direct Vent Furnaces

- High Efficiency
- Cool-to-the-touch Cabinet
- Vent Terminal A Included
- Blower Included



## Direct-Vent Fireplace, RHFE-750ETRA

- Up to 83% AFUE Energy Efficiency
- Zero-Clearance Installation
- Available in Four Options of Fronts
- Remotes and Fan Included
- Gas Conversion Kit Available



## Hydronic Air Handler

- Designed for Use with Rinnai Systems
- Domestic Hot Water Priority
- Optional Programmable Thermostat
- Zero Clearance to Combustibles
- Accommodates Standard Cased-Coils



## Boilers

- Residential and Commercial Applications
- ENERGY STAR<sup>®</sup> qualified models
- Up to 96.5% AFUE efficiency
- Compact wall mounted design
- ASME accredited models



## Condensing Tankless Water Heaters

- Residential and Commercial Applications
- ENERGY STAR<sup>®</sup> qualified models
- Up to 95% thermal efficiency
- Internal or External Installation
- Pair up with the Rinnai Air Handler for efficient home heating



## Rinnai Impression - Outdoor Fireplace

- Options include one-sided open, two-sided open, and freestanding.
- No electrical requirements
- Propane or convertible to natural gas with conversion kit provided
- Modular construction offers design flexibility

Register your product at  
[www.rinnaregistration.com](http://www.rinnaregistration.com)  
or call 1-866-RINNAI1 (746-6241)

For information on Rinnai's products contact  
Rinnai America Corporation  
103 International Drive  
Peachtree City, GA 30269  
TOLL FREE: 1-800-621-9419  
FAX: 678-829-1666  
[www.rinnai.us](http://www.rinnai.us)

Boiler Applications Manual  
800000026 Rev B  
7/2010

## Free Manuals Download Website

<http://myh66.com>

<http://usermanuals.us>

<http://www.somanuals.com>

<http://www.4manuals.cc>

<http://www.manual-lib.com>

<http://www.404manual.com>

<http://www.luxmanual.com>

<http://aubethermostatmanual.com>

Golf course search by state

<http://golfingnear.com>

Email search by domain

<http://emailbydomain.com>

Auto manuals search

<http://auto.somanuals.com>

TV manuals search

<http://tv.somanuals.com>