

# Rinnai®

EXPERIENCE OUR INNOVATION™

## Boiler Applications Drawings

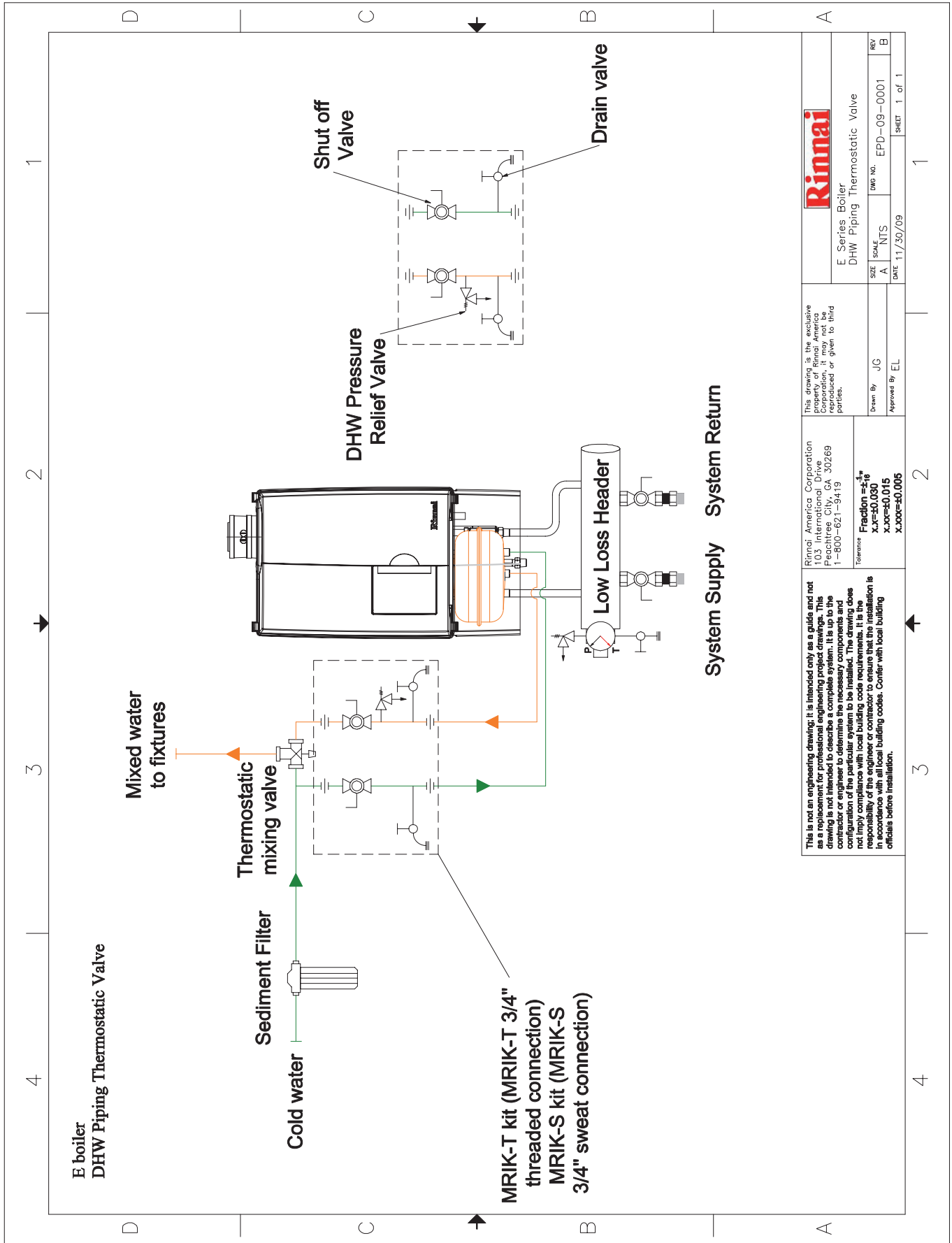


80000026 Rev B

# Contents

<b>Drawing No.</b>	<b>Boiler Model</b>	<b>Description</b>	
EPD-09-0001 Rev B.....	E Series Boiler .....	DHW Piping Thermostatic Valve .....	3
EPA-09-0001 Rev B.....	E Series Boiler .....	Single Zone.....	4
QPD-09-0001 Rev B .....	Q175C Boiler .....	DHW Recirculation .....	5
QPD-09-0002 Rev B .....	Q Series Boiler .....	DHW from Indirect Tank .....	6
QPD-09-0003 Rev B .....	Q Series Boiler .....	Single Zone Priority DHW.....	7
QPD-09-0004 Rev B .....	Q Series Boiler.....	4 Zone Valve with DHW .....	8
QPA-09-0001 Rev C .....	Q Series Boiler.....	3 On-Off High Temperature Zones.....	9
QPA-09-0002 Rev B.....	Q Series Boiler.....	3 Way Thermostatic Mixing .....	10
QPA-09-0003 Rev B.....	Q Series Boiler.....	3 Way Motorized Mixing .....	11
QPA-09-0004 Rev B.....	Q Series Boiler.....	3 Zone Valve.....	12
QPA-09-0005 Rev C .....	Q Series Boiler.....	Direct Coupled Radiant .....	13
QPA-09-0006 Rev B.....	Q Series Boiler.....	Single Zone Split Loop .....	14
QPA-09-0007 Rev B.....	Q Series Boiler.....	Snow Melt System.....	15
QPA-09-0008 Rev B.....	Q Series Boiler.....	3 Zone Pumps .....	16
QPA-09-0009 Rev B.....	Q & E Series Boilers .....	Condensate Plumbing with and without Neutralizer .....	17
QPC-09-0001 Rev B .....	Q Series Boilers.....	2 Boiler Install .....	18
QPC-09-0002 Rev B .....	Q Series Boilers.....	3 Boiler Install .....	19
QPC-09-0003 Rev B .....	Q Series Boilers.....	2 Boilers with DHW.....	20
QEC-09-0001 Rev A .....	Q Series Boilers.....	2 Boilers with DHW Indirect Tank.....	21
QED-09-0001 Rev B .....	Q Series Boilers.....	Single Zone Circuit with Priority DHW .....	22
QED-09-0002 Rev A .....	Q Series Boilers.....	4 Zone Valves with Priority DHW .....	23
LEGEND Rev A.....	Q & E Series Boilers .....	Legend.....	24

Rinnai is continually updating and improving products; therefore, drawings and specifications are subject to change without prior notice. Local, state, provincial and federal codes must be adhered to prior to installation.



This is not an engineering drawing; it is intended only as a guide and not as a replacement for professional engineering project drawings. This drawing is not intended to describe a complete system. It is up to the contractor or engineer to determine the necessary components and configuration of the particular system to be installed. The drawing does not imply compliance with local building code requirements. It is the responsibility of the engineer or contractor to ensure that the installation is in accordance with all applicable building codes. Confer with local building officials before installation.

Rinnai America Corporation  
103 International Drive  
Peachtree City, GA 30269  
1-800-621-9419

Reference  
Fraction = 4" NPS  
X.XX=±0.030  
X.XX=±0.015  
X.XXX=±0.005

This drawing is the exclusive property of Rinnai America Corporation and shall not be reproduced or given to third parties.

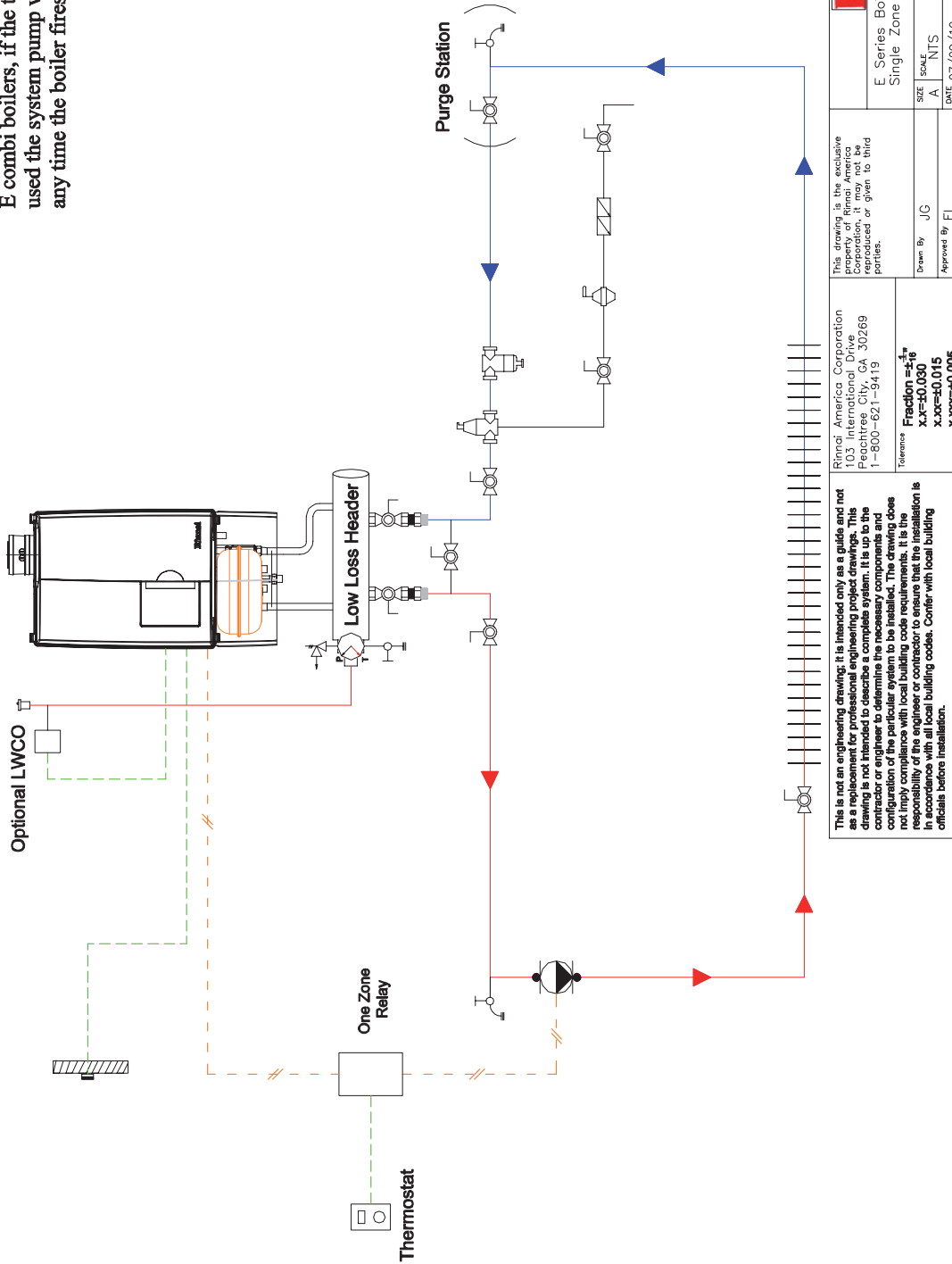
Drawn By JG  
Approved By EL

Rinnai  
E Series Boiler  
DHW Piping Thermostatic Valve

SIZE SCALE DWG NO. REV  
A NTS EPD-09-0001 B  
DATE 11/30/09 SHEET 1 of 1

**E boiler  
Single Zone**

**Note:**  
A single zone relay should be used with E combi boilers, if the relay is not used the system pump will be activated any time the boiler fires for heat or DHW



This drawing is the exclusive property of Rinnai America Corporation. It may not be reproduced or given to third parties.

Drawn By JG  
Approved By EL

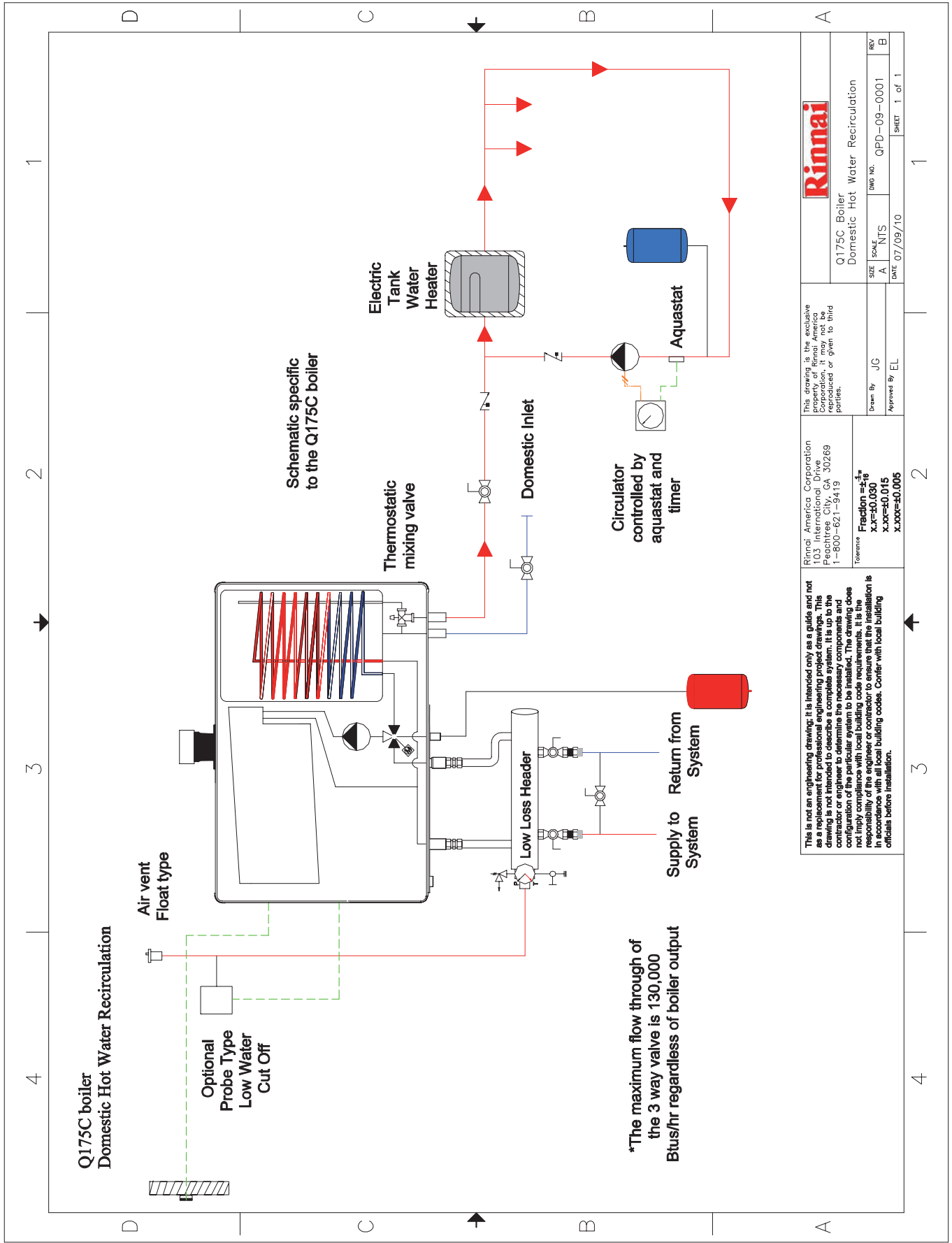
Rinnai America Corporation  
103 International Drive  
Peachtree City, GA 30289  
1-800-621-9419

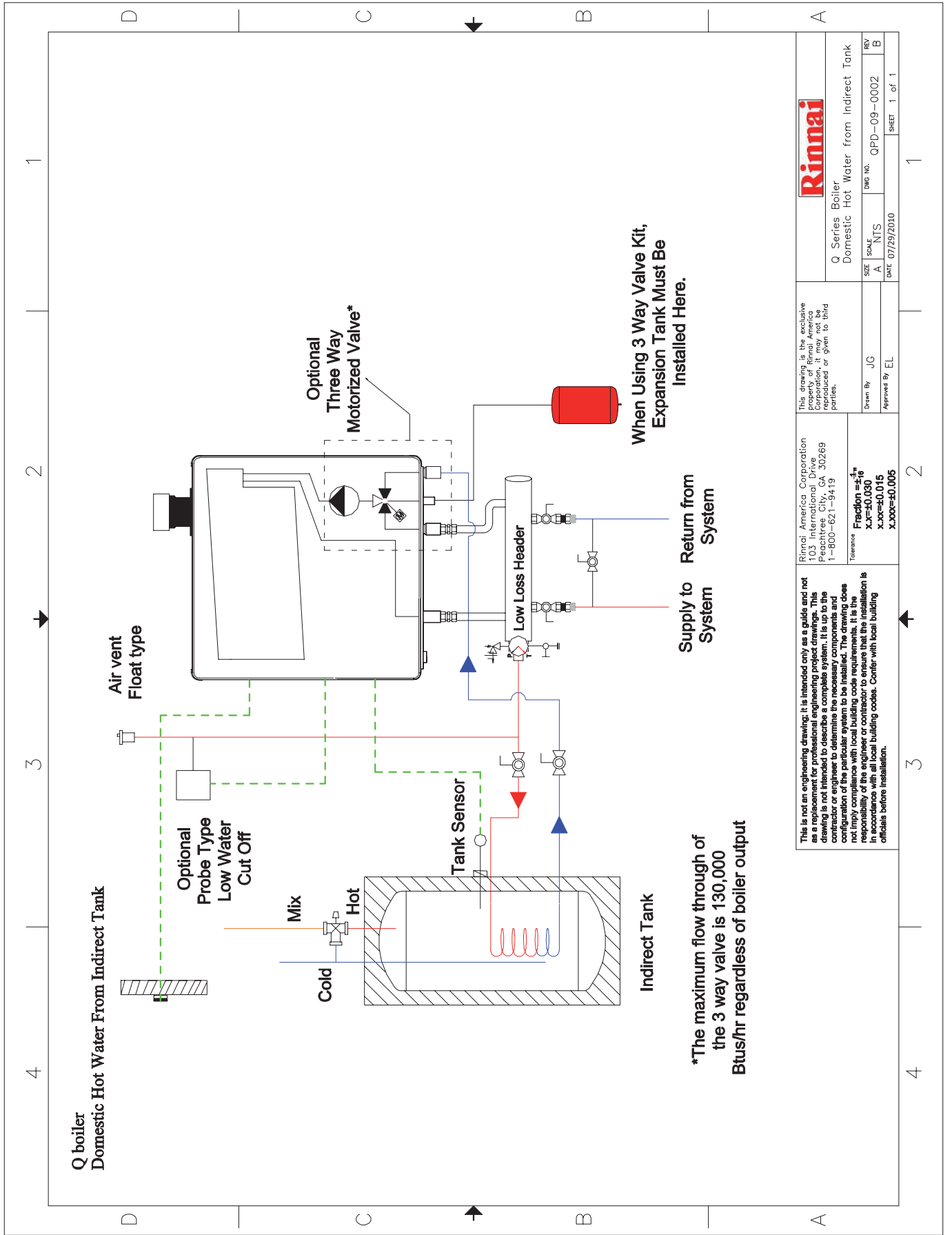
Reference  
Fraction = 1/8"  
X.X=±0.030  
X.XX=±0.015  
X.XXX=±0.005

This is not an engineering drawing; it is intended only as a guide and not as a replacement for professional engineering project drawings. This drawing is not intended to describe a complete system. It is up to the contractor or engineer to determine the necessary components and configuration of the particular system to be installed. The drawing does not imply compliance with local building code requirements. It is the responsibility of the contractor to ensure that the installation is in accordance with all local building codes. Confer with local building officials before installation.

**Rinnai**  
E Series Boiler  
Single Zone

SIZE	SCALE	DWG NO.	REV
A	NTS	EPA-09-0001	B
DATE 07/09/10			SHEET 1 of 1





Q Series Boiler	Domestic Hot Water from Indirect Tank
SIZE A	SCALE NTS
DATE 07/29/2010	DWG NO. QPD-09-0002
Drawn By JUC	REV B
Approved By EL	SHEET 1 of 1

This drawing is the exclusive property of Rinnai America Corporation. It may not be reproduced or given to third parties.

Rinnai America Corporation  
 103 Interstate 94  
 Peachtree City, GA 30269  
 1-800-621-9419

Tolerance  
 Fraction  $\frac{1}{16}$   
 XX-30.000  
 X.XXX-60.015  
 X.XXXX-60.005

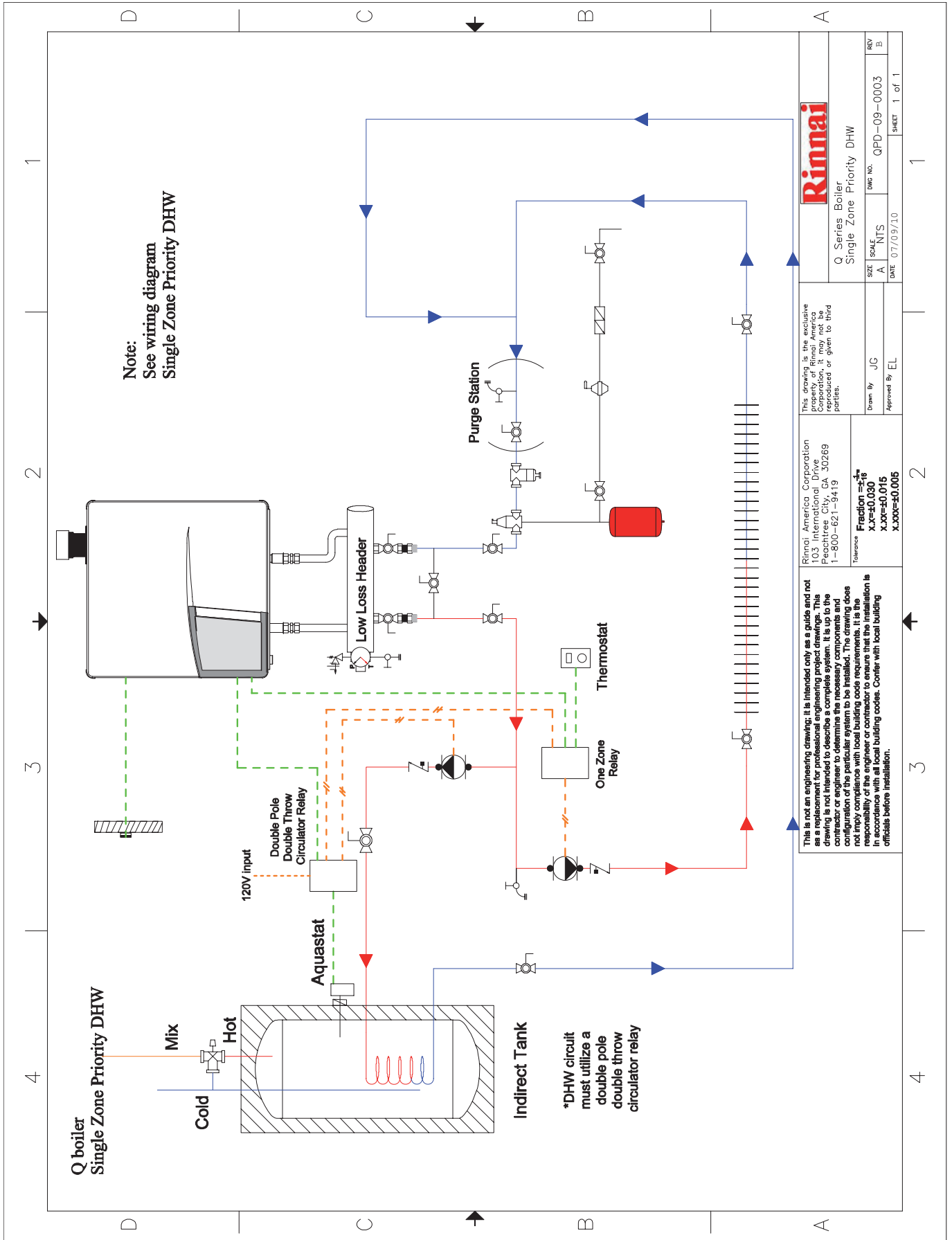
This is not an engineering drawing; it is intended only as a guide and not as a replacement for professional engineering project drawings. This drawing is not intended to describe a complete system. It is up to the contractor or engineer to determine the appropriate system configuration of the particular system to be installed. The drawing does not imply compliance with local building code requirements. It is the responsibility of the engineer or contractor to ensure that the installation is in accordance with all local building codes. Confer with local building officials before installation.

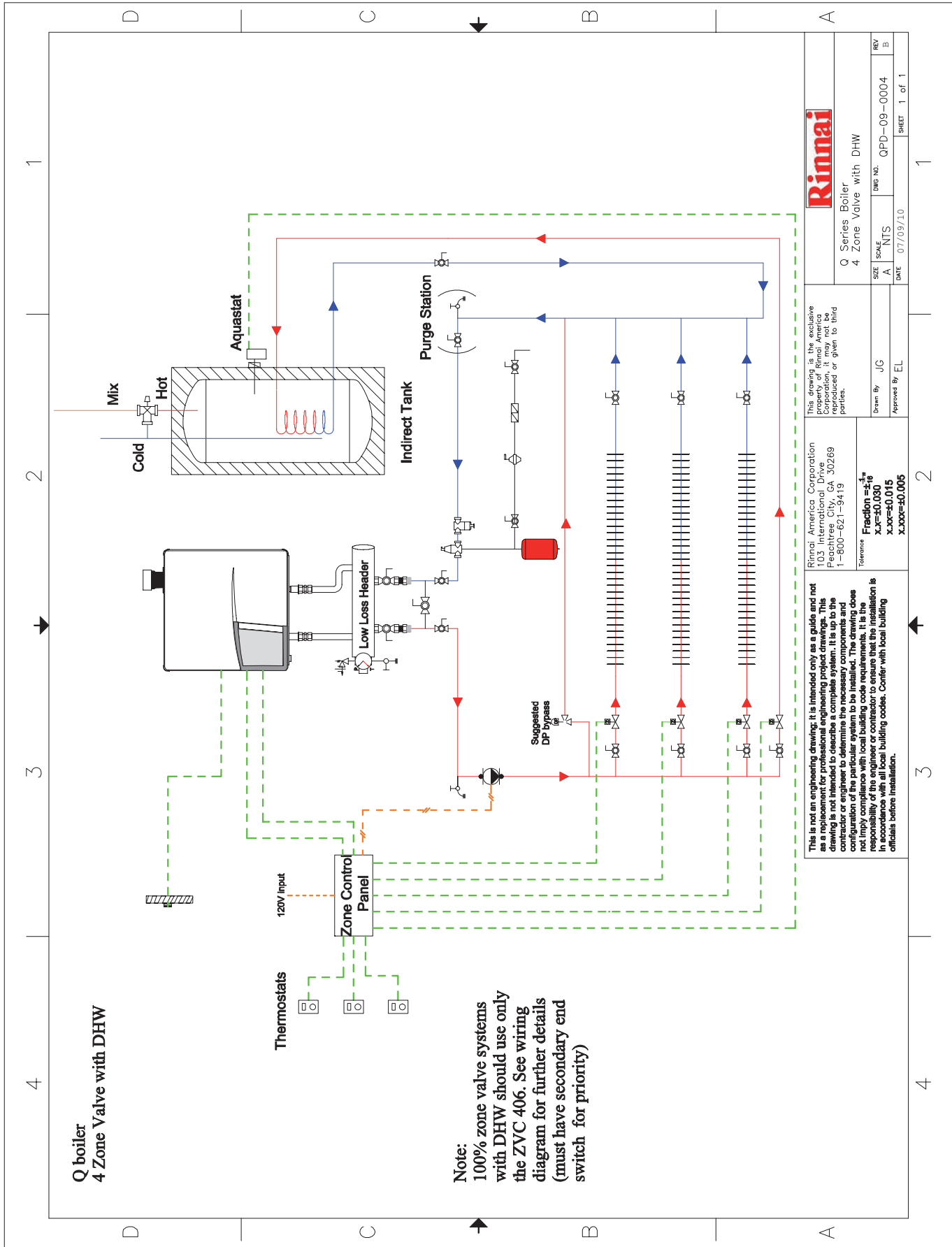
\*The maximum flow through of the 3 way valve is 130,000 Btus/hr regardless of boiler output

When Using 3 Way Valve Kit, Expansion Tank Must Be Installed Here.

Supply to System

Return from System





This is not an engineering drawing; it is intended only as a guide and not as a replacement for professional engineering project drawings. This drawing is not intended to describe a complete system. It is up to the contractor or engineer to determine the necessary components and configuration of the particular system to be installed. The drawing does not imply compliance with local building code requirements. It is the responsibility of the engineer or contractor to ensure that the installation is in accordance with all local building codes. Confer with local building officials before installation.

**Rinnai**  
Rinnai, America Corporation  
103 International Drive  
Peachtree City, GA 30269  
1-800-621-9419

Q Series Boiler  
4 Zone Valve with DHW

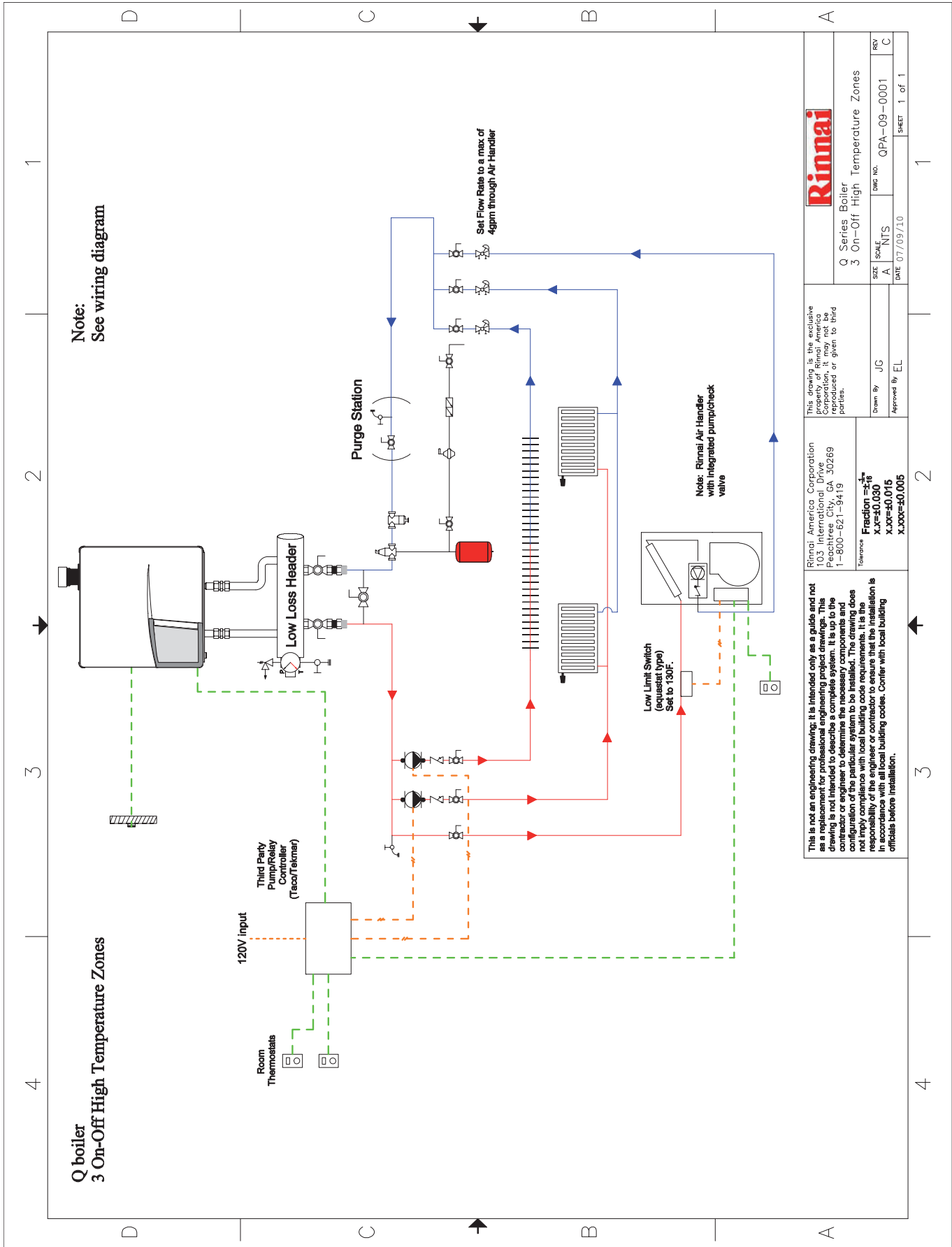
Drawn By: J.C.  
Approved By: EL

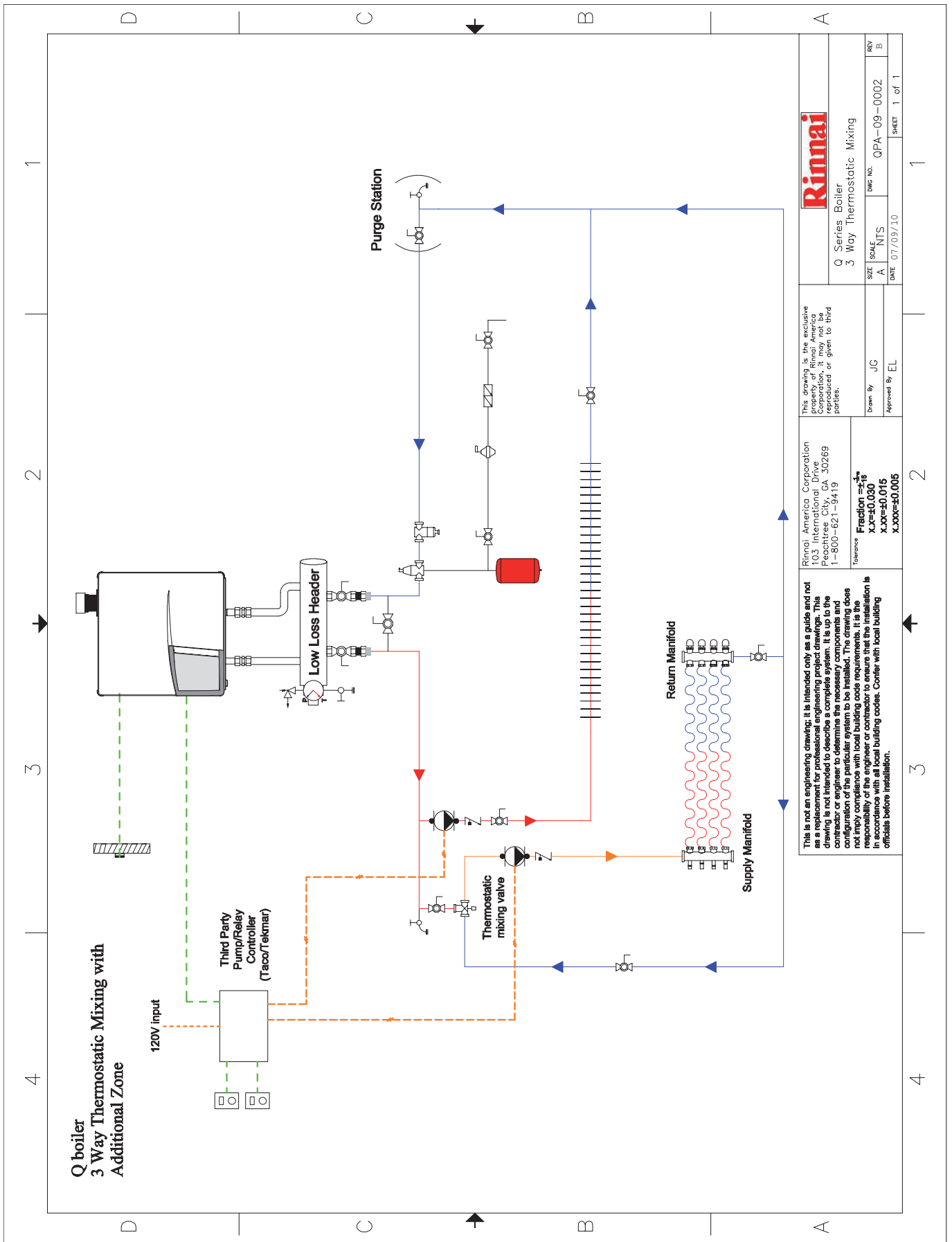
SIZE: A  
SCALE: NTS  
DATE: 07/09/10

REV: B  
DWG NO: QPD-09-0004  
SHEET: 1 of 1

Tolerance:  
Fraction = 1/16  
X.YZ = ±0.030  
X.XXX = ±0.015  
X.XXXX = ±0.005







Q Series Boiler	QPA-09-0002
3 Way Thermostatic Mixing	REV B
SIZE A	SCALE NTS
DATE 07/09/10	DWG NO. QPA-09-0002
Drawn By JG	REV B
Approved By EL	DATE 07/09/10
SHEET 1 of 1	

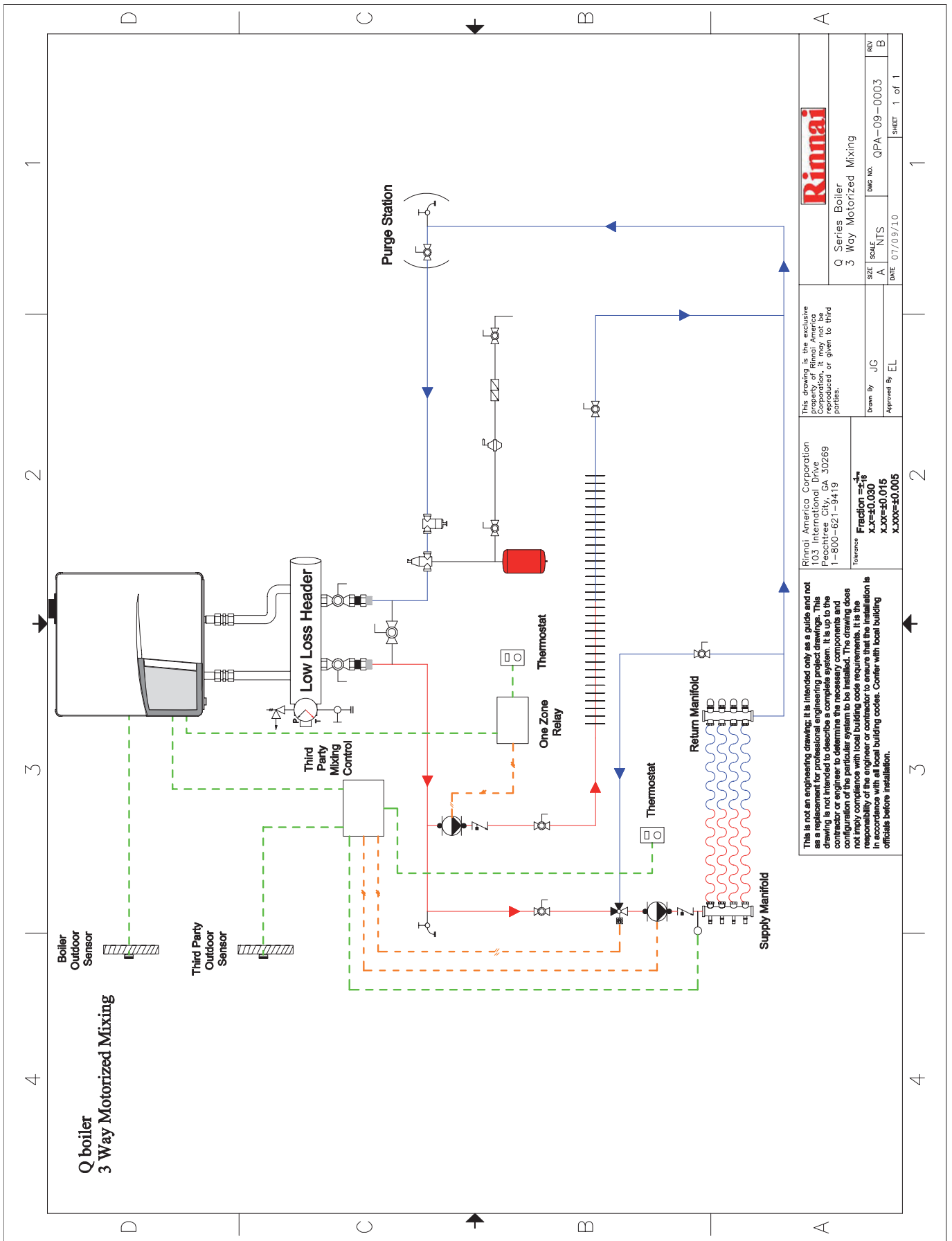
This drawing is the exclusive property of Rinnai America Corporation; it may not be reproduced or given to third parties.

Rinnai America Corporation  
103 Intercity Drive  
Peachtree City, GA 30269  
1-800-621-9419

Tolerance  
Fraction  $\frac{1}{16}$   
XXX=±0.015  
XXXX=±0.005

Drawn By JG  
Approved By EL

This is not an engineering drawing; it is intended only as a guide and not as a replacement for professional engineering project design. This document is for informational purposes only. It is the responsibility of the contractor or engineer to determine the necessary components and configuration of the particular system to be installed. The drawing does not imply compliance with local building code requirements. It is the responsibility of the engineer or contractor to ensure that the installation is in accordance with all local building codes. Confer with local building officials before installation.



		Q Series Boiler	
		3 Way Motorized Mixing	
SIZE	SCALE	QWS NO.	REV
A	NTS	QPA-09-0003	B
DATE		SHEET	
07/09/10		1 of 1	

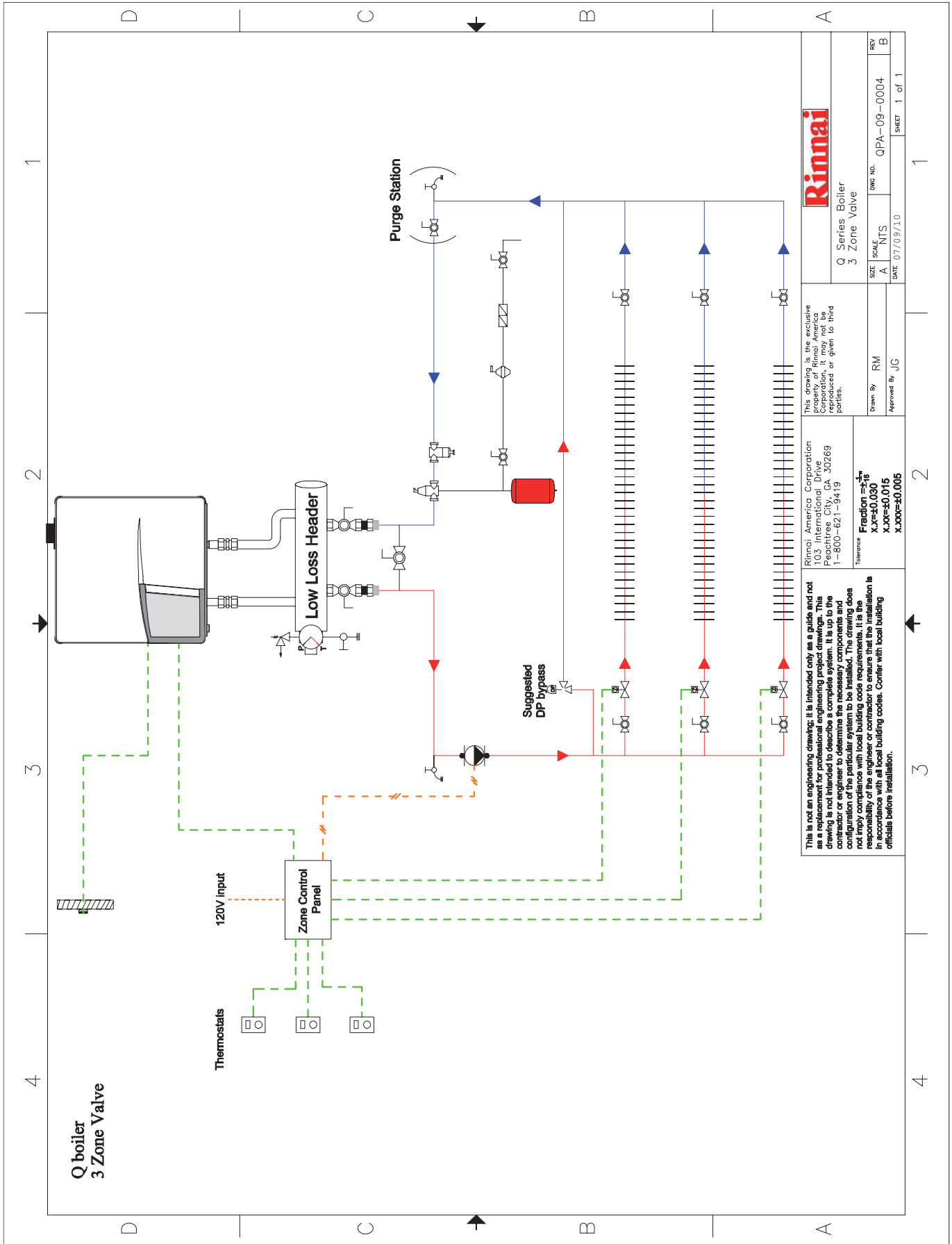
This drawing is the exclusive property of Rinnai America Corporation; it may not be reproduced or given to third parties.

Drawn By: JG  
Approved By: EL

Rinnai America Corporation  
103 Intercity Drive  
Peachtree City, GA 30269  
1-800-621-9419

Tolerance: Fraction  $\frac{1}{16}$   
XXX-0.030  
XXX-0.015  
XXX-0.005

This is not an engineering drawing; it is intended only as a guide and not as a replacement for professional engineering project drawings. This drawing is for informational purposes only. It is the responsibility of the contractor or engineer to determine the necessary components and configuration of the particular system to be installed. The drawing does not imply compliance with local building code requirements. It is the responsibility of the engineer or contractor to ensure that the installation is in accordance with all local building codes. Confer with local officials before installation.



<b>Rimai</b>	
Q Series Boiler 3 Zone Valve	
SIZE	A
SCALE	NTS
DATE	07/09/10
DWG NO.	QPA-09-0004
REV	B

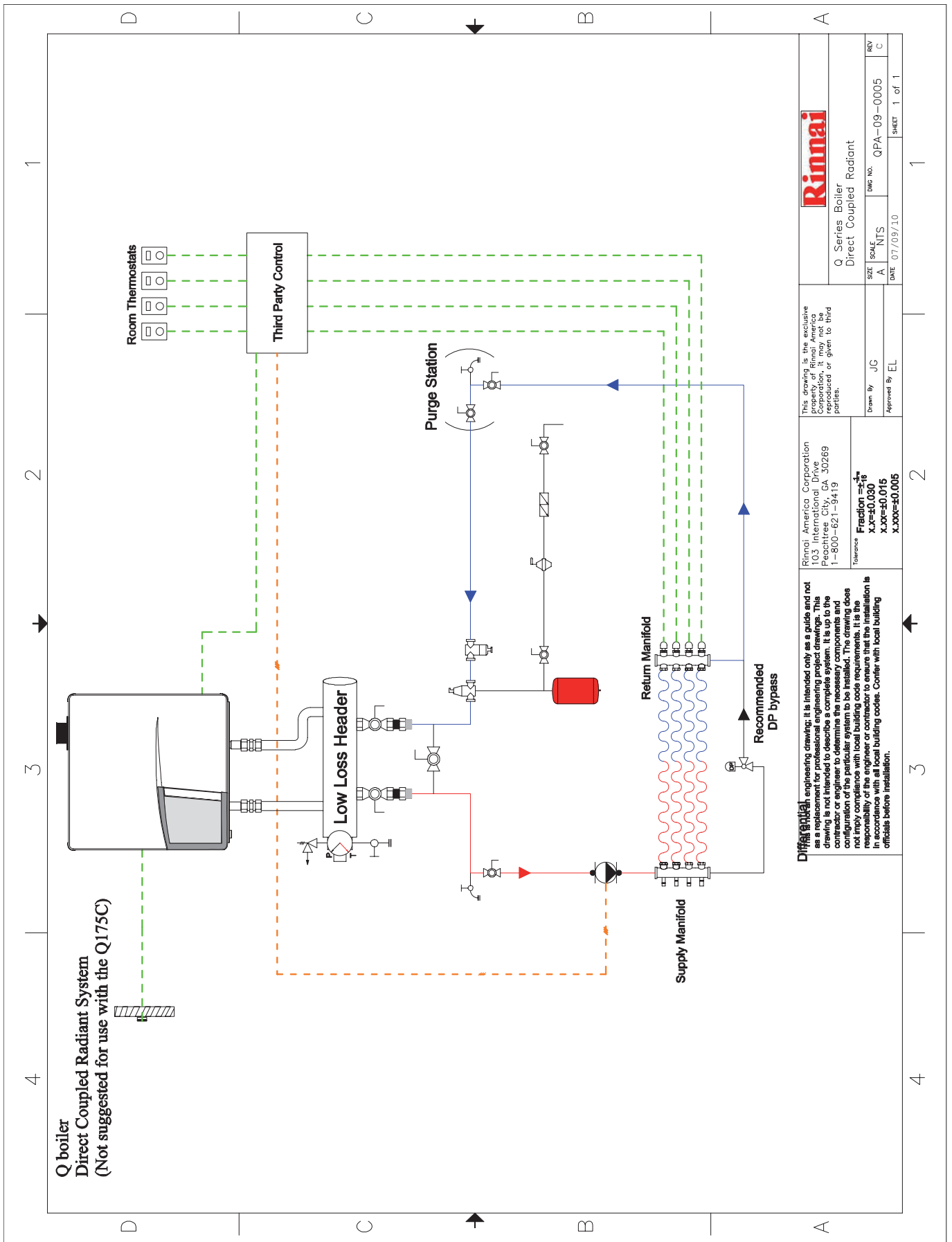
This drawing is the exclusive property of Rimai America Corporation; it may not be reproduced or given to third parties.

Drawn By: RM  
Approved By: JC

Rimai America Corporation  
103 Interstate Dr  
Peachtree City, GA 30269  
1-800-621-9419

Tolerance:  $\pm 0.16$   
X.XX=±0.015  
X.XXX=±0.005

This is not an engineering drawing; it is intended only as a guide and not as a replacement for professional engineering project design. This drawing is the property of Rimai America Corporation. It is to be used by the contractor or engineer to determine the necessary components and configuration of the particular system to be installed. The drawing does not imply compliance with local building code requirements. It is the responsibility of the engineer or contractor to ensure that the installation is in accordance with all local building codes. Confer with local building officials before installation.



**Rimac**

This drawing is the exclusive property of Rimac America Corporation; it may not be reproduced or given to third parties.

Rimac America Corporation  
103 Interstate Dr.  
Peachtree City, GA 30269  
1-800-621-9419

Drawn By: JG  
Approved By: EL

Q Series Boiler  
Direct Coupled Radiant

DATE: 07/09/10

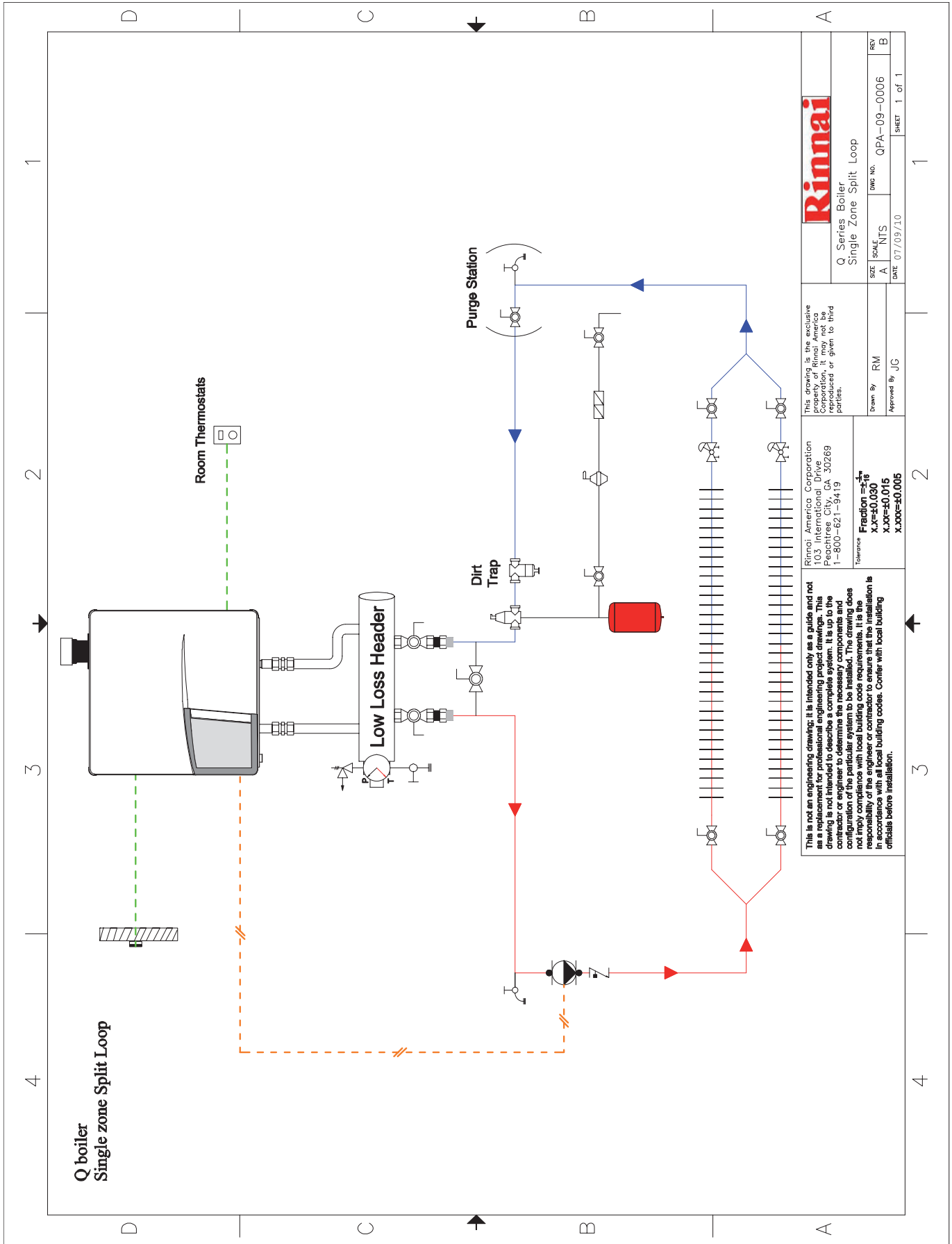
SIZE: A  
SCALE: NTS  
DATE: 07/09/10

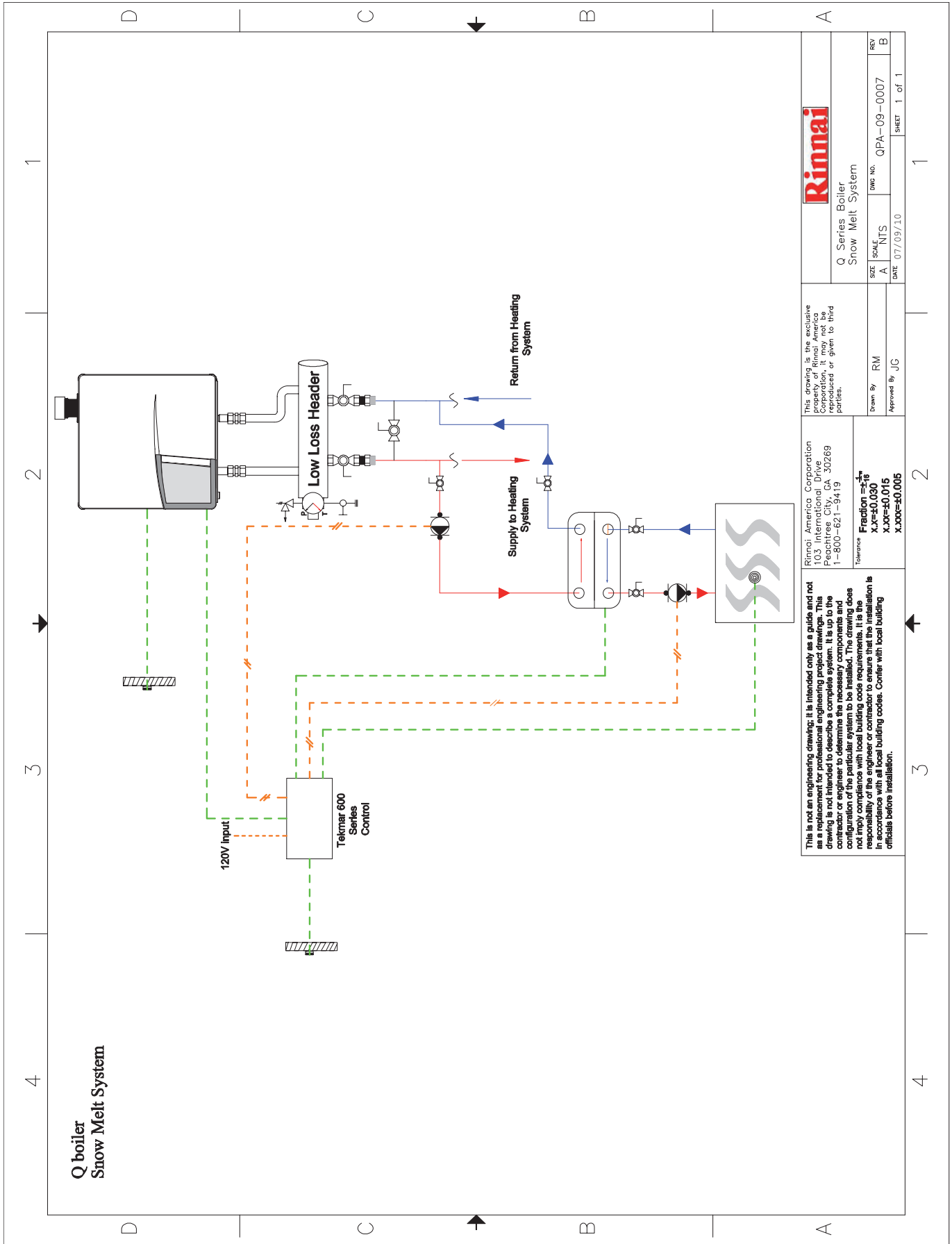
OWN NO.: QPA-09-0005  
REV: C

1 of 1

**Differs from** engineering drawing; it is intended only as a guide and not as a replacement for professional engineering project drawings. This drawing is for informational purposes only. It is to be used by the contractor or engineer to determine the necessary components and configuration of the particular system to be installed. The drawing does not imply compliance with local building code requirements. It is the responsibility of the engineer or contractor to ensure that the installation is in accordance with all local building codes. Confer with local building officials before installation.

Fraction:  $\frac{1}{16}$   
X.XX=±0.030  
X.XXX=±0.015  
X.XXXX=±0.005





		Q Series Boiler	
		Snow Melt System	
SIZE	A	SCALE	NTS
DATE	07/09/10	DWG NO.	QPA-09-0007
		Drawn By	RM
		Approved By	JC

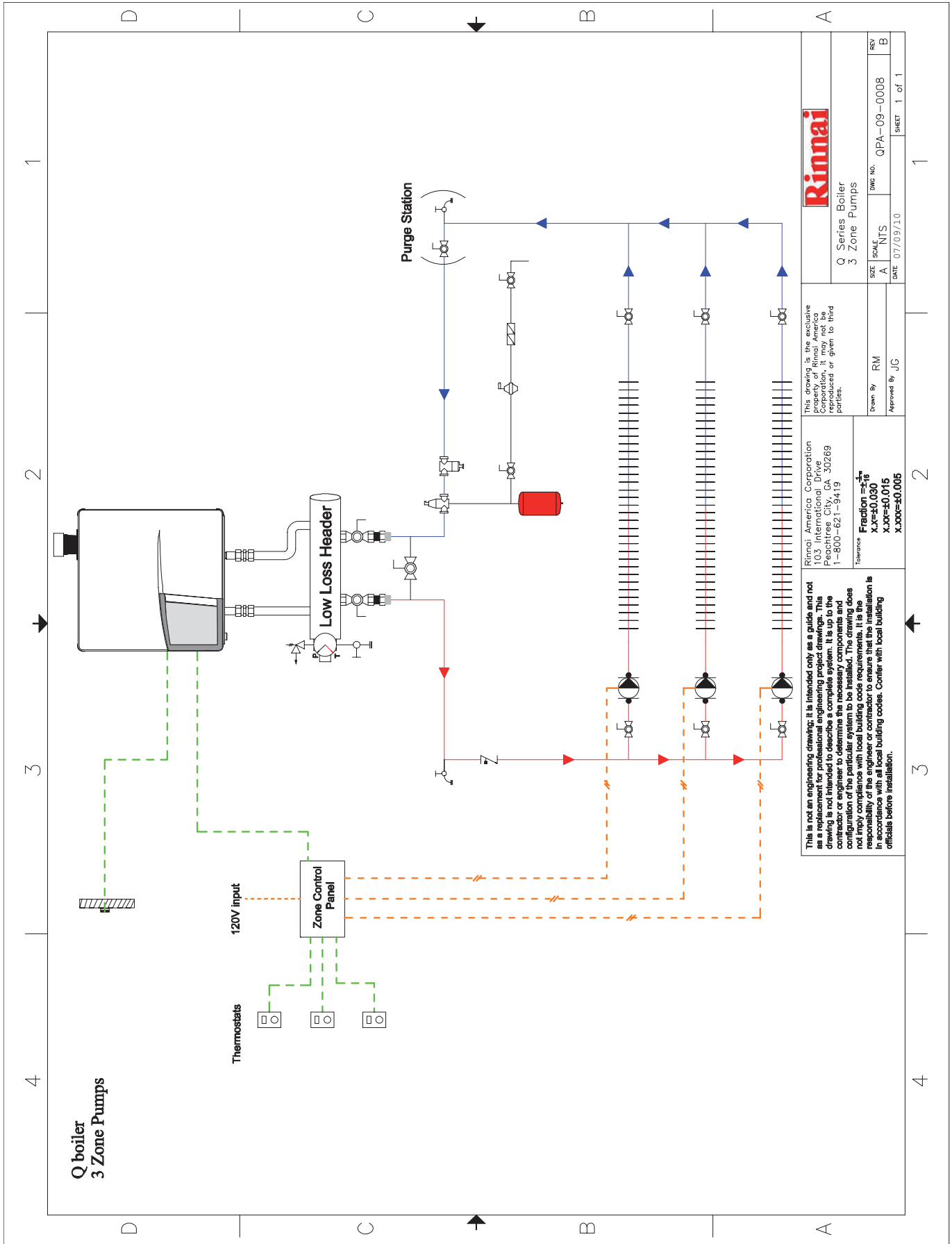
This drawing is the exclusive property of Rinnai America Corporation; it may not be reproduced or given to third parties.

Rinnai America Corporation  
 103 Interstate Dr  
 Peachtree City, GA 30269  
 1-800-621-9419

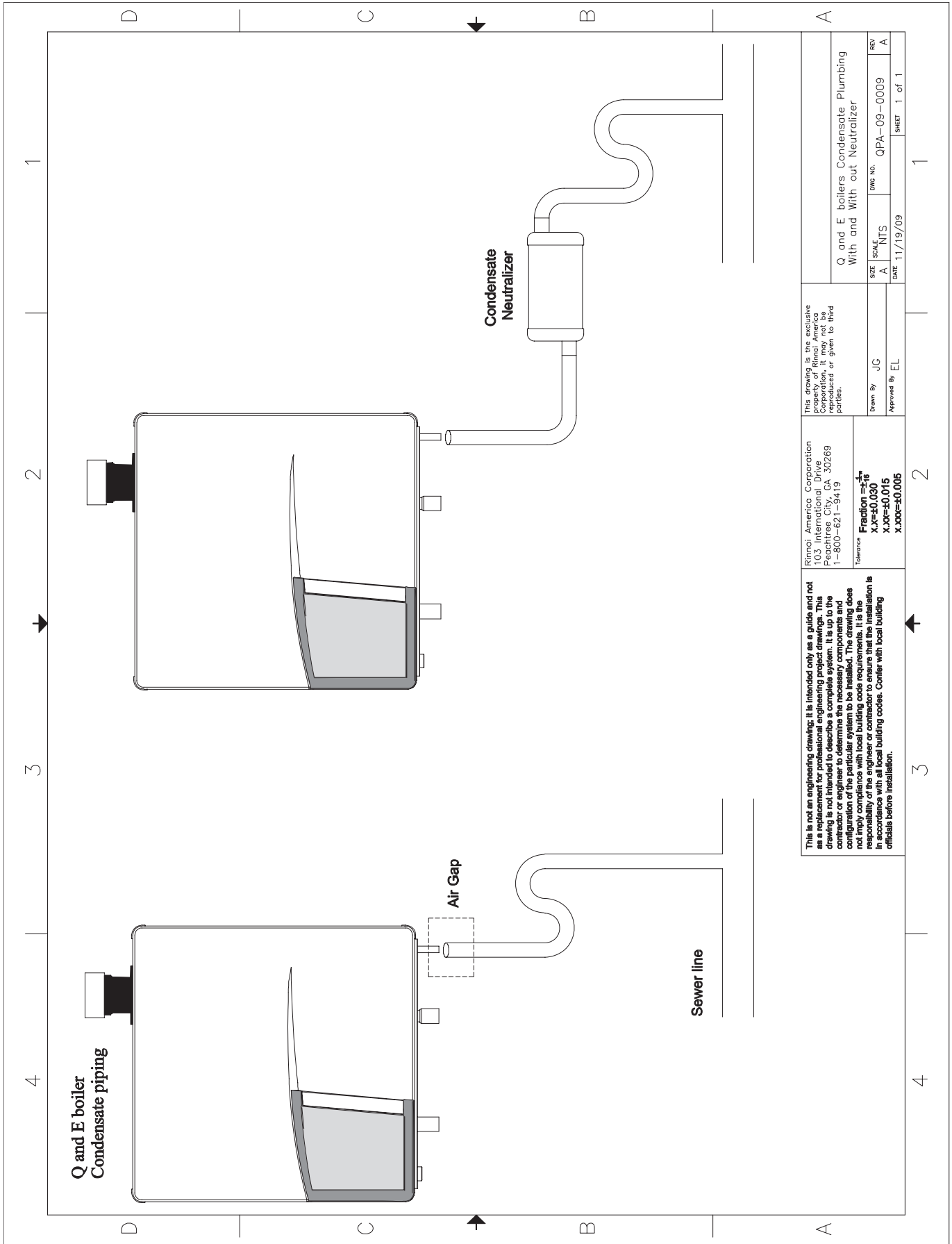
Tolerance  
 Fraction  $\frac{1}{16}$   
 XX-±0.030  
 XXX-±0.015  
 XXXX-±0.005

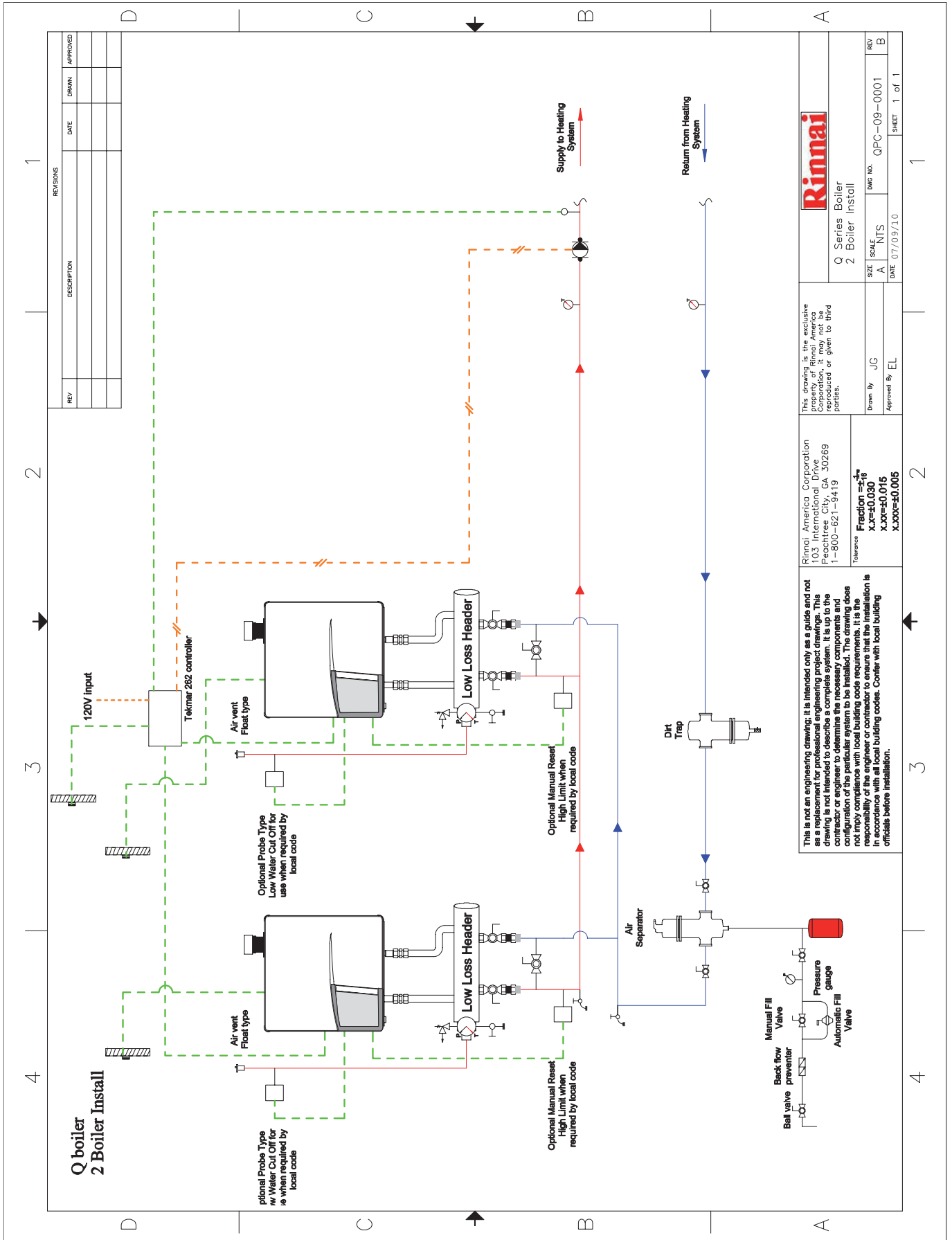
This is not an engineering drawing; it is intended only as a guide and not as a replacement for professional engineering project design. This document is for informational purposes only. It is not intended to be used by a contractor or engineer to determine the necessary components and configuration of the particular system to be installed. The drawing does not imply compliance with local building code requirements. It is the responsibility of the engineer or contractor to ensure that the installation is in accordance with all local building codes. Confer with local building officials before installation.

REV	B
SHEET 1 of 1	









REVISIONS			
REV	DESCRIPTION	DATE	APPROVED

This is not an engineering drawing; it is intended only as a guide and not as a replacement for professional engineering project design. This drawing is the property of Rinnai America Corporation. It may not be reproduced or given to third parties.

Rinnai America Corporation  
103 Interstate Dr  
Peachtree City, GA 30269  
1-800-621-9419

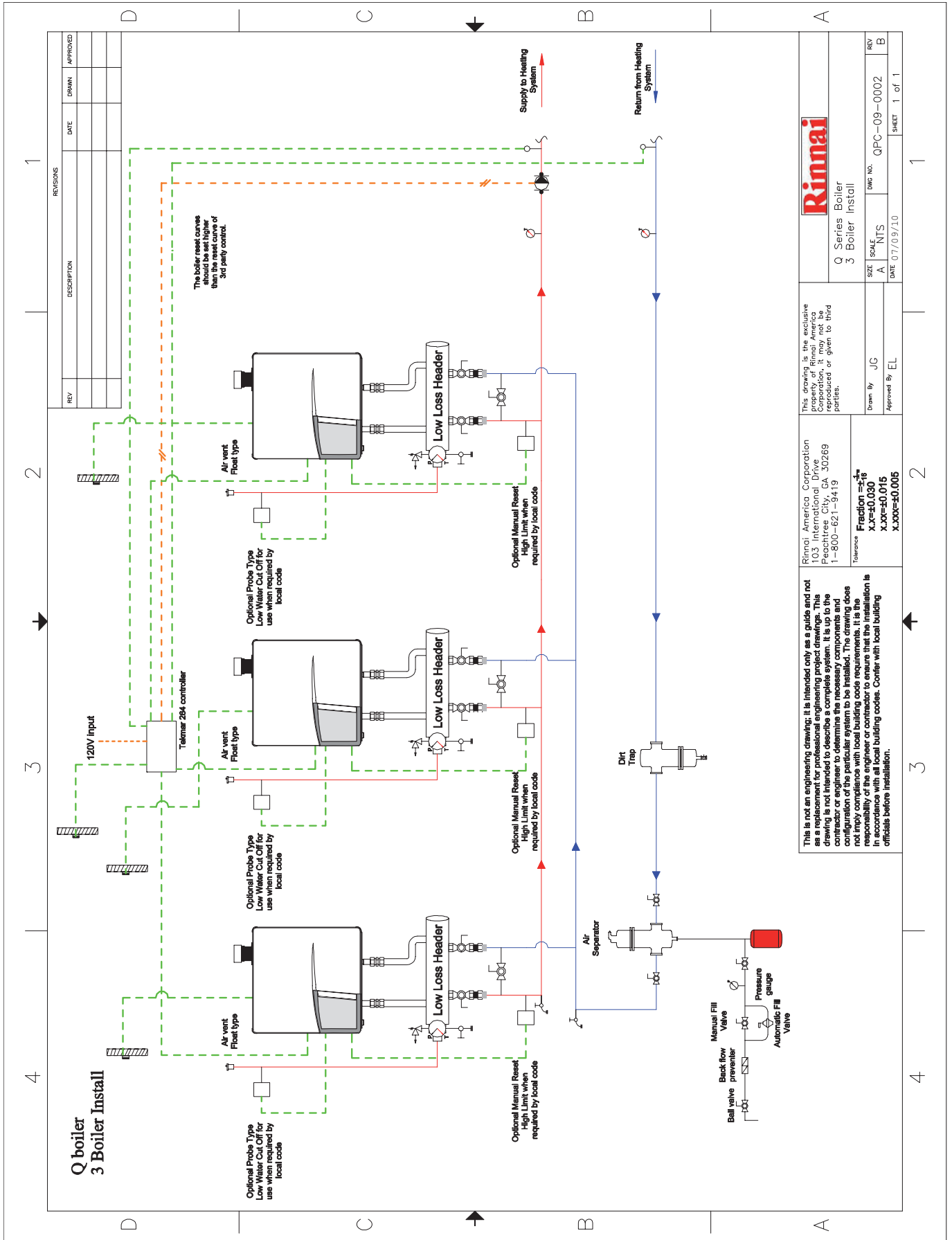
Tolerance: Fraction  $\frac{1}{16}$   
XXX-0.030  
XXX-0.015  
XXX-0.005

Drawn By: JG  
Approved By: EL

This drawing is the exclusive property of Rinnai America Corporation. It may not be reproduced or given to third parties.

Q Series Boiler  
2 Boiler Install

SIZE: A  
SCALE: NTS  
DATE: 07/09/10  
DWS NO.: QPC-09-0001  
REV: B



REV	DESCRIPTION	DATE	DRAWN	APPROVED

<b>Rinnai</b>	
Q Series Boiler	REV
3 Boiler Install	B
SIZE A	SCALE NTS
DATE 07/09/10	DWG NO. QPC-09-0002
	SHEET 1 of 1

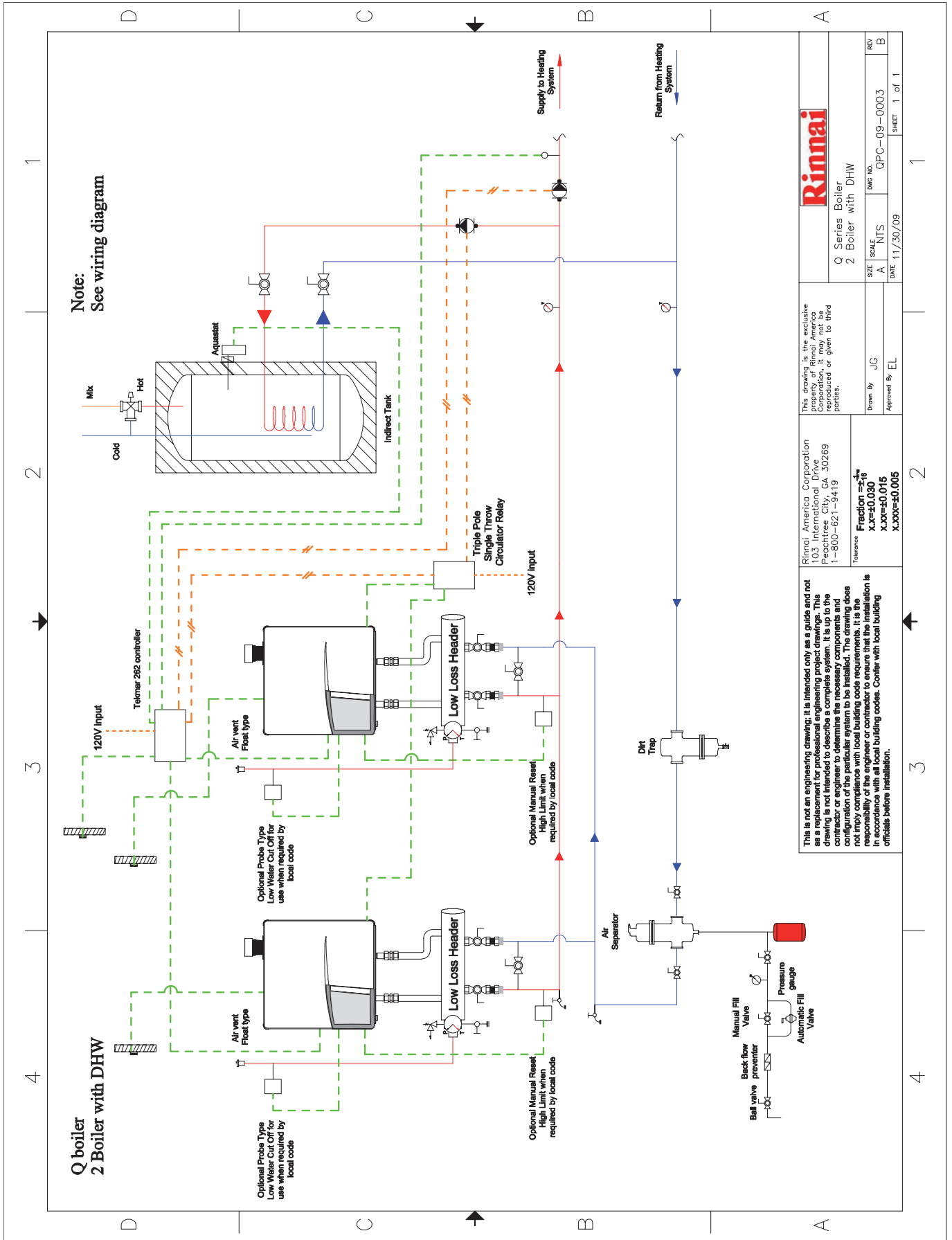
This drawing is the exclusive property of Rinnai America Corporation; it may not be reproduced or given to third parties.

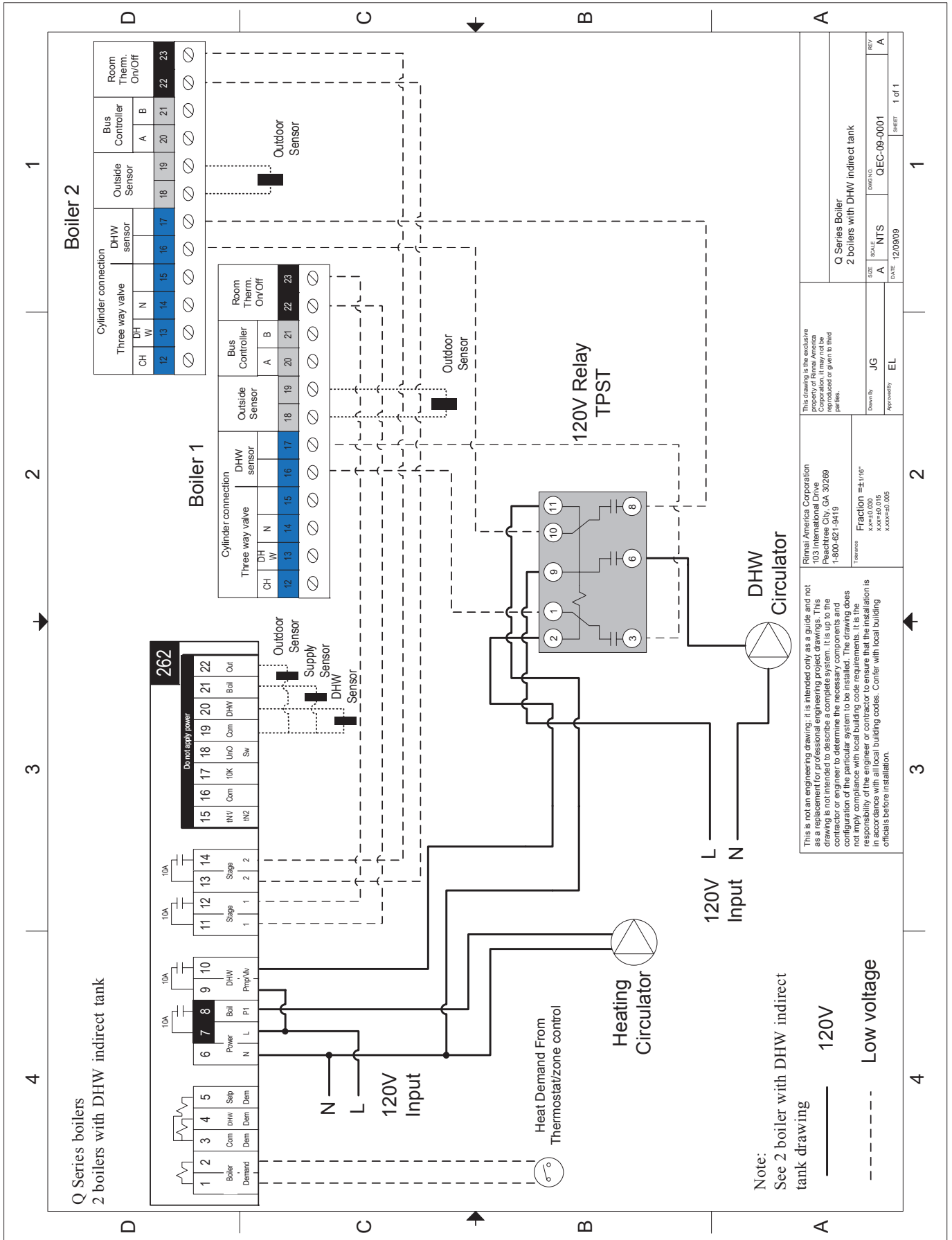
Drawn By JG  
Approved By EL

Rinnai America Corporation  
103 Interstate Dr  
Peachtree City, GA 30269  
1-800-621-9419

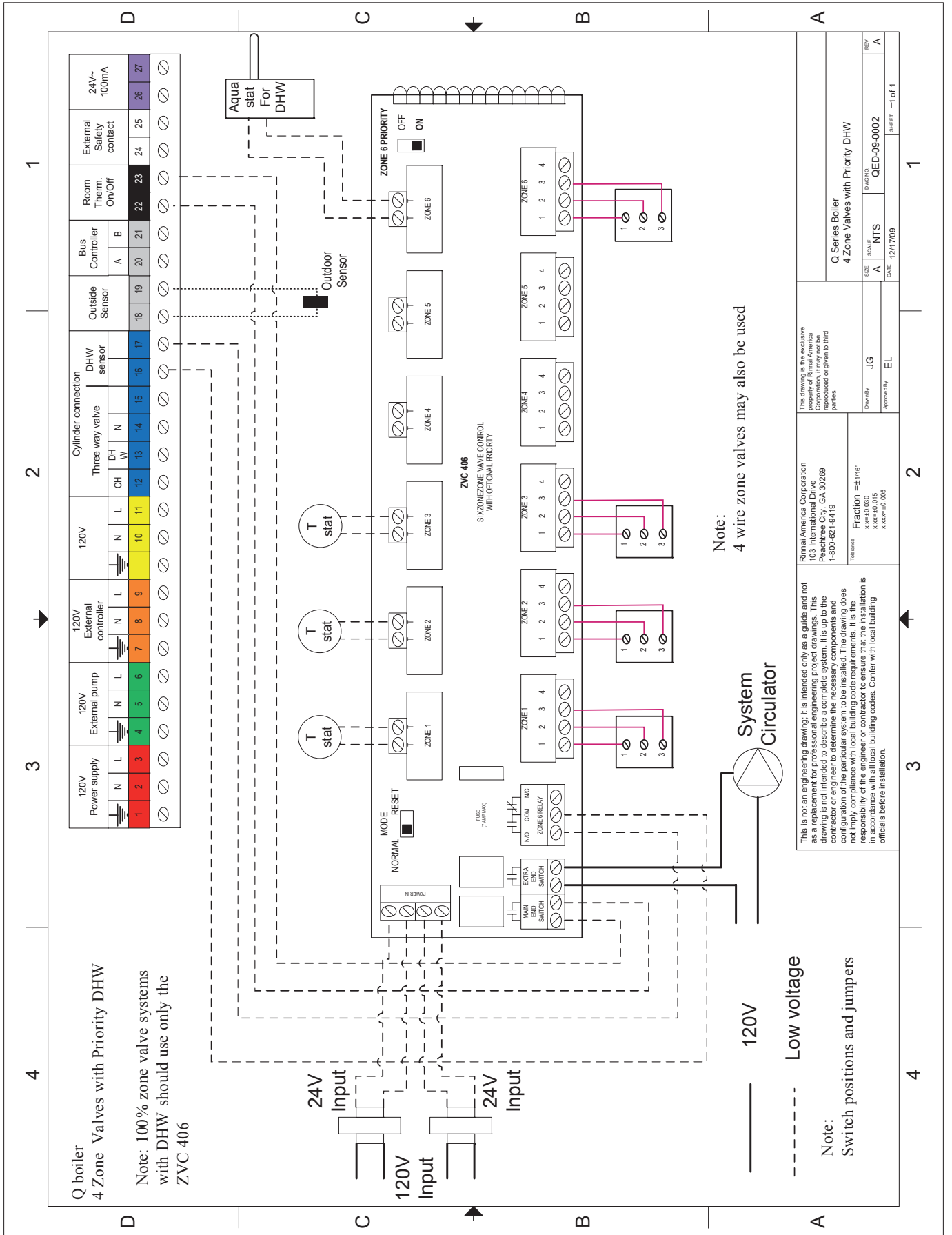
Tolerance  
Fraction  $\frac{1}{16}$   
XXX=0.000  
XXX=0.015  
XXX=0.005

This is not an engineering drawing; it is intended only as a guide and not as a replacement for professional engineering project drawings. This drawing is the property of Rinnai America Corporation. It is to be used by the contractor or engineer to determine the necessary components and configuration of the particular system to be installed. The drawing does not imply compliance with local building code requirements. It is the responsibility of the engineer or contractor to ensure that the installation is in accordance with all local building codes. Confer with local building officials before installation.







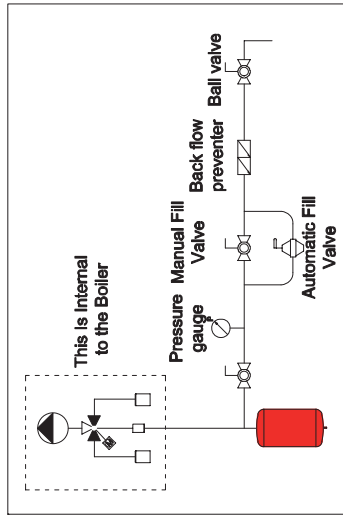


This drawing is the exclusive property of Rinnai America Corporation. It may not be reproduced or given to third parties.	
Rinnai America Corporation 103 Industrial Blvd. Peachtree City, GA 30269 1-800-621-6419	Density: JG Approval: EL
This is not an engineering drawing; it is intended only as a guide and not as a replacement for professional engineering project drawings. This drawing is the property of Rinnai America Corporation. It may not be reproduced or given to third parties. The contractor or engineer to determine the necessary components and configuration of the particular system to be installed. The drawing does not imply compliance with local building code requirements. It is the responsibility of the engineer or contractor to ensure that the installation is in accordance with all local building codes. Confer with local building officials before installation.	Fraction = 1/16" X.XXX ± 0.015 X.XXXX ± 0.005
Q Series Boiler 4 Zone Valves with Priority DHW	DATE: 12/17/09 SHEET: 1 of 1

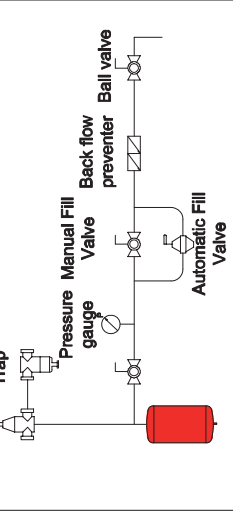
4 3 2 1

# Rinnai Boilers Legend

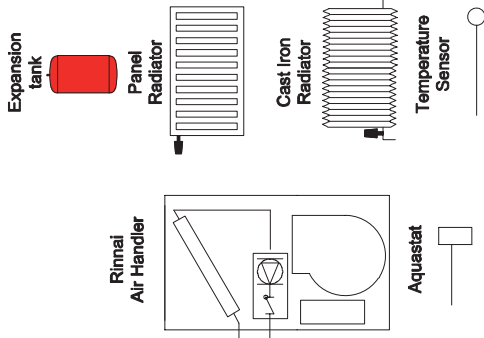
The following picture illustrates a suggested arrangement. Some of the fittings are optional.



The following picture illustrates a suggested arrangement. Some of the fittings are optional.



Baseboard Convectors



This is not an engineering drawing; it is intended only as a guide and not as a replacement for professional engineering project drawings. This drawing is for informational purposes only. It is the responsibility of the contractor or engineer to determine the necessary components and configuration of the particular system to be installed. The drawing does not imply compliance with local building code requirements. It is the responsibility of the engineer or contractor to ensure that the installation is in accordance with all local building codes. Confer with local building officials before installation.

Rinnai America Corporation  
103 International Drive  
Peachtree City, GA 30269  
1-800-621-9419  
Tolerance: Fraction 1/16  
X.XX=0.030  
X.XXX=0.015  
X.XXXX=0.005

This drawing is the exclusive property of Rinnai America Corporation; it may not be reproduced or given to third parties.  
Drawn By: JG  
Approved By: EL  
Rinnai Boilers Legend  
SIZE: A  
SCALE: NTS  
DATE: 11/19/09  
DWS NO.:  
LEGEND  
REV: A  
SHEET: 1 of 1



# Notes

# Notes

# Notes

# Ask about **Rinnai**<sup>®</sup>

Rinnai's other fine products

EXPERIENCE OUR INNOVATION™



## Tankless Water Heaters

- Residential and Commercial Applications
- Continuous Hot Water
- ENERGY STAR<sup>®</sup> qualified models
- Up to 9.8 GPM
- Internal or External Installation
- Digital Temperature Control



## Direct Vent Furnaces

- High Efficiency
- Cool-to-the-touch Cabinet
- Vent Terminal A Included
- Blower Included



## Direct-Vent Fireplace, RHFE-750ETRA

- Up to 83% AFUE Energy Efficiency
- Zero-Clearance Installation
- Available in Four Options of Fronts
- Remotes and Fan Included
- Gas Conversion Kit Available



## Hydronic Air Handler

- Designed for Use with Rinnai Systems
- Domestic Hot Water Priority
- Optional Programmable Thermostat
- Zero Clearance to Combustibles
- Accommodates Standard Cased-Coils



## Boilers

- Residential and Commercial Applications
- ENERGY STAR<sup>®</sup> qualified models
- Up to 96.5% AFUE efficiency
- Compact wall mounted design
- ASME accredited models



## Condensing Tankless Water Heaters

- Residential and Commercial Applications
- ENERGY STAR<sup>®</sup> qualified models
- Up to 95% thermal efficiency
- Internal or External Installation
- Pair up with the Rinnai Air Handler for efficient home heating



## Rinnai Impression - Outdoor Fireplace

- Options include one-sided open, two-sided open, and freestanding.
- No electrical requirements
- Propane or convertible to natural gas with conversion kit provided
- Modular construction offers design flexibility

Register your product at  
[www.rinnairegistration.com](http://www.rinnairegistration.com)  
or call 1-866-RINNAI1 (746-6241)

For information on Rinnai's products contact  
Rinnai America Corporation  
103 International Drive  
Peachtree City, GA 30269  
TOLL FREE: 1-800-621-9419  
FAX: 678-829-1666  
[www.rinnai.us](http://www.rinnai.us)

Boiler Applications Manual  
800000026 Rev B  
8/2010

## Free Manuals Download Website

<http://myh66.com>

<http://usermanuals.us>

<http://www.somanuals.com>

<http://www.4manuals.cc>

<http://www.manual-lib.com>

<http://www.404manual.com>

<http://www.luxmanual.com>

<http://aubethermostatmanual.com>

Golf course search by state

<http://golfingnear.com>

Email search by domain

<http://emailbydomain.com>

Auto manuals search

<http://auto.somanuals.com>

TV manuals search

<http://tv.somanuals.com>