

another innovation from

Riō®

www.rioaudio.com



Riō® Cali

User's Guide

- [Table of Contents](#)
- [Getting Started](#)
- [Connections](#)
- [Software Setup](#)
- [Basic Operations](#)
- [Advanced Features](#)
- [Help](#)
- [Index](#)

Package Contents

- Earphones
- Installation CD
- Mini USB Cable
- Quick Start Poster
- Rio Cali
- Rio Cali Holster



Copyright/Trademarks

© 2003 Digital Networks North America, Inc. All rights reserved. Digital Networks North America, Inc. shall not be liable for any errors contained herein or for any damages arising out of or related to this document or the information contained herein, even if Digital Networks North America has been advised of the possibility of such damages. This document is intended for informational and instructional purposes only. Digital Networks North America, Inc. reserves the right to make changes in the specifications and other information contained in this document without prior notification. Digital Networks North America, Inc. disclaims any obligation to update the information contained herein. Rio® is a registered trademark of Digital Networks North America, Inc.

RealOne is a registered trademark of RealNetworks, Inc.

This product is iTunes ready. iTunes is provided by Apple Computer, Inc. Copyright © 2001 Apple Computer, Inc. All rights reserved. iTunes is a trademark of Apple Computer, Inc. Mac and the Mac logo are trademarks of Apple Computer, Inc. registered in the United States and other countries.

Microsoft, Windows Media and the Windows Logo are trademarks or registered trademarks of Microsoft Corporation in the United States and/or other countries.

All other product names may be trademarks of the companies with which they are associated.

P/N 41000865-001

Riō



Table of Contents

1 - Getting Started

- Welcome** 1
- Learning More 1
- Tour of the Rio Cali** 2
- LCD Overview** 5
- Playback Mode 5
- Menu Mode 5
- Date View 6
- Time Code View 6
- Track Format View 6
- Play Screens 6
- FM Radio 7
- Store Preset 7
- FM Radio 7
- Manual 7
- FM Radio 7
- Preset 7

2 - Connections

- Basic Connections** 8
- Battery 8
- Earphones 8
- USB 8
- Additional Accessories 9

3 - Software Setup

- Windows** 11
- Rio Music Manager 12
- RealOne Player 13
- Mac** 14
- iTunes 15

4 - Basic Operations

- Basic Operations** 16
- Copy** 17
- Copying Tracks with Rio Music Manager 17
- Transfer** 18
- Rio Music Manager 18
- RealOne Player 19
- iTunes 20
- Control** 21
- Play** 22
- Play Music** 23
- Play All 24
- Play Track 24
- Playlists 24
- Tuner** 25
- FM Control 25
- Manual 26
- Store Preset 26

- Preset26
- 5 - Advanced Features**
- Advanced Features**.....27
- Stopwatch**.....28
- Settings**.....29
- Playback**30
- Equalizer**.....31
- Custom.....31
- Normal.....31
- Rock.....32
- Jazz.....32
- Classical.....33
- Pop.....33
- Trance.....34
- Bookmarks**35
- Power**36
- Resume**.....37
- Display**38
- Time**39
- Language**.....40
- Tuner**41
- Lock Setup**.....42
- About**.....43
- 6 - Help**
- Troubleshooting**.....44
- Customer Service Information44

- Frequently Asked Questions45
- Glossary of Digital Audio Terms**...48
- Bass48
- Bitrate48
- Codec.....48
- Firmware48
- Gain48
- ID3 Tag.....49
- MP349
- Rip and Encode49
- Synchronize49
- Treble.....49
- VBR.....49
- WMA.....49
- Limited Warranty and Software License**.....50
- Warranty50
- Warranty Service.....50
- Scope of and Limitation on Warranty51
- FCC and Industry Canada Compliance**.....52
- Federal Communications Commission52
- Industry Canada.....52
- Safety**53
- Warning.....53
- CAUTION53

Chapter 1

Getting Started

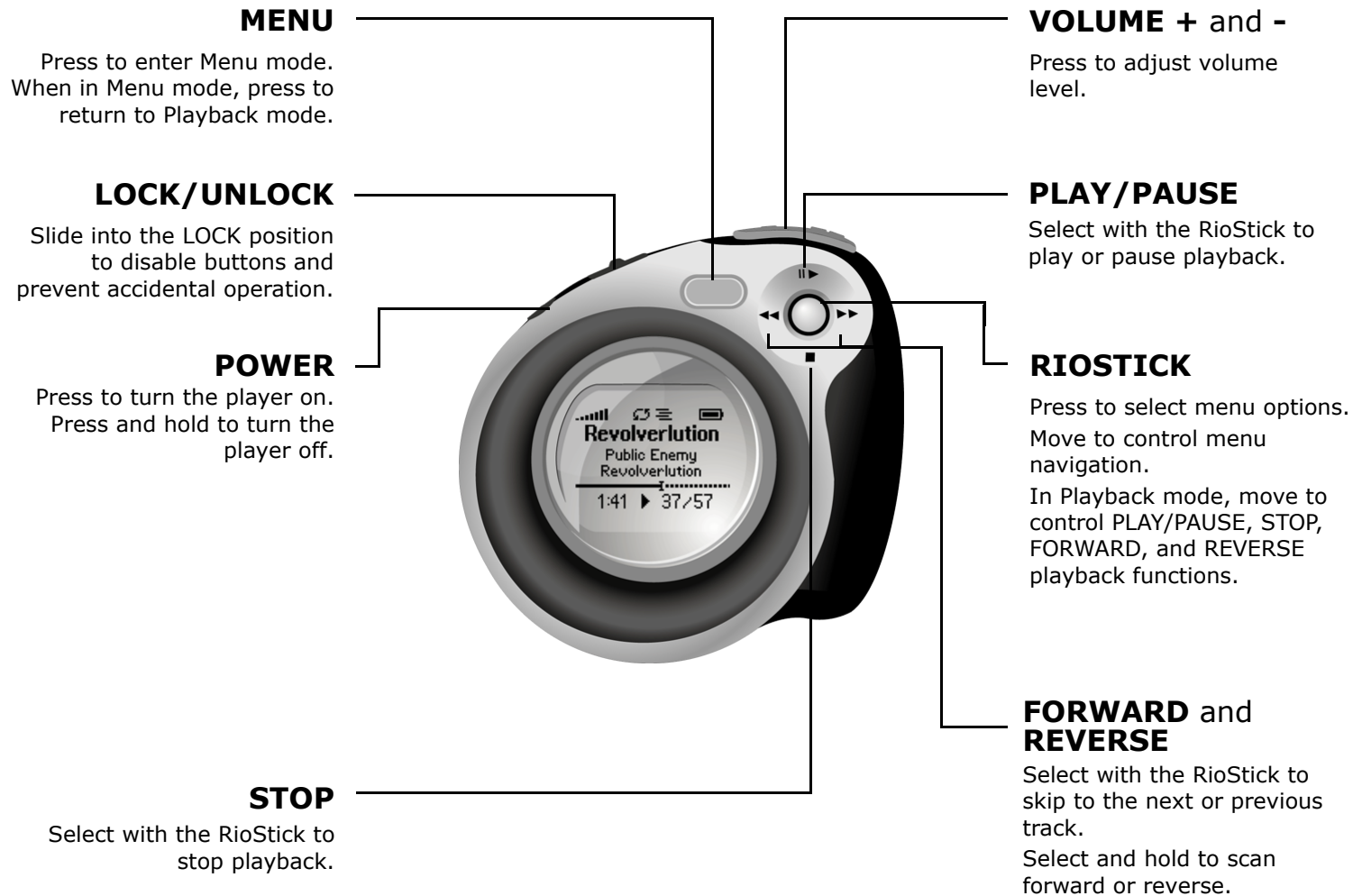
:: Welcome

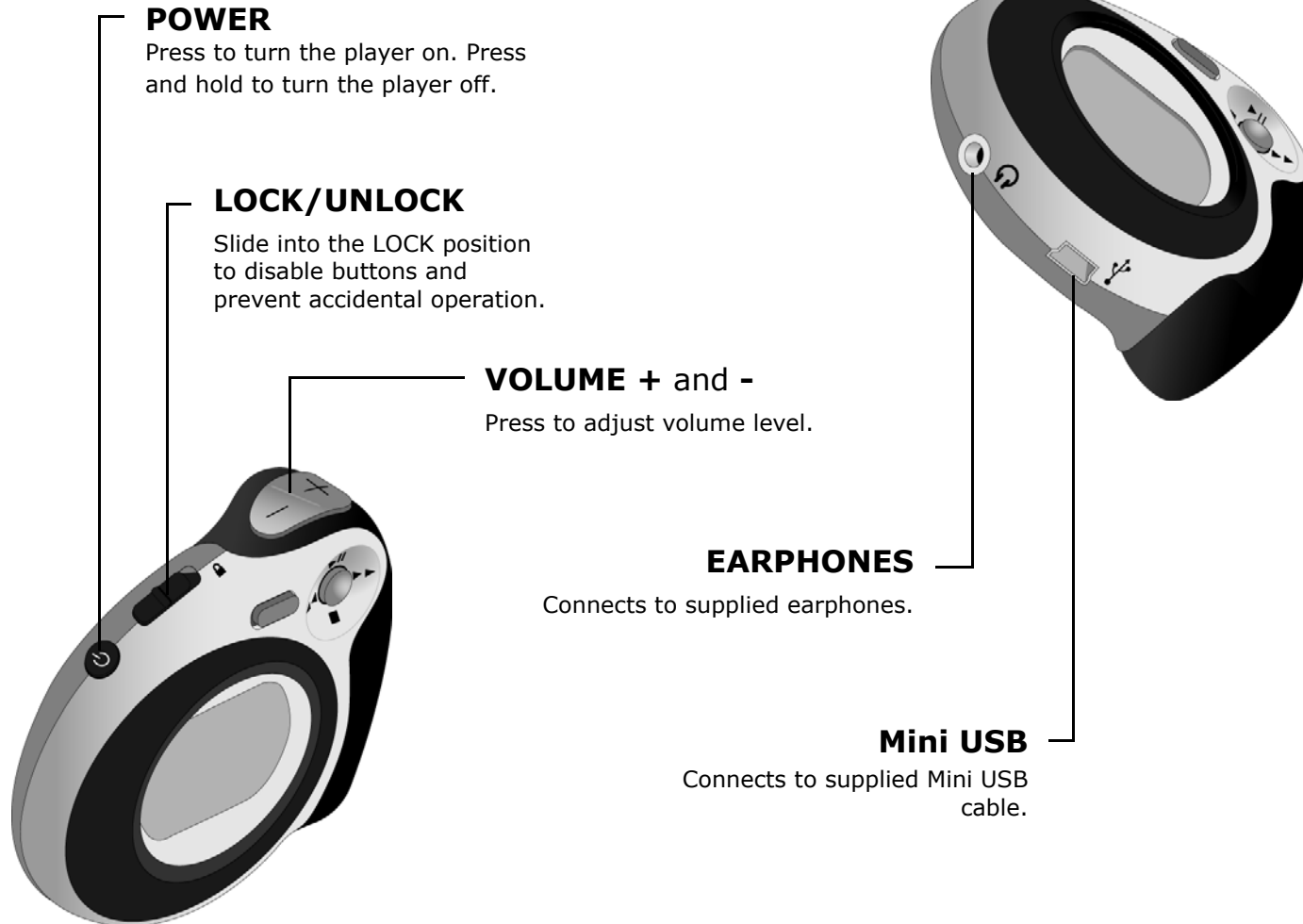
Thank you for purchasing the Rio Cali. The Rio Cali is a portable digital audio player that provides many hours of MP3 and WMA playback. The Rio Cali features a lighted LCD, a memory expansion slot, stopwatch, and an FM radio tuner.

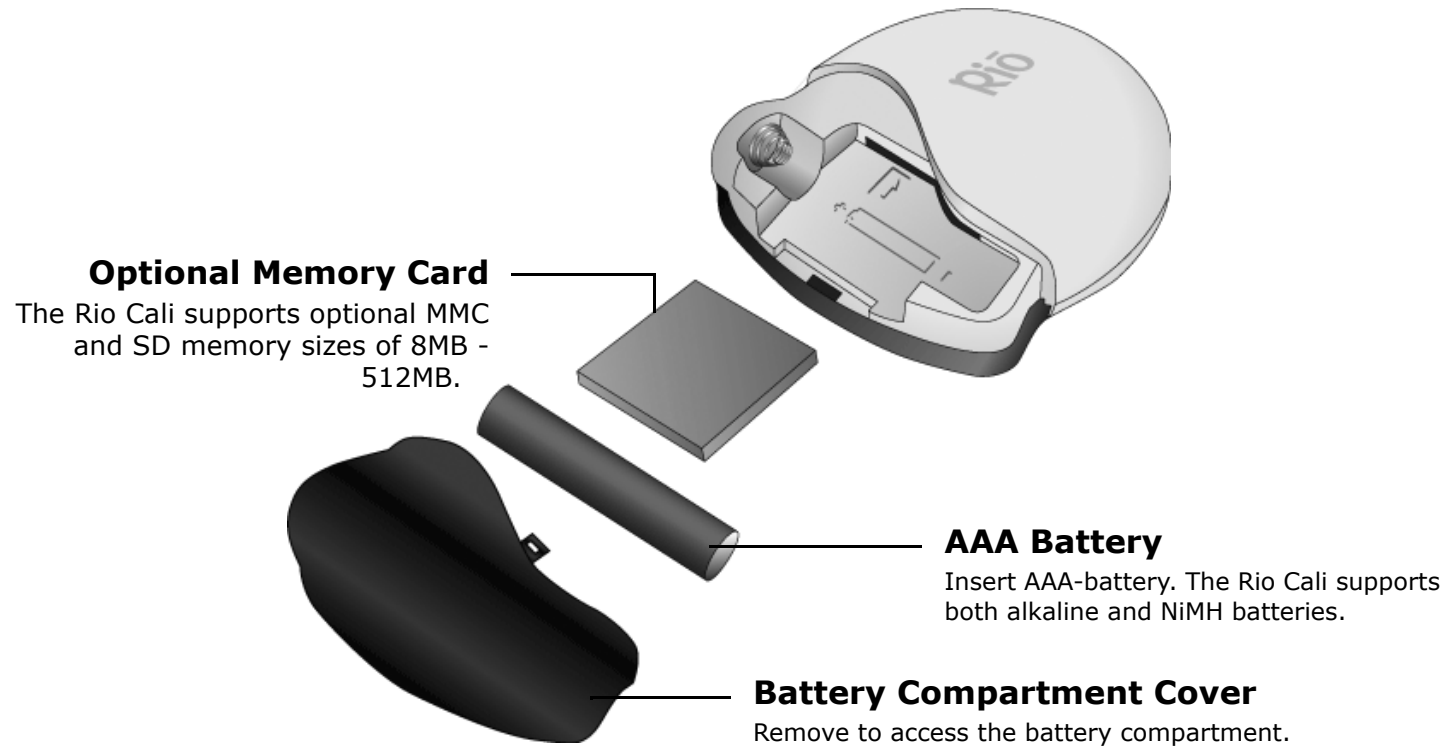
Learning More

- Refer to the Quick Start poster for the basics on how to set up and start using the Rio Cali.
- Visit the Rio website at www.rioaudio.com.

:: Tour of the Rio Cali

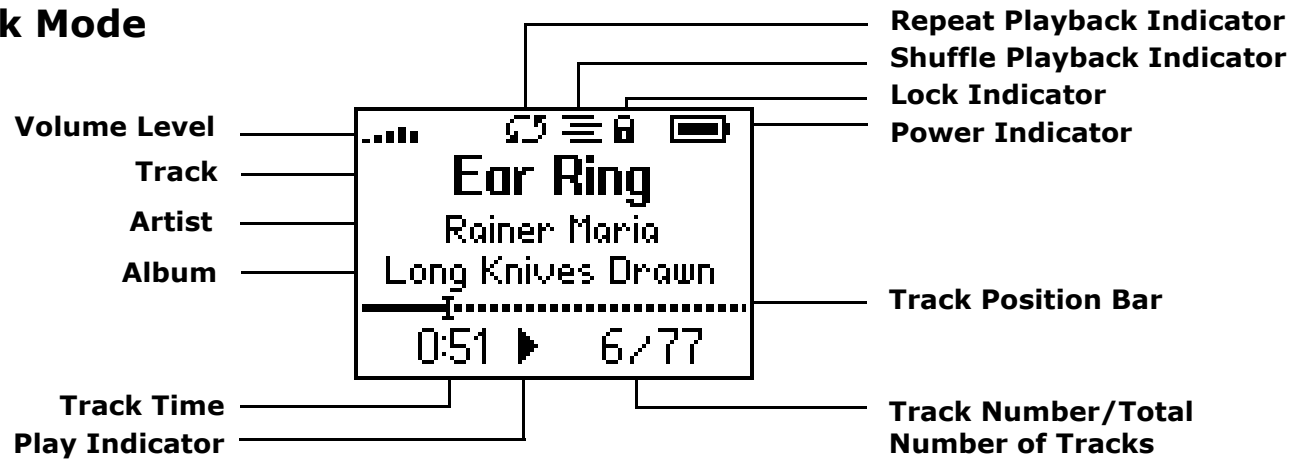




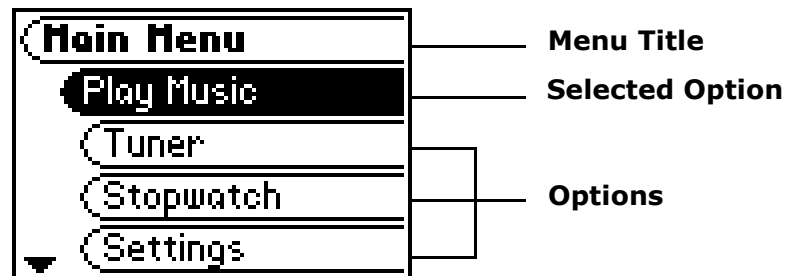


:: LCD Overview

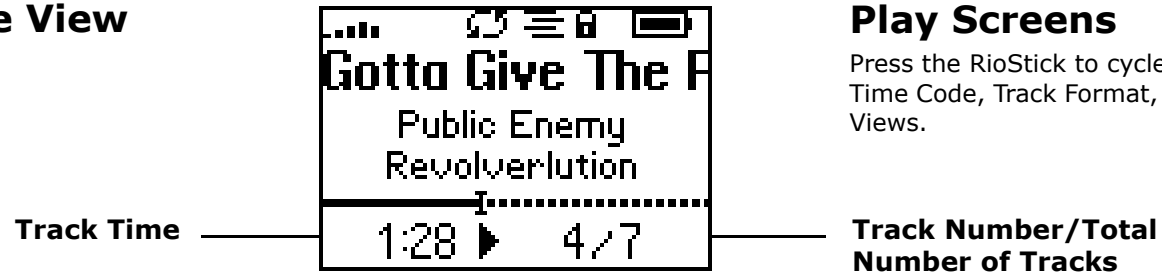
Playback Mode



Menu Mode



Time Code View



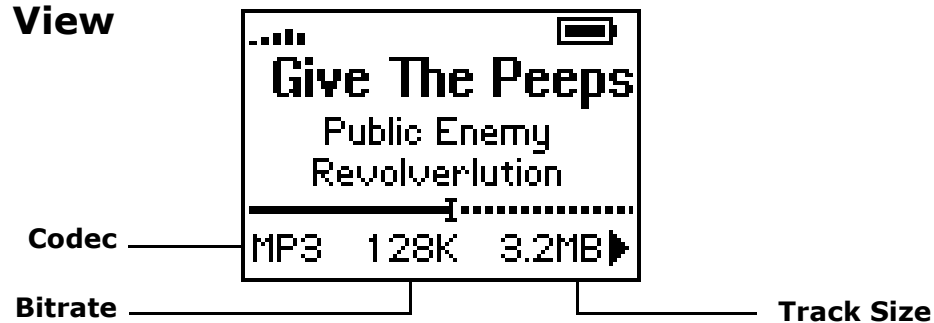
Play Screens

Press the RioStick to cycle through Time Code, Track Format, and Date Views.

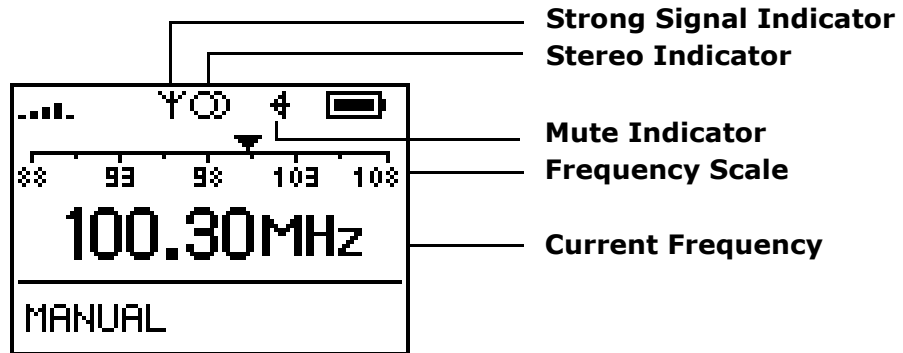
Date View



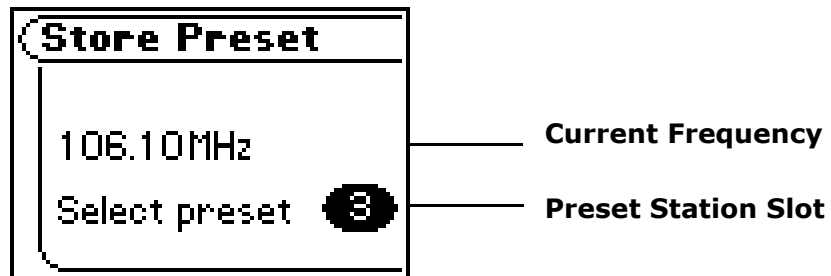
Track Format View



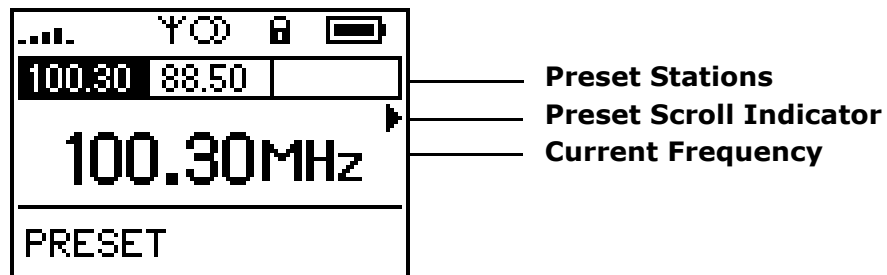
**FM Radio
Manual**



**FM Radio
Store Preset**



**FM Radio
Preset**



Chapter 2

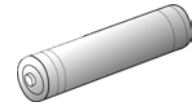
Connections

:: Basic Connections

This chapter describes how to connect the Rio Cali to Earphones, Mini USB cables, and alternate devices. Basic connections include:

Battery

The Rio Cali uses a single AAA-battery that can provide many hours of use. The [battery compartment cover](#) must be removed before a battery can be installed.



Earphones

Connect the supplied earphones to the **EARPHONES** port on the top of the player.



USB

The player must be connected using the included USB cable to the USB port on your computer to transfer music or files to and from the player and your computer.



USB Detection with the Windows Device Driver

USB connectivity is ready to work immediately after [Rio Music Manager](#) has been installed.

If for any reason the Windows Device Driver Wizard is displayed after the USB cable has been plugged into both the Rio Cali and the computer, please follow these steps:

- 1 Confirm the Rio installation CD is in the computer's CD-ROM drive.
- 2 Check the **CD-ROM Drives** box when the Windows Device Driver Wizard requests the location of the Rio Cali drivers.
- 3 Click **Next** and follow the Windows Device Driver Wizard instructions.



Additional Accessories

Get the most out of your Rio with additional accessories available online at the Rio [website](#). Some of the most popular accessories include the following:

- **Rio Car Stereo Adapter**

Upgrade your car stereo for hundreds of dollars less than buying a new MP3 CD player. The Rio car stereo adapter lets you play your favorite music in any vehicle equipped with a standard cassette deck.



Chapter 3

Software Setup

Software Setup

Software found on the Rio installation disc must be installed on a computer before it will recognize the Rio Cali. Rio Music Manager must be installed on computers that use the Windows operating systems. iTunes must be installed on computers that use the Mac operating system.

[Windows](#)

[Mac](#)

:: Windows

Follow these instructions to load software that enables a computer to recognize the Rio Cali. The installation also loads [Rio Music Manager](#).


- 1 Place the installation CD label-side up into the computer's CD-ROM drive.

The Rio installation software launches automatically.

- 2 Click **Rio Music Manager INSTALL NOW** (required) and follow the on-screen instructions. Additionally, one may click **RealOne Player INSTALL NOW** and follow its installation instructions as well.
- 3 If prompted, reboot the computer when the installation is complete.



- If Rio installation software does not display automatically, follow these steps to begin the installation manually:

- 4 Double-click the **My Computer** icon,  , on the Windows desktop.

- 5 Double-click the **CD-ROM** icon,  .

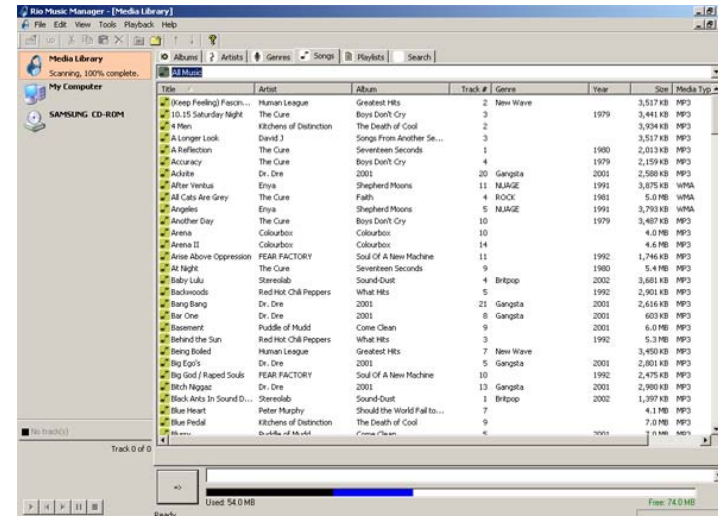
- 6 Double-click the **Install** icon,  .

- 7 Go to Step 2.

Rio Music Manager

Rio Music Manager is an all-in-one solution that can rip, encode, and manage entire collections of digital audio tracks. Rio Music Manager provides the following capabilities:

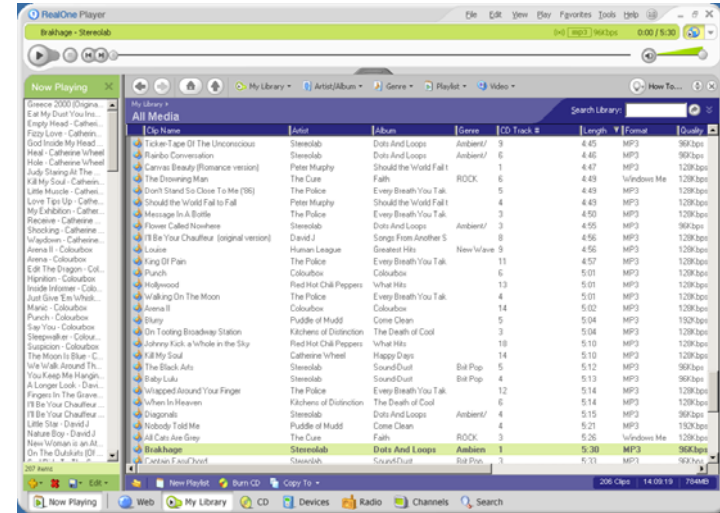
- Save (**rip and encode**) audio CDs into compressed digital audio formats. Rio Music Manager encodes WMA files by default and MP3 via an optional upgrade pack.
- Automatically **synchronize** the music collection on your computer with your Rio Cali.
- Edit **ID3** and **WMA** tags on digital audio tracks.
- Organize and manage digital audio tracks on your computer and Rio Cali.
- Search for tracks on your computer and Rio Cali.
- Create custom playlists.
- Transfer tracks from your computer to Rio Cali.



RealOne Player

The RealOne player is included on the Rio installation CD and provides full speed CD ripping and encoding features perfect for the digital audio enthusiasts. Support for the RealOne player can be found [here](#). RealOne offers the following features:

- Save ([rip and encode](#)) your audio CDs into compressed digital audio formats including MP3 and WMA.
- Organize digital audio tracks on your computer.
- Search for tracks on your computer or on the Internet.
- Create custom CDs.
- Transfer tracks from your computer to the Rio Cali.



:: Mac

Follow these instructions to load the software that enables your Macintosh to recognize the Rio Cali. The installation also loads iTunes music management software.

- 1 Place the software CD label-side up into the computer's CD-ROM drive.

Double-click the Rio icon,  , on your computer's desktop.



Rio



Install_OSX

- 2 Double-click the **Install OSX** icon,  .

The Rio Software Screen will display.

- 3 Click **Install**.
- 4 Follow the on-screen instructions to install the software.
- 5 If prompted, reboot the computer when the installation is complete.



- *Rio installation software only supports the OSX operating system.*

iTunes

Apple's iTunes is standard software included with every new Mac. Upgrading from older versions of iTunes to the most current version of iTunes is absolutely free. iTunes is available [online](#). Support for iTunes can be found [here](#). iTunes offers the following features:

- Save ([rip and encode](#)) your audio CDs into compressed digital formats including MP3s.
- Organize digital audio tracks on your computer.
- Search for tracks on your computer.
- Create custom CDs.



:: Basic Operations

Enjoying music on the Rio Cali is easy. Basic operations of the Rio Cali include:

- Copy
- Transfer
- Control
- Play

:: Copy

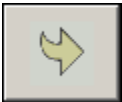
Copying Tracks with Rio Music Manager

Copying tracks from Audio CDs involves two steps commonly known as ripping and encoding. Ripping and encoding refers to the process of ripping (copying) audio from a CD and encoding (saving) the audio content into a compressed digital audio format like MP3 or WMA.

- 1 Launch the Rio Music Manager.
- 2 Insert an Audio CD into your CD-ROM drive.
- 3 Click the CD-ROM icon on the Rio Music Manager Device List.
- 4 Use any of the following techniques to select tracks:

Track Type	Technique
Single track.	<ul style="list-style-type: none">• Left-click the track.
Multiple tracks.	<ul style="list-style-type: none">• Press SHIFT+Click or CTRL+Click.
All tracks.	<ul style="list-style-type: none">• Press CTRL+A.
No tracks.	<ul style="list-style-type: none">• Press CTRL+N.
Every track except for the currently selected tracks.	<ul style="list-style-type: none">• Select Edit, Invert Selection.

- 5 Click  to begin copying tracks to your computer.



:: Transfer

Rio Music Manager

Transferring tracks from the PC to the Rio Cali with the Rio Music Manager involves selecting tracks, then transferring them onto the player.

- 1 Launch the Rio Music Manager.
- 2 Click **My Music** in the left frame to access tracks. Rio Music Manager will scan the computer's hard drives for digital audio files that are compatible with the Rio Cali player. Files are automatically categorized by album title and displayed in the Track List.
- 3 Select tracks within a category of tracks. Categories include Albums, Artists, Genres, Songs, and Playlists.

For example, if you wish to copy all tracks from a favorite artist onto the player, click the Artists tab and then use any of the techniques in **Step 4** to select the desired tracks.

- 4 Use any of the following techniques to select files:

File type	Technique
Single track, album, or artist.	<ul style="list-style-type: none"> • Left-click the track, album, or artist.
Multiple tracks, albums, and/or artists.	<ul style="list-style-type: none"> • Press SHIFT+Click or CTRL+Click.
All tracks, albums, and artists.	<ul style="list-style-type: none"> • Press CTRL+A.
No tracks, albums, or artists.	<ul style="list-style-type: none"> • Press CTRL+N.
Every track except for the currently selected tracks.	<ul style="list-style-type: none"> • Select Edit, Invert Selection.

- 5 After the tracks have been selected they can be copied to the Rio Cali by clicking



.

RealOne Player

- 1 Launch RealOne Player.
- 2 Connect the player to a computer using the USB cable.
- 3 Power the Rio Cali on.
- 4 Click **DEVICES** at the bottom of the RealOne Player window.

The Devices window is displayed.

- 5 Double-click **Rio Cali**.
- 6 Click **ADD CLIPS** in the command bar at the bottom of the RealOne Player window.

The Add Clips window is displayed.



- *Tracks can be added from **My Library** by selecting tracks to be transferred and clicking **COPY TO** on the **My Library** command bar.*

- 7 Select the tracks to be transferred to the Rio Cali. Click **Add Clip** to queue the tracks to be transferred and close the Add Clips window.
- 8 Click **TRANSFER** in the command bar at the bottom of the window to begin transferring the selected tracks to the Rio Cali. Tracks labeled **Will Not Fit** will not be transferred. **Will Not Fit** status indicates that the total size of the tracks being transferred to the Rio Cali exceeds the available memory.



- *Only MP3 and WMA files can be transferred. An error message will be displayed if unsupported files are transferred unsuccessfully to the player.*

iTunes

- 1 Launch iTunes.
- 2 Connect the player to a USB port on the computer.
- 3 Power the Rio Fuse on.
- 4 Click **Library** in the iTunes Source frame.
- 5 Select tracks to transfer.
- 6 Drag and drop selected tracks to the **Rio Fuse Player** in the iTunes Source frame.



- *iTunes will only refresh the audio contents located on the Rio Fuse Player after all selected tracks have been transferred.*

:: Control

The controls on the Rio Cali work as follows:

- **POWER**
Press to turn the player on. Press and hold to turn the player off.
- **MENU**
Press to enter Menu mode. In Menu mode, press to return to Playback mode.
- **RIOSTICK (Press)**
In Playback mode, press to cycle through [Play Screens](#). In Menu mode, press to select menu options.
- **RIOSTICK (Movement)**
Move to control menu navigation. In Playback mode, move to control **PLAY/PAUSE**, **STOP**, **FORWARD**, and **REVERSE** playback functions.
- **PLAY/PAUSE**
Select with the RioStick to play or pause playback.
- **FORWARD** and **REVERSE**
Select with the RioStick to skip to the next or previous track. Select and hold to scan forward or reverse through a track.
- **STOP**
Select with the RioStick to stop playback.
- **VOLUME +** and **-**
Press to adjust volume level.
- **LOCK/UNLOCK**
Slide into the **LOCK** position to disable buttons and prevent accidental operation.



Controls

Locations of all controls can be found on page 2 and 3.

:: Play

The Rio Cali plays digital audio tracks in Playback mode and FM radio in Tuner mode. Modes can be changed at anytime through the main menu.



[Play Music](#)

[Tuner](#)

:: Play Music

In Playback mode (the default mode), any track or preset customized playlist can be played within a matter of seconds.



Play All
Play Track
Playlists



- If the Rio Cali does not power on after **POWER** has been pressed, check the **LOCK/UNLOCK** switch and confirm it is in the **UNLOCK** position.

Play All

Follow these steps to play all tracks on the Rio Cali:

- 1 Press **MENU**.
- 2 Select **Play Music**.
- 3 Press **RIOSTICK**.
- 4 Select **Play All**.
- 5 Press **RIOSTICK** to begin playback.

Play Track

Follow these steps to play a specific track on the Rio Cali:

- 1 Press **MENU**.
- 2 Select **Play Music**.
- 3 Press **RIOSTICK**.
- 4 Select **Play Track**.
- 5 Press **RIOSTICK**.
- 6 Select a track to play.
- 7 Press **RIOSTICK** to begin playback.

Playlists

Follow these steps to play a specific playlist on the Rio Cali:

- 1 Press **MENU**.
- 2 Select **Play Music**.
- 3 Press **RIOSTICK**.
- 4 Select **Playlists**.
- 5 Press **RIOSTICK**.
- 6 Select a playlist to play.
- 7 Press **RIOSTICK** to begin playback.

:: Tuner

To access Tuner mode:

- 1 Press **MENU**.
- 2 Select **Tuner**.
- 3 Press **RIOSTICK**.

FM Control

Manual

Preset

Store Preset

FM Control

When in Tuner mode, the following controls function differently:

- **RIOSTICK** (Press)
Press to enter [Preset](#) mode. Press and hold to enter [Store Preset](#) mode.
- **RIOSTICK** (Movement)
Move to control **PLAY/PAUSE**, **STOP**, **FORWARD**, and **REVERSE** functions.
- **PLAY/PAUSE**
In Manual mode, select with the RioStick to mute the FM radio.
- **FORWARD** and **REVERSE**
In Manual mode, select with the RioStick to tune up or down the frequency range. In Manual mode, select and hold to search up or down the frequency range for particularly strong signals.
- **STOP**
Select and hold to turn off the Manual mode strong signal search. When turned off, **no search** is displayed and selecting and holding **FORWARD** or **REVERSE** will scan up or down the frequency range manually.

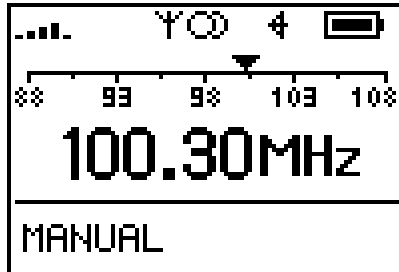


Controls

Locations of all controls can be found on page 2 and 3.

Manual

Follow these steps to enter the manual Tuner mode:



- 1 Press **MENU**.
- 2 Select **Tuner**.
- 3 Press **RIOSTICK**.

Store Preset

The Rio Cali allows programming of up to 8 FM preset slots.

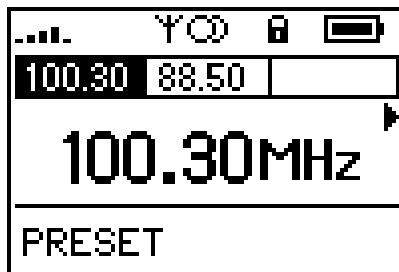


- 1 When in Manual mode, tune to a frequency you wish to store to a preset slot.
- 2 Press and hold **RIOSTICK** to enter **Store Preset** mode.
- 3 Select **FORWARD** or **REVERSE** with the RioStick to cycle to the desired preset station slot.
- 4 Press **RIOSTICK** to store the frequency to the selected FM preset slot.

After a frequency has been stored to a slot the player will enter Preset mode.

Preset

FM preset slots can be accessed within seconds using Preset mode.



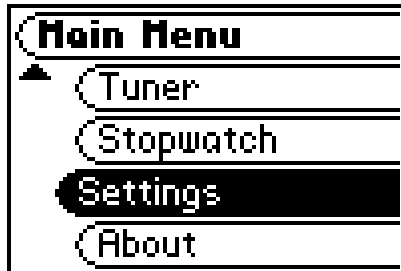
- 1 When in Manual mode, press **RIOSTICK** to enter Preset mode.
- 2 Select **FORWARD** or **REVERSE** with the RioStick to cycle to the desired preset station slot.
- 3 Press **RIOSTICK** to select a preset station and return to Manual mode.

Chapter 5

Advanced Features

:: Advanced Features

Advanced features of the Rio Cali include:



[Stopwatch](#)

[Settings](#)

[About](#)

:: Stopwatch

Use the stopwatch to keep track of time-sensitive events while listening to music.

- 1 Press **MENU**.
- 2 Select **Stopwatch**.
- 3 Press **RIOSTICK**.

Lap statistics are displayed at the bottom of the **Stopwatch** screen. When a new lap is set, the difference, either faster (-) or slower (+) between new lap times and the average laptime is displayed for a few moments.

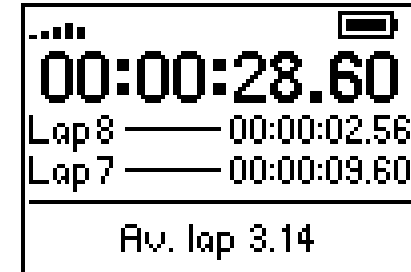
When in **Stopwatch** mode, the controls work in the following ways:

- **MENU**
Press to return to the **Main Menu**.

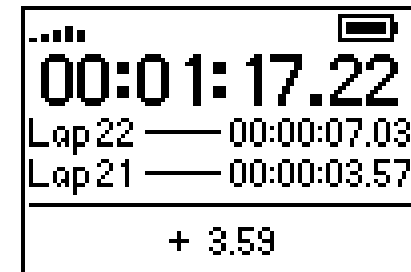


- *Pressing **MENU** and using other player functions will not turn the timer off. The timer will continue to run until the RioStick is moved into the Up position (**PLAY/PAUSE**) while in **Stopwatch** mode.*

- **RIOSTICK** (Press)
Press to set a lap time. Press and hold to return to single lap display. Multiple laps and lap averages will be lost.
- **RIOSTICK** (Up)
Press to start and stop the timer.
- **RIOSTICK** (Down)
Press to reset timer.



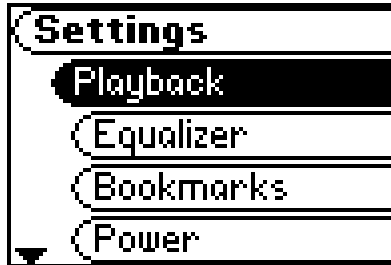
Average Lap Time



Lap Difference

:: Settings

Rio Cali settings include:



[Playback](#)

[Equalizer](#)

[Bookmarks](#)

[Power](#)

[Resume](#)

[Display](#)

[Time](#)

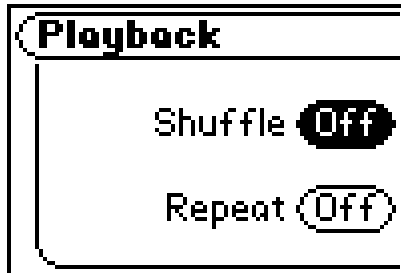
[Language](#)

[Tuner](#)

[Lock Setup](#)

:: Playback

Various playback settings can be set to modify the way the Rio Cali plays tracks. Tracks can be shuffled at random and/or repeated continuously.



- 1 Press **MENU**.
- 2 Select **Settings**.
- 3 Press **RIOSTICK**.
- 4 Select **Playback**.
- 5 Press **RIOSTICK**.
- 6 Select **Playback** options.
- 7 Press **RIOSTICK** to apply settings and return to Player mode.

Playback options include:

- **Shuffle**
Set selected tracks to play in standard or random order. Settings include **Off** (the default setting) and **On**.
- **Repeat**
Set selected tracks to repeat playback of all tracks or the current track. Settings include **Off** (the default setting), **All**, and **One**.

:: Equalizer

The sound of tracks played on the Rio can be adjusted using various preset and fully customizable equalizer options. Equalizer settings include:

Custom

Custom mode allows the player's settings to be adjusted according to personal preferences.

- 1 Press **MENU**.
- 2 Select **Settings**.
- 3 Press **RIOSTICK**.
- 4 Select **Equalizer**.
- 5 Press **RIOSTICK**.
- 6 Select **Custom**.
- 7 Adjust 5-band equalizer. Press **FORWARD** or **REVERSE** to navigate between frequencies. Press **PLAY/PAUSE** or **STOP** to boost or cut the [gain](#) of the frequency.
- 8 Press **RIOSTICK** to return to Player mode.

Normal

Select the **Normal** equalizer option to apply no equalizer adjustments to audio content on the Rio Cali.

- 1 Press **MENU**.
- 2 Select **Settings**.
- 3 Press **RIOSTICK**.
- 4 Select **Equalizer**.
- 5 Press **RIOSTICK**.
- 6 Select **Normal**.
- 7 Press **RIOSTICK** to set the **Normal** equalizer option and return to Player mode.

Rock

Select the **Rock** equalizer option to change the sound of tracks according to the **Rock** preset settings.

- 1 Press **MENU**.
- 2 Select **Settings**.
- 3 Press **RIOSTICK**
- 4 Select **Equalizer**.
- 5 Press **RIOSTICK**.
- 6 Select **Rock**.
- 7 Press **RIOSTICK** to set the **Rock** equalizer option and return to Player mode.

Jazz

Select the **Jazz** equalizer option to change the sound of tracks according to the **Jazz** preset settings.

- 1 Press **MENU**.
- 2 Select **Settings**.
- 3 Press **RIOSTICK**
- 4 Select **Equalizer**.
- 5 Press **RIOSTICK**.
- 6 Select **Jazz**.
- 7 Press **RIOSTICK** to set the **Jazz** equalizer option and return to Player mode.

Classical

Select the **Classical** equalizer option to change the sound of tracks according to the **Classical** preset settings.

- 1 Press **MENU**.
- 2 Select **Settings**.
- 3 Press **RIOSTICK**
- 4 Select **Equalizer**.
- 5 Press **RIOSTICK**.
- 6 Select **Classical**.
- 7 Press **RIOSTICK** to set the **Classical** equalizer option and return to Player mode.

Pop

Select the **Pop** equalizer option to change the sound of tracks according to the **Pop** preset settings.

- 1 Press **MENU**.
- 2 Select **Settings**.
- 3 Press **RIOSTICK**
- 4 Select **Equalizer**.
- 5 Press **RIOSTICK**.
- 6 Select **Pop**.
- 7 Press **RIOSTICK** to set the **Pop** equalizer option and return to Player mode.

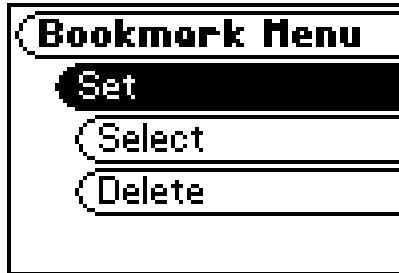
Trance

Select the **Trance** equalizer option to change the sound of tracks according to the **Trance** preset settings.

- 1 Press **MENU**.
- 2 Select **Settings**.
- 3 Press **RIOSTICK**
- 4 Select **Equalizer**.
- 5 Press **RIOSTICK**.
- 6 Select **Trance**.
- 7 Press **RIOSTICK** to set the **Trance** equalizer option and return to Player mode.

:: Bookmarks

Perfect for multiple users who use the same Rio Cali, bookmarks store specific player settings, including the current running order, the current track, the current time position of the track, the repeat setting, and the shuffle setting. Users can save these settings in a bookmark and restore them whenever they use the player.



- 1 Press **MENU**.
- 2 Select **Settings**.
- 3 Press **RIOSTICK**.
- 4 Select **Bookmarks**.
- 5 Press **RIOSTICK**.
- 6 Select a Bookmark option.
- 7 Press **RIOSTICK**.

Bookmark options include:

- **Select**
Use **RIOSTICK** to select a bookmark. Press **RIOSTICK** to restore the selected bookmark settings.
- **Set**
Press **RIOSTICK** to set a bookmark.
- **Delete**
Use **RIOSTICK** to select a bookmark. Press **RIOSTICK** to delete the selected bookmark.



- *The Rio Cali automatically saves user settings when it is turned off. These settings are automatically restored when the Rio Cali is turned on. Settings saved automatically are not saved as a bookmarks.*

:: Power

By adjusting the **Power** settings the Rio Cali can conserve energy and extend the amount of playback time during each battery charge.



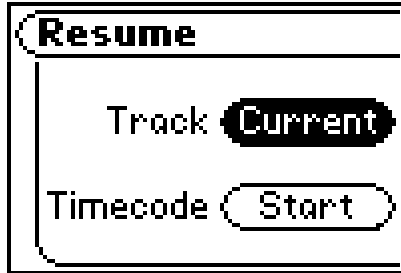
- 1 Press **MENU**.
- 2 Select **Settings**.
- 3 Press **RIOSTICK**.
- 4 Select **Power**.
- 5 Press **RIOSTICK**.
- 6 Select **Power** options.
- 7 Press **RIOSTICK** to apply settings and return to Player mode.

Power options include:

- **Battery**
Although the Rio Cali ships with an Alkaline battery, it can also use rechargeable Nickel-Metal Hydride (NiMH) batteries. The **Battery** option must be set to the same battery type that is being used or the battery indicator will not display the correct amount of battery life. Settings include **Alkaline** (the default setting) and **NiMH**.
- **Pwr Save**
Set the player to enter standby mode after being idle for a specific number of minutes. When in standby mode, the player conserves energy and behaves as if it was shutdown, but maintains the ability to power on immediately. Settings include **1m**, **5m** (the default setting), **10m**, **30m**, and **Never**.

:: Resume

Use the options in the **Resume** menu to set the track that the player will play whenever the player restarts.



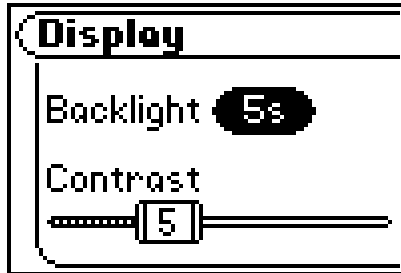
- 1 Press **MENU**.
- 2 Select **Settings**.
- 3 Press **RIOSTICK**.
- 4 Select **Resume**.
- 5 Press **RIOSTICK**.
- 6 Select **Resume** options.
- 7 Press **RIOSTICK** to apply settings and return to Player mode.

Resume options include:

- **Track**
Set the player to begin playback of the last track played before shutdown or the first track in the running order when the player restarts. Settings include **Current** (the default setting) and **First**.
- **Timecode**
Set the player to begin playback of the last track played at the point the track was at during shutdown or at the start of the track. Settings include **Current** (the default setting) and **Start**.

:: Display

Use the **Display** menu to adjust backlight and contrast settings.



- 1 Press **MENU**.
- 2 Select **Settings**.
- 3 Press **RIOSTICK**.
- 4 Select **Display**.
- 5 Press **RIOSTICK**.
- 6 Adjust **Backlight** options and **Contrast** settings.
- 7 Press **RIOSTICK** to apply settings and return to Player mode.

- **Backlight**

Set the backlight on the player to shut itself off after a specific number of seconds. Settings include **Off**, **2s**, **5s**, (the default setting) **10s**, **20s**, and **On**. **On** sets the backlight to remain lit constantly.



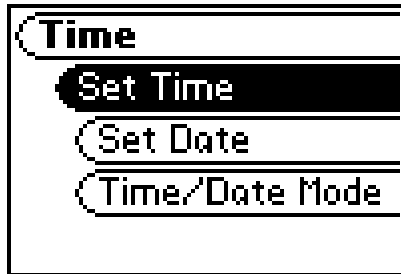
- *To conserve battery life, the **On** setting should rarely be used.*

- **Contrast**

Move **RIOSTICK** to control the contrast slider. Use the contrast slider to set how light or dark the images on the LCD will appear. Setting the contrast too high will result in washed out images. Setting the contrast too dark will result in images that are too dark to read.

:: Time

Use the options in the **Time** menu to set the player's internal clock.



- 1 Press **MENU**.
- 2 Select **Settings**.
- 3 Press **RIOSTICK**.
- 4 Select **Time**.
- 5 Press **RIOSTICK**.
- 6 Select **Set Time**, **Set Date**, or **Time/Date Mode** options.
- 7 Press **RIOSTICK** to apply settings and return to Player mode.

Time settings include:

- **Set Time**
Options include **Hour**, **Minute**, and **AM / PM**.
- **Set Date**
Options include **Month**, **Day**, and **Year**.
- **Time/Date Mode**
Options include **12 hour** (the default setting) and **24-hour** time formats and **USA** (the default setting), **Europe**, and **Japan** date formats.

:: Language

The Rio Cali menus can be set to display one in of six languages.



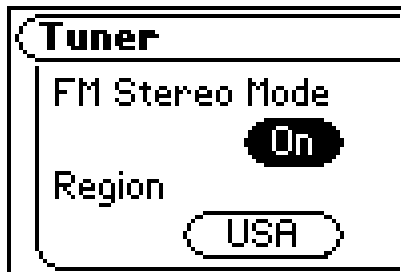
- 1 Press **MENU**.
- 2 Select **Settings**.
- 3 Press **RIOSTICK**.
- 4 Select **Language**.
- 5 Press **RIOSTICK**.
- 6 Select a **Language** setting.
- 7 Press **RIOSTICK**.

Language settings include:

- **English** (the default setting)
Set the player display language to **English**.
- 日本語
Set the player display language to **Japanese**.
- **Deutsch**
Set the player display language to **German**.
- **Français**
Set the player display language to **French**.
- **Español**
Set the player display language to **Spanish**.
- **Italiano**
Set the player display language to **Italian**.

:: Tuner

Use the options in the **Tuner** menu to set the player's FM radio settings.



- 1 Press **MENU**.
- 2 Select **Settings**.
- 3 Press **RIOSTICK**.
- 4 Select **Tuner**.
- 5 Press **RIOSTICK**.
- 6 Select **FM Stereo Mode** and **Region** options.
- 7 Press **RIOSTICK**.

Tuner Options include:

- **FM Stereo Mode**
Options include **On** (the default setting), and **Off**. Selecting **Off** will place the tuner in mono mode.
- **Region**
Options include **USA** (tunes by .2MHz, the default setting), and **Europe** (tunes by .05MHz).

:: Lock Setup

Use the options in the **Lock Setup** menu to enable volume and RioStick control when the lock is enabled.



- 1 Press **MENU**.
- 2 Select **Settings**.
- 3 Press **RIOSTICK**.
- 4 Select **Lock Setup**.
- 5 Press **RIOSTICK**.
- 6 Select **Lock Volume** and **RioStick** options.
- 7 Press **RIOSTICK** to apply settings and return to Player mode.

Lock Setup settings include:

- **Lock Volume**
Options include **On** (the default setting) and **Off**. When set to **Off**, the volume level can be adjusted even when the Rio Cali has been locked.
- **RioStick**
Options include **Lock** and **▶ / ||**. When set to **▶ / ||**, any RioStick movement will be interpreted as the **▶ / ||** control.

:: About

The about screen displays information about the Rio Cali. Information includes the total amount of space on the disk, the amount of free space, the number of tracks on the player, and the [firmware](#) version.



- 1 Press **MENU**.
- 2 Select **About**.
- 3 Press **RIOSTICK**.
- 4 Select **Player** or **Storage**.
- 5 Press **RIOSTICK**.

About options include:

- **Player**
Displays firmware version, copyright, and Rio website information.
- **Storage**
Displays disk usage graphic bar, disk usage (MB used/MB capacity), and the total number of tracks.

Chapter 6

:: Troubleshooting

Customer Service Information

The FAQs below will help you solve common issues with your player. If you do not find the answers you need here, you can contact our Customer Service Department via any of the following methods:

Web: www.rioaudio.com/support

Technical Support Telephone: (206) 515-1400

Customer Support Telephone: (800) 468-5846

With every Rio product you receive the following support services:

- Unlimited access to the Rio web-based technical information resources, available 24 hours a day every day at <http://www.rioaudio.com/support>. Here you will find FAQ files, product updates, and other useful information.
- Unlimited e-mail support for the duration of your Rio product hardware warranty period.
- Access to the latest software updates and enhancements for Rio products via our [website](#).

Frequently Asked Questions

Question	Answer
What size and type of external memory cards can my Rio Cali use?	<ul style="list-style-type: none"> The Rio Cali currently supports SD and MMC memory sizes of 8MB - 512MB. Please visit the Rio support site at www.rioaudio.com/support for more information on external memory cards.
How do I install an external memory card?	<ol style="list-style-type: none"> 1 Turn the Rio Cali off. 2 Remove the battery compartment cover on the back of the player. 3 Remove the battery. 4 Gently insert the external memory card with the label side up and the notch in the upper right corner into the memory card slot next to the battery compartment. 5 Replace the battery. 6 Replace the battery compartment cover. 7 Turn the Rio Cali on.
What type of files can I play with the Rio Cali?	<ul style="list-style-type: none"> You can play MP3 and WMA files.
Can I add MP3 and WMA files to the player at the same time?	<ul style="list-style-type: none"> Yes. You can play MP3 and WMA audio content. They can be mixed together.
What are the differences between MP3 and WMA files?	<ul style="list-style-type: none"> WMA files are generally half as large as comparable sounding MP3 files. Because WMA uses smaller file sizes, you can store more music in less space on CDs, hard drives, or the Rio Cali. The WMA format is exclusive to Windows-based computers.
Will the Rio Cali play Variable Bitrate (VBR) files?	<ul style="list-style-type: none"> Yes. Because there are many standards for VBR files, it cannot be guaranteed that every encoding software package will properly function with the Rio Cali. VBR files that do not comply to standards may lack track time, fast forward, and/or rewind capabilities.

<p>What kind of batteries can I use with the Rio Cali?</p>	<ul style="list-style-type: none"> The Rio Cali can use either alkaline or Nickel-Metal Hydride (NiMH) batteries. 												
<p>Where is the battery indicator on my Rio Cali?</p>	<ul style="list-style-type: none"> The battery indicator on the Rio Cali is located in the top-right corner of the display. The segments in the battery icon show the remaining battery power. The illumination of all segments indicates a fully charged battery. Non-illuminated segments indicate a run down battery. The battery indicator blinks when less than 20% of the charge on the battery remains. 												
<p>What kind of skip protection does the Rio Cali have?</p>	<ul style="list-style-type: none"> Because the Rio Cali uses no moving parts it will never skip or stutter during audio playback. 												
<p>Why will the Rio Cali not turn on?</p>	<ul style="list-style-type: none"> The Rio Cali will not power on if LOCK/UNLOCK is in the lock position. Confirm the LOCK/UNLOCK switch on the Rio Cali is not in the lock position and press POWER to turn the Rio Cali on. 												
<p>How much music can I store on the Rio Cali?</p>	<ul style="list-style-type: none"> The amount of music that can be stored on the Rio Cali depends on the bitrate of the files stored. <table border="0" data-bbox="676 631 1574 873"> <thead> <tr> <th style="text-align: center;">Bitrate</th> <th style="text-align: center;">Approximate amount of space required per minute of audio content</th> </tr> </thead> <tbody> <tr> <td style="text-align: center;">64 kbps</td> <td style="text-align: center;">0.5 MB</td> </tr> <tr> <td style="text-align: center;">96 kbps</td> <td style="text-align: center;">0.75 MB</td> </tr> <tr> <td style="text-align: center;">128 kbps</td> <td style="text-align: center;">1 MB</td> </tr> <tr> <td style="text-align: center;">164 kbps</td> <td style="text-align: center;">1.25 MB</td> </tr> <tr> <td style="text-align: center;">192 kbps</td> <td style="text-align: center;">1.75 MB</td> </tr> </tbody> </table>	Bitrate	Approximate amount of space required per minute of audio content	64 kbps	0.5 MB	96 kbps	0.75 MB	128 kbps	1 MB	164 kbps	1.25 MB	192 kbps	1.75 MB
Bitrate	Approximate amount of space required per minute of audio content												
64 kbps	0.5 MB												
96 kbps	0.75 MB												
128 kbps	1 MB												
164 kbps	1.25 MB												
192 kbps	1.75 MB												

Can I update the firmware on the Rio Cali?

- Yes. If available, firmware for your Rio can be downloaded online.

Note: Quit all applications before running the firmware update. While running the firmware update, do not close the program, turn off the player, or unplug the USB cable.

Downloading the update

- 1 Click on the following link: [Firmware Upgrade](#).
- 2 Click on the link to the Rio Cali.
- 3 Locate **UPDATES** and click **Firmware**.
Select and download the latest software. Download the software that is specific to the operating system you use on your PC:

- *.exe (Windows)
- *.hqx (Mac)
- *.zip (Windows; must use WinZip to open)
- *.txt (All operating systems—a text file including update information and instructions.)

Installing the update (PC)

- 1 Connect the player to your computer with the USB cable.
- 2 Turn the player on.

Waiting will display on the player screen.

- 3 Double-click the file that you downloaded from the Rio website.
The update should take approximately 30 seconds to load.

Installing the update (Mac)

- 1 Connect the player to your computer with the USB cable.
- 2 Turn the player on.
- 3 Double-click the iTunes icon.
- 4 Select the Rio player icon.
- 5 Click **Options** on the iTunes window. The Rio Settings window is displayed
- 6 Click **Upgrade Firmware** on the Rio Settings window.
- 7 Select the firmware update you downloaded from the website.
- 8 Click **Open**.

:: Glossary of Digital Audio Terms

Bass

Bass is the particular low-range area of the sound spectrum where low musical notes and sounds are located. Increasing the bass value will make the low vocals and drums more prominent in your music. You can select the amount of bass in your music by selecting various [Equalizer](#) options.

Bitrate

Bitrate denotes the number of bits per second used by a digital music file. The size and quality of a compressed digital audio file is determined by the bitrate used when encoding the file. Generally, the higher the bitrate used, the higher the sound quality, and the larger the file size. For example, a bitrate of 96kbps (96,000 bits per second) is generally thought of as "CD quality" for WMA audio files, and takes up about 0.75 megabytes (MB) per minute of music. At a 64kbps bitrate, the sound quality of WMA is similar to that of an FM radio signal, but approximately two minutes of music will fit in 1MB of space.

Codec

Depending on the context and kind of technology involved, codec can be defined as a compressed digital audio file format (like MP3, WMA, etc.), a "coding/decoding" chip used to translate between digital and analog transmissions (used in modems), or a compression/decompression algorithm. Codecs compress audio data into a file, often for efficient transmission over a network, and then decode it for playback. While all the codecs perform similar compression of digital audio, there are differences in the technology.

The Rio Cali supports the following digital audio codecs:

- MP3
- WMA

Firmware

Firmware is the read-only software that is installed on the player. Like software it can be updated, but unlike software it can never be deleted from the player.

Gain

Gain is a measurement of the amplitude of all frequency ranges. Gain adjustments boost or reduce frequencies to provide a more desirable audio output.

ID3 Tag

The ID3 tag is the part of the encoded MP3 or WMA file that contains information about the digital music file such as song title, artist, album title, encoding bitrate, track time duration, and so on. ID3 tag information is displayed on the Album/Artist/Track title line on the player's LCD.

MP3

MP3 is short for Moving Pictures Experts Group Audio Layer 3. MP3 is the most well known compressed digital audio file format. This format allows for near "CD quality" sound, but at a fraction of the size of normal audio files. MP3 conversion of an audio track from CD-ROM can reduce the file size by approximately a 12:1 ratio with virtually no perceptible loss in quality. MP3 compression removes the redundant and irrelevant parts of a sound signal that the human ear doesn't hear. This digital sound encoding and compression process was developed by the Fraunhofer Institute for Integrated Circuits and Thomson Multimedia.

Rip and Encode

Rip and encode refers to the process of extracting audio from a music CD (ripping) and encoding it into a compressed digital audio format like MP3 or WMA.

Synchronize

Rio Music Manager can automatically (or manually) delete old content, transfer new audio content, and keep the content on your Rio Cali fresh and dynamic. Rio Music Manager must be open for synchronization to occur.

Treble

Treble notes occupy the higher portion of the sound spectrum. Increasing the treble value will raise the levels of the high sounds in your music files. You can select the amount of treble in your music by selecting various [Equalizer](#) options.

VBR

Variable Bitrate (VBR) encoding converts tracks at a variable rate, using higher bitrate encoding for complex portions and lower bitrate encoding for pauses in songs.

WMA

Windows Media Audio (WMA) is a compressed audio format created by Microsoft as an alternative to MP3. The WMA codec offers greater file compression than the MP3 codec, enabling storage of more digital audio tracks in the same amount of space when compared to MP3s at the same level of quality.

:: Limited Warranty and Software License

Warranty

Digital Networks North America, Inc. warrants that your product will be free from defects in materials and workmanship for a period of ninety (90) days from the date of original retail purchase. Digital Networks North America, Inc. warrants refurbished products, marked and sold as such, for thirty (30) days from the original purchase date. This warranty is extended to the original end user purchaser only and is not assignable or transferable to any other party.

If you discover a defect covered by this warranty, Digital Networks North America, Inc. will repair or replace the product at our sole discretion using new or remanufactured product or components. Digital Networks North America, Inc.'s liability is limited solely to the repair or replacement of the defective product. If Digital Networks North America, Inc. cannot reasonably repair or replace the defective product then Digital Networks North America, Inc. may, at its sole discretion, refund the current suggested retail price for the product. Digital Networks North America, Inc. warrants any replaced or repaired product for a period of thirty (30) days from shipment, or through the end of the original warranty period, whichever is longer.

Warranty Service

To obtain service under this warranty, you must contact a Digital Networks North America, Inc. Customer Care Center within the applicable warranty period to receive a warranty service authorization. You will be required to provide a dated original proof of purchase. Products shipped to Digital Networks North America, Inc. must be shipped postage-paid and packaged appropriately for safe shipment. Digital Networks North America, Inc. is not responsible for products received without a warranty service authorization and may be rejected. Repaired or replacement products will be shipped to you at Digital Networks North America, Inc.'s expense. All products or parts that are replaced become the property of Digital Networks North America, Inc.

Scope of and Limitation on Warranty

This warranty does not cover damage caused by abuse, misuse, unauthorized attempts to open, modify, or repair the product, moisture, extreme heat or cold, corrosive environments, shipping, or high voltage surges from external sources such as power line, telephone line, or connected equipment. This warranty does not cover wear and tear on covers, housing or wiring. This warranty also does not apply to any product with an altered or defaced serial number. Digital Networks North America, Inc.'s liability is limited to the repair or replacement of this product. In no event will Digital Networks North America, Inc. be liable for any amount greater than the currently suggested retail price of this product. We will not be liable to you or anyone else for any damages that result from the failure of this product or from the breach of any express or implied warranties. These include damage to other equipment, lost data, lost profits, or any consequential, incidental, or punitive damages. This written warranty represents the entire warranty agreement between Digital Networks North America, Inc. and you. This warranty is given in lieu of all other warranties, express or implied, including without limitation implied warranties of merchantability and fitness for a particular purpose. This warranty is limited to the term specified above. No warranties, either express or implied, will apply after this period. This warranty may not be altered in any way other than in writing by an officer of Digital Networks North America, Inc. This warranty gives you specific legal rights and you may also have other rights, which vary, from state to state. Some states limit what warranties may be excluded as well as how long an implied warranty lasts, so the above limitation may not apply to you.

:: FCC and Industry Canada Compliance

Federal Communications Commission (FCC)

This device complies with Part 15 of the FCC Rules. Operation is subject to the following two conditions:

- 1 This device may not cause harmful interference, and
- 2 This device must accept any interference received, including interference that may cause undesired operation.

This equipment has been tested and found to comply with the limits for a Class B digital device, pursuant to Part 15 of the FCC Rules. These limits are designed to provide reasonable protection against harmful interference in a residential installation. This equipment generates, uses and can radiate radio frequency energy and, if not installed and used in accordance with the instructions, may cause harmful interference to radio communications. However, there is no guarantee that interference will not occur in a particular installation. If this equipment does cause harmful interference to radio or television reception, which can be determined by turning the equipment off and on, the user is encouraged to try to correct the interference by one or more of the following measures:

- Reorient or relocate the receiving antenna.
- Increase the separation between the equipment and receiver.
- Connect the equipment into an outlet on a circuit different from that to which the receiver is connected.
- Consult the dealer or an experienced radio/TV technician for help.

Industry Canada

This Class B digital apparatus complies with Canadian ICES-003.

Cet appareil numérique de la classe B est conforme à la norme NMB-003 du Canada.

:: Safety

Warning

TO REDUCE THE CHANCE OF SHOCK OR INJURY, DO NOT USE or OPERATE THIS DEVICE IN OR NEAR WATER OR WET LOCATIONS.

CAUTION

RISK OF EXPLOSION, DAMAGE OR BATTERY LEAKAGE IS POSSIBLE IF BATTERY IS REPLACED INCORRECTLY OR BY AN INCORRECT TYPE. NEVER ATTEMPT TO CHARGE A NON-RECHARGEABLE ALKALINE BATTERY. DISPOSE OF USED BATTERIES ACCORDING TO INSTRUCTIONS OR LOCAL LAWS.

Use of headphones while operating a vehicle is not recommended and is unlawful in some states and areas. Be careful and attentive while driving. Stop operation of the player if you find it disruptive or distracting while operating any type of equipment. Listening to music at full power over extended periods of time can be damaging to the hearing of the user.

Index

Symbols

+/- control 21

A

about 43
 accessories 9
 advanced features 27

B

backlight 38
 basic operations 16
 bass
 definition 48
 battery
 indicator 46
 installation 4
 bitrate definition 48
 bookmarks 35
 buttons and controls 21

C

codec
 definition 48
 MP3 49
 WMA 49
 copy tracks 17
 contrast 38
 controls 21
 customer service
 information 44

D

date view 6
 display 38

E

earphones 8
 encoding 17
 equalizer 31

F

firmware 48
 forward 2, 21
 FM control 25
 FM tuner mode 25
 frequently asked ques-
 tions 45

G

getting started 1
 glossary 48

H

help 44

I

ID3 tag definition 49
 iTunes 15

L

language 40

liquid crystal display
 LCD 5
 limited warranty 50
 lock setup 42

M

MP3 49

P

play all 24
 play/pause 2, 21
 playback 30
 playlists 24
 power button 2
 power settings 36
 preset mode 26

R

RealOne Player 13
 regulatory information
 52
 resume 37
 reverse 2, 21
 Rio Music Manager 12
 ripping and encoding 49

S

settings 29
 stop 2, 21
 store preset 26

stopwatch 28

T

technical support 44
 time 39
 time code view 6
 track format view 6
 transferring tracks
 iTunes 20
 RealOne Player 19
 Rio Music
 Manager 18
 treble
 definition 49
 troubleshooting 44
 tuner 41

U

upgrading firmware 47
 usb 8

V

variable bitrate 49
 volume +/- 2, 21

W

warranty 50
 WMA 49

Riö

2600 San Tomas Expy.
Santa Clara, CA 95051-0953

Free Manuals Download Website

<http://myh66.com>

<http://usermanuals.us>

<http://www.somanuals.com>

<http://www.4manuals.cc>

<http://www.manual-lib.com>

<http://www.404manual.com>

<http://www.luxmanual.com>

<http://aubethermostatmanual.com>

Golf course search by state

<http://golfingnear.com>

Email search by domain

<http://emailbydomain.com>

Auto manuals search

<http://auto.somanuals.com>

TV manuals search

<http://tv.somanuals.com>