

another innovation from

Riō®

www.rioaudio.com

Riō[®] Fuse

User's Guide



[Table of Contents](#)

[Getting Started](#)

[Connections](#)

[Software Setup](#)

[Basic Operations](#)

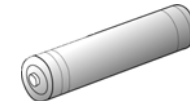
[Advanced Features](#)

[Help](#)

[Index](#)

Package Contents

- AAA-Battery
- Earphones
- Installation CD
- Quick Start Poster
- Rio Fuse



Copyright/Trademarks

© 2003 Digital Networks North America, Inc. All rights reserved. Digital Networks North America, Inc. shall not be liable for any errors contained herein or for any damages arising out of or related to this document or the information contained herein, even if Digital Networks North America has been advised of the possibility of such damages. This document is intended for informational and instructional purposes only. Digital Networks North America, Inc. reserves the right to make changes in the specifications and other information contained in this document without prior notification. Digital Networks North America, Inc. disclaims any obligation to update the information contained herein.

Rio® is a registered trademark of Digital Networks North America, Inc.

RealOne is a registered trademark of RealNetworks, Inc.

This product is iTunes ready. iTunes is provided by Apple Computer, Inc. Copyright © 2001 Apple Computer, Inc. All rights reserved. iTunes is a trademark of Apple Computer, Inc. Mac and the Mac logo are trademarks of Apple Computer, Inc. registered in the United States and other countries.

Microsoft, Windows Media and the Windows Logo are trademarks or registered trademarks of Microsoft Corporation in the United States and/or other countries.

All other product names may be trademarks of the companies with which they are associated.

P/N 41000863-002

Riō



Table of Contents

- Package Contents ii
- Copyright/Trademarks ii

1 - Getting Started

Welcome 1

- Learning More 1

Tour of the Rio Fuse 2

LCD Overview 4

- Playback Mode 4
- Menu Mode 4
- Date View 5
- Time Code View 5
- Track Format View 5
- Play Screens 5

2 - Connections

Basic Connections 6

- Battery 6
- Earphones 6
- USB 6
- Additional Accessories 7

3 - Software Setup

Windows 9

- Rio Music Manager 10
- RealOne Player 11

Mac 12

- iTunes 13

4 - Basic Operations

Basic Operations 14

Copy 15

- Copying Tracks with Rio Music Manager 15

Transfer 16

- Rio Music Manager 16
- RealOne Player 17
- iTunes 18

Control 19

Play 20

- Play All 21
- Play Track 21
- Playlists 21

5 - Advanced Features

Advanced Features 22

Equalizer 23

- Bass/Treble 24
- Normal 25
- Rock 25
- Jazz 26
- Classical 26
- Pop 27
- Trance 27

Bookmarks 28

Stopwatch 29

Settings 30

- Playback.....31
- Power.....32
- Resume.....33
- Display.....34
- Time.....35
- Language.....36
- Lock Setup.....37
- About.....38**

6 - Help

- Troubleshooting.....39**
- Customer Service Information.....39
- Frequently Asked Questions.....40

- Glossary of Digital Audio Terms...43**
- Bass.....43
- Bitrate.....43
- Codec.....43
- Firmware.....43
- ID3 Tag.....44
- MP3.....44
- Rip and Encode.....44
- Synchronize.....44
- Treble.....44
- VBR.....44
- WMA.....44

- Limited Warranty and Software License.....45**
- Warranty.....45
- Warranty Service.....45
- Scope of and Limitation on Warranty ..46

FCC and Industry Canada Compliance

- 47
- Federal Communications Commission (FCC) 47
- Industry Canada.....47
- Safety.....48**
- Warning.....48
- CAUTION.....48

Chapter 1

Getting Started

:: Welcome

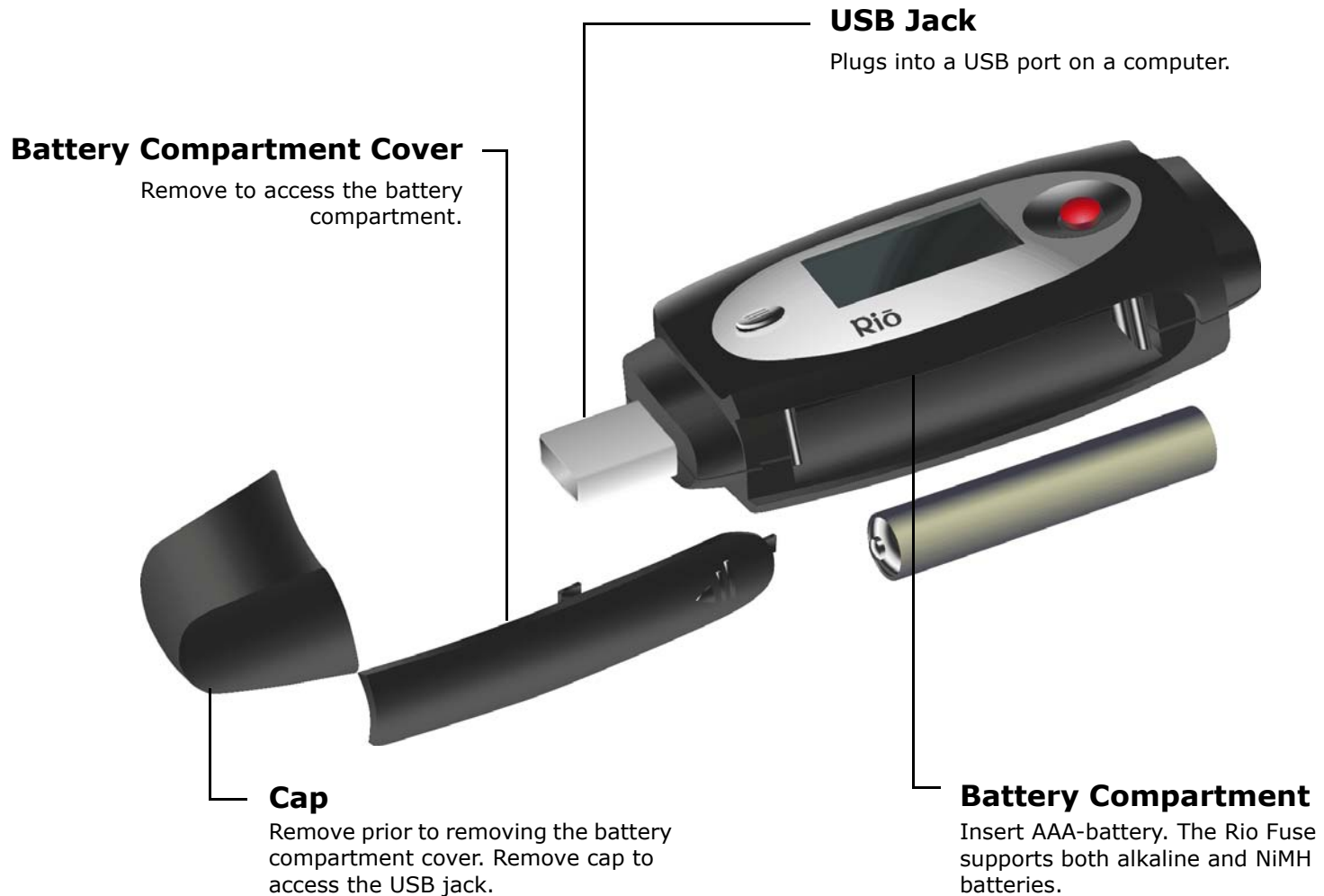
Thank you for purchasing the Rio Fuse. The Rio Fuse is a portable digital audio player that provides many hours of MP3 and WMA playback. The Rio Fuse includes a AAA-battery, earphones, a Quick Start poster, and an installation CD.

Learning More

- Refer to the Quick Start poster for the basics on how to set up and start using the Rio Fuse.
- Visit the Rio website at www.rioaudio.com.

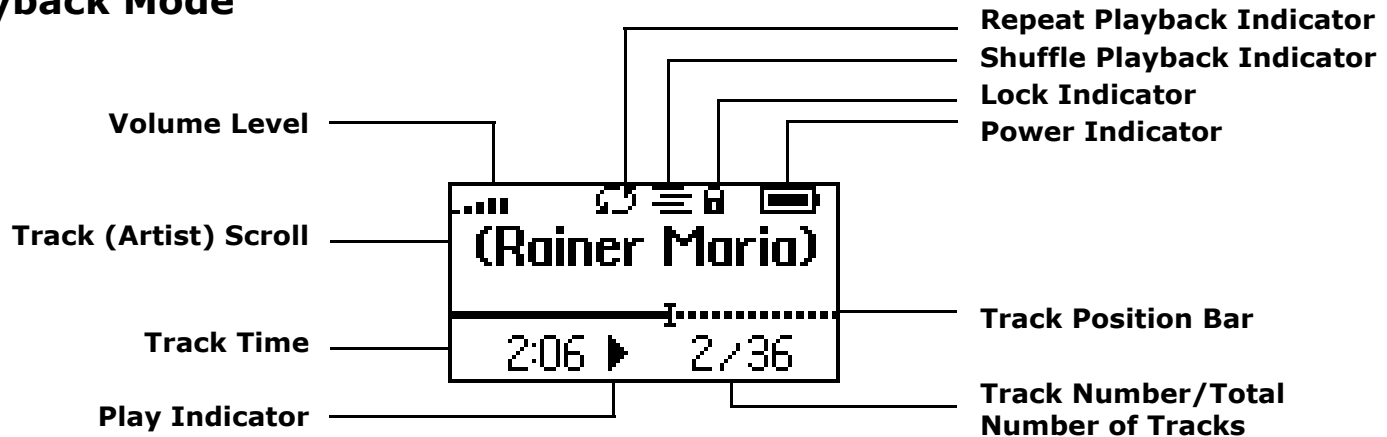
:: Tour of the Rio Fuse





:: LCD Overview

Playback Mode



Menu Mode



Time Code View



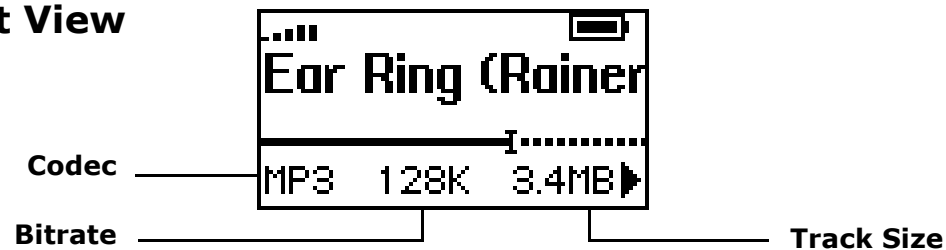
Play Screens

Press the RioStick to cycle through Time Code, Track Format, and Date Views.

Date View



Track Format View



Chapter 2

Connections

:: Basic Connections

The Rio Fuse must use a AAA-battery and will frequently be connected to earphones and your computer's USB port.

Battery

The Rio Fuse uses a single AAA-battery that can provide many hours of use. The [Cap](#) and the [Battery Compartment Cover](#) must be removed before a battery can be installed.

Earphones

Connect the supplied earphones to the **EARPHONES** port on the top of the player.

USB

The Rio Fuse's USB jack is designed to plug directly into the USB port on a computer. The Rio Fuse must be connected to a computer's USB port to transfer music or files to and from the player.

USB Detection with the Windows Device Driver

USB connectivity is ready to work immediately after [Rio Music Manager](#) has been installed.

If for any reason the Windows Device Driver Wizard is displayed after the USB cable has been plugged into both the Rio Fuse and the computer, please follow these steps:

- 1 Confirm the Rio installation CD is in the computer's CD-ROM drive.
- 2 Check the **CD-ROM Drives** box when the Windows Device Driver Wizard requests the location of the Rio Fuse drivers.
- 3 Click **Next** and follow the Windows Device Driver Wizard instructions.



Additional Accessories

Get the most out of your Rio with additional accessories available online at the Rio [website](#). Some of the most popular accessories include the following:

- **Rio Car Stereo Adapter**

Upgrade your car stereo for hundreds of dollars less than buying a new MP3 CD player. The Rio car stereo adapter lets you play your favorite music in any vehicle equipped with a standard cassette deck.



Chapter 3

Software Setup

Software Setup

Software found on the Rio installation disc must be installed on a computer before it will recognize the Rio Fuse. Rio Music Manager must be installed on computers that use the Windows operating systems. iTunes must be installed on computers that use the Mac operating system.

[Windows](#)

[Mac](#)

:: Windows

Follow these instructions to load software that enables a computer to recognize the Rio Fuse. The installation also loads [Rio Music Manager](#).


- 1 Place the installation CD label-side up into the computer's CD-ROM drive.

The Rio installation software launches automatically.


- 2 Click **Rio Music Manager INSTALL NOW** (required) and follow the on-screen instructions. Additionally, one may click **RealOne Player INSTALL NOW** and follow its installation instructions as well.
- 3 If prompted, reboot the computer when the installation is complete.



- If Rio installation software does not display automatically, follow these steps to begin the installation manually:

- 4 Double-click the **My Computer** icon,  , on the Windows desktop.

- 5 Double-click the **CD-ROM** icon,  ,

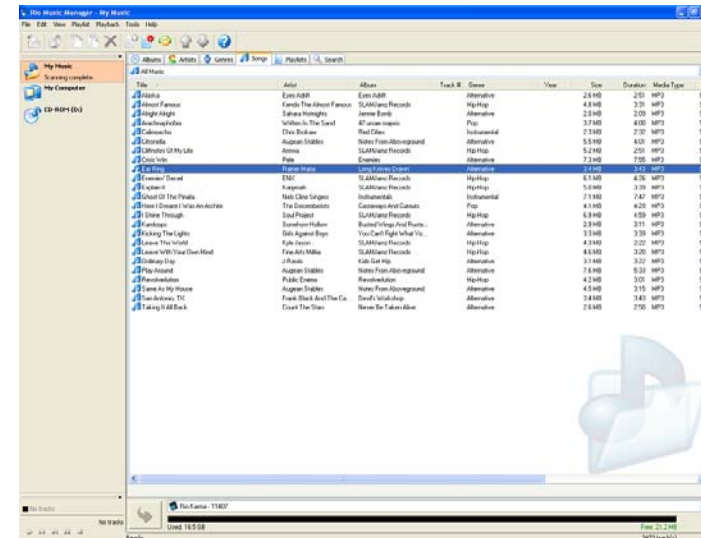
- 6 Double-click the **Install** icon,  .

- 7 Go to Step 2.

Rio Music Manager

Rio Music Manager is an all-in-one solution that can rip, encode, and manage entire collections of digital audio tracks. Rio Music Manager provides the following capabilities:

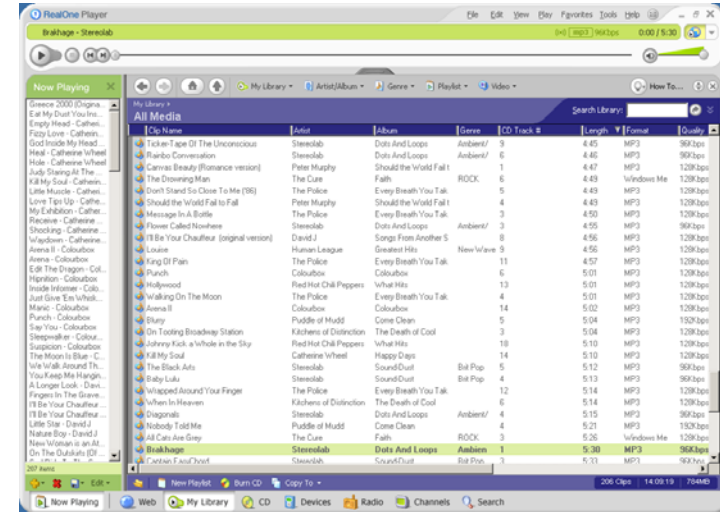
- Copy (**Rip and Encode**) audio CDs into compressed digital audio formats. Rio Music Manager encodes WMA files by default and MP3 via an optional upgrade pack.
- Automatically **Synchronize** the music collection on your computer with your Rio Fuse.
- Edit **ID3 Tag** and **WMA tags** on digital audio tracks.
- Organize and manage digital audio tracks on your computer and Rio Fuse.
- Search for tracks on your computer and Rio Fuse.
- Create custom playlists.
- Transfer tracks from your computer to Rio Fuse.



RealOne Player

The RealOne player is included on the Rio installation CD and provides full speed CD ripping and encoding features perfect for the digital audio enthusiasts. Support for the RealOne player can be found [here](#). RealOne offers the following features:

- Copy ([Rip and Encode](#)) your audio CDs into compressed digital audio formats including MP3 and WMA.
- Organize digital audio tracks on your computer.
- Search for tracks on your computer or on the Internet.
- Create custom CDs.
- Transfer tracks from your computer to the Rio Fuse.



:: Mac

Follow these instructions to load the software that enables your Macintosh to recognize the Rio Fuse. The installation also loads iTunes music management software.

- 1 Place the software CD label-side up into the computer's CD-ROM drive.

Double-click the Rio icon,  , on your computer's desktop.



Rio



Install_OSX

- 2 Double-click the **Install OSX** icon,  .

The Rio Software Screen will display.

- 3 Click **Install**.
- 4 Follow the on-screen instructions to install the software.
- 5 If prompted, reboot the computer when the installation is complete.



- *Rio installation software only supports the OSX operating system.*

iTunes

Apple's iTunes is standard software included with every new Mac. Upgrading from older versions of iTunes to the most current version of iTunes is absolutely free. iTunes is available [online](#). Support for iTunes can be found [here](#). iTunes offers the following features:

- Save ([Rip and Encode](#)) your audio CDs into compressed digital formats including MP3s.
- Organize digital audio tracks on your computer.
- Search for tracks on your computer.
- Create custom CDs.



Chapter 4

Basic Operations

:: Basic Operations

Enjoying music on the Rio Fuse is easy. Basic operations of the Rio Fuse include:

- [Copy](#)
- [Transfer](#)
- [Control](#)
- [Play](#)

:: Copy

Copying Tracks with Rio Music Manager

Copying tracks from Audio CDs involves two steps commonly known as ripping and encoding. Ripping and encoding refers to the process of ripping (copying) audio from a CD and encoding (saving) the audio content into a compressed digital audio format like MP3 or WMA.

- 1 Launch the Rio Music Manager.
- 2 Insert an Audio CD into your CD-ROM drive.
- 3 Click the CD-ROM icon on the Rio Music Manager Device List.
- 4 Use any of the following techniques to select tracks:

Track Type	Technique
Single track.	<ul style="list-style-type: none">• Left-click the track.
Multiple tracks.	<ul style="list-style-type: none">• Press SHIFT+Click or CTRL+Click.
All tracks.	<ul style="list-style-type: none">• Press CTRL+A.
No tracks.	<ul style="list-style-type: none">• Press CTRL+N.
Every track except for the currently selected tracks.	<ul style="list-style-type: none">• Select Edit, Invert Selection.

- 5 Click  to begin copying tracks to your computer.



:: Transfer

Rio Music Manager

Transferring tracks from the PC to the Rio Fuse with the Rio Music Manager involves selecting tracks, then transferring them onto the player.

- 1 Launch the Rio Music Manager.
- 2 Click **My Music** in the left frame to access tracks. Rio Music Manager will scan the computer's hard drives for digital audio files that are compatible with the Rio Fuse player. Files are automatically categorized by album title and displayed in the Track List.
- 3 Select tracks within a category of tracks. Categories include Albums, Artists, Genres, Songs, and Playlists.

For example, if you wish to copy all tracks from a favorite artist onto the player, click the Artists tab and then use any of the techniques in **Step 4** to select the desired tracks.

- 4 Use any of the following techniques to select files:

File type	Technique
Single track, album, or artist.	<ul style="list-style-type: none"> • Left-click the track, album, or artist.
Multiple tracks, albums, and/or artists.	<ul style="list-style-type: none"> • Press SHIFT+Click or CTRL+Click.
All tracks, albums, and artists.	<ul style="list-style-type: none"> • Press CTRL+A.
No tracks, albums, or artists.	<ul style="list-style-type: none"> • Press CTRL+N.
Every track except for the currently selected tracks.	<ul style="list-style-type: none"> • Select Edit, Invert Selection.

- 5 After the tracks have been selected they can be copied to the Rio Fuse by clicking



RealOne Player

- 1 Launch RealOne Player.
- 2 Connect the player to a USB port on the computer.
- 3 Power the Rio Fuse on.
- 4 Click **DEVICES** at the bottom of the RealOne Player window.

The Devices window is displayed.

- 5 Double-click **Rio Fuse**.
- 6 Click **ADD CLIPS** in the command bar at the bottom of the RealOne Player window.

The Add Clips window is displayed.



- *Tracks can be added from **My Library** by selecting tracks to be transferred and clicking **COPY TO** on the **My Library** command bar.*

- 7 Select the tracks to be transferred to the Rio Fuse. Click **Add Clip** to queue the tracks to be transferred and close the Add Clips window.
- 8 Click **TRANSFER** in the command bar at the bottom of the window to begin transferring the selected tracks to the Rio Fuse. Tracks labeled **Will Not Fit** will not be transferred. **Will Not Fit** status indicates that the total size of the tracks being transferred to the Rio Fuse exceeds the available memory.



- *Only MP3 and WMA files can be transferred. An error message will be displayed if unsupported files are transferred unsuccessfully to the player.*

iTunes

- 1 Launch iTunes.
- 2 Connect the player to a USB port on the computer.
- 3 Power the Rio Fuse on.
- 4 Click **Library** in the iTunes Source frame.
- 5 Select tracks to transfer.
- 6 Drag and drop selected tracks to the **Rio Fuse Player** in the iTunes Source frame.



- *iTunes will only refresh the audio contents located on the Rio Fuse Player after all selected tracks have been transferred.*

:: Control

The controls on the Rio Fuse work as follows:

- **POWER**
Press to turn the player on. Press and hold to turn the player off.
- **MENU**
Press to enter Menu mode. In Menu mode, press to return to Playback mode.
- **RIOSTICK (Press)**
In Playback mode, press to cycle through [Play Screens](#). In Menu mode, press to select menu options.
- **RIOSTICK (Movement)**
Move to control menu navigation. In Playback mode, move to control **PLAY/PAUSE**, **STOP**, **FORWARD**, and **REVERSE** playback functions.
- **PLAY/PAUSE**
Select with the RioStick to play or pause playback.
- **FORWARD** and **REVERSE**
Select with the RioStick to skip to the next or previous track. Select and hold to scan forward or reverse through a track.
- **STOP**
Select with the RioStick to stop playback.
- **VOLUME +** and **-**
Press to adjust volume level.
- **LOCK/UNLOCK**
Slide into the **LOCK** position to disable buttons and prevent accidental operation.



Controls

Locations of all controls can be found on page 2 and 3.

:: Play

In Playback mode any track or preset customized playlist can be played within a matter of seconds.



[Play All](#)
[Play Track](#)
[Playlists](#)



- If the Rio Fuse does not power on after **POWER** has been pressed, check the **LOCK/UNLOCK** switch and confirm it is in the **UNLOCK** position.

Play All

Follow these steps to play all tracks on the Rio Fuse:

- 1 Press **MENU**.
- 2 Select **Play Music**.
- 3 Press **RIOSTICK**.
- 4 Select **Play All**.
- 5 Press **RIOSTICK** to begin playback.

Play Track

Follow these steps to play a specific track on the Rio Fuse:

- 1 Press **MENU**.
- 2 Select **Play Music**.
- 3 Press **RIOSTICK**.
- 4 Select **Play Track**.
- 5 Press **RIOSTICK**.
- 6 Select a track to play.
- 7 Press **RIOSTICK** to begin playback.

Playlists

Follow these steps to play a specific playlist on the Rio Fuse:

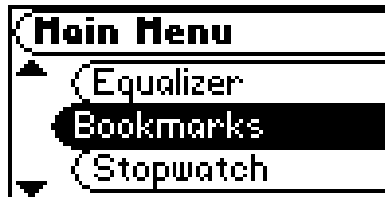
- 1 Press **MENU**.
- 2 Select **Play Music**.
- 3 Press **RIOSTICK**.
- 4 Select **Playlists**.
- 5 Press **RIOSTICK**.
- 6 Select a playlist to play.
- 7 Press **RIOSTICK** to begin playback.

Chapter 5

Advanced Features

:: Advanced Features

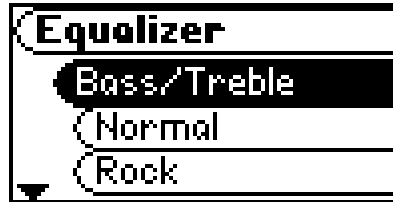
Advanced features of the Rio Fuse include:



[Equalizer](#)
[Bookmarks](#)
[Stopwatch](#)
[Settings](#)
[About](#)

:: Equalizer

The sound of tracks played on the Rio Fuse can be adjusted using various preset and customizable equalizer options. Equalizer options include:



[Bass/Treble](#)

[Normal](#)

[Rock](#)

[Jazz](#)

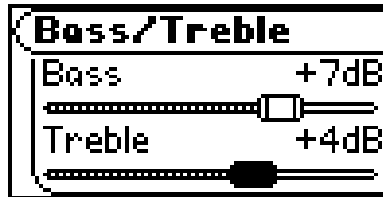
[Classical](#)

[Pop](#)

[Trance](#)

Bass/Treble

The **Bass & Treble** feature can be used to adjust **bass** and **treble** a total of 28 decibels, from -14dB to +14dB.



- 1 Press **MENU**.
- 2 Select **Equalizer**.
- 3 Press **RIOSTICK**.
- 4 Select **Bass & Treble**.
- 5 Press **RIOSTICK**.
- 6 Move **RIOSTICK** up or down to select Bass or Treble options. Move **RIOSTICK** left or right to adjust Bass or Treble settings.
- 7 Press **RIOSTICK** to confirm settings and return to playback mode.

Bass & Treble options include:

- **Bass**
Adjusts the low end of the sound spectrum from **-14db** to **+14db**.
- **Treble**
Adjusts the high end of the sound spectrum from **-14db** to **+14db**.

Normal

Select the **Normal** equalizer option to apply no equalizer adjustments to audio content on the Rio Fuse.

- 1 Press **MENU**.
- 2 Select **Equalizer**.
- 3 Press **RIOSTICK**.
- 4 Select **Normal**.
- 5 Press **RIOSTICK** to set the **Normal** equalizer option and return to playback mode.

Rock

Select the **Rock** equalizer option to change the sound of tracks according to the **Rock** preset settings.

- 1 Press **MENU**.
- 2 Select **Equalizer**.
- 3 Press **RIOSTICK**.
- 4 Select **Rock**.
- 5 Press **RIOSTICK** to set the **Rock** equalizer option and return to playback mode.

Jazz

Select the **Jazz** equalizer option to change the sound of tracks according to the **Jazz** preset settings.

- 1 Press **MENU**.
- 2 Select **Equalizer**.
- 3 Press **RIOSTICK**.
- 4 Select **Jazz**.
- 5 Press **RIOSTICK** to set the **Jazz** equalizer option and return to playback mode.

Classical

Select the **Classical** equalizer option to change the sound of tracks according to the **Classical** preset settings.

- 1 Press **MENU**.
- 2 Select **Equalizer**.
- 3 Press **RIOSTICK**.
- 4 Select **Classical**.
- 5 Press **RIOSTICK** to set the **Classical** equalizer option and return to playback mode.

Pop

Select the **Pop** equalizer option to change the sound of tracks according to the **Pop** preset settings.

- 1 Press **MENU**.
- 2 Select **Equalizer**.
- 3 Press **RIOSTICK**.
- 4 Select **Pop**.
- 5 Press **RIOSTICK** to set the **Pop** equalizer option and return to playback mode.

Trance

Select the **Trance** equalizer option to change the sound of tracks according to the **Trance** preset settings.

- 1 Press **MENU**.
- 2 Select **Equalizer**.
- 3 Press **RIOSTICK**.
- 4 Select **Trance**.
- 5 Press **RIOSTICK** to set the **Trance** equalizer option and return to playback mode.

:: Bookmarks

Perfect for multiple users who use the same Rio Fuse, bookmarks store specific player settings, including the current running order, the current track, the current time position of the track, the repeat setting, and the shuffle setting. Users can save these settings in a bookmark and restore them whenever they use the player.



- 1 Press **MENU**.
- 2 Select **Bookmarks**.
- 3 Press **RIOSTICK**.
- 4 Select a Bookmark option.
- 5 Press **RIOSTICK**.

Bookmark options include:

- **Select**
Use **RIOSTICK** to select a bookmark. Press **RIOSTICK** to restore the selected bookmark settings.
- **Set**
Press **RIOSTICK** to set a bookmark.
- **Delete**
Use **RIOSTICK** to select a bookmark. Press **RIOSTICK** to delete the selected bookmark.



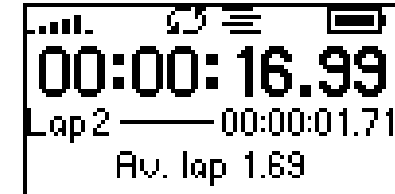
- *The Rio Fuse automatically saves user settings when it is turned off. These settings are automatically restored when the Rio Fuse is turned on. Settings saved automatically are not saved as a bookmarks.*

:: Stopwatch

Use the stopwatch to keep track of time-sensitive events while listening to music.

- 1 Press **MENU**.
- 2 Select **Stopwatch**.
- 3 Press **RIOSTICK**.

Lap statistics are displayed at the bottom of the **Stopwatch** screen. When a new lap is set, the difference, either faster (-) or slower (+) between new lap times and the average laptime is displayed for a few moments.



Average Lap Time

When in **Stopwatch** mode, the controls work in the following ways:

- **MENU**

Press to return to the **Main Menu**.



- *Pressing **MENU** and using other player functions will not turn the timer off. The timer will continue to run until the RioStick is moved into the Up position (**PLAY/PAUSE**) while in **Stopwatch** mode.*

- **RIOSTICK** (Up)

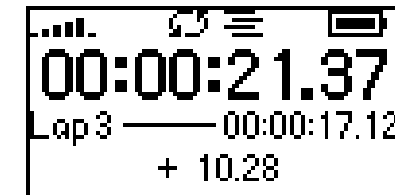
Press to start and stop the timer.

- **RIOSTICK** (Press)

Press to set a lap time. Press and hold to return to single lap display. Multiple laps and lap averages will be lost.

- **RIOSTICK** (Down)

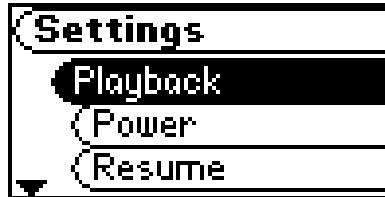
Press to reset timer.



Lap Difference

:: Settings

Rio Fuse settings include:



[Playback](#)

[Power](#)

[Resume](#)

[Display](#)

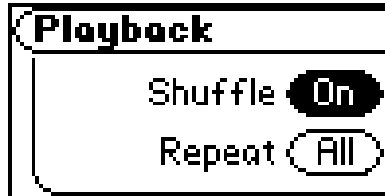
[Time](#)

[Language](#)

[Lock Setup](#)

Playback

Various playback settings can be set to modify the way the Rio Fuse plays tracks. Tracks can be shuffled at random, or repeated continuously.



- 1 Press **MENU**.
- 2 Select **Settings**.
- 3 Press **RIOSTICK**.
- 4 Select **Playback**.
- 5 Press **RIOSTICK**.
- 6 Select **Playback** options.
- 7 Press **RIOSTICK** to apply settings and return to **Playback** mode.

Playback options include:

- **Shuffle**
Set selected tracks to play in standard or random order. Settings include **Off** (the default setting) and **On**.
- **Repeat**
Set selected tracks to repeat playback of all tracks or the current track. Settings include **Off** (the default setting), **All**, and **One**.

Power

By adjusting the **Power** settings the player can conserve energy and extend the amount of playback time during each battery charge.



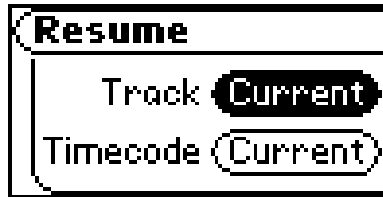
- 1 Press **MENU**.
- 2 Select **Settings**.
- 3 Press **RIOSTICK**.
- 4 Select **Power**.
- 5 Press **RIOSTICK**.
- 6 Select **Battery** and **Pwr Save** options.
- 7 Press **RIOSTICK** to apply settings and return to **Playback** mode.

Power options include:

- **Battery**
Although the Rio Fuse ships with an Alkaline battery, it can also use rechargeable Nickel-Metal Hydride (NiMH) batteries. The **Battery** option must be set to the same battery type that is being used or the battery indicator will not display the correct amount of battery life. Settings include **Alkaline** (the default setting) and **NiMH**.
- **Pwr Save**
Set the player to turn off after being idle for a specific number of minutes. Settings include **1m**, **5m** (the default setting), **10m**, **30m**, and **Never**.

Resume

Use the options in the **Resume** menu to set the track that the player will play whenever the player restarts.



- 1 Press **MENU**.
- 2 Select **Settings**.
- 3 Press **RIOSTICK**.
- 4 Select **Resume**.
- 5 Press **RIOSTICK**.
- 6 Select **Resume** options.
- 7 Press **RIOSTICK** to apply settings and return to **Playback** mode.

Resume options include:

- **Track**
Set the player to begin playback of the last track played before shutdown or the first track in the running order when the player restarts. Settings include **Current** (the default setting) and **First**.
- **Timecode**
Set the player to begin playback of the last track played at the point the track was at during shutdown or at the start of the track. Settings include **Current** (the default setting) and **Start**.

Display

Use the **Display** menu to adjust backlight and contrast settings.



- 1 Press **MENU**.
- 2 Select **Settings**.
- 3 Press **RIOSTICK**.
- 4 Select **Display**.
- 5 Press **RIOSTICK**.
- 6 Adjust **Backlight** options and **Contrast** settings.
- 7 Press **RIOSTICK** to apply settings and return to **Playback** mode.

- **Backlight**

Set the backlight on the player to shut itself off after a specific number of seconds. Settings include **Off**, **2s**, **5s**, (the default setting) **10s**, **20s**, and **On**. **On** sets the backlight to remain lit constantly.



- *To conserve battery life, the **On** setting should rarely be used.*

- **Contrast**

Move **RIOSTICK** to control the contrast slider. Use the contrast slider to set how light or dark the images on the LCD will appear. Setting the contrast too high will result in washed out images. Setting the contrast too dark will result in images that are too dark to read.

Time

Use the options in the **Time** menu to set the player's internal clock.



- 1 Press **MENU**.
- 2 Select **Settings**.
- 3 Press **RIOSTICK**.
- 4 Select **Time**.
- 5 Press **RIOSTICK**.
- 6 Select **Set Time**, **Set Date**, or **Time/Date Mode** options.
- 7 Press **RIOSTICK**.
- 8 Adjust options.
- 9 Press **RIOSTICK** to apply settings and return to Playback mode.

Time settings include:

- **Set Time**
Options include **Hour**, **Minute**, and **AM / PM**.
- **Set Date**
Options include **Month**, **Day**, and **Year**.
- **Time/Date Mode**
Options include **12 hour** (the default setting) and **24-hour** time formats and **USA** (the default setting), **Europe**, and **Japan** date formats.

Language

The Rio Fuse menus can be set to display in one of six languages.



- 1 Press **MENU**.
- 2 Select **Settings**.
- 3 Press **RIOSTICK**.
- 4 Select **Language**.
- 5 Press **RIOSTICK**.
- 6 Select a **Language** setting.
- 7 Press **RIOSTICK**.

Language settings include:

- **English** (the default setting)
Set the player display language to **English**.
- 日本語
Set the player display language to **Japanese**.
- **Deutsch**
Set the player display language to **German**.
- **Français**
Set the player display language to **French**.
- **Español**
Set the player display language to **Spanish**.
- **Italiano**
Set the player display language to **Italian**.

Lock Setup

Use the options in the **Lock Setup** menu to enable volume and RioStick control when the lock is enabled.



- 1 Press **MENU**.
- 2 Select **Settings**.
- 3 Press **RIOSTICK**.
- 4 Select **Lock Setup**.
- 5 Press **RIOSTICK**.
- 6 Select **Lock Volume** and **RioStick** options.
- 7 Press **RIOSTICK** to apply settings and return to Playback mode.

Lock Setup settings include:

- **Lock Volume**
Options include **On** (the default setting) and **Off**. When set to **Off**, the volume level can be adjusted even when the Rio Fuse has been locked.
- **RioStick**
Options include **Lock** and **▶ / ||**. When set to **▶ / ||**, any RioStick movement will be interpreted as the **▶ / ||** control.

:: About

The about screen displays information about the Rio Fuse. Information includes the total amount of space on the disk, the amount of free space, the number of tracks on the player, and the [Firmware](#) version.



- 1 Press **MENU**.
- 2 Select **About**.
- 3 Press **RIOSTICK**.
- 4 Select **Player** or **Storage**.
- 5 Press **RIOSTICK**.

About options include:

- **Player**
Displays firmware version, copyright, and Rio website information.
- **Storage**
Displays disk usage graphic bar, disk usage (MB used/MB capacity), and the total number of tracks.

Chapter 6

Help

:: Troubleshooting

Customer Service Information

The FAQs below will help you solve common issues with your player. If you do not find the answers you need here, you can contact our Customer Service Department via any of the following methods:

Web: www.rioaudio.com/support

Technical Support Telephone: (206) 515-1400

Customer Support Telephone: (800) 468-5846

With every Rio product you receive the following support services:

- Unlimited access to the Rio web-based technical information resources, available 24 hours a day every day at <http://www.rioaudio.com/support>. Here you will find FAQ files, product updates, and other useful information.
- Unlimited e-mail support for the duration of your Rio product hardware warranty period.
- Access to the latest software updates and enhancements for Rio products via our [website](#).

Frequently Asked Questions

Question	Answer
What type of files can I play with the Rio Fuse?	<ul style="list-style-type: none"> You can play MP3 and WMA files.
Can I load MP3 and WMA files to the Rio Fuse at the same time?	<ul style="list-style-type: none"> Yes. You can play MP3 and WMA audio content. They can be mixed together.
What are the differences between MP3 and WMA files?	<ul style="list-style-type: none"> WMA files are generally half as large as comparable sounding MP3 files. Because WMA uses smaller file sizes, you can store more music in less space on the Rio Fuse. The WMA format is exclusive to Windows-based computers.
Will the Rio Fuse play Variable Bitrate (VBR) files?	<ul style="list-style-type: none"> Yes. Because there are many standards for VBR files, it cannot be guaranteed that every encoding software package will properly function with the Rio Fuse. VBR files that do not comply to standards may lack track time, fast forward, and/or rewind capabilities.
What kind of batteries can I use with the Rio Fuse?	<ul style="list-style-type: none"> The Rio Fuse can use either alkaline and Nickel-Metal Hydride (NiMH) batteries.
Where is the battery indicator on my Rio Fuse?	<ul style="list-style-type: none"> The battery indicator on the Rio Fuse is located in the top-right corner of the display. The segments in the battery icon show the remaining battery power. The illumination of all segments indicates a fully charged battery. Non-illuminated segments indicate a run down battery. The battery indicator blinks when less than 20% of the charge on the battery remains.
What kind of skip protection does the Rio Fuse have?	<ul style="list-style-type: none"> Because the Rio Fuse uses no moving parts it will never skip or stutter during audio playback.
Why will the Rio Fuse not turn on?	<ul style="list-style-type: none"> The Rio Fuse will not power on if LOCK/UNLOCK is in the lock position. Confirm the LOCK/UNLOCK switch on the Rio Fuse is not in the lock position and press POWER to turn the Rio Fuse on.

How many tracks can I store on the Rio Fuse?	<ul style="list-style-type: none">The number of tracks that can be stored on the Rio Fuse depends on the bitrate of the files stored. <table><thead><tr><th data-bbox="676 194 801 235">Bitrate</th><th data-bbox="917 194 1574 262">Approximate amount of space required per minute of audio content</th></tr></thead><tbody><tr><td data-bbox="685 288 801 315">64 kbps</td><td data-bbox="917 288 1023 315">0.5 MB</td></tr><tr><td data-bbox="685 315 801 342">96 kbps</td><td data-bbox="917 315 1033 342">0.75 MB</td></tr><tr><td data-bbox="685 342 801 369">128 kbps</td><td data-bbox="917 342 994 369">1 MB</td></tr><tr><td data-bbox="685 369 801 396">164 kbps</td><td data-bbox="917 369 1033 396">1.25 MB</td></tr><tr><td data-bbox="685 396 801 423">192 kbps</td><td data-bbox="917 396 1033 423">1.75 MB</td></tr></tbody></table>	Bitrate	Approximate amount of space required per minute of audio content	64 kbps	0.5 MB	96 kbps	0.75 MB	128 kbps	1 MB	164 kbps	1.25 MB	192 kbps	1.75 MB
Bitrate	Approximate amount of space required per minute of audio content												
64 kbps	0.5 MB												
96 kbps	0.75 MB												
128 kbps	1 MB												
164 kbps	1.25 MB												
192 kbps	1.75 MB												

Can I update the firmware on the Rio Fuse?

- Yes. If available, firmware for your Rio can be downloaded online.

Note: Quit all applications before running the firmware update. While running the firmware update, do not close the program, turn off the player, or unplug the player from the USB port on your computer.

Downloading the update

- 1 Click on the following link: [Firmware Upgrade](#).
- 2 Click on the link to the Rio Fuse.
- 3 Locate **UPDATES** and click **Firmware**.
Select and download the latest software. Download the software that is specific to the operating system you use on your PC:

*.exe (Windows)

*.hqx (Mac)

*.zip (Windows; must use WinZip to open)

*.txt (All operating systems—a text file including update information and instructions.)

Installing the update (PC)

- 1 Connect the player to your computer's USB port.
- 2 Turn the player on.

Waiting will display on the player screen.

- 3 Double-click the file that you downloaded from the Rio website.
The update should take approximately 30 seconds to load.

Installing the update (Mac)

- 1 Connect the player to your computer's USB port.
- 2 Turn the player on.
- 3 Double-click the iTunes icon.
- 4 Select the Rio player icon.
- 5 Click **Options** on the iTunes window. The Rio Settings window is displayed
- 6 Click **Upgrade Firmware** on the Rio Settings window.
- 7 Select the firmware update you downloaded from the website.
- 8 Click **Open**.

:: Glossary of Digital Audio Terms

Bass

Bass is the particular low-range area of the sound spectrum where low musical notes and sounds are located. Increasing the bass value will make the low vocals and drums more prominent in your music. You can select the amount of bass in your music by selecting various [Equalizer](#) options or setting your own [Bass/Treble](#) menu option.

Bitrate

Bitrate denotes the number of bits per second used by a digital music file. The size and quality of a compressed digital audio file is determined by the bitrate used when encoding the file. Generally, the higher the bitrate used, the higher the sound quality, and the larger the file size. For example, a bitrate of 96kbps (96,000 bits per second) is generally thought of as "CD quality" for WMA audio files, and takes up about 0.75 megabytes (MB) per minute of music. At a 64kbps bitrate, the sound quality of WMA is similar to that of an FM radio signal, but approximately two minutes of music will fit in 1MB of space.

Codec

Depending on the context and kind of technology involved, codec can be defined as a compressed digital audio file format (like MP3, WMA, etc.), a "coding/decoding" chip used to translate between digital and analog transmissions (used in modems), or a compression/decompression algorithm. Codecs compress audio data into a file, often for efficient transmission over a network, and then decode it for playback. While all the codecs perform similar compression of digital audio, there are differences in the technology.

The Rio Fuse supports the following digital audio codecs:

- MP3
- WMA

Firmware

Firmware is the read-only software that is installed on the player. Like software it can be updated, but unlike software it can never be deleted from the player.

ID3 Tag

The ID3 tag is the part of the encoded MP3 or WMA file that contains information about the digital music file such as song title, artist, album title, encoding bitrate, track time duration, and so on. ID3 tag information is displayed on the Album/Artist/Track title line on the player's LCD.

MP3

MP3 is short for Moving Pictures Experts Group Audio Layer 3. MP3 is the most well known compressed digital audio file format. This format allows for near "CD quality" sound, but at a fraction of the size of normal audio files. MP3 conversion of an audio track from CD-ROM can reduce the file size by approximately a 12:1 ratio with virtually no perceptible loss in quality. MP3 compression removes the redundant and irrelevant parts of a sound signal that the human ear doesn't hear. This digital sound encoding and compression process was developed by the Fraunhofer Institute for Integrated Circuits and Thomson Multimedia.

Rip and Encode

Rip and encode refers to the process of extracting audio from a music CD (ripping) and encoding it into a compressed digital audio format like MP3 or WMA.

Synchronize

Rio Music Manager can automatically (or manually) delete old content, transfer new audio content, and keep the content on your Rio Fuse fresh and dynamic. Rio Music Manager must be open for synchronization to occur.

Treble

Treble notes occupy the higher portion of the sound spectrum. Increasing the treble value will raise the levels of the high sounds in your music files. You can select the amount of treble in your music by selecting various [Equalizer](#) options or setting your own [Bass/Treble](#) menu option.

VBR

Variable Bitrate (VBR) encoding converts tracks at a variable rate, using higher bitrate encoding for complex portions and lower bitrate encoding for pauses in songs.

WMA

Windows Media Audio (WMA) is a compressed audio format created by Microsoft as an alternative to MP3. The WMA codec offers greater file compression than the MP3 codec, enabling storage of more digital audio tracks in the same amount of space when compared to MP3s at the same level of quality.

:: Limited Warranty and Software License

Warranty

Digital Networks North America, Inc. warrants that your product will be free from defects in materials and workmanship for a period of ninety (90) days from the date of original retail purchase. Digital Networks North America, Inc. warrants refurbished products, marked and sold as such, for thirty (30) days from the original purchase date. This warranty is extended to the original end user purchaser only and is not assignable or transferable to any other party.

If you discover a defect covered by this warranty, Digital Networks North America, Inc. will repair or replace the product at our sole discretion using new or remanufactured product or components. Digital Networks North America, Inc.'s liability is limited solely to the repair or replacement of the defective product. If Digital Networks North America, Inc. cannot reasonably repair or replace the defective product then Digital Networks North America, Inc. may, at its sole discretion, refund the current suggested retail price for the product. Digital Networks North America, Inc. warrants any replaced or repaired product for a period of thirty (30) days from shipment, or through the end of the original warranty period, whichever is longer.

Warranty Service

To obtain service under this warranty, you must contact a Digital Networks North America, Inc. Customer Care Center within the applicable warranty period to receive a warranty service authorization. You will be required to provide a dated original proof of purchase. Products shipped to Digital Networks North America, Inc. must be shipped postage-paid and packaged appropriately for safe shipment. Digital Networks North America, Inc. is not responsible for products received without a warranty service authorization and may be rejected. Repaired or replacement products will be shipped to you at Digital Networks North America, Inc.'s expense. All products or parts that are replaced become the property of Digital Networks North America, Inc.

Scope of and Limitation on Warranty

This warranty does not cover damage caused by abuse, misuse, unauthorized attempts to open, modify, or repair the product, moisture, extreme heat or cold, corrosive environments, shipping, or high voltage surges from external sources such as power line, telephone line, or connected equipment. This warranty does not cover wear and tear on covers, housing or wiring. This warranty also does not apply to any product with an altered or defaced serial number. Digital Networks North America, Inc.'s liability is limited to the repair or replacement of this product. In no event will Digital Networks North America, Inc. be liable for any amount greater than the currently suggested retail price of this product. We will not be liable to you or anyone else for any damages that result from the failure of this product or from the breach of any express or implied warranties. These include damage to other equipment, lost data, lost profits, or any consequential, incidental, or punitive damages. This written warranty represents the entire warranty agreement between Digital Networks North America, Inc. and you. This warranty is given in lieu of all other warranties, express or implied, including without limitation implied warranties of merchantability and fitness for a particular purpose. This warranty is limited to the term specified above. No warranties, either express or implied, will apply after this period. This warranty may not be altered in any way other than in writing by an officer of Digital Networks North America, Inc. This warranty gives you specific legal rights and you may also have other rights, which vary, from state to state. Some states limit what warranties may be excluded as well as how long an implied warranty lasts, so the above limitation may not apply to you.

:: FCC and Industry Canada Compliance

Federal Communications Commission (FCC)

This device complies with Part 15 of the FCC Rules. Operation is subject to the following two conditions:

- 1 This device may not cause harmful interference, and
- 2 This device must accept any interference received, including interference that may cause undesired operation.

This equipment has been tested and found to comply with the limits for a Class B digital device, pursuant to Part 15 of the FCC Rules. These limits are designed to provide reasonable protection against harmful interference in a residential installation. This equipment generates, uses and can radiate radio frequency energy and, if not installed and used in accordance with the instructions, may cause harmful interference to radio communications. However, there is no guarantee that interference will not occur in a particular installation. If this equipment does cause harmful interference to radio or television reception, which can be determined by turning the equipment off and on, the user is encouraged to try to correct the interference by one or more of the following measures:

- Reorient or relocate the receiving antenna.
- Increase the separation between the equipment and receiver.
- Connect the equipment into an outlet on a circuit different from that to which the receiver is connected.
- Consult the dealer or an experienced radio/TV technician for help.

Industry Canada

This Class B digital apparatus complies with Canadian ICES-003.

Cet appareil numérique de la classe B est conforme à la norme NMB-003 du Canada.

:: Safety

Warning

TO REDUCE THE CHANCE OF SHOCK OR INJURY, DO NOT USE or OPERATE THIS DEVICE IN OR NEAR WATER OR WET LOCATIONS.

CAUTION

RISK OF EXPLOSION, DAMAGE OR BATTERY LEAKAGE IS POSSIBLE IF BATTERY IS REPLACED INCORRECTLY OR BY AN INCORRECT TYPE. NEVER ATTEMPT TO CHARGE A NON-RECHARGEABLE ALKALINE BATTERY. DISPOSE OF USED BATTERIES ACCORDING TO INSTRUCTIONS OR LOCAL LAWS.

Use of headphones while operating a vehicle is not recommended and is unlawful in some states and areas. Be careful and attentive while driving. Stop operation of the player if you find it disruptive or distracting while operating any type of equipment. Listening to music at full power over extended periods of time can be damaging to the hearing of the user.

Index

Symbols

+/- control 19

A

About 38

Accessories 7

Advanced Features 22

B

Backlight 34

Basic Operations 14

Bass

definition 43

menu option 24

Battery

Indicator 40

Installation 3

Bitrate

definition 43

Bookmarks 28

Buttons and Controls 19

C

Codec

definition 43

MP3 44

WMA 44

Contrast 34

Controls 19

Copy tracks 15

Customer Service

Information 39

D

Date View 5

Display 34

E

Earphones 6

Encoding 15, 44

Equalizer 23

F

Federal Communications

Commission (FCC) 47

Firmware 43

Forward 2, 19

Frequently Asked

Questions 40

G

Getting Started 1

Glossary 43

H

Help 39

I

ID3 Tag

definition 44

Industry Canada 47

iTunes 13

L

Language 36

Limited Warranty 45

Liquid Crystal Display

LCD 4

Lock Setup 37

M

MP3 44

P

Package Contents ii

Play All 21

Play/Pause 2, 19

Playback 31

Playlists 21

Power button 2

Power settings 32

R

RealOne Player 11

regulatory information

47

Resume 33

Reverse 2, 19

Rio Music Manager 10

Ripping and Encoding 44

S

Safety information 48

Settings 30

Stop 2, 19

Stopwatch 29

T

Technical Support 39

Time 35

Time Code View 5

Track Format View 5

Transferring tracks

iTunes 18

RealOne Player 17

Rio Music Manager

16

Treble

definition 44

menu option 24

Troubleshooting 39

U

Upgrading firmware 42

USB 6

V

Variable bitrate (VBR) 44

Volume +/- 2, 19

W

Warranty 45

WMA 44

Riö

2600 San Tomas Expy.
Santa Clara, CA 95051-0953
USA

Free Manuals Download Website

<http://myh66.com>

<http://usermanuals.us>

<http://www.somanuals.com>

<http://www.4manuals.cc>

<http://www.manual-lib.com>

<http://www.404manual.com>

<http://www.luxmanual.com>

<http://aubethermostatmanual.com>

Golf course search by state

<http://golfingnear.com>

Email search by domain

<http://emailbydomain.com>

Auto manuals search

<http://auto.somanuals.com>

TV manuals search

<http://tv.somanuals.com>