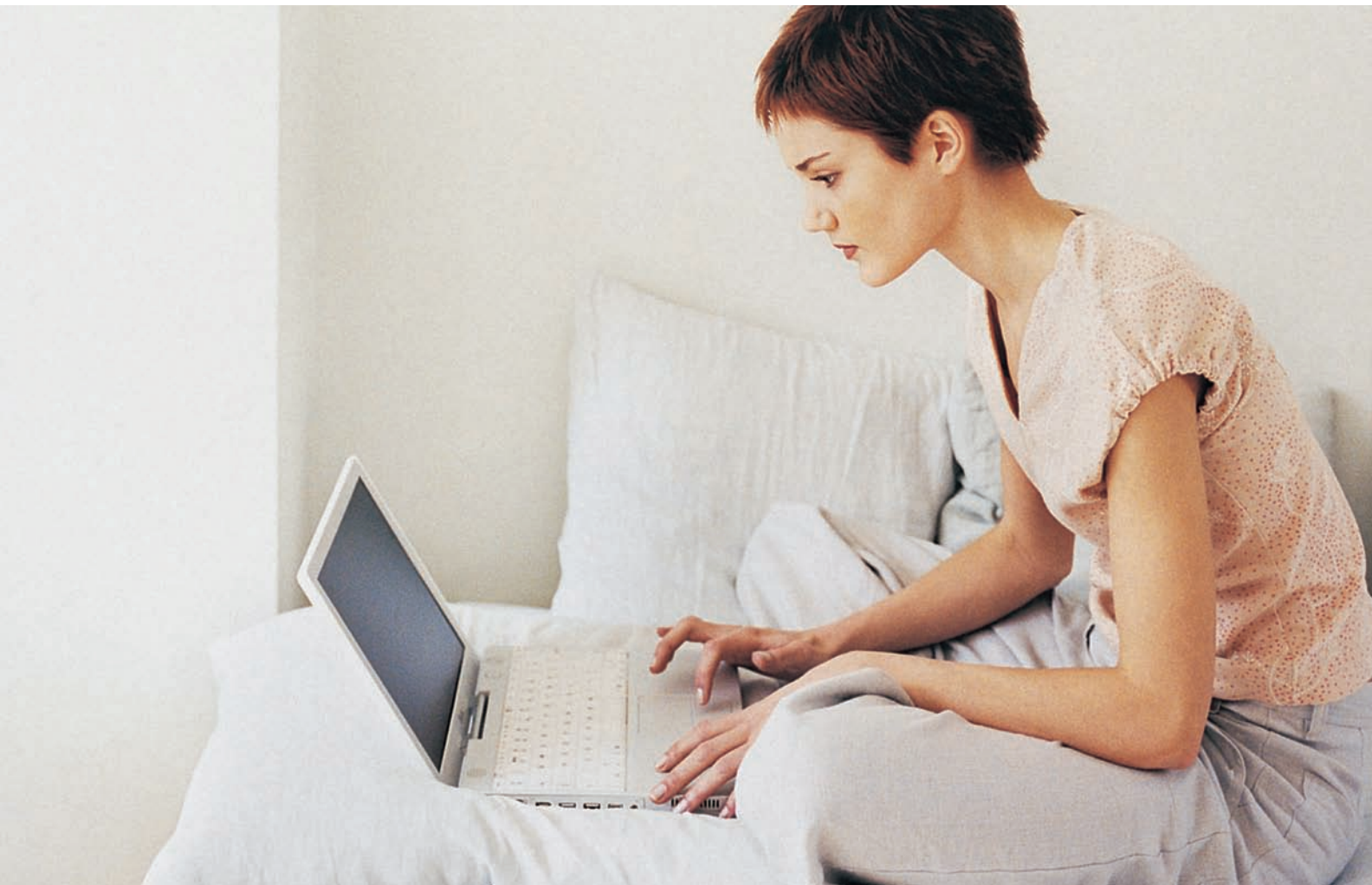


# Alcatel-Lucent 9365 Base Station Router Femto

.....

Simplifies the network architecture  
for increased performance and greater  
revenue opportunities



# Overview



The demand for broadband is increasing rapidly but many W-CDMA subscribers have limited in-house coverage and capacity, and use traditional fixed-line Internet access instead. The challenge for mobile operators is to offer less expensive in-building coverage to enable converged service bundling. The Alcatel-Lucent 9365 Base Station Router Femto (9365 BSR Femto) helps you deliver new applications to the home user, improve in-home W-CDMA coverage and compete with fixed line broadband services while reducing operating costs. Its flat IP architecture is simple to install, cost-effective and efficient.

## Seamless and cost-effective in-building cellular coverage

Seventy percent of calls are made indoors, but only two percent of buildings have purpose-built indoor coverage, and 50 percent of users complain about poor indoor service. Many new entrants are attacking this market.

The 9365 BSR Femto can increase your revenue opportunities by extending service availability to in-building areas, through enhanced quality of service (QoS), and by supporting broadband data services.

## The Alcatel-Lucent 9365 Base Station Router Femto

The Alcatel-Lucent 9365 Base Station Router Femto is a small W-CDMA base station placed inside a building, which uses a digital subscriber line (DSL) connection to backhaul traffic. It addresses the domestic market for high-speed data via localized in-building wireless service provisioning. With the Alcatel-Lucent 9365 BSR Femto, users can benefit from high-QoS wireless capabilities, with the advantages of voice support and W-CDMA mobility

both in the home and outside. The 9365 BSR Femto consolidates the UTRAN elements in a single box as shown in Figure 1, reducing the number of network components, the latency, the complexity of the network, and therefore the cost.

The Alcatel-Lucent 9365 BSR Femto is hardware-ready to support the serving GPRS support node (SGSN) and gateway GPRS support node (GGSN) functionalities in a single unit. These functions will be implemented by software upgrade.

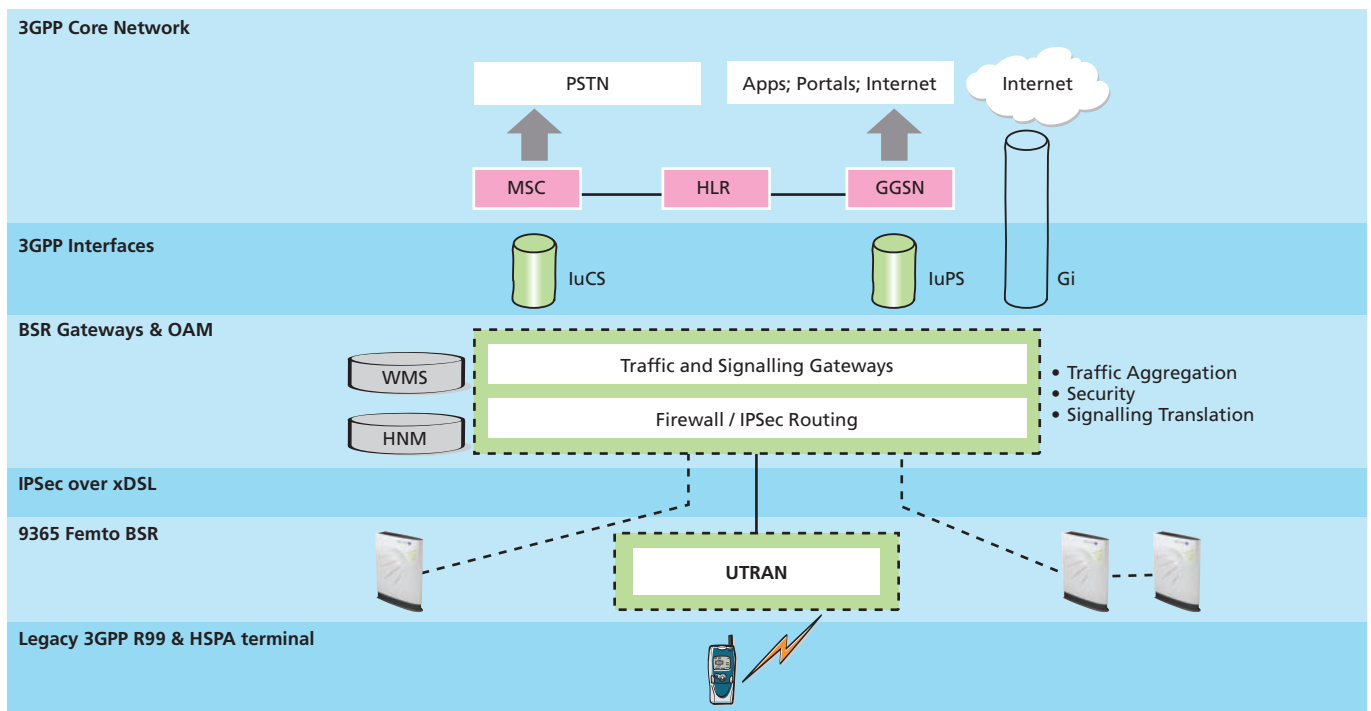
## Key Benefits

FEATURE	BENEFIT
Flat IP architecture	Low latency, fewer bottleneck nodes as traffic is offloaded, allows home networking with sticky applications
Combines the UTRAN in a single box	Low latency, low cost, and automatic configuration
Enables high bandwidth services, such as video in the home, via improved W-CDMA coverage	Increases revenue potential
3GPP compliant	Compatible with all 3GPP-compliant W-CDMA handsets, and offers 3GPP backhaul interfaces (IuPS, IuCS, Gi and Gn) as required, for simple and cost-effective integration into an existing network
Single box, centralized aspects confined at IP layer	Optimizes CAPEX and OPEX, improves network efficiency and simplifies installation
DSL backhaul and zero-touch installation process	No site visits required, saves OPEX
Scalable technology	Simplifies evolution to IMS and 4G Long term Evolution (LTE)/SAE, also based on flat IP

Alcatel-Lucent offers two versions of the 9365 BSR Femto:

- Standalone 9365 BSR Femto – Offers W-CDMA functions only, for consumers who already have a DSL modem. Includes an Ethernet port to connect to the DSL modem.
- Integrated 9365 BSR Femto – Incorporates W-CDMA functions, DSL backhaul and WiFi.

Figure 1. The 9365 Base Station Router Femto flattens the network architecture.



### Increased in-building coverage and capacity at lower cost

Traditionally, as in-home mobile services usage increases, you would need to implement additional outdoor cells to add capacity and enhance indoor coverage. This can be very costly. However, with the Alcatel-Lucent 9365 BSR Femto, you can improve in-house coverage and capacity rapidly, realizing substantial cost savings. The 9365 BSR Femto enables additional revenue opportunities from fixed-mobile market uptake, group tariffs, mobile-data services and DSL services.

### Ease of deployment and installation

To ensure interoperability, seamless operation and investment protection, the 9365 BSR Femto can integrate fully with today's W-CDMA networks. It can be located wherever better in-building coverage is needed. The system uses standard DSL or Ethernet interfaces, allowing direct connections to any DSL line. The 9365 BSR Femto is attractive and installs easily with automatic configuration.

### Flat IP architecture

The flat IP architecture of the 9365 BSR Femto consolidates the UTRAN elements in a single unit, ensuring very low latency. This reduces the roundtrip delay dramatically, enabling latency-sensitive applications to run on mobile networks with a much better quality of experience (QoE). Using IP backhaul reduces infrastructure costs and substantially offloads traffic from the macro layer.



### **Standards compliant**

The Alcatel-Lucent 9365 BSR Femto is compliant with all relevant standards, such as 3GPP. It changes the traditional approach to wireless infrastructure by applying both IETF and IEEE Internet protocols to an all-IP architecture in addition to the 3GPP standards of wireless solutions. All backhaul network interfaces, and the air interface are 3GPP-compliant. Thus any 3GPP-compliant handset or data card will work with the 9365 BSR Femto without modification, and interworking with core network infrastructure from other vendors is simplified.

**The Alcatel-Lucent 9365 BSR Femto is a 3G access point that uses a flat IP architecture to consolidate the UTRAN elements into a single box.**

### **High scalability**

You can deploy the Alcatel-Lucent 9365 BSR Femto with minimal network reconfiguration and expense so you can respond quickly to market needs. Up to 65,000 9365 BSR Femtos per cluster are supported from launch, with an unlimited number of clusters allowed per network, so you can deploy millions of 9365 BSR Femtos as the market expands.

### **Consumer lifestyle convenience**

With the Alcatel-Lucent 9365 BSR Femto, subscribers need only one home multimedia access point to meet their needs for high-speed mobility connectivity. There is no need for separate services, bills, accounts or sign-on procedures from multiple providers.

### **[www.alcatel-lucent.com](http://www.alcatel-lucent.com)**

Alcatel, Lucent, Alcatel-Lucent and Alcatel-Lucent logo are trademarks of Alcatel-Lucent. All other trademarks are the property of their respective owners. The information presented is subject to change without notice. Alcatel-Lucent assumes no responsibility for inaccuracies contained herein. © 2007 Alcatel-Lucent. All rights reserved. WLS7526070908 (10)



## Free Manuals Download Website

<http://myh66.com>

<http://usermanuals.us>

<http://www.somanuals.com>

<http://www.4manuals.cc>

<http://www.manual-lib.com>

<http://www.404manual.com>

<http://www.luxmanual.com>

<http://aubethermostatmanual.com>

Golf course search by state

<http://golfingnear.com>

Email search by domain

<http://emailbydomain.com>

Auto manuals search

<http://auto.somanuals.com>

TV manuals search

<http://tv.somanuals.com>