



# 3.5" SATA Hard Drive Enclosure Kit

**RF-AHD35**

**User Guide**

# Rocketfish RF-AHD35 3.5" Hard Drive Enclosure Kit

## Contents

Introduction .....	2
Safety information .....	3
Features .....	3
Using the hard drive enclosure .....	7
Appendix.....	25
Troubleshooting .....	28
Specifications.....	30
Legal notices .....	31
One-year limited warranty.....	33

## Introduction

Congratulations on your purchase of the Rocketfish RF-AHD35 SATA Hard Drive Enclosure Kit. You can install a high-speed SATA hard drive into this enclosure and connect it to a computer using either a USB 2.0 or eSATA port. This enclosure also has a built-in USB 2.0 hub and memory card reader.

## Safety information

- Always read these safety instructions and this *User Guide* carefully. Keep this *User Guide* for future reference.
- Take precautions to avoid static electricity discharge or short circuits when connecting this enclosure to your computer.
- Do not use this enclosure close to water, rain, or high humidity.
- Do not use or store this enclosure in damp locations. Liquid entering this enclosure may cause damage or lead to fire or electric shock.
- Do not leave any metal objects inside the enclosure when installing the hard drive.
- Do not place anything heavy on top of this enclosure.
- Do not drop or subject this enclosure to shock.
- Do not place this enclosure close to a source of strong magnetic fields (such as a computer monitor, television, radio, or speaker). Strong magnetic fields can affect the reliability of data transfer to and from the enclosure's hard drive.

## Features

- Multi-function storage solution for your computer.
- Supports SATA interface hard drive.
- Connects to a computer using either an eSATA or USB 2.0 host port.
- Supports Serial ATA II transfer rate of 3.0 Gb/s.
- Two-slot card reader that supports SD, MMC, MS, MS PRO, xD, Compact Flash (Type I / II), and IBM Microdrive.
- Two external USB 2.0 downstream ports.
- One-button backup to easily backup, restore, and synchronize data between your Windows PC and the enclosure in USB mode.

- Rapid heat dissipation.
- Can stand or lie down while operating.
- Supports Plug-and-Play and is hot swappable.
- Has one *power on with backup active* indicator and one *card reader active* indicator.

## Package contents

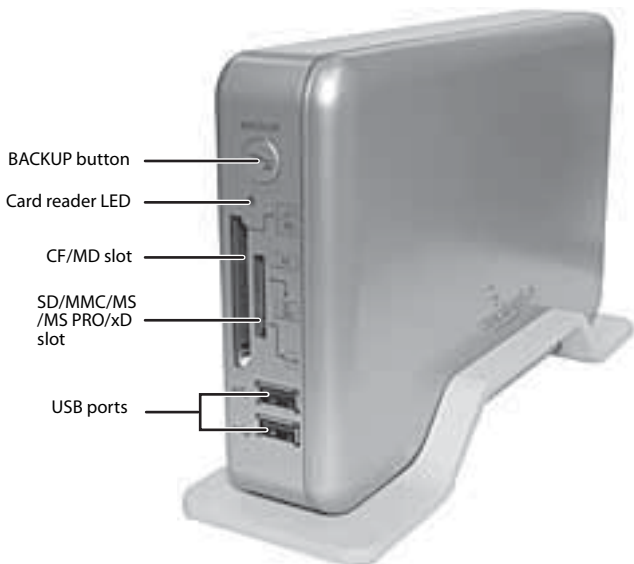
- 3.5" SATA hard drive enclosure
- A-B type USB cable
- eSATA cable
- Two utility CDs
- Quick Setup Guide
- Desktop dual-voltage power adapter with power cord
- An extra swappable cover plate
- Stand
- Accessories:
  - Screwdriver
  - 4 screws
  - 8 rubber feet
  - 4 rubber pads
  - 2 metal braces

## System requirements

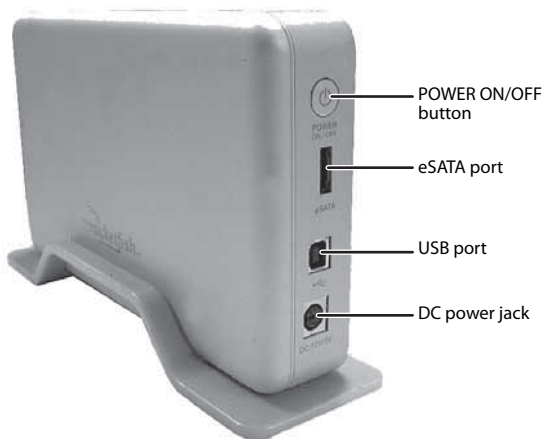
- PC or Macintosh with an available USB 2.0 port or eSATA port
- Microsoft Windows 2000, Windows XP, Windows Vista, or Windows 7 operating system or Mac OS X version 10.3.x or higher operating system
- 3.5" SATA hard drive

## Identifying components

### Front



## Back



## Status indicators

LED indicators	LED	Description
Backup button	Solid	The hard drive is turned on.
	Flashing	Data is being transmitted between your computer and the hard drive.
	Off	The hard drive is turned off.
Card reader	Solid	A memory card is in the reader.
	Flashing	Data is being transmitted between your computer and the card reader.
	Off	The memory card reader slot is empty.

# Using the hard drive enclosure

## Installing your hard drive in the enclosure

Read these safety precautions before you install your hard drive in the enclosure:

- Use only the accessories provided in the accessory package.
- Always unplug the AC power adapter before installing the hard drive.
- Do not use a power supply with a different voltage rating.
- Make sure that you first touch an unpainted, grounded metal object to discharge any static electricity stored on your clothing or body before touching any electronic components.
- Handle the printed circuit board (PCB) edges only. Avoid touching the onboard electronic components.

### ***To install your 3.5" SATA hard drive in the enclosure:***

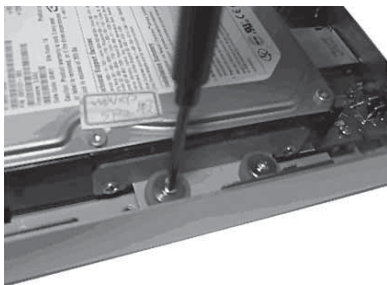
- 1 Remove the four screws from the back of enclosure, then open the front cover plate.



- 2 Secure one metal brace to each side of the drive using two screws.



- 3 Place four rubber pads onto each of the two metal braces on the hard drive as shown.
- 4 Slide the drive into the enclosure, firmly connect the SATA connector, then secure the drive to the enclosure by tightening the four screws through the rubber pads.





- 5 Put the front cover plate back on the enclosure, then secure it with the four screws you previously removed.



- 6 Place four rubber feet on the back of the case, then put four rubber feet on the stand.



## Connecting the enclosure to your computer

Before connecting your external storage enclosure:

- Confirm that your system supports SATA. If your system does not support SATA, please install an eSATA host card.
- Confirm that the eSATA port on your system is working properly. If not, please refer to your computer manufacturer for assistance in getting the eSATA port to work properly.
- To enable auto mount for SATA, your system must support Plug and Play.

### **To connect the enclosure to your computer:**

- 1 Plug one end of the dual-voltage power adapter into the enclosure, then plug the other end to an AC power outlet.
- 2 Plug one end of a USB 2.0 cable or eSATA cable to the enclosure, then plug the other end of the cable to your computer.
- 3 Press the power button to turn on the enclosure. The operating system automatically detects and sets up the new drive.

### **Notes:**

*The enclosure provides USB and eSATA dual interface for host connectivity. The high-speed eSATA port has priority over the USB port when both are connected at the same time.*

*The USB hub and memory card reader only operate through the USB connection.*

**Important:** *For new hard drives, you need to initialize and partition your hard drive before it will appear in Windows Explorer or on your Mac desktop. Please refer to your hard drive manufacturer's documentation or read "Creating A New Partition" section of this manual on page 25.*

**Note:** Some motherboards do not support eSATA hot-plug and play function. If your motherboard does not, follow these steps to set up your RF-AHD35:

1. Shut down your computer.
2. Turn on your RF-AHD35, then connect it to your computer.
3. Power on your computer.

**Notes:**

*Windows XP/2000/Vista/7*

*No drivers are necessary when using Windows XP/2000/Vista/7. If the hard drive does not appear in My Computer, be sure to partition your hard drive.*

*Mac OS X 10.3.x or later*

*No drivers are necessary when using Mac OS X 10.3.x or higher. If the hard drive does not appear on the desktop, be sure to partition your hard drive.*

## Using your USB ports

The enclosure provides two USB ports. You can plug any of the following low-powered USB devices into these ports:

- Keyboard
- Mouse
- Keypad
- Diskette drive
- Network adapter
- Webcam
- Speakers
- Microphone
- Card reader
- Pen drive
- DVD or CD drive
- Digital camera
- Low-capacity 2.5" external hard drive enclosure.

**Note:** Most USB devices require that USB device software drivers be installed before connecting them to a computer. When installing a USB device, always follow the USB peripheral's installation instructions provided by the manufacturer.

## Using your memory card reader

The enclosure provides two memory card slots.

Memory card slots	Memory cards accepted
SD/MMC/MS/MS-PRO/xD	<ul style="list-style-type: none"><li>Secure Digital card (SD)</li><li>Multi Media card (MMC)</li><li>Sony® Memory stick (MS)</li><li>MS PRO</li><li>xD picture cards</li></ul> <p><b>Note:</b> A memory card adapter is required for MiniSD, RS MMC, MS DUO, MS PRO DUO, and MicroSD.</p>
CF/MD	<ul style="list-style-type: none"><li>CompactFlash™ memory cards Type I/II</li><li>IBM™ Microdrive.</li></ul>

### To use a memory card in Windows:

- 1 Insert a memory card into the appropriate slot.

**Caution:** Make sure that the card is inserted into the correct slot and in the correct direction. Failure to do so may result in damage to the card or the slot.

- 2 Open **My Computer** or **Windows Explorer**, then double-click the drive icon for the slot you are using.
- 3 To access files and folders on the inserted card, use the normal Windows procedures for opening, copying, pasting, or deleting files and folders.
- 4 When you have finished working with the files on a memory card, right-click the memory card icon, then click **Eject**.

- 5 Remove the memory card.

**Caution:** Do not remove memory cards while the card reader LED is flashing or blinking.

## Formatting a memory card

**To format a memory card:**

- 1 Click **Start**, and then click **My Computer**.
- 2 Under **Removable Storage**, right-click the memory card icon representing the card type inserted, then click **Format**.
- 3 Type a label name into the label field, if you want to see the name of your memory card appear under its memory card icon.
- 4 Click **Start**.
- 5 Click **OK** in the *Format Complete* window.
- 6 Click **Close** to finish.

## Disconnecting the enclosure from your computer

**To disconnect the enclosure from your Windows computer without shutting it down:**

**Note:** If a drive window is open or the hard drive enclosure is active, close any associated windows before attempting to remove the enclosure.

- 1 Left-click the **Hot plug** icon (located in the notification area of taskbar where you usually see the time displayed).
- 2 Select the drive you want to unplug, then click **STOP**.
- 3 When Windows notifies you that it is safe to do so, unplug the enclosure from your computer.

**To disconnect the enclosure from your Macintosh computer without shutting it down:**

- 1 Drag the USB icon into the **TRASH**.
- 2 Unplug the enclosure.

## Installing the software

The installation CD includes backup software to enable you to back up your files.

**Note:** *This Roxio BackOnTrack software runs only on Windows 7, Windows Vista, and Windows XP computers using USB.*

**Important:** *Before installing the backup software, make sure that your Windows operating system has been updated to the latest service pack. To make sure you have the latest service pack, run Windows Update. No additional driver is required.*

### **To install Roxio BackOnTrack:**

- 1 Save all files and close all programs.
- 2 Insert the included CD into your optical drive. The introductory screen opens.

Or, if the screen does not open, double-click the **autorun.exe** file on the CD.

- 3 Click **Install Roxio® BackOnTrack™ 3 LE**. The *Welcome* screen opens.




- 4 Click **NEXT**. The *Roxio End-User License Agreement* screen opens.

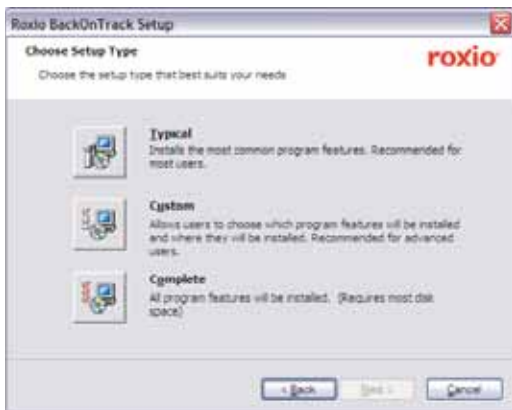




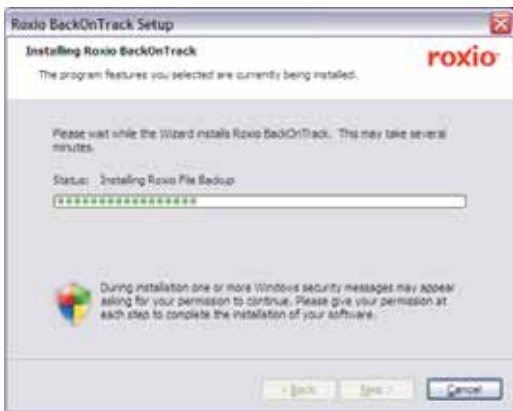
- 5 Read the license agreement, then click **NEXT** to agree. The *Customer Information* screen opens.

A screenshot of a software installation window titled "Roxio BackOnTrack Setup". The window has a standard Windows-style title bar with a close button in the top right corner. The main content area is titled "Customer Information" and includes the instruction "Please enter your information below." followed by the Roxio logo. There are two text input fields: the first is labeled "User Name:" and the second is labeled "Organization:". At the bottom of the window, there are three buttons: "< Back", "Next >", and "Cancel".

- 6 Enter your information, then click **NEXT**. The *Choose Setup Type* screen opens.



- 7 Choose the setup type, then click **Install** to start installation. It may take several minutes to install the software.



- 8 When installation is complete, the *Setup Wizard Completed* screen opens.



- 9 Click **FINISH** to complete the installation.

# Using your enclosure

## Starting Roxio BackOnTrack

### To start Roxio BackOnTrack:

- 1 Press the backup button (the button with the Rocketfish logo on it) on the front of the enclosure.

Or, click **Start, BackOnTrack**, then click **BackOnTrack Home**.

The first time you run the software, the *Product Registration* screen opens.



The screenshot shows a window titled "Online Registration" with a sub-header "Product Registration". The main text says "Please provide the following information:". The form includes the following fields:

- Email address \*
- First name \*
- Last name \*
- Country/Region \* (Dropdown menu showing "United States")
- City \*
- State/Province \* (Dropdown menu showing "Alabama")

At the bottom of the form, there is a checkbox: "Yes, I have read and accept the terms of the [Privacy Policy](#)". Below the form are two buttons: "NEXT" and "CANCEL". In the bottom left corner of the window, the "ROXIO" logo is visible.

- 2 Complete the Product Registration information as prompted (first time only). The main screen opens.



- 3 To back up or restore files, follow the on-screen guide. For help, press **F1** or click **Help**.

## Customizing your card reader

To make the memory card slots easier to recognize, you can customize the drive icons.

### Installing the multimedia card reader software

Before installation, make sure that your Windows operating system has been updated to the latest service pack. To make sure you have the latest service pack, run Windows Update. No additional driver is required.

**Note:** This multimedia card reader software only runs on Windows PCs using the USB mode.

**To install the multimedia card reader software:**

- 1 Insert the included Multimedia Card Reader CD into your disc drive. The software starts automatically. If it doesn't, browse your disc drive, then double-click **Run.exe**.



- 2 Click **Install Multimedia Card Reader**. The following screen opens.



- 3 Click **Next**, then follow the on-screen instructions to install the software.

- 4 Click **Finish** to complete the multimedia card reader software installation. Your computer restarts.



After the multimedia card reader software is installed, Windows displays new drive icons for each of the slots instead of the standard Windows drive icon.

When Windows detects a card in a slot, the corresponding drive icon turns from gray to a color that indicates the card type.

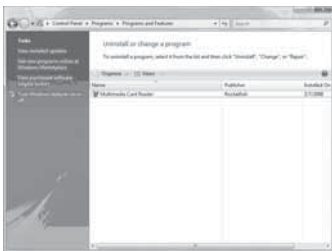




## Uninstalling the multimedia card reader software

**To uninstall the multimedia card reader software:**

- 1 Open the Control Panel.



- 2 Follow the on-screen instructions to remove the software completely from your computer.
- 3 After the program is completely uninstalled, restart your computer.

## Appendix

### Creating A New Partition

*Note: The best way to partition a new hard drive is by using the manufacturers program. Most hard drives should come with a CD that includes its installation program. If not, visit the manufacturer's website to see if a download is available.*

If the manufacturers program is not available, try the following instead:

*Caution: Doing the following will erase any existing data on the drive. If the drive is damaged and you wish to recover the data, continuing may overwrite the existing information!*

## **Creating a new partition in Windows XP/2000/Vista/7**

### ***To create a new partition in Windows XP/2000/Vista/7:***

- 1 Right click on "My Computer" and choose **Manage**.
- 2 Under "Storage" on the LEFT pane, select **Disk Management**.
- 3 Windows should now give you the option to initialize the disk. If not, locate the new drive, right click on the new disk (where it reads "Disk #") and choose **Initialize**. (This step may not be required for some hard drives.)
- 4 Go through the wizard.
- 5 Once complete, locate your hard drive in the bottom right pane. Right-click on the area with a status bar (to the right of the "Disk #" area) and choose **New Partition**.
- 6 Follow the directions of the wizard. The recommended partition type is "primary" and the recommended file system is "NTFS." Please note that Windows XP/2000 limits FAT32 partitions to only 32GB.
- 7 Once complete, you should now be able to see the drive in Windows Explorer.

## **Creating a new partition in Mac OS X 10.3 or higher:**

### ***To initialize a Hard Drive:***

If you are using a new hard drive, you may need to initialize it first. Initialize your internal hard drive using Drive Setup from the Mac OS CD that came with your computer.

- 1 Start up your computer from the Mac OS CD.

- 2 Locate the Utilities folder on the Mac OS CD and double-click it to open the folder.
- 3 Double-click the **Drive Setup** icon to open the program.
- 4 In the list of drives, select the drive you want to initialize.
- 5 Click **Initialize**.

***To format your hard drive with Mac OS Extended format:***

This method of formatting hard drives that allows for more efficient use of hard drive storage space.

- 1 Click **Custom Setup**.
- 2 Select the desired partitioning scheme.
- 3 Open the Type pop-up menu in the Volume Info area and choose Mac OS Extended Format.
- 4 Resize the volumes if desired.
- 5 When ready, click **OK**.
- 6 Click **Initialize**.

***If initialization fails, do the following:***

- 1 Choose **Initialization Options** from the *Functions* menu.
- 2 Click the checkbox next to "Low level format", then click **OK**. Choosing this option adds significant time to the initialization process.

***To format the Hard Drive:***

- 1 Start the Disk Utility tool (under Applications).
- 2 Select the new hard drive you are trying to install.
- 3 Click the **Erase** tab.
- 4 Choose a volume format and assign a name to the new drive.
- 5 Click **Erase**.
- 6 Once complete, your new hard drive should be mounted on your desktop.

**Note:** *If the hard drive will not mount on your system, format the drive with a FAT32 or NTFS partition first through a PC system. Once formatted, connect the [name of enclosure] to your Mac and run the Disk Utility tool again. You should now be able to format the drive into a Mac partition and mount the drive*

## Troubleshooting

### **I do not see the additional drive in my system**

- If connecting with eSATA, confirm that the eSATA port on your system is working properly. If not, please refer to your computer manufacturer for assistance in getting the eSATA port to work properly.
- For new hard drives, you need to initialize and partition your hard drive before it will appear in Windows Explorer or on your Mac desktop. Refer to your hard drive manufacturer's documentation or "Creating A New Partition" on page 25.
- Your computer may not be able to recognize the partition on the hard drive because it is damaged or not a valid format. Refer to "Creating A New Partition" on page 25. for information on how to create a useable partition on your drive.

## **My computer does not detect the enclosure**

- Check the power adapter and make sure the adapter is working.
- Make sure all of the cables and plugs are securely fastened.
- Make sure that the SATA cable or the USB cable is connected firmly to your enclosure and computer.
- Make sure that the USB cable or eSATA cable is not broken.
- Open the enclosure and make sure that all connections are securely fastened.
- Try using the rear USB ports on the back of the PC instead of the front USB ports.
- Check for motherboard compatibility issues.
- Check for hard drive compatibility issues.

## **There is a USB icon in the system tray, but I can't find the hard disk in "MY COMPUTER".**

- Make sure the HDD has been initialized and partitioned before hardware installation. Refer to "Creating A New Partition" on page 25.

## **My memory card does not appear in My Computer or Windows Explorer**

- Try a different memory card of the same type in the same slot. If a different memory card works, replace the original memory card.
- Shine a flashlight into the empty card slots. Check if any pin inside is bent. Straighten bent pins with the end of a mechanical pencil or paper clip.

## My memory card appears in My Computer but I get errors when writing or reading

- Make sure that the memory card is fully inserted into the slot.
- Try a different memory card of the same type in the same slot. If a different memory card works, replace the original memory card.
- Some cards have a read/write security switch. Make sure that the security switch is set to **Write Enabled**.
- Make sure that the amount of data you tried to store does not exceed the capacity of your memory card.
- Inspect the ends of the memory cards for dirt or material closing a hole. Clean the contacts with a lint-free cloth and small amounts of isopropyl alcohol.
- If errors persist, replace the memory card.

## Specifications

Specifications are subject to revision or update without notice.

Hard drive type	3.5" SATA HDD
Dimensions	1.67 × 8.74 × 5.19 in (42.5 × 222 × 132 mm) D×W×L
Interface to drive	SATA
Interface to the computer	USB 2.0 / eSATA
Connectors/buttons front	<ul style="list-style-type: none"><li>• Backup button</li><li>• Memory card reader (two slots)</li><li>• Two USB ports</li></ul>
Connectors/buttons back	<ul style="list-style-type: none"><li>• Power button</li><li>• DC power jack</li><li>• B type USB port</li><li>• eSATA port</li></ul>

Memory cards supported	<ul style="list-style-type: none"> <li>• SD</li> <li>• MMC</li> <li>• MS</li> <li>• MS PRO</li> <li>• xD</li> <li>• CF (Type I &amp; II)</li> <li>• MicroDrive</li> </ul>
Power supply	Desktop dual-voltage AC adapter 5V/12V/2A
Indicators	<ul style="list-style-type: none"> <li>• One card reader active indicator</li> <li>• One power on with backup active indicator</li> </ul>
OS compatibility	<ul style="list-style-type: none"> <li>• Windows 2000</li> <li>• Windows XP</li> <li>• Windows Vista</li> <li>• Windows 7</li> <li>• Mac OS X version 10.3.x or higher</li> </ul>
Operating temperature	32°F~104°F (0°C~40°C)
Operating humidity	20% ~ 80% RH
Certification	FCC Class B, ICES-003

## Legal notices

### FCC Part 15

This device complies with Part 15 of the FCC Rules. Operation of this product is subject to the following two conditions: (1) this device may not cause harmful interference, and (2) this device must accept any interference received, including interference that may cause undesired operation.

This equipment has been tested and found to comply within the limits for a class B digital device, pursuant to Part 15 of the FCC Rules. These limits are designed to provide reasonable protection against harmful interference in a residential installation. This equipment generates, uses, and can radiate radio frequency energy and, if not installed and used in accordance with the instructions, may cause harmful interference to radio communications. However, there is no guarantee that interference will not occur in a particular installation. If this equipment does cause harmful interference to radio or television reception, which can be determined by turning the equipment off and on, the user is encouraged to try to correct the interference by one or more of the following measures:

- Reorient or relocate the receiving antenna.
- Increase the separation between the equipment and receiver.
- Connect the equipment into an outlet on a circuit different from that to which the receiver is connected.
- Consult the dealer or an experienced technician for help.

### **FCC warning**

Changes or modifications not expressly approved by the party responsible for compliance with the FCC Rules could void the user's authority to operate this equipment.

### **Canada ICES-003 statement**

This Class B digital apparatus complies with Canadian ICES-003.



## One-year limited warranty

Rocketfish Products ("Rocketfish") warrants to you, the original purchaser of this new **RF-AHD35** ("Product"), that the Product shall be free of defects in the original manufacture of the material or workmanship for one (1) year from the purchase of the Product ("Warranty Period"). This Product must be purchased from an authorized dealer of Rocketfish brand products and packaged with this warranty statement. This warranty does not cover refurbished Product. If you notify Rocketfish during the Warranty Period of a defect covered by this warranty that requires service, terms of this warranty apply.

### How long does the coverage last?

The Warranty Period lasts for one year (365 days), beginning on the date you purchased the Product. The purchase date is printed on the receipt you received with the product.

### What does this warranty cover?

During the Warranty Period, if the original manufacture of the material or workmanship of the Product is determined to be defective by an authorized Rocketfish repair center or store personnel, Rocketfish will (at its sole option): (1) repair the Product with new or rebuilt parts; or (2) replace the Product at no charge with new or rebuilt comparable products or parts. Products and parts replaced under this warranty become the property of Rocketfish and are not returned to you. If service of Products and parts are required after the Warranty Period expires, you must pay all labor and parts charges. This warranty lasts as long as you own your Rocketfish Product during the Warranty Period. Warranty coverage terminates if you sell or otherwise transfer the Product.

## **How to obtain warranty service?**

If you purchased the Product at a retail store location, take your original receipt and the Product to the store you purchased it from. Make sure that you place the Product in its original packaging or packaging that provides the same amount of protection as the original packaging. If you purchased the Product from an online web site, mail your original receipt and the Product to the address listed on the web site. Make sure that you put the Product in its original packaging or packaging that provides the same amount of protection as the original packaging.

## **Where is the warranty valid?**

This warranty is valid only to the original purchaser of the Product in the United States, Canada, and Mexico.

## **What does the warranty not cover?**

This warranty does not cover:

- Customer instruction
- Installation
- Set up adjustments
- Cosmetic damage
- Damage due to acts of God, such as lightning strikes
- Accident
- Misuse
- Abuse
- Negligence
- Commercial use
- Modification of any part of the Product, including the antenna

This warranty also does not cover:

- Damage due to incorrect operation or maintenance
- Connection to an incorrect voltage supply
- Attempted repair by anyone other than a facility authorized by Rocketfish to service the Product
- Products sold as is or with all faults
- Consumables, such as fuses or batteries

- Products where the factory applied serial number has been altered or removed

REPAIR REPLACEMENT AS PROVIDED UNDER THIS WARRANTY IS YOUR EXCLUSIVE REMEDY. ROCKETFISH SHALL NOT BE LIABLE FOR ANY INCIDENTAL OR CONSEQUENTIAL DAMAGES FOR THE BREACH OF ANY EXPRESS OR IMPLIED WARRANTY ON THIS PRODUCT, INCLUDING, BUT NOT LIMITED TO, LOST DATA, LOSS OF USE OF YOUR PRODUCT, LOST BUSINESS OR LOST PROFITS. ROCKETFISH PRODUCTS MAKES NO OTHER EXPRESS WARRANTIES WITH RESPECT TO THE PRODUCT, ALL EXPRESS AND IMPLIED WARRANTIES FOR THE PRODUCT, INCLUDING, BUT NOT LIMITED TO, ANY IMPLIED WARRANTIES OF AND CONDITIONS OF MERCHANTABILITY AND FITNESS FOR A PARTICULAR PURPOSE, ARE LIMITED IN DURATION TO THE WARRANTY PERIOD SET FORTH ABOVE AND NO WARRANTIES, WHETHER EXPRESS OR IMPLIED, WILL APPLY AFTER THE WARRANTY PERIOD. SOME STATES, PROVINCES AND JURISDICTIONS DO NOT ALLOW LIMITATIONS ON HOW LONG AN IMPLIED WARRANTY LASTS, SO THE ABOVE LIMITATION MAY NOT APPLY TO YOU. THIS WARRANTY GIVES YOU SPECIFIC LEGAL RIGHTS, AND YOU MAY ALSO HAVE OTHER RIGHTS, WHICH VARY FROM STATE TO STATE OR PROVINCE TO PROVINCE.

Contact Rocketfish:

For customer service please call 1-800-620-2790  
[www.rocketfishproducts.com](http://www.rocketfishproducts.com)

Distributed by Best Buy Purchasing, LLC  
7601 Penn Avenue South, Richfield, Minnesota, U.S.A. 55423-3645  
© 2009 Best Buy Enterprise Services, Inc.

All rights reserved. ROCKETFISH is a trademark of Best Buy Enterprise Services, Inc. Registered in some countries. All other products and brand names are trademarks of their respective owners.

[www.rocketfishproducts.com](http://www.rocketfishproducts.com)

(800) 620-2790

Distributed by Best Buy Purchasing, LLC  
7601 Penn Avenue South, Richfield, MN 55423-3645 USA  
© 2009 Best Buy Enterprise Services, Inc.

All rights reserved. ROCKETFISH is a trademark of Best Buy Enterprise Services, Inc.  
All other products and brand names are trademarks of their respective owners.

09-0774  
ENGLISH

## Free Manuals Download Website

<http://myh66.com>

<http://usermanuals.us>

<http://www.somanuals.com>

<http://www.4manuals.cc>

<http://www.manual-lib.com>

<http://www.404manual.com>

<http://www.luxmanual.com>

<http://aubethermostatmanual.com>

Golf course search by state

<http://golfingnear.com>

Email search by domain

<http://emailbydomain.com>

Auto manuals search

<http://auto.somanuals.com>

TV manuals search

<http://tv.somanuals.com>