

# Rocketfish iPad 2 Keyboard Capsule RF-iCAP14 | Quick Setup Guide



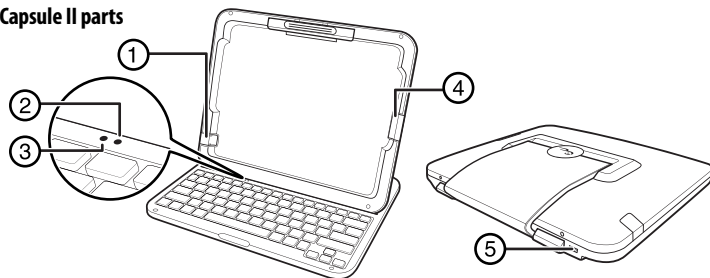
## Package contents

- Keyboard
- USB cable
- Ear phone jack spare cover
- Quick Setup Guide

## Features

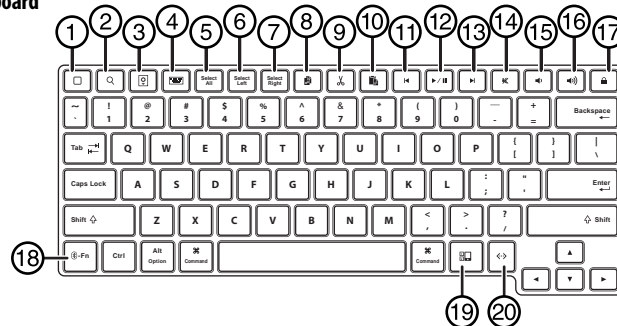
- 82-key design, 20 hot keys for iPad 2
- Easily switch between two Bluetooth devices
- Compact design for mobility and space saving
- Working range up to 33 ft. (10 m)
- Low power consumption
- Bluetooth version 2.0

## iCapsule II parts



#	Component	Description
1	Earphone jack	Remove the rubber piece to connect the earphone to the iPad 2 earphone jack.
2	Battery LED	Orange OFF: Battery full Orange ON: Battery charging Orange BLINKING: Battery low
3	Bluetooth connection LED	Green / Blue ON (2 seconds): Power on (green and blue stand for different paired devices) Green and Blue BLINKING: Searching for devices (pairing)
4	30-pin connect slot	Slide out the rubber piece to connect the 30 pin connector.
5	Micro USB port	Connects to the computer or the power adapter to charge the iCapsule battery.

## Keyboard



#	Description
1	Home button
2	Search button
3	Photo Slide Show button
4	Virtual Keyboard button
5	Select All button
6	Select Left button
7	Select Right button
8	Copy button
9	Cut button
10	Paste button

#	Description
11	Previous track button
12	Play/Pause button
13	Next track button
14	Mute button
15	Volume down button
16	Volume up button
17	Lock button
18	Bluetooth-Fn button (Works with 19 and 20 only)
18+19	Switch Bluetooth device button
18+20	Pairing button

## First time use

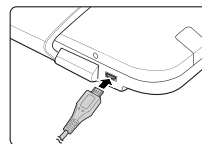
When you unpack your iCapsule II, the internal battery is only partially charged. You should charge it fully before using it.

## Charge the battery

Connect your iCapsule II to a computer or the power adapter using the USB cable (provided) to charge the internal battery.

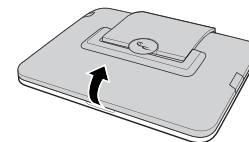
**Note:** USB cable charging voltage is 4.4v ~ 6.0v. It is recommended

to use iPad 2 charger or Apple Computer's. All Manuals Search And Download.

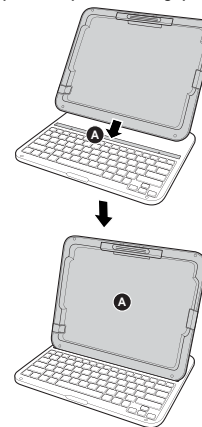


## Setting up iCapsule II

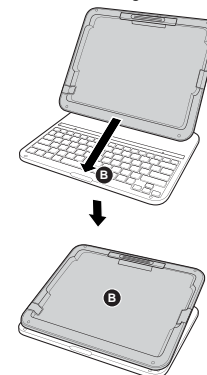
1 Insert a finger into the gap, then lift to open the top panel.



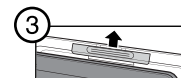
2a For the Typing mode, align and place the panel on the gap.



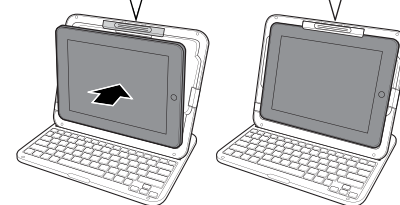
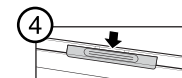
2b For the Stand mode, align the panel with the front edge of the keyboard.



3 Place the bottom edge of the iPad into the bottom of the frame, push up on the latch, then move the top edge of the iPad into the frame.



4 Release the latch to lock the iPad 2 in place.



## Pairing with an iPad 2

When you open your iCapsule II for the first time, it automatically enters discoverable mode for pairing. If the devices are not paired, press the **Bluetooth-Fn + Pairing** button to pair, then do the following:

- 1 On your iPad 2, turn on Bluetooth by going to **Settings > General > Bluetooth**. iPad 2 searches for devices.
- 2 Select the **iPad 2 Keyboard Capsule**.
- 3 When prompted, enter the passkey shown on your iPad 2, then press **Enter**.

Once paired, you do not have to pair with the iPad 2 again.

**Note:** Your iCapsule II can also pair and be used with other Bluetooth devices, such as an iPhone4 or a notebook PC. You can press **Bluetooth-FN + Pairing** button again to pair with another device. This allows you to type on your iPad, iPhone, Notebook PC, or any other bluetooth-enabled device. Simply toggle between the two devices by pressing the **Bluetooth-FN + Switch Bluetooth** device. To set up these additional devices press the **Bluetooth-FN + Pairing** button.

## Using the special keys

Button	Description
<b>Home</b>	Press to return to the home screen
<b>Search</b>	Press to search keywords on your iPad 2 or the Internet
<b>Photo slide show</b>	Press to play a photo slide show
<b>Virtual keyboard</b>	Press to activate or deactivate the on-screen keyboard
<b>Select all, Select left, or Select right</b>	Press to select text
<b>Copy or Cut</b>	Press to copy text
<b>Paste</b>	Press to paste text
<b>Play/Pause</b>	Press to play or pause music playback
<b>Next track or Previous track</b>	Press to listen to the next or the previous song
<b>Volume up or Volume down</b>	Press to adjust the volume
<b>Mute</b>	Press to mute the volume
<b>Lock</b>	Press to switch screen on or off
<b>Bluetooth-Fn + Switch</b>	Press to switch the Bluetooth device connection
<b>Bluetooth-Fn + Pairing</b>	Press to search and pair other devices

## Legal notices

### FCC caution

You are cautioned that changes or modifications not expressly approved by the part responsible for compliance could void the user's authority to operate the equipment.

### FCC statement:

This equipment has been tested and found to comply with the limits for a Class B digital device, pursuant to part 15 of the FCC Rules.

These limits are designed to provide reasonable protection against harmful interference in a residential installation. This equipment generates, uses and can radiate radio frequency energy and, if not installed and used in accordance with the instructions, may cause harmful interference to radio communications. However, there is no guarantee that interference will not occur in a particular installation.

If this equipment does cause harmful interference to radio or television reception, which can be determined by turning the equipment off and on, the user is encouraged to try to correct the interference by one or more of the following measures:

- Reorient or relocate the receiving antenna.
- Increase the separation between the equipment and receiver.
- Connect the equipment into an outlet on a circuit different from that to which the receiver is connected.
- Consult the dealer or an experienced radio/TV technician for help.

### IC RSS-102 statement:

This equipment complies with IC radiation exposure limits set forth for an uncontrolled environment. This equipment should be installed and operated with minimum distance 20cm between the radiator and your body.

Cet équipement est conforme à l'exposition aux rayonnements IC limites établies pour un environnement non contrôlé. Cet équipement doit être installé et utilisé avec un minimum de 20 cm de distance entre le radiateur et votre corps.

### IC RSS-Gen and RSS-210 statement:

This device complies with Industry Canada licence-exempt RSS standard(s).

Operation is subject to the following two conditions: (1) this device may not cause interference, and (2) this device must accept any interference, including interference that may cause undesired operation of the device.

Download from [Www.Somanuals.com](http://www.Somanuals.com). All Manuals Search And Download.

Le présent appareil est conforme aux CNR d'Industrie Canada applicables aux appareils radio exempts de licence. L'exploitation est autorisée aux deux conditions suivantes : (1) l'appareil ne doit pas produire de brouillage, et (2) l'utilisateur de l'appareil doit accepter tout brouillage radioélectrique subi, même si le brouillage est susceptible d'en compromettre le fonctionnement.

## One-year limited warranty

Visit [www.rocketfishproducts.com](http://www.rocketfishproducts.com) for details.

## Contact Rocketfish:

For customer service, please call 1-800-620-2790.

[www.rocketfishproducts.com](http://www.rocketfishproducts.com)

Distributed by Best Buy Purchasing, LLC

7601 Penn Avenue South, Richfield, MN 55423-3645 USA

© 2011 BBY Solutions, Inc., All Rights Reserved. ROCKETFISH is a trademark of BBY Solutions, Inc.

All other products and brand names are trademarks of their respective owners.

Best Buy Imports, S. de R.L. de C.V. Av. Santa Fe 485, Segundo Piso, Colonia Cruz Manca, Programa Parcial de Desarrollo Santa Fe, Delegación Cuajimalpa, Distrito Federal, México 05349

© 2011 Best Buy UK Distributions Limited. All rights reserved. Distributed by Best Buy Europe Distributions Limited. 1 Portal Way, London W3 6RS

## Free Manuals Download Website

<http://myh66.com>

<http://usermanuals.us>

<http://www.somanuals.com>

<http://www.4manuals.cc>

<http://www.manual-lib.com>

<http://www.404manual.com>

<http://www.luxmanual.com>

<http://aubethermostatmanual.com>

Golf course search by state

<http://golfingnear.com>

Email search by domain

<http://emailbydomain.com>

Auto manuals search

<http://auto.somanuals.com>

TV manuals search

<http://tv.somanuals.com>