



Micro Bluetooth 2.1 EDR Adapter

RF-BCDM4

Rocketfish RF-BCDM4 Micro Bluetooth 2.1 EDR Adapter

Contents

Introduction	2
Features.....	3
Windows Vista® or Windows® 7	4
Windows® XP or Windows® 2000.....	18
Uninstalling the software	30
Troubleshooting	30
Legal notices	31
One-year limited warranty	33

Introduction

Congratulations on your purchase of a high-quality Rocketfish product. Your RF-BCDM4 represents the state of the art in Bluetooth adapter design and is designed for reliable and trouble-free performance.

Features

- Bluetooth specification compliant
- The adapter is compatible with the following profiles:

Advanced Audio Distribution Profile (A2DP)	Generic Access Profile (GAP)
Audio Video Remote Control Profile (AVRCP)	Hardcopy Cable Replacement Profile (HCRP)
Basic Imaging Profile (BIP)	Headset/Audio Gateway Profile (HSP)
Basic Printing Profile (BPP)	Human Interface Device Profile (HID)
BNEP	Object Push Profile (OPP)
Dial-Up Networking Profile (DUN)	Personal Area Networking Profile (PAN)
Fax Profile (FAX)	Serial Port Profile (SPP)
File Transfer Profile (FTP)	Synchronize Action Profile (SYNC)
Generic Audio Video Distribution Profile (GAVDP)	Generic Object Exchange Profile (GOEP)

Package contents

- Bluetooth 2.1 EDR adapter
- Installation CD including installation instructions
- *Quick Setup Guide*

System requirements

- Pentium processor or equivalent
- One available USB port (USB 2.0 or 1.1)
- CD drive
- Operating system: Microsoft® Windows 2000, Microsoft Windows XP, Microsoft Windows Vista®, or Microsoft Windows 7

Windows Vista® or Windows® 7

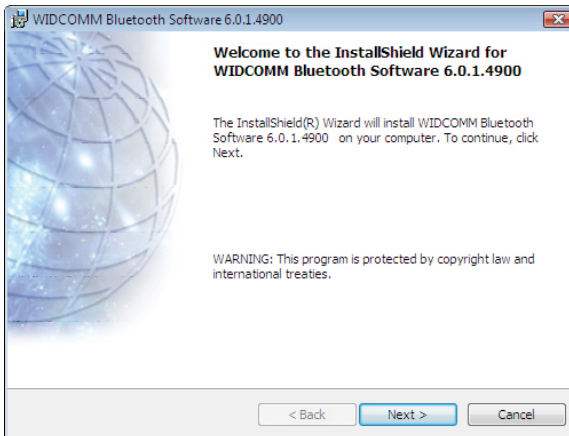
Installing the Bluetooth software in Windows Vista or Windows 7

To install the Bluetooth software in Windows Vista or Windows 7:

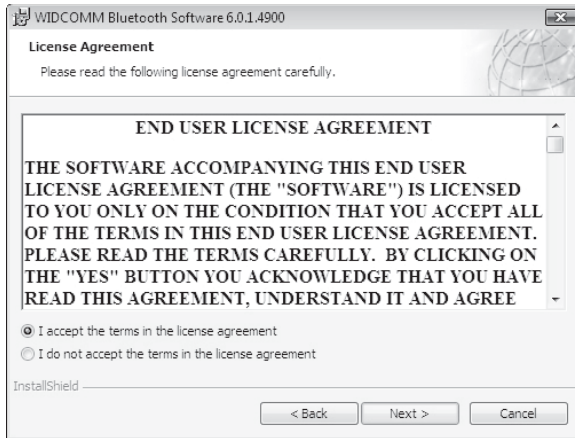
- 1 Insert the provided installation CD into the computer's CD drive. The introductory screen appears automatically. If the screen does not appear, open the **Autorun.exe** file on the CD.



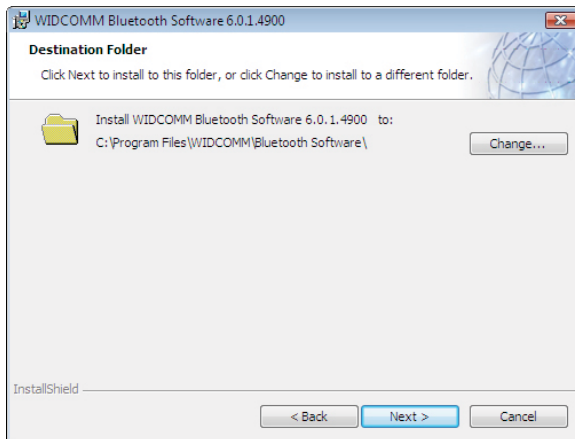
- 2 Click **Install Bluetooth Micro Adapter Driver**. The *Welcome* screen opens.



- 3 Click **Next** to begin the installation. The *License Agreement* screen opens.

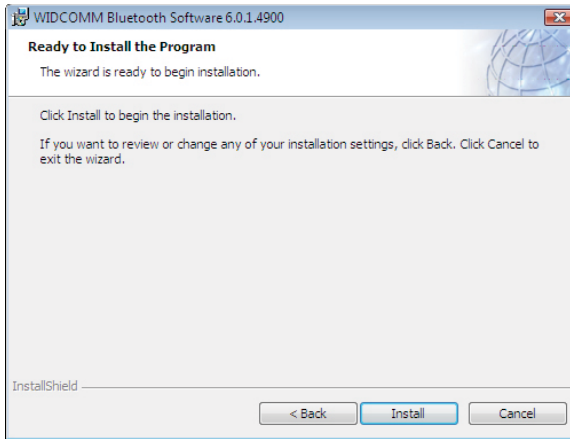


- 4 Read the agreement, click **I accept the terms in the license agreement**, then click **Next**. The *Destination Folder* screen opens.

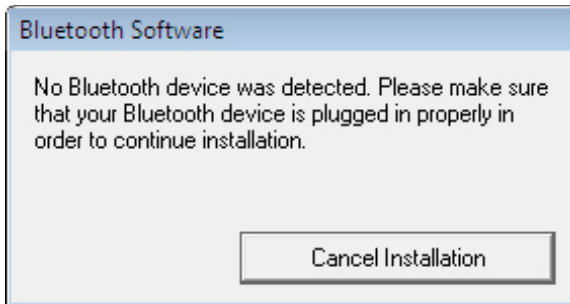


- 5 To install the driver in the default location, click **Next**. The *Ready to Install the Program* screen opens.

Or, to change the location, click **Change**, type the location, then click **Next**. The *Ready to Install the Program* screen opens.

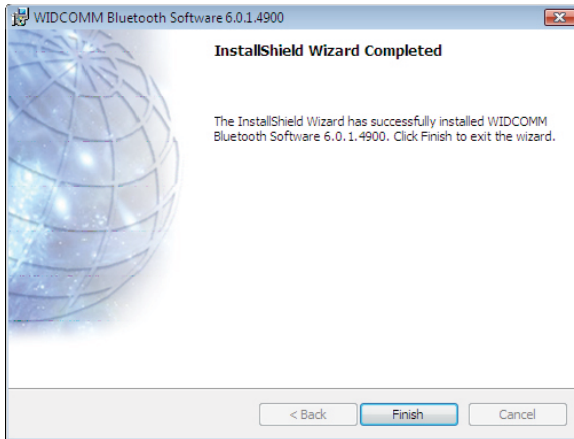


Note: If you have not plugged the Bluetooth adapter into a USB port on the computer, the **Bluetooth device not Found** message opens.

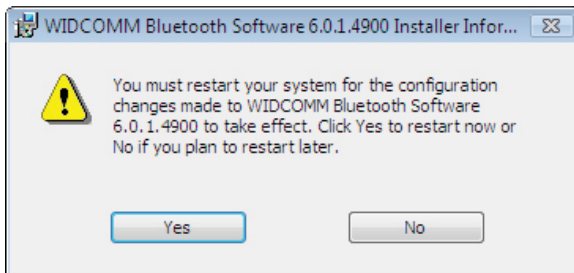


Plug the Bluetooth adapter into a USB port on the computer, then click **OK**.

- 6 Click **Install**. The Found New Hardware Wizard starts installing the Bluetooth software. When the installation is complete, the *InstallShield Wizard Completed* screen opens.




- 7 Click **Finish**. A message tells you that you need to restart the computer.




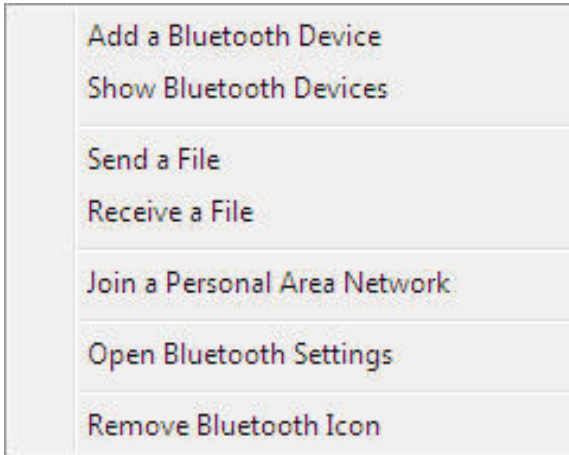
- 8 Click **Yes**.

Using the software in Windows Vista or Windows 7

After you have installed the software and restarted the computer, the Bluetooth icon  appears on the desktop and in the task bar.

To use the right-click menu:

- Right-click the Bluetooth icon . A menu opens with the following options:

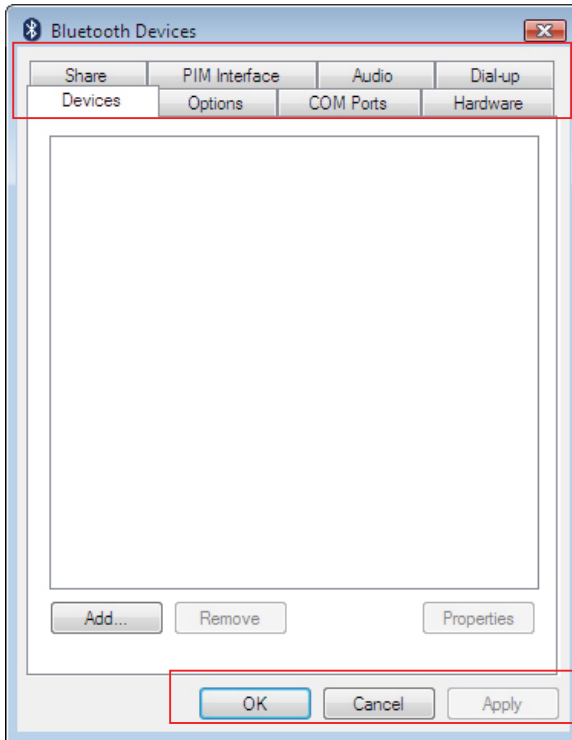


- **Add a Bluetooth Device**—Click to add a new Bluetooth device.
- **Show Bluetooth Devices**—Click to show a list of all detected Bluetooth devices.
- **Send a File**—Click to send a file using Bluetooth File Sharing.
- **Receive a File**—Click to receive a file using Bluetooth File Sharing.
- **Join a Personal Area Network**—Click to join a private Bluetooth network.
- **Open Bluetooth Settings**—Click to open the *Bluetooth Devices* screen.
- **Remove Bluetooth Icon**—Click to remove the Bluetooth icon from the task bar.

Managing Bluetooth connections and settings in Windows Vista or Windows 7

To manage Bluetooth connections and settings in Windows Vista or Windows 7:

- 1 Double-click the Bluetooth icon  in the task bar. The *Bluetooth Devices* window opens.

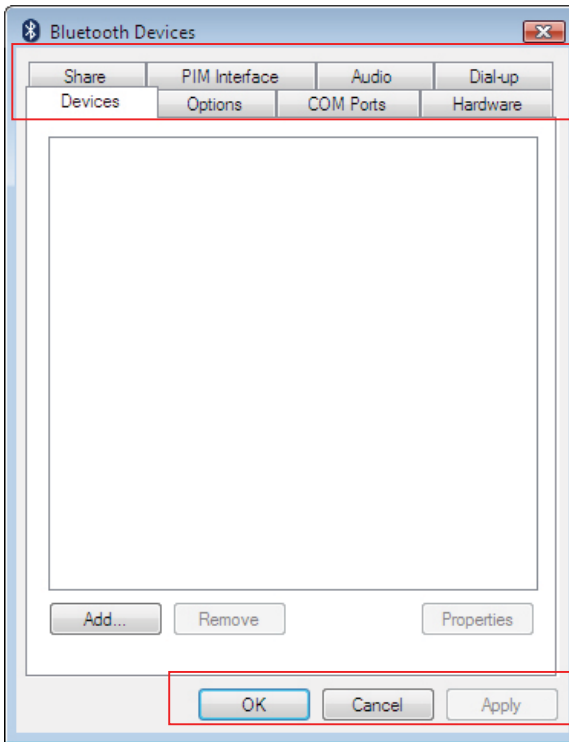


- 2 Click a tab at the top of the window to navigate through the options.
- 3 Make changes, as needed, then click:
 - **Apply** to confirm a setting without closing the window.
 - **OK** to confirm a setting and close the window.
 - **Cancel** to cancel the setting and close the window.

Devices tab

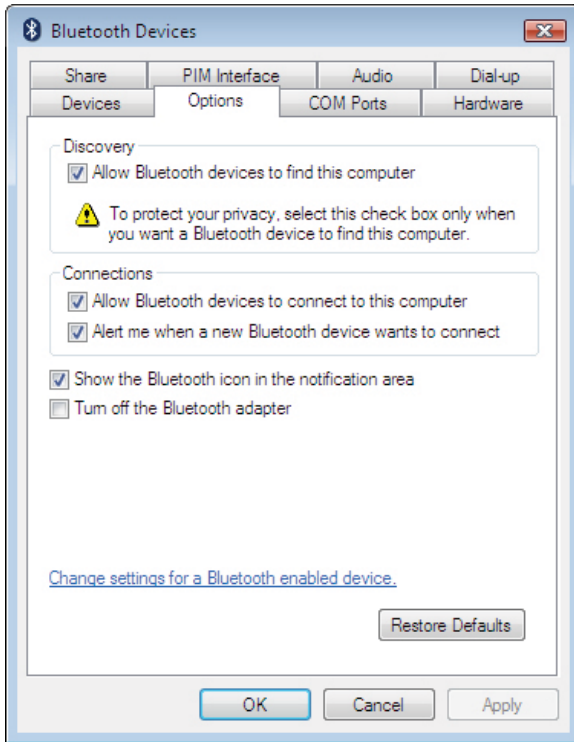
Use this tab to add, view properties for, or remove a device.

- Click **Add** to configure a new device.
- Click a device, then click **Properties** to view the properties for a selected device.
- Click a device, then click **Remove** to remove a device from the list.



Options tab

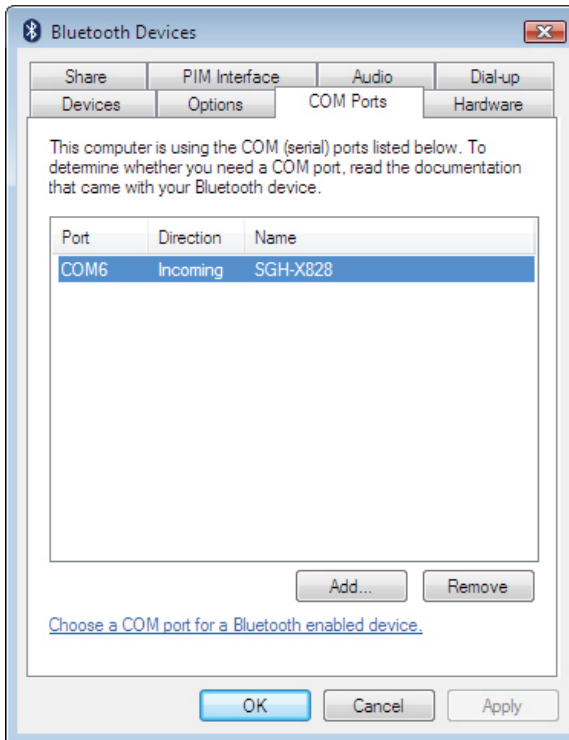
Use this tab to set discovery and connection permissions, show or hide the task bar Bluetooth icon, or restore default settings.



COM Ports tab

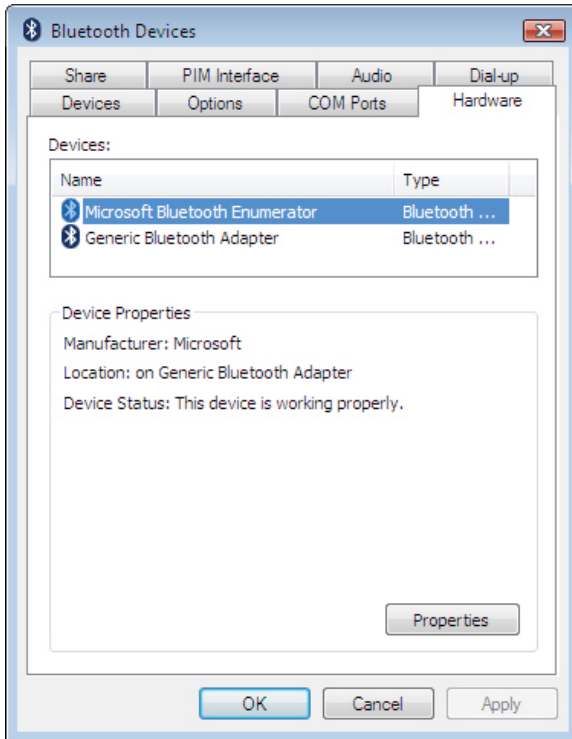
Use this tab to configure the COM (serial) port settings for Bluetooth devices.

- Click a device, then click **Add** to assign a COM port to a Bluetooth device.
- Click a device, then click **Remove** to remove a Bluetooth device from the list.



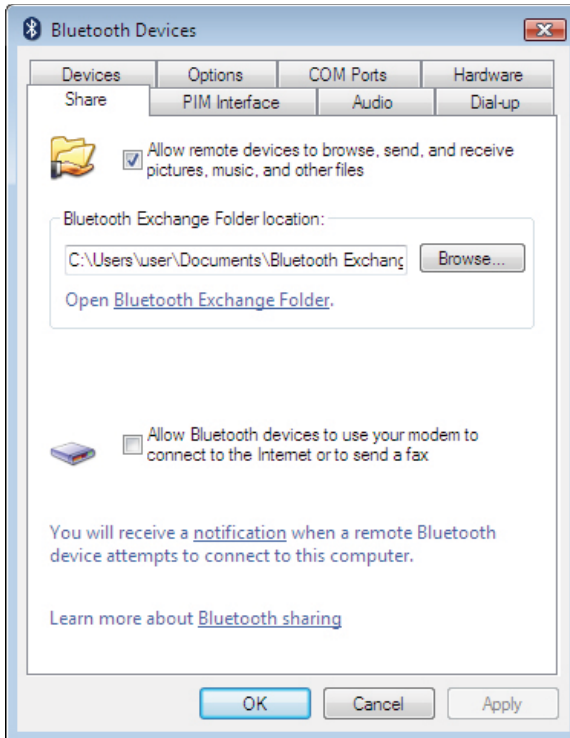
Hardware tab

Use this tab to view hardware information on all connected devices. To see detailed information about a device, click the device, then click **Properties**.



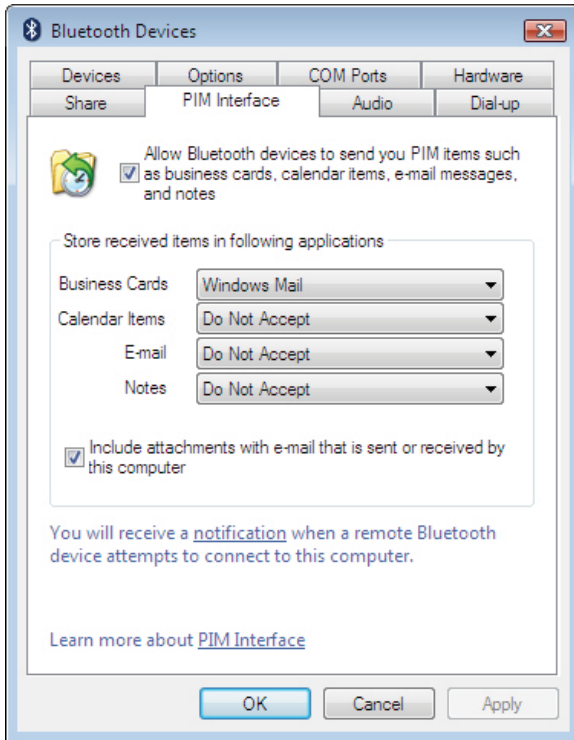
Share tab

Use this tab to configure sharing permissions and settings for sending and receiving files. You can specify what type of file can be accessed by remote devices, where shared files are stored, and whether devices can access the Internet through the computer.



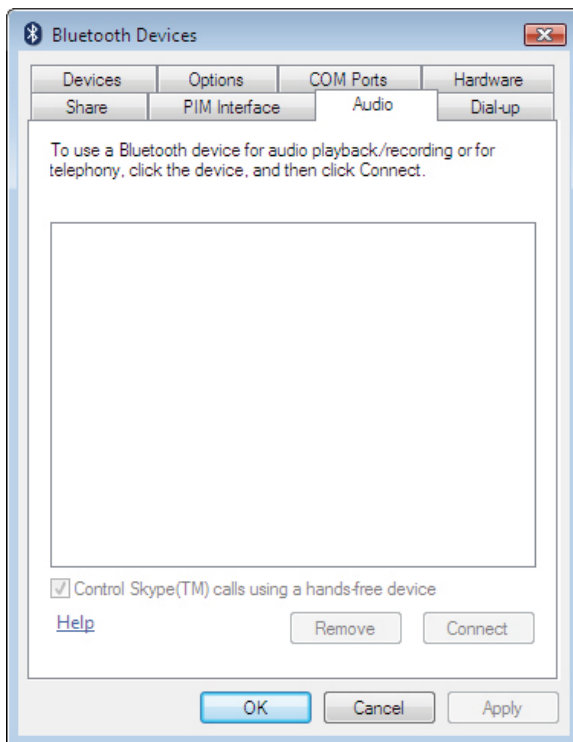
PIM Interface tab

Use this tab to configure settings for received PIM items, such as business cards, calendar items, e-mails, and notes. Click an arrow to open a drop-down list, then click the item you want to receive. To block a PIM type, click **Do Not Accept**.



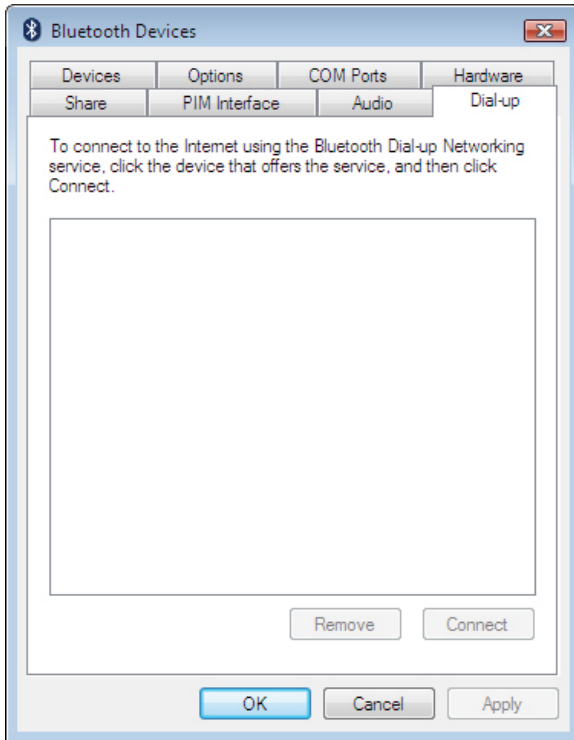
Audio tab

Use this tab to configure settings for devices used for audio playback, audio recording, or telephony. Click a device, then click **Connect** or **Remove**.



Dial-up tab

Use this tab to select or remove a device that uses Bluetooth Dial-up Networking to connect to the Internet.



Windows® XP or Windows® 2000

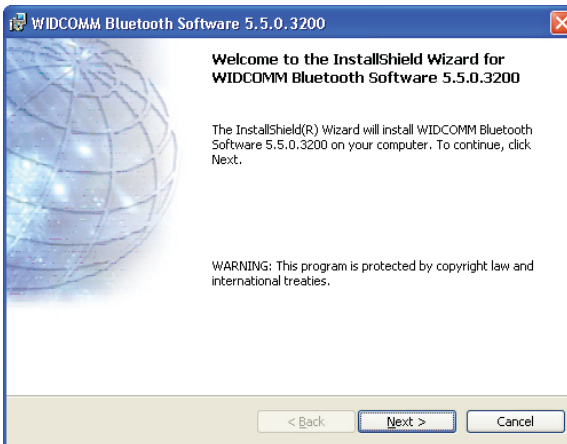
Installing the software in Windows XP or Windows 2000

To install the software in Windows XP or Windows 2000:

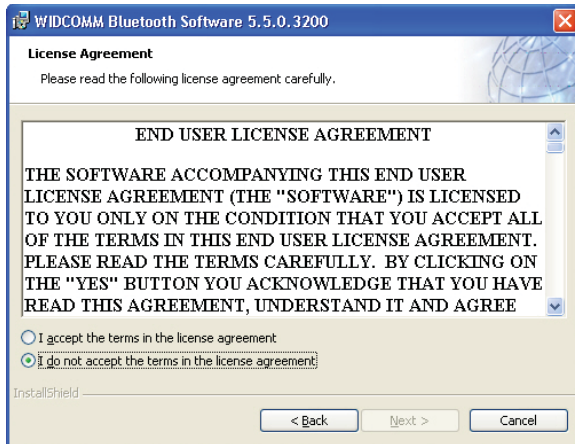
- 1 Plug the Bluetooth adapter into a USB port on the computer.
- 2 Insert the included installation CD into the CD drive on the computer. The introductory screen appears automatically. If the screen does not appear, open the *Autorun.exe* file on the CD.



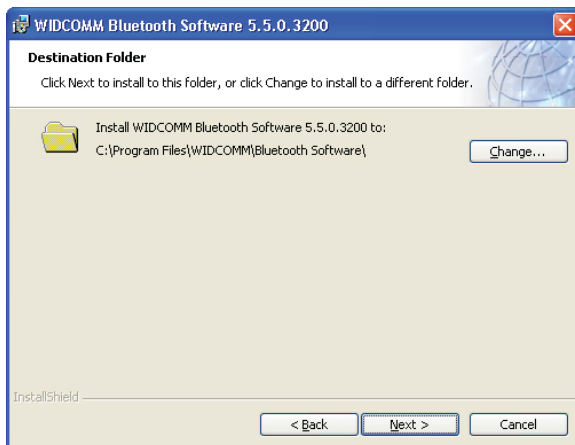
- 3 Click **Install Bluetooth Micro Adapter Driver**. The *Welcome* screen opens.



- 4 Click **Next** to begin the installation. The *License Agreement* screen opens.

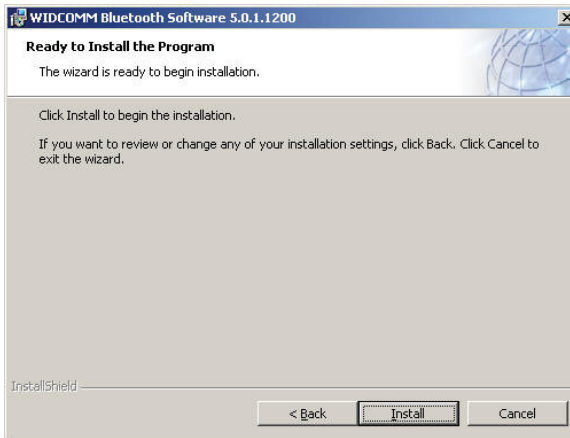


- 5 Read the agreement, click **I accept the terms in the license agreement**, then click **Next**. The *Destination Folder* screen opens.

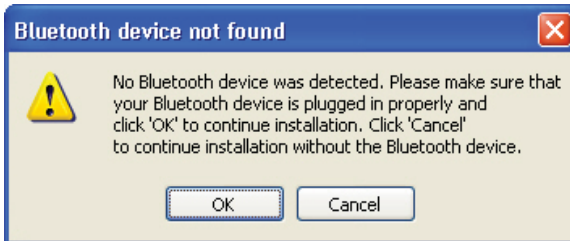


- 6 To install the driver in the default location, click **Next**. The *Ready to Install the Program* screen opens.

Or, to change the location, click **Change**, type the location, then click **Next**. The *Ready to Install the Program* screen opens.

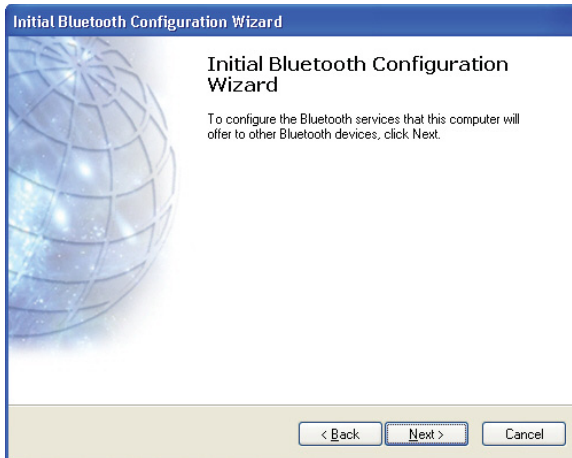


Note: If you have not plugged the Bluetooth adapter into a USB port on the computer, the **Bluetooth device not Found** message opens.



Plug the Bluetooth adapter into a USB port on the computer, then click **OK**.


- 7 Click **Install**. The Found New Hardware Wizard starts installing the software. When the installation is complete, the *Initial Bluetooth Configuration Wizard* screen opens.



- 8 Click **Next**, then go to "Setting up the Bluetooth software in Windows XP or Windows 2000" on page 22.

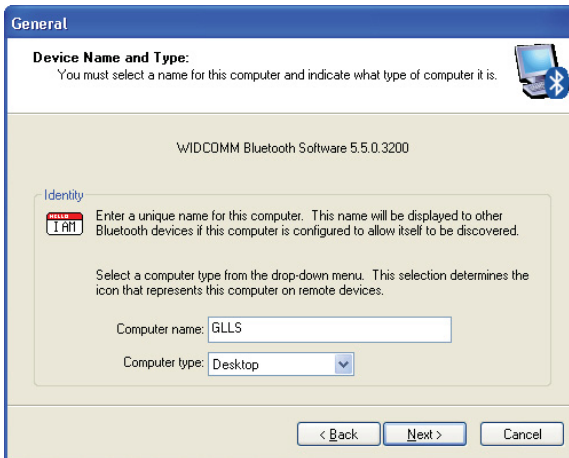
Setting up the Bluetooth software in Windows XP or Windows 2000

To set up the Bluetooth software in Windows XP or Windows 2000:

- 1 If the *Initial Bluetooth Configuration Wizard* screen is not open, double-click **My Bluetooth Places** on the Windows desktop or double-click the Bluetooth icon  on the task bar.



- 2 Click to uncheck the options you do not need, then click **Next**. The *Device Name and Type* screen opens.

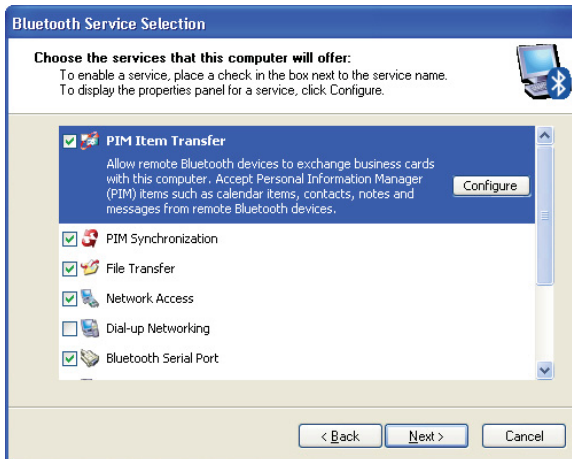


- 3 Type a name for the computer in the **Computer name** box, then open the **Computer type** list and click **Laptop** or **Desktop**.

- 4 Click **Next**. The *Initial Bluetooth Configuration Wizard* screen opens.



- 5 Click **Next**. The *Bluetooth Service Selection* screen opens.



- 6 Click the services that you want the computer to provide to other Bluetooth devices, then click **Next**. Another *Initial Bluetooth Configuration Wizard* screen opens.



- 7 If you want to configure another Bluetooth device, click **Next** and follow the on-screen instructions. Otherwise, click **Skip**. After you configure all devices, the *Initial Bluetooth Configuration Wizard-Congratulations* screen opens.



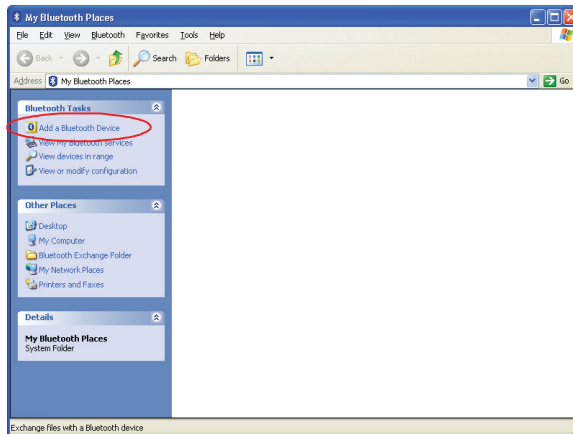
- 8 Click **Finish**.

Connecting to a Bluetooth device in Windows XP or Windows 2000

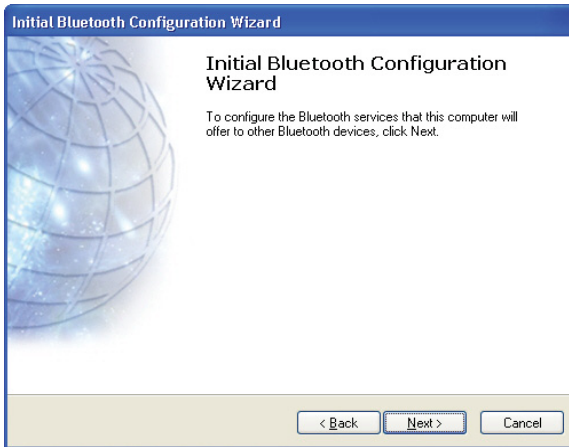
You can connect to Bluetooth devices, such as printers, modems, and PDAs.

To connect to a Bluetooth device in Windows XP or Windows 2000:

- 1 Follow the instructions in the Bluetooth device's documentation to wirelessly connect the device to the Bluetooth adapter.
- 2 Double-click **My Bluetooth Places** on the Windows desktop. The *My Bluetooth Places* window opens.



- 3 Click **Add a Bluetooth Device**. The *Initial Bluetooth Configuration Wizard* screen opens.



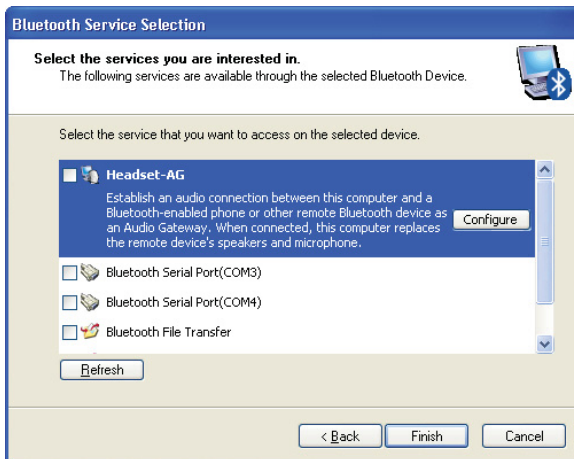
- 4 Click **Next**. The *Blue Device Selection* screen opens. The connected Bluetooth devices are listed.



- Click a device, then click **Next**. The *Bluetooth Security Setup* screen opens.



- Type the numbers shown on the screen to connect to the device. The *Bluetooth Service Selection* screen opens.

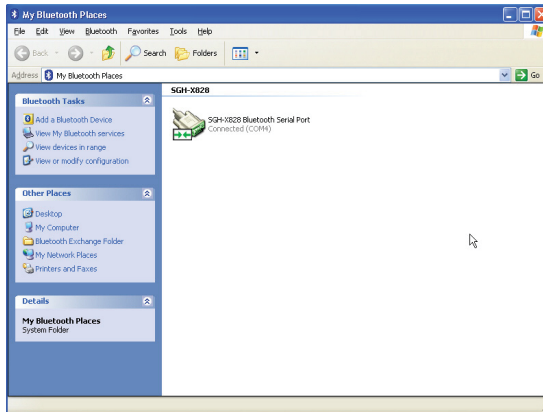


- 7 Click the services you want to enable, then click **Next**. The *Completing Bluetooth Setup Wizard* screen opens.



- 8 Type the name for the Bluetooth device.
- 9 If you want to connect another Bluetooth device, click the **Create a shortcut and restart this wizard** checkbox.

- Click **Finish**. The *My Bluetooth Places* window opens and a shortcut for the device you connected appears.

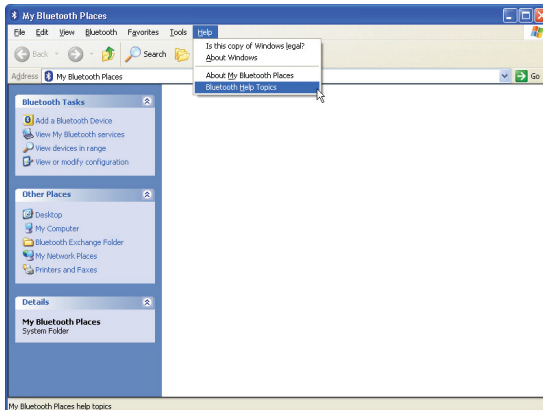


- Click the shortcut to connect to the device.

Getting help in Windows XP or Windows 2000

To get help in Windows XP or Windows 2000:

- Open the *My Bluetooth Places* window.



- Click **Help**, then click **Bluetooth Help Topics**. The help file opens.

Uninstalling the software

Windows Vista or Windows 7

To uninstall the Bluetooth software:

- 1 Unplug the Bluetooth adapter.
- 2 Click **Start**, then click **Control Panel**. The Control Panel opens.
- 3 Under **Programs**, click **Uninstall a program**. The *Program and Features* window opens.
- 4 Click **WIDCOMM Bluetooth Software**.
- 5 When a message asks you if you want to uninstall the software, click **Yes**.


Windows XP or Windows 2000

To uninstall the Bluetooth software:

- 1 Unplug the Bluetooth adapter.
- 2 Click **Start**, then click **Control Panel**. The Control Panel opens.
- 3 Click **Add or Remove Programs**. The *Add or Remove Programs* window opens.
- 4 Click **WIDCOMM Bluetooth Software**, then click **Remove**.

Troubleshooting

If you experience problems connecting a Bluetooth device:

- 1 Double-click **My Bluetooth Places** on the Windows desktop or click the Bluetooth  icon on the toolbar. The *My Bluetooth Places* window opens.
- 2 Click **Help** in the menu bar at the top of the window, then click **Bluetooth Help Topics**. The Bluetooth help file opens.
- 3 Click **Bluetooth for Microsoft Windows Help**, then click **How to Use Bluetooth**. A list of devices and tasks appears, where you can find detailed instructions for many types of device connections.

Legal notices

Declaration of conformity

Important Information

Bluetooth products must be installed and used in strict accordance with the manufacturer's instructions as described in the user documentation that comes with the product. The device complies with the following radio frequency and safety standards.

- Federal Communications Commission (FCC) Compliance Notice
- Radio Frequency Notice

Changes or modifications to this unit not expressly approved by the party responsible for compliance could void the user authority to operate the equipment.

This device complies with part 15 of the FCC Rules. Operation is subject to the following two conditions: 1. This device may not cause harmful interference. 2. This device must accept any interference received, including interference that may cause undesired operation.

The user's manual or instruction manual for an intentional or unintentional radiator shall caution the user that changes or modifications not expressly approved by the party responsible for compliance could void the user's authority to operate the equipment

Note: This equipment has been tested and found to comply with the limits for a Class B digital device, pursuant to part 15 of the FCC Rules. These limits are designed to provide reasonable protection against harmful interference in a residential installation. This equipment generates, uses and can radiate radio frequency energy and, if not installed and used in accordance with the instructions, may cause harmful interference to radio communications. However, there is no guarantee that interference will not occur in a particular installation. If this equipment does not cause harmful interference to radio or television reception, which can be determined by turning the equipment off and on, the user is encouraged to try to correct the interference by one or more of the following measures:

- (1) Reorient or relocate the receiving antenna,
- (2) Increase the separation between the equipment and receiver,
- (3) Connect the equipment into an outlet on a circuit different from that to which the receiver is connected,
- (4) Consult the dealer or an experienced radio/TV technician for help.

Interference Notice

Bluetooth products are a radio device that might cause interference with other non-Bluetooth devices (for instance, devices using wireless LAN). 802.11b technology might cause degradation on the performance of Bluetooth devices.

Caution:

- 1 To comply with FCC RF exposure compliance requirements, a separation distance of at least 20 cm must be maintained between the antenna of this device and all persons.
- 2 This Transmitter must not be co-located or operating in conjunction with any other antenna or transmitter.

Canadian Compliance Statement

This Class B Digital apparatus meets all the requirements of the Canadian Interference Causing Equipment Regulations.

This device complies with Class B Limits of Industry of Canada. Operation is subject to the following two conditions: 1) this device may not cause harmful interference, and 2) this device must accept any interference received, including interference that may cause undesired operation. This device is certified to the requirements of RSS-210 for 2.4 GHz spread spectrum devices. The use of this device in a system operating either partially or completely outdoors may require the user to obtain a license for the system according to the Canadian regulations. For further information, contact local Industry Canada office.

One-year limited warranty

Rocketfish Products ("Rocketfish") warrants to you, the original purchaser of this new **RF-BCDM4** ("Product"), that the Product shall be free of defects in the original manufacture of the material or workmanship for one (1) year from the purchase of the Product ("Warranty Period"). This Product must be purchased from an authorized dealer of Rocketfish brand products and packaged with this warranty statement. This warranty does not cover refurbished Product. If you notify Rocketfish during the Warranty Period of a defect covered by this warranty that requires service, terms of this warranty apply.

How long does the coverage last?

The Warranty Period lasts for one year (365 days), beginning on the date you purchased the Product. The purchase date is printed on the receipt you received with the product.

What does this warranty cover?

During the Warranty Period, if the original manufacture of the material or workmanship of the Product is determined to be defective by an authorized Rocketfish repair center or store personnel, Rocketfish will (at its sole option): (1) repair the Product with new or rebuilt parts; or (2) replace the Product at no charge with new or rebuilt comparable products or parts. Products and parts replaced under this warranty become the property of Rocketfish and are not returned to you. If service of Products and parts are required after the Warranty Period expires, you must pay all labor and parts charges. This warranty lasts as long as you own your Rocketfish Product during the Warranty Period. Warranty coverage terminates if you sell or otherwise transfer the Product.

How to obtain warranty service?

If you purchased the Product at a retail store location, take your original receipt and the Product to the store you purchased it from. Make sure that you place the Product in its original packaging or packaging that provides the same amount of protection as the original packaging. If you purchased the Product from an online web site, mail your original receipt and the Product to the address listed on the web site. Make sure that you put the Product in its original packaging or packaging that provides the same amount of protection as the original packaging.

Where is the warranty valid?

This warranty is valid only to the original purchaser of the Product in the United States, Canada, and Mexico.

What does the warranty not cover?

This warranty does not cover:

- Customer instruction
- Installation
- Set up adjustments
- Cosmetic damage
- Damage due to acts of God, such as lightning strikes
- Accident

- Misuse
- Abuse
- Negligence
- Commercial use
- Modification of any part of the Product, including the antenna

This warranty also does not cover:

- Damage due to incorrect operation or maintenance
- Connection to an incorrect voltage supply
- Attempted repair by anyone other than a facility authorized by Rocketfish to service the Product
- Products sold as is or with all faults
- Consumables, such as fuses or batteries
- Products where the factory applied serial number has been altered or removed

REPAIR REPLACEMENT AS PROVIDED UNDER THIS WARRANTY IS YOUR EXCLUSIVE REMEDY. ROCKETFISH SHALL NOT BE LIABLE FOR ANY INCIDENTAL OR CONSEQUENTIAL DAMAGES FOR THE BREACH OF ANY EXPRESS OR IMPLIED WARRANTY ON THIS PRODUCT, INCLUDING, BUT NOT LIMITED TO, LOST DATA, LOSS OF USE OF YOUR PRODUCT, LOST BUSINESS OR LOST PROFITS. ROCKETFISH PRODUCTS MAKES NO OTHER EXPRESS WARRANTIES WITH RESPECT TO THE PRODUCT, ALL EXPRESS AND IMPLIED WARRANTIES FOR THE PRODUCT, INCLUDING, BUT NOT LIMITED TO, ANY IMPLIED WARRANTIES OF AND CONDITIONS OF MERCHANTABILITY AND FITNESS FOR A PARTICULAR PURPOSE, ARE LIMITED IN DURATION TO THE WARRANTY PERIOD SET FORTH ABOVE AND NO WARRANTIES, WHETHER EXPRESS OR IMPLIED, WILL APPLY AFTER THE WARRANTY PERIOD. SOME STATES, PROVINCES AND JURISDICTIONS DO NOT ALLOW LIMITATIONS ON HOW LONG AN IMPLIED WARRANTY LASTS, SO THE ABOVE LIMITATION MAY NOT APPLY TO YOU. THIS WARRANTY GIVES YOU SPECIFIC LEGAL RIGHTS, AND YOU MAY ALSO HAVE OTHER RIGHTS, WHICH VARY FROM STATE TO STATE OR PROVINCE TO PROVINCE.

Contact Rocketfish:

For customer service please call 1-800-620-2790
www.rocketfishproducts.com

Distributed by Best Buy Purchasing, LLC
 7601 Penn Avenue South, Richfield, Minnesota, U.S.A. 55423-3645

© 2009 Best Buy Enterprise Services, Inc.

All rights reserved. ROCKETFISH is a trademark of Best Buy Enterprise Services, Inc. Registered in some countries. All other products and brand names are trademarks of their respective owners.



www.rocketfishproducts.com (800) 620-2790

Distributed by Best Buy Purchasing, LLC
7601 Penn Avenue South, Richfield, MN 55423-3645 USA
© 2009 Best Buy Enterprise Services, Inc.

All rights reserved. ROCKETFISH is a trademark of Best Buy Enterprise Services, Inc.
All other products and brand names are trademarks of their respective owners.

Free Manuals Download Website

<http://myh66.com>

<http://usermanuals.us>

<http://www.somanuals.com>

<http://www.4manuals.cc>

<http://www.manual-lib.com>

<http://www.404manual.com>

<http://www.luxmanual.com>

<http://aubethermostatmanual.com>

Golf course search by state

<http://golfingnear.com>

Email search by domain

<http://emailbydomain.com>

Auto manuals search

<http://auto.somanuals.com>

TV manuals search

<http://tv.somanuals.com>