

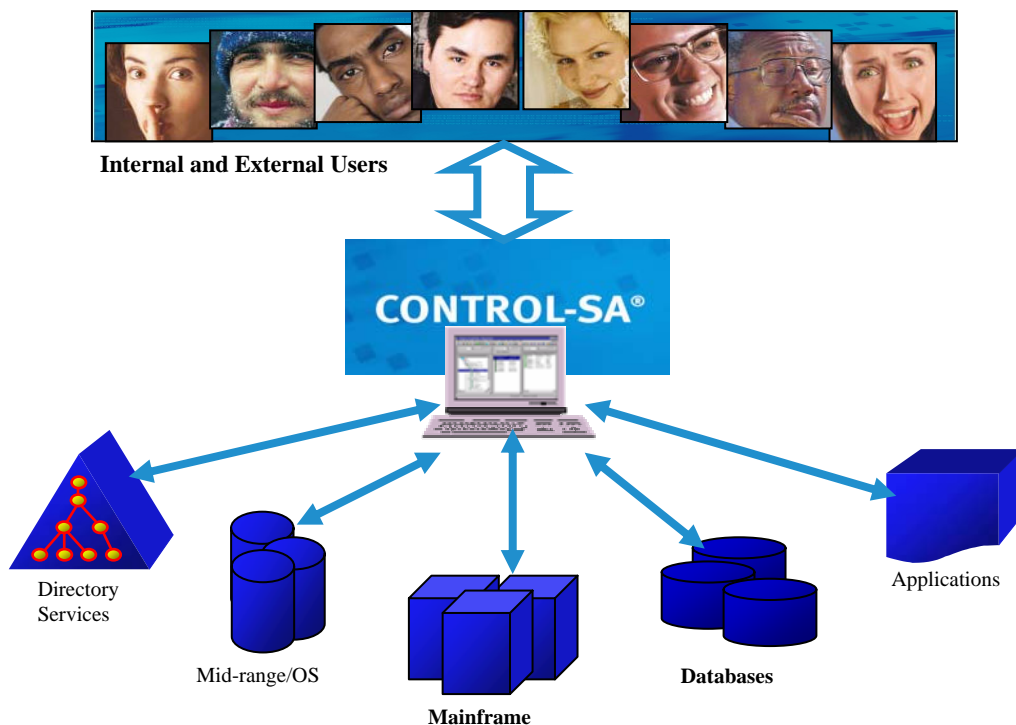


RSA SecurID Ready Implementation Guide

Last Modified 02/04/2004

1. Partner Information

Partner Name	BMC Software
Web Site	http://www.bmc.com/
Product Name	CONTROL-SA/Agent for RSA ACE/Server
Version & Platform	CONTROL-SA 3.x
Product Description	CONTROL-SA is the foundation for secure identity management. It is a solution for centrally managing users' information and access across the various distributed security systems in the organization. CONTROL-SA integrates with numerous systems and applications via CONTROL-SA/Agents. CONTROL-SA/Agent for RSA ACE/Server is designed to integrate CONTROL-SA with RSA SecurID system by allowing bi-directional management of SecurID security entities between CONTROL-SA Enterprise SecurityStation (ESS) and RSA ACE/Server.
Product Category	User Management



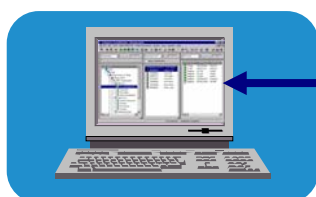
2. Contact Information

	Sales Contact	Support Contact
	Maya Malevich	BMC Support
Email	maya_malevich@bmc.com	support@bmc.com
Phone	00 972 3 7662402	
Web	www.bmc.com	www.bmc.com

3. Solution Summary

Feature	Details
Support for Standard Card, Key Fob, PINPAD, and SoftID	Yes (Manage Tokens as resources)
Add a user to the ACE/Server Database	Yes
Modify user information	Yes
Assign a token	Yes
Un-assign a user's token	Yes
Delete a user from the ACE/Server Database	Yes
Clear a token's PIN	Yes
Enable a token	Yes
Disable a token	Yes
Reconcile ACE/Server Database Users with the User Management database	Yes (Several mechanisms are available: Download for all ACE/Server users and groups, Global Synchronization , and periodic Interception of changes)

CONTROL-SA Enterprise Security Station (ESS)



4. Product Requirements

Hardware requirements

Component Name: CONTROL-SA/Agent for RSA ACE/Server on Windows	
CPU make/speed required	Any hardware configuration supported by Microsoft Windows operating system (e.g., Intel Pentium processor).
Memory	128 MB RAM
Disk space	32 MB of available disk space required, preferably on the local drive
Installation device	CD-ROM drive

Software requirements

Component Name: CONTROL-SA/Agent for RSA ACE/Server on Windows	
Operating System	Version (Patch-level)
Windows	NT 4.0 (Server and Workstation)
Windows	2000 (Server and Advanced Server)
Windows	Server 2003
RSA ACE/Server	5.0.1
RSA ACE/Server	5.1
RSA ACE/Server	5.2

5. Partner Configuration

Installation Prerequisites

Note: For a comprehensive list of all Installation Prerequisites, and Hardware and Software requirements, consult the **CONTROL-SA®/Agent for RSA ACE/Server® Administrator Guide**

- CONTROL-SA/Agent for RSA ACE/Server should be installed on the same machine running the RSA ACE/Server managed.
- Administrative Software: it is required to install and configure CONTROL-SA Enterprise SecurityStation (ESS), version 3.1.00 or above, as specified in the *CONTROL-SA®/Agent for RSA ACE/Server® Administrator Guide*.

CONTROL-SA ESS allows central user management of RSA SecurID together with other security systems across the organization.

Product Configuration

The following is a basic overview of the necessary steps to Install and Configure the CONTROL-SA®/Agent for RSA ACE/Server:

1. Install and configure CONTROL-SA ESS (Enterprise SecurityStation) – as described in the relevant installation, administration and user guides.
2. Install and configure CONTROL-SA/Agent for RSA ACE/Server – as described in the *CONTROL-SA®/Agent for RSA ACE/Server® Administrator Guide*.
3. Configure ESS to integrate with CONTROL-SA/Agent for RSA ACE/Server – as described in the ESS administrators' guide.
4. Perform initial download to retrieve RSA SecurID users and groups.
5. Load resources to retrieve RSA SecurID tokens.

Note that the procedures above are a general overview of the appropriate configuration steps. For comprehensive information on installing the Install and Configure the CONTROL-SA®/Agent for RSA ACE/Server, consult the *CONTROL-SA®/Agent for RSA ACE/Server® Administrator Guide*.

Example Screenshots

The following screenshots are intended to demonstrate some of the functionality of the *BMC CONTROL-
SA@/Agent for RSA ACE/Server®*:

SecurID Group Membership:

The screenshot displays the Enterprise SecurityStation Console interface. The title bar reads "Enterprise SecurityStation Console - essed - [RSS]". The menu bar includes File, View, Entities, Actions, System, Tools, Window, and Help. The toolbar contains various icons for navigation and actions.

The interface is divided into two main sections:

- Left Section:**
 - Entity Type: RSS
 - Max Records to Show: 100
 - Table with columns: RSS Name, RSS Type, Platform Name
 - Table Data:

RSS Name	RSS Type	Platform Name
ace-amazone	AceServer	ace-amazone
ace-felix	AceServer	ace-felix
ace-zydeco	AceServer	ace-zydeco
- Right Section:**
 - Entity Type: User Group
 - Max Records: (blank)
 - Table with columns: User Group, Time of Last Update
 - Table Data:

User Group	Time of Last Update
my-prg	12/31/2002 18:12:46
group-2	12/31/2002 18:12:45
group-15	01/09/2003 16:17:09
group-16	12/31/2002 18:12:45
group-17	12/31/2002 18:12:45
group-18	12/31/2002 18:12:45
group-19	12/31/2002 18:12:45
group-20	12/31/2002 18:12:45
group-21	12/31/2002 18:12:46
group-22	12/31/2002 18:12:46
group-23	12/31/2002 18:12:46
group-24	12/31/2002 18:12:46
group-25	12/31/2002 18:12:46
group-26	12/31/2002 18:12:46
group-27	12/31/2002 18:12:46
group-28	12/31/2002 18:12:46
grpGS3	01/08/2003 18:17:03
grpTmp2	01/09/2003 14:16:58
sync-grp	12/31/2002 18:17:03
groGS*	01/08/2003 18:17:01
group-14	12/31/2002 18:12:45

SecurID Token Management

Update: Resource: -000038263835

General **RSS-Type General** Extension data

Token Type: RSA SecurID Key Fob

Num Digits Displayed: 6

Assigned to: testace

Lost Status: N

Enabled: Y

New PIN Mode: N

Clear PIN: []

Set PIN: []

Last Login: 01/14/2003 12:46:0

Token Start: 03/07/2001 7:0:0

Token shutdown: 10/01/2005 0:59:0

ACE/Server User Management

Update: RSS User: ace

General **RSS-Type General** Password Tokens Statistics
Extension data

User Type: Local User

First name: ace

Last name: ace

Default Shell: /bin/sh

Allowed to create a PIN: Y

Required to create a PIN: N

Temporary User: N

Administrator: Y

Administration Role: Task List | Site []
Realm Task List (Predefined)

6. Certification Checklist

Date Tested: 11/11/2003

Product	Tested Version
ACE/Server	5.1.00
ACE/Agent	5.5.0.117
CONTROL-SA/Agent for RSA ACE/Server	3.1.07

Test	Pass	Fail
1st time connection to ACE/Server Database	<input type="text" value="P"/>	<input type="text"/>
User Management		
Add a user	<input type="text" value="P"/>	<input type="text"/>
Modify a user's information	<input type="text" value="P"/>	<input type="text"/>
Assign a token	<input type="text" value="P"/>	<input type="text"/>
Un-assign a token	<input type="text" value="P"/>	<input type="text"/>
Assign a password	<input type="text" value="P"/>	<input type="text"/>
Un-assign a password	<input type="text" value="P"/>	<input type="text"/>
Enable a user's token	<input type="text" value="P"/>	<input type="text"/>
Disable a user's token	<input type="text" value="P"/>	<input type="text"/>
Clear a user token's PIN	<input type="text" value="P"/>	<input type="text"/>
Delete a user	<input type="text" value="P"/>	<input type="text"/>
Activate a user on a client**	<input type="text" value="N/A"/>	<input type="text"/>
De-Activate a user on a client**	<input type="text" value="N/A"/>	<input type="text"/>
Add a user to a group	<input type="text" value="P"/>	<input type="text"/>
Remove a user from a group	<input type="text" value="P"/>	<input type="text"/>
No ACE/Server	<input type="text" value="N/A"/>	<input type="text"/>

JEC

*P=Pass or Yes F=Fail N/A=Non-available function

** CONTROL-SA/Agent for RSA ACE/Server currently does not include management of clients. However, this is in the work plan for future versions.

7. Known Issues

There are no known issues.

Free Manuals Download Website

<http://myh66.com>

<http://usermanuals.us>

<http://www.somanuals.com>

<http://www.4manuals.cc>

<http://www.manual-lib.com>

<http://www.404manual.com>

<http://www.luxmanual.com>

<http://aubethermostatmanual.com>

Golf course search by state

<http://golfingnear.com>

Email search by domain

<http://emailbydomain.com>

Auto manuals search

<http://auto.somanuals.com>

TV manuals search

<http://tv.somanuals.com>