



## 01

### Check the included items

As soon as you open the package, check to see that all items are included. If anything is missing, please contact your dealer.

#### Stand (MDS-4)

The parts required to assemble the stand (MDS-4) are listed in the MDS-4 Owner's Manual. Check the owner's manual and make sure that you have all of the parts.

#### TD-4K parts

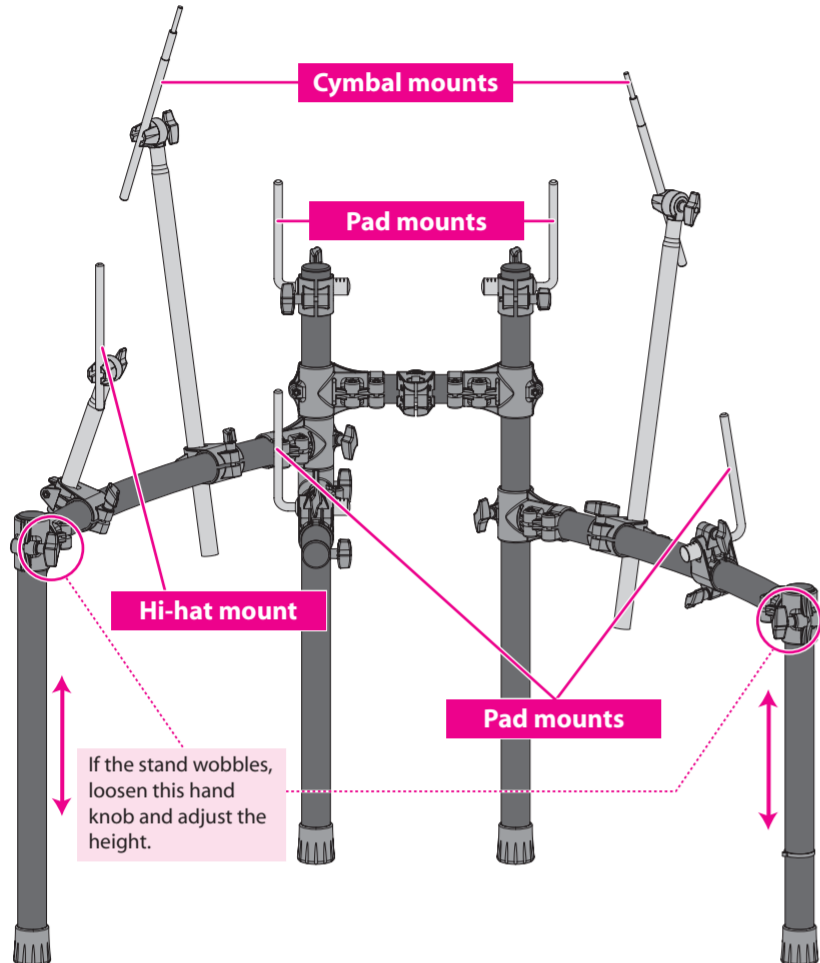


## 02

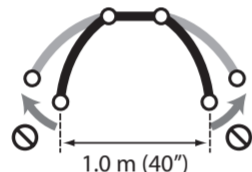
### Assemble the stand

#### Assembly procedure

Assemble the stand using the procedure described in the MDS-4 Owner's Manual.



\* For reasons of safety, do not spread the stand wider than 1.0 meters (40 inches).

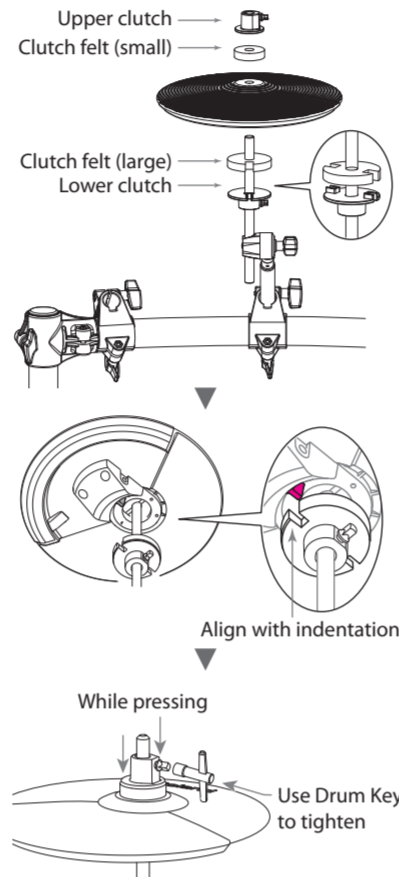


## 03

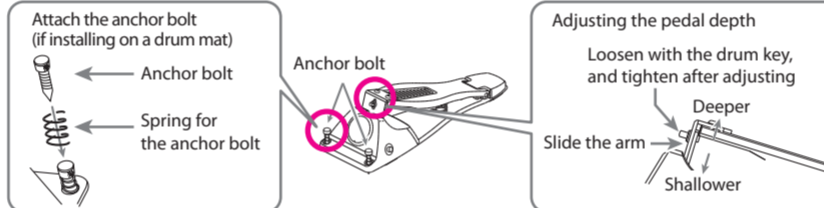
### Attach the parts

\* The parts required for mounting the cymbals and the hi-hat are included in the TD-4K attachment box.

#### Attach the hi-hat (CY-5)



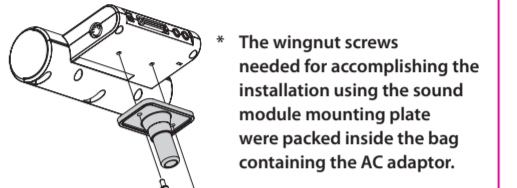
#### Assemble the hi-hat control pedal (FD-8)



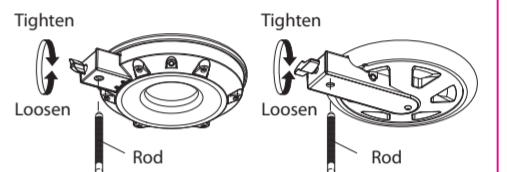
#### Attach the crash cymbal (CY-8) and ride cymbal (CY-8)



#### Attach the sound module (TD-4)



#### Attach the snare (PDX-8) and toms (PD-8)



#### Adjusting the tension (PDX-8)

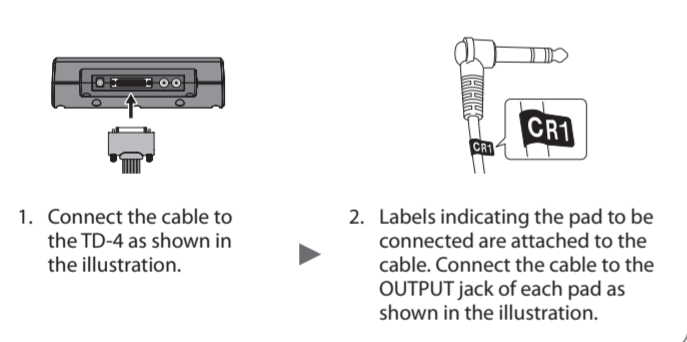


1. Finger-tighten all six of the tuning bolts in the sequence shown in the illustration.
2. The appropriate amount of tension is one that will provide approximately the same striking response as on an acoustic drum.
3. Use the drum key to adjust the tension as needed.

## 04

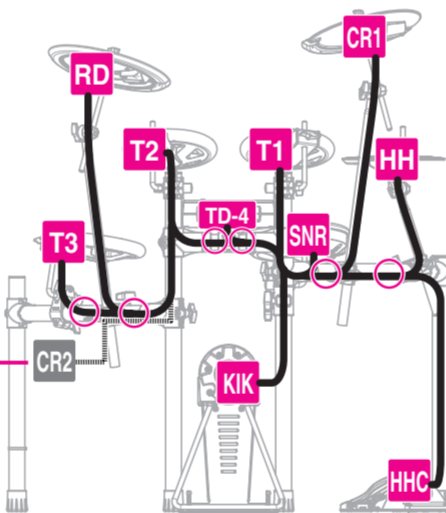
### Connect the pads to the sound module

#### Connection procedure



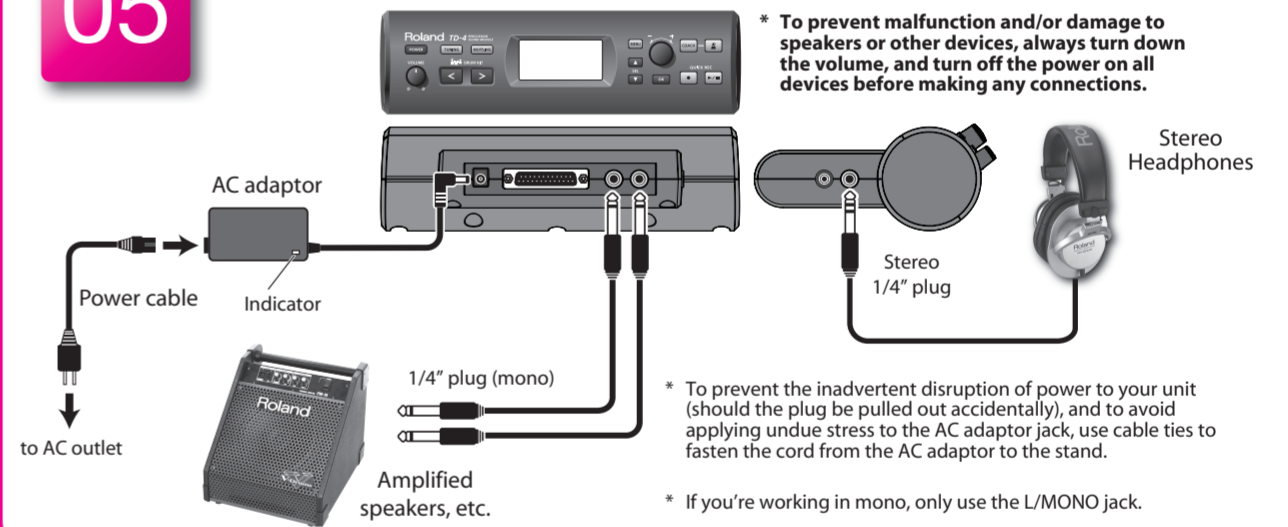
\* Use cable ties to fasten the cables at the circled locations "O" so that they do not interfere with your performance. Make sure to wrap the cable ties around the pipes.

\* Do not connect the CR2 cable (for extension). Leave the cap in place, and fasten the cable so that it will not hinder your performance.



## 05

### Connect the AC adaptor and speakers



This completes assembly and connections.

When you've finished making connections, turn on the power as described in the TD-4 Owner's Manual, and verify that you can hear sound.

## Detailed explanation of each part

### KD-8 (Kick)

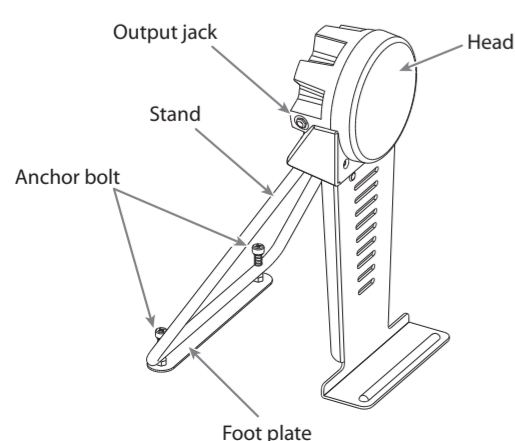
\* Use a commercially available kick pedal.

\* To prevent damage to the floor or carpet and to ensure stability, we recommend that you use a drum mat (TDM series; sold separately).

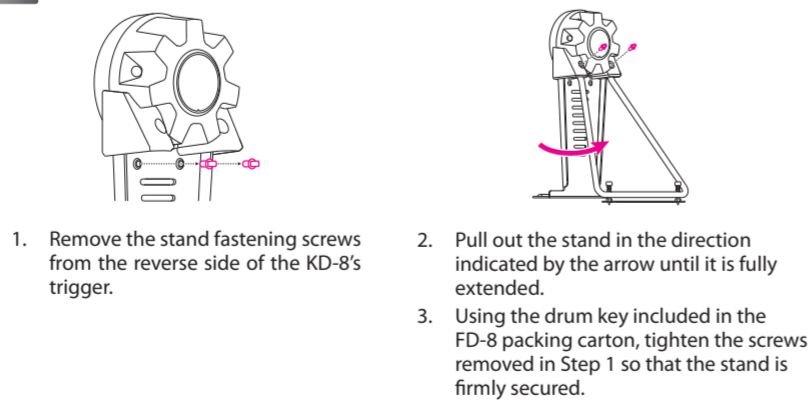
#### NOTE

- \* Install the kick pedal securely.
- \* Take care not to pinch your fingers.
- \* The tips of the anchor bolts are sharp. Handle with care.
- \* When moving the KD-8, be sure to remove the screws and fold the stand. Transporting the KD-8 while it remains open may subject the stand to excessive strain and result in damage to the stand.
- \* Anti-skid tape is affixed to the foot plate. When transporting the KD-8, don't forget to pick up the foot plate.

#### KD-8 component names

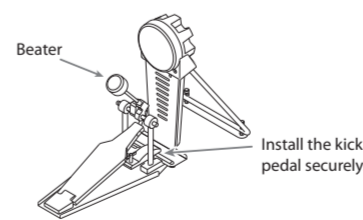


#### 01 Extend the stand and fasten it

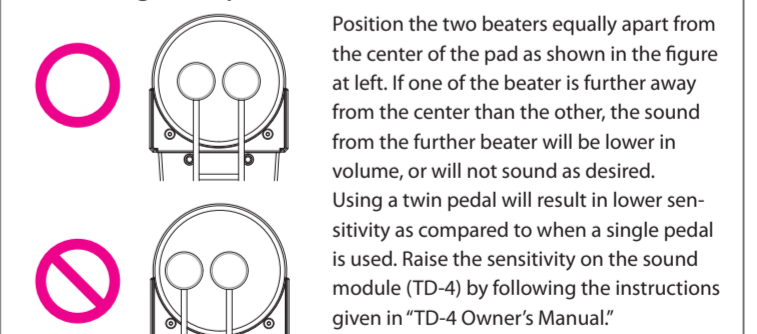


#### 02 Attach the kick pedal

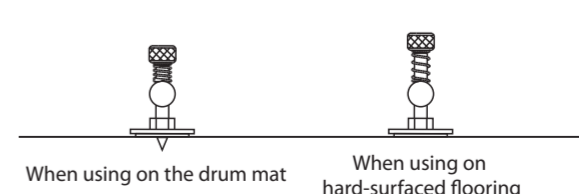
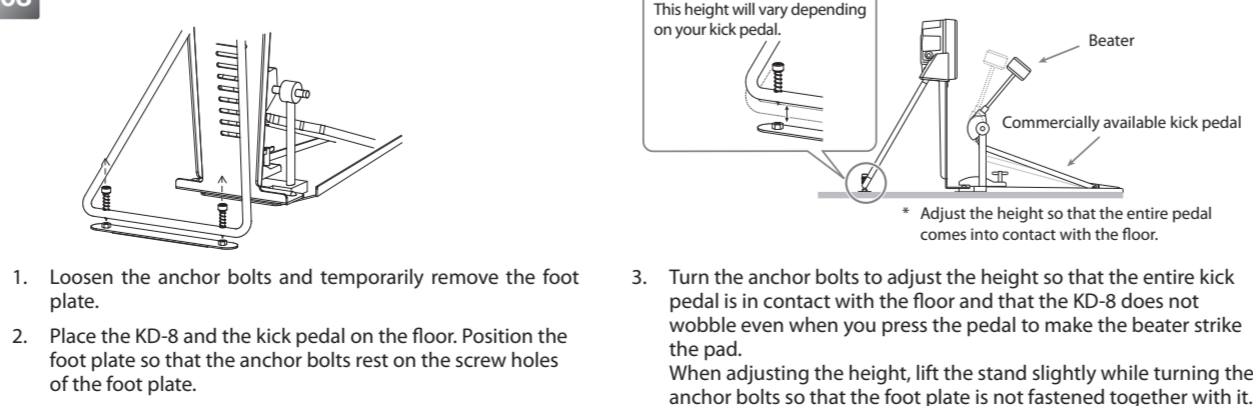
Position the beater so that it strikes the center of the head, then secure the kick pedal and KD-8 firmly in place.



#### When using a twin pedal



#### 03 Adjust the height of the foot plate



4. Screw the anchor bolts into the screw holes of the foot plate to fasten it. If you're using a drum mat, the KD-8 will be more stable if the pointed portion of the anchor bolts protrudes from the foot plate. If you're not using a drum mat, take care not to tighten the anchor bolts too far, so that you do not damage the floor or carpet.

Other side



## Free Manuals Download Website

<http://myh66.com>

<http://usermanuals.us>

<http://www.somanuals.com>

<http://www.4manuals.cc>

<http://www.manual-lib.com>

<http://www.404manual.com>

<http://www.luxmanual.com>

<http://aubethermostatmanual.com>

Golf course search by state

<http://golfingnear.com>

Email search by domain

<http://emailbydomain.com>

Auto manuals search

<http://auto.somanuals.com>

TV manuals search

<http://tv.somanuals.com>