

Roland®

Roland Digital Piano

# HPi-Series

HPi-7LE / HPi-7 / HPi-6





## HPi-7LE

- Extra-wide DigiScore color LCD display
- Powerful 4-speaker sound system (50 W: 20 cm/7-7/8"×2 [Speaker Box]; 5 cm/2"×2)
- External display (optional)
- Progressive Hammer-Action Keyboard with Escapement (key "click" feel)
- "Visual Lesson" feature makes practice fun and effective
- Mic Input for Karaoke

## HPi-7

- Extra-wide DigiScore Color LCD display
- Powerful 2-speaker sound system (40 W: 20 cm/7-7/8"×2)
- Progressive Hammer-Action Keyboard with Escapement (key "click" feel)
- "Visual Lesson" feature makes practice fun and effective
- Mic Input for Karaoke

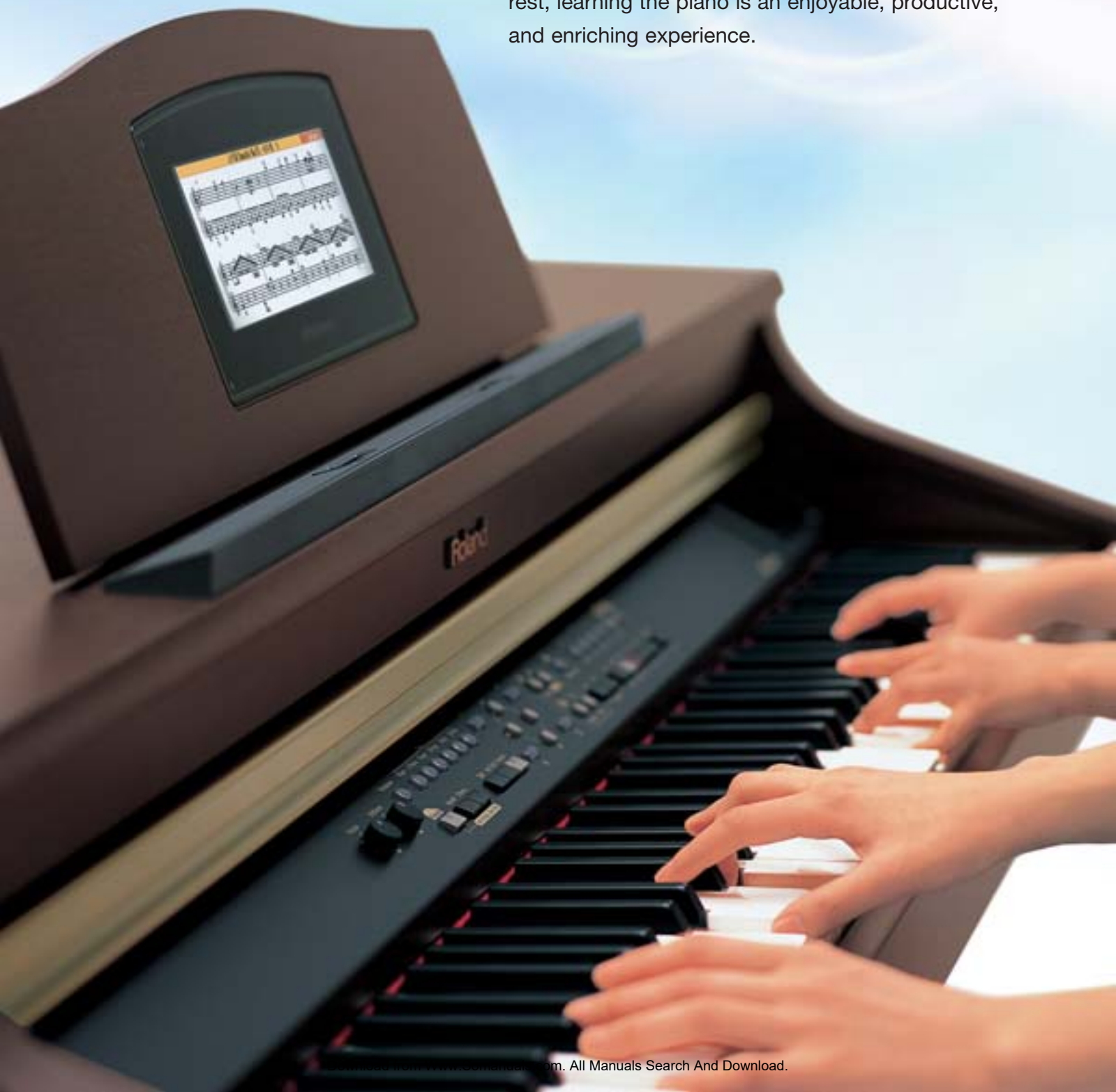


## HPi-6

- Wide DigiScore Color LCD display
- Progressive Hammer-Action Keyboard
- "Visual Lesson" feature makes practice fun and effective
- DoReMi Course for mastering note reading and fingering
- "Twin Piano" feature enables student and teacher to play together
- External memory port

## The HPi Series — entertain, educate, inspire!

Announcing a new standard of excellence for piano lovers, from beginners to virtuosos. The new HPi Series offers not only the genuine sound and natural touch of an authentic acoustic grand, but also the amazing DigiScore piano teaching feature. With the fun, friendly DigiScore System built into the music rest, learning the piano is an enjoyable, productive, and enriching experience.



## Experience the expressive power and natural feel of a superior digital grand

The HPi Series boasts an impressive range of features:

- Cutting-edge stereo sampling, up to 128-voice polyphony
- Progressive Hammer-Action Keyboard creates a grand piano feel: heavier touch in lower octaves, lighter in upper register
- Escapement (HPi-7LE/HPi-7) produces key “click” just as on a grand piano
- Piano Resonance causes subtle sound variations when lifting fingers from keys, striking chords, and depressing Damper Pedal
- Grand Sound audio system (HPi-7LE) envelops the player in a thick and rich blanket of sound



HPi-7LE

## The possibilities are endless

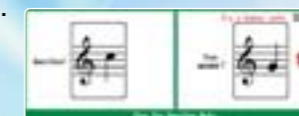
Wonderland is where learning meets fun 

Wonderland teaches kids all about sound and rhythm in an adventurous, exciting way:

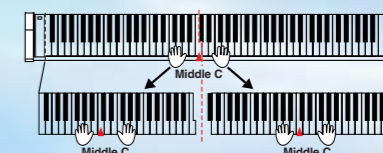
- The colorful menu is the gateway to eight entertaining games.
- Learn how to read music and improve pitch with Flashcards

With the **Twin Piano function (HPi-6)**, two can play


The Twin Piano function splits the keyboard so two players can play simultaneously, in the same register — an innovative, fun way for teachers and students, parents and children, or a pair of friends to practice together.



Flash Card game



## How can DigiScore teach you to play piano?

 Built into the music rest at an ideal height for easy viewing, the

DigiScore LCD display shows preinstalled songs, MIDI files, and recorded music. Just touch a button and internal music starts playing on the screen, which displays the score in an easy-to-follow format — complete with a metronomic onscreen bouncing ball that bounces across the notes as they are played. The music comes alive right before your eyes.

**DigiScore is fully integrated with the educational features of the HPi Series.**

If you stumble in the middle of a piece, simply step on the Replay Pedal. That stops the music so you can start over again; your hands never have to leave the keyboard.

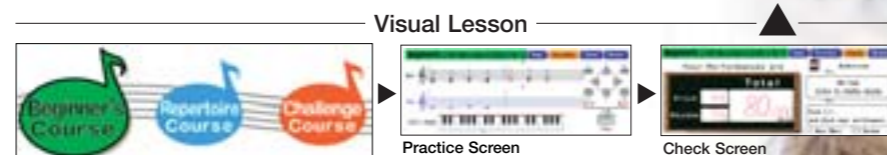
**Check your performance with your eyes as well as your ears**

With the Visual Lesson feature you can see how you're doing:

- Choose the course that best suits your level.
- Watch the notes appear on the Practice Screen in real time, as you play.
- See the Check Screen to learn your accuracy score in pitch and rhythm, and get advice for improvement.
- Review the parts of your performance that need extra attention on the Review Screen.

**Learn fingering and how to read music with DoReMi Course (HPi-6)**

The DoReMi Course teaches piano fundamentals: Pitch, Rhythm, Note Reading, Fingering, and the “Thumb Under” technique.



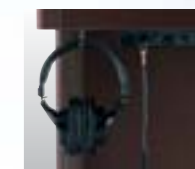
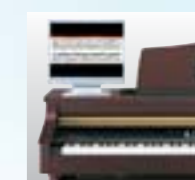
Review Screen (HPi-7LE/HPi-7)

HPi-6



And the fun goes on

- To add to your playing pleasure, you have a wide variety of different tones to choose from, including electric piano, harpsichord, organ, strings, and more.
- In Dual Mode you can play with two voices at once to create new sound variations. In Split Mode you can divide the keyboard into two sections, each with a distinct sound.
- Turn your HPi-7LE or HPi-7 into a “backup player” for you: With the Pianist function, the piano automatically accompanies you in a variety of preset genres.
- Plug a microphone into the HPi-7LE or HPi-7 and sing Karaoke-style along with MIDI files. Connect to an external display (HPi-7LE) for larger images and easier viewing.
- For late night rehearsal or practicing in close quarters, use the headphones; an indicator light comes on when they're plugged in. When you're finished with them, you can keep them handy on the hook just under the keyboard.



### Options

- Headphones RH-200
- Microphone DR-50 (For HPi-7LE, HPi-7)
- USB Flash Memory M-UF128 (For HPi-6)
- Floppy Disk Drive FD-01A (For HPi-6)



# HPi-7LE/HPi-7/HPi-6 Specifications

		HPi-7LE/HPi-7	HPi-6	
<b>Keyboard</b>	Keyboard	88 keys (Progressive Hammer-Action Keyboard with Escapement)	88 keys (Progressive Hammer-Action Keyboard)	
	Touch Sensitivity	Light, Medium, Heavy, Fixed		
	Keyboard Mode	Whole, Split (split point adjustable), Dual (volume balance adjustable), Pianist, Manual Drums/SFX	Whole, Split (split point adjustable), Dual (volume balance adjustable), Twin Piano, Manual Drums/SFX	
<b>Sound Generator</b>		Conforms to GM2/GS/XG Lite		
	Max. Polyphony	128 voices		
	Tones	600 sounds in 6 groups (including 15 drum sets, 1 SFX set)	450 sounds in 5 groups (including 15 drum sets, 1 SFX set)	
	Temperament	8 types, tonic selectable		
	Stretched Tuning	2 types		
	Master Tuning	415.3 Hz to 466.2 Hz (adjustable in increments of 0.1 Hz)		
	Transpose	Key Transpose (-6 to +5 in semitones), Playback Transpose (-24 to +24 in semitones)		
	Effects	Reverb (10 levels), Chorus (10 levels), Damper Resonance (for Piano only, 10 levels), String Resonance (for Piano only, 10 levels), Key Off Resonance, Lid (for Piano only, 6 levels), Hammer Response (for Piano only, 10 levels)	Reverb (10 levels), Chorus (10 levels), Damper Resonance (for Piano only, 10 levels), String Resonance (for Piano only, 10 levels), Key Off Resonance, Lid (for Piano only, 6 levels), Hammer Response (for Piano only, 10 levels), Dynamics	
<b>Arranger</b>	Music Styles	35 Pianist Styles	-	
	Control	Start/Stop, Intro/Ending	-	
<b>Composer</b>	Metronome	Beat: 2/2, 0/4, 2/4, 3/4, 4/4, 5/4, 6/4, 7/4, 3/8, 6/8, 9/8, 12/8, Volume: 10 levels, Pattern: 11 patterns, Sound: 8 types		
	Tracks	5 tracks / 16 tracks		
	Song	1 song		
	Note Storage	Approx. 30,000 notes		
	Tempo	Quarter note = 10 to 500		
	Resolution	120 ticks per quarter note		
	Edit	Copy, Quantize, Delete, Insert, Erase, Transpose, Part Exchange, Note Edit, PC Edit		
	Control	Reset, Play/Stop, Rec, Bwd, Fwd, Track Select, All Song Play, Random Play, Count-in, Countdown, Marker Set, Repeat, Tempo Mute		
	<b>Disk Drive/Disk Storage</b>	Storage	3.5-inch Micro Floppy Disk Drive	USB Flash Memory
		Disk Format	720 Kbytes (2DD), 1.44 Mbytes (2HD)	Floppy Disk Drive (Option)
Files		Max. 99 songs	-	
Note Storage		Approx. 120,000 notes (2DD), Approx. 240,000 notes (2HD)	-	
Playable Software		Standard MIDI Files (Format 0/1), Roland Original Format (i-format)		
Save		Standard MIDI Files (Format 0), Roland Original Format (i-format)		
<b>Others</b>	Internal Songs	Over 170 songs		
	User Memory	Max. 200 songs on Favorites, 1 User image		
	Rated Power Output	HPi-7LE: 50 W x 2; HPi-7: 40 W x 2	25 W x 2	
	Speakers	HPi-7LE: 20 cm/7-7/8" x 2 (Speaker Box), 5 cm x 2; HPi-7: 20 cm x 2	12 cm/4-3/4" x 2, 5 cm/2" x 2	
	Display	640 x 240 dots graphic color LCD (backlit)	320 x 240 dots graphic color LCD (backlit)	
	Notation	Grand staff / G clef staff / F clef staff, with note name / lyrics / chords / fingering		
	Languages	English/Japanese/German/French/Spanish		
	Lyrics	HPi-7LE: Yes (Built-in Display, MIDI Out, External display) HPi-7: Yes (Built-in Display, MIDI Out)	Yes (Built-in Display)	
	Control	Volume, Brilliance, LCD contrast, Mic volume	Volume, LCD contrast	
	Pedals	Damper (half-pedal recognition), Soft (half-pedal recognition, function assignable), Sostenuto (function assignable)	Damper, Soft (function assignable), Sostenuto (function assignable)	
	Other Functions	Panel Lock, Replay, Wonderland/Game, Auto demo, Visual Lesson, BMP export, Mic echo, User image display, V-LINK	Brilliance, Panel Lock, Replay, Wonderland/Game, Auto demo, Visual Lesson, DoReMi Course, BMP export, User image display, V-LINK	
	Connectors	Output jacks (L/Mono, R), Input jacks (L/Mono, R), Headphones jack (Stereo) x 2, Mic Input jack, MIDI In connector, MIDI Out connector, Pedal connector (8 pin DIN type), LCD connector (20 pin), USB (MIDI) connector, Ext Display connector (15-pin D-Sub type, HPi-7LE only)	Output jacks (L/Mono, R), Input jacks (L/Mono, R), Headphones jack (Stereo) x 2, MIDI In connector x 2, MIDI Out connector, Pedal connector, LCD connector (20 pin), USB (MIDI) connector, External Memory connector	
	Power Supply	AC 115 V, AC 117 V, AC 220 V, AC 230 V, AC 240 V (50/60 Hz)		
	Power Consumption	HPi-7LE: 120 W HPi-7: 105 W	60 W	
	Cabinet Finish	Simulated Mahogany		
	Dimensions	(Including piano stand) 1,421 (W) x 526 (D) x 894 (H) mm 56 (W) x 20-3/4 (D) x 35-1/4 (H) inches (Including piano stand and music rest) 1,421 (W) x 526 (D) x 1,101 (H) mm 56 (W) x 20-3/4 (D) x 43-3/8 (H) inches	(Including piano stand) 1,388 (W) x 425 (D) x 836 (H) mm 54-11/16 (W) x 16-3/4 (D) x 32-15/16 (H) inches (Including piano stand and music rest) 1,388 (W) x 433 (D) x 1,043 (H) mm 54-11/16 (W) x 17-1/16 (D) x 41-1/16 (H) inches	
	Weight (Including piano stand)	HPi-7LE: 80 kg / 176 lbs 6 oz HPi-7: 69 kg / 153 lbs	55.5 kg / 123 lbs	
	Accessories	Owner's Manual, Roland 60 Classical Piano Masterpieces, Installation Guide, CD-ROM (Roland Digital Piano USB Driver), Power Cord, Headphones Hook, Music Rest (with installation screws)		

With the HPi-7LE/HPi-7/HPi-6, you can use music files that carry any of these marks:

## Internal songs

### Practice Pieces

- Burgmüller 25 Easy Studies Op. 100 (all 25 songs) • J. S. Bach Inventions (all 15 songs) • From "Beyer Piano Textbook" (20 songs)
- From "Černy 100 Progressive Exercises Op. 139" (10 songs) • Old McDonald Had A Farm • Twinkle Twinkle, Little Star
- Frog Song • Jingle Bells • The Cuckoo • Mary Had A Little Lamb • London Bridge • Joy To The World, and more

### Masterpieces\*

- Sonate No. 15 (Sonata K. 545-1) • Liebesträume 3 • Étude Op. 10-3 • Je Te Veux • Valse Op. 64-1, "Petit chien" • Golliwog's Cakewalk
- Fantaisie-Impromptu • Arabesque 1, etc.

\* All 60 song files of this genre correspond to the included collection of printed music entitled "Roland 60 Classical Masterpieces"



### Popular Songs

- Entertainer • Annie Laurie • O'sole Mio • Grandfather's Clock • Londonderry Air • Silent Night, Holy Night
- Ave Maria • Greensleeves • Stagecoach • Little Brown Jug • Amazing Grace • When The Saints Go Marchin' In, and more

## System requirements for USB (MIDI)

- Windows Operating System: Microsoft Windows® XP Home/XP Professional/2000, Professional/Me • Computer: Windows-compatible personal computer equipped with a USB port • CPU/Clock: Pentium processor 200 MHz or higher (Pentium® processor 400 MHz or higher on Windows® XP) • Memory (RAM): 128 MB or more
  - Macintosh Operating System: Mac OS X v10.2 or later • Computer: USB ready Apple® Macintosh® • CPU/Clock: PowerPC G3 233 MHz or higher
  - Memory (RAM): 128 MB or more
- \* Mac OS X: The digital piano will not operate in the Mac OS X Classic environment, and will be unusable while the Classic environment is running.

**V-LINK** Roland's V-LINK makes it possible to control video clips when used with EDIROL video products.



Visit us online at [www.Roland.com](http://www.Roland.com)



This brochure was printed with soy ink.  
\* All specifications and appearances are subject to change without notice.  
\* All trademarks are the property of their respective companies.

## Free Manuals Download Website

<http://myh66.com>

<http://usermanuals.us>

<http://www.somanuals.com>

<http://www.4manuals.cc>

<http://www.manual-lib.com>

<http://www.404manual.com>

<http://www.luxmanual.com>

<http://aubethermostatmanual.com>

Golf course search by state

<http://golfingnear.com>

Email search by domain

<http://emailbydomain.com>

Auto manuals search

<http://auto.somanuals.com>

TV manuals search

<http://tv.somanuals.com>